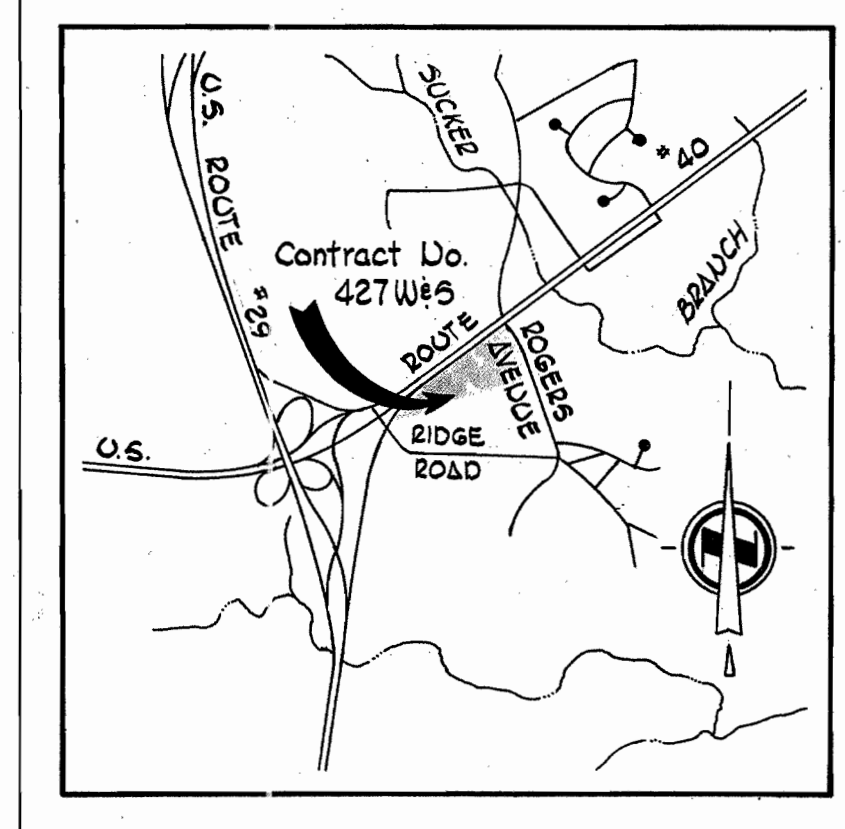
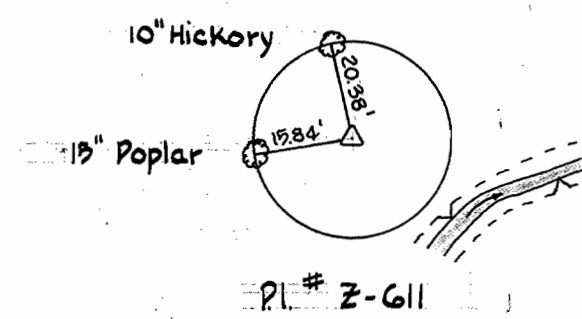
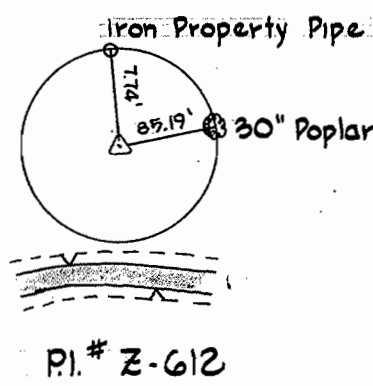


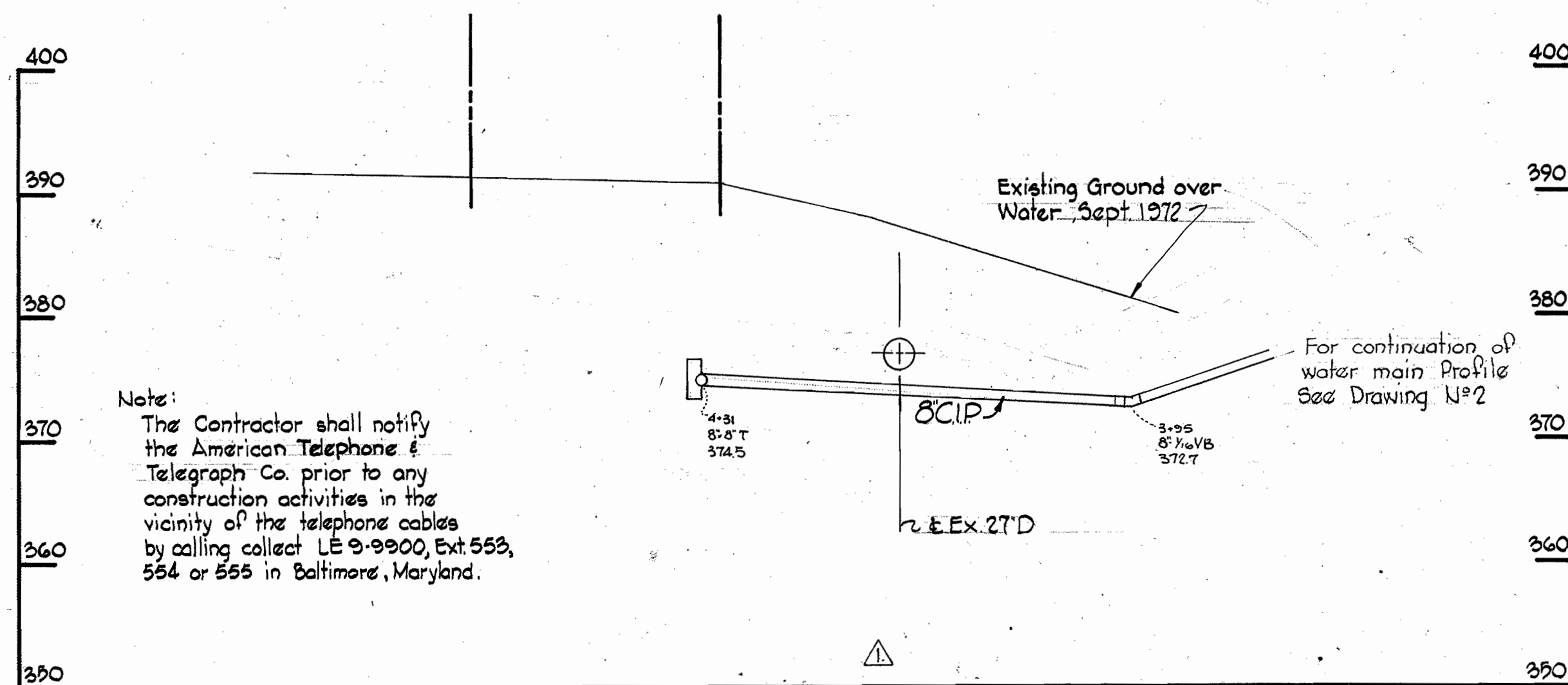
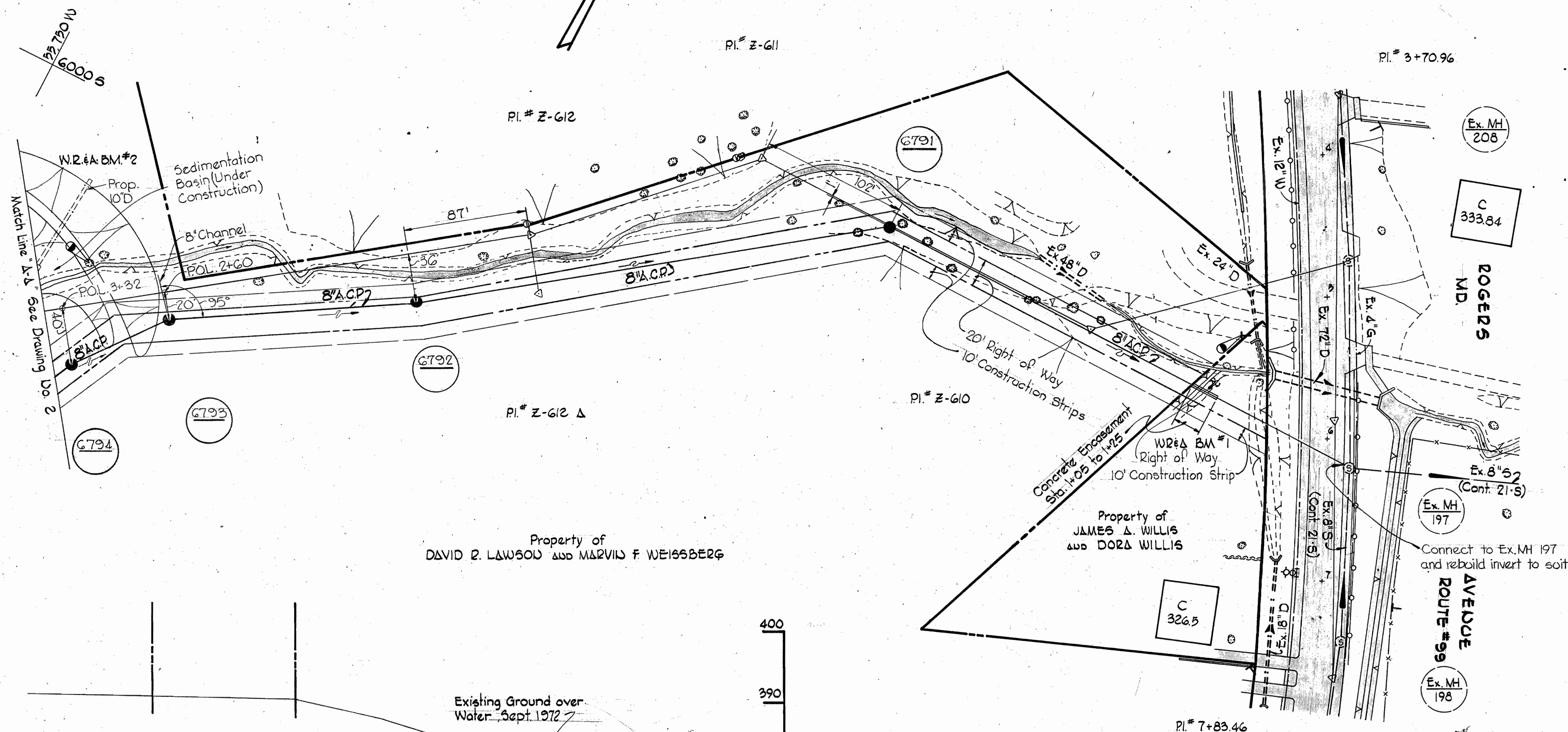
W2&A BM #2 Elev. 355.26
 PK Nail on side of 24" Maple, 35' ± right of
 Station 3+00 between Pl. # Z-612 and
 Pl. # Z-613.



VICINITY MAP
 Scale: 1" = 1/2 mile

GENERAL NOTES

1. Approximate location of existing mains are shown. The Contractor shall take all necessary precautions to protect existing mains and services and maintain uninterrupted supply. Any damage incurred shall be repaired immediately.
2. All pipe elevations shown are in invert elevations.
3. The Contractor shall locate existing utilities a minimum of two weeks in advance of construction operations in vicinity of utilities.
4. For all standard details see standards bound in Specifications.
5. All water mains shall have a minimum of 3/8" cover.
6. Block all fittings with concrete, see standards bound in Specifications.
7. Bury Line elevations on fire hydrants shall be set to the elevations shown on the drawings.
8. Cost of strapping fire hydrants and valves to be included in the unit price bid for furnishing and installing fire hydrants.
9. All fire hydrants shall be strapped to the tee and shall be buttressed with concrete in accordance with Standard Details.
10. Clear all utilities by a minimum of 6", clear all poles by 2'-0" minimum or tunnel as required.
11. All manholes shall be 4'-0" inside diameter.
12. The Contractor shall provide a joint within 2'-0" of exterior manhole walls.
13. All horizontal and vertical controls are based on Howard County Datum.



PROFILE
 Scale: 1" = 10' H&V

PLAN
 Scale: 1" = 90'

W2&A BM #1 Elev. 327.48
 PK Nail in pole # 237263, 25' ± left of
 Station 0+85 ± between MH #208 and
 Pl. # Z-610, 2.5' above ground.

AS BUILT
 STAKEOUT & DIARY
 FB# 5245



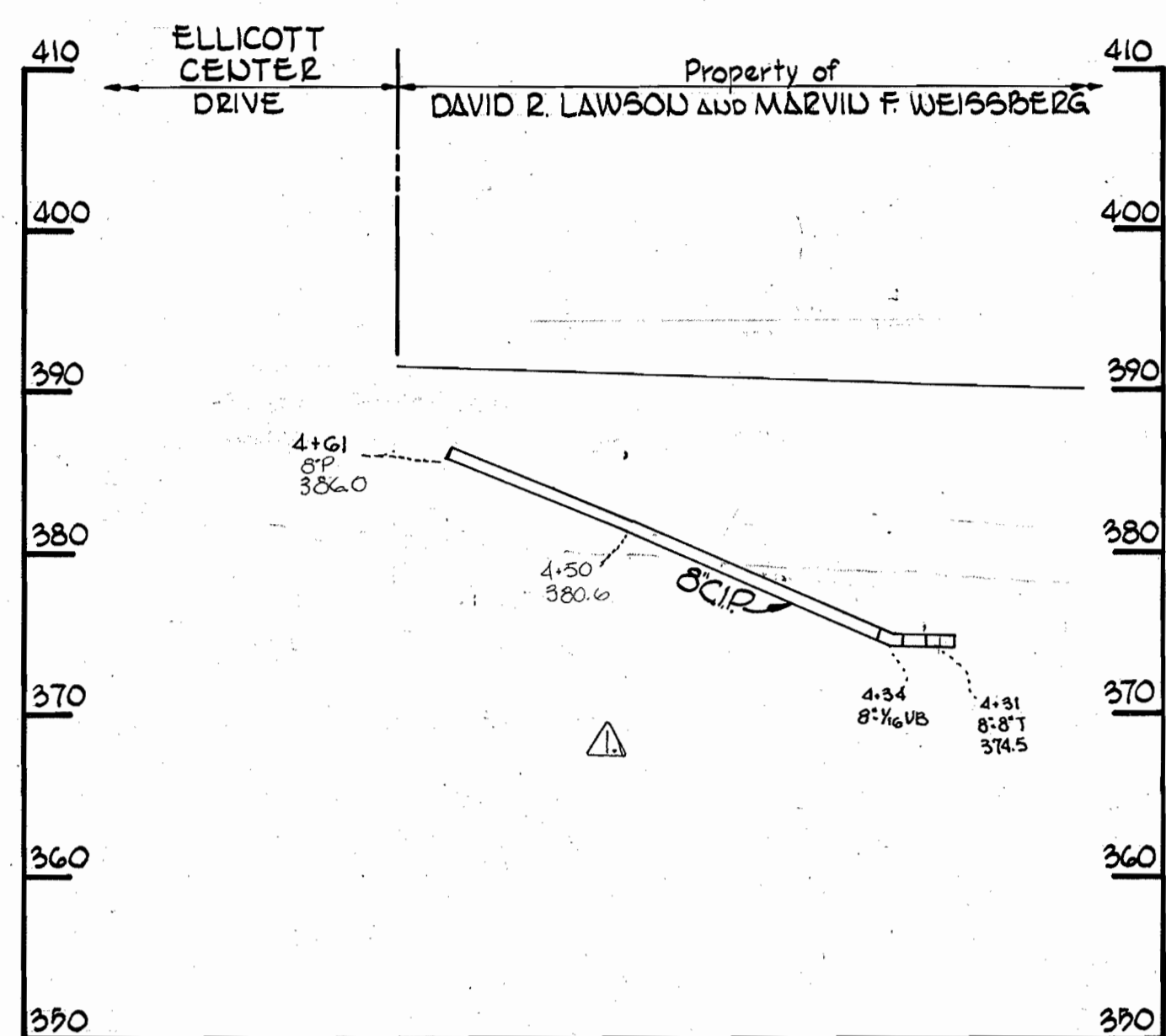
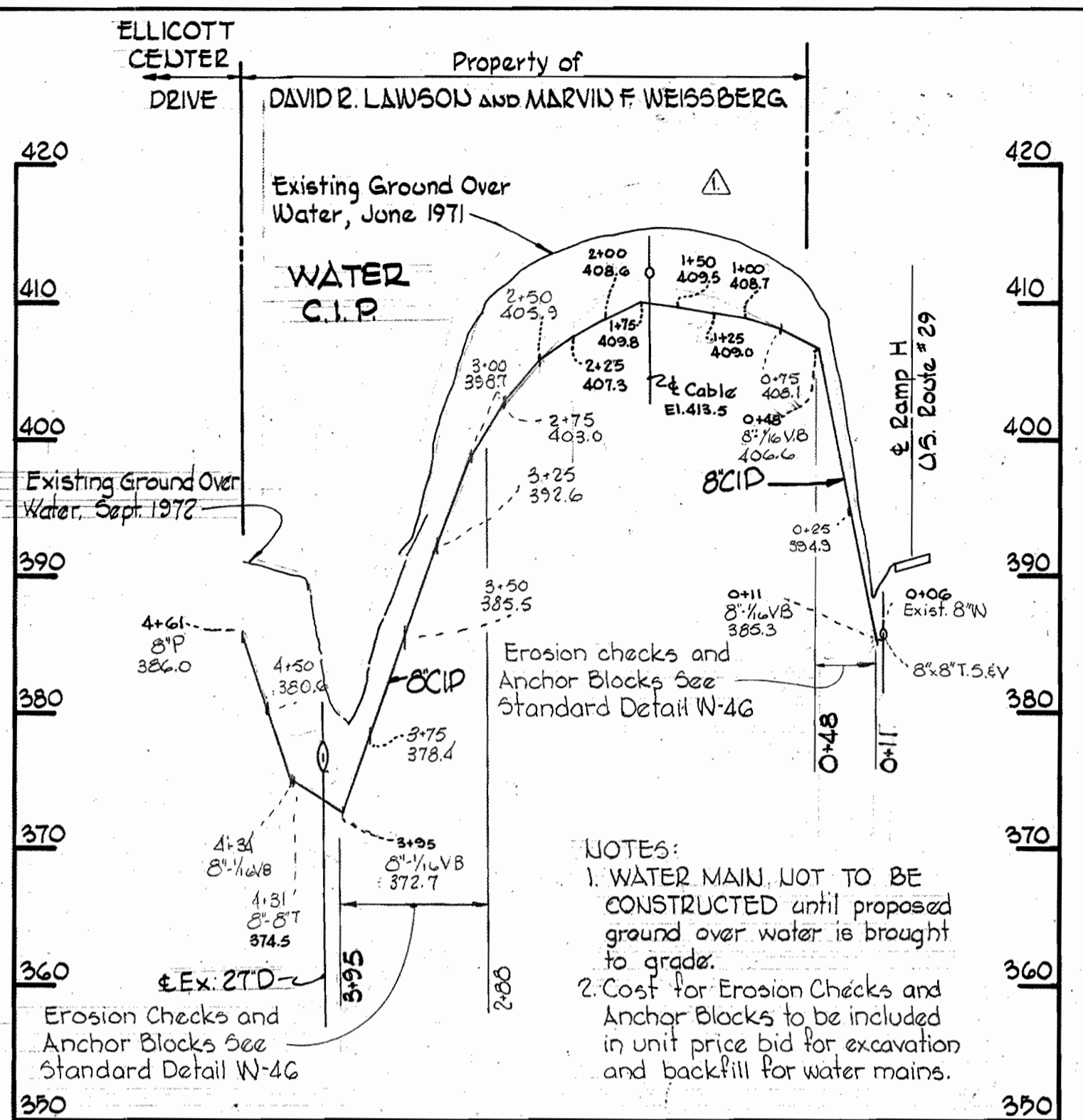
Handwritten signature

Uo.	Date	Revisions	Ellicott Center Contract No. 427 W#5
▲	5-22-72	Realigned Water between Pts 40 to Ellicott Center Dr.	

WHITMAN, REQUARDT & ASSOCIATES ENGINEERS 1304 ST. PAUL ST. BALTIMORE, MARYLAND	DEPARTMENT OF PUBLIC WORKS HOWARD COUNTY, MARYLAND 8-30-71 DATE	CONTRACT NO. 427-W85 CHIEF - BUREAU OF WATER AND SEWER	PLAN AND PROFILE OF WATER AND SEWER MAINS	ELECTION DISTRICT ELLICOTT CITY NO. 2	DRAWING NO. 1 OF 2	SCALE AS SHOWN
					6 SW 37 7 SW 37 7 SW 38	FB #4660 DEC 13, 1972 AS BUILT

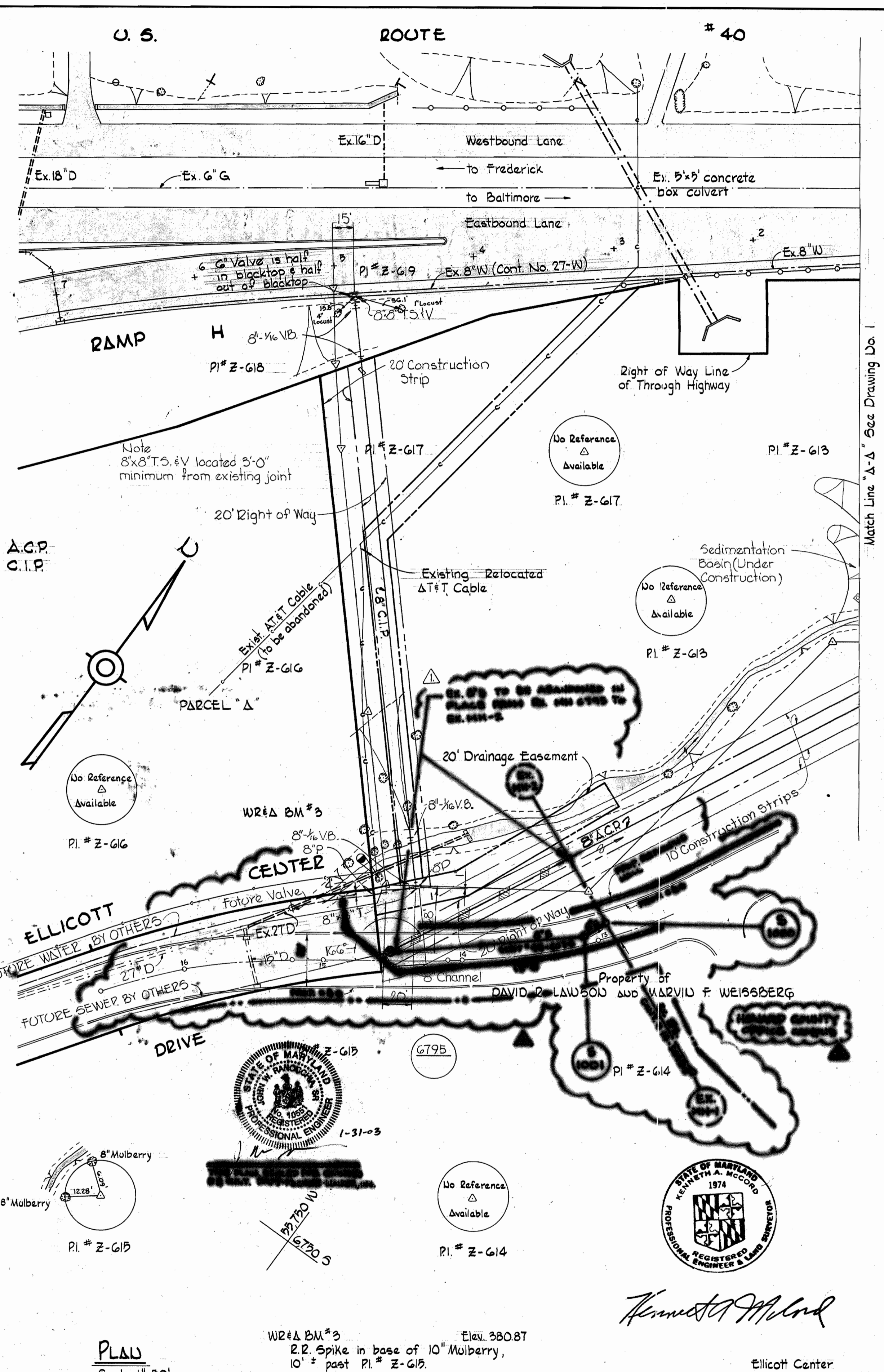
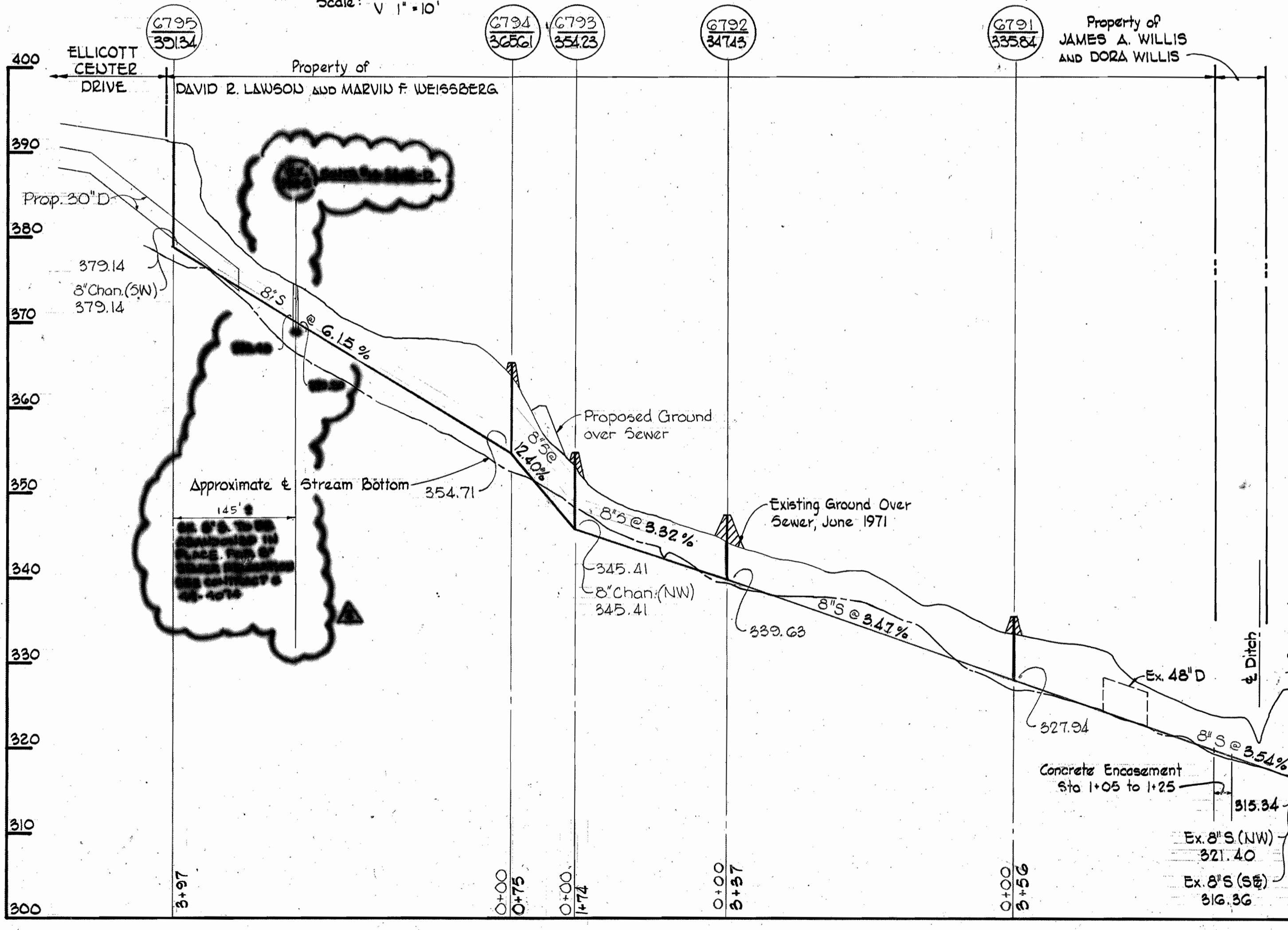
WS 427-W&S/1

No.	Date	Revisions
1	3-22-72	Realigned Water between Pte 40 to Ellicott Center Drive
2	1-24-73	ADD 8" WATER MAINS TO ELICOTT CENTER DRIVE EXTENSION



PROFILE
Scale: H 1" = 100'
V 1" = 10'

PROFILE
Scale: 1" = 10' H & V



NOTE:
SEWER A.C.P.
WATER C.I.P.

PLAN
Scale: 1" = 10'

WHITMAN, REQUARDT & ASSOCIATES
ENGINEERS
1304 ST. PAUL ST.
BALTIMORE, MARYLAND

DEPARTMENT OF PUBLIC WORKS
HOWARD COUNTY, MARYLAND
8-30-71
W. O. P. Chief - Bureau of Water and Sewer

CONTRACT NO. 427-W8S

PLAN AND PROFILES OF
WATER AND SEWER MAINS

ELECTION DISTRICT
ELICOTT CITY NO. 2

DRAWING NO. 2 OF 2
SCALE AS SHOWN

83*4660 DEC. 13, 1972

NS 427-W8S/2

BRUNING 44510 14778

W. O. 6024-2

ASBULL