

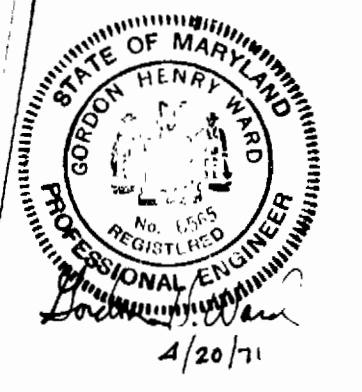
SCALE: 1"=50'  
 PIKE  
 U.S. Route 29  
 COLUMBIA

**GENERAL NOTES**

1. Approximate location of existing mains are shown. The Contractor shall take all necessary precautions to protect existing mains and services and maintain uninterrupted supply. Any damage incurred shall be repaired immediately.
2. All elevations shown are invert elevations.
3. The Contractor shall locate existing utilities a minimum of 2 weeks in advance of construction operations in vicinity of utilities.
4. The Contractor shall notify the Telephone Co. prior to any excavation in the vicinity of the AT&T cables - by contacting 353-3553.
5. The Contractor shall notify the Colonial Pipeline Co. Area Manager, Mr. S. H. Crumlich, 48 hours in advance of any excavation near the pipeline. The Tel. No. is 301-781-4641, P.O. Box 6, Woodbine, Md. 21297.
6. For all Standard Details, see standards bound in specifications.
7. All water mains to have a minimum 3/4" cover.
8. Block all fittings with conc., see standards bound in specifications.
9. Buried line elevations on F.H.s shall be set to Elev.s shown on drawings.
10. All F.H.s shall be strapped to the Tee and shall be buttressed with concrete in accordance with Standard Details.
11. Clear all utilities by a minimum of 6'; Clear all poles 2'-0" min., or tunnel as required.
12. The Contractor shall provide a joint in all sewer mains within 2'-0" of exterior manhole walls.
13. All sewer pipe shall be C.S.PX., V.C.PX. or A.C.P. class 2400 unless otherwise noted.
14. All horizontal and vertical controls are based on Md. State datum.

QUANTITIES	
6" SEWER	100'
8" SEWER	755'
MANHOLES	50 V.F.
2" WATER	185'
4" WATER	10'
6" WATER	495'
8" WATER	1470'
FIRE HYDRANTS	0

NOTE:  
1- See Page 1A For Water & Sewer Mains



**BEN DYER ASSOCIATES, INC.**  
 ENGINEERS, SURVEYORS, PLANNERS  
 4705 QUEENSBURY ROAD  
 RIVERDALE, MARYLAND 20840

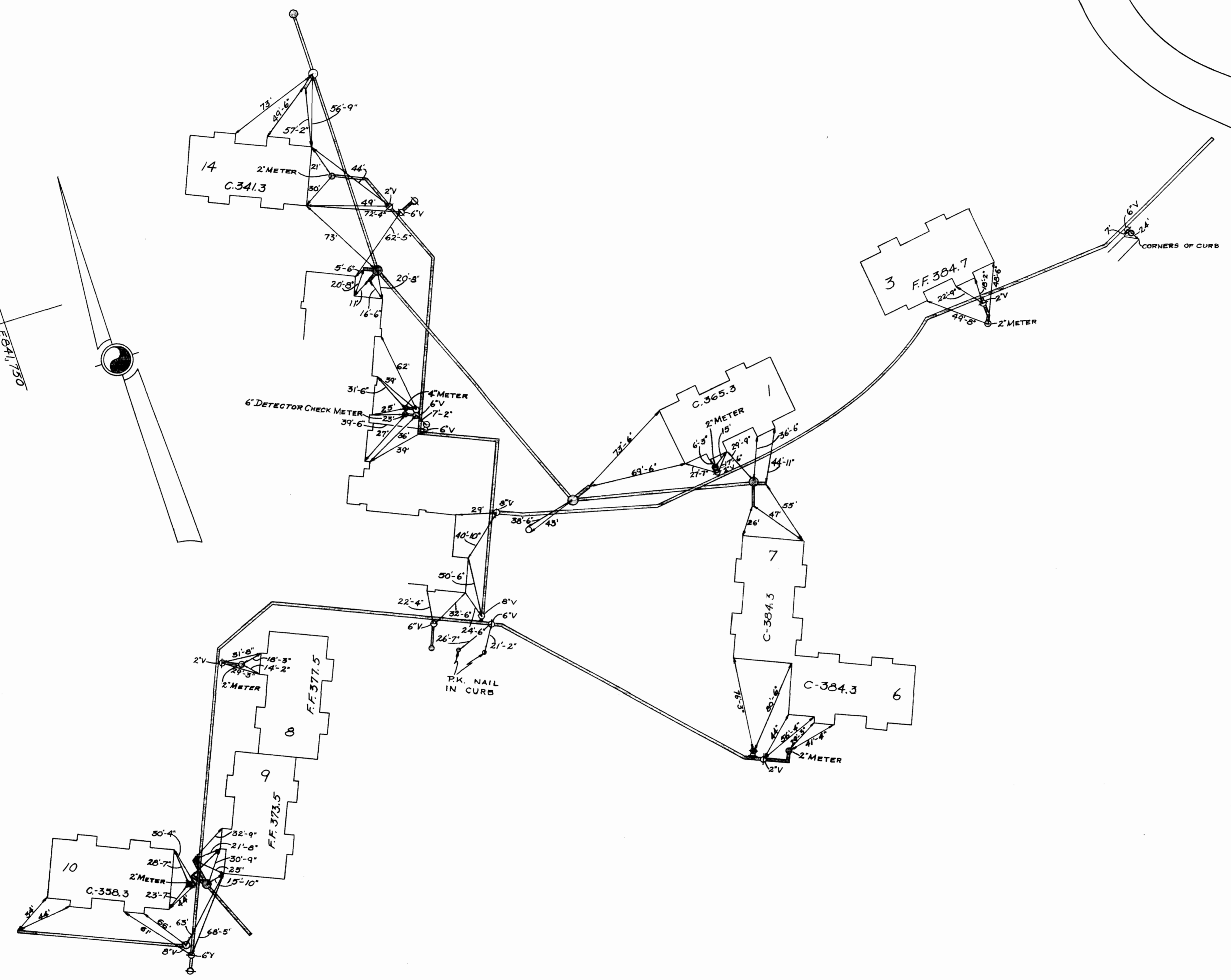
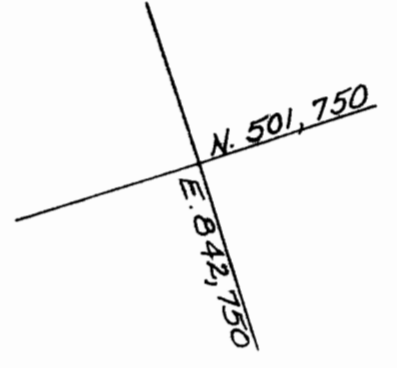
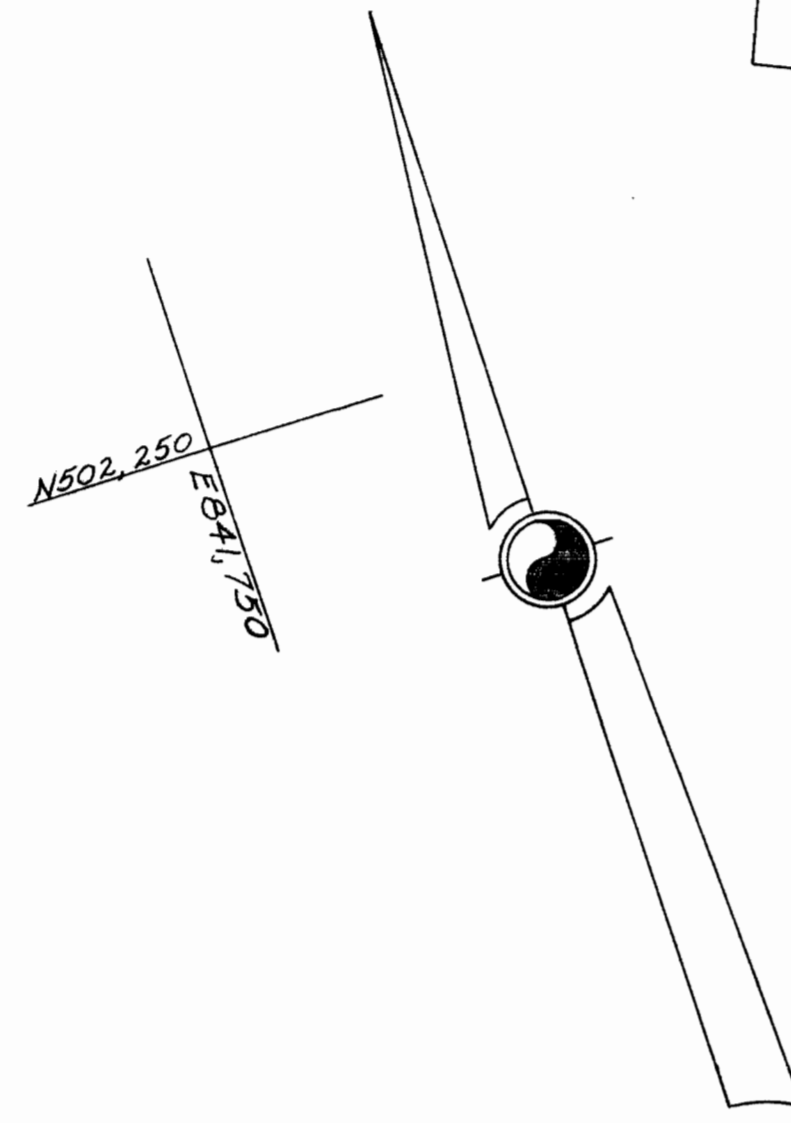
DEPARTMENT OF PUBLIC WORKS  
 HOWARD COUNTY, MARYLAND  
 DATE: 5-7-71  
 Chief - Bureau of Water and Sewer

CONTRACT NO. 414-D-W&S

PLAN OF  
 WATER AND SEWER MAINS

COLUMBIA  
 OAKLAND CLUSTER  
 ELECTION DISTRICT GUILFORD #6

DRAWING NO. 1 OF 2  
 SCALE 1"=50'

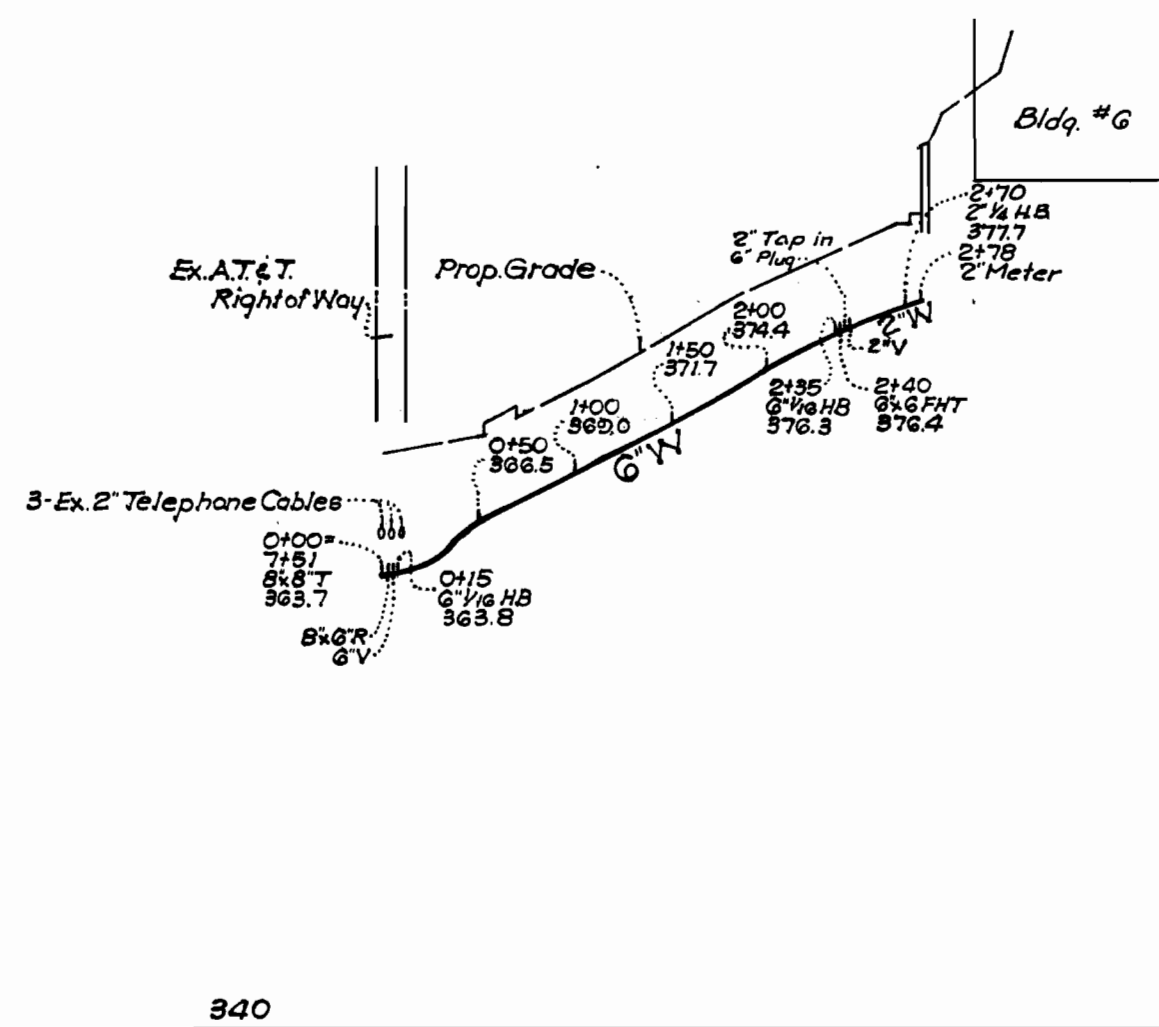


WS 414 W&S/1-A

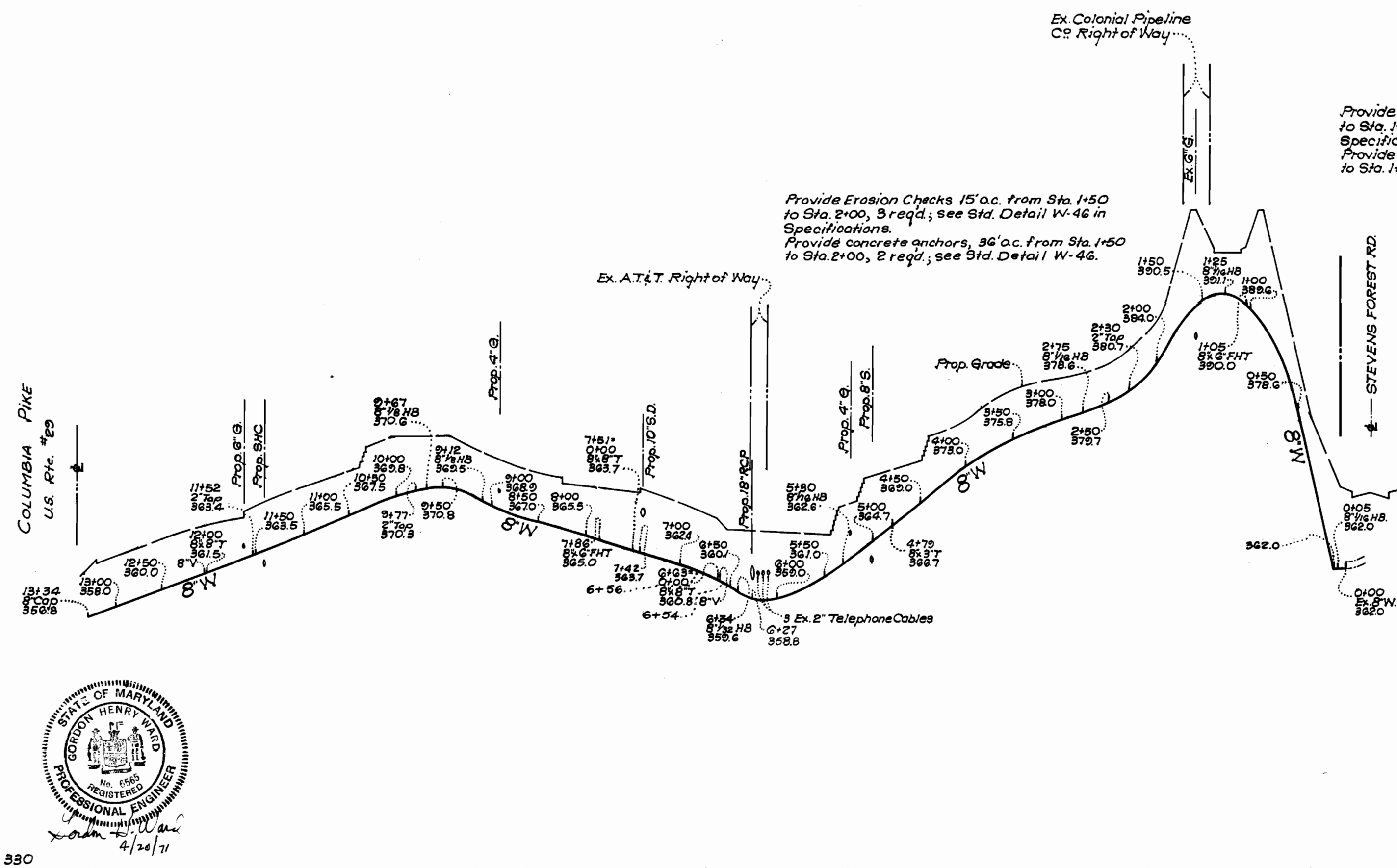
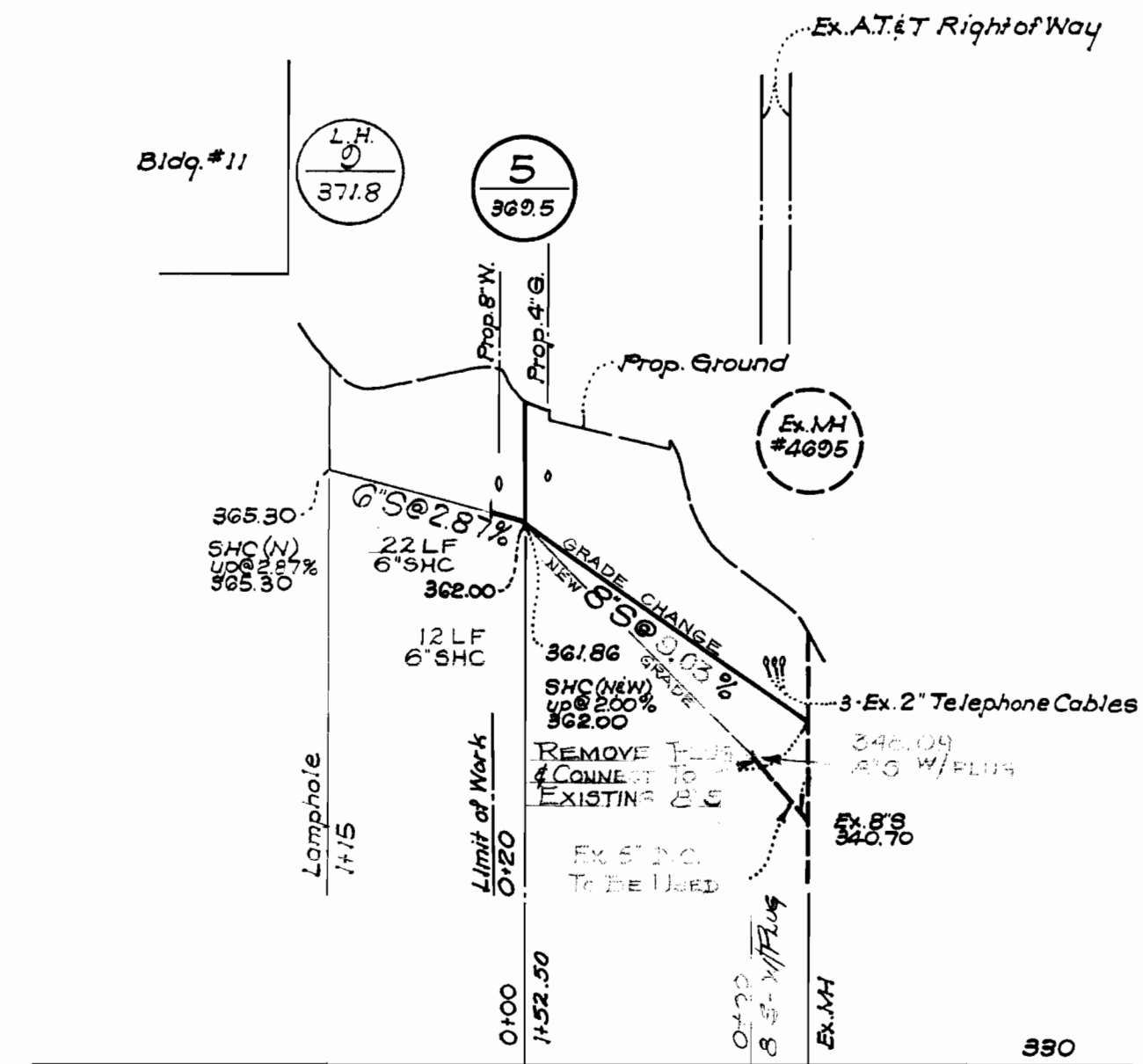
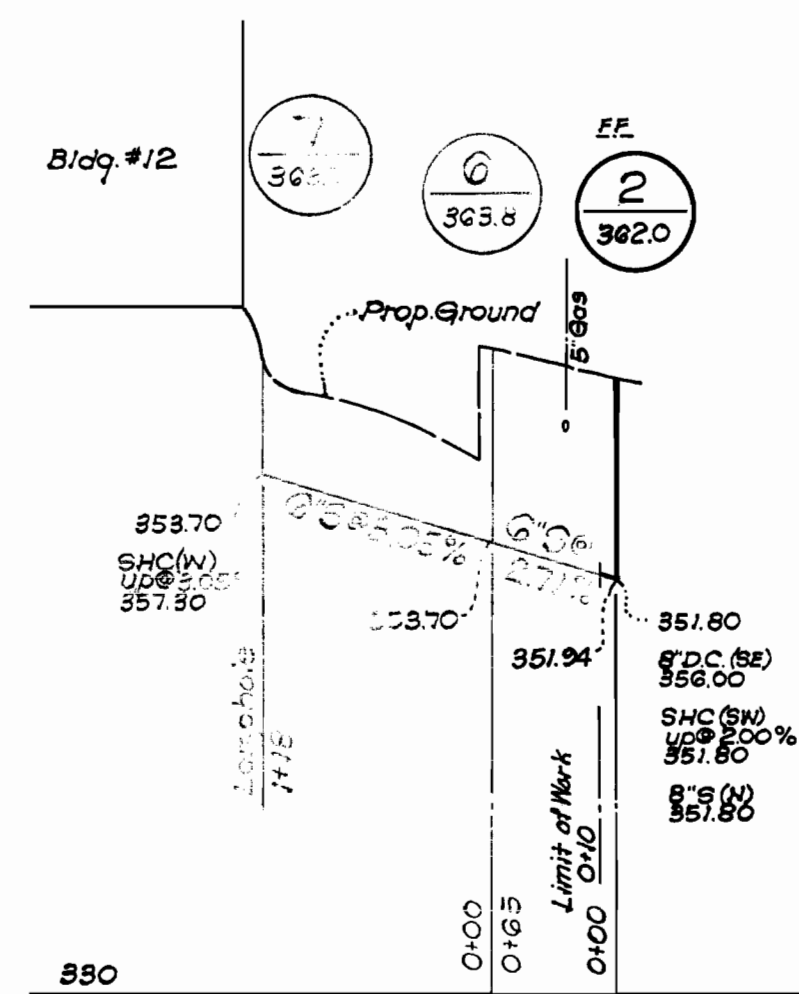
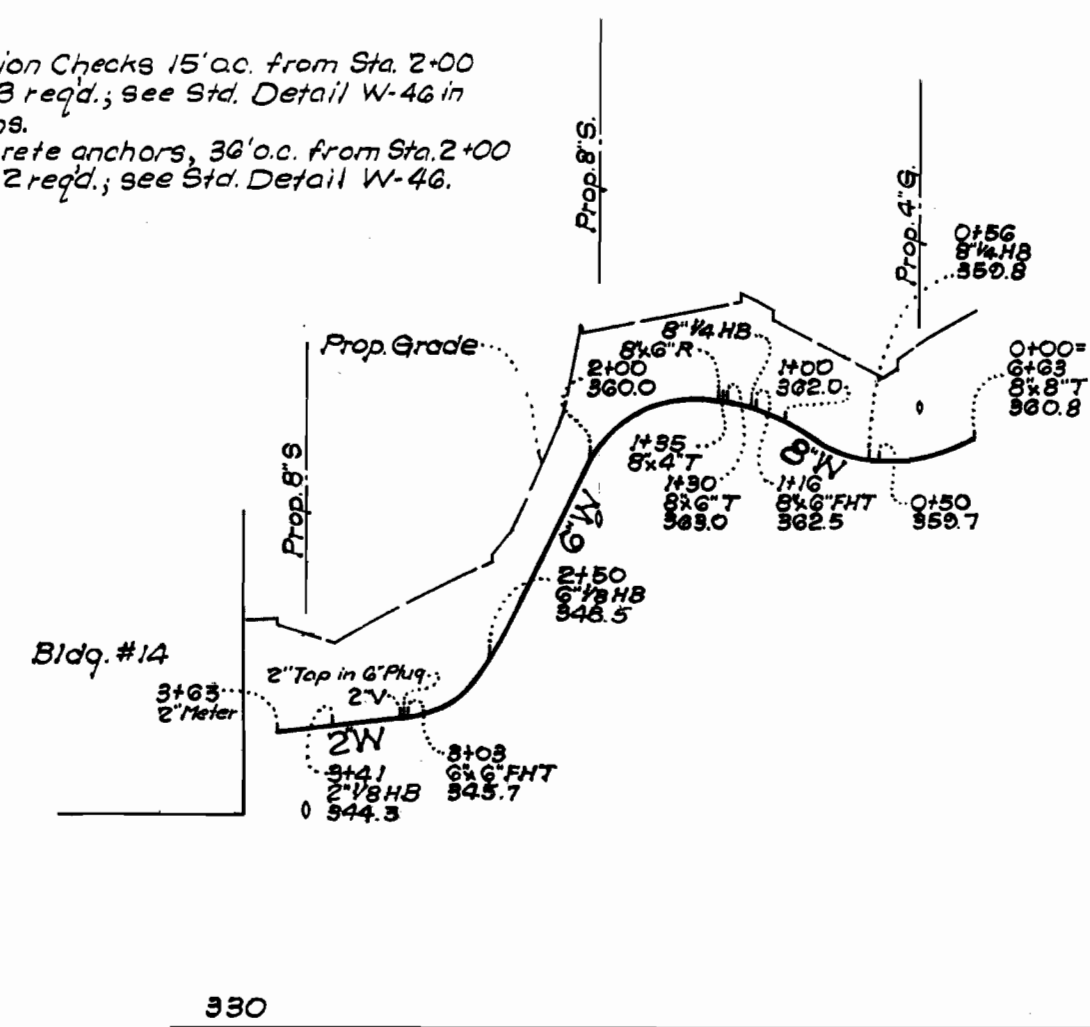
	DEPARTMENT OF PUBLIC WORKS HOWARD COUNTY, MARYLAND DATE _____ CHIEF-BUREAU OF WATER AND SEWER	CONTRACT NO. 414-D-WAS	PLAN OF WATER AND SEWER MAINS	COLUMBIA OAKLAND CLUSTER ELECTION DISTRICT GUILFORD #6	DRAWING NO. 1A OF 2	SCALE 1" = 50'
--	-----------------------------------------------------------------------------------------------------	------------------------	----------------------------------	--------------------------------------------------------------	---------------------------	-------------------

AS BUILT SEPT. 10, 1971





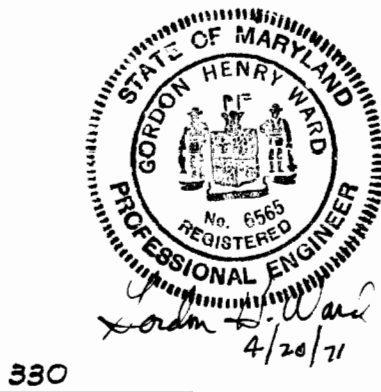
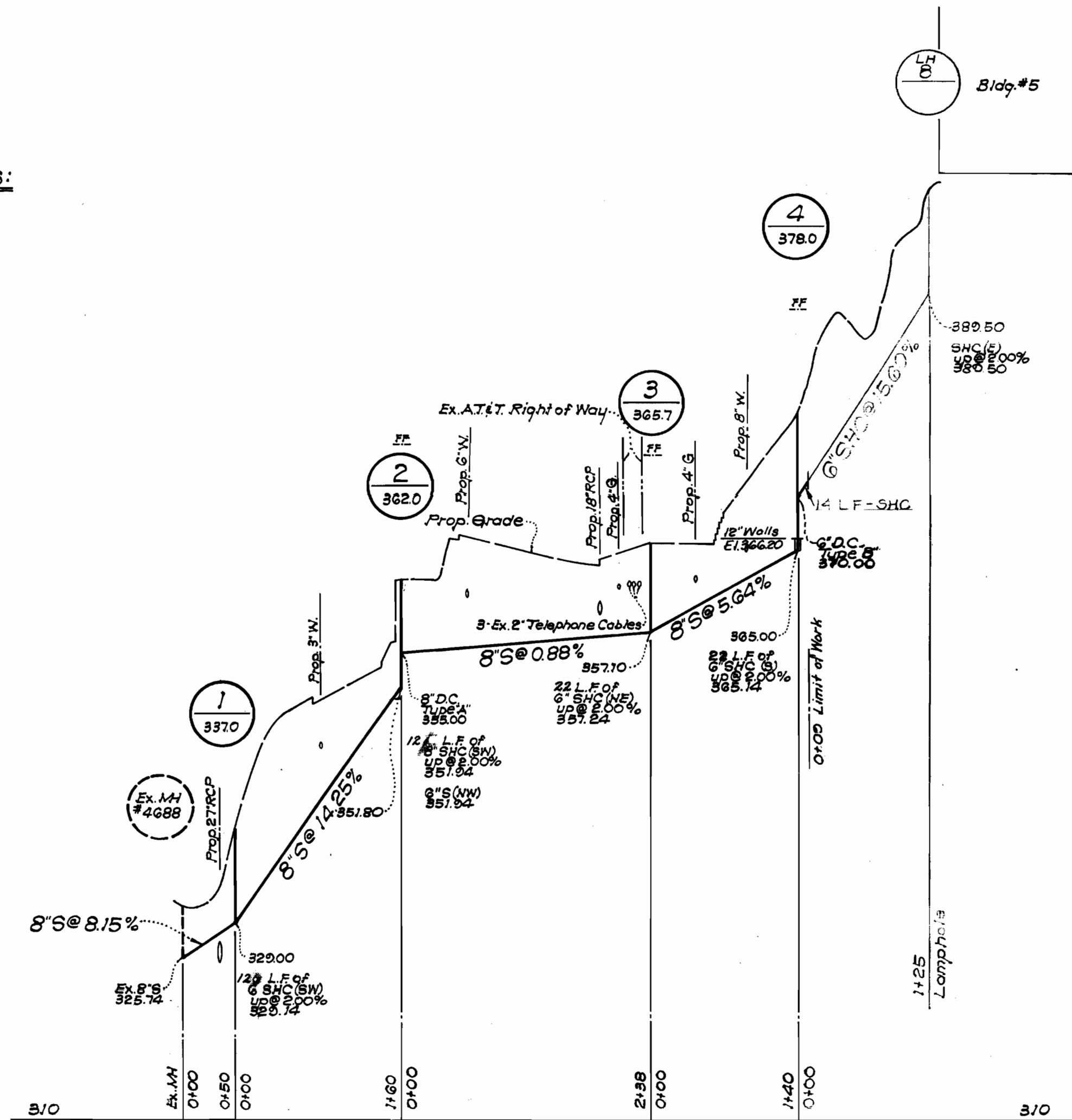
Provide Erosion Checks 15' ac. from Sta. 2+00 to Sta. 2+50, 3 reqd.; see Std. Detail W-46 in Specifications.  
Provide concrete anchors, 36' ac. from Sta. 2+00 to Sta. 2+50, 2 reqd.; see Std. Detail W-46.



Provide Erosion Checks 15' ac. from Sta. 1+50 to Sta. 2+00, 3 reqd.; see Std. Detail W-46 in Specifications.  
Provide concrete anchors, 36' ac. from Sta. 1+50 to Sta. 2+00, 2 reqd.; see Std. Detail W-46.

Provide Erosion Checks 15' ac. from 8' dia L.V.B. to Sta. 1+00, 3 reqd.; see Std. Detail W-46 in Specifications.  
Provide concrete anchors, 36' ac. from 8' dia L.V.B. to Sta. 1+00, 2 reqd.; see Std. Detail W-46.

**PROFILE SCALES:**  
HORIZ. - 1"=100'  
VERT. - 1"=10'



**BEN DYER ASSOCIATES, INC.**  
ENGINEERS, SURVEYORS, PLANNERS  
4705 QUEENSBURY ROAD  
RIVERDALE, MARYLAND 20840

**DEPARTMENT OF PUBLIC WORKS**  
HOWARD COUNTY, MARYLAND  
5-7-71  
DATE  
W. O. Pillemer  
CHIEF - BUREAU OF WATER AND SEWER

CONTRACT NO. 414-D-W-6

**PROFILES OF WATER AND SEWER MAINS**

**COLUMBIA OAKLAND CLUSTER**  
ELECTION DISTRICT GUILFORD #6

**DRAWING NO. 2 OF 2**  
**SCALE AS SHOWN**