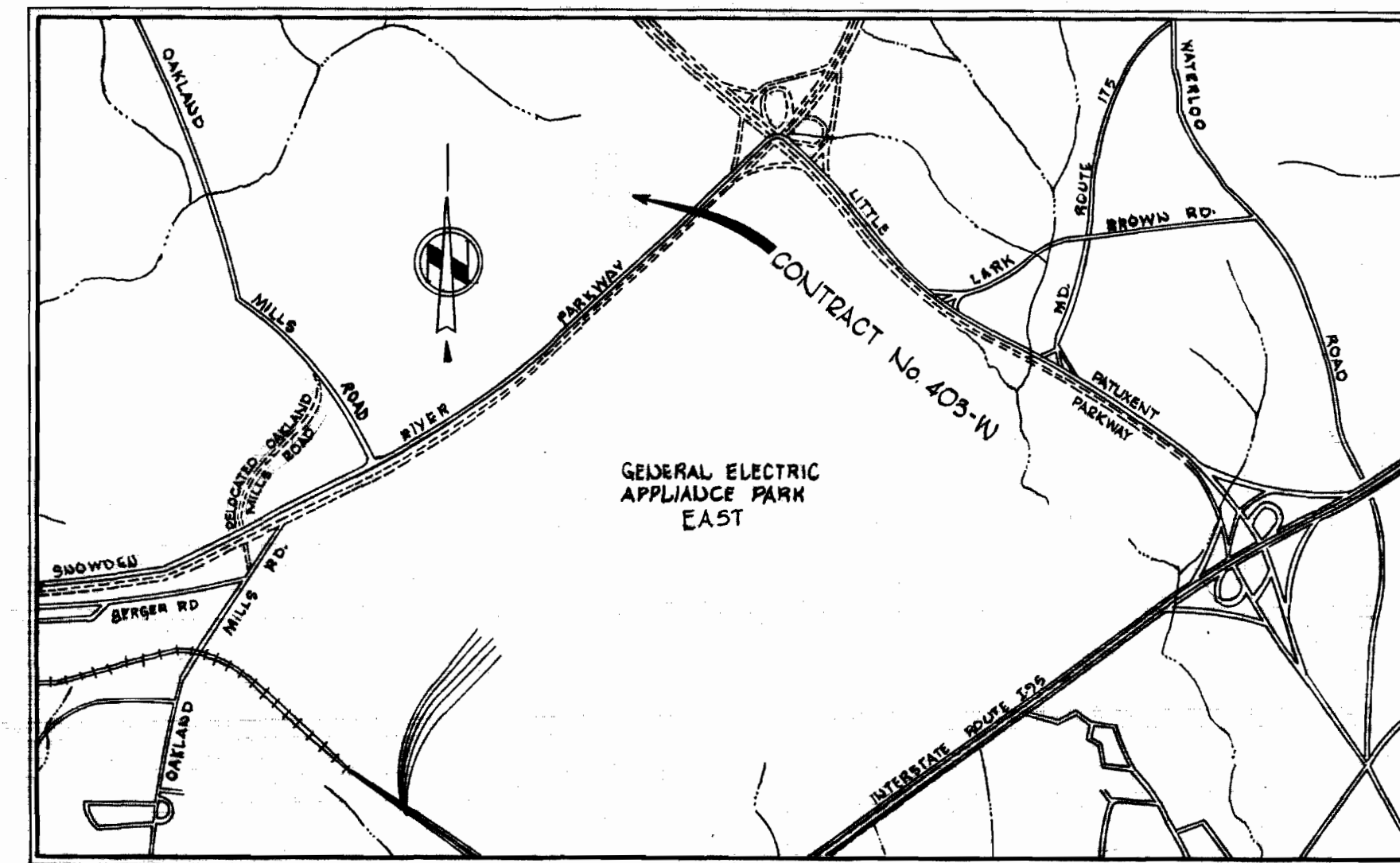


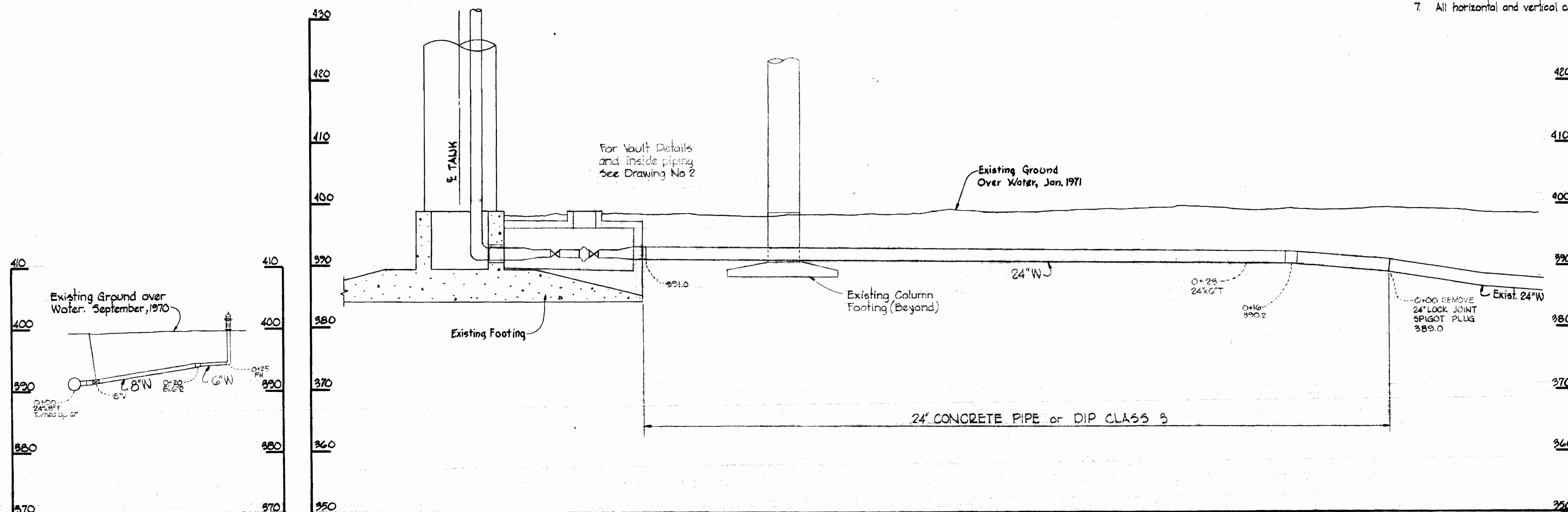
PLAN
Scale: 1"=50'



VICINITY MAP
Scale: 1"=1600'

GENERAL NOTES

1. Approximate location of existing mains are shown. The Contractor shall take all necessary precautions to protect existing mains and services and maintain uninterrupted supply. Any damage incurred shall be repaired immediately.
2. All pipe elevations shown are invert elevations.
3. The Contractor shall locate existing utilities a minimum of two weeks in advance of construction operations in vicinity of utilities.
4. For all standard details see standards bound in specifications.
5. All water mains shall have a minimum of 3 1/2' cover.
6. All fire hydrants shall be strapped to trees and buttressed with concrete in accordance with Standard Details.
7. All horizontal and vertical controls are based on Maryland State Datum.



PROFILE
Scale: H: 1"=10'
V: 1"=10'



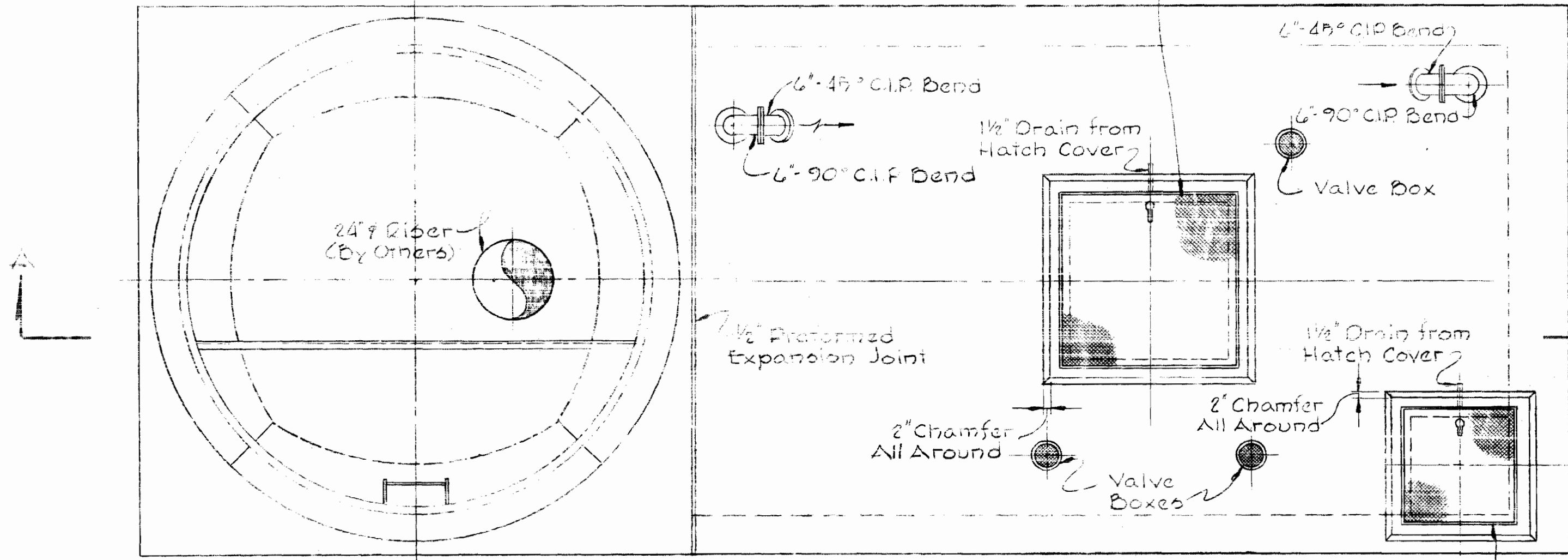
W. O. Filbert

Snowden River Elevated Tank
Contract No. 403-W

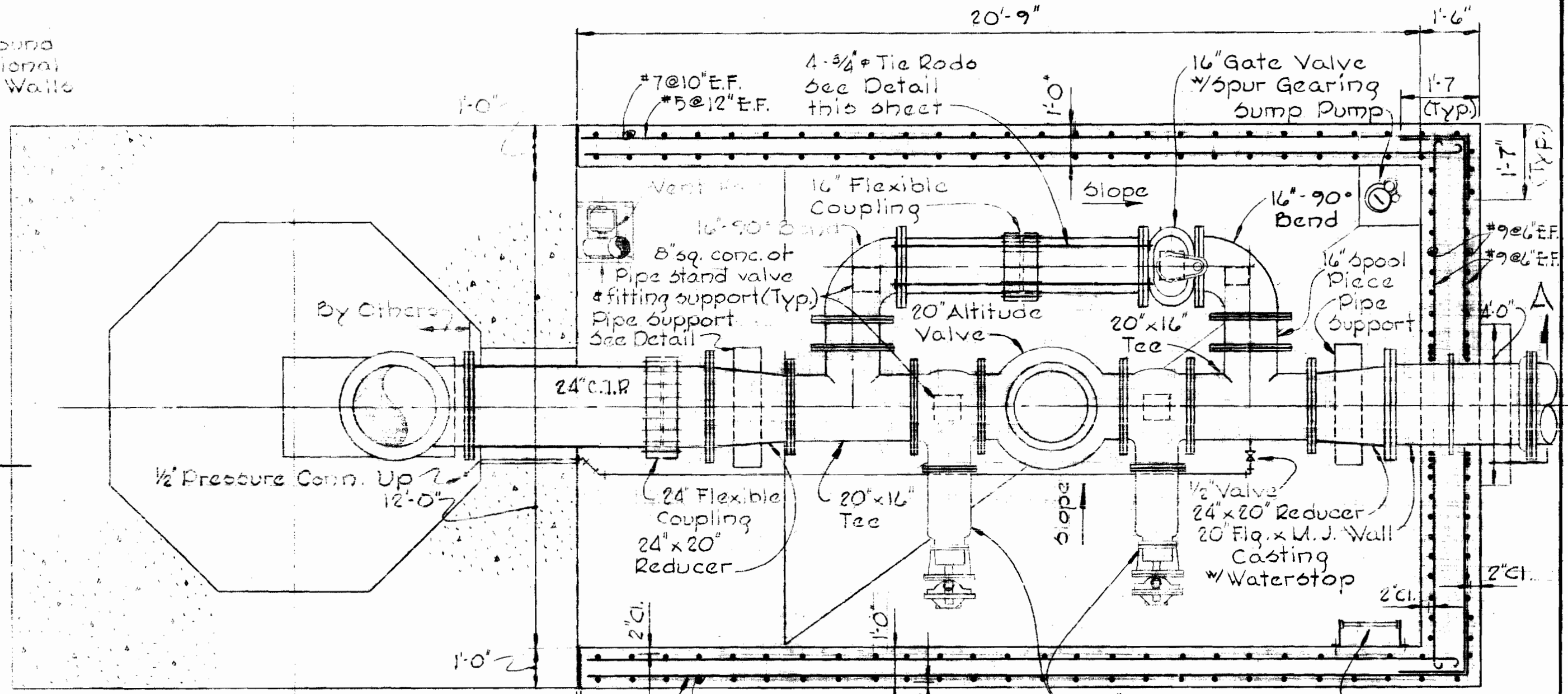
WHITMAN, REQUARDT & ASSOCIATES ENGINEERS 1304 ST. PAUL ST. BALTIMORE, MARYLAND	DEPARTMENT OF PUBLIC WORKS HOWARD COUNTY, MARYLAND DATE: 1-26-71 <i>W. O. Filbert</i> CHIEF - BUREAU OF WATER AND SEWER	CONTRACT NO. 403-W	PLAN AND PROFILE OF WATER MAIN	SNOWDEN RIVER ELEVATED TANK VALVE VAULT AND LIGHTING	DRAWING NO. 1 OF 3 SCALE AS SHOWN 498-487
--	--	---------------------------	---------------------------------------	---	---

Note: Exact location of valve boxes to be determined from actual valve purchased. Center of boxes to be located exactly over gate valve operating nuts.

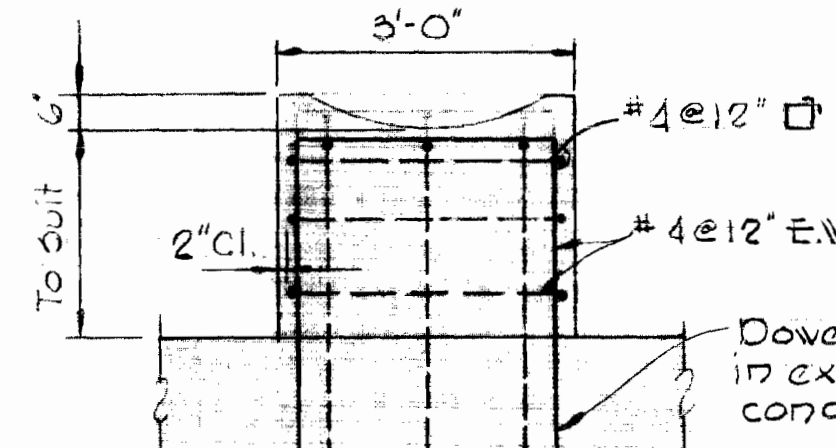
Bilco Type J-2 Hatch 48" x 48" Alum. Place Additional Reinforcing Around Opening in Slab Similar to Additional Reinforcing Around Openings in Walls



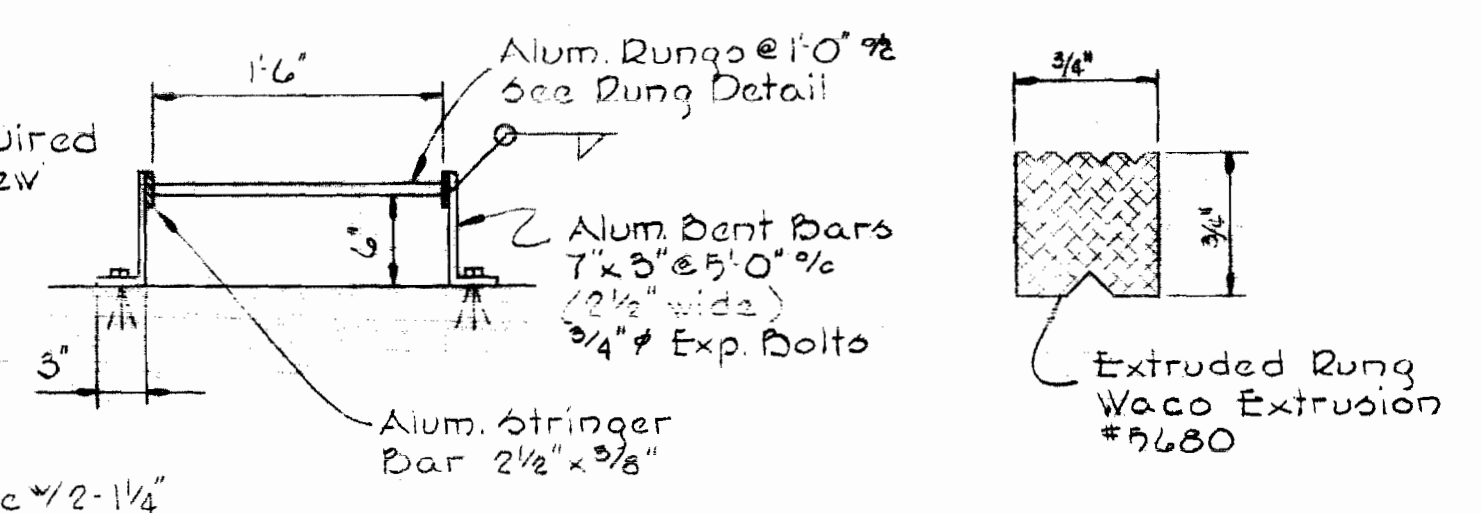
PLAN - TOP SLAB
Scale: 3/8" = 1'-0"



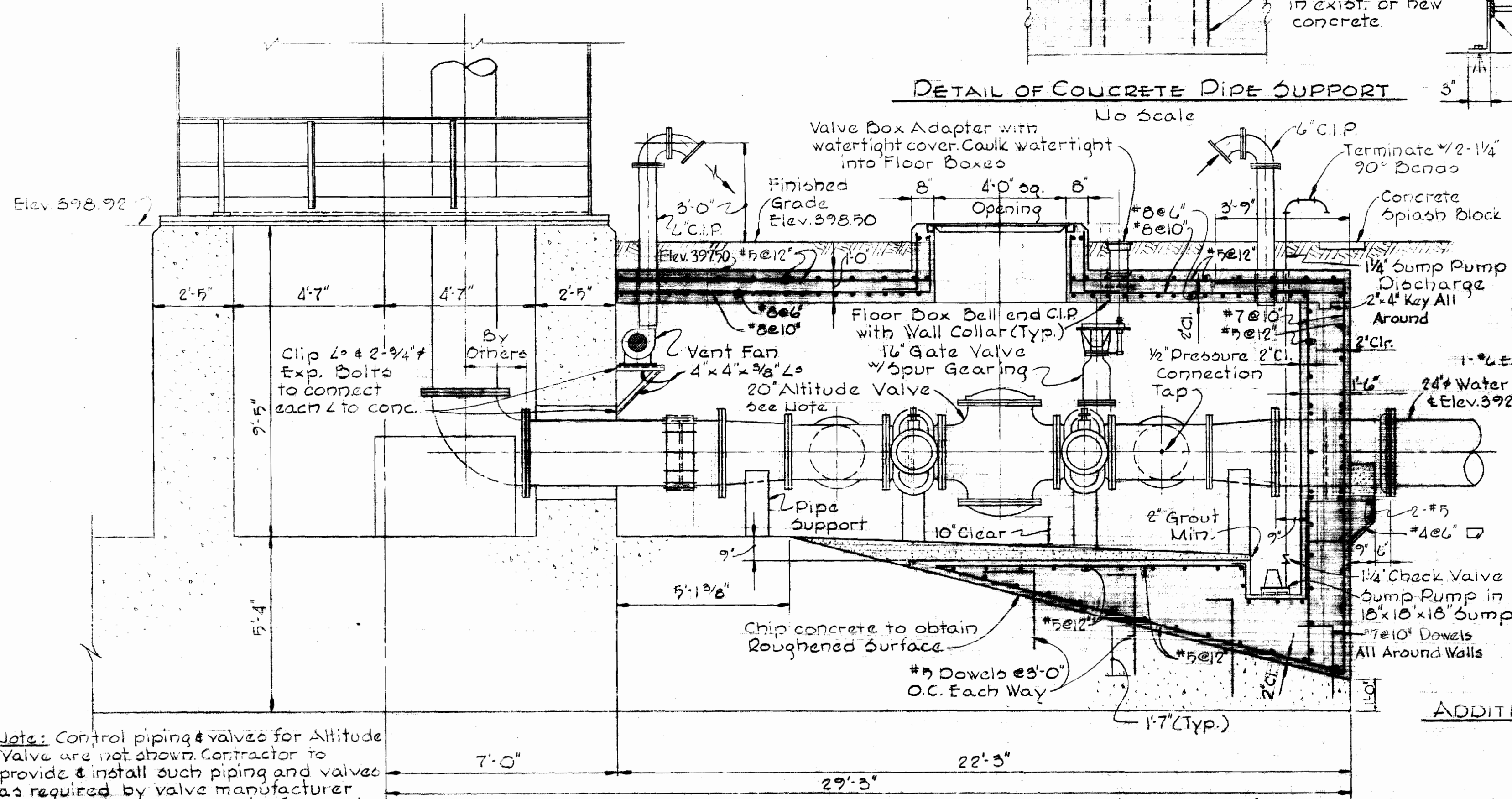
PLAN - VALVE VAULT
Scale: 3/8" = 1'-0"



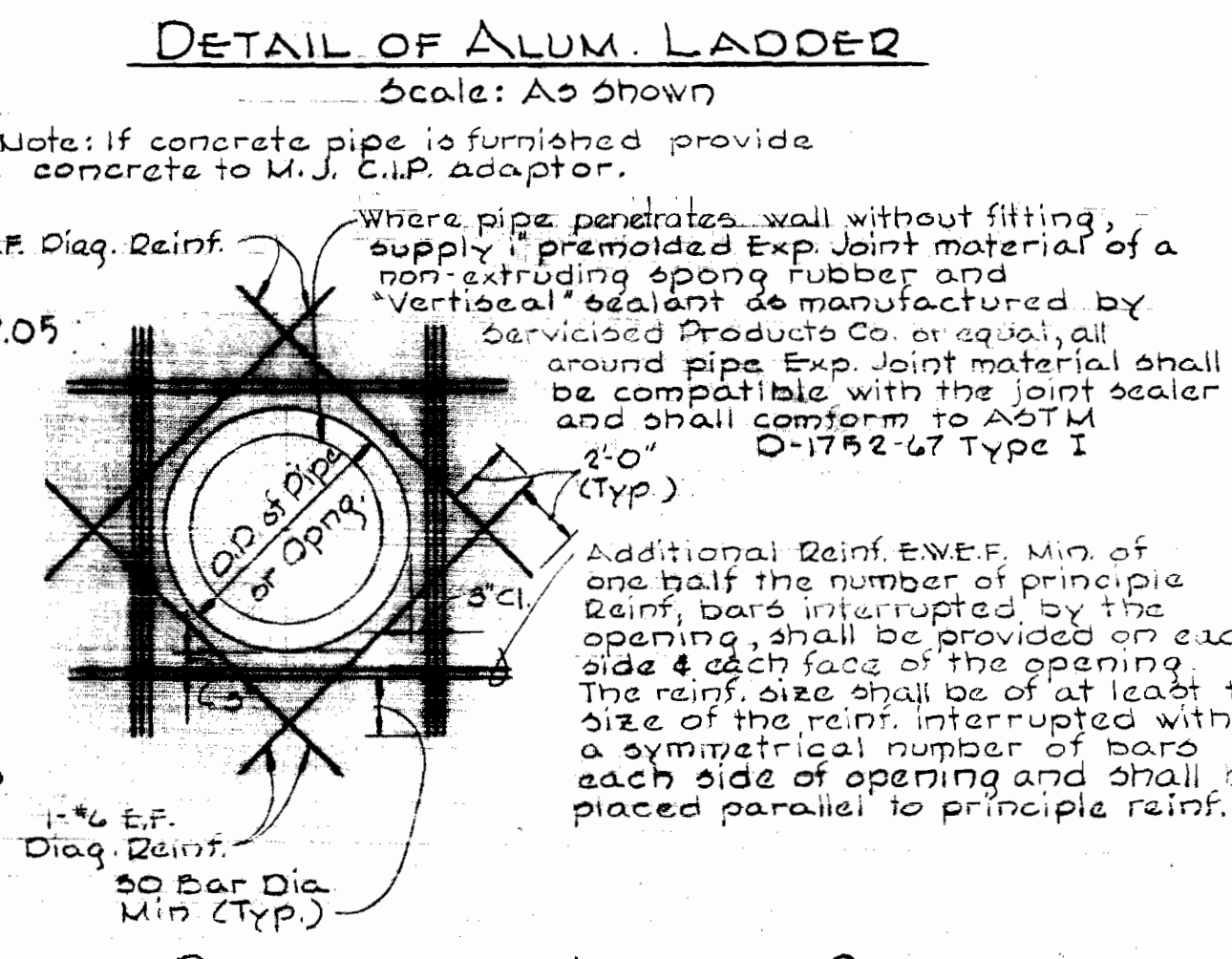
DETAIL OF CONCRETE PIPE SUPPORT
No Scale



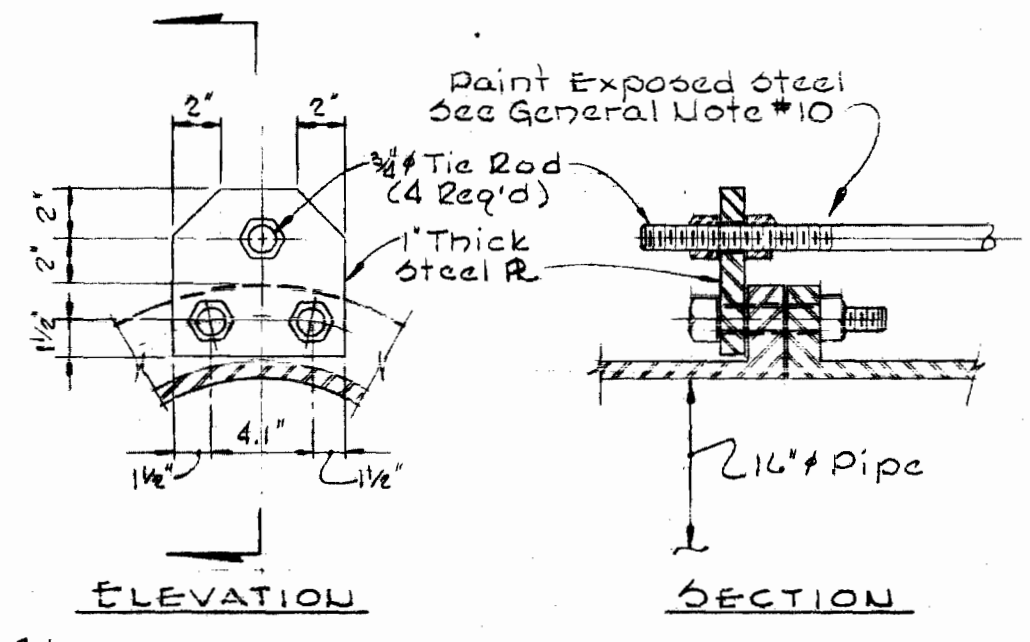
DETAIL OF ALUM. LADDER
Scale: As Shown



SECTION A-A
Scale: 3/8" = 1'-0"



ADDITIONAL REINFORCING AROUND OPENINGS IN WALLS
No Scale



TIE ROD DETAIL
No Scale



Kenneth M. Lord
GENERAL NOTES

1. Specification for design A.A.S.H.O. Standard specification for Highway Bridges, 10th Edition, 1969 and Interim Specification, 1970.
2. Design Live Load: H20-44.
3. Concrete shall have a min. compressive strength of 3500 psi at 28 days and shall be air entrained.
4. All exposed edges of concrete to be chamfered 3/4" unless otherwise noted.
5. Reinforcing steel shall conform to ASTM A615-70 Grade 40.
6. Reinforcing bar laps and dowel projections shall be 30 diameters unless otherwise noted.
7. Concrete cover for reinforcing bars shall be as noted.
8. Structural steel shall conform to ASTM A36-70.
9. All structural steel connections may be bolted or welded.
10. All structural steel except for items embedded in concrete shall be shop primed with one coat of Kopper's Pug Primer. After steel is in place in the field, two coats of Kopper's Rustarmor 200 shall be applied.

Note: Control piping & valves for Altitude Valve are not shown. Contractor to provide & install such piping and valves as required by valve manufacturer if not furnished as part of the valve.

Note: Drill into exist. foundation for dowels. Set all dowels with Embecco non-shrink grout as manufactured by the Master Builders of Cleveland, Ohio or an approved equal.

WHITMAN, REQUARDT & ASSOCIATES
ENGINEERS
1304 ST. PAUL ST.
BALTIMORE, MARYLAND

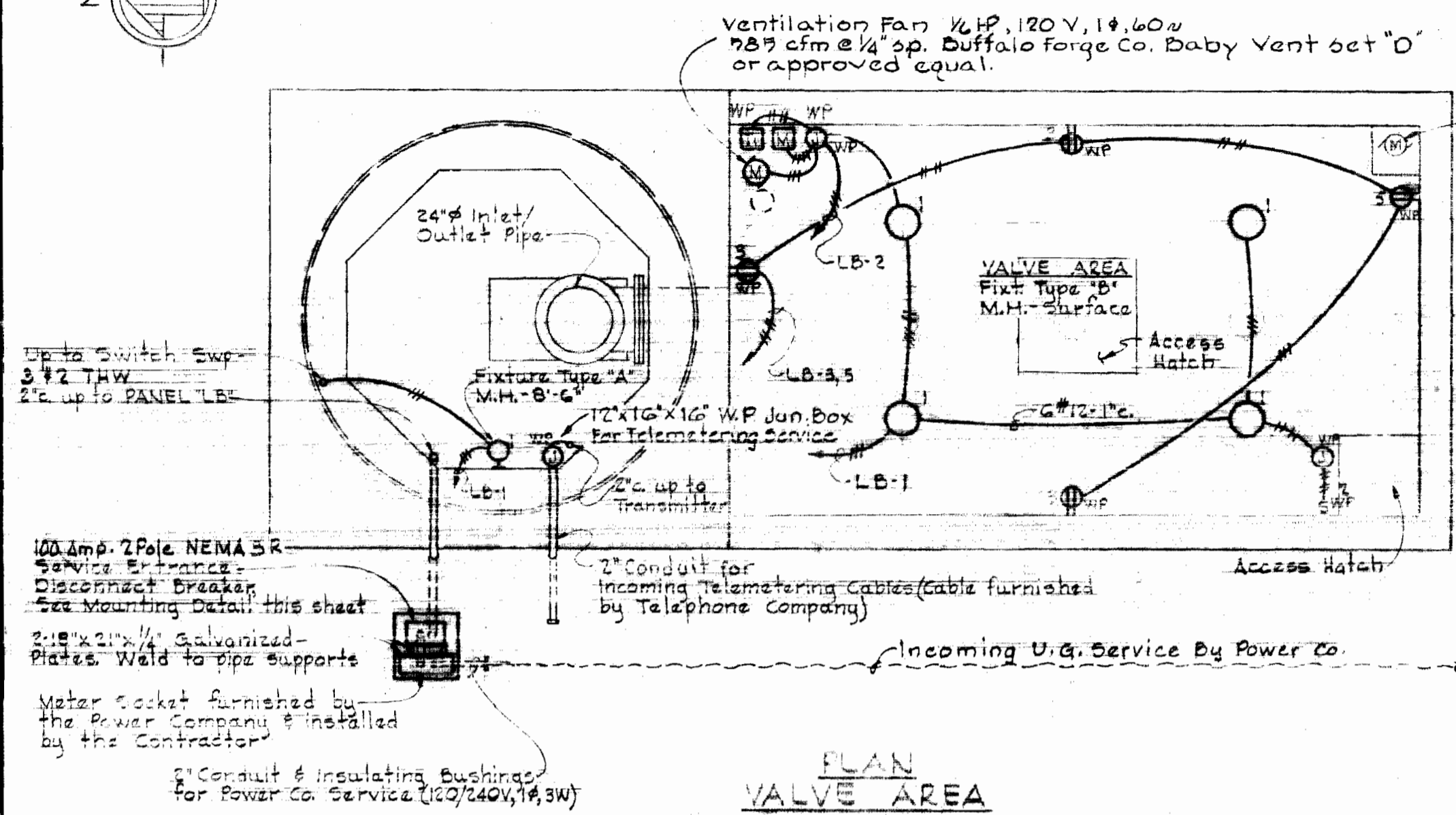
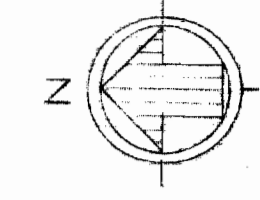
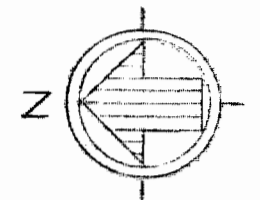
DEPARTMENT OF PUBLIC WORKS
HOWARD COUNTY, MARYLAND
1-26-71
W.O. Felber
CHIEF - BUREAU OF WATER AND SEWER

CONTRACT NO. 403-W

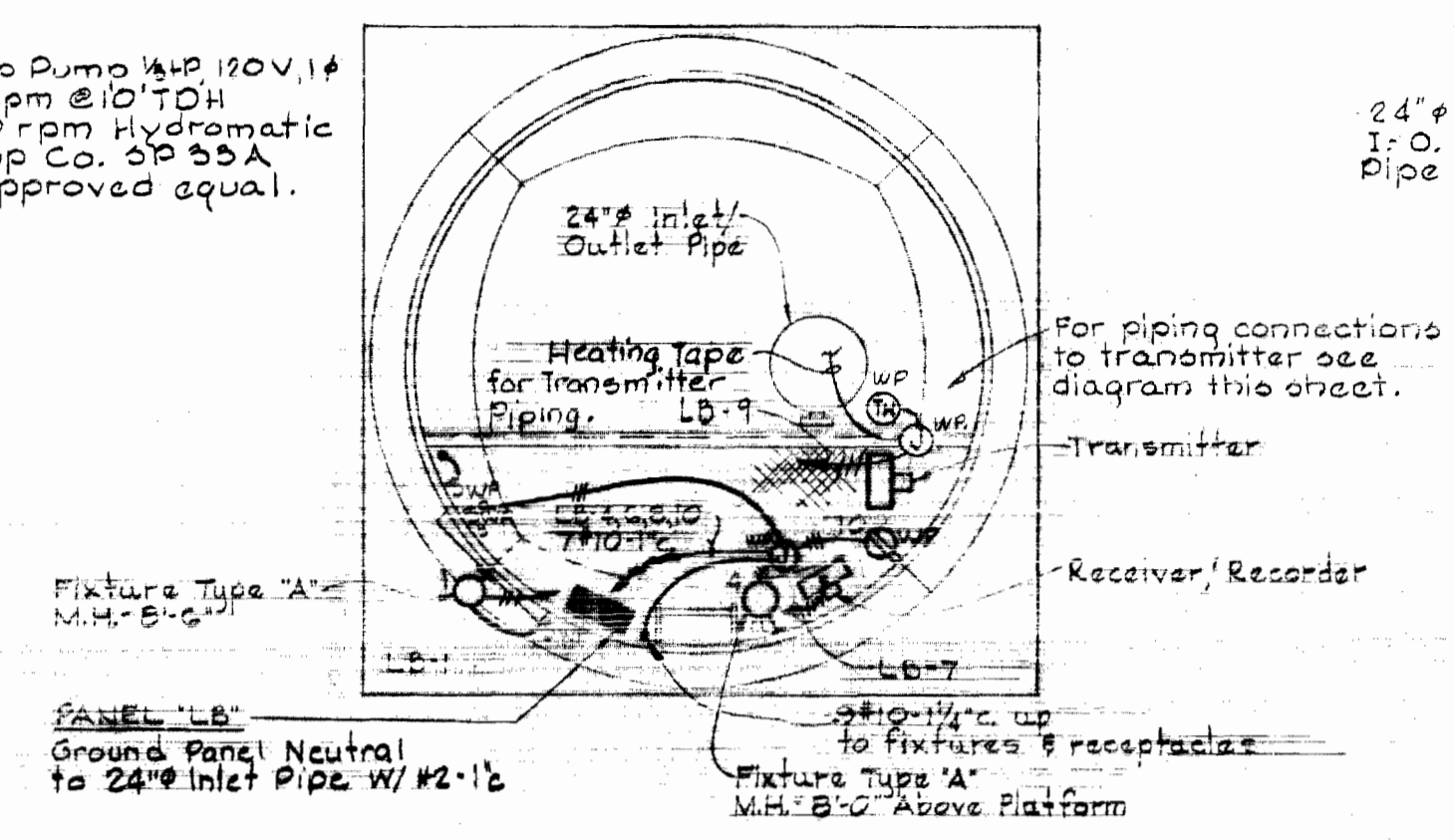
MECHANICAL AND
STRUCTURAL DETAILS

SNOWDEN RIVER ELEVATED TANK
VALVE VAULT AND LIGHTING

DRAWING NO. 2 OF 3
SCALE AS SHOWN



PLAN VALVE AREA
Scale: 1/4" = 1'-0"



PLAN BOTTOM PLATFORM
Scale: 1/4" = 1'-0"

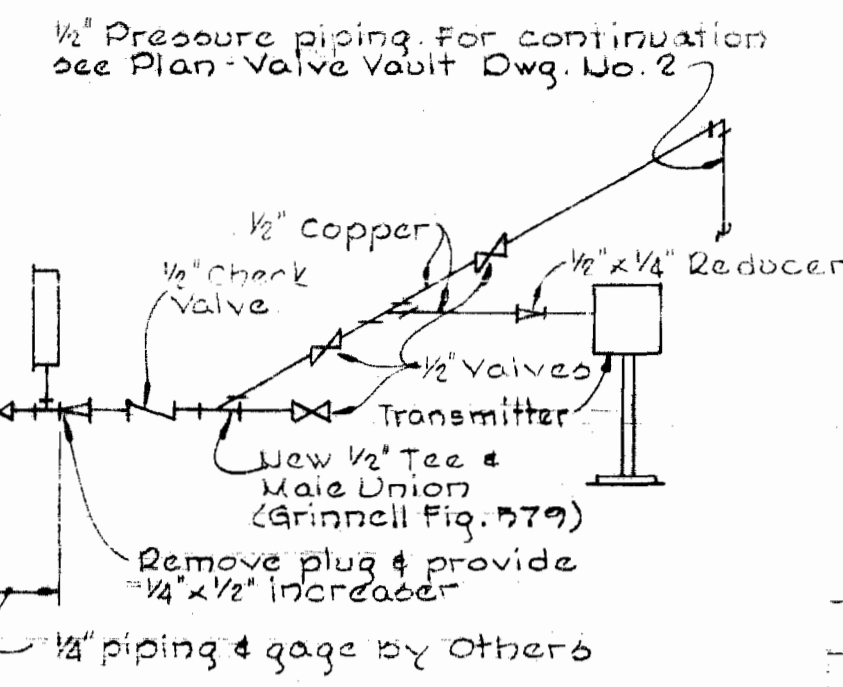
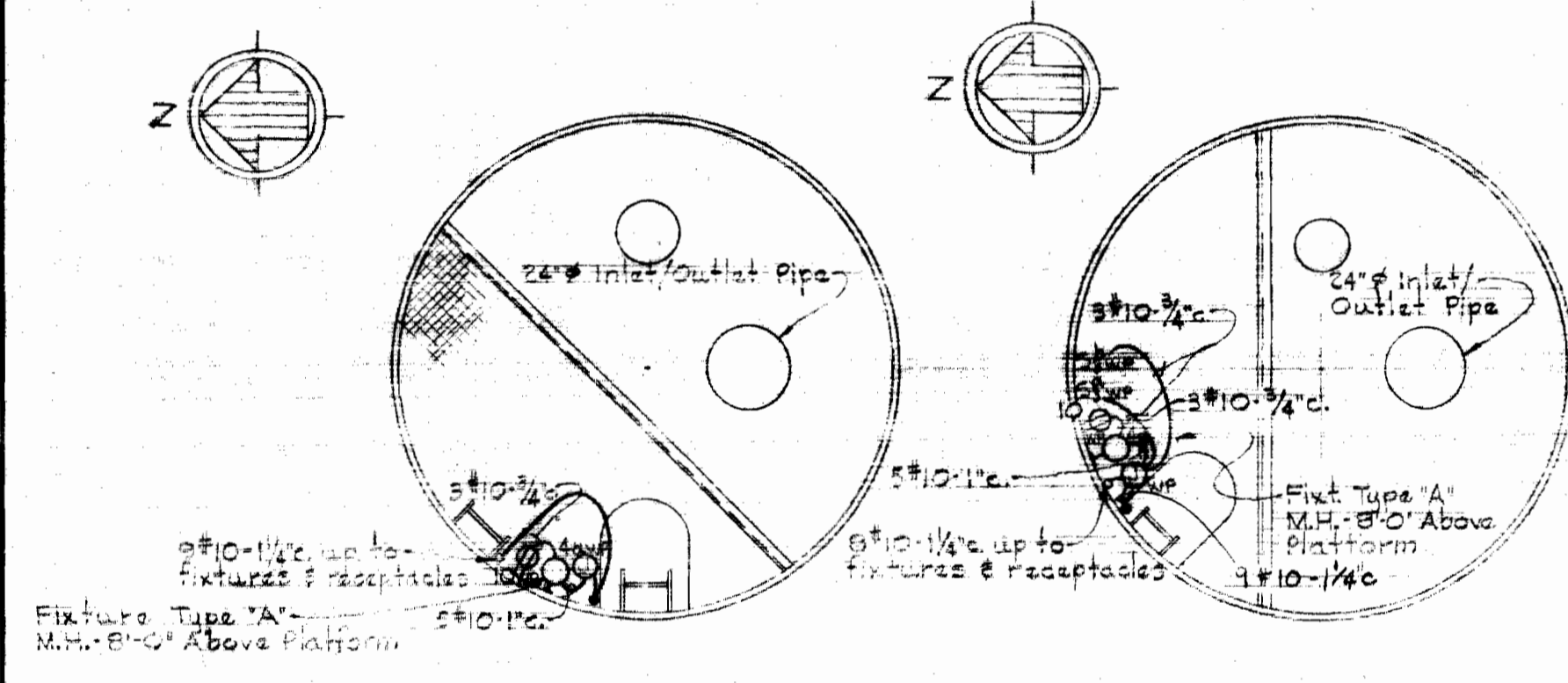


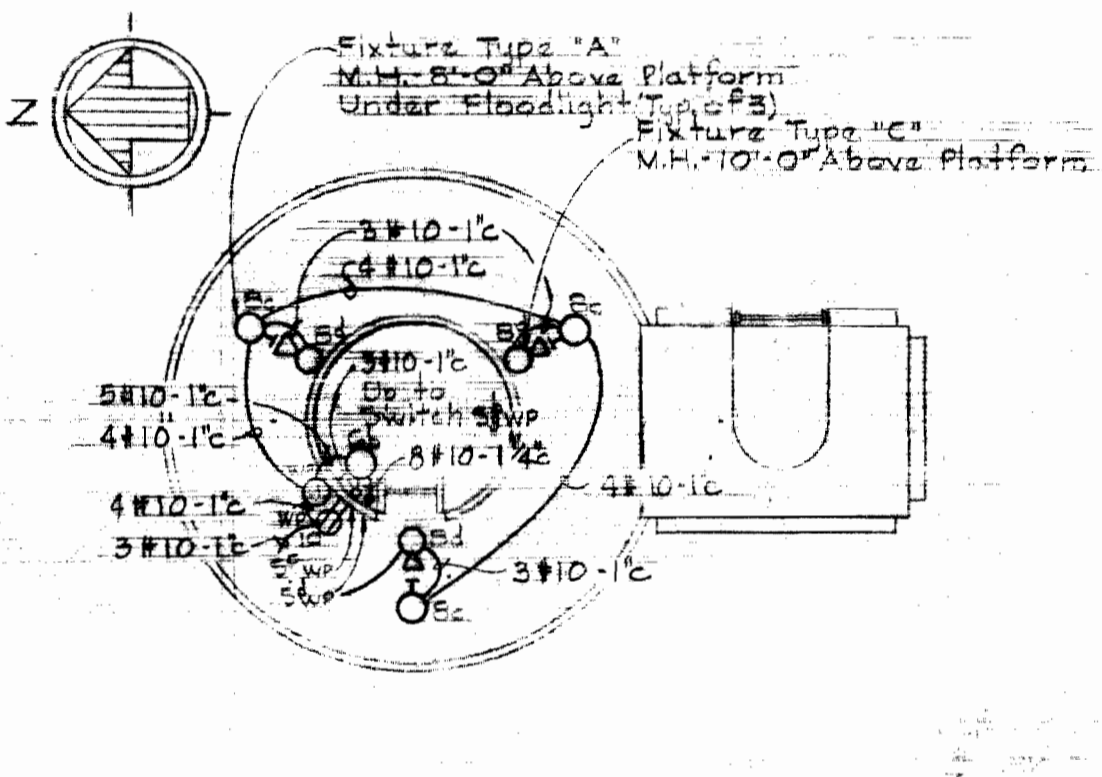
DIAGRAM TRANSMITTER PIPING
No scale
NOTE: Transmitter Piping Wrapped with Heating Tape.

- ELECTRICAL LEGEND**
- Outlet-Incandescent - Ceiling
 - Outlet-Incandescent - Bracketed
 - △ Outlet-Incandescent - Flood Type - Bracketed
 - ⊕ Outlet - Convenience - Nity. Ht.
 - S 2 Switch - Single Pole - Two Pole
 - S 3 Switch - Three Way
 - ⊖ Thermostat - Heating
 - Ⓜ Motor
 - Ⓜ Junction Box
 - Conduit - On Ceiling or Wall
 - - - Conduit - In or Under Floor
 - Home run To Panelboard - N° of Arrows Indicates N° of Circuits - N° of Cross Lines Indicates N° of Wires. Where No Cross Lines Appear, 2 Conductors Are Implied.
 - WP Weatherproof
 - T Timer
 - M Motor Starter - Manual
 - Conduit - Turned Down
 - Conduit - Turned Up

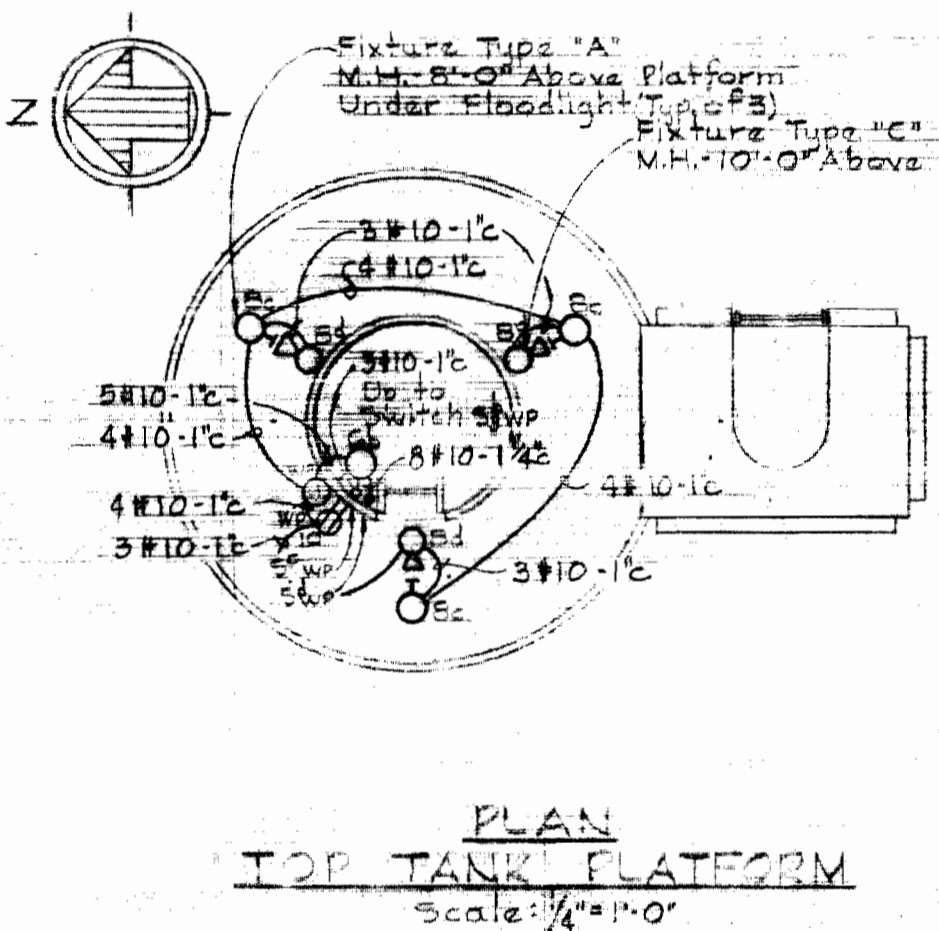
- GENERAL ELECTRICAL NOTES**
1. The Panelboard Schedules, See Specifications, Detailed Electrical Requirements.
 2. For Lighting Fixture Types, See Specifications, Detailed Electrical Requirements.
 3. Verify All Door Swings Before Installing Switches.
 4. Mounting Heights For Lighting Fixtures Shall Be From Finished Floor To Bottom of Fixture Unless Otherwise Noted.



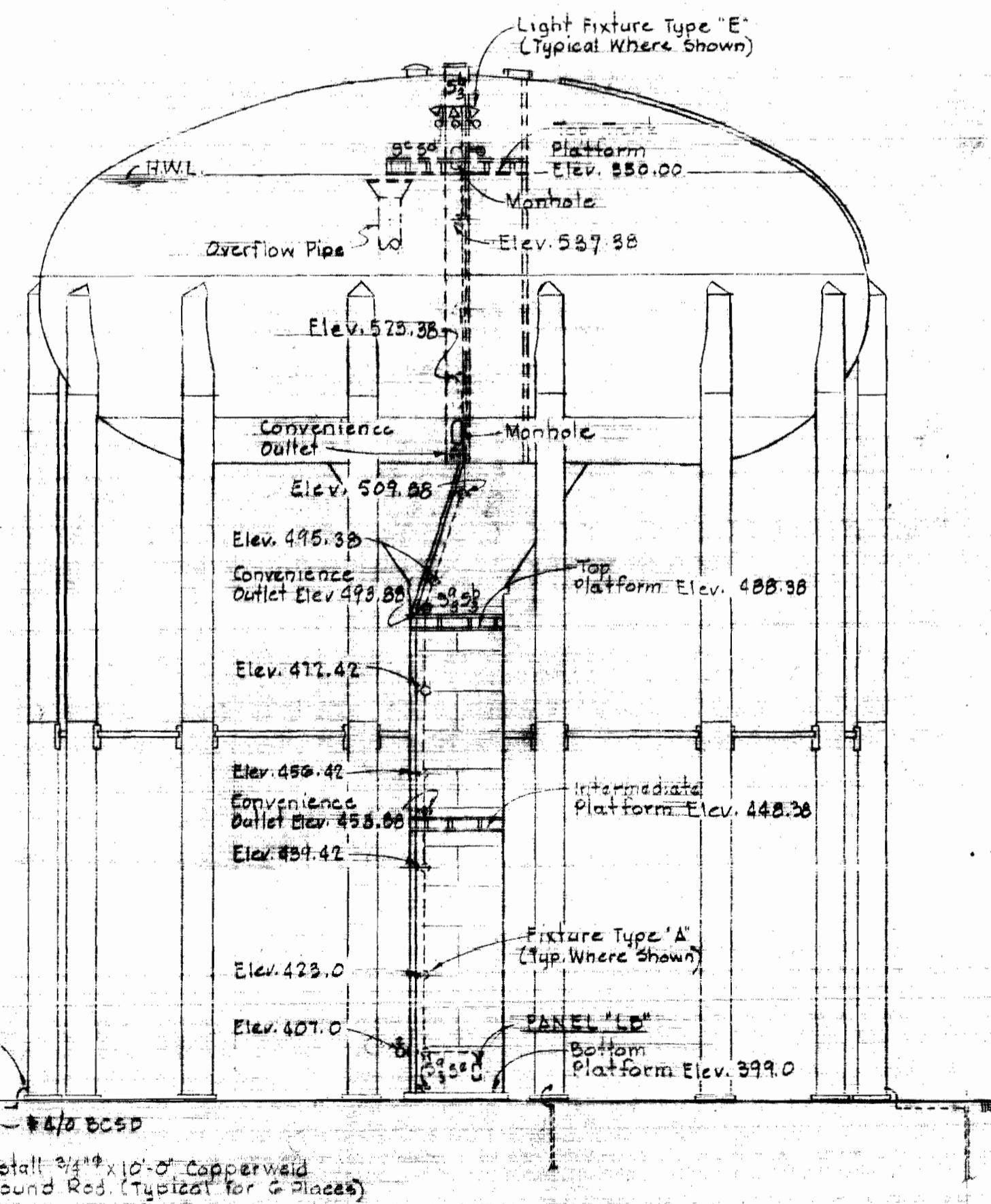
PLAN INTERMEDIATE PLATFORM
Scale: 1/4" = 1'-0"



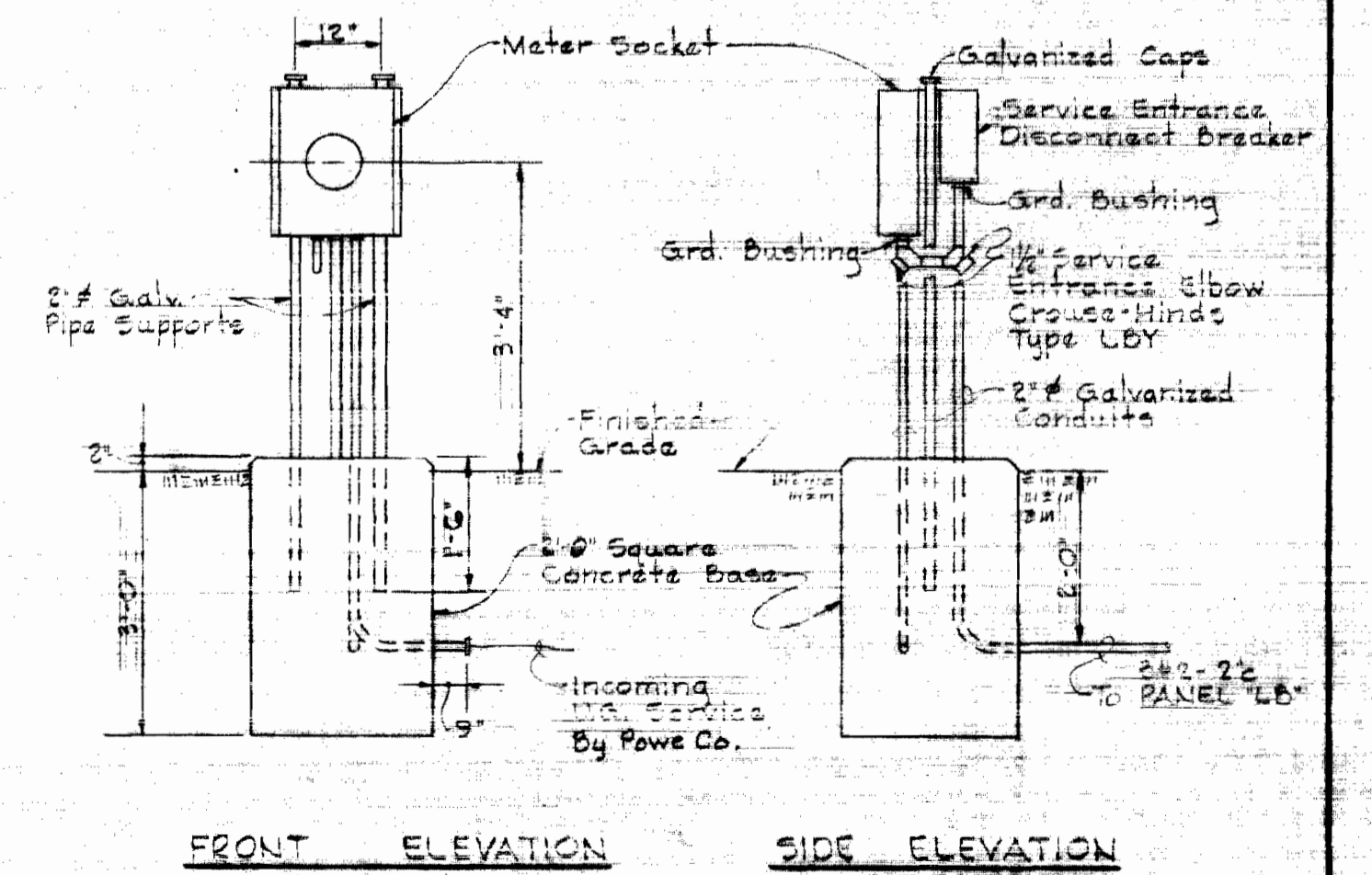
PLAN TOP PLATFORM
Scale: 1/4" = 1'-0"



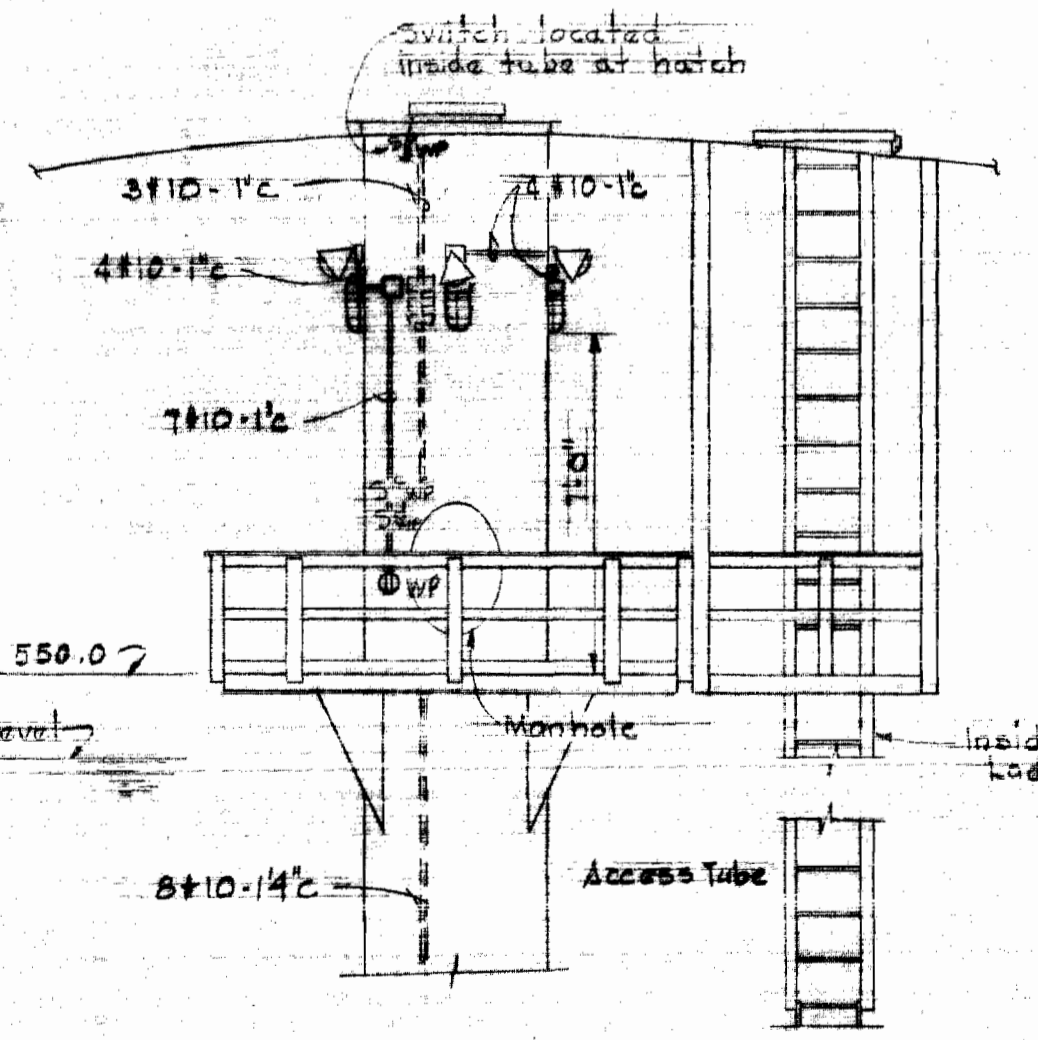
PLAN TOP TANK PLATFORM
Scale: 1/4" = 1'-0"



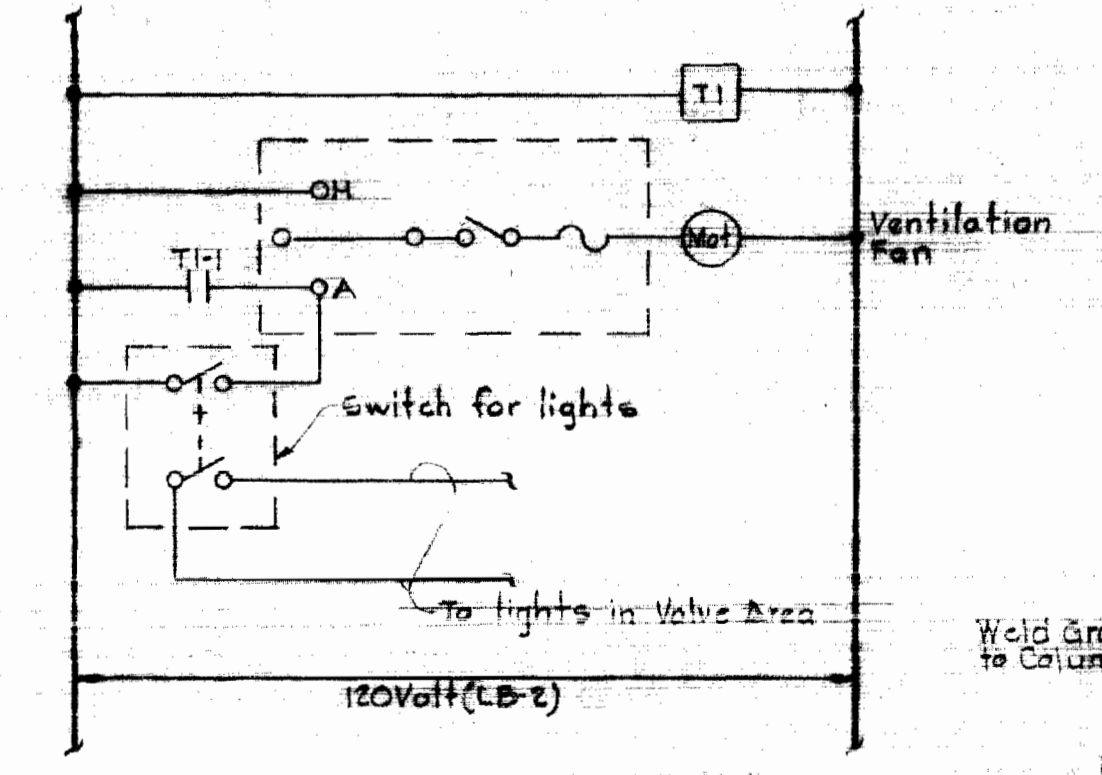
ELEVATION ELEVATED WATER STORAGE TANK
Not to Scale



MOUNTING DETAIL FOR METER AND MAIN BREAKER
Scale: 1/2" = 1'-0"



ELEVATION TOP TANK PLATFORM
Not to Scale



ELEMENTARY CONTROL DIAGRAM FOR VENTILATION FAN

WHITMAN, REQUARDT & ASSOCIATES
ENGINEERS
1304 ST. PAUL ST.
BALTIMORE, MARYLAND

DEPARTMENT OF PUBLIC WORKS
HOWARD COUNTY, MARYLAND
1-26-71
DATE
W. O. Pellett
CHIEF - BUREAU OF WATER AND SEWER

CONTRACT NO. 403-W

MECHANICAL AND ELECTRICAL DETAILS

SNOWDEN RIVER ELEVATED TANK VALVE VAULT AND LIGHTING

DRAWING NO. 3 OF 3 SCALE AS SHOWN



Kenneth M. Melrod