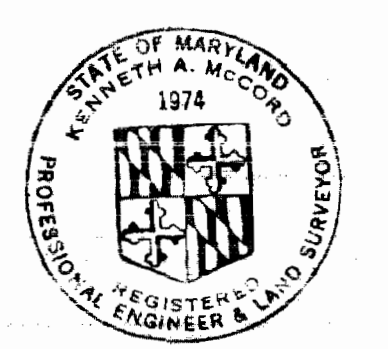


VICINITY MAP
Scale 1" = 1,200'

QUANTITIES	
8" Sewer	1270'
8" Water	1415'
6" Water	135'
Fire Hydrants	2

PLAN
Scale 1" = 50'

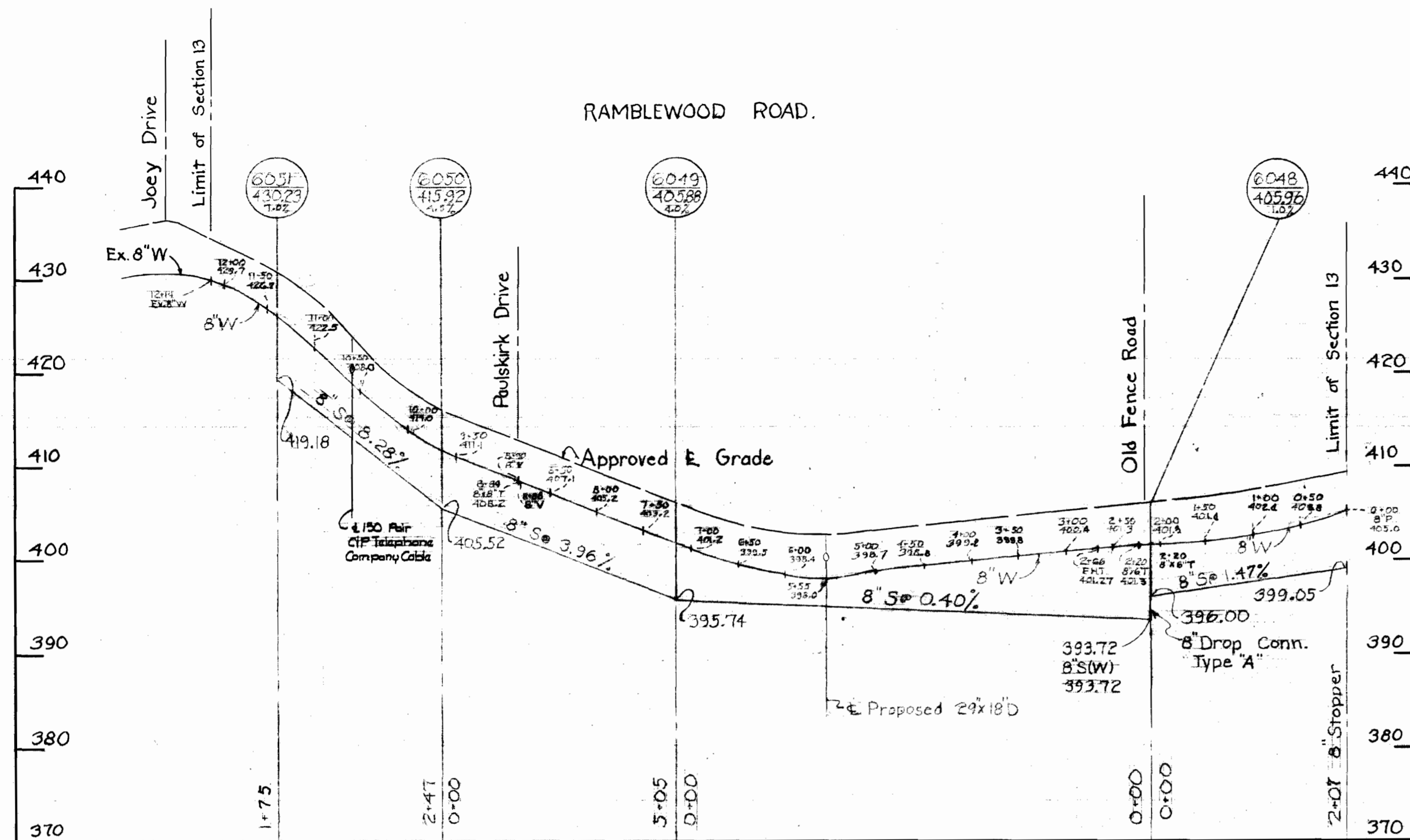


Kenneth A. McLeod

4 Stakeout and Diary P.B.# 2820

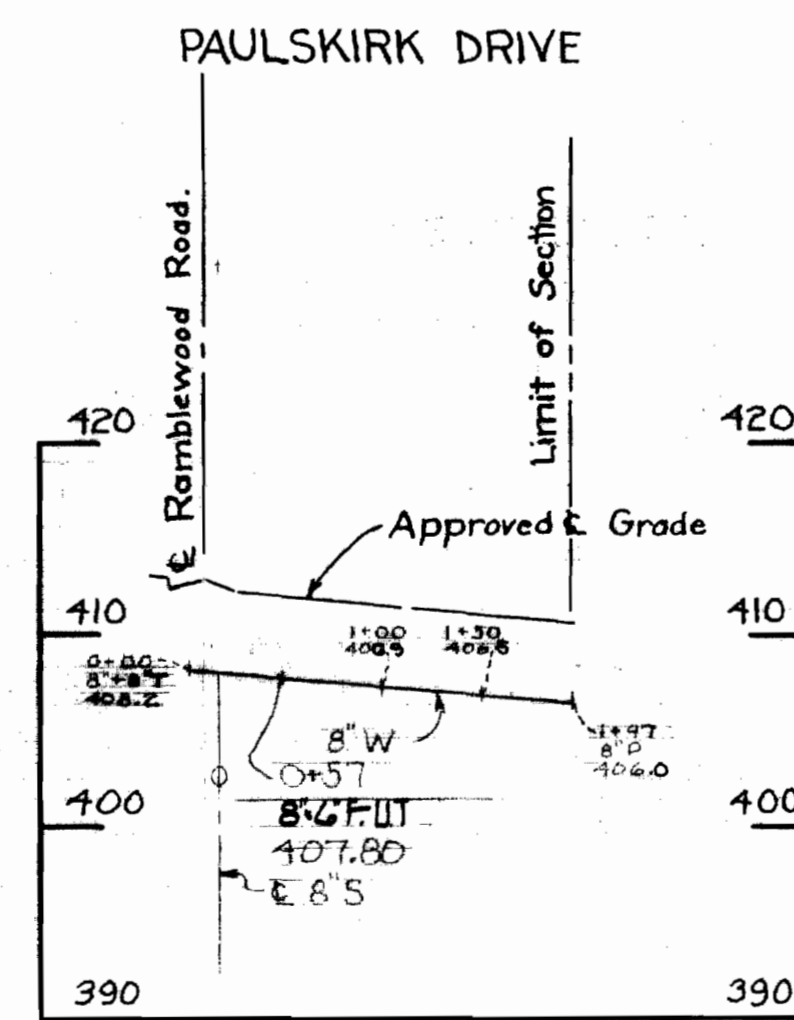
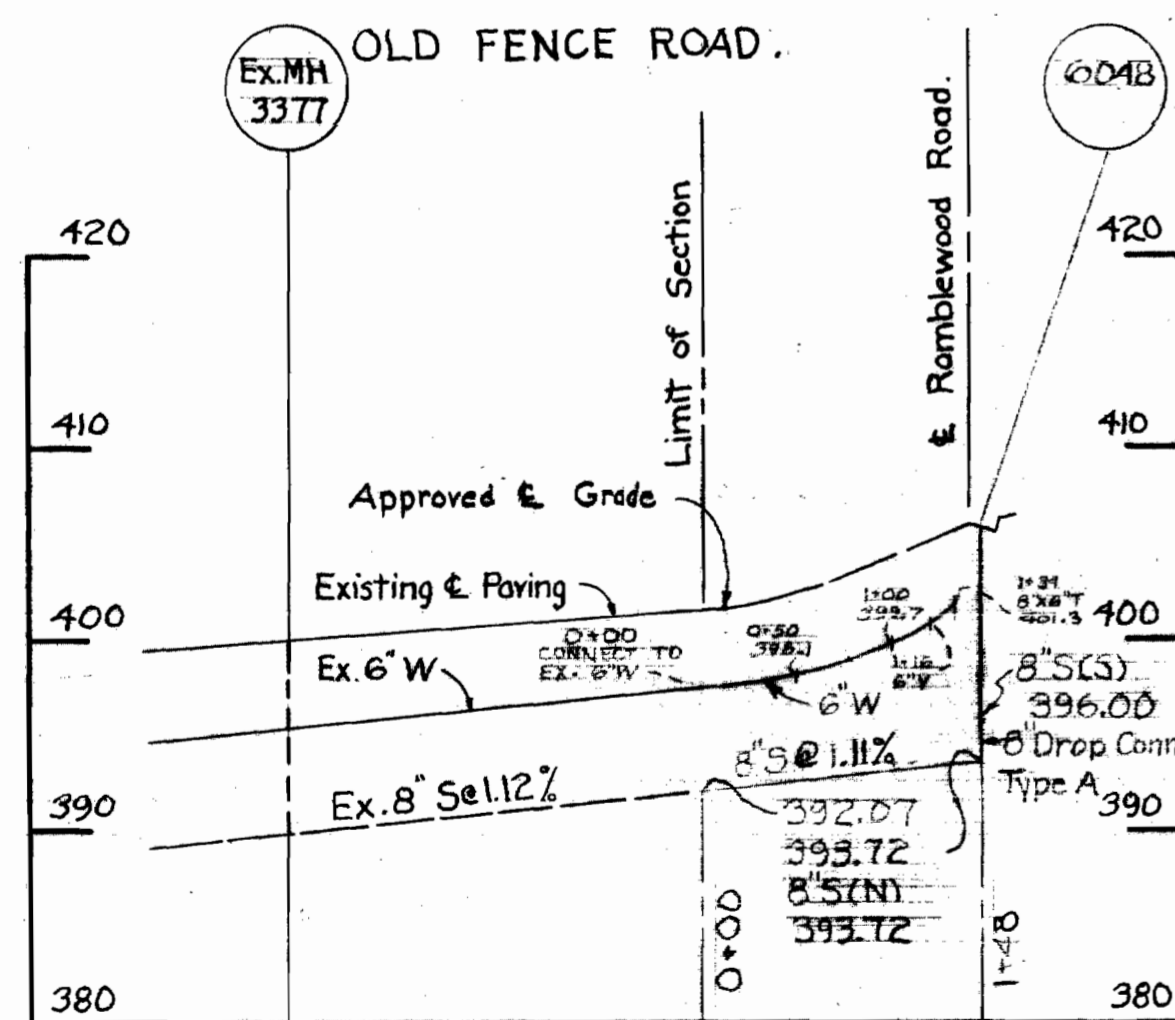
Chatham - Section 13
Contract - 384 - W&S

WHITMAN, REQUARDT & ASSOCIATES ENGINEERS 1304 ST. PAUL ST. BALTIMORE, MARYLAND	DEPARTMENT OF PUBLIC WORKS HOWARD COUNTY, MARYLAND 7-20-70 DATE <i>W. O. Palbert</i> CHIEF - BUREAU OF WATER AND SEWER	CONTRACT NO. 384 - W&S	PLAN OF WATER & SEWER MAINS	ELECTION DISTRICT ELLICOTT CITY NO. 1	DRAWING NO. 1	SCALE AS SHOWN
					OF 2	

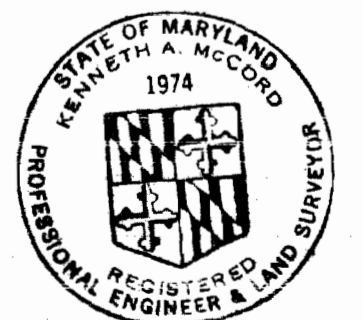


GENERAL NOTES

1. Approximate location of existing mains are shown. The Contractor shall take all necessary precautions to protect existing mains and services and maintain uninterrupted supply. Any damage incurred shall be repaired immediately.
2. All pipe elevations shown are invert \odot elevations.
3. The Contractor shall locate existing utilities a minimum of two weeks in advance of construction operations in vicinity of utilities.
4. For all standard details see standards bound in Specifications.
5. All water mains are to have a minimum of 3' cover.
6. Block all fittings with concrete, see standards bound in Specifications.
7. Bury Line elevations on fire hydrants shall be set to the elevations shown on the drawing.
8. All fire hydrants shall be strapped to the tee and shall be buttressed with concrete in accordance with Standard Details.
9. Clear all utilities by a minimum of 6'; Clear all poles by 2'-0" minimum, or tunnel as required.
10. The Contractor shall provide a joint in all sewer mains within 2'-0" of exterior manhole wall.
11. All sewer pipe shall be V.C.S.X., C.S.P.X., or A.C.P. Class 2400.
12. All horizontal and vertical controls are based on Howard County Datum.



PROFILE
 H: 1" = 100'
 Scale: V: 1" = 10'



Kenneth A. McCord

All Sewer Pipe - V.C.P.X.
 All Water Pipe - Cast Iron

Contract No. 384-W&S
 Chatham Section 13

WHITMAN, REQUARDT & ASSOCIATES ENGINEERS 1304 ST. PAUL ST. BALTIMORE, MARYLAND	DEPARTMENT OF PUBLIC WORKS HOWARD COUNTY, MARYLAND DATE: 7-20-70 <i>W. O. Pillant</i> CHIEF - BUREAU OF WATER AND SEWER	CONTRACT NO. 384-W&S	PROFILE OF WATER & SEWER MAINS	ELECTION DISTRICT ELLICOTT CITY NO. 2	DRAWING NO. 2 OF 2 SCALE AS SHOWN
--	--	---------------------------------	---	--	---

WS 384-W&S/2