

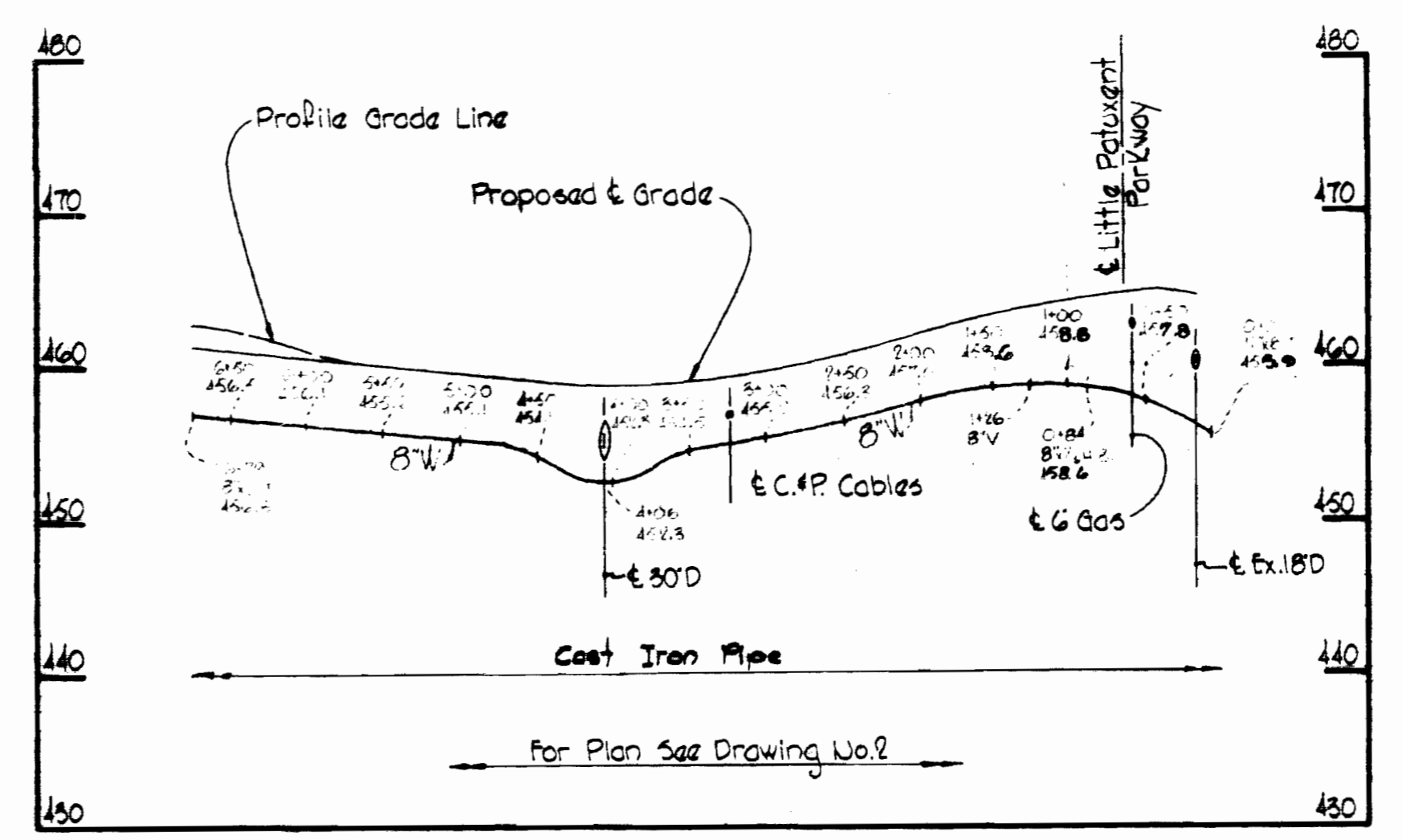
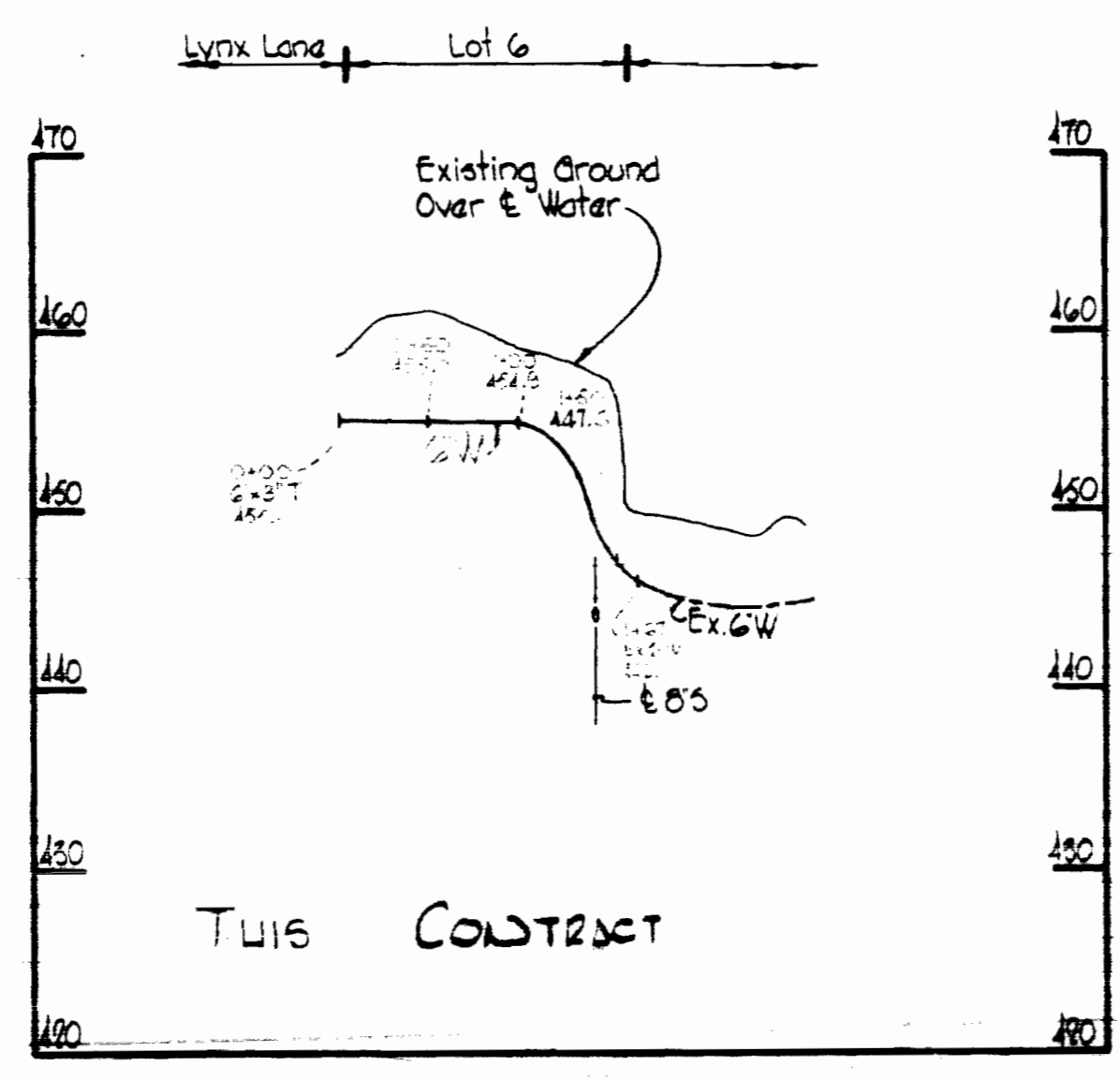
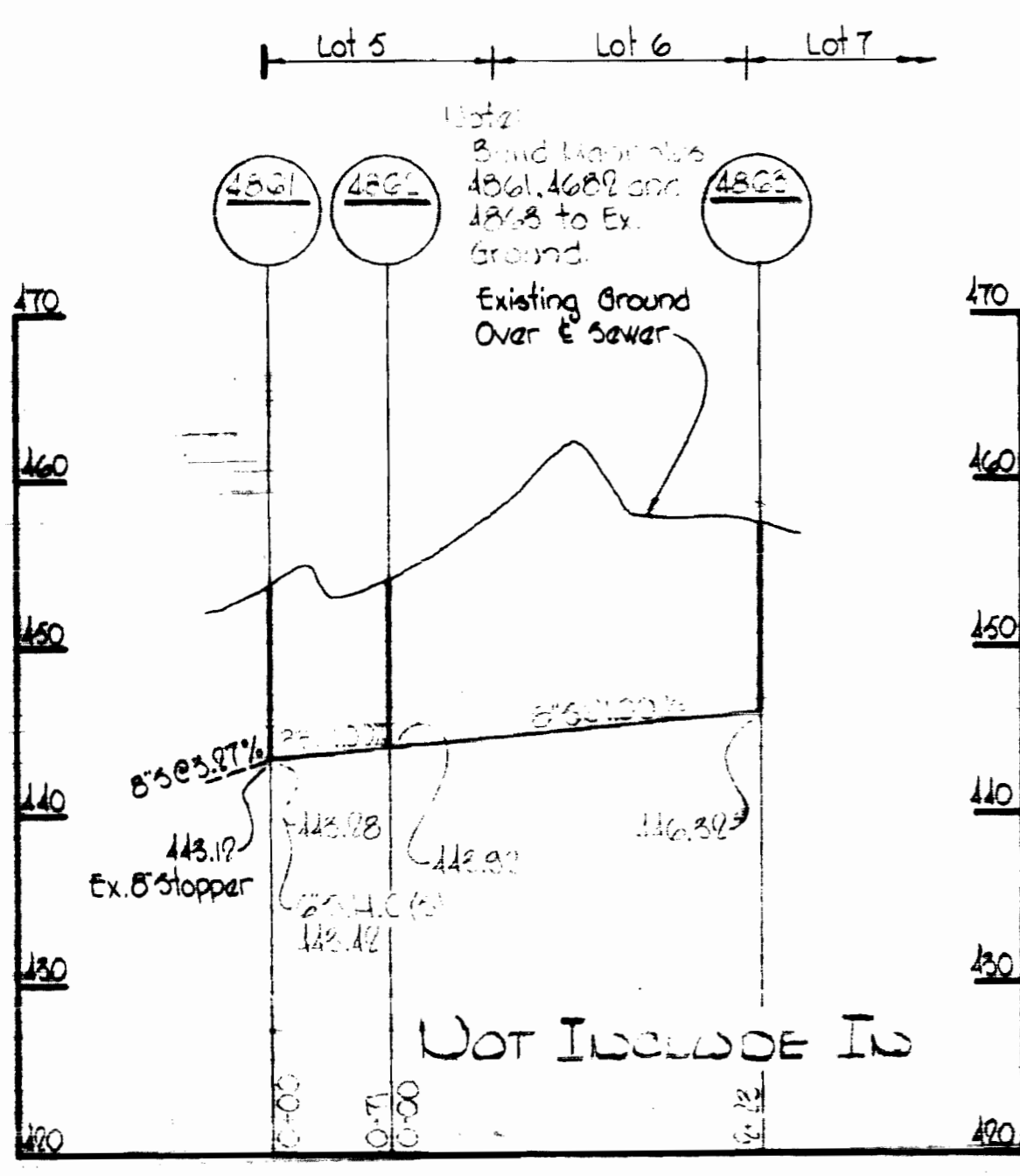
VICINITY MAP
Scale: 1"=800'

QUANTITIES	
8" Sewer	270.0
8" Water	150.0
6" Water	150.0
8" Water	150.0
12" Water	85.0

NOT INCLUDE IN THIS CONTRACT

GENERAL NOTES

1. Approximate location of existing mains are shown. The Contractor shall take all necessary precautions to protect existing mains and services and maintain uninterrupted supply. Any damage incurred shall be repaired immediately.
2. All pipe elevations shown are invert elevations.
3. The Contractor shall locate existing utilities a minimum of two weeks in advance of construction operations in vicinity of utilities.
4. For all standard details see standards bound in specifications.
5. All horizontal and vertical controls are based on Maryland State Datum.
6. Clear all utilities by a minimum of 6'; Clear all poles by a minimum of 9' or tunnel as required.
7. All water mains are to have a minimum of 3 1/2' cover.
8. Block all fittings with concrete, see standards bound in specifications.
9. Bury line elevations on fire hydrants shall be set to elevations shown on drawings or as directed by the Engineer in the field.
10. All fire hydrants shall be strapped and buttressed in accordance with Standard Details.
11. Cost of strapping fire hydrants and valves to tees to be included in unit price bid for furnishing and laying of water mains.
12. The Contractor shall provide a joint in all sewer mains within 2' of exterior manhole walls.
13. All manholes shall be 40" inside diameter.



PROFILES

Scale: Horz. 1"=100'
Vert. 1"=10'

3-16-77 SHEET 4 WAS ADDED TO THIS CONTRACT
NO. OF SHEETS WAS REV. FOR THIS ADDITION
Revision

Kenneth M. Wood

Stakeout and Diary in F.B. # 4705

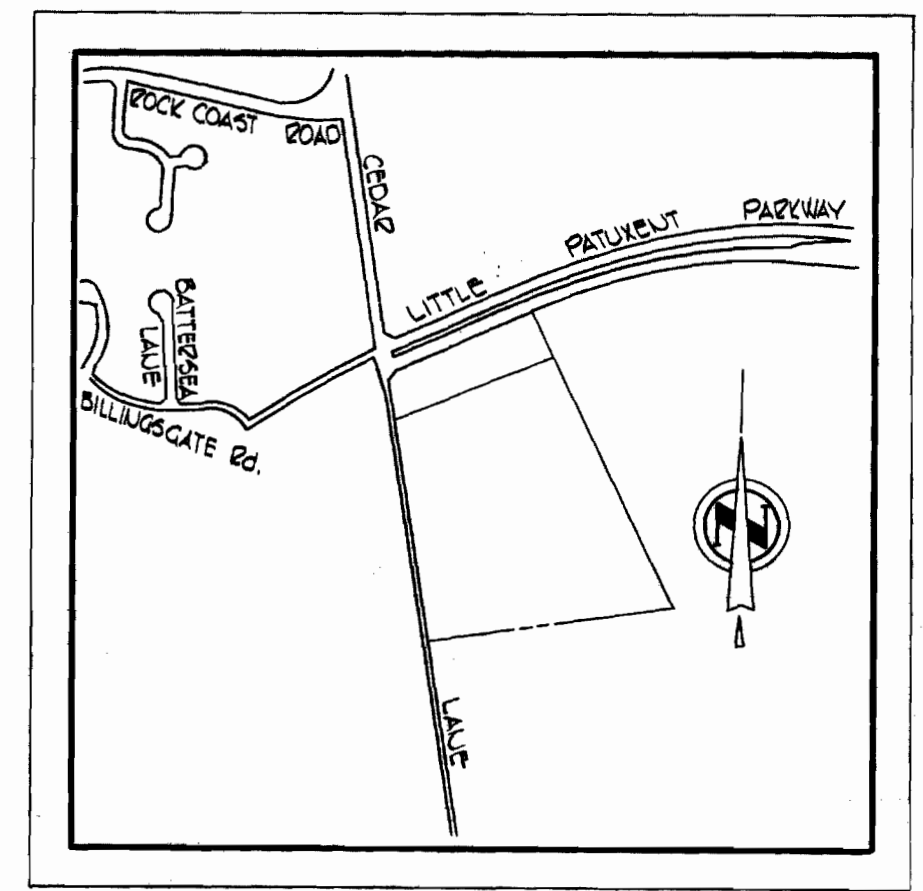
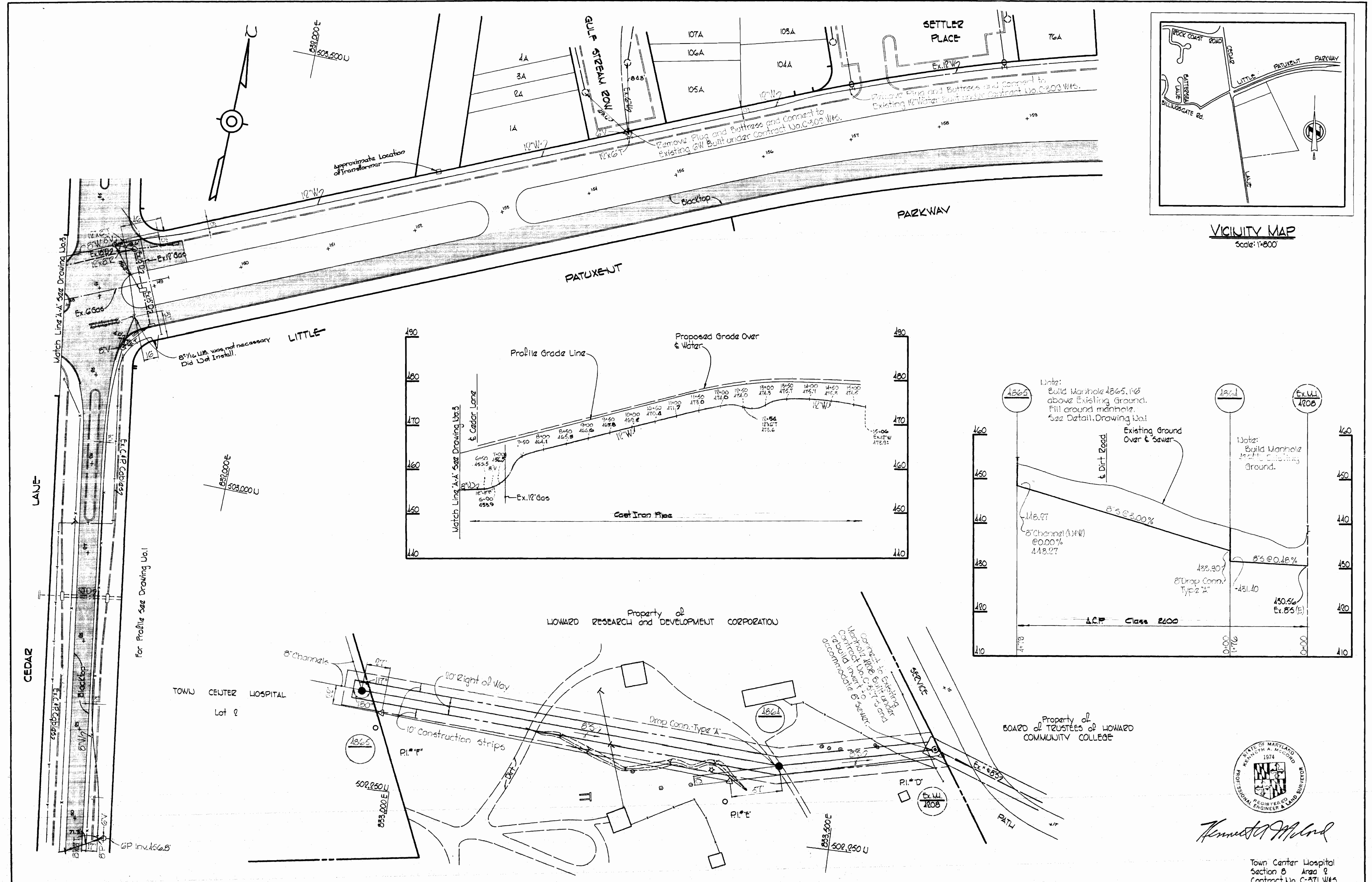
Lynx Lane Section 4 Area 2 Contract No. C-371 W&S

WHITMAN, REQUARDT & ASSOCIATES ENGINEERS 1304 ST. PAUL ST. BALTIMORE, MARYLAND	DEPARTMENT OF PUBLIC WORKS HOWARD COUNTY, MARYLAND 5-27-70 <i>W. O. Fellows</i> CHIEF, BUREAU OF WATER AND SEWER	CONTRACT NO. C-371 W&S	PLAN AND PROFILE OF WATER & SEWER MAINS	COLUMBIA VILLAGE OF WILDE LAKE ELECTION DISTRICT CLARKSVILLE No. 5	DRAWING NO. 1 OF 4	SCALE AS SHOWN	201-170 206-178
					W. O. 6075-2		

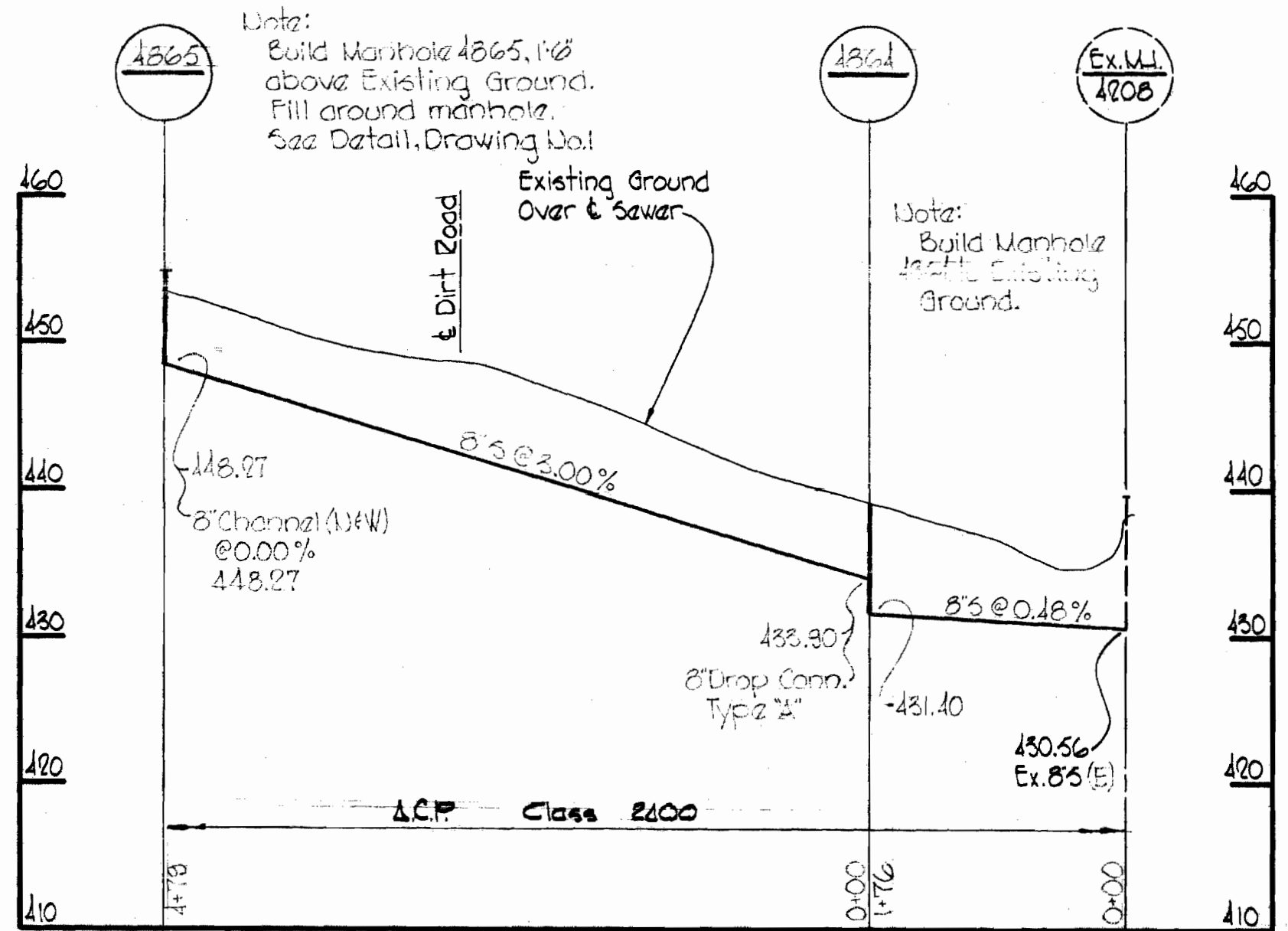
WS 371-W4S/2

Suspension

Suspension

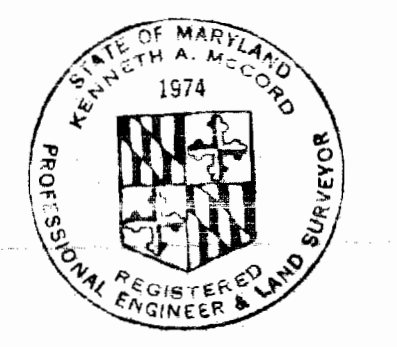


VICINITY MAP
Scale: 1"=800'



Property of
HOWARD RESEARCH and DEVELOPMENT CORPORATION

Property of
BOARD of TRUSTEES of HOWARD
COMMUNITY COLLEGE

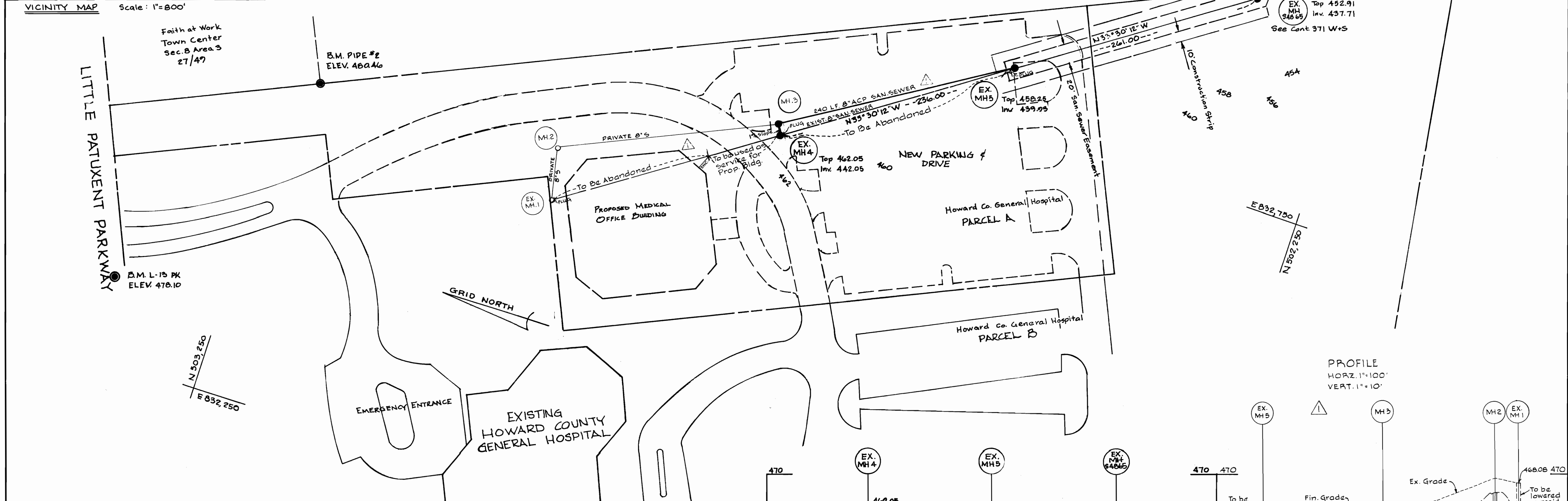
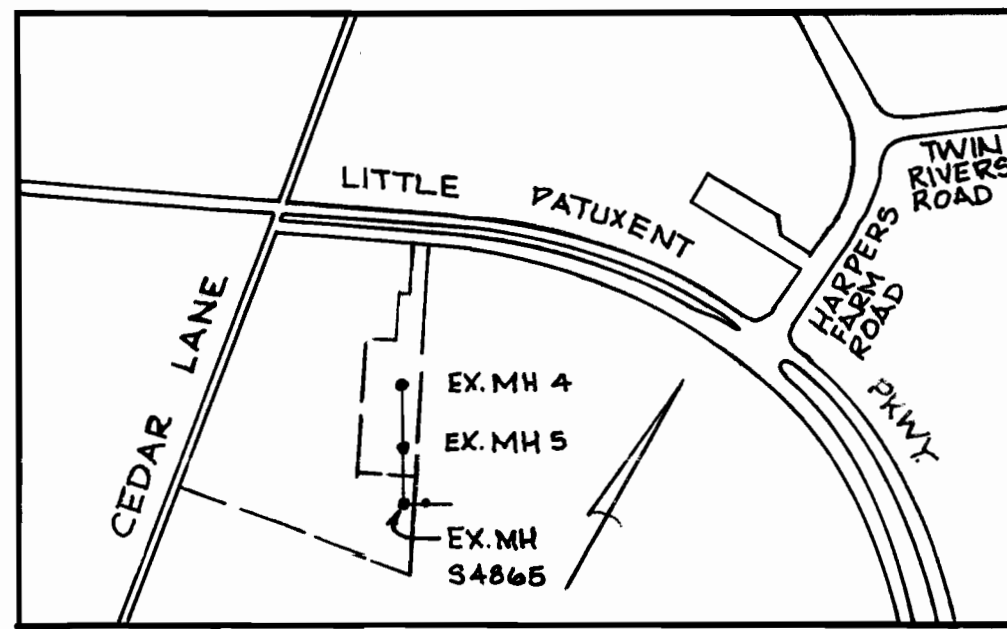


Kenneth A. McLeod

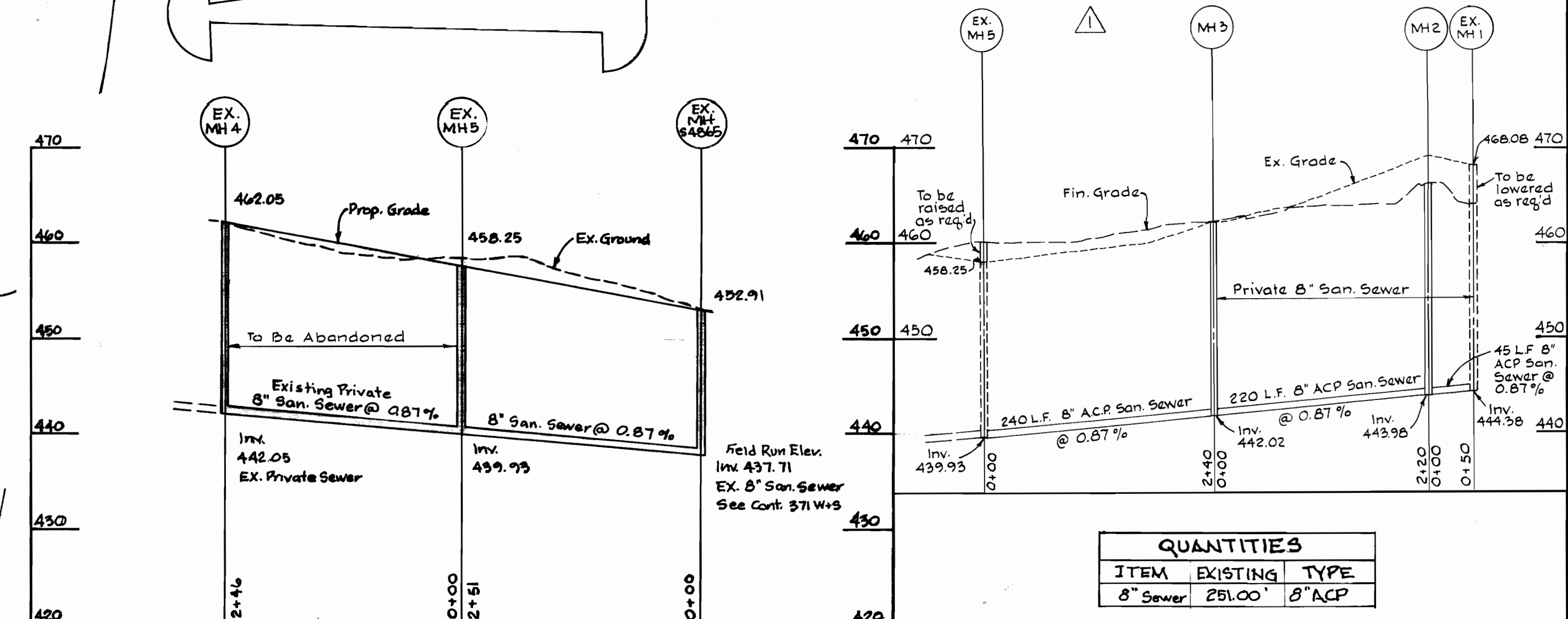
Town Center Hospital
Section B Area 2
Contract No. C-371 W4S

<p>WHITMAN, REQUARDT & ASSOCIATES ENGINEERS 1304 ST. PAUL ST. BALTIMORE, MARYLAND</p>	<p>DEPARTMENT OF PUBLIC WORKS HOWARD COUNTY, MARYLAND 5-27-70 DATE <i>W. O. Fellert</i> CHIEF - BUREAU OF WATER AND SEWER</p>	<p>CONTRACT NO. C-371 W4S</p>	<p>PLAN AND PROFILE OF WATER & SEWER MAINS</p>	<p>TOWN COLUMBIA TOWN CENTER HOSPITAL ELECTION DISTRICT CLARKVILLE No.5</p>	<p>DRAWING NO. 2 OF 4 SCALE AS SHOWN</p>
---	---	-------------------------------	--	---	--

No.	Date	Revision
△	6-1-1977	Add 8" S.W. 5 to MH 5. Also Private 8" S from MH 2 to MH 2 to Ex. MH 1.
△	6-1-1977	Abandon 8" S by MH 5 to Ex. MH 4 & Part of Ex. MH 4 to Ex. MH 1.
△	6-1-1977	Add Profile for 2" x 8" S



PROFILE
 HORZ. 1"=100'
 VERT. 1"=10'



QUANTITIES		
ITEM	EXISTING	TYPE
8" Sewer	251.00'	8" ACP

NOTE:
 ALL HORIZONTAL AND VERTICAL CONTROLS ARE BASED ON MARYLAND STATE DATUM OR HOWARD COUNTY DATUM.



Richard P. Browne
 Richard P. Browne # 5238

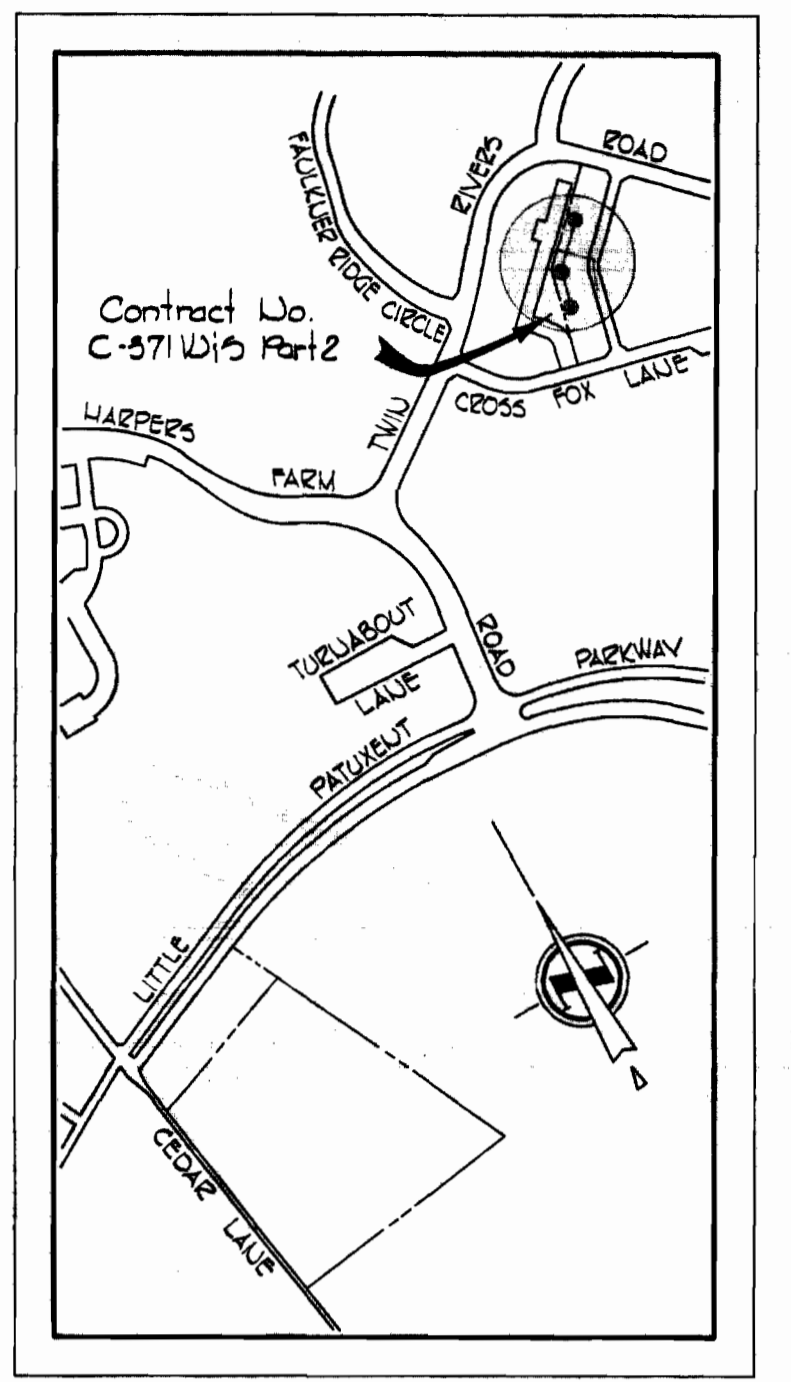
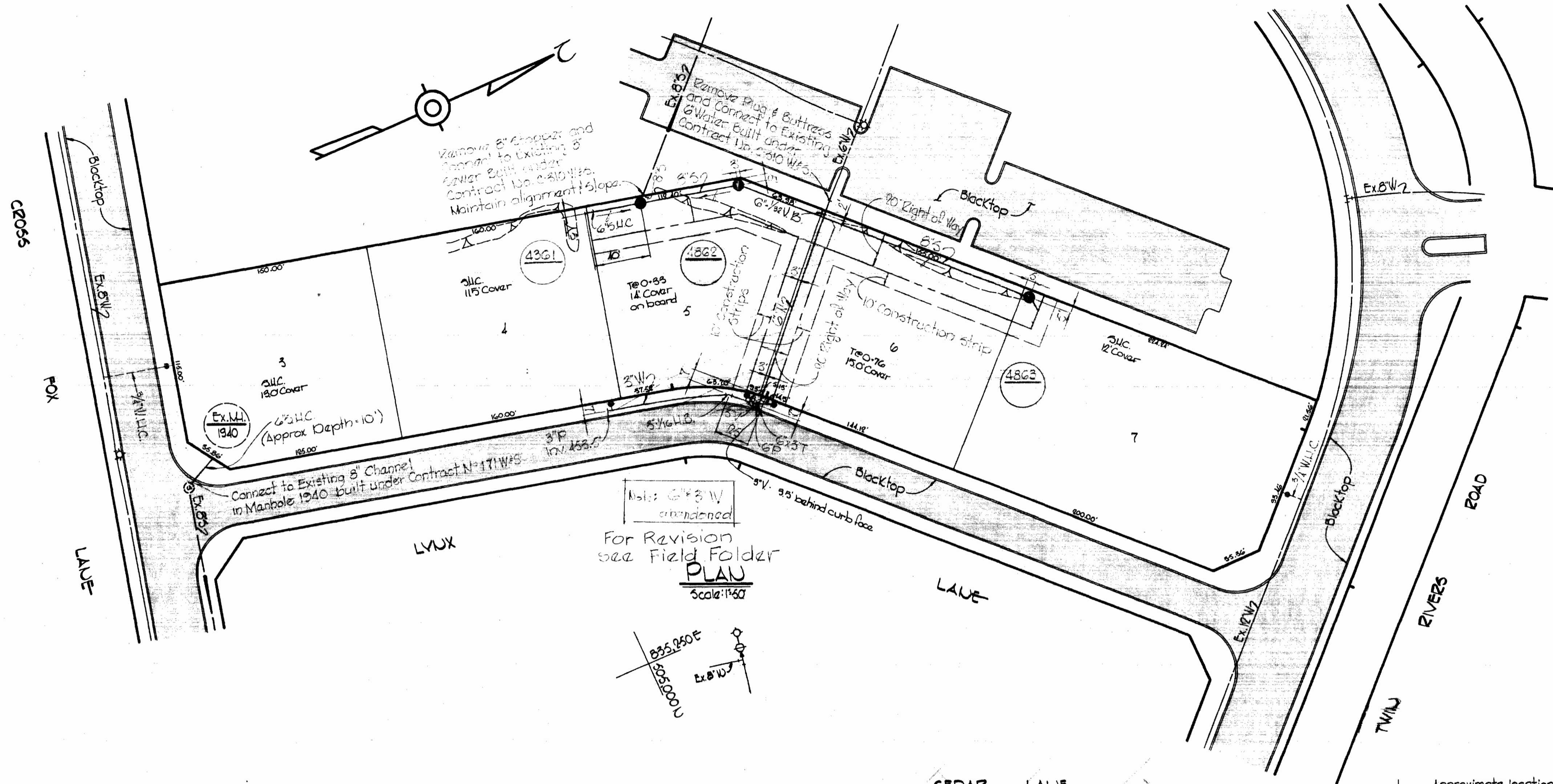
RICHARD P. BROWNE ASSOCIATES ENGINEERS SURVEYORS PLANNERS ARCHITECTS COLUMBIA, MD. PEACHTREE CITY, GA. WAYNE, N. J.	HOWARD COUNTY DEPARTMENT OF PUBLIC WORKS <i>P. J. Brady</i> 3-11-77 <i>W. O. Felbert</i> 3-11-77 DIRECTOR OF PUBLIC WORKS - Date CHIEF BUREAU OF ENGINEERING - Date	CONTRACT NO. 371-S	PLAN and PROFILE of SEWER MAINS	HOWARD COUNTY GENERAL HOSPITAL TOWN CENTER SECTION 8 AREA 2 5th ELECTION DISTRICT HOWARD COUNTY, MARYLAND	DRAWING NO. 4 OF 4	SCALE as shown	DES: DRWN: MK CHK: DATE: 2-10-77
	AS-BUILT : 2-10-77						

WS 371-WM-12C SM

SUSPENSE

SUSPENSE

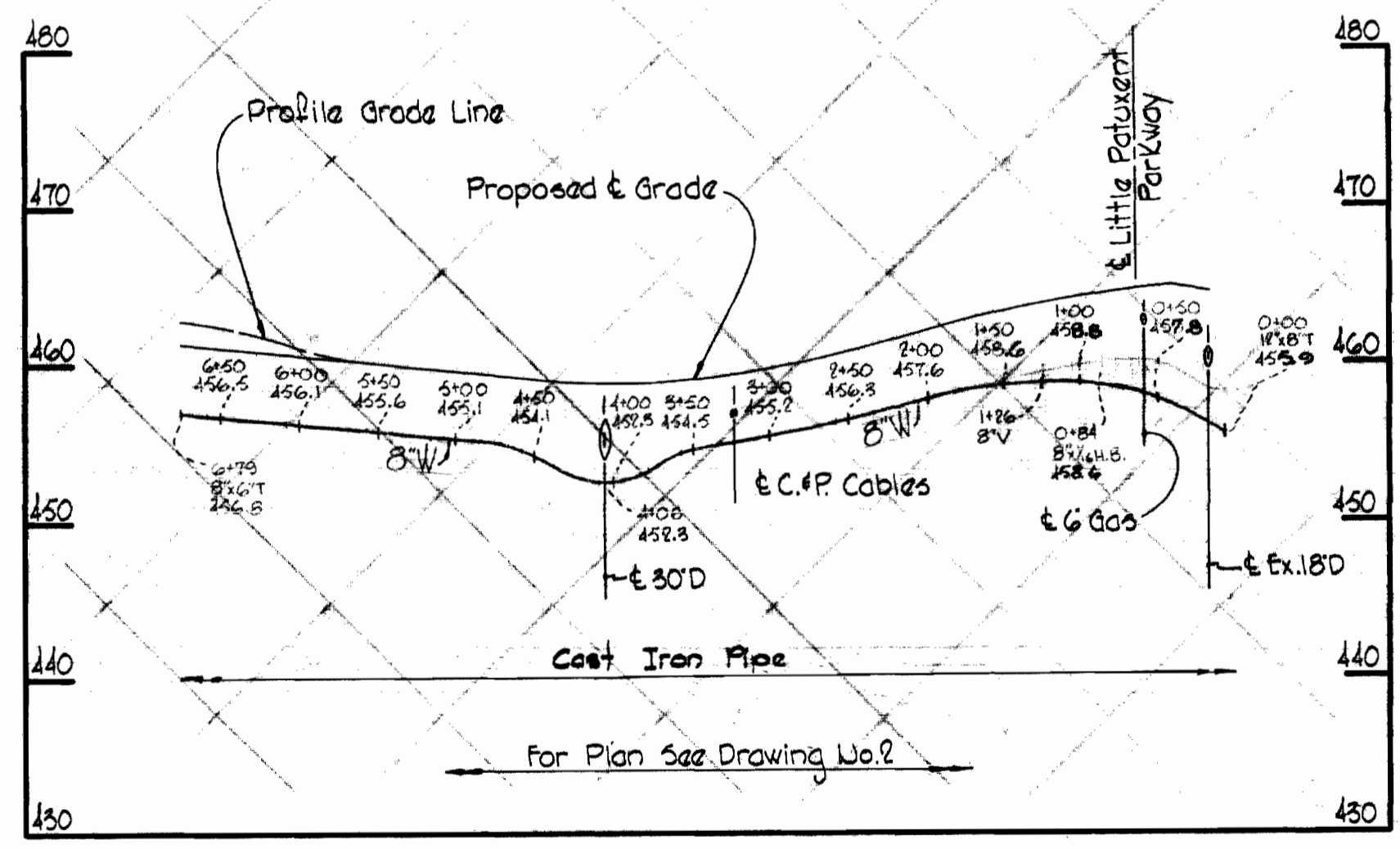
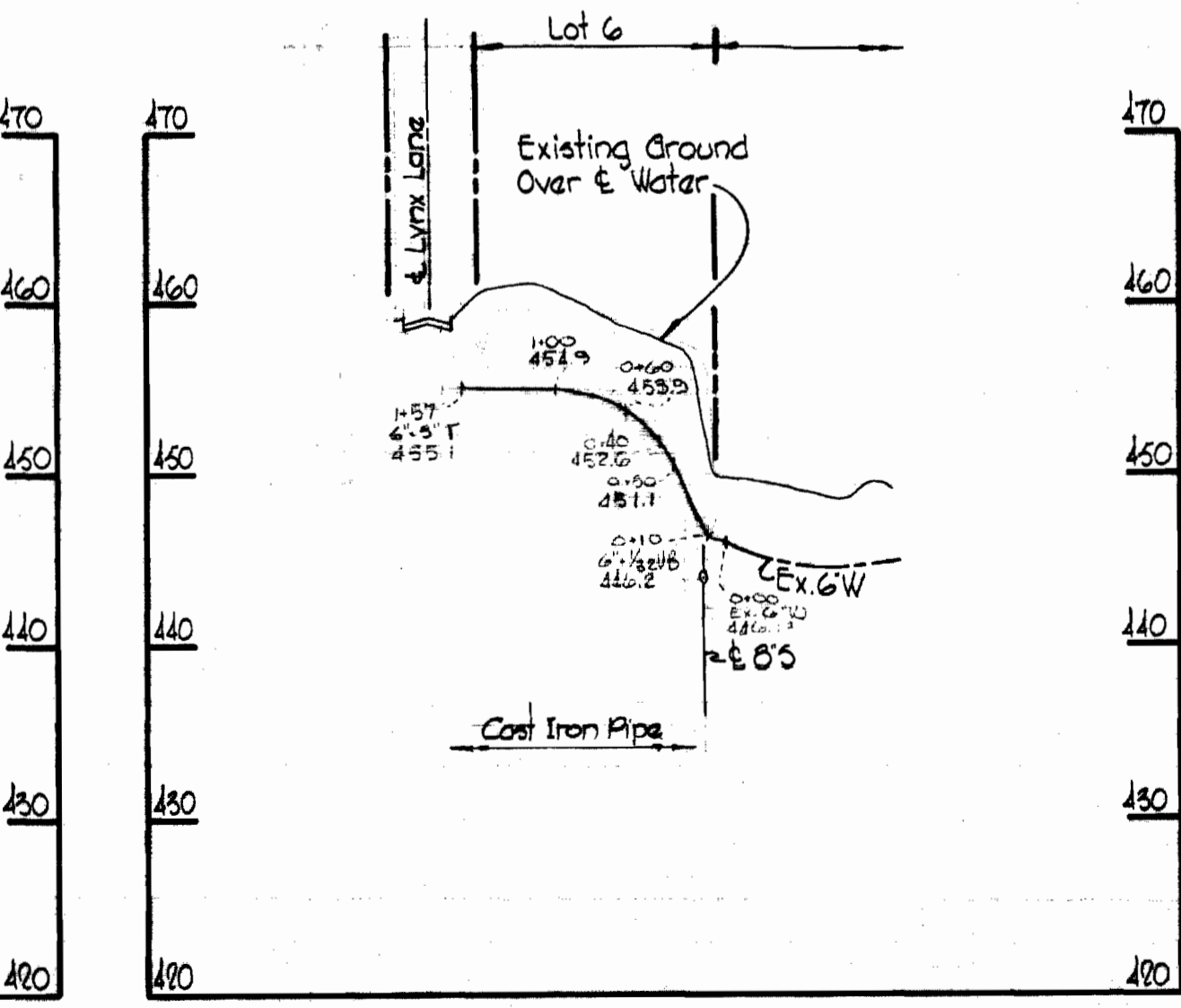
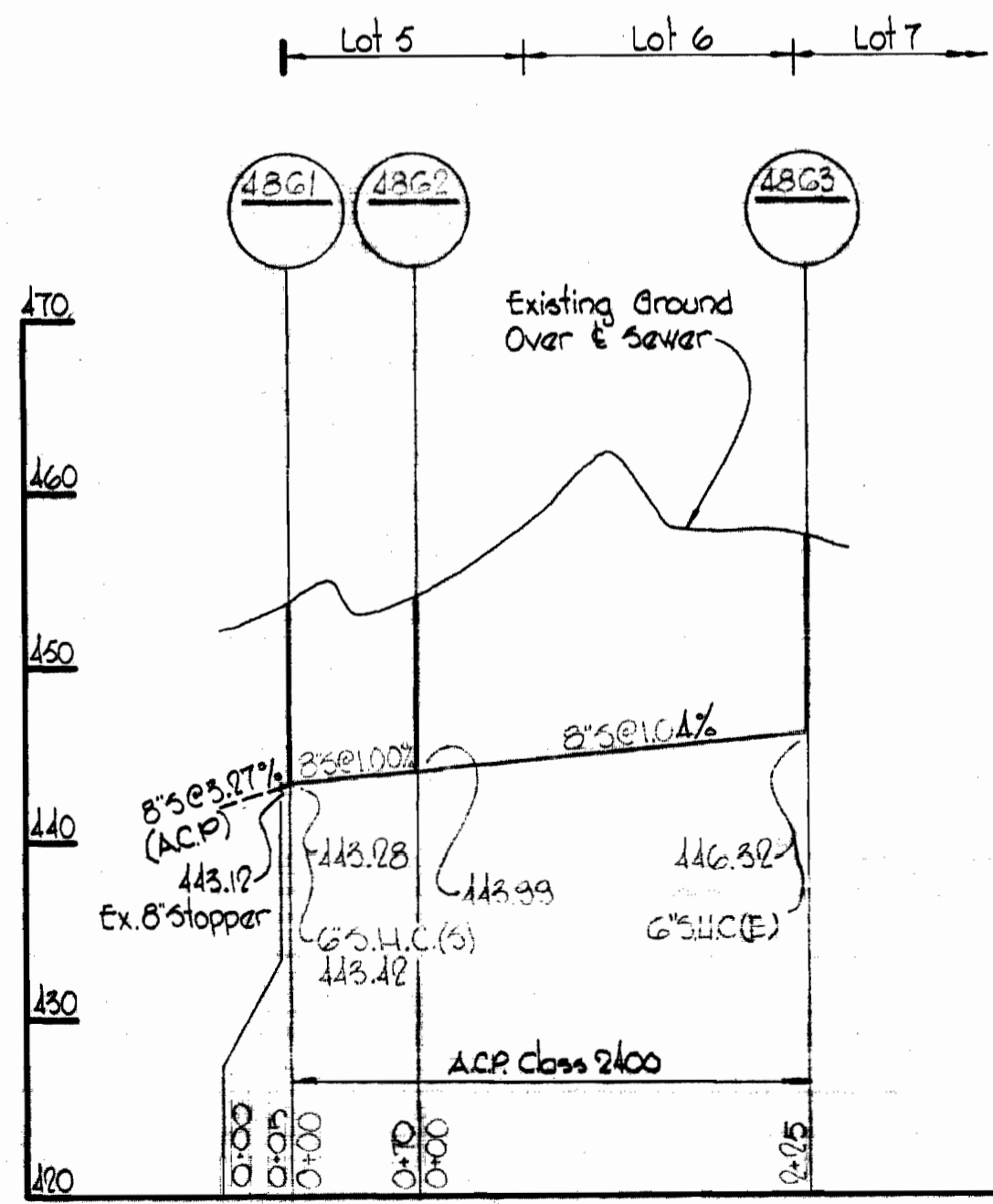
SUSPENSE



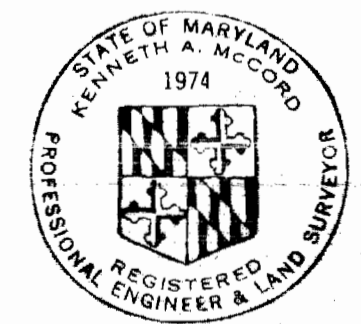
QUANTITIES	
8" Sewer	300'
3" Water	110'
6" Water	160'

GENERAL NOTES

1. Approximate location of existing mains are shown. The Contractor shall take all necessary precautions to protect existing mains and services and maintain uninterrupted supply. Any damage incurred shall be repaired immediately.
2. All pipe elevations shown are invert elevations.
3. The Contractor shall locate existing utilities a minimum of two weeks in advance of construction operations in vicinity of utilities.
4. For all standard details see standards bound in Specifications.
5. All horizontal and vertical controls are based on Maryland State Datum.
6. Clear all utilities by a minimum of 6'. Clear all poles by a minimum of 2' or tunnel as required.
7. All water mains are to have a minimum of 3 1/2' cover.
8. Block all fittings with concrete, see standards bound in Specifications.
9. Bury Line elevations on fire hydrants shall be set to elevations shown on drawings or as directed by the Engineer in the field.
10. All fire hydrants shall be strapped and buttressed in accordance with Standard Details.
11. Cost of strapping fire hydrants and valves to tees to be included in unit price bid for furnishing and laying of water mains.
12. The Contractor shall provide a joint in all sewer mains within 2' of exterior manhole walls.
13. All manholes shall be 4'-0" inside diameter.



NOT INCLUDED IN THIS CONTRACT.

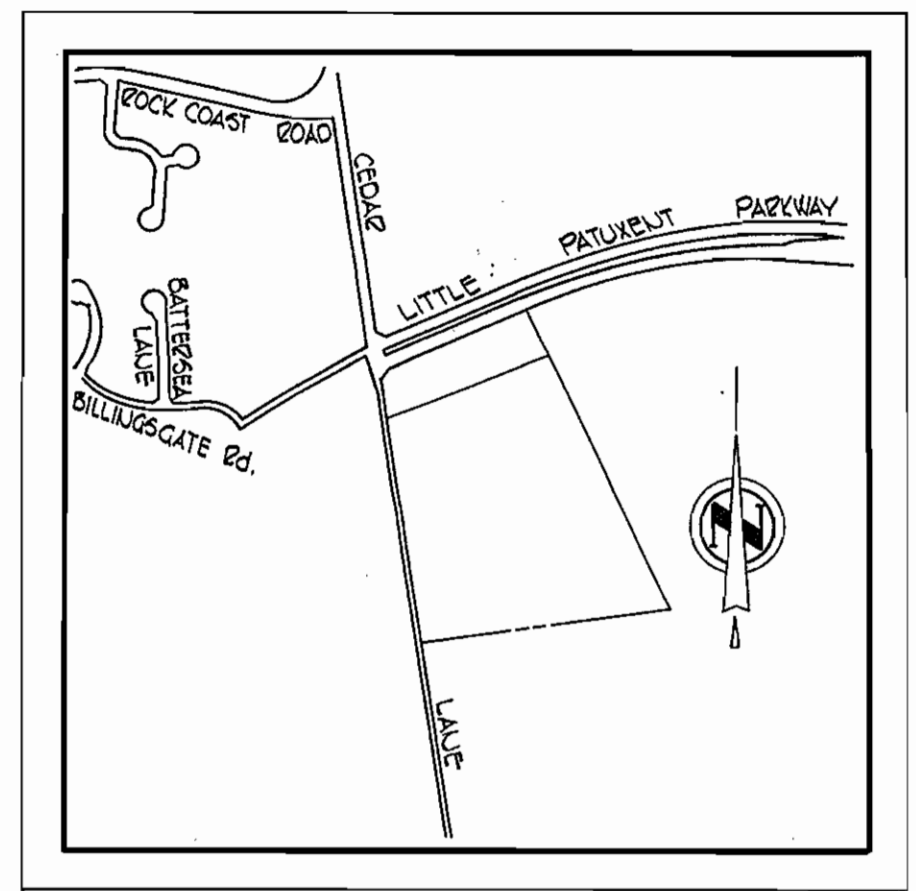


Kenneth A. McCord

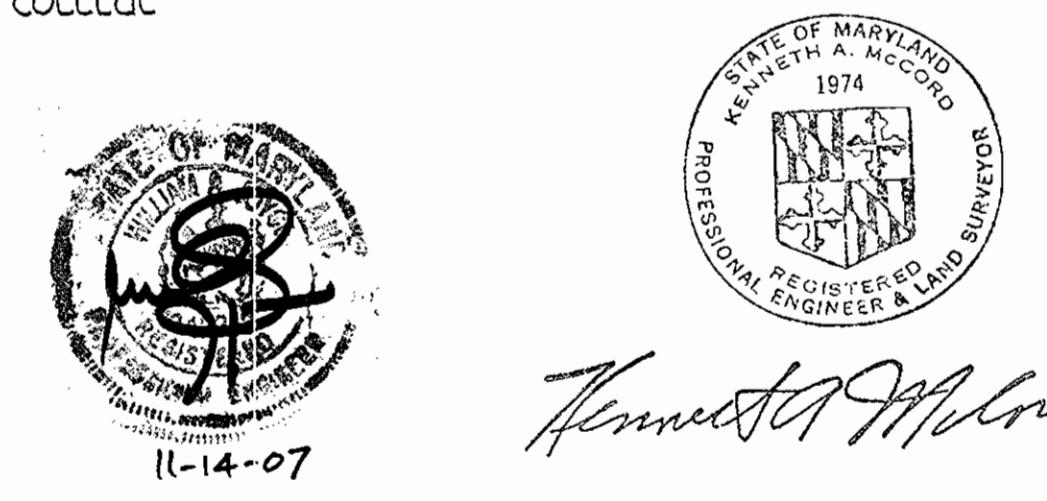
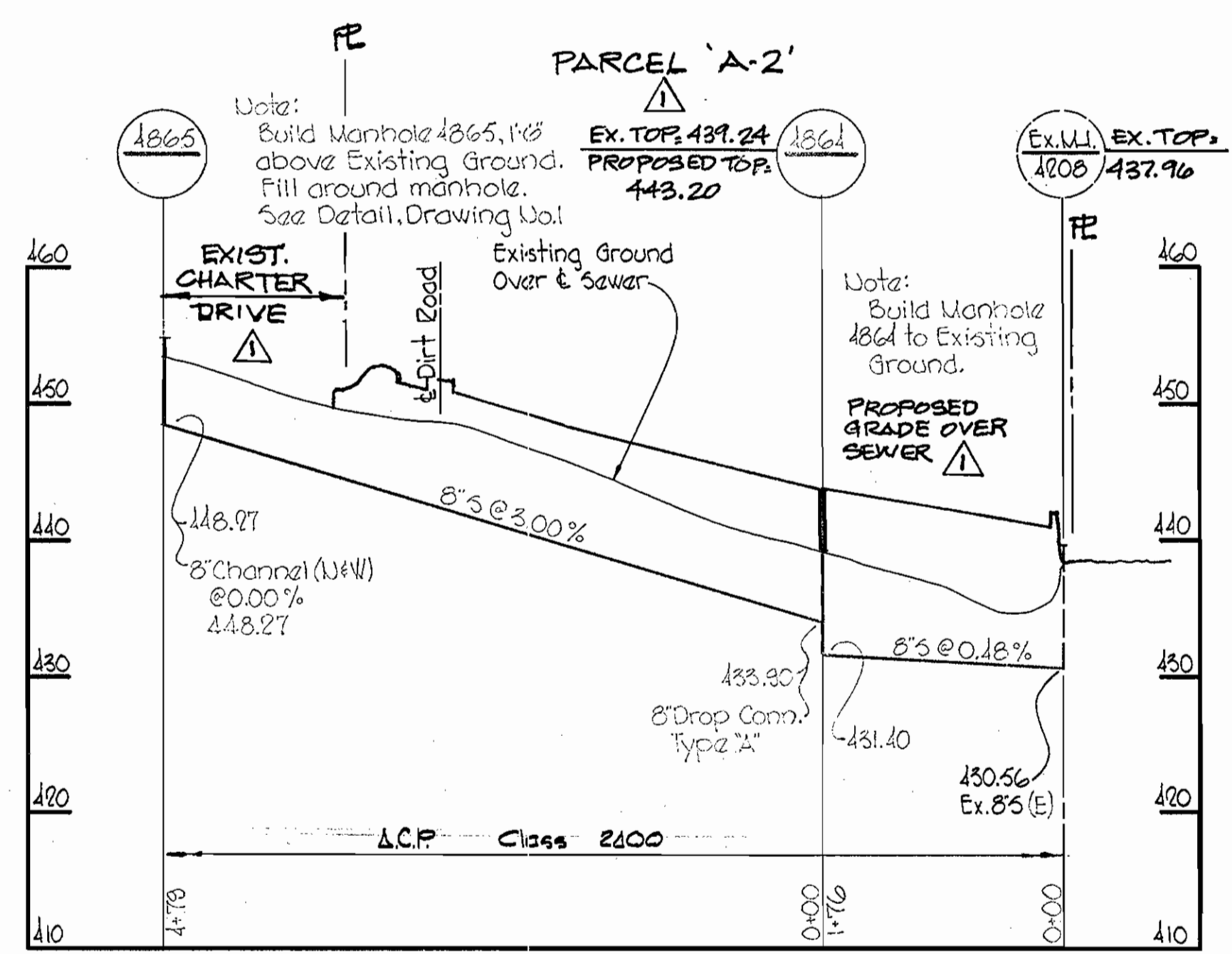
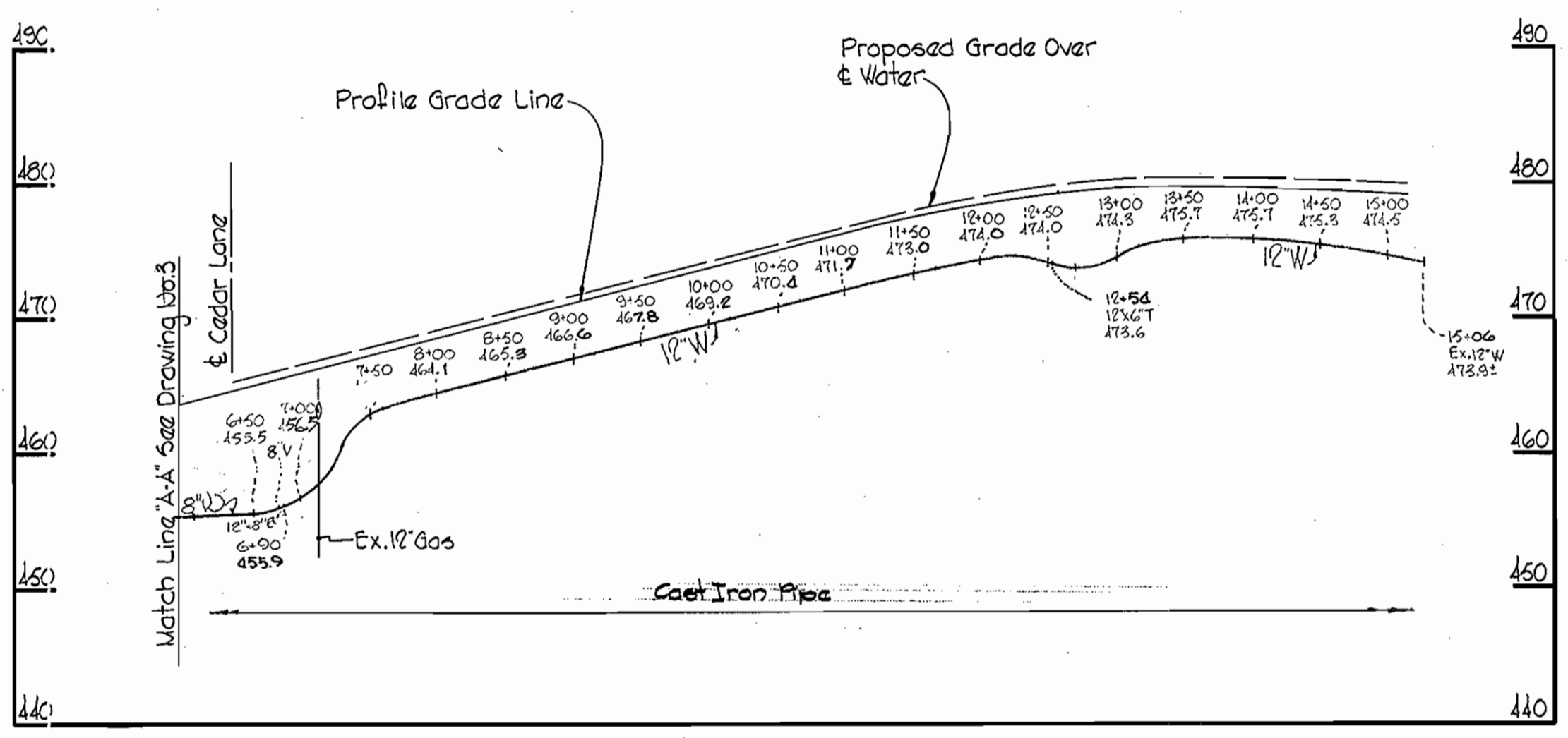
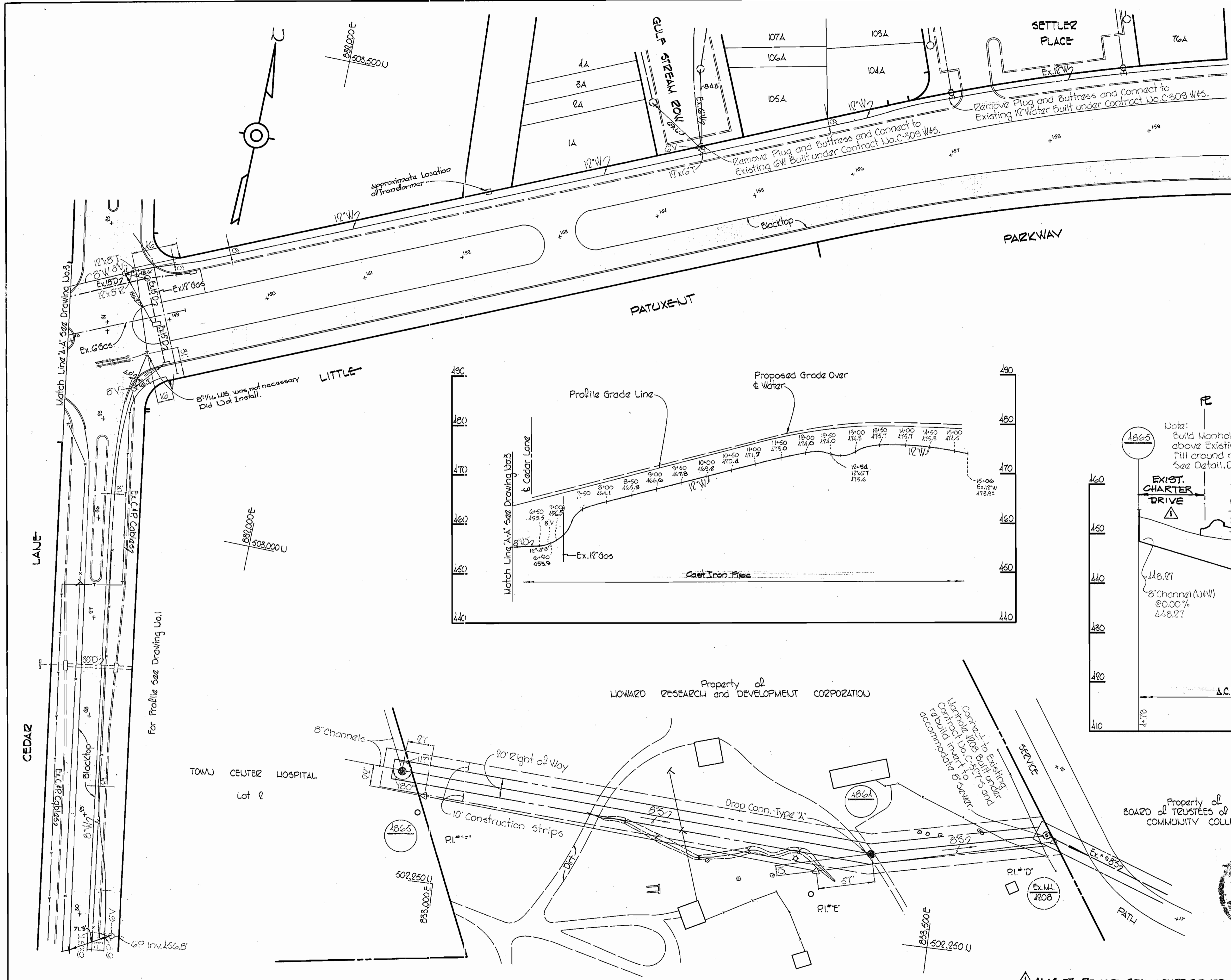
Standard Diary FR 4951

Village of Wilde Lake
Section 4, Area 2
Contract No. C-371W-5 Part 2

WHITMAN, REQUARDT & ASSOCIATES ENGINEERS 1304 ST. PAUL ST. BALTIMORE, MARYLAND	DEPARTMENT OF PUBLIC WORKS HOWARD COUNTY, MARYLAND 5-27-70 DATE	CONTRACT NO. C-371W-5 PART-2	PLAN AND PROFILE OF WATER & SEWER MAINS	COLUMBIA VILLAGE OF WILDE LAKE ELECTION DISTRICT CLARKSVILLE No. 5	DRAWING NO. 1 OF 1	SCALE AS SHOWN	504-178
							505-178



VICINITY MAP
Scale: 1"=800'



11-14-07: REVISED GRADE OVER SEWER, ADJUST MH TOP 4864 PER SDDP7-138, Contract No. C-371 W&S

WHITMAN, REQUARDT & ASSOCIATES ENGINEERS 1304 ST. PAUL ST. BALTIMORE, MARYLAND	DEPARTMENT OF PUBLIC WORKS HOWARD COUNTY, MARYLAND J-27-70 DATE	CONTRACT NO. C-371 W&S CHIEF - BUREAU OF WATER AND SEWER	PLAN AND PROFILE OF WATER & SEWER MAINS	COLUMBIA TOWN CENTER HOSPITAL ELECTION DISTRICT CLARKSVILLE No. 5	DRAWING NO. 2 OF 4 SCALE AS SHOWN	502-476 502-476 502-477
---	--	---	--	---	---	-------------------------------

W. O. 6023

APRIL 1, 1971 P. 8, #451