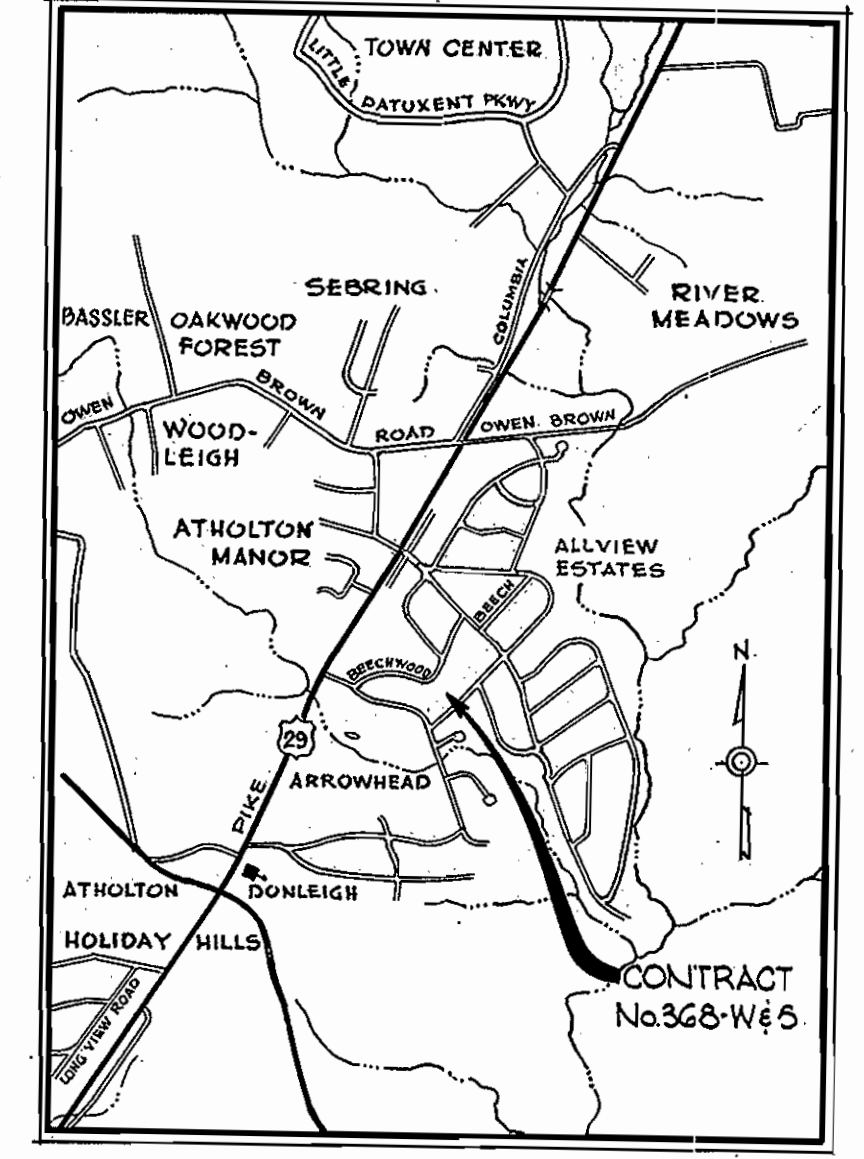
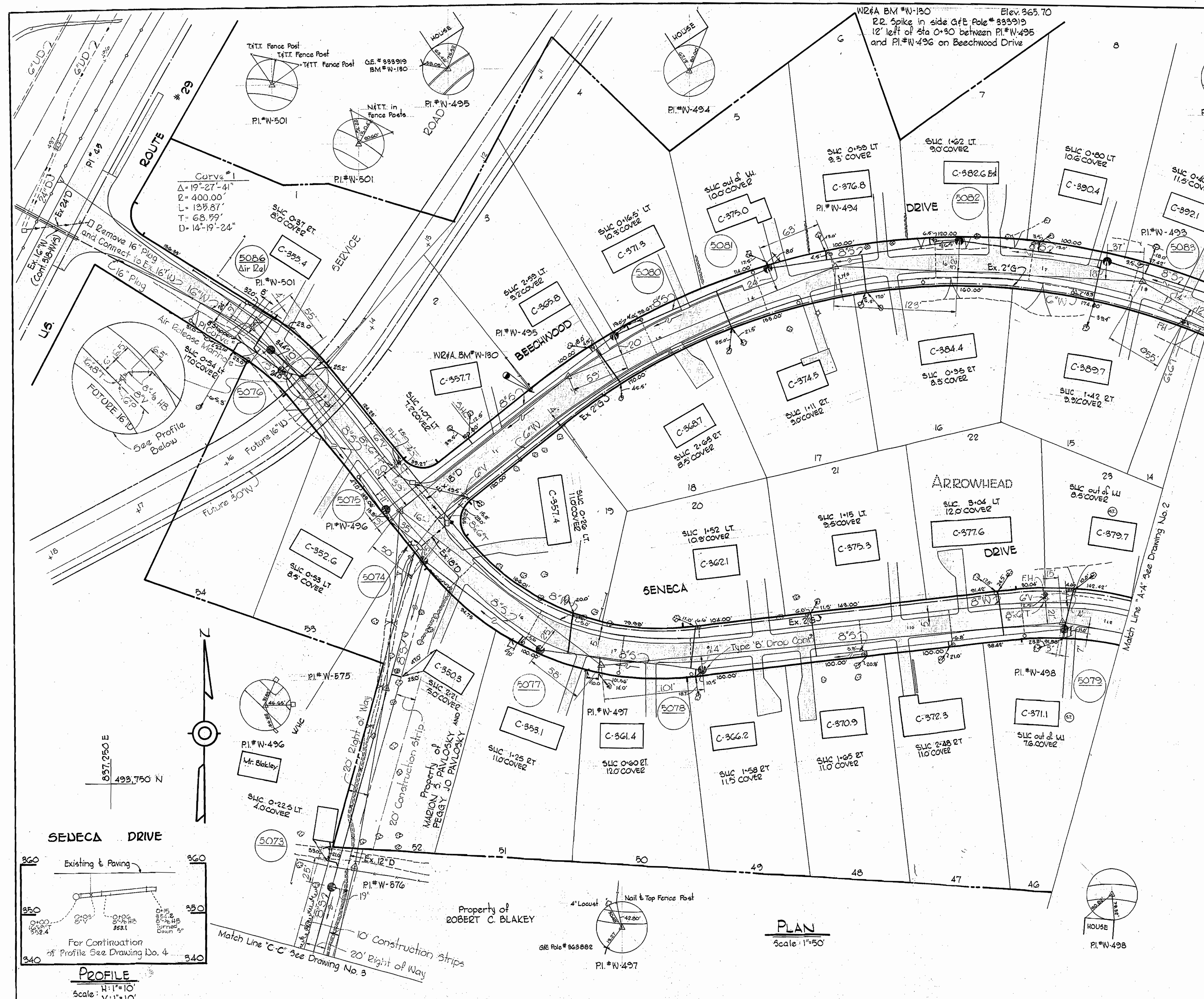


WS 368-W&S/1

SUSPENSE

SUSPENSE

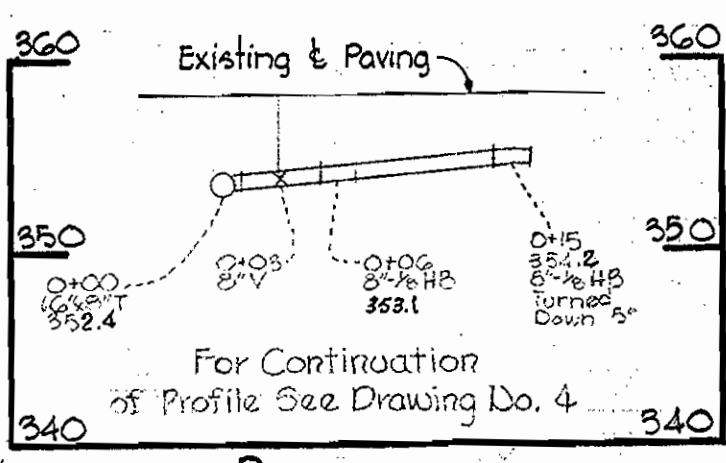


**VICINITY MAP**  
Scale: 1" = 1/2 Mile

**GENERAL NOTES**

1. Approximate location of existing mains are shown. The Contractor shall take all necessary precautions to protect existing mains and services and maintain uninterrupted supply. Any damage incurred shall be repaired immediately.
2. All pipe elevations shown are invert elevations.
3. The Contractor shall locate existing utilities a minimum of two weeks in advance of construction operations in vicinity of utilities.
4. For all standard details, see standards bound in Specifications.
5. All water mains shall have a minimum of 3 1/2' cover.
6. Block all fittings with concrete, see standards bound in Specifications.
7. Bury Line elevations on fire hydrants shall be set to the elevations shown on the drawings or as directed by the engineer in the field.
8. All fire hydrants shall be strapped and buttressed in accordance with standard details.
9. Cost of strapping fire hydrants and valves to trees to be included in unit price bid for furnishing and installing fire hydrants.
10. Clear all utilities by a minimum of 6', clear all poles by a minimum of 2'-0" or tunnel, as required.
11. The Contractor shall provide a joint in all sewer mains within 2'-0" of exterior manhole walls (including manholes to be built by others.)
12. All manholes shall be 4'-0" inside diameter.
13. Profile stations shall be adjusted to conform with plan dimensions.
14. All horizontal and vertical controls are in Maryland State Datum.

Diary FB# 5122, 5176  
Stakeout FB# 5124



**PROFILE**  
Scale: 1" = 10'

**PLAN**  
Scale: 1" = 50'

**WHITMAN, REARD & ASSOCIATES**  
ENGINEERS  
1304 ST. PAUL ST.  
BALTIMORE, MARYLAND

**DEPARTMENT OF PUBLIC WORKS**  
HOWARD COUNTY, MARYLAND  
7-28-70  
DATE

**CONTRACT NO. 368 W&S**

**PLAN OF WATER & SEWER MAINS**

**ELECTION DISTRICT GUILFORD NO. 6**

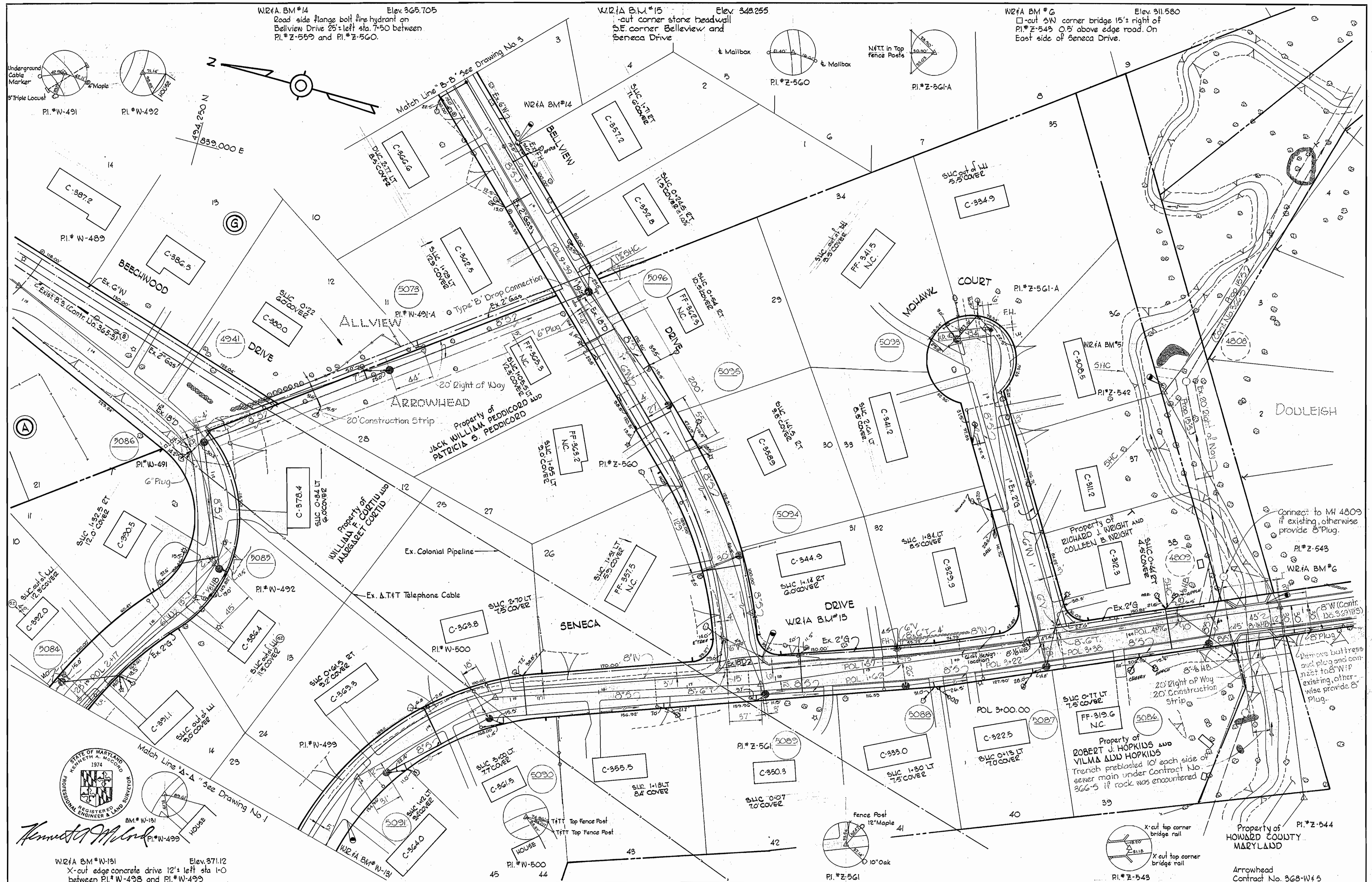
**DRAWING NO. 4 OF 4**  
**SCALE 1" = 50'**



*Kenneth M. Melrod*  
Arrowhead  
Contract No. 368-W&S

FB# 4624, 4630, 4614  
Nov. 13, 1972

WS 368-W#5/2



WHITMAN, REQUARDT & ASSOCIATES  
 ENGINEERS  
 1304 ST. PAUL ST.  
 BALTIMORE, MARYLAND

DEPARTMENT OF PUBLIC WORKS  
 HOWARD COUNTY, MARYLAND  
 7-28-70  
 DATE

CONTRACT NO. 368 W#5

PLAN OF  
 WATER & SEWER MAINS

ELECTION DISTRICT  
 GUILFORD NO. 6

DRAWING  
 NO. 2  
 OF 4  
 SCALE  
 1" = 50'

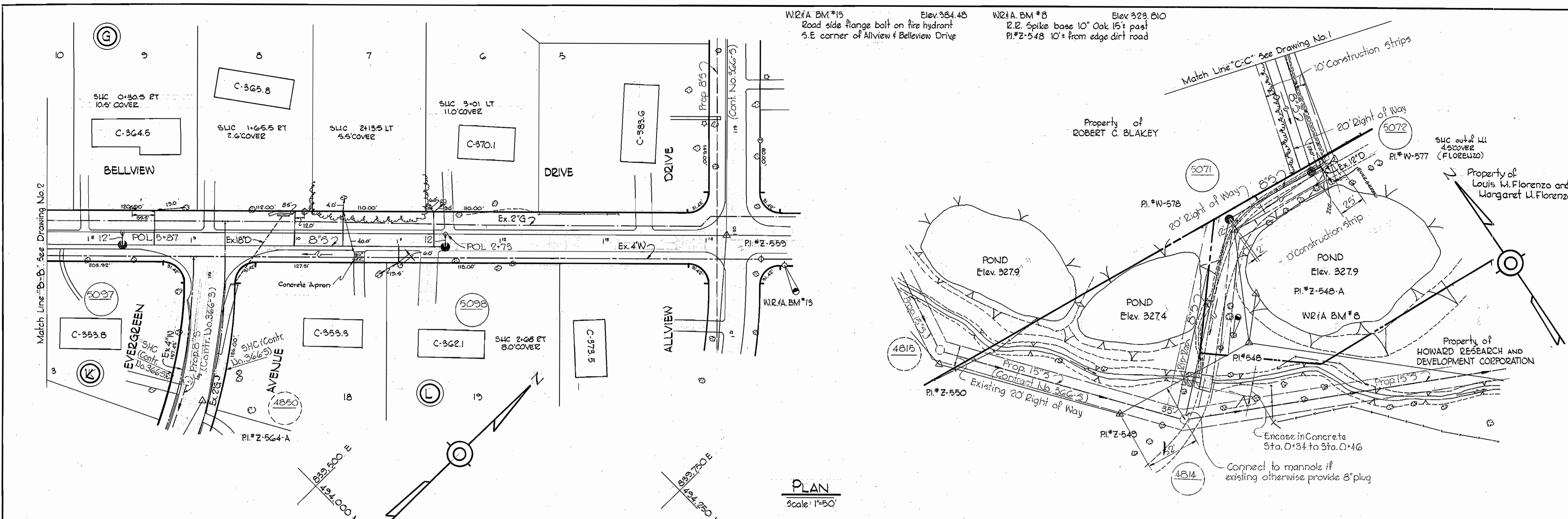
FB# 4624, 4630, 4607  
 4612, 4637, 4622  
 AS BUILT  
 Nov 13, 1972

W. O. G185-2

WS 368-W&S/3

SUPERSEDED

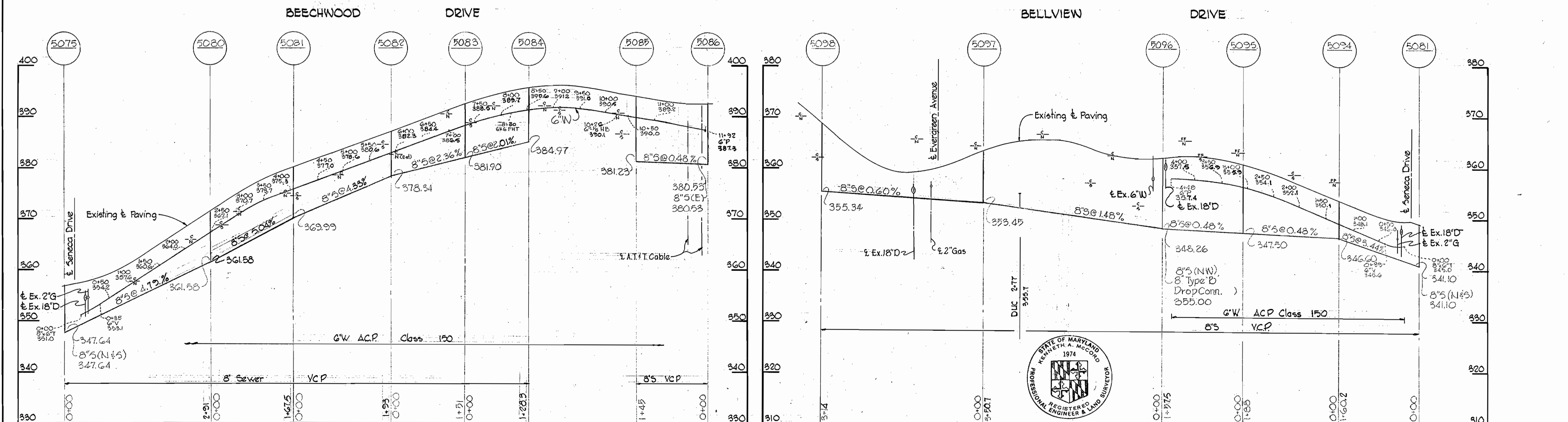
SUPERSEDED



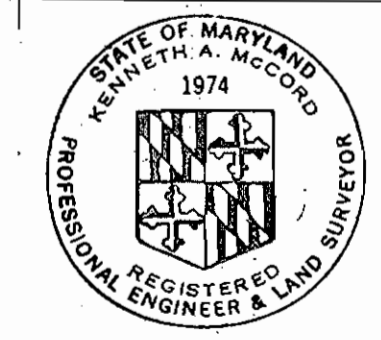
W2&A BM #13 Elev 384.48  
Road side flange bolt on fire hydrant  
S.E. corner of Allview & Bellview Drive

W2&A BM #8 Elev 323.810  
2.12. Spike base 10" Oak 15' post  
P.I.#Z-548 10'± from edge dirt road

**PLAN**  
Scale: 1"=50'



**PROFILE**  
Scale: H: 1"=100'  
V: 1"=10'

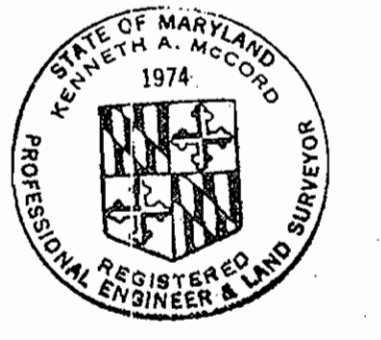
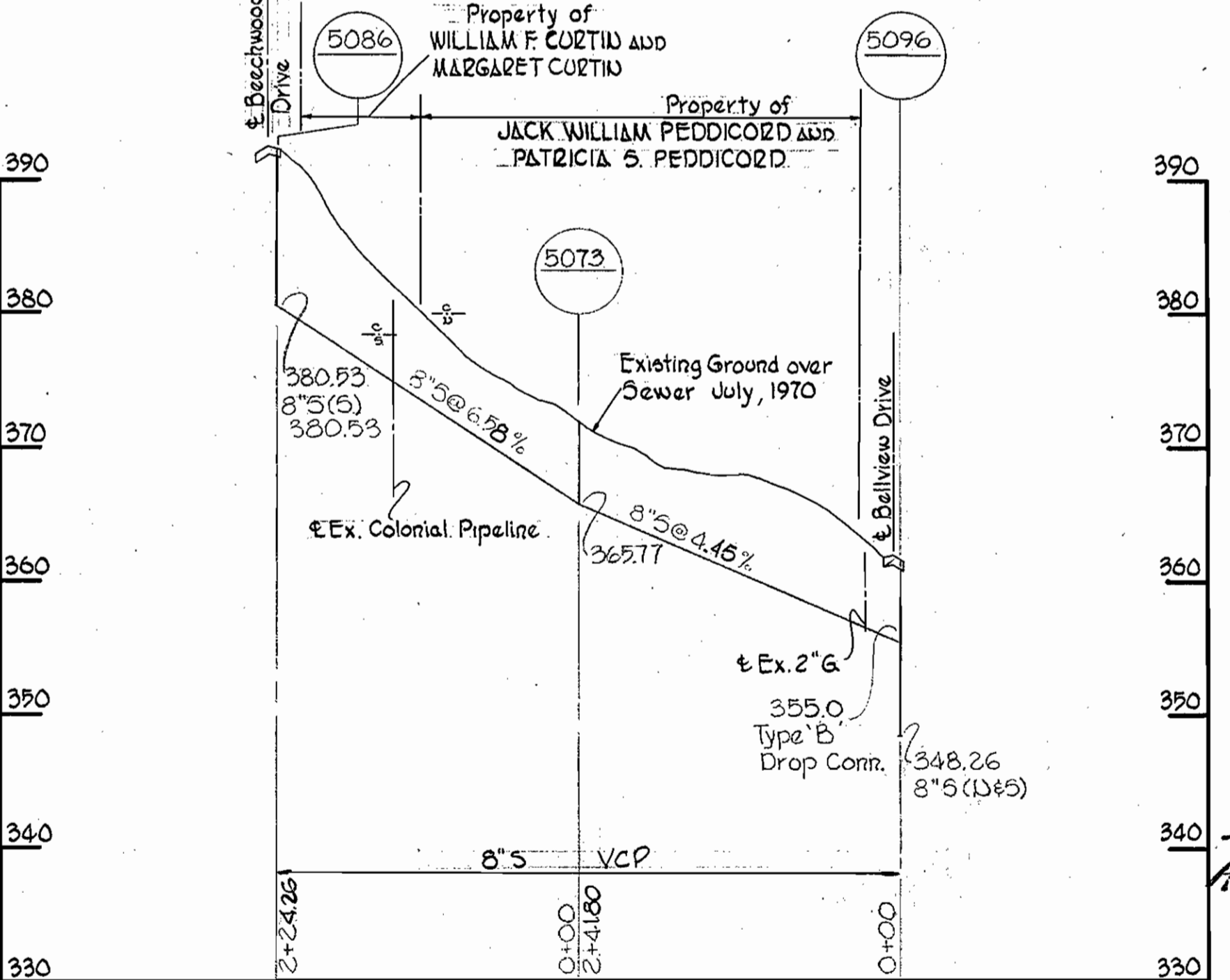
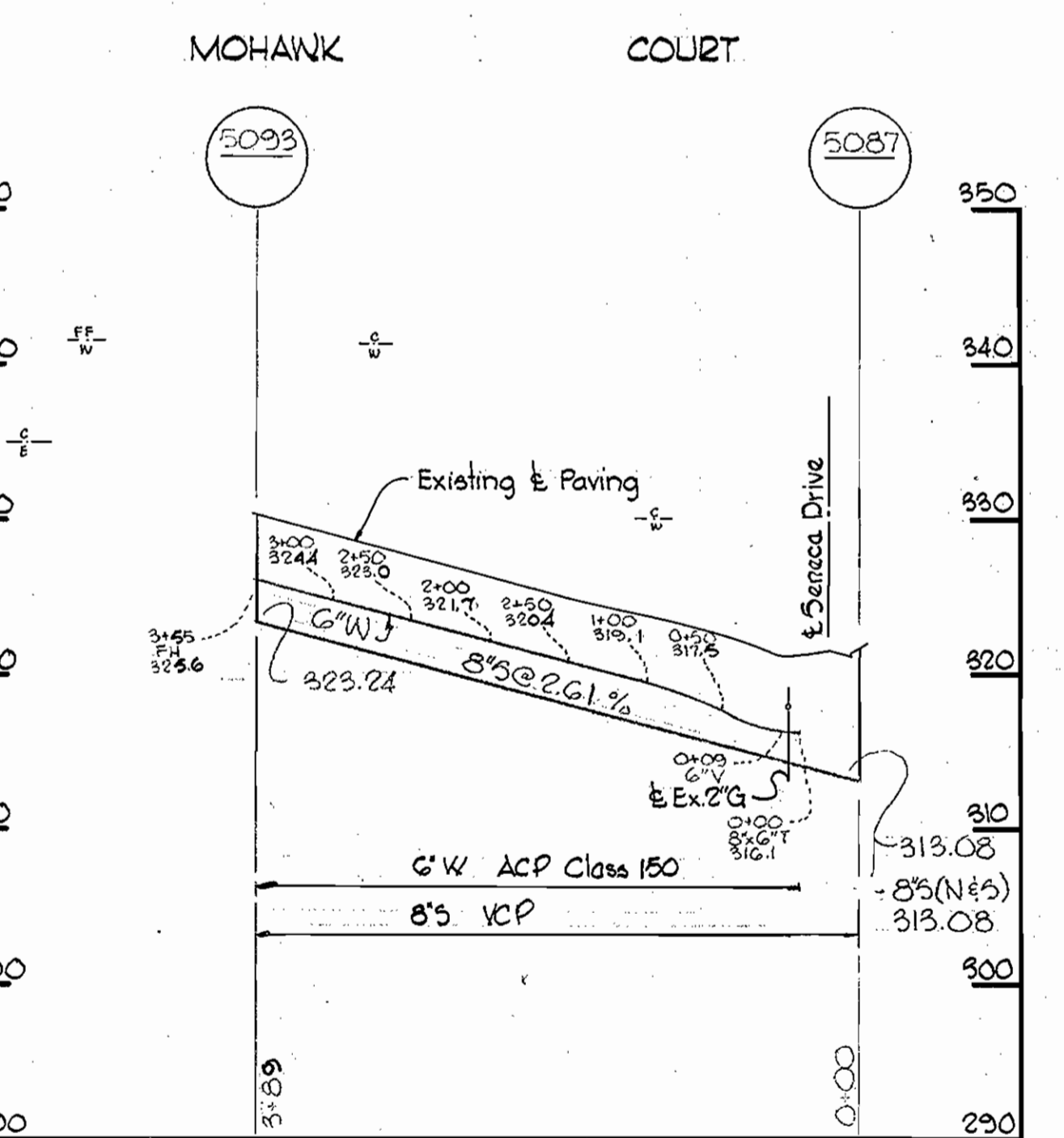
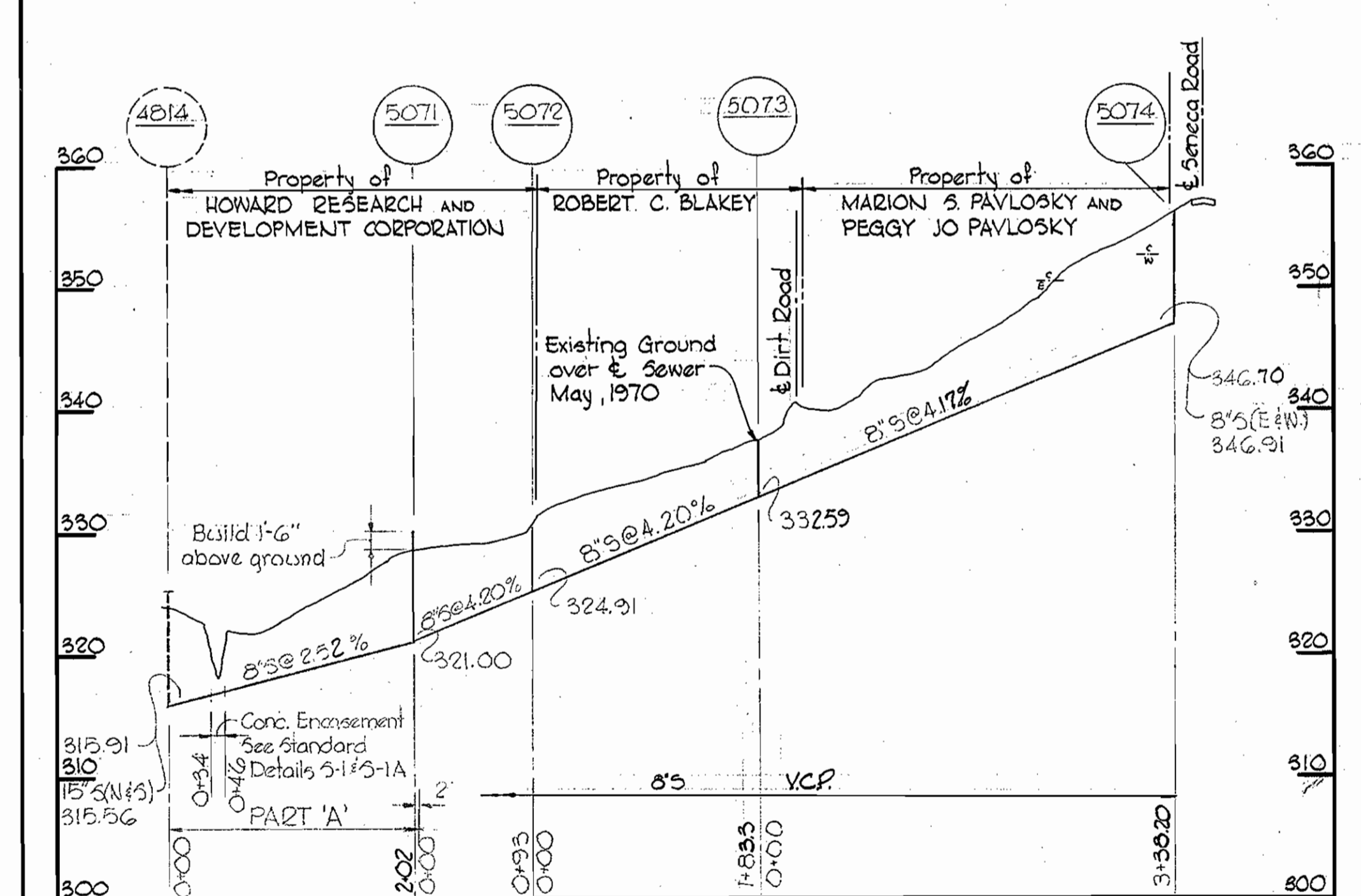
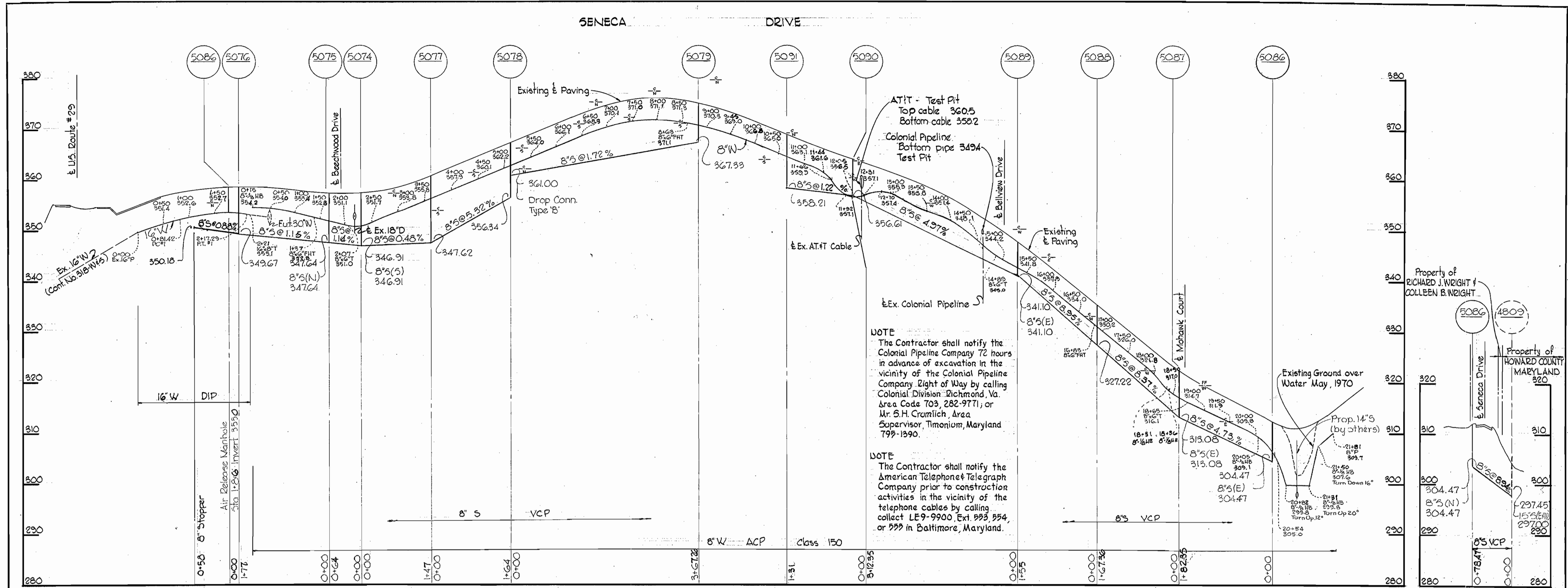


<b>WHITMAN, REQUARDT &amp; ASSOCIATES</b> ENGINEERS 1304 ST. PAUL ST. BALTIMORE, MARYLAND	<b>DEPARTMENT OF PUBLIC WORKS</b> HOWARD COUNTY, MARYLAND DATE: 7-28-70 <i>W O Pullert</i> CHIEF-BUREAU OF WATER AND SEWER	<b>CONTRACT NO. 368-W&amp;S</b>	<b>PLAN AND PROFILE OF</b> <b>WATER &amp; SEWER MAINS</b>	<b>ELECTION DISTRICT</b> <b>GUILFORD NO. 6</b>	<b>DRAWING NO. 3 OF 4</b> <b>SCALE AS SHOWN</b> Arrowhead Contract No. 368-W&S
--	--	---------------------------------	--	---	--

WS 368-W&S/H

SUSPENSION

SUSPENSION



*Kenneth A. McLeod*

WHITMAN, REQUARDT & ASSOCIATES ENGINEERS 1304 ST. PAUL ST. BALTIMORE, MARYLAND	DEPARTMENT OF PUBLIC WORKS HOWARD COUNTY, MARYLAND 2-28-70 DATE	CONTRACT NO. 368-W&S W O McLeod CHIEF-BUREAU OF WATER AND SEWER	PROFILES OF WATER & SEWER MAINS	ELECTION DISTRICT GUILFORD NO. 6	Arrowhead Contract No. 368-W&S
DRAWING NO. 4 OF 4	SCALE H # 100' V # 10'	DRAWING NO. 4			

Nov 13, 1972