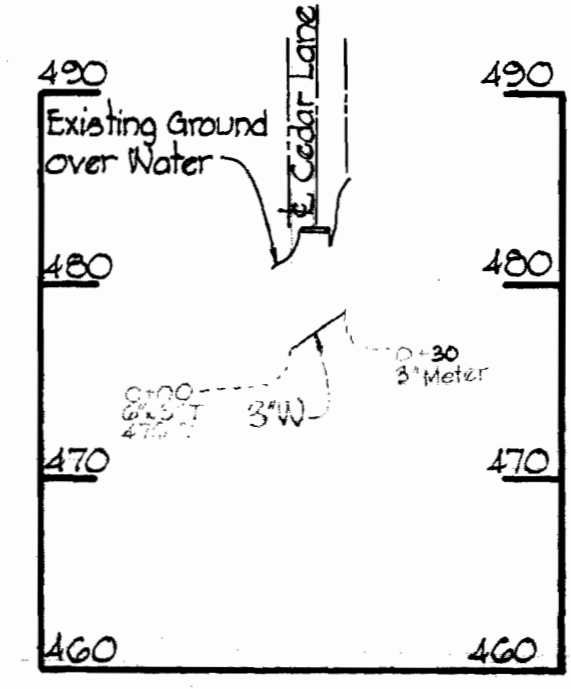


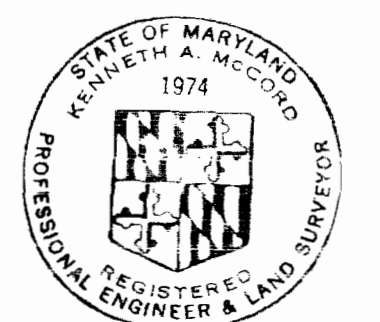
VICINITY MAP
Scale: 1"=1400'

GENERAL NOTES

1. Approximate location of existing mains are shown. The Contractor shall take all necessary precautions to protect existing mains and services and maintain uninterrupted supply. Any damage incurred shall be repaired immediately.
2. All pipe elevations shown are invert elevations.
3. The Contractor shall locate existing utilities a minimum of two weeks in advance of construction operations in vicinity of utilities.
4. For all standard details, see standards bound in Specifications.
5. All water mains to have a minimum of 3' cover.
6. Block all fittings with concrete, see standards bound in Specifications.
7. Bury Line elevations on fire hydrants shall be set to the elevations shown on the drawings.
8. All fire hydrants shall be strapped to the tee and shall be buttressed with concrete in accordance with Standard Details.
9. Clear all utilities by a minimum of 6', clear all poles by 2'-0" minimum or tunnel as required.
10. The Contractor shall provide a joint in all sewer mains within 2'-0" of exterior manhole walls.
11. All horizontal and vertical controls are based on Maryland State Datum.



PROFILE
Scale: H-1"=100'
V-1"=10'



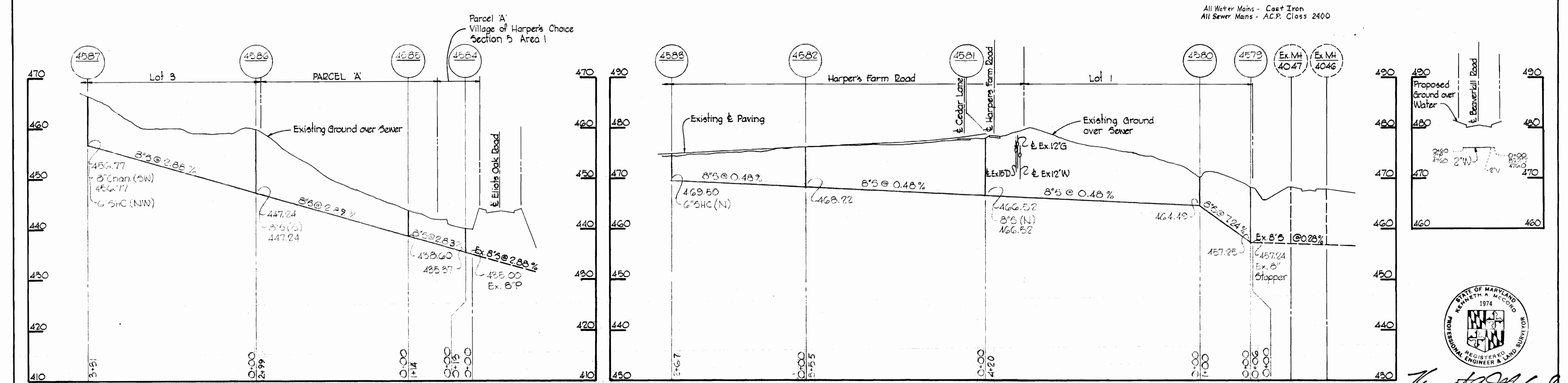
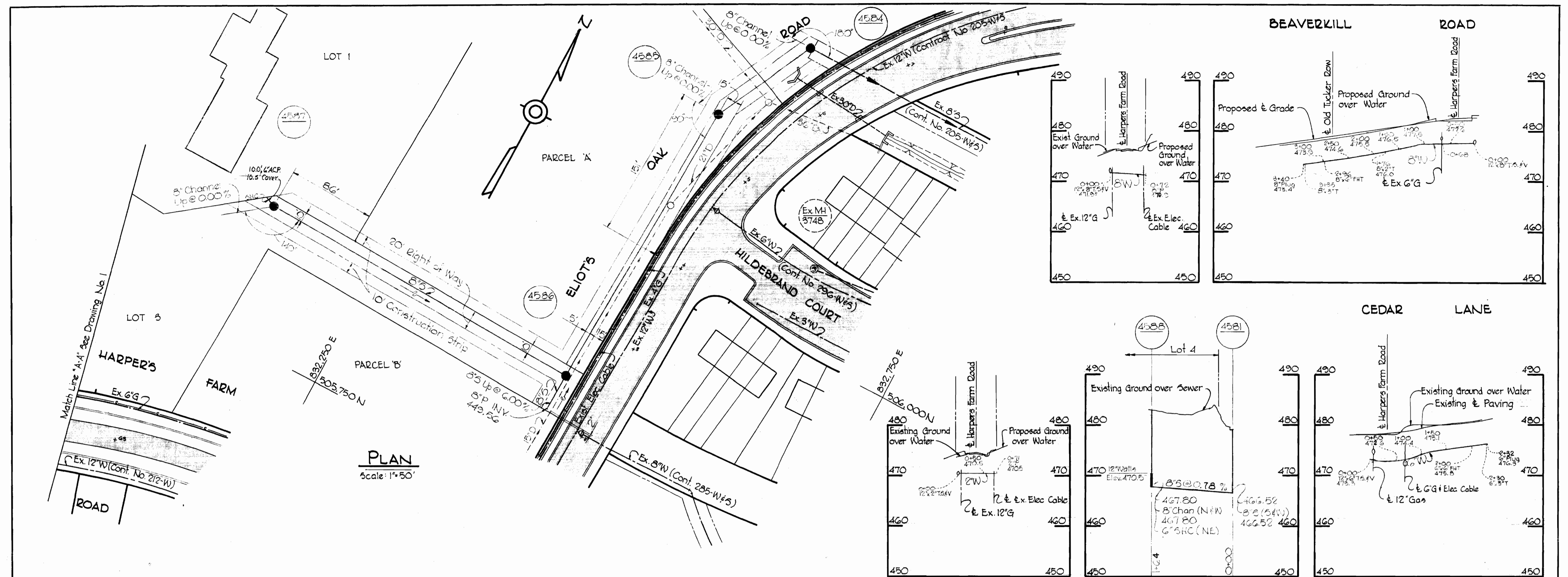
Kenneth A. McCord

Village Center
V.H.C. Section 5 Area 2
Contract No. C-364-W#5

<p>WHITMAN, REQUARDT & ASSOCIATES ENGINEERS 1304 ST. PAUL ST. BALTIMORE, MARYLAND</p>	<p>DEPARTMENT OF PUBLIC WORKS HOWARD COUNTY, MARYLAND 5-5-70 DATE</p> <p><i>W.O. Filbert</i> CHIEF-BUREAU OF WATER AND SEWER</p>	<p>CONTRACT NO. C-364-W#5</p>	<p>PLAN OF WATER & SEWER MAINS</p>	<p>COLUMBIA VILLAGE OF HARPER'S CHOICE ELECTION DISTRICT CLARKSVILLE No. 5</p>	<p>DRAWING NO. 1 OF 3 SCALE AS SHOWN</p>
---	--	-------------------------------	--	--	--

SUSPENSE

SUSPENSE



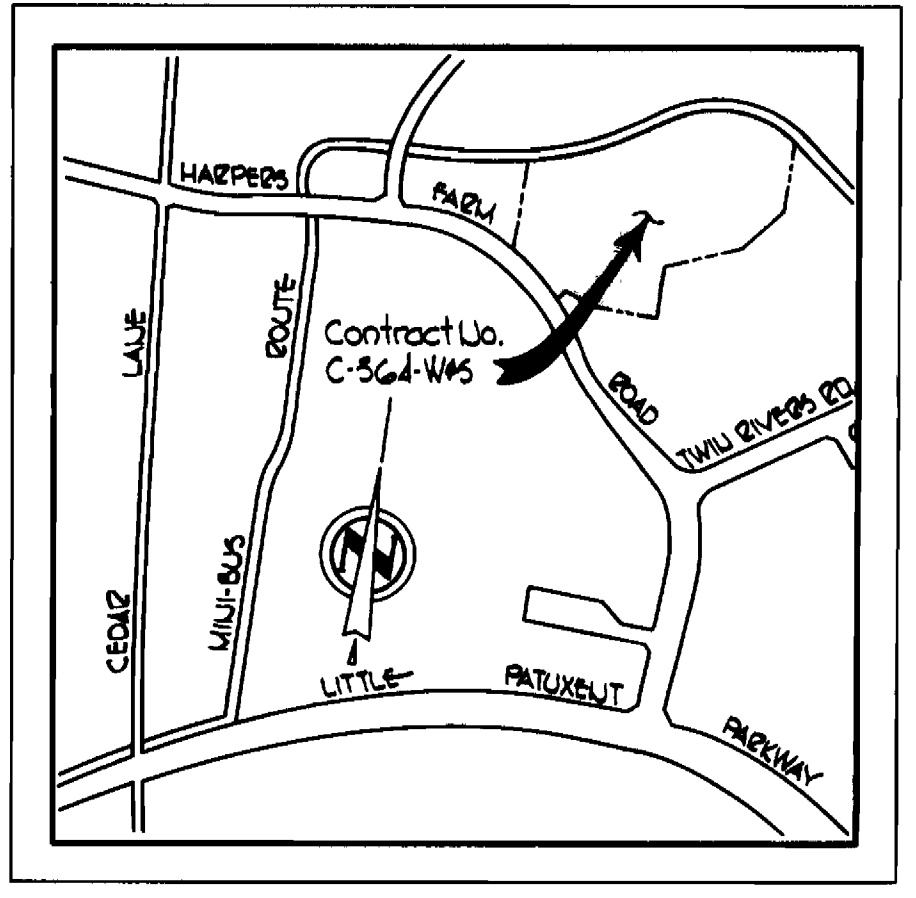
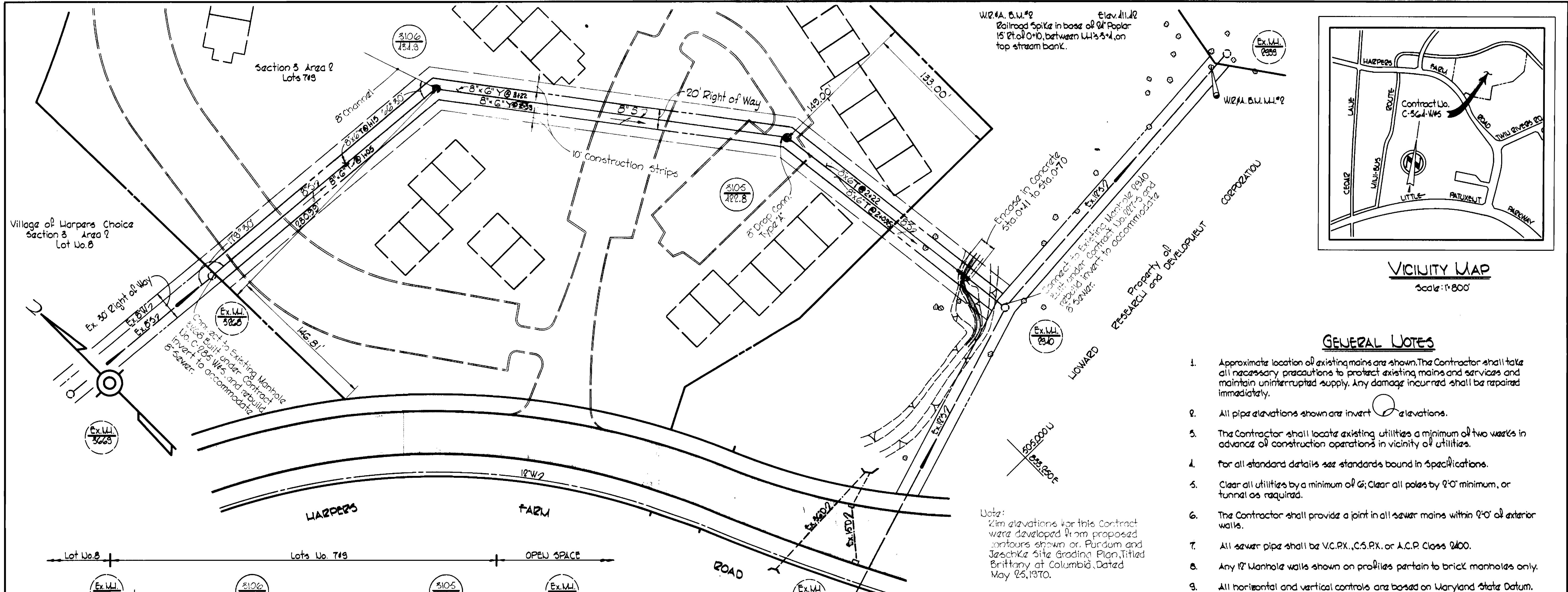
Kenneth A. Accord
 Village Center
 VHC Section 5 Area 2
 Contract No. C-364-W#5

WHITMAN, REQUARDT & ASSOCIATES ENGINEERS 1304 ST. PAUL ST. BALTIMORE, MARYLAND	DEPARTMENT OF PUBLIC WORKS HOWARD COUNTY, MARYLAND S-5-70 DATE	CONTRACT NO. C-364-W#5 <i>e.w. Falkert</i> CHIEF - BUREAU OF WATER AND SEWER	PLAN AND PROFILES OF WATER & SEWER MAINS	COLUMBIA VILLAGE OF HARPER'S CHOICE ELECTION DISTRICT CLARKSVILLE No. 5	DRAWING NO. 2 OF 3 SCALE AS SHOWN 506-476 305-476
--	---	--	---	---	--

WS 364-W#5/2

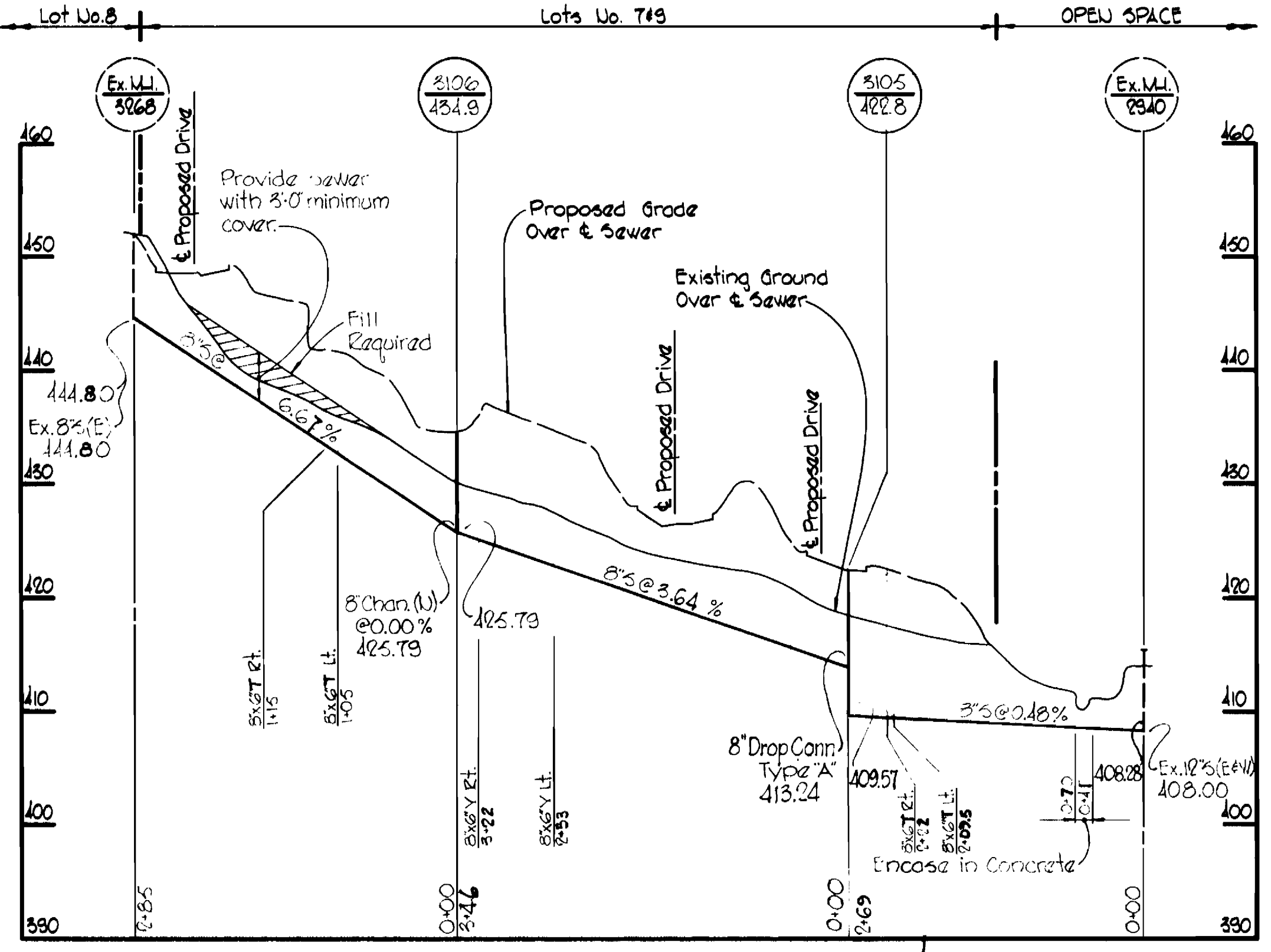
ESPELLE XI

ESPELLE XI



- GENERAL NOTES**
1. Approximate location of existing mains are shown. The Contractor shall take all necessary precautions to protect existing mains and services and maintain uninterrupted supply. Any damage incurred shall be repaired immediately.
 2. All pipe elevations shown are invert elevations.
 3. The Contractor shall locate existing utilities a minimum of two weeks in advance of construction operations in vicinity of utilities.
 4. For all standard details see standards bound in Specifications.
 5. Clear all utilities by a minimum of 6'; Clear all poles by 2'-0" minimum, or tunnel as required.
 6. The Contractor shall provide a joint in all sewer mains within 2'-0" of exterior walls.
 7. All sewer pipe shall be V.C.P.X., C.S.P.X. or A.C.P. Class 2400.
 8. Any 12" Manhole walls shown on profiles pertain to brick manholes only.
 9. All horizontal and vertical controls are based on Maryland State Datum.

Notes:
 2' in elevations for this Contract were developed from proposed contours shown on Purdom and Jeschke Site Grading Plan, Titled Brittany at Columbia, Dated May 25, 1970.



PROFILE
 Scale: Horiz.: 1"=100'
 Vert.: 1"=10'

WHITMAN, REQUARDT & ASSOCIATES
 ENGINEERS
 1304 ST. PAUL ST.
 BALTIMORE, MARYLAND

DEPARTMENT OF PUBLIC WORKS
 HOWARD COUNTY, MARYLAND
 DATE: 6-3-70
 W. O. Pellmar
 CHIEF-BUREAU OF WATER AND SEWER

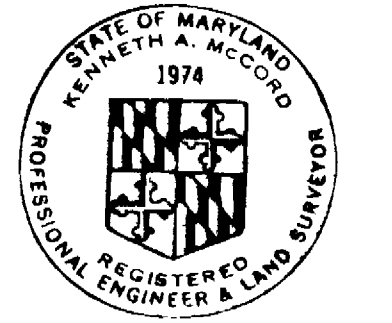
CONTRACT NO. C-364 WBS

PLAN AND PROFILE OF WATER & SEWER MAINS

COLUMBIA VILLAGE OF HARPERS CHOICE ELECTION DISTRICT CLARKSVILLE No.5

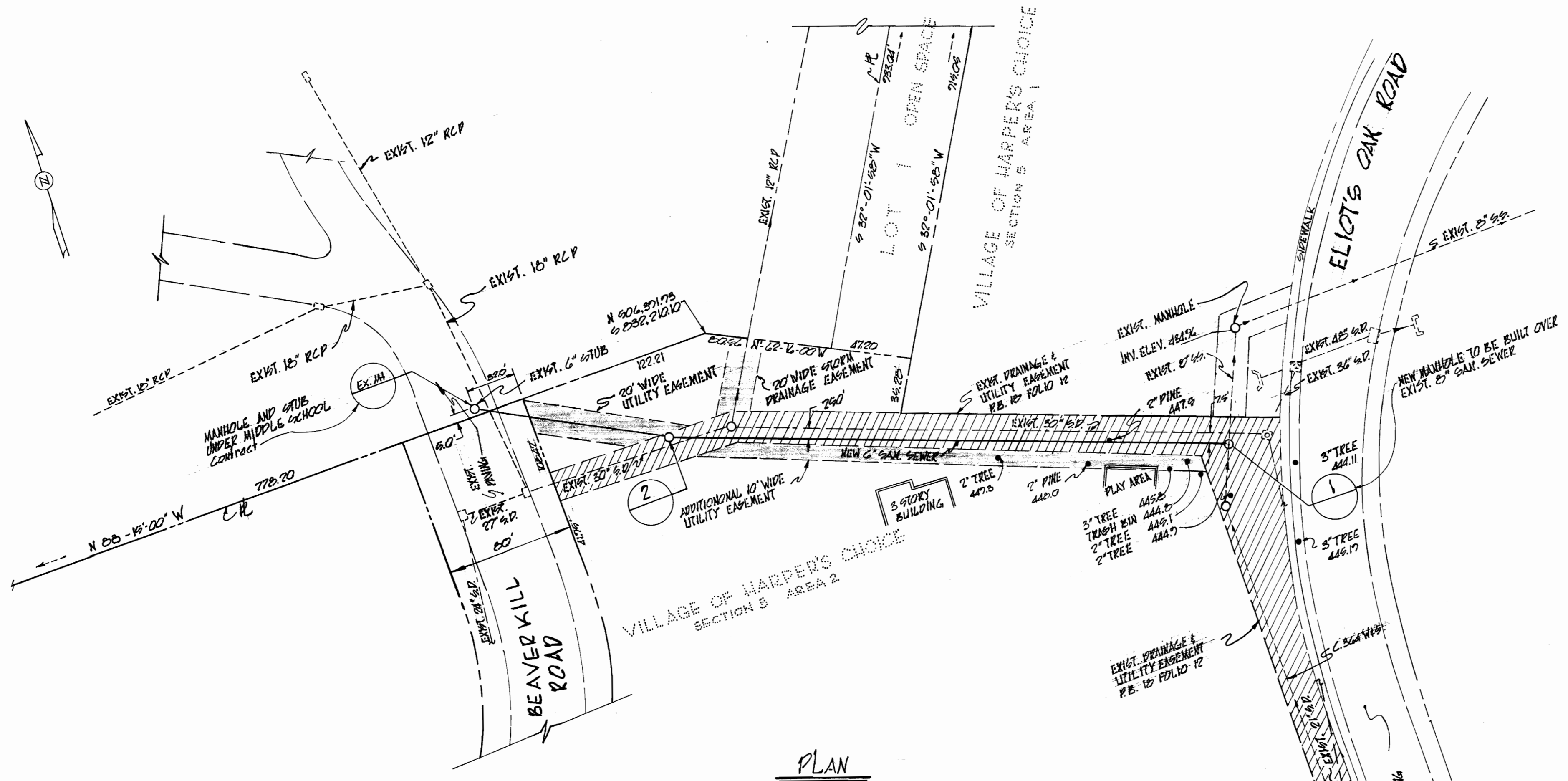
DRAWING NO. 2A OF 3 SCALE AS SHOWN

AS BUILT OCTOBER 15, 1970

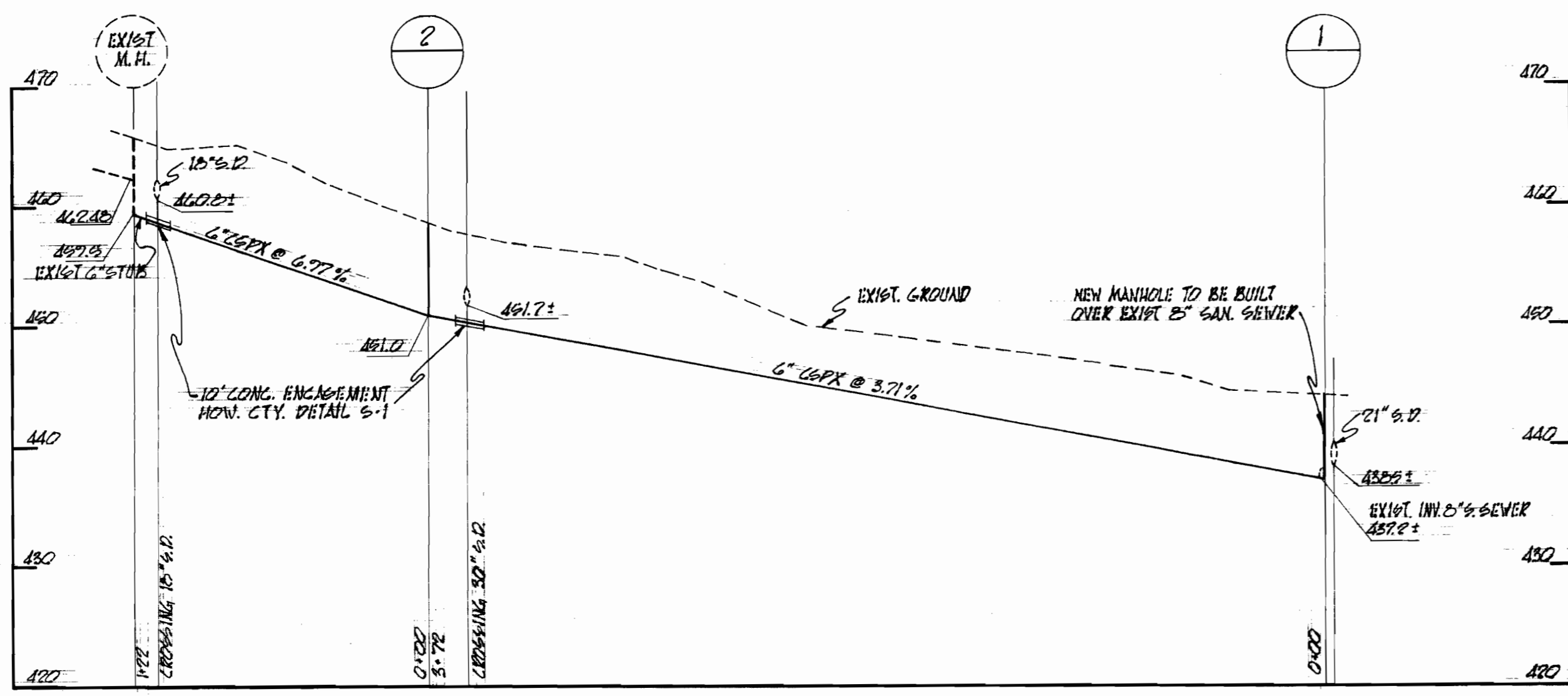


Kenneth A. McCoy

Village of Harpers Choice
 Brittany at Columbia
 Section 3, Area 2, Lots 749
 Contract No. C-364-WBS



PLAN
SCALE: 1"=60'



PROFILE
SCALE: HORIZ. 1"=20'
VERT. 1"=10'

GENERAL NOTES

1. INFORMATION CONCERNING UNDERGROUND UTILITIES WAS OBTAINED FROM AVAILABLE RECORDS, BUT THE CONTRACTOR MUST DETERMINE THE EXACT LOCATION & ELEVATION OF THE MAINS BY DIGGING TEST PITS BY HAND AT ALL UTILITIES CROSSING WELL IN ADVANCE OF TRENCHING. IF CLEARANCES ARE LESS THAN SHOWN OR SIX (6) INCHES, WHICHEVER IS LESS, CONTACT THE ENGINEER BEFORE PROCEEDING WITH CONSTRUCTION.
2. THE CONTRACTOR SHALL TAKE ALL NECESSARY PRECAUTIONS TO PROTECT EXISTING MAINS AND SERVICES AND MAINTAIN UNINTERRUPTED SUPPLY. ANY DAMAGES INCURRED SHALL BE REPAIRED IMMEDIATELY.
3. ALL PIPE ELEVATIONS SHOWN ARE INVERT ELEVATIONS: ELEV. ✓
4. THE CONTRACTOR SHALL LOCATE EXISTING UTILITIES A MINIMUM OF TWO WEEKS IN ADVANCE OF CONSTRUCTION OPERATIONS IN VICINITY OF UTILITIES.
5. THE CONTRACTOR SHALL PROVIDE A JOINT IN ALL SEWER MAINS WITHIN 2'-0" OF MANHOLE WALLS.
6. ALL SEWER PIPE SHALL BE VEPX, C6PX, OR ACP CLASS 2000 UNLESS OTHERWISE NOTED.
7. ALL CONSTRUCTION SHALL MEET THE APPLICABLE REQUIREMENTS OF THE HOWARD COUNTY DEPT. OF PUBLIC WORKS STANDARD SPECIFICATIONS AND DETAILS FOR WATER MAINS AND SANITARY SEWERS.

This drawing copied from a print dated 5-11-72, by Howard County Department of Public Works Inspection/Survey Division.

This drawing copied from a print dated 5-11-72, by Howard County Department of Public Works Inspection/Survey Div.

ASSOCIATED ENGINEERS, INC. CIVIL ENGINEERS & LAND SURVEYORS 8555 SIXTEENTH STREET SILVER SPRING, MARYLAND 20910	DEPARTMENT OF PUBLIC WORKS HOWARD COUNTY, MARYLAND DATE _____ CHIEF: BUREAU OF WATER AND SEWER	CONTRACT NO. C-364-W&S	PLAN AND PROFILE FOR SANITARY SEWER	COLUMBIA VILLAGE OF HARPER'S CHOICE ELECTION DISTRICT CLARKSVILLE No. 5	DRAWING NO. <u>3</u>	SCALE AS SHOWN
					OF <u>3</u>	T.A.P.

WS 364-W&S/3