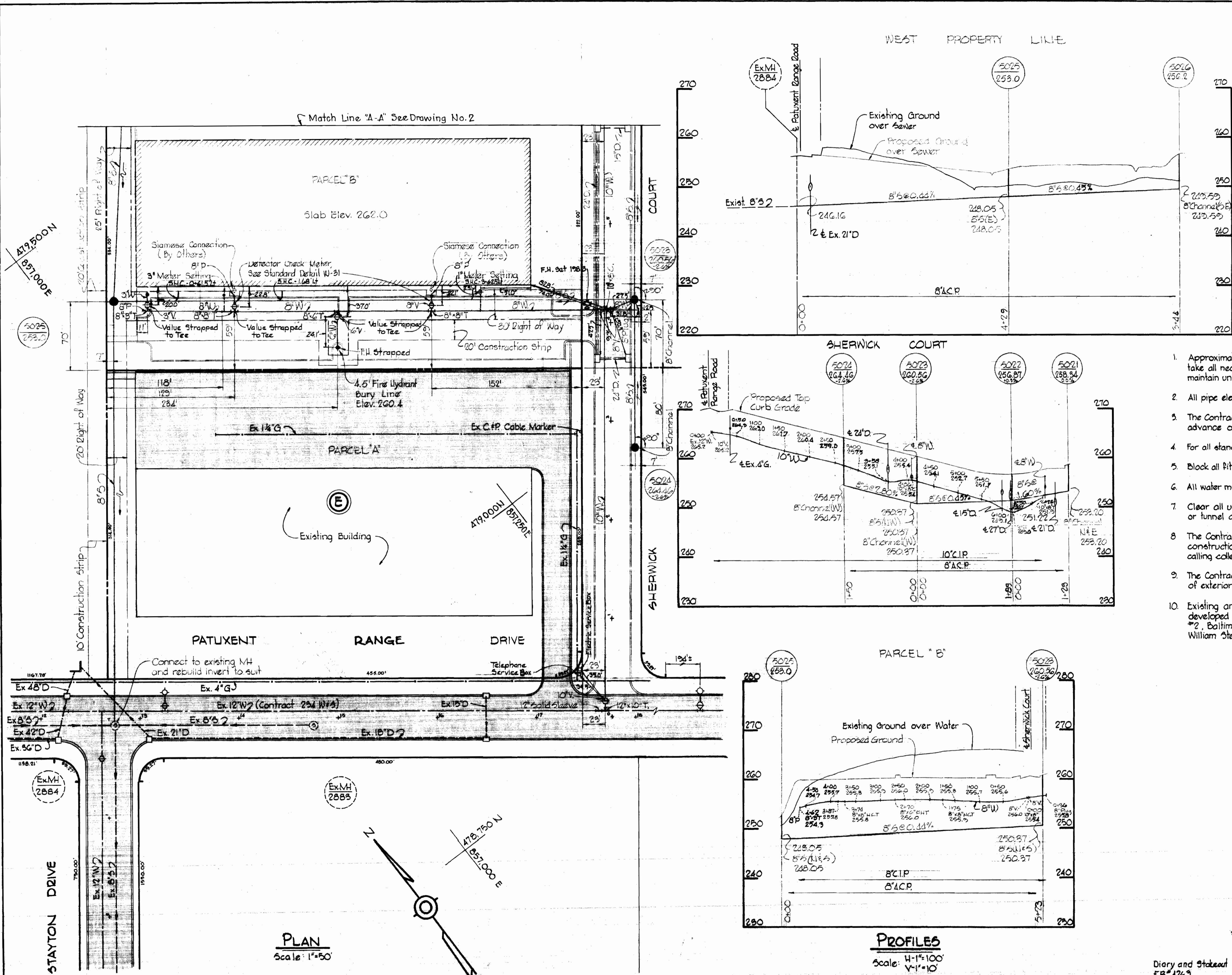
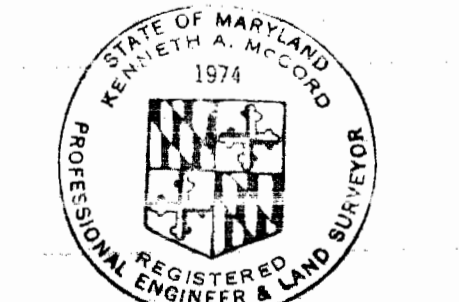


VICINITY MAP
Scale: 1"=1200'



GENERAL NOTES

1. Approximate location of existing mains are shown. The Contractor shall take all necessary precautions to protect existing mains and services and maintain uninterrupted supply. Any damage incurred shall be repaired immediately.
2. All pipe elevations shown are invert elevations.
3. The Contractor shall locate existing utilities a minimum of two weeks in advance of construction operations in vicinity of utilities.
4. For all standard details see standards bound in Specifications.
5. Block all fittings with concrete, see standards bound in Specifications.
6. All water mains to have a minimum of 3 1/2' cover.
7. Clear all utilities by a minimum of 6', clear all poles by 2'-0" minimum or tunnel as required.
8. The Contractor shall notify the Telephone Company prior to any construction activities in the vicinity of the telephone cables by calling collect at 685-0400 in Baltimore, Maryland.
9. The Contractor shall provide a joint in all sewer mains within 2'-0" of exterior manhole walls.
10. Existing and proposed ground over water and sewer mains were developed from a plan titled "Scheme C", Site Plan, Spec. Building #2, Baltimore-Washington Industrial Park, prepared by George William Stephens Jr and Associates, Inc.



Kenneth A. McLeod
Baltimore, Washington Industrial Park
Contract No. 363-W&S

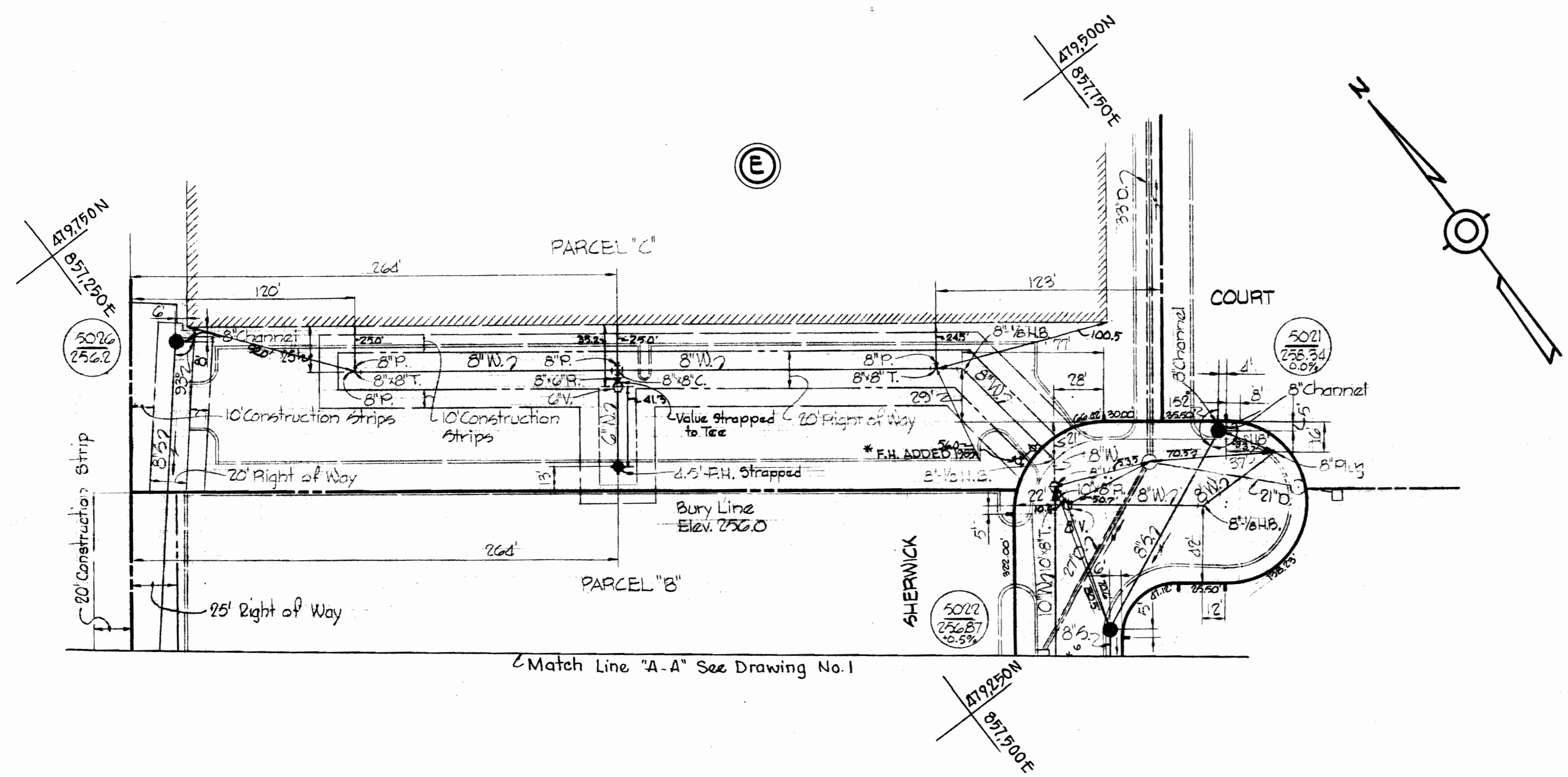
Diary and Stakeout
FB# 4763

<p>WHITMAN, REQUARDT & ASSOCIATES ENGINEERS 1304 ST. PAUL ST. BALTIMORE, MARYLAND</p>	<p>DEPARTMENT OF PUBLIC WORKS HOWARD COUNTY, MARYLAND 8-24-70 DATE</p> <p><i>W. O. G. 24-2</i> CHIEF - BUREAU OF WATER AND SEWER</p>	<p>CONTRACT NO. 363-W&S</p>	<p>PLAN & PROFILES WATER & SEWER MAINS</p>	<p>ELECTION DISTRICT GUILFORD NO. 6</p>	<p>DRAWING NO. 1 OF 2 SCALE AS SHOWN</p>
---	--	---------------------------------	--	---	--

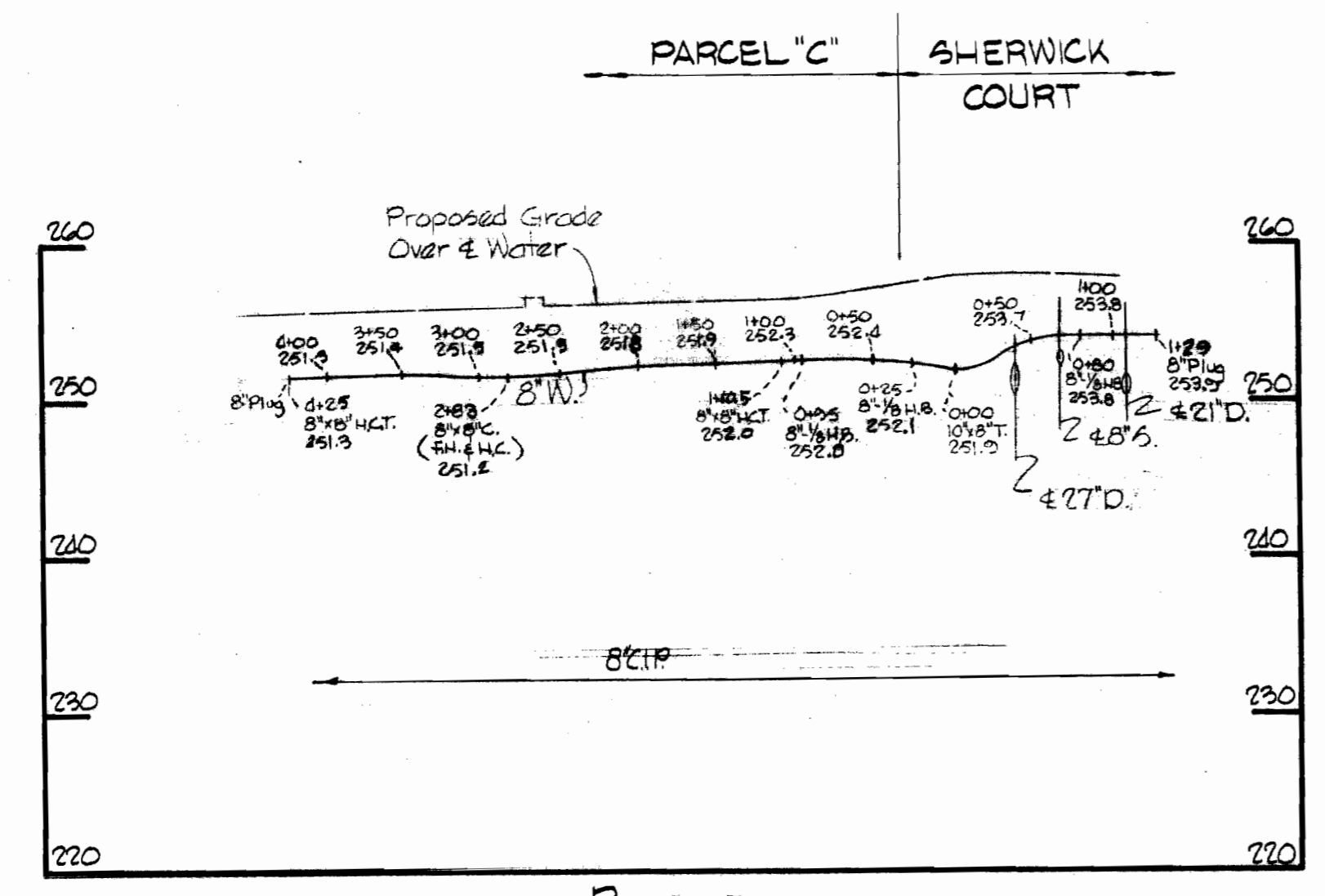
WS 363-W&S/1

SUSPENSE

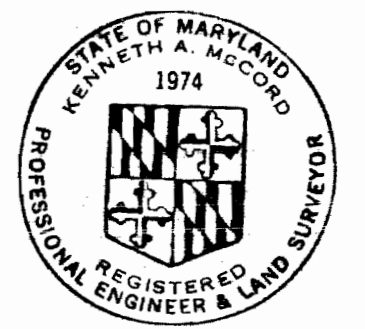
SUSPENSE



PLAN
Scale: 1" = 50'



PROFILE
Scale: Hor. 1" = 100'
Ver. 1" = 10'



Kenneth A. McCord

Baltimore Washington Industrial Park
Contract No. 363 W&S

WHITMAN, REQUARDT & ASSOCIATES ENGINEERS 1304 ST. PAUL ST. BALTIMORE, MARYLAND	DEPARTMENT OF PUBLIC WORKS HOWARD COUNTY, MARYLAND <i>W. O. Pillsbury</i> CHIEF BUREAU OF WATER AND SEWER	CONTRACT NO. 363 W&S	PLAN & PROFILE OF WATER & SEWER MAINS	ELECTION DISTRICT GUILFORD NO. 6	DRAWING NO. 2	SCALE AS SHOWN
					OF 2	

W. O. 6024-2

* F.H. ADDED 1983

AS BUILT NOVEMBER 16, 1970

WS 363-W&S/2