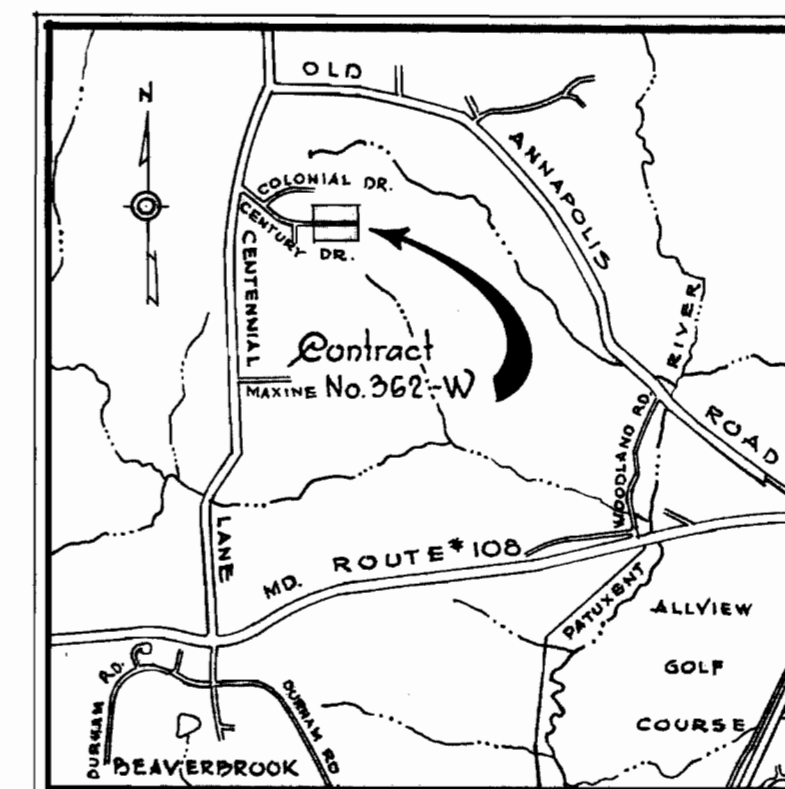


SUSPENSE

SUSPENSE

SUSPENSE



**VICINITY MAP**  
Scale: 1" = 1/2 Mile

**GENERAL NOTES**

1. Approximate location of existing mains are shown. The contractor shall take all necessary precautions to protect existing mains and services and maintain uninterrupted supply. Any damage incurred shall be repaired immediately.
2. All pipes elevations shown are invert  $\phi$  elevations.
3. The contractor shall locate existing utilities a minimum of two weeks in advance of construction operations in vicinity of utilities.
4. For all Standard Details see standards bound in Specifications.
5. All water mains shall have a minimum of 3 1/2' cover.
6. Block all fittings with concrete see standard details bound in Specifications.
7. All Fire Hydrants shall be strapped to tree and shall be buttressed with concrete in accordance with Standard Details.
8. Clear all utilities by a minimum of 6', clear all poles by 2'-0" minimum or tunnel as required.
9. All horizontal and vertical controls are based on Maryland State Datum.

QUANTITIES	
8" Water Main	620 L.F.
Fire Hydrants	1



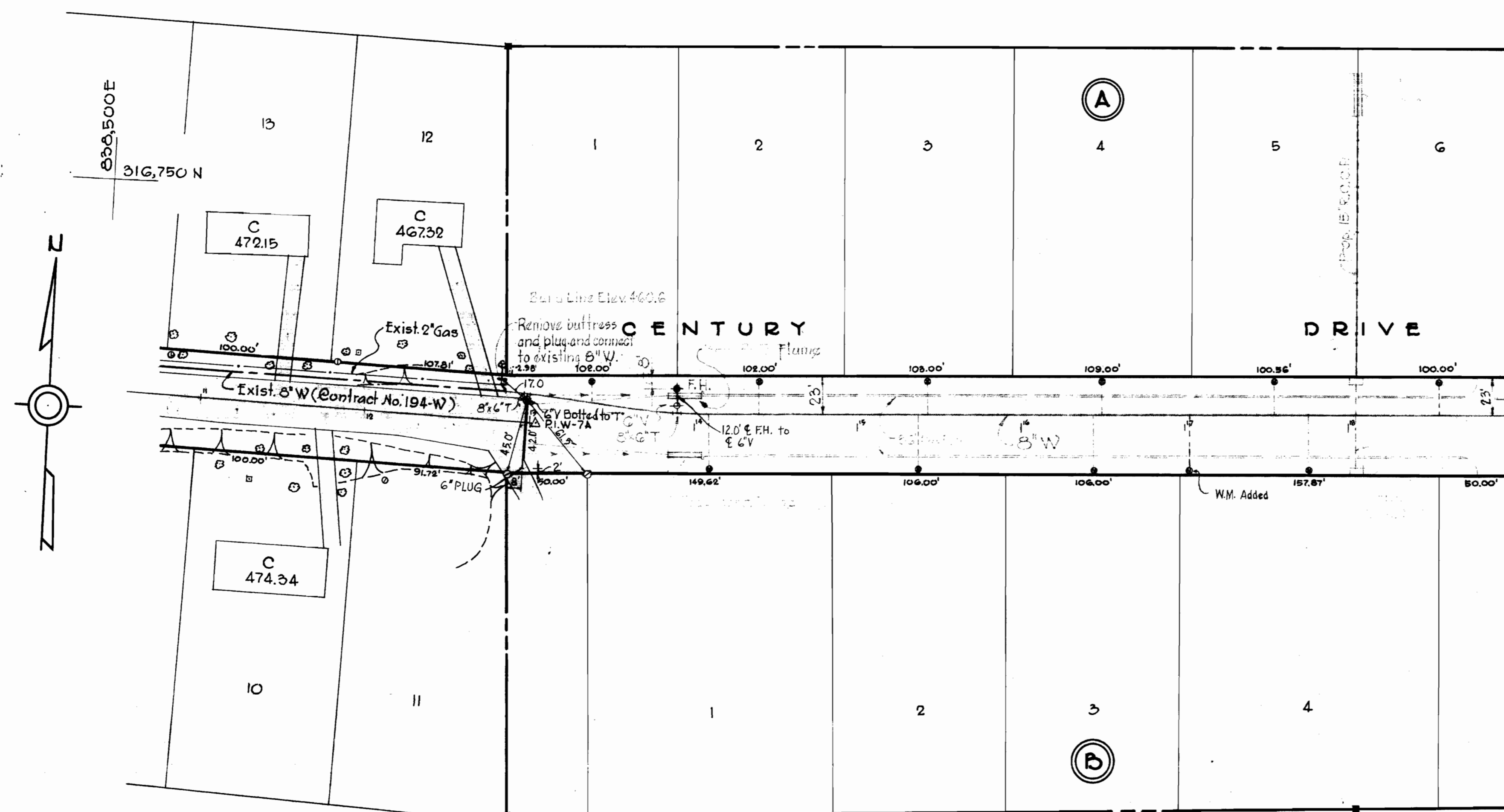
*Kenneth A. McCord*

STAKEOUT AND DIARY  
in F.B. # 4749

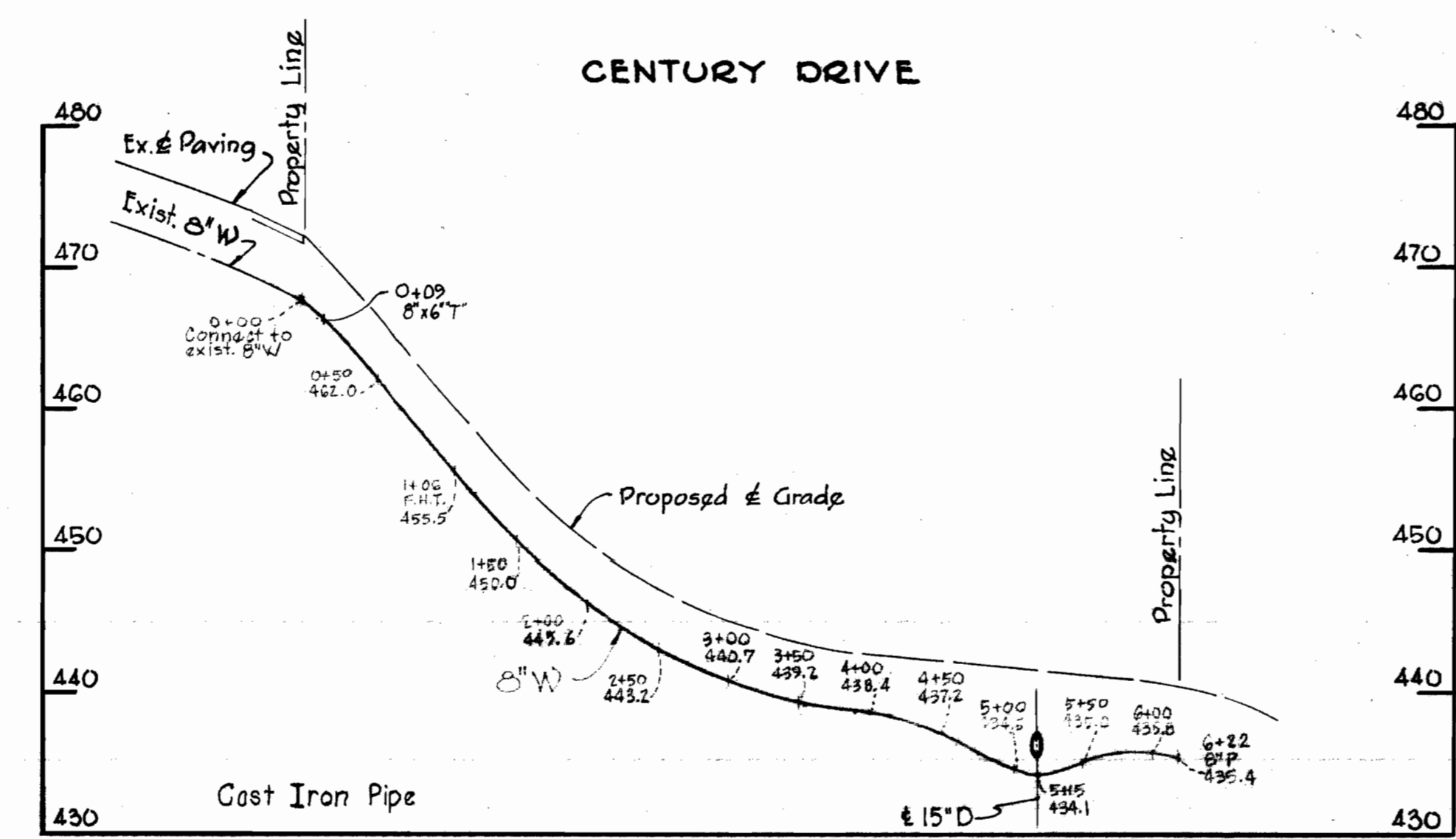
GERALD A. O'DONNELL SUBDIVISION  
Section 2  
Contract No. 362-W

DRAWING NO. 1 OF 1	SCALE AS SHOWN
--------------------	----------------

AS BUILT April 13, 1971



**PLAN**  
Scale: 1" = 50'



**PROFILE**  
Scale: Horizontally 1" = 100', Vertically 1" = 10'

WHITMAN, REQUARDT & ASSOCIATES  
ENGINEERS  
1304 ST. PAUL ST.  
BALTIMORE, MARYLAND

DEPARTMENT OF PUBLIC WORKS  
HOWARD COUNTY, MARYLAND  
DATE 6-3-70  
*W. O. Puller*  
CHIEF-BUREAU OF WATER AND SEWER

CONTRACT NO. 362-W

PLAN AND PROFILE OF  
WATER MAINS

ELECTION DISTRICT  
ELLICOTT CITY No. 2