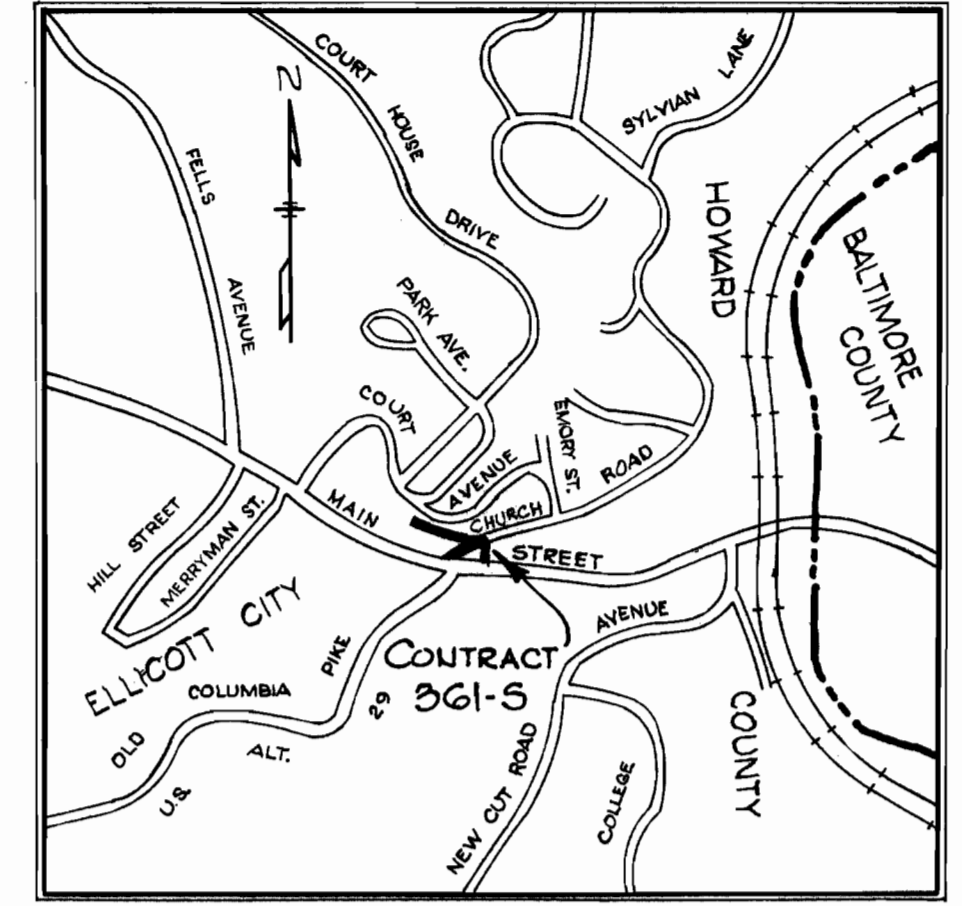


WR&A B.M.*L-3 Elev. 213.68

R.R. spike in G & E Polg #334925,
4' Left of P.I. L-4 at Intersection
Court Ave & Court Place-

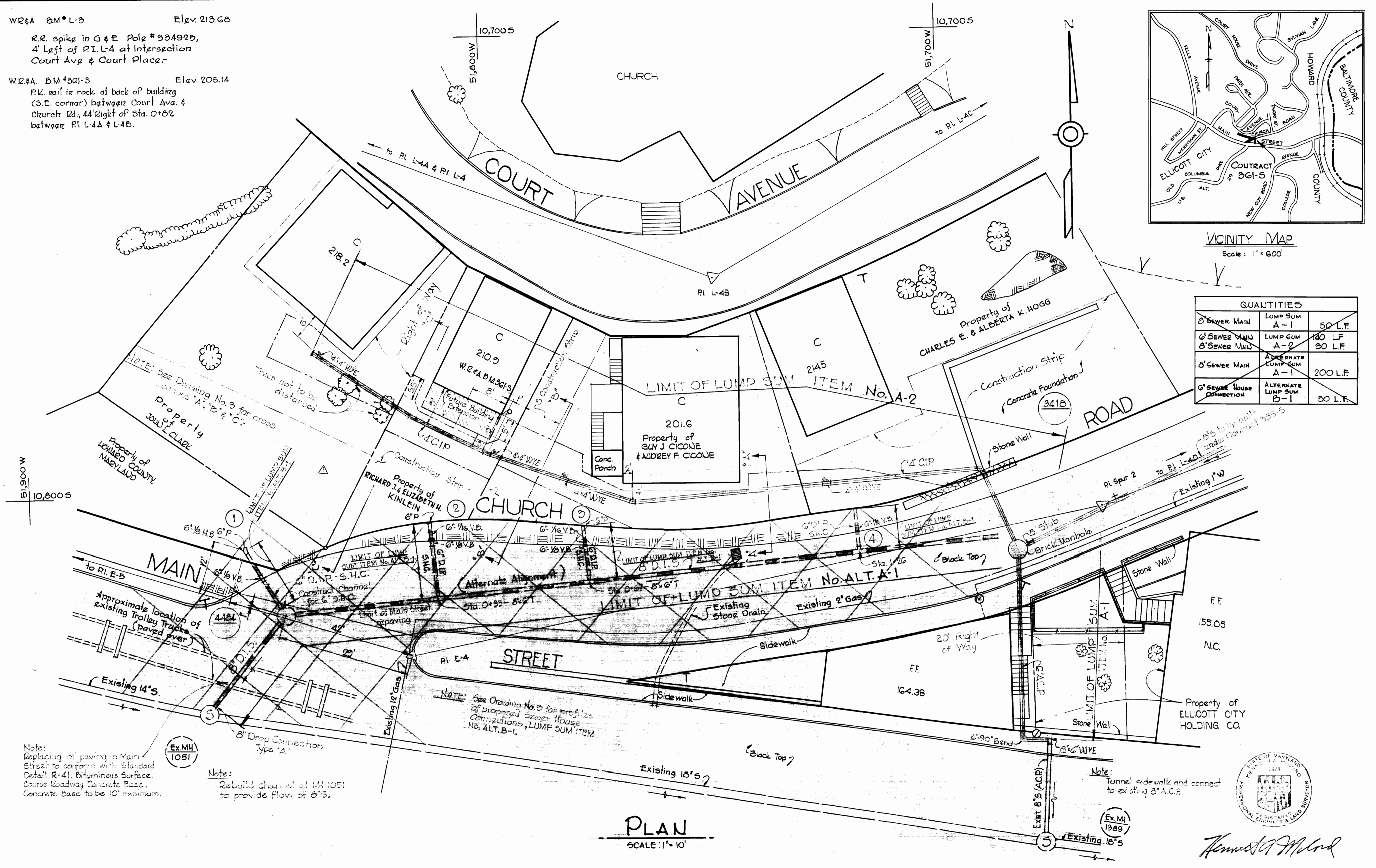
W.R.&A. B.M.*361-S Elev. 205.14

P.K. rail in rock at back of building
(S.E. corner) between Court Ave. &
Church Rd., 44' Right of Sta. 0+82
between P.I. L-4A & L-4B.



VICINITY MAP
Scale: 1" = 600'

QUANTITIES		
8" SEWER MAIN	LUMP SUM A-1	50 L.F.
8" SEWER MAIN	LUMP SUM A-2	140 L.F.
8" SEWER MAIN	ALTERNATE LUMP SUM A-1	200 L.F.
8" SEWER HOUSE CONNECTION	ALTERNATE LUMP SUM B-1	50 L.F.



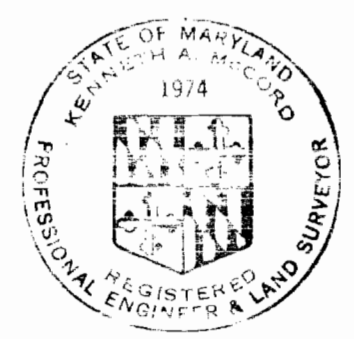
PLAN
SCALE: 1" = 10'

Note:
Replacing of paving in Main
Street to conform with Standard
Detail R-41. Bituminous Surface
Course Roadway Concrete Base.
Concrete base to be 10" minimum.

Note:
Rebuild channel at MH 1051
to provide flow of 6"3.

Note: See Drawing No. 3 for profiles
of proposed sewer house
connections, LUMP SUM ITEM
No. ALT. B-1.

Note:
Tunnel sidewalk and connect
to existing 8" A.C.P.



Kenneth A. Melrod
REGISTERED PROFESSIONAL ENGINEER & LAND SURVEYOR

ELlicott CITY-BACK OF COURT AVE.
Contract No. 361-S

1	8-20-70	Revision to Property of John L. Clark
No.	Date	Revision

WHITMAN, REQUARDT & ASSOCIATES
ENGINEERS
1304 ST. PAUL ST.
BALTIMORE, MARYLAND

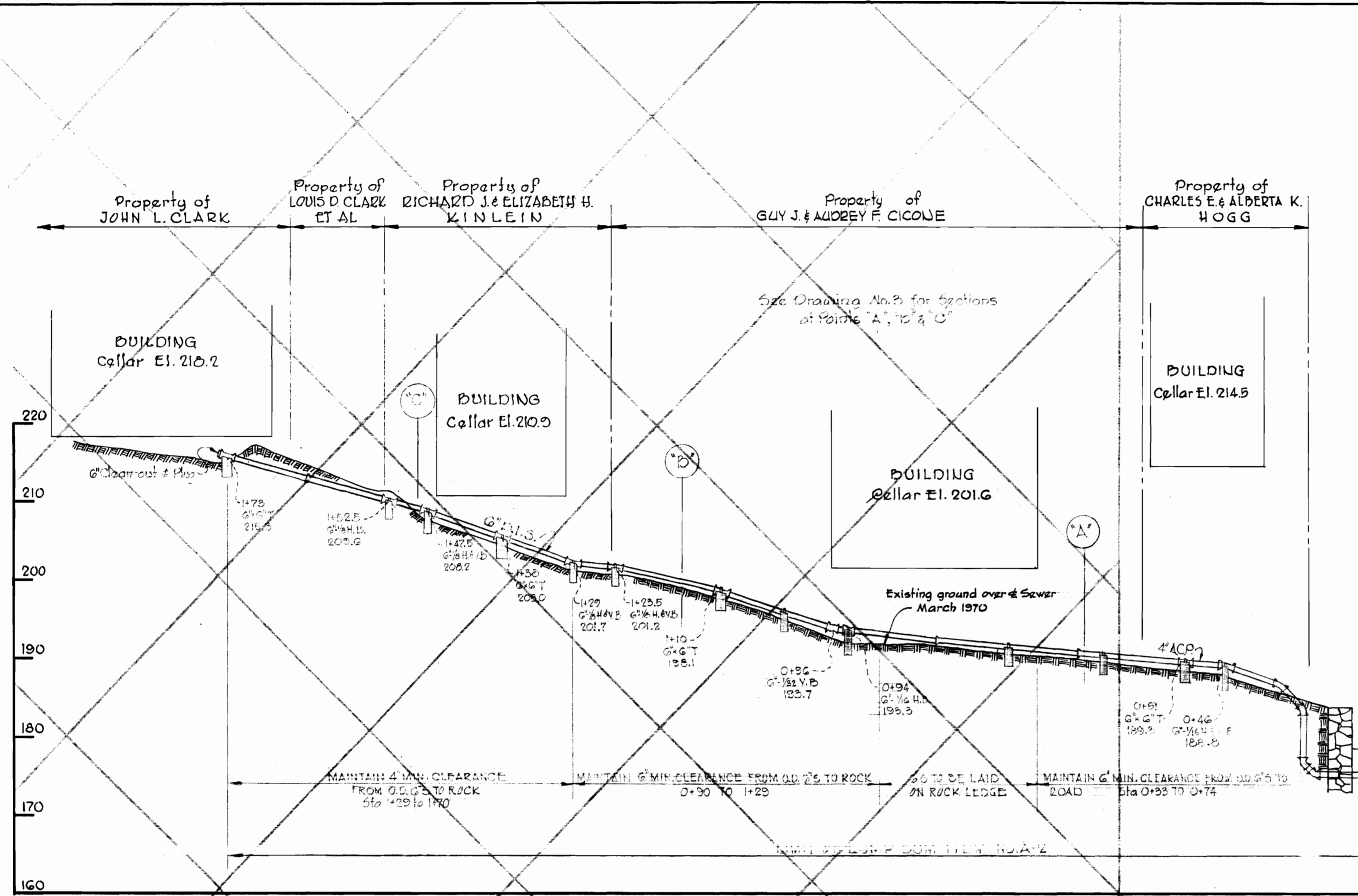
DEPARTMENT OF PUBLIC WORKS
HOWARD COUNTY, MARYLAND
4-15-70
W. O. Fellert
CHIEF - BUREAU OF WATER AND SEWER

CONTRACT NO. 361-S

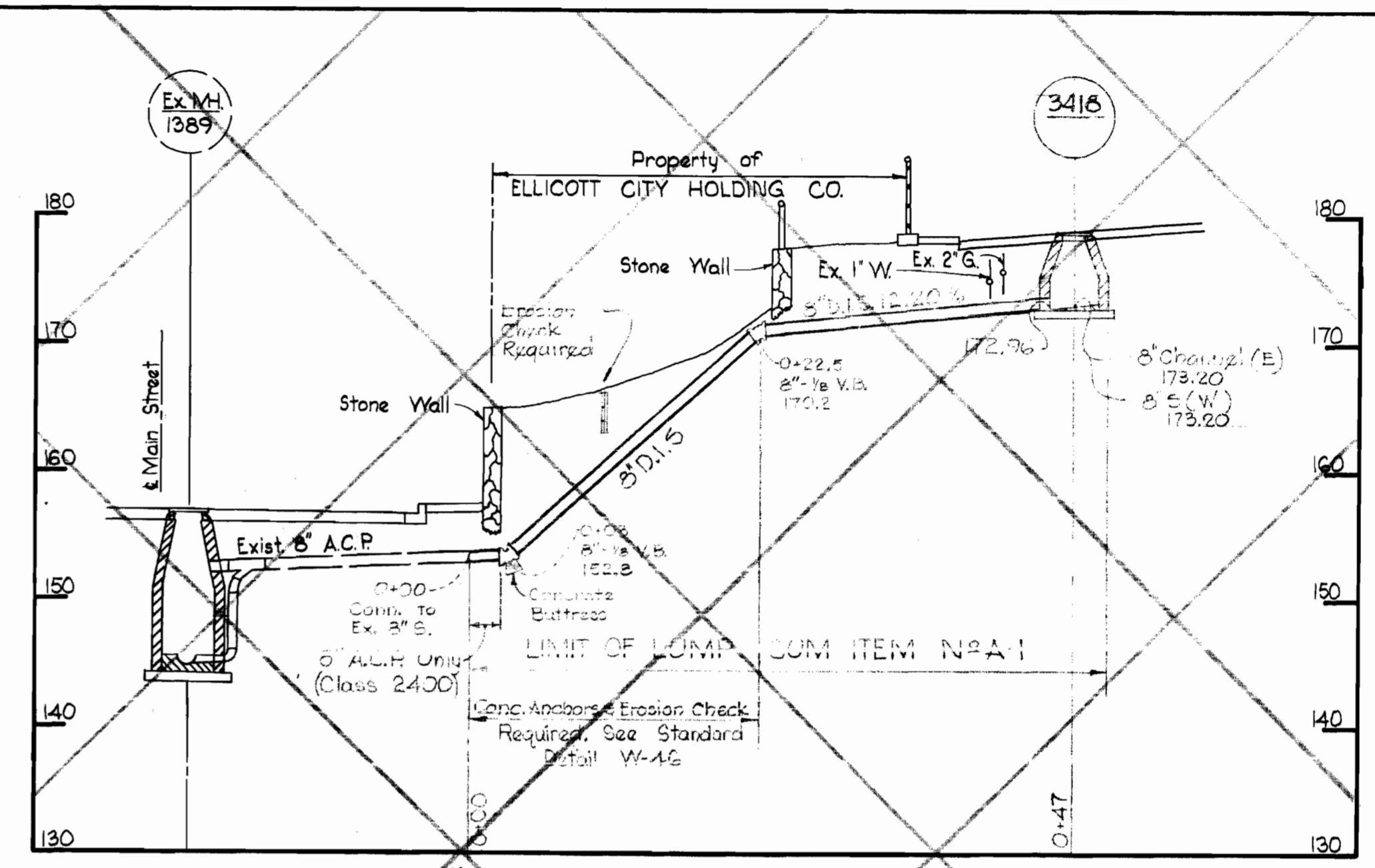
PLAN OF
SEWER MAINS

ELECTION DISTRICT
ELlicott CITY NO. 2

DRAWING NO. 1 OF 3	SCALE AS SHOWN
	11 5W 35

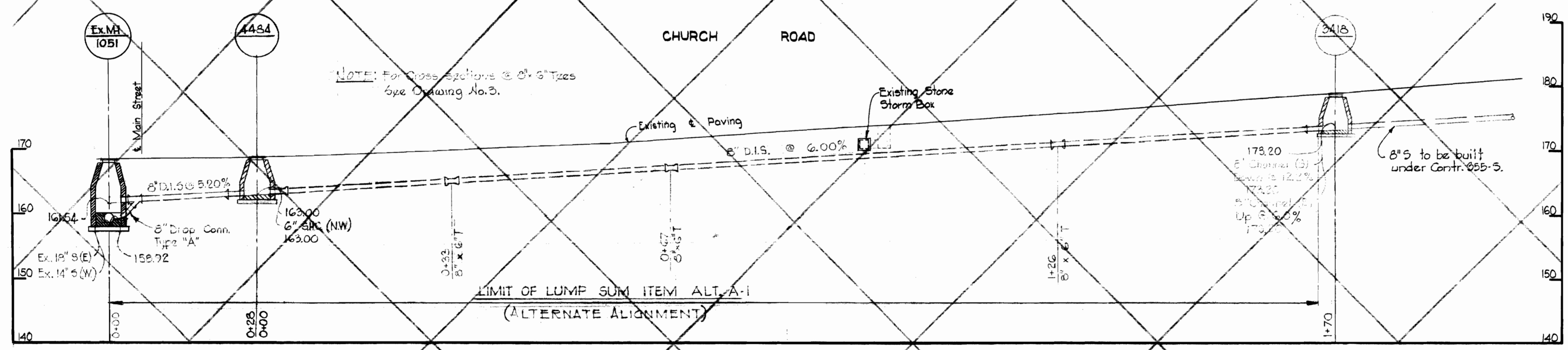


PROFILE OF 6" SEWER AT REAR OF BUILDINGS



PROFILE OF 8" S-MAIN STREET TO CHURCH ROAD

- GENERAL NOTES**
1. Approximate location of existing mains are shown. The Contractor shall take all necessary precautions to protect the existing mains and services and maintain uninterrupted supply. Any damage incurred shall be repaired immediately.
 2. All pipe elevations shown are invert elevations.
 3. The Contractor shall locate existing utilities a minimum of two weeks in advance of construction operations in vicinity of utilities.
 4. For all standard details, see Standards bound in the Specifications.
 5. All 6" Cast Iron Sewer Pipe to be Ductile Iron sewer pipe Class 2 unless otherwise noted.
 6. Build manholes to existing paving unless otherwise noted.
 7. Clear all poles by 2.0' minimum or tunnel as required. Clear all existing utilities by 6' minimum.
 8. Cost of erosion Checks and Concrete Anchors to be included in the Lump Sum Prices Bid.
 9. The Contractor shall provide a joint in all sewer mains within 2.0' of exterior manhole walls.
 10. Elevations and Coordinates are based upon Howard County Datum.



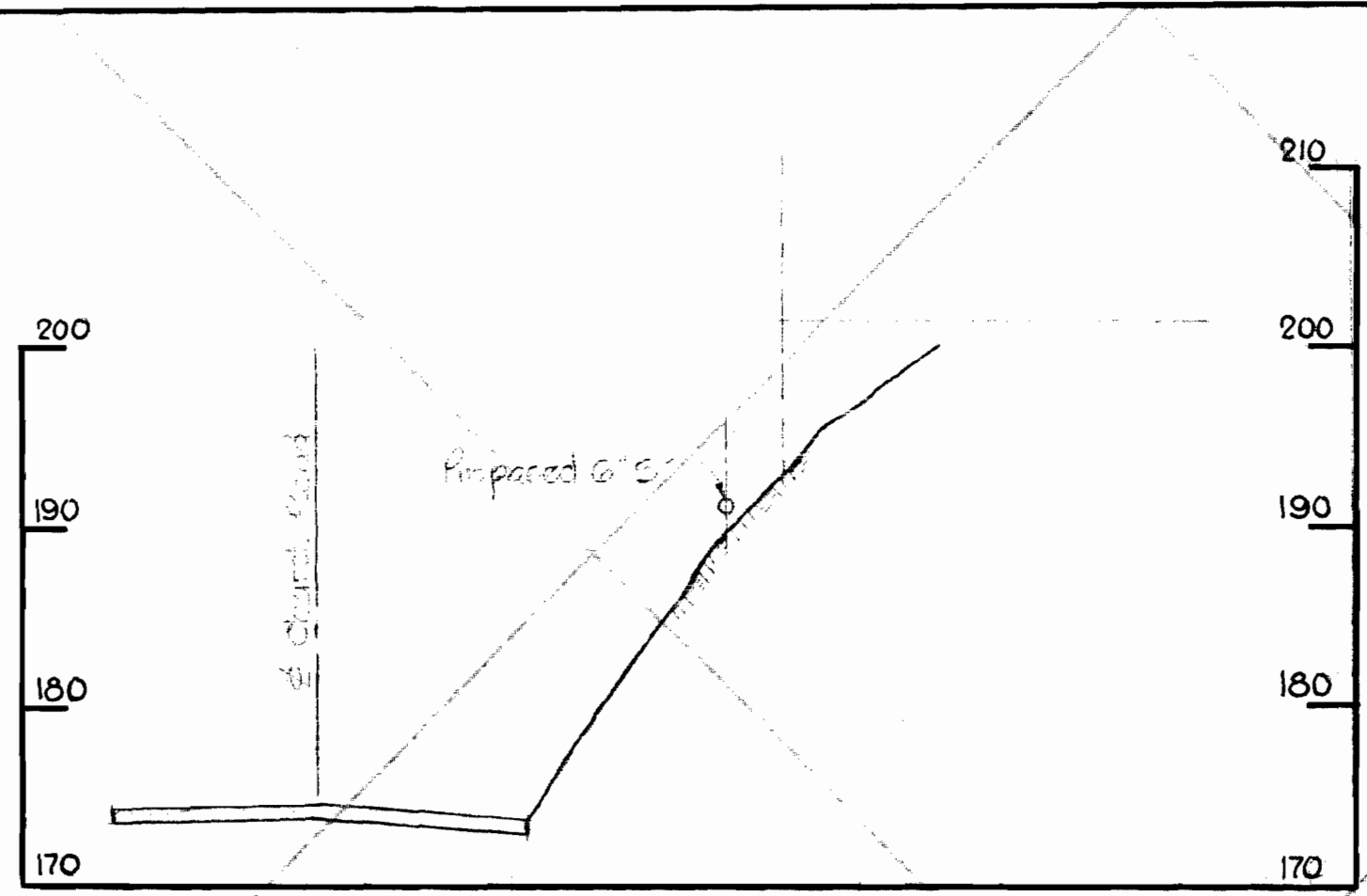
PROFILE OF ALTERNATE SEWER ALIGNMENT IN CHURCH ROAD



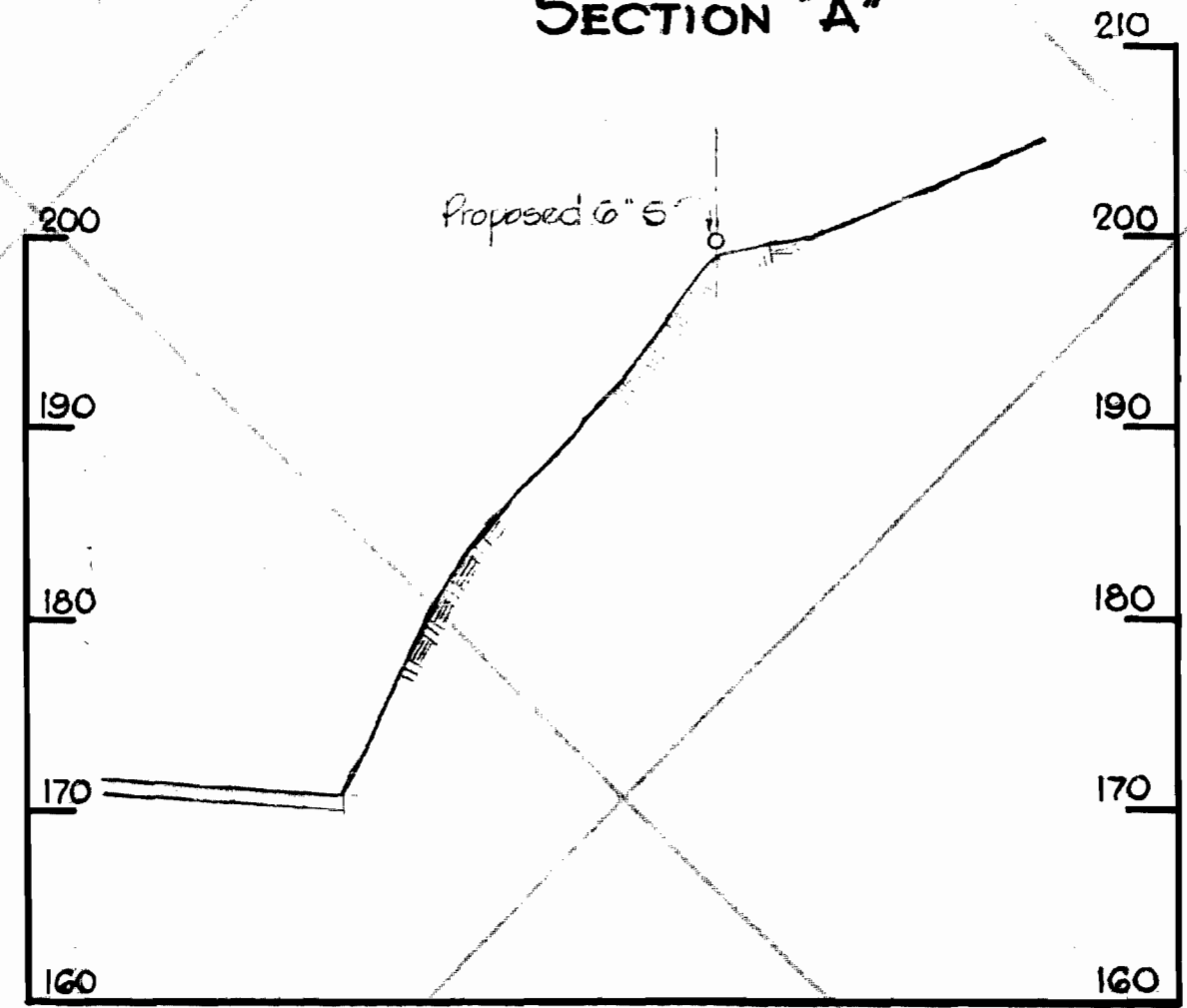
Herbert A. Whitman

ELLICOTT CITY - BACK OF COURT AVE
Contract No. 361-5

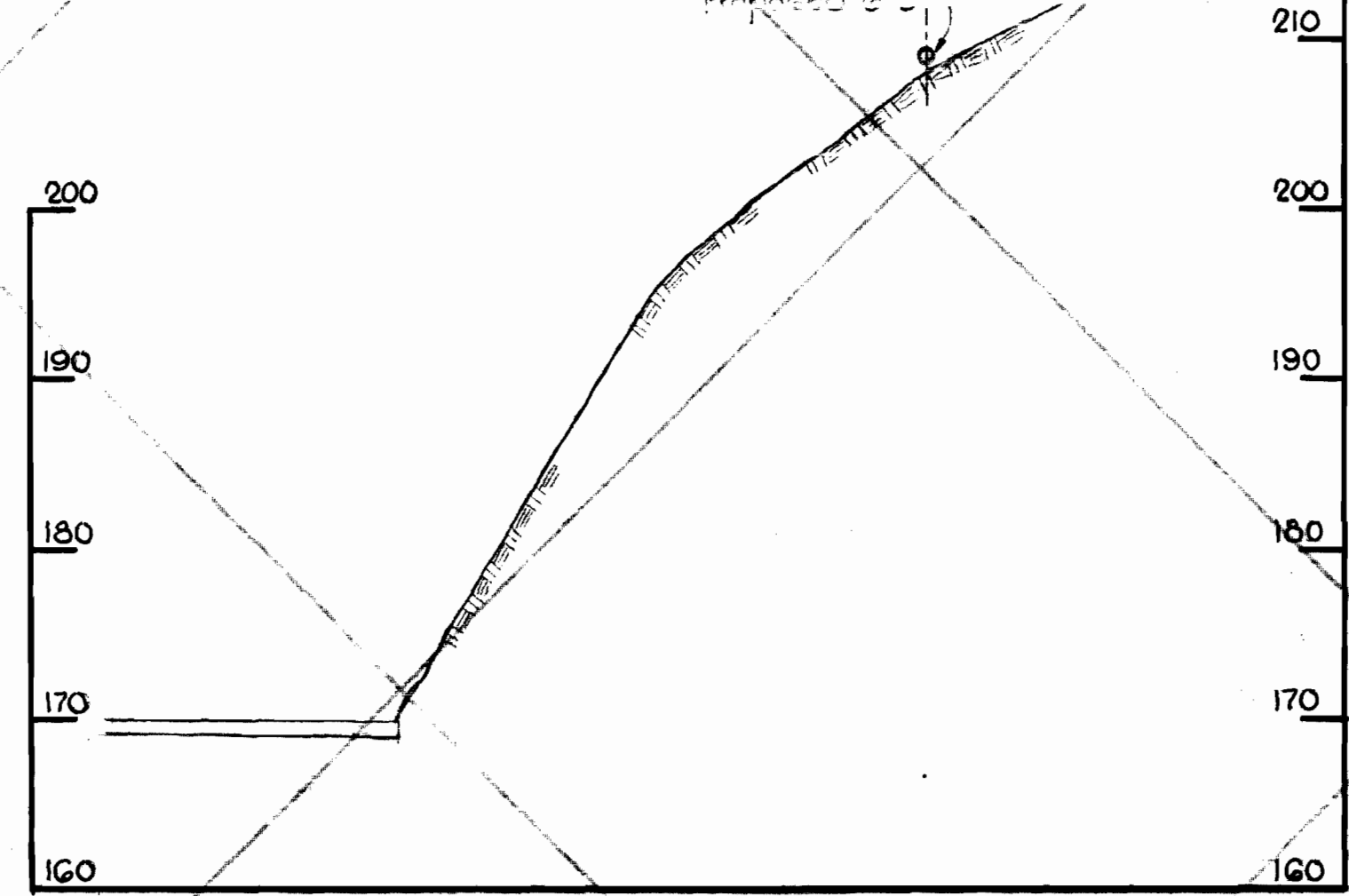
WHITMAN, REQUARDT & ASSOCIATES ENGINEERS 1304 ST. PAUL ST. BALTIMORE, MARYLAND	DEPARTMENT OF PUBLIC WORKS HOWARD COUNTY, MARYLAND 4-15-70 DATE	W. O. Fallick CHIEF - BUREAU OF WATER AND SEWER	CONTRACT NO. 361-S	PROFILES OF SEWER MAINS	ELECTION DISTRICT ELLICOTT CITY NO. 2	DRAWING NO. 2 OF 3	SCALE H:1"=100' V:1"=10'
-----------------------------------------------------------------------------------------	--------------------------------------------------------------------------	----------------------------------------------------	--------------------	----------------------------	------------------------------------------	--------------------------	--------------------------------



SECTION "A"



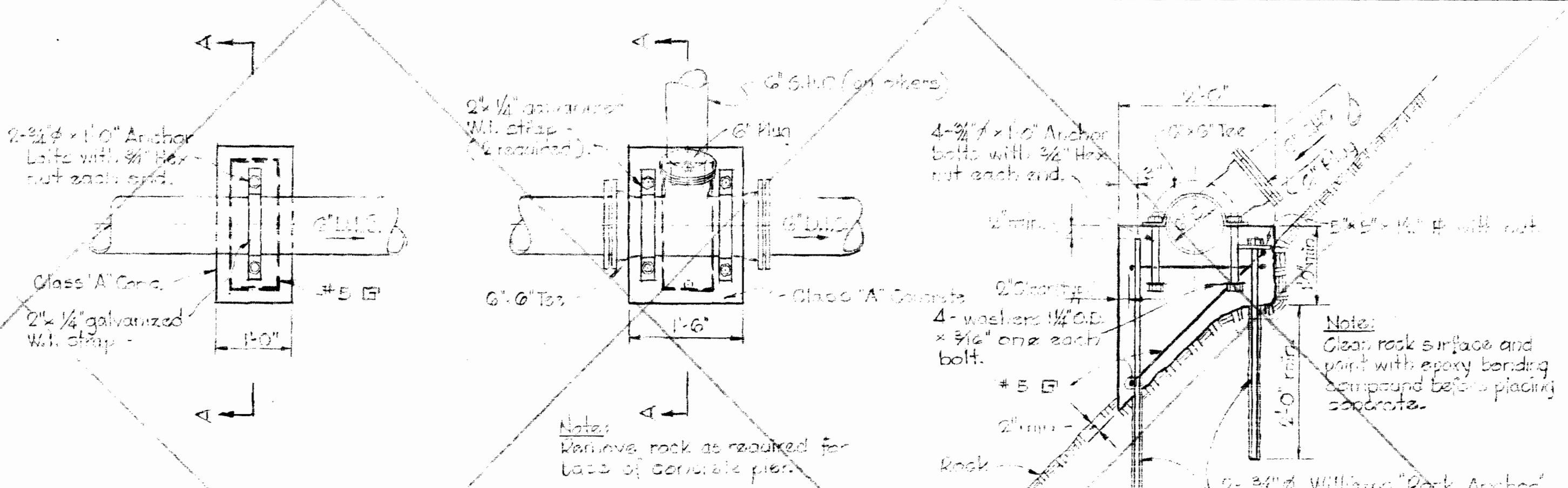
SECTION "D"



SECTION "C"

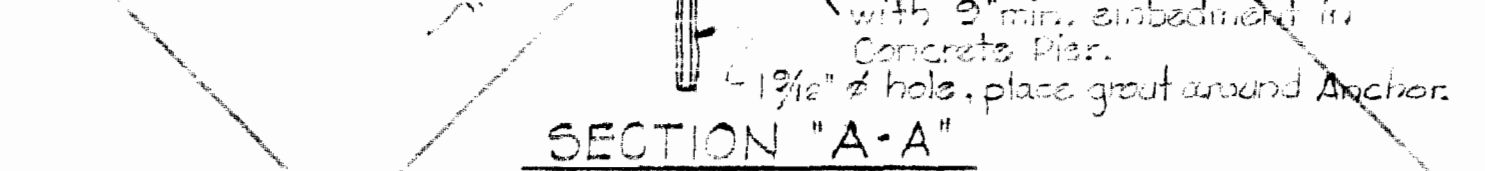
SECTIONS OF 6" SEWER AT REAR OF BUILDINGS

SCALE: 1" = 10' H & V



PLAN OF PIPE PIER

PLAN

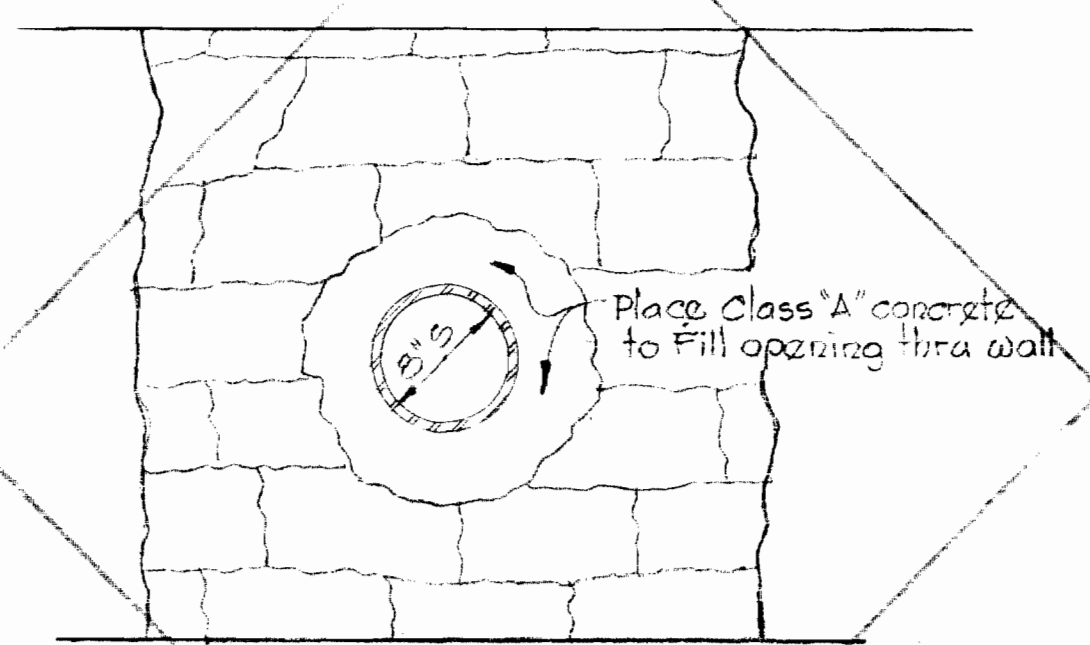


SECTION "A-A"

DETAIL OF PIER AT 6" x 6" TEE

Scale: 3/4" = 1'-0"

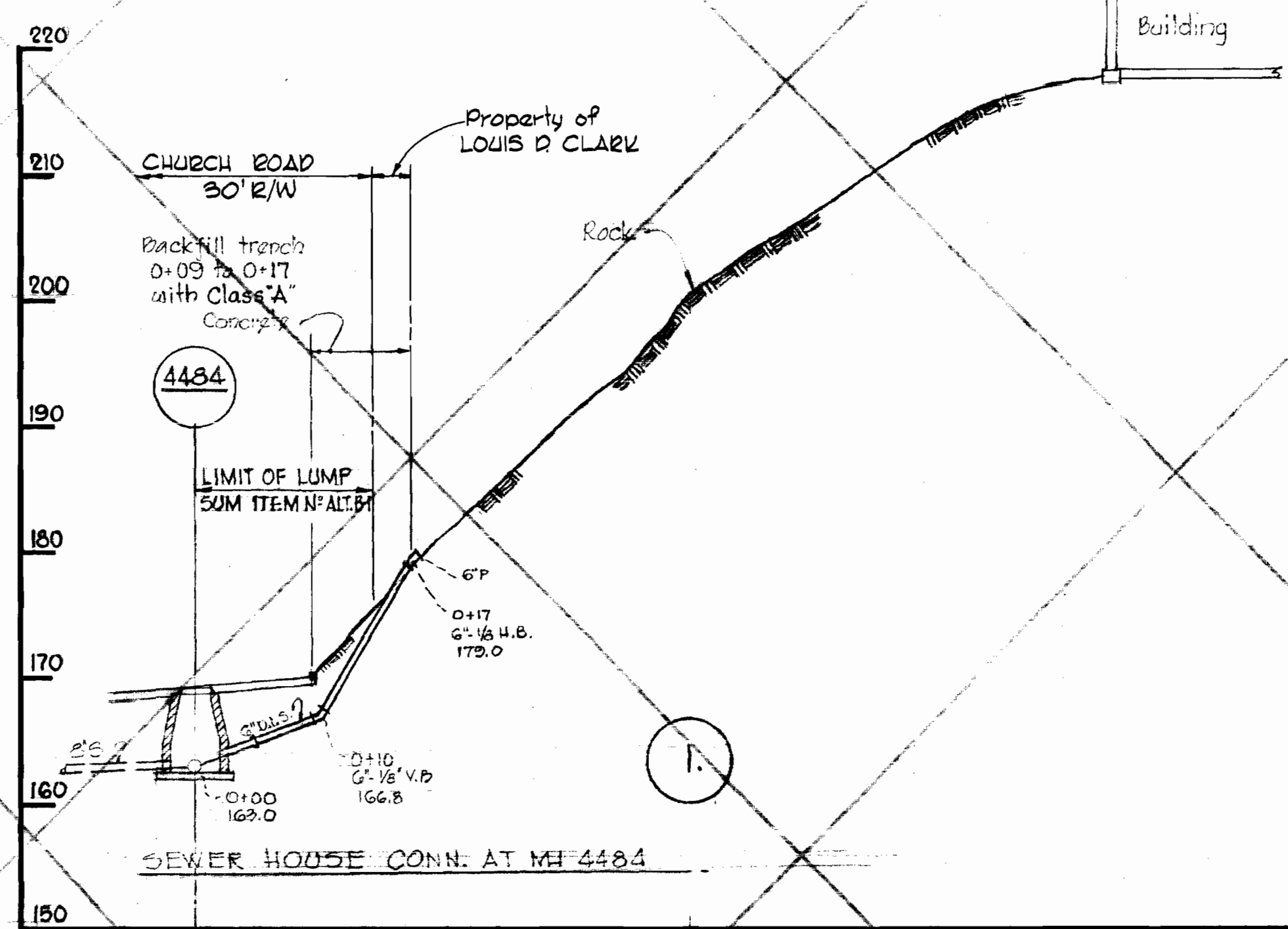
NOTE: Provide pipe joint within 2' of face of long wall.



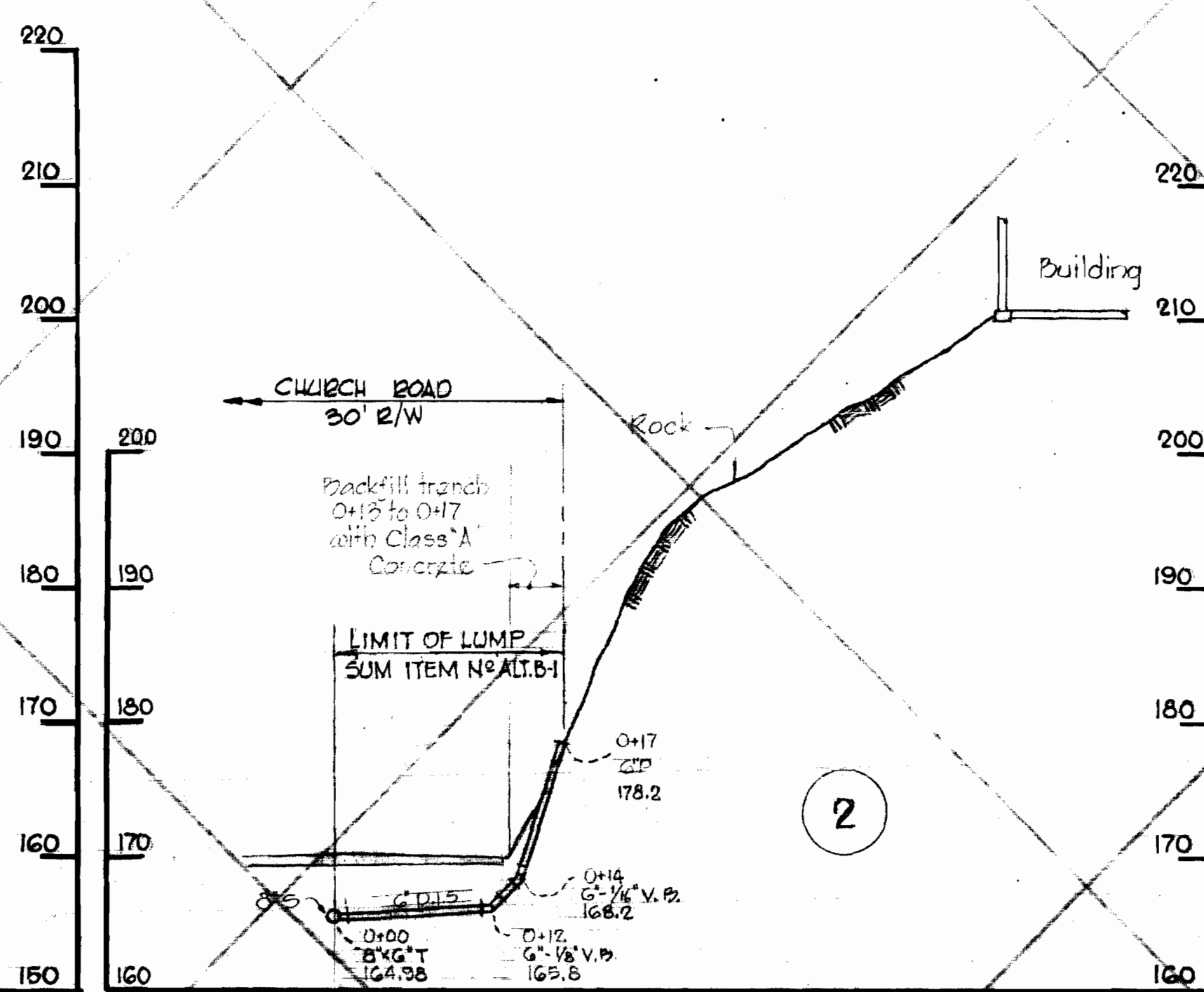
DETAIL OF REPAIRING OPENING THRU WALL

Scale: 1" = 1'-0"

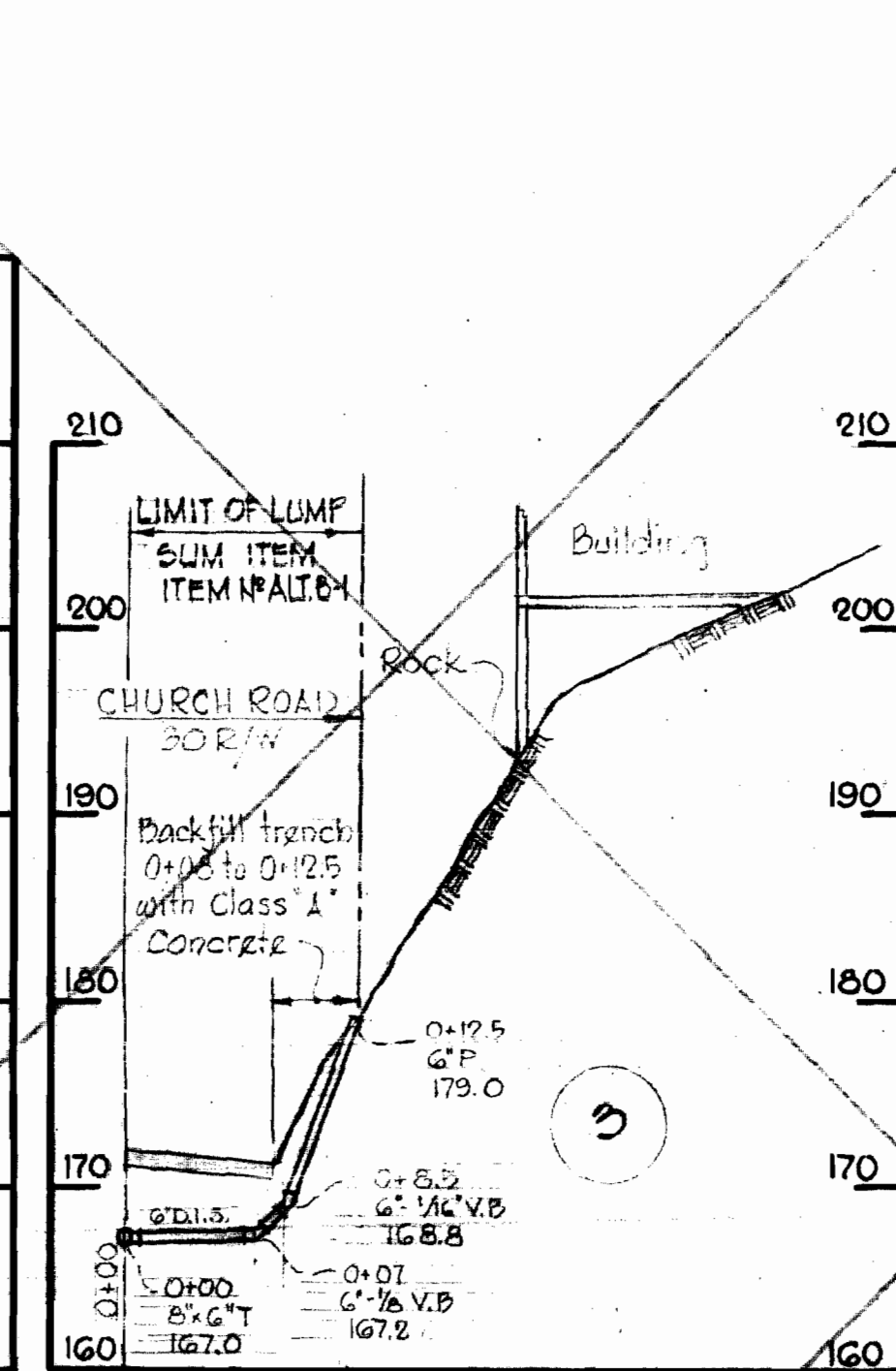
VOID THIS SHEET



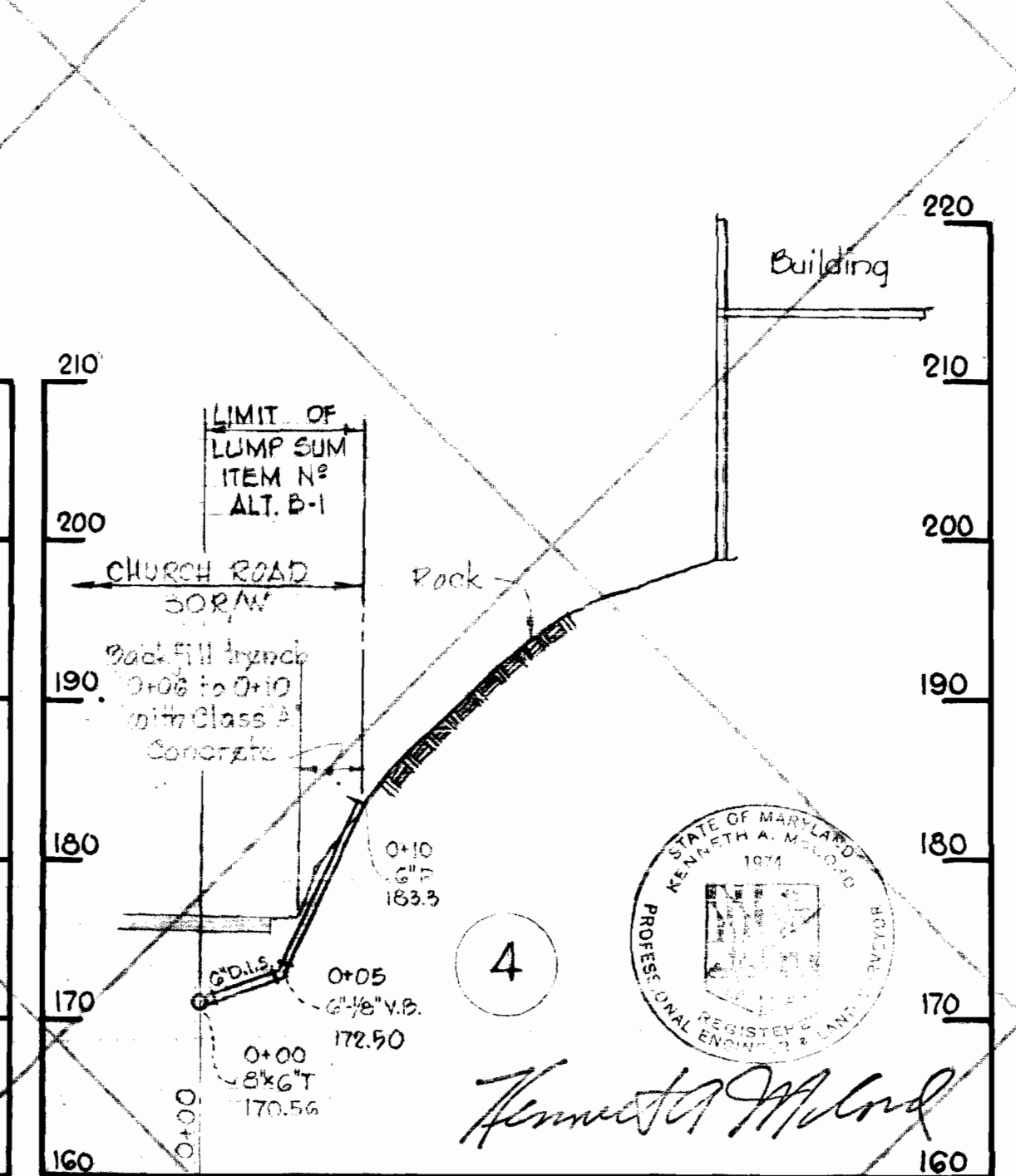
SEWER HOUSE CONN. AT MH 4484



STA. 0+35



STA. 0+67



STA. 1+26

PROFILES OF PROPOSED SEWER HOUSE CONNECTIONS (ALTERNATE ALIGNMENT) - SCALE: 1" = 10' H & V

ELLICOTT CITY, BACK OF COURT AVE. Contract No. 361-5

WHITMAN, REQUARDT & ASSOCIATES
ENGINEERS
1304 ST. PAUL ST.
BALTIMORE, MARYLAND

DEPARTMENT OF PUBLIC WORKS
HOWARD COUNTY, MARYLAND
4-15-70
DATE

CONTRACT NO. 361-S

PROFILES & DETAILS OF SEWER MAINS

ELECTION DISTRICT
ELLICOTT CITY NO. 2

DRAWING NO. 3 OF 3

SCALE AS SHOWN



Kenneth J. McLeod

361-S/3

SUSPENSE

SUSPENSE