

CONTRACT NO C-358 W-S
WATER AND SEWER EXTENSIONS
HOWARD COUNTY MARYLAND
DEPARTMENT OF PUBLIC WORKS

QUANTITIES	
3" Water	5,050'
6" Water	9,600'
8" Water	2,500'
8" Sewer	23,200'
10" Sewer	4,200'
Fire Hydrants	25



Kenneth A. Accord

Stakeout FBs: 4852, 4850, 4851
Dory FB 4853

Village of Longreach
Local 1st Park, Phelps Lunk
Section 1 Area I-B
Contract No. C-358-W-S

WHITMAN, REQUARDT & ASSOCIATES ENGINEERS 1304 ST. PAUL ST. BALTIMORE, MARYLAND	DEPARTMENT OF PUBLIC WORKS HOWARD COUNTY, MARYLAND DATE 10-12-70 <i>W. J. Albert</i> CHIEF-BUREAU OF WATER AND SEWER	CONTRACT NO. C-358W8S	LOCATION MAP	COLUMBIA VILLAGE OF LONGREACH ELECTION DISTRICT GUILFORD No. 6	DRAWING NO. <u>1</u>	SCALE AS SHOWN
					OF <u>17</u>	

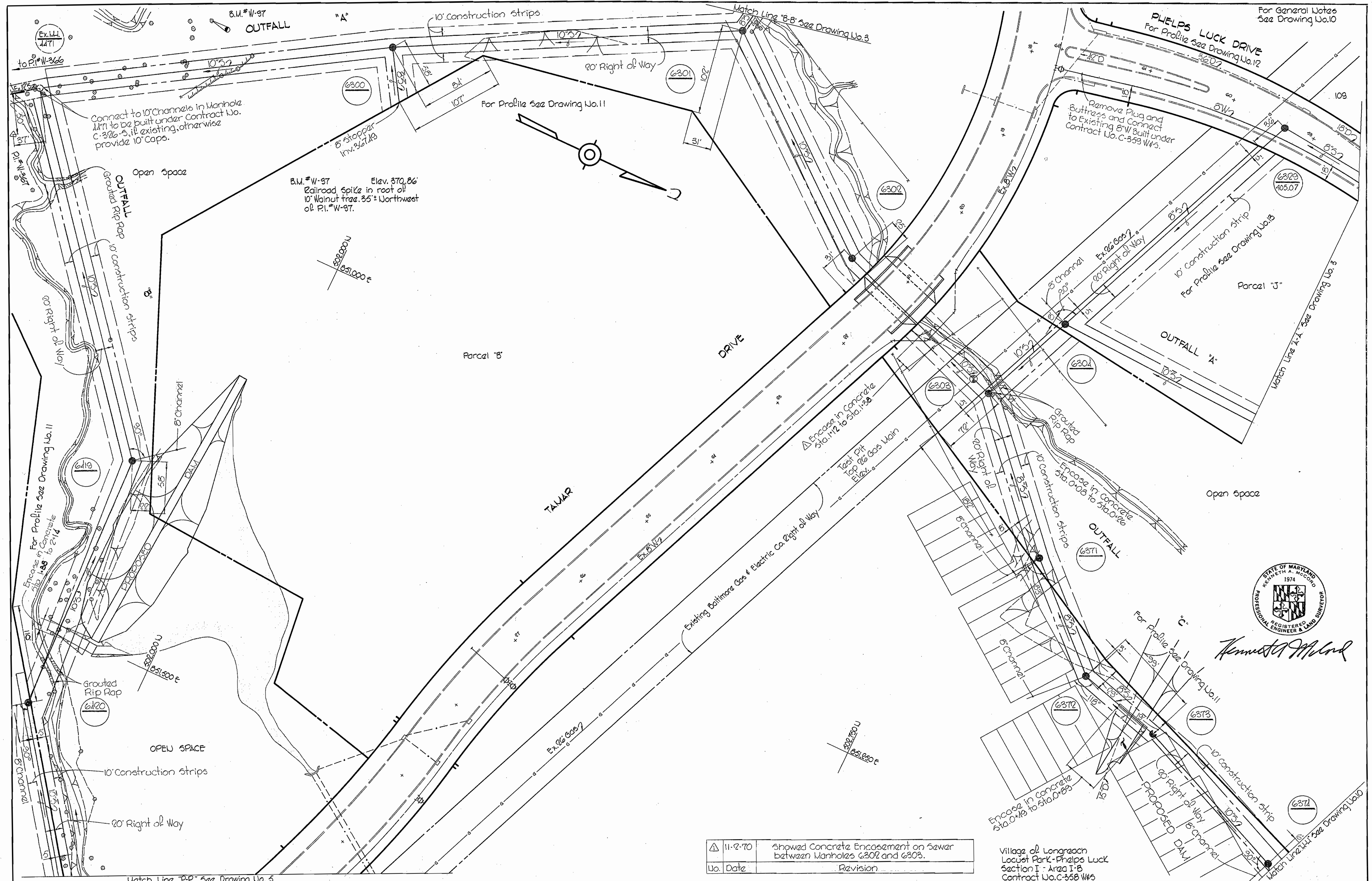
W. O. 6023-2

AS BUILT 7, Oct, 1971

WS 358-W-S/1

SUSQUEHANNA

SUSQUEHANNA



For General Notes See Drawing No. 10

PHELPS LUCK DRIVE
For Profile See Drawing No. 12

For Profile See Drawing No. 11

For Profile See Drawing No. 13

For Profile See Drawing No. 11

For Profile See Drawing No. 10



Kenneth A. McCord

11-2-70	Showed Concrete Encasement on Sewer between Manholes 6302 and 6303.
Uo. Date	Revision

Village of Longreach
Locust Park - Phelps Luck
Section I - Area I-B
Contract No. C-358 W#5

WHITMAN, REQUARDT & ASSOCIATES
ENGINEERS
1304 ST. PAUL ST.
BALTIMORE, MARYLAND

DEPARTMENT OF PUBLIC WORKS
HOWARD COUNTY, MARYLAND
10-12-70
DATE
W. O. Gilbert
CHIEF - BUREAU OF WATER AND SEWER

CONTRACT NO. C-358 W#5

PLAN OF
WATER & SEWER MAINS

COLUMBIA
VILLAGE OF LONGREACH
ELECTION DISTRICT GUILFORD NO. 6

DRAWING NO. 2 OF 17
SCALE 1" = 50'

W. O. 6023-2

AS BUILT Oct 7, 1971

WS 358-W&S/2

COLUMBIA
Village of Longreach
Section 1 Area 1
6th Election District

Perminant plug @
existing 10" sewer
@ this location only

MARGRAVE
MEWS

EX. MH
6375

BM. 'X' cut in F.H. bolt
on Road Side, Elev. 412.60

Build Manhole over and
Connect Ex. 10" S

Note:
Dig test pit @ required locations of
MH 6374-A & MH 6375-A for final grade
check before proceeding with contract
Existing sewer line will remain in service
until the relocated sewer line is operational

Lot No. 451

Ex. 10" S
to be
abandoned

20' Right of
Way

Place 2ft stub
out of MH 6374-A

EX. MH
6374

EX. MH
6688

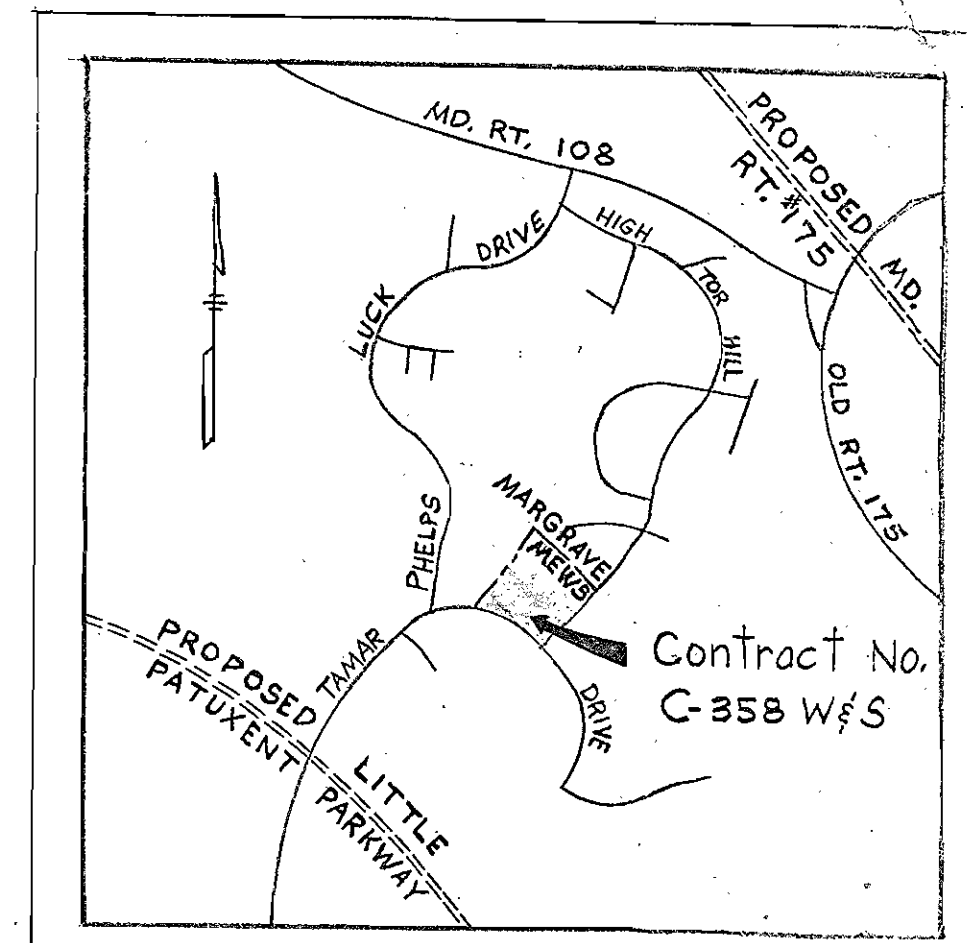
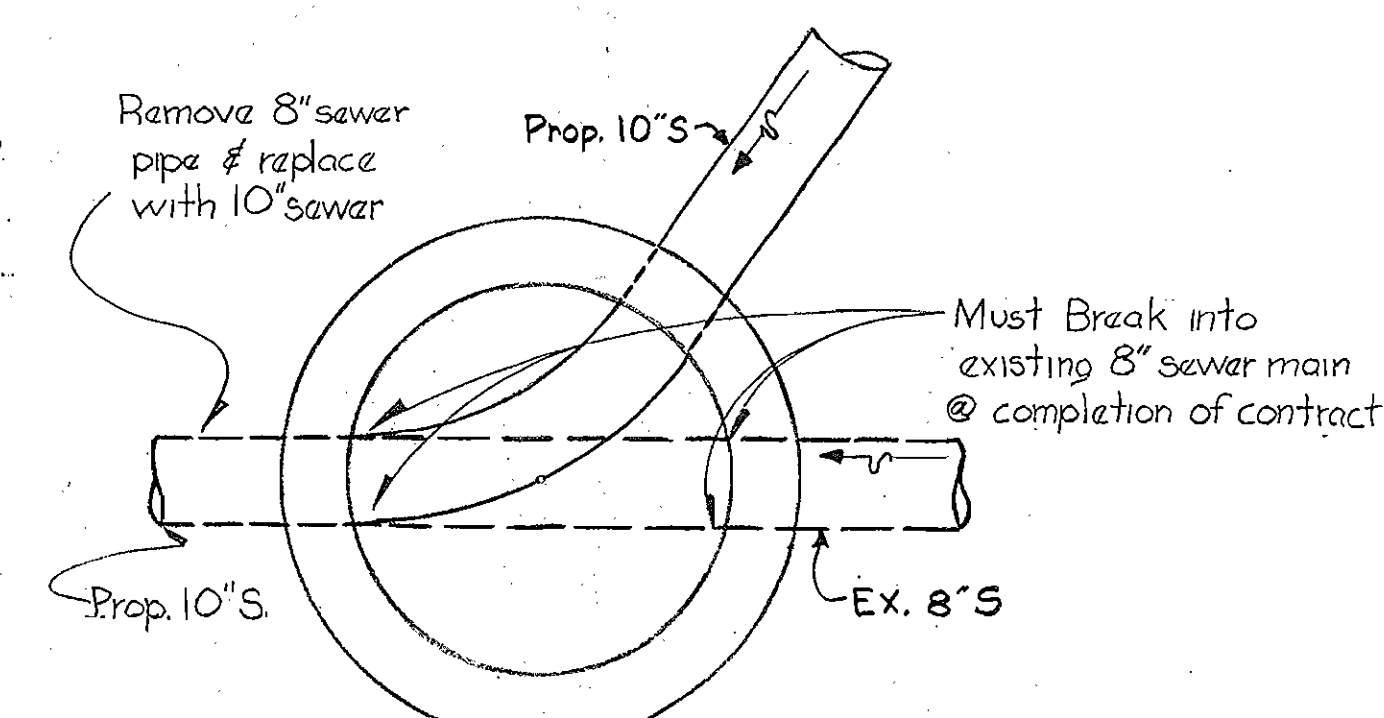
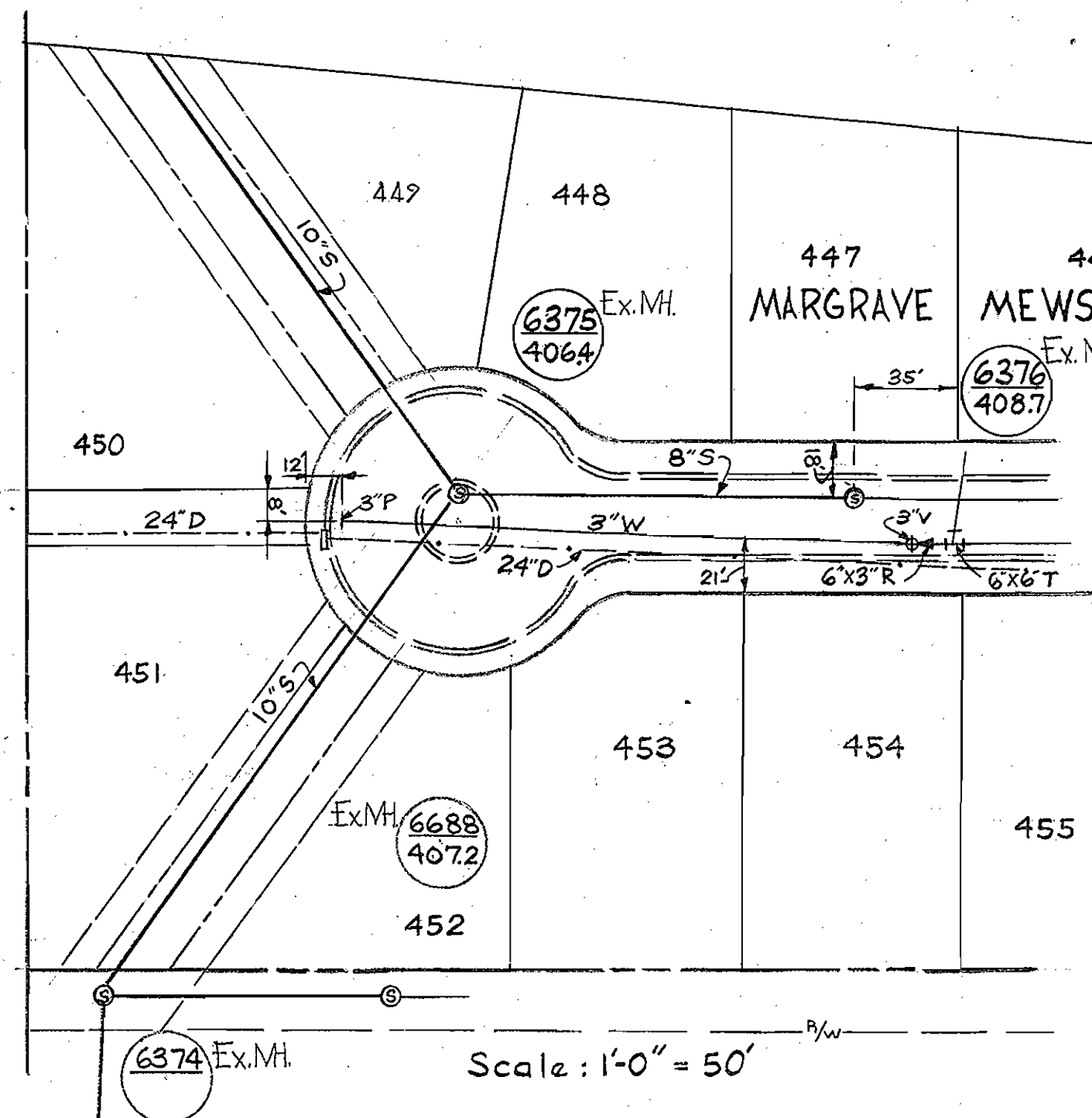
10' Construction Strips

Remove existing
8" sewer pipe & replace
w/ 10" sewer pipe
w/ 2.0' stub out of
both MH's

RELOCATED 10" SEWER

Scale: 1" = 30'

Edge of R/W

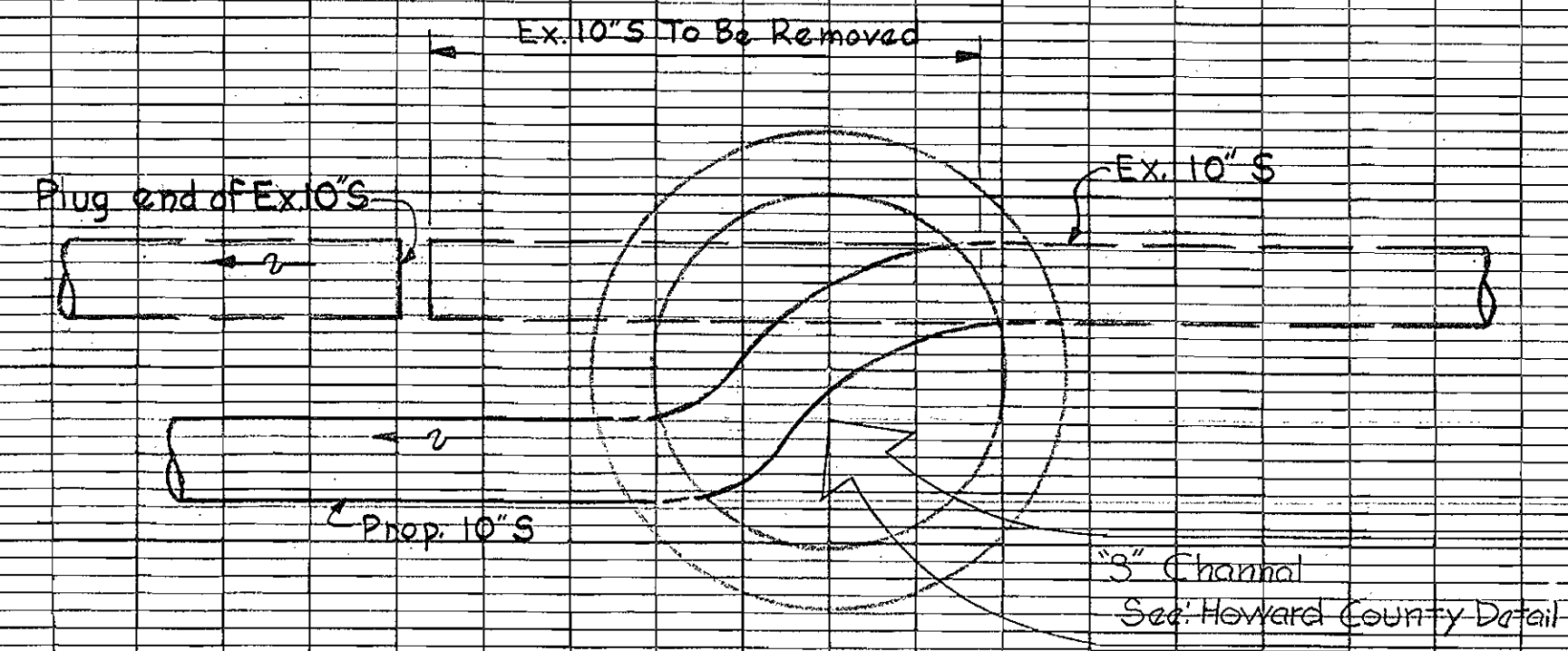
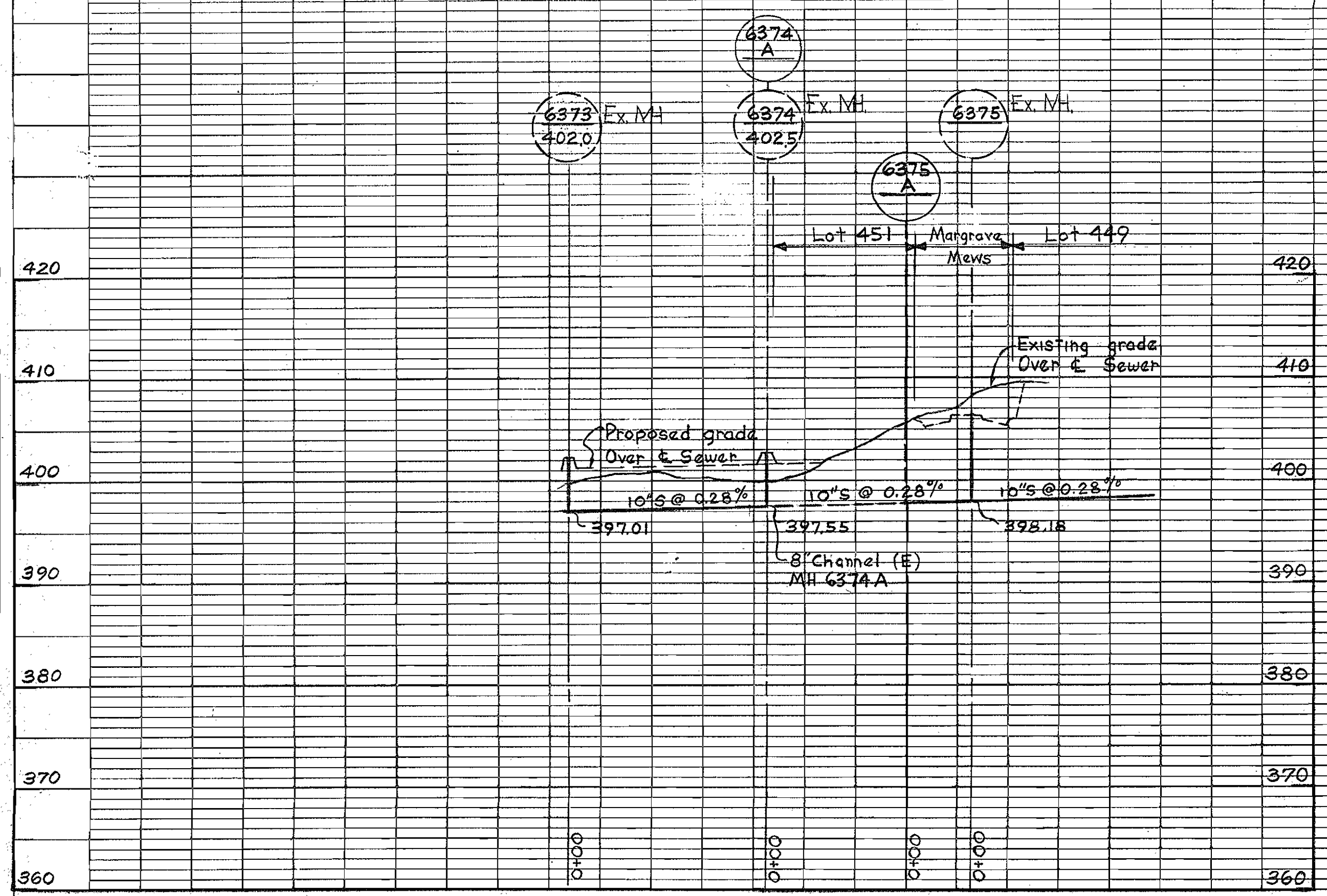


GENERAL NOTES

1. Approximate location of existing mains are shown. The Contractor shall take all necessary precautions to existing mains and service and maintain uninterrupted supply. Any damage incurred shall be repaired immediately.
2. All pipe elevations shown are invert elevations.
3. The Contractor shall locate existing utilities a minimum in advance of construction operations in vicinity of
4. For all standard details see standards bound in
5. Clear all utilities by a minimum of 6" clear all minimum or tunnel as noted, unless otherwise noted
6. The Contractor shall provide a joint in all 2'-0" of exterior manhole walls.
7. All manholes shall be 4'-0" inside diameter.
8. All horizontal & vertical controls are based on MD. State datum.
9. All Sewer Mains shall be Asbestos Cement Pipe Class 2400.

Department of Public Works
Howard County, Maryland
Contract No. 358-S Revision
Lot 451, Margrave Mews
Date: 6-5-1972
SHEET 2-A OF 17

PROFILE



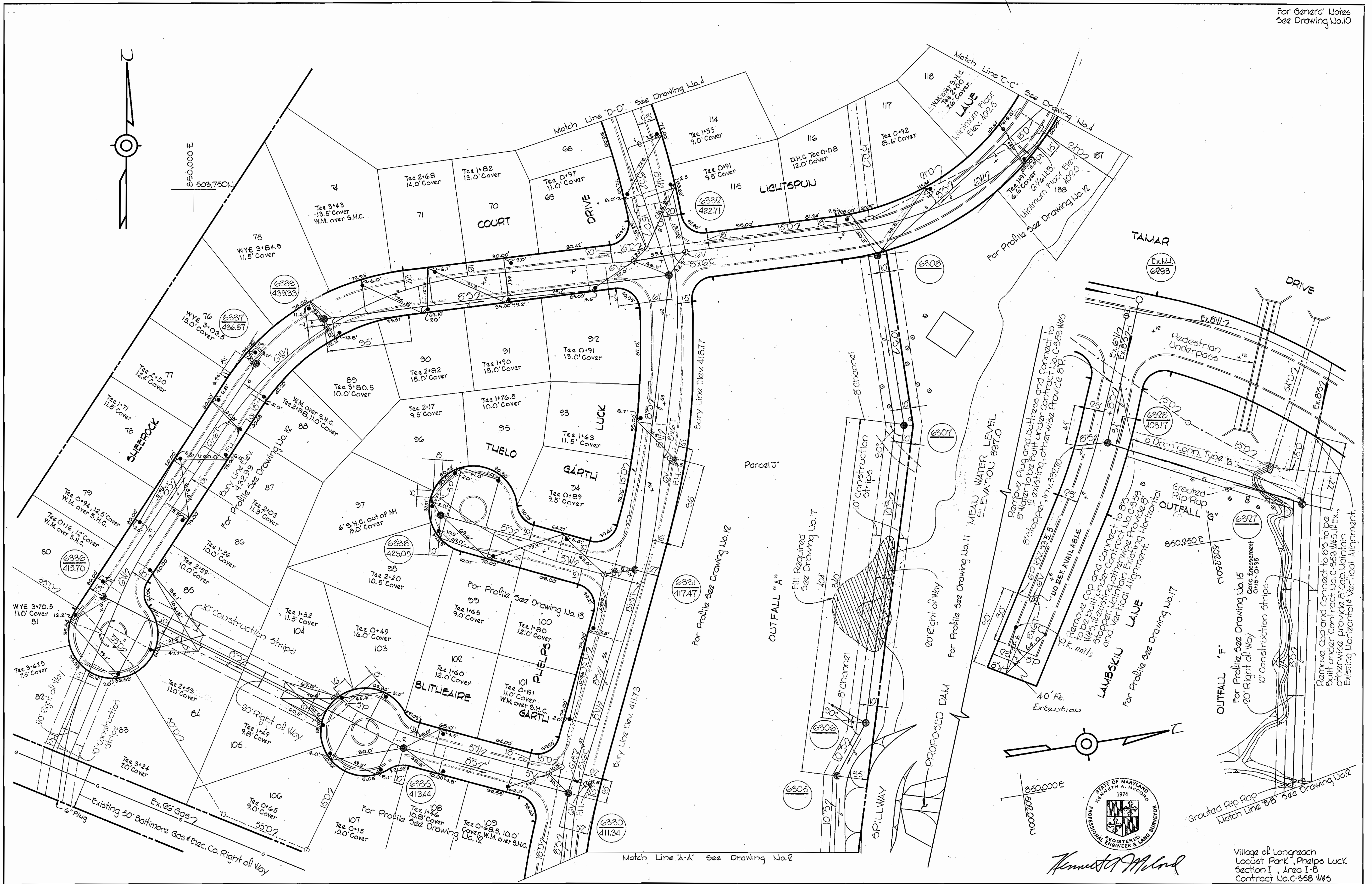
INVERT DETAIL OF MH #6375A

Scale: 1/2" = 1'-0"

DATE	
BY	
SURVEYED	
NOTED	
PLANNED	
NOTED	
PLANNED	
NOTED	
PLANNED	
NO.	

DATE	
BY	
SURVEYED	
NOTED	
PLANNED	
NOTED	
PLANNED	
NO.	

For General Notes
See Drawing No.10



<p>WHITMAN, REQUARDT & ASSOCIATES ENGINEERS 1304 ST. PAUL ST. BALTIMORE, MARYLAND</p>	<p>DEPARTMENT OF PUBLIC WORKS HOWARD COUNTY, MARYLAND 10-12-70 DATE W. O. Pelbert CHIEF - BUREAU OF WATER AND SEWER</p>	<p>CONTRACT NO. C-358 W&S</p>	<p>PLAN OF WATER & SEWER MAINS</p>	<p>COLUMBIA VILLAGE OF LONGREACH ELECTION DISTRICT GUILFORD NO. 6</p>	<p>DRAWING NO. 3 OF 17 SCALE 1" = 50' 503-487</p>
---	---	-----------------------------------	--	---	---

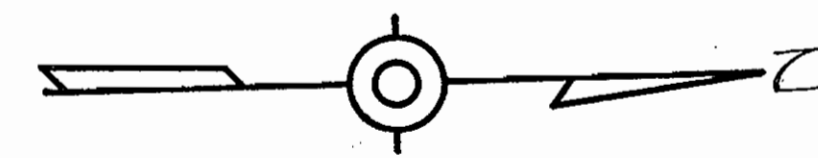
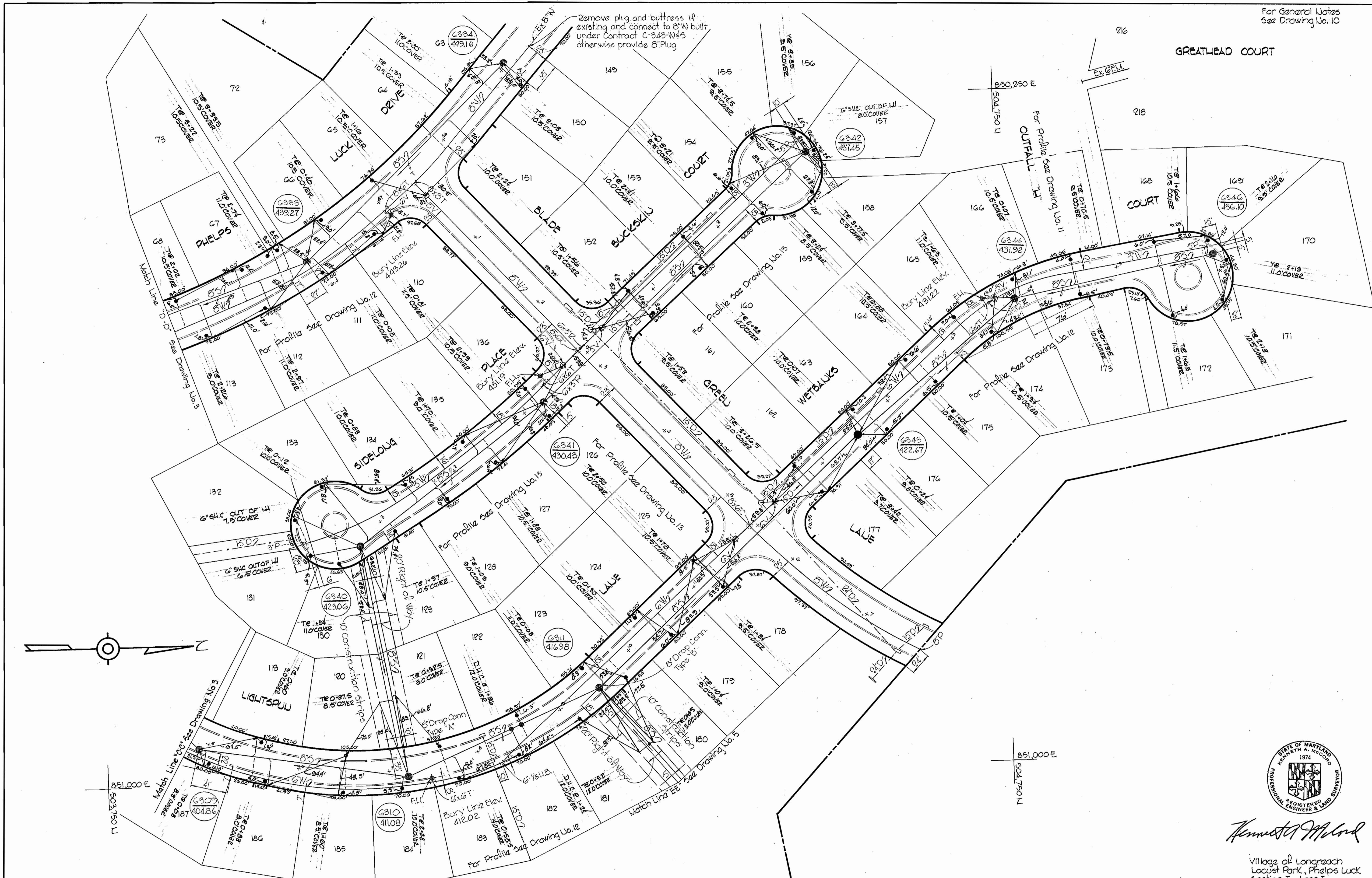
W. O. 6023-2

AS BUILT
7-9-74
Oct 7, 1971

WS 358-W45/3

For General Notes
See Drawing No. 10

GREATHEAD COURT



Kenneth A. McLeod

Village of Longreach
Locust Park, Phelps Luck
Section I, Area I
Contract No. C-358 W85

WHITMAN, REQUARDT & ASSOCIATES
ENGINEERS
1304 ST. PAUL ST.
BALTIMORE, MARYLAND

DEPARTMENT OF PUBLIC WORKS
HOWARD COUNTY, MARYLAND
10-17-70
DATE

CONTRACT NO. C-358W85

PLAN OF
WATER & SEWER MAINS

COLUMBIA
VILLAGE OF LONGREACH
ELECTION DISTRICT GUILFORD NO. 6

DRAWING
NO. 4
OF 17

SCALE
1"=50'

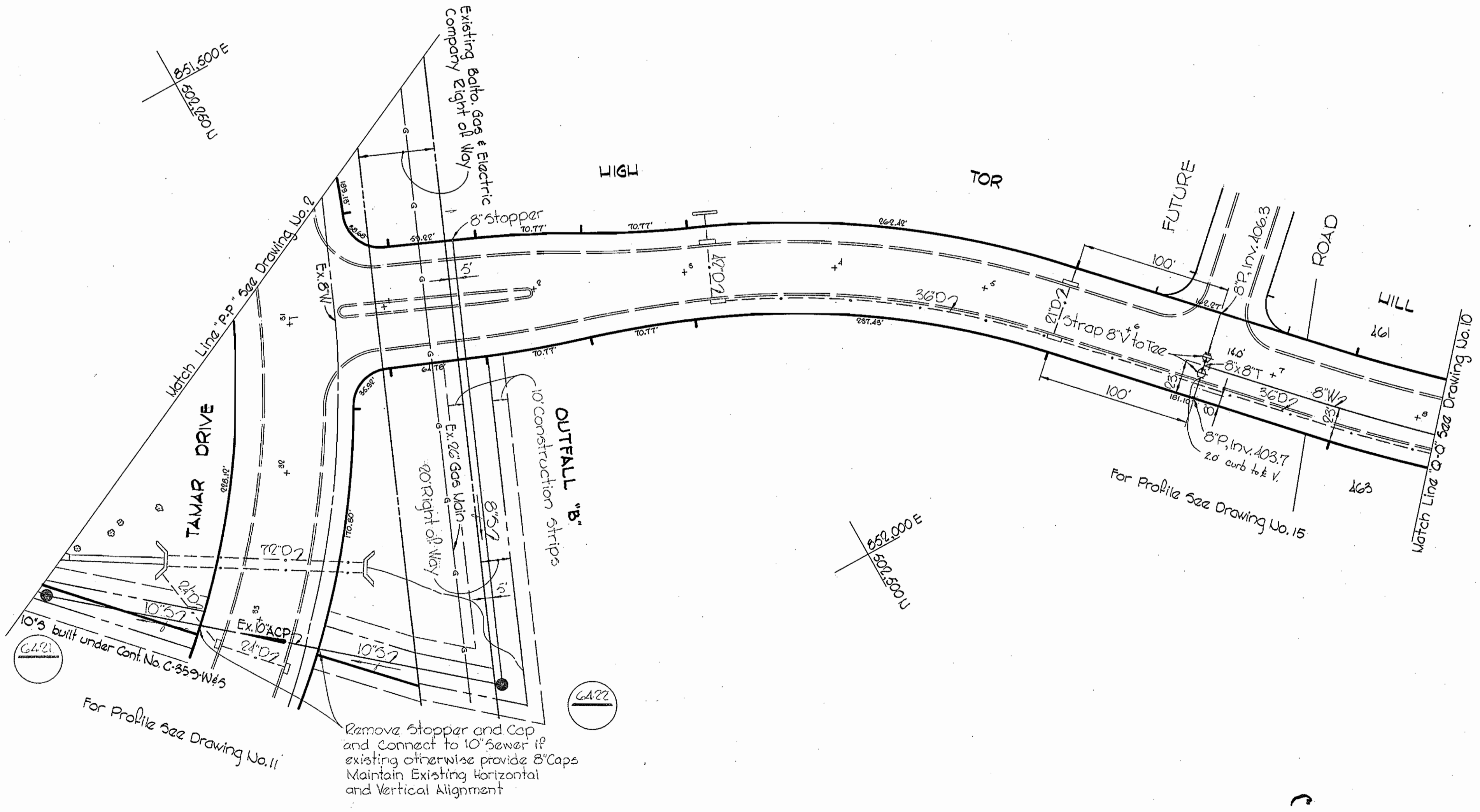
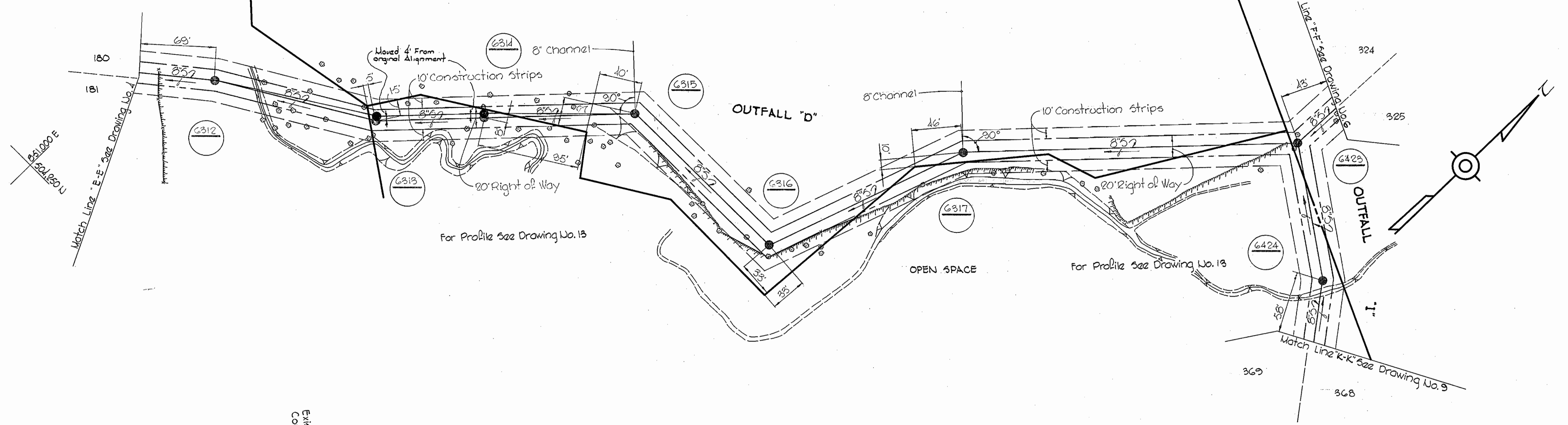
W. O. 6023-2

BUILT Oct 7, 1971

WS 358-W85/4

NOTE:
Do not cut any trees within the right of way between manholes G312 & G314

For General Notes
See Drawing No. 10



Kenneth A. McCord

Village of Longreach
Locust Park - Phelps Luck
Section I - Area I
Contract No. C-358 W85

WHITMAN, REQUARDT & ASSOCIATES ENGINEERS 1304 ST. PAUL ST. BALTIMORE, MARYLAND	DEPARTMENT OF PUBLIC WORKS HOWARD COUNTY, MARYLAND 10-12-70 <i>W. O. Falbert</i> CHIEF - BUREAU OF WATER AND SEWER	CONTRACT NO. C-358 W85	PLAN OF WATER & SEWER MAINS	COLUMBIA VILLAGE OF LONGREACH ELECTION DISTRICT GUILFORD NO. 6	DRAWING NO. 5 OF 17 SCALE 1"=50' 501-48T 505-48T 501-48T 502-48T
--	---	-------------------------------	--	---	---

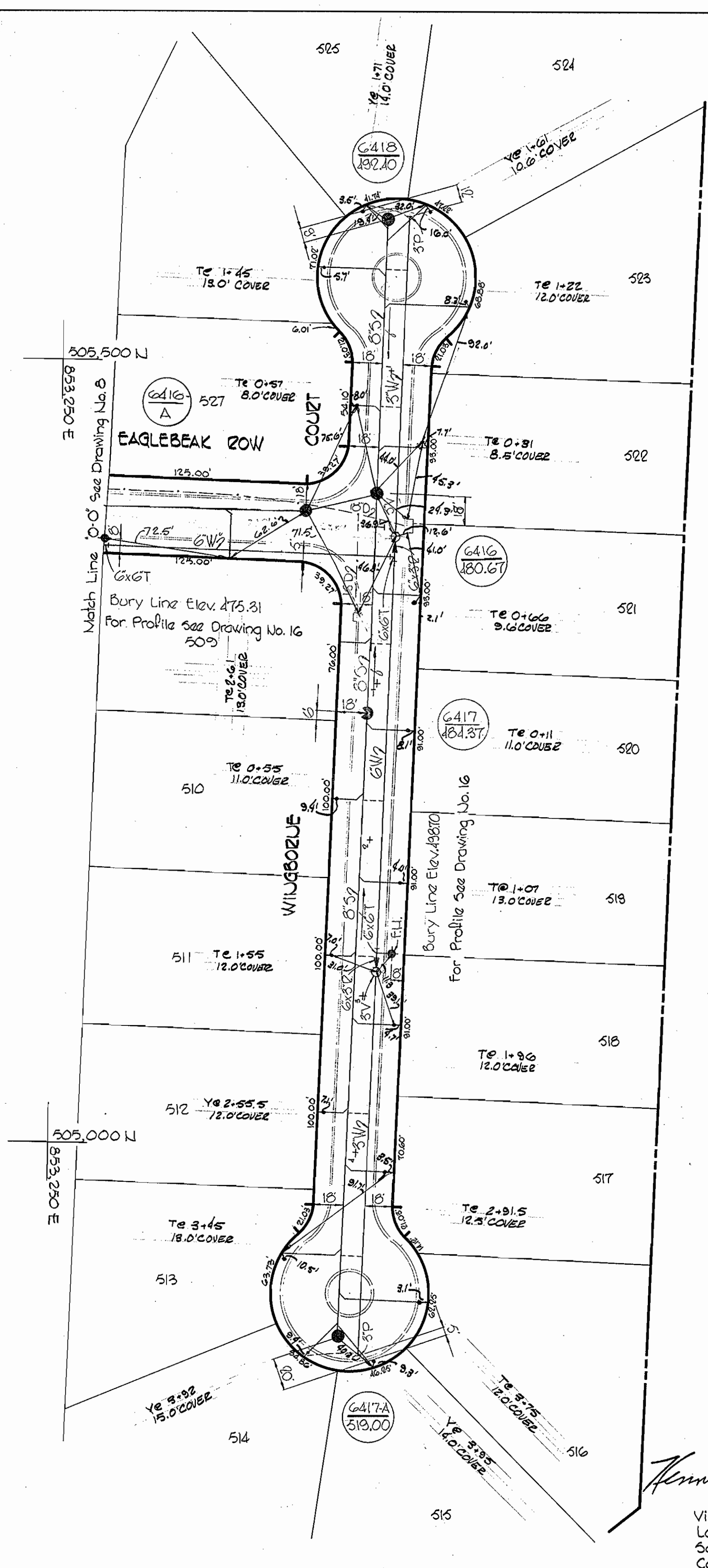
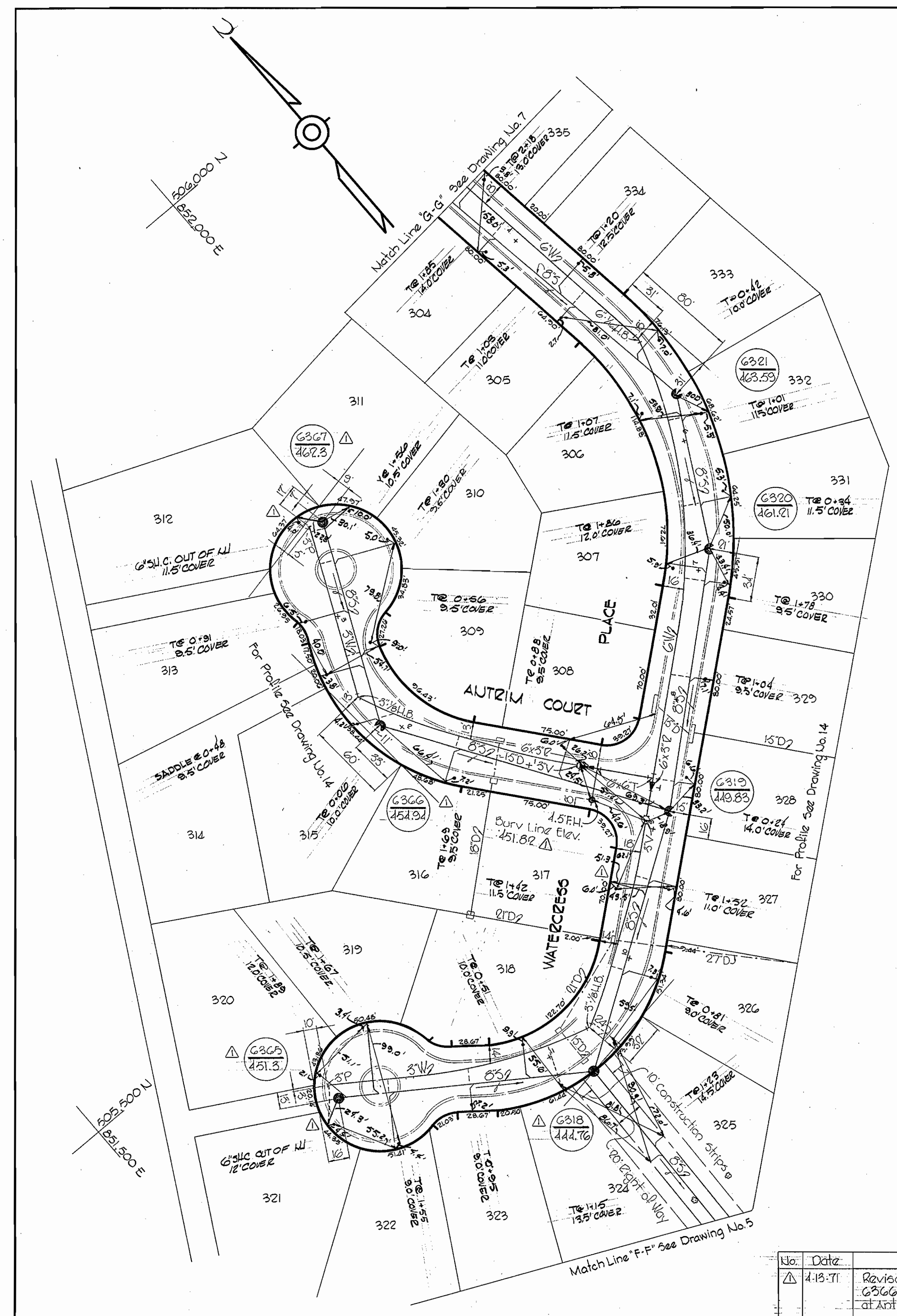
W. O. 6023-2

AS BUILT

Oct 7, 1971

F.B.# 4609, 4623

WS 358-W85/5



No.	Date	Revision
1	4-13-71	Revised Rim Elevations at Manholes G367, G368, G369 and G388. Revised Bury Line Elev. at Antrim Court. Revised S.H.C.'s and W.H.C.'s.

WHITMAN, REQUARDT & ASSOCIATES
ENGINEERS
1304 ST. PAUL ST.
BALTIMORE, MARYLAND

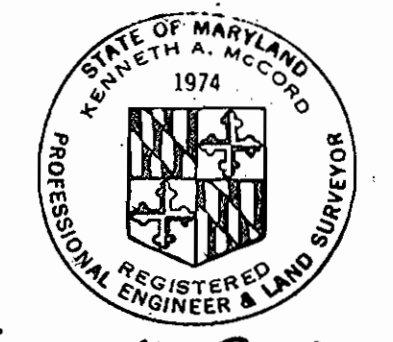
DEPARTMENT OF PUBLIC WORKS
HOWARD COUNTY, MARYLAND
10-12-70
DATE
W. O. Webb
CHIEF - BUREAU OF WATER AND SEWER

CONTRACT NO. C-358 W&S

PLAN OF
WATER & SEWER MAINS

COLUMBIA
VILLAGE OF LONGREACH
ELECTION DISTRICT GUILFORD NO. 6

DRAWING NO. 6 OF 17
SCALE 1" = 50'



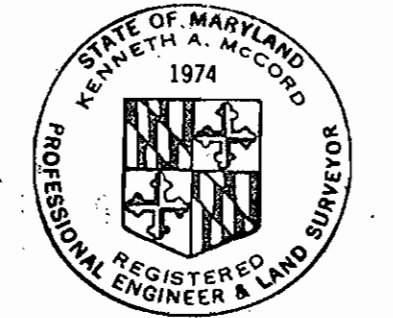
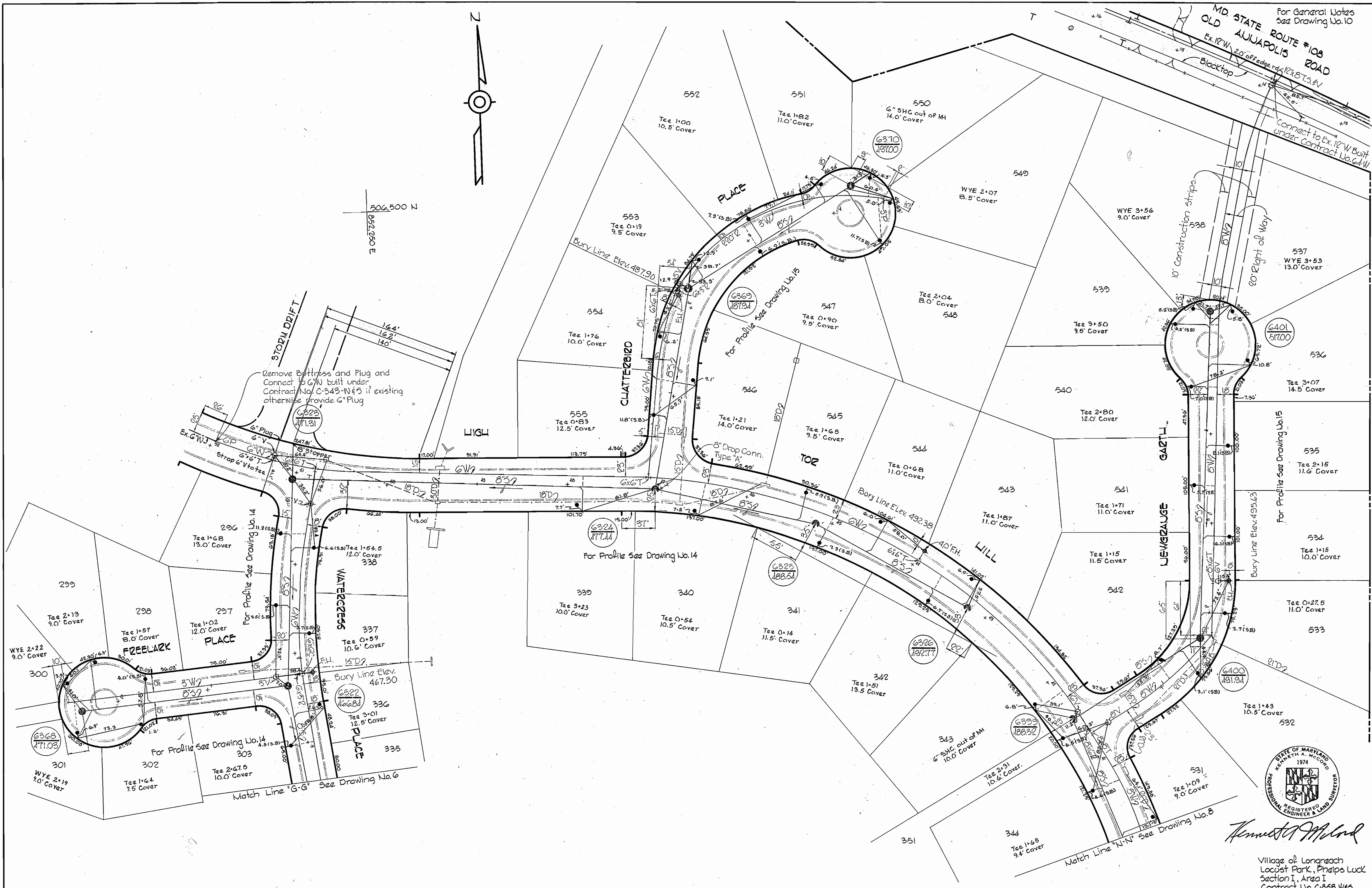
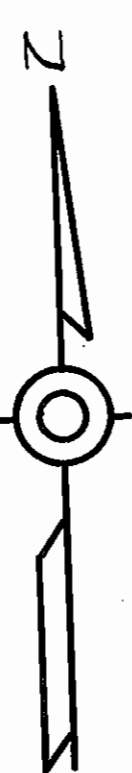
Kenneth A. McCord
Village of Longreach
Locust Park, Phelps Luck
Section I, Area I-B
Contract No. C-358 W&S

13, APRIL 1971

WS 358-W&S/6

For General Notes See Drawing No. 10

MD. STATE ROUTE #108
OLD ANJAPOLIS ROAD



Kenneth A. McLeod

Village of Longbeach
Locust Park, Phalps Luck
Section I, Area I
Contract No. C-358 W&S

WS 358-W&S/7

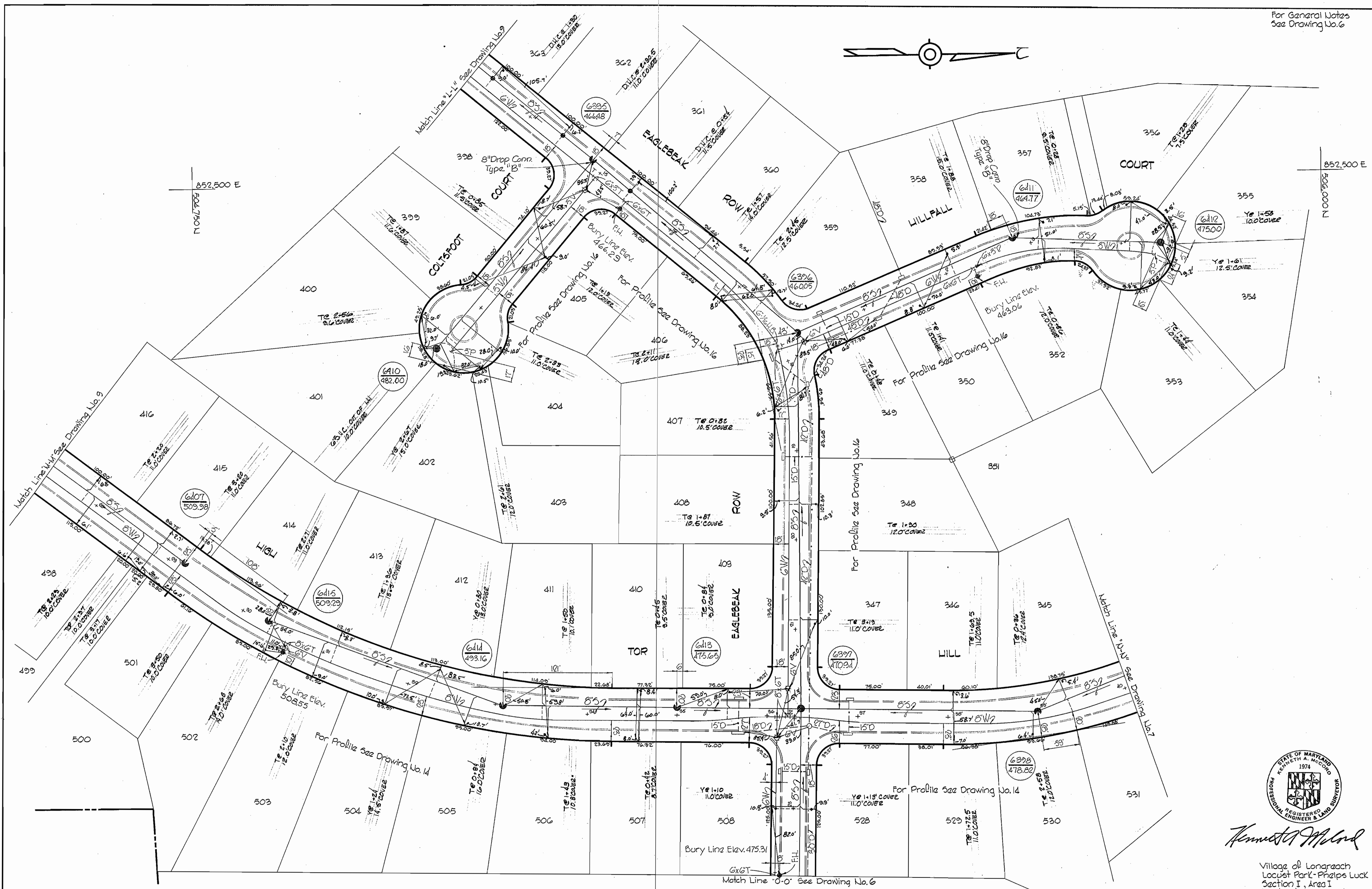
<p>WHITMAN, REQUARDT & ASSOCIATES ENGINEERS 1304 ST. PAUL ST. BALTIMORE, MARYLAND</p>	<p>DEPARTMENT OF PUBLIC WORKS HOWARD COUNTY, MARYLAND 10-12-70 DATE <i>W. O. Feltner</i> CHIEF-BUREAU OF WATER AND SEWER</p>	<p>CONTRACT NO. C-358 W&S</p>	<p>PLAN OF WATER & SEWER MAINS</p>	<p>COLUMBIA VILLAGE OF LONGBEACH ELECTION DISTRICT GUILFORD NO. 6</p>	<p>DRAWING NO. 7 OF 17 SCALE 1" = 50'</p>
---	--	-----------------------------------	--	---	---

W. O. 6023-2

AS BUILT

Oct 11, 1971

For General Notes See Drawing No. 6



Kenneth A. Accord

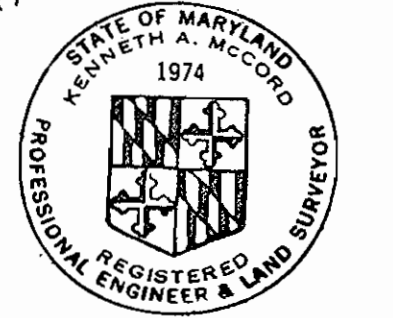
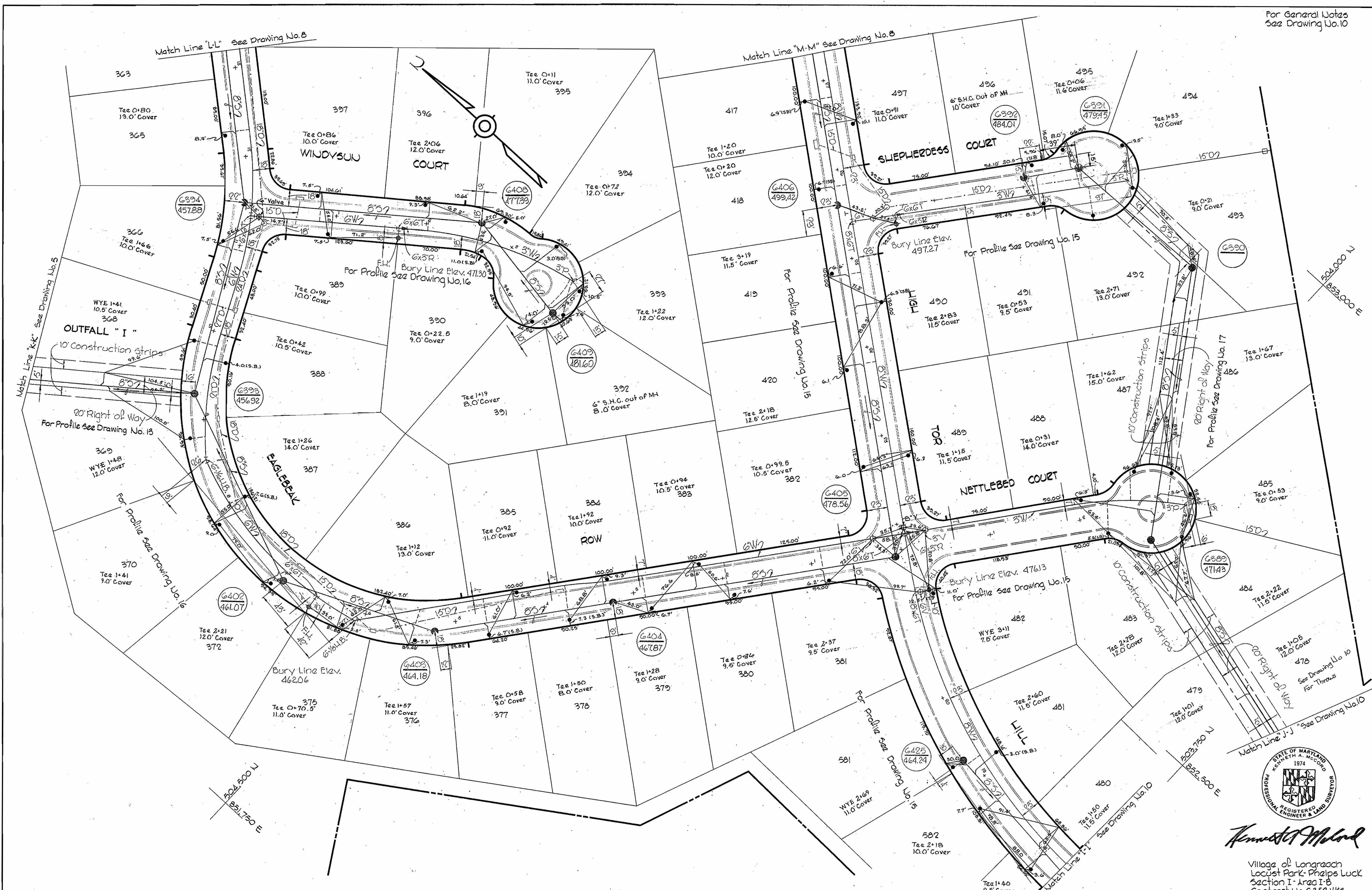
Village of Longreach
Locust Park - Phelps Luck
Section I, Area I
Contract No. C-358 W85

WHITMAN, REQUARDT & ASSOCIATES ENGINEERS 1304 ST. PAUL ST. BALTIMORE, MARYLAND	DEPARTMENT OF PUBLIC WORKS HOWARD COUNTY, MARYLAND 10-12-70 DATE <i>W. O. Gortz</i> CHIEF - BUREAU OF WATER AND SEWER	CONTRACT NO. C-358W85	PLAN OF WATER & SEWER MAINS	COLUMBIA VILLAGE OF LONGREACH ELECTION DISTRICT GUILFORD NO. 6	DRAWING NO. 8 OF 17 SCALE 1" = 50' AS BUILT Oct 11, 1971
---	--	-----------------------	--------------------------------	--	--

W. O. GORTZ-2

WS 358-W85/8

For General Notes
See Drawing No. 10



Kenneth A. McLeod
 REGISTERED PROFESSIONAL ENGINEER & LAND SURVEYOR

Village of Longreach
 Locust Park-Phelps Luck
 Section I - Area I-B
 Contract No. C-358 W86

WHITMAN, REQUARDT & ASSOCIATES ENGINEERS 1304 ST. PAUL ST. BALTIMORE, MARYLAND	DEPARTMENT OF PUBLIC WORKS HOWARD COUNTY, MARYLAND DATE 10-12-70 <i>W. O. Falbert</i> CHIEF-BUREAU OF WATER AND SEWER	CONTRACT NO. C-358W8S	PLAN OF WATER & SEWER MAINS	COLUMBIA VILLAGE OF LONGREACH ELECTION DISTRICT GUILFORD NO. 6	DRAWING NO. 9 OF 17 SCALE 1" = 50'
---	---	-----------------------	--------------------------------	--	---------------------------------------

W. O. 6023-2

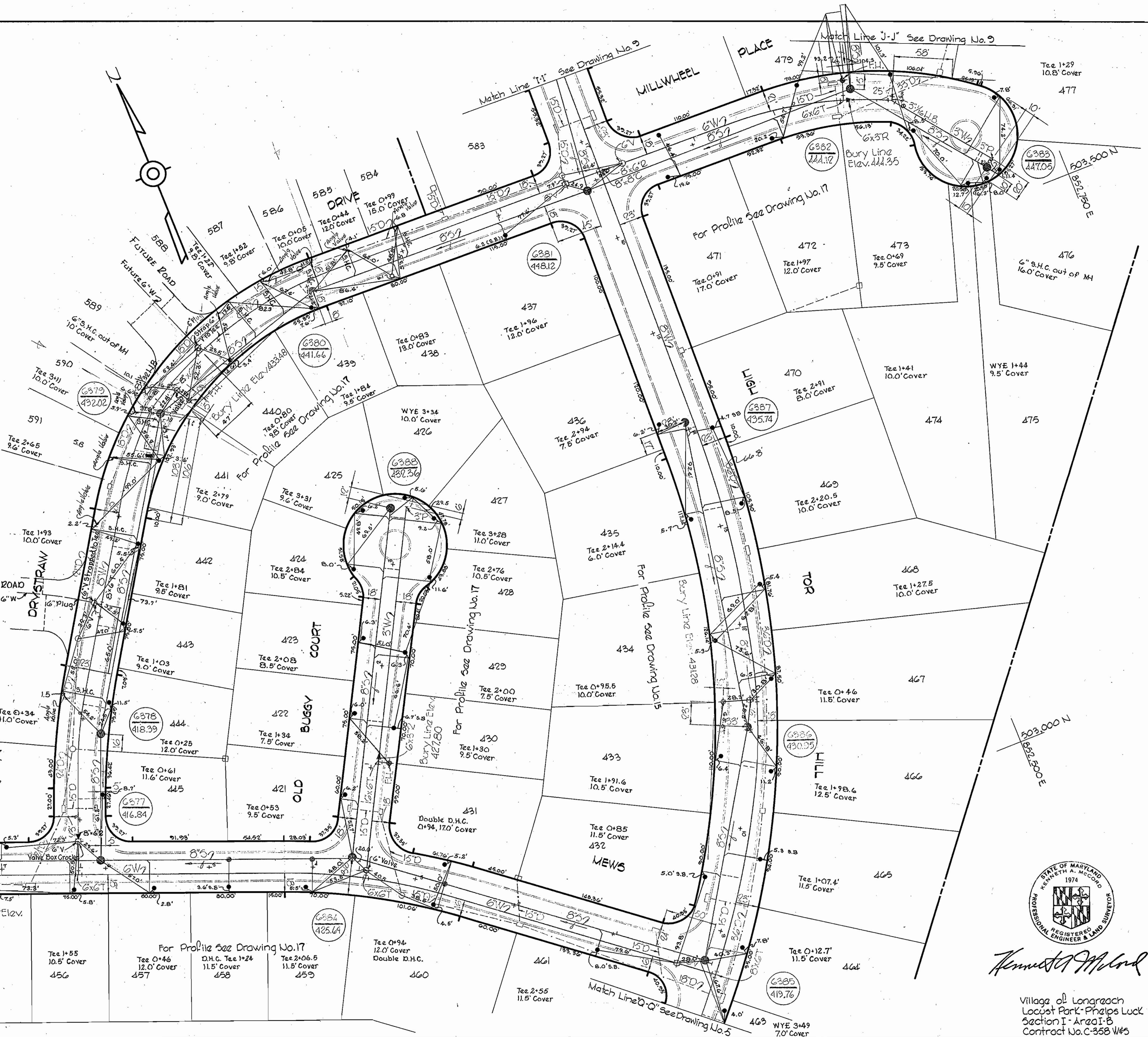
AS BUILT

Oct 11, 1971

WS 358-W&S/9

GENERAL NOTES

1. Approximate location of existing mains are shown. The Contractor shall take all necessary precautions to protect existing mains and services and maintain uninterrupted supply. Any damage incurred shall be repaired immediately.
2. All pipe elevations shown are invert elevations.
3. The Contractor shall locate existing utilities a minimum of two weeks in advance of construction operations in vicinity of utilities.
4. For all standard details see standards bound in Specifications.
5. All horizontal and vertical controls are based on Maryland State Datum.
6. Clear all utilities by a minimum of 6'; Clear all poles by a minimum of 2'-0" or tunnel as required.
7. All water mains to have a minimum of 3 1/2' cover.
8. Block all fittings with concrete, see standards bound in Specifications.
9. All fire hydrants shall be strapped and buttressed in accordance with Standard Details.
10. Cost of strapping fire hydrants and valves to tees to be included in unit price bid for furnishing and laying of water mains.
11. Bury Line elevations on fire hydrants shall be set to elevations shown on drawings or as directed by the Engineer in the field.
12. All sewer pipe to be V.C.P.X., C.S.P.X. or A.C.R. Class 800 unless otherwise noted.
13. All manholes shall be 4'-0" inside diameter.
14. The Contractor shall provide a joint in all sewer mains within 2'-0" of exterior manhole walls.
15. 12" manhole walls pertain to brick manholes only.



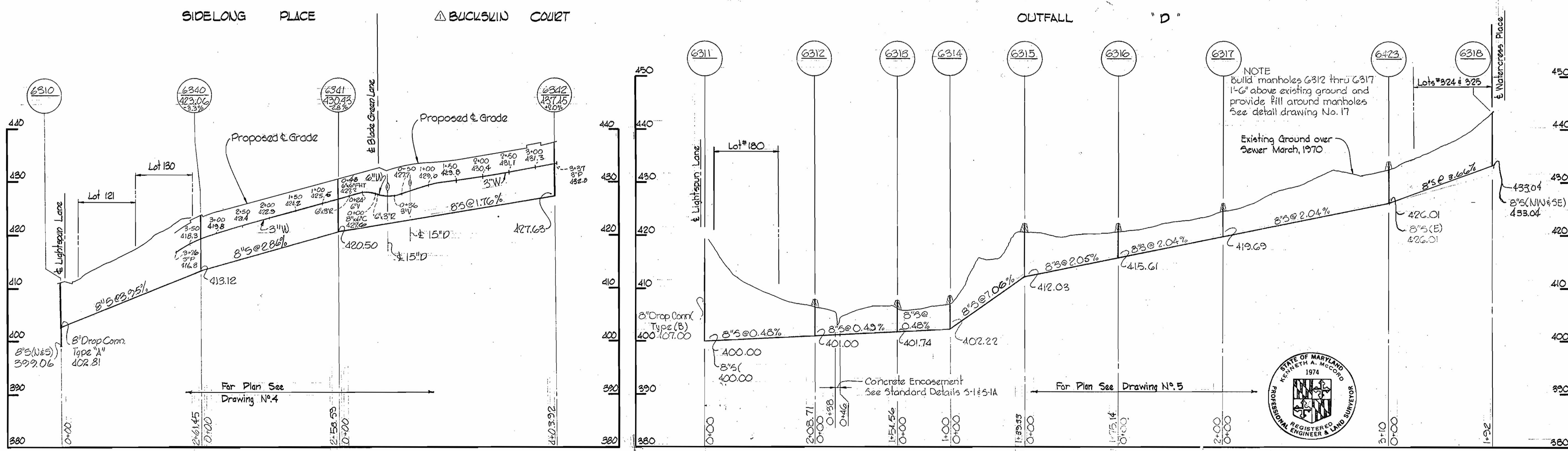
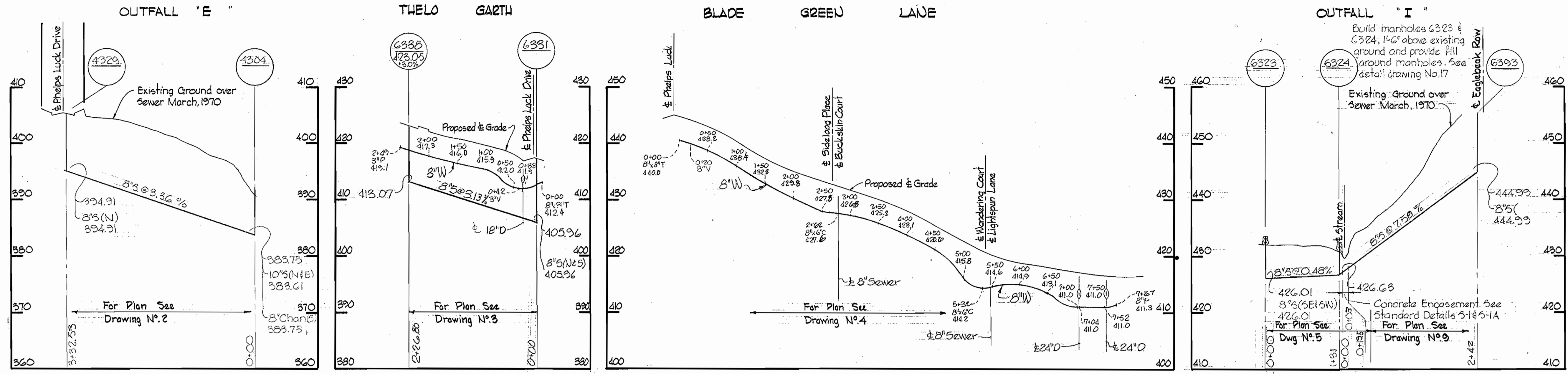
Kenneth A. McLeod
 Village of Longreach
 Locust Park - Phelps Luck
 Section I - Area I-B
 Contract No. C-358 W85

WHITMAN, REQUARDT & ASSOCIATES ENGINEERS 1304 ST. PAUL ST. BALTIMORE, MARYLAND	DEPARTMENT OF PUBLIC WORKS HOWARD COUNTY, MARYLAND 10-12-70 DATE <i>W. O. Gertz</i> CHIEF - BUREAU OF WATER AND SEWER	CONTRACT NO. C-358 W85	PLAN OF WATER & SEWER MAINS	COLUMBIA VILLAGE OF LONGREACH ELECTION DISTRICT GUILFORD NO. 6	DRAWING NO. 10	SCALE 1" = 50'
					OF 17	NO. 6

W. O. G023-2

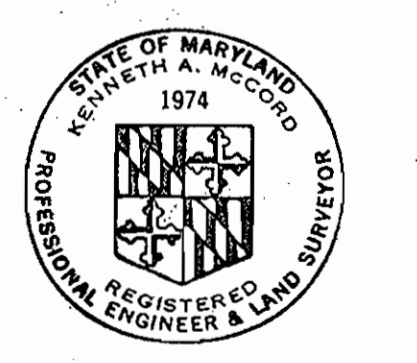
AS BUILT Oct 11, 1971

WS 358-w&s/10



Sewer Pipe - A.C. Class 2400
Water Pipe - Cast Iron

NOTE
Build manholes 6312 thru 6317
1'-6" above existing ground and
provide fill around manholes
See detail drawing No. 17



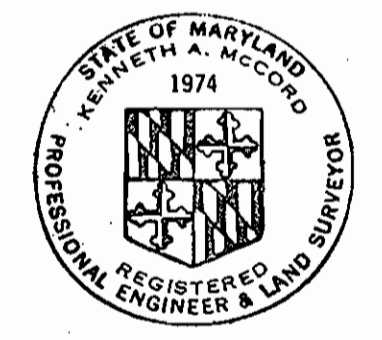
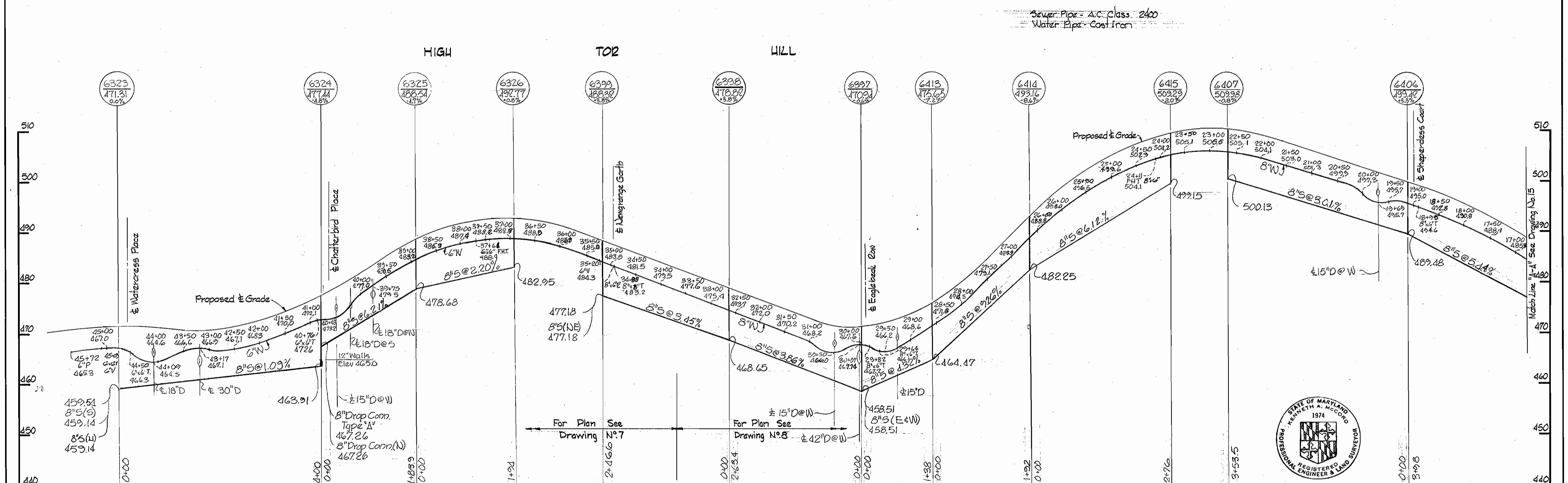
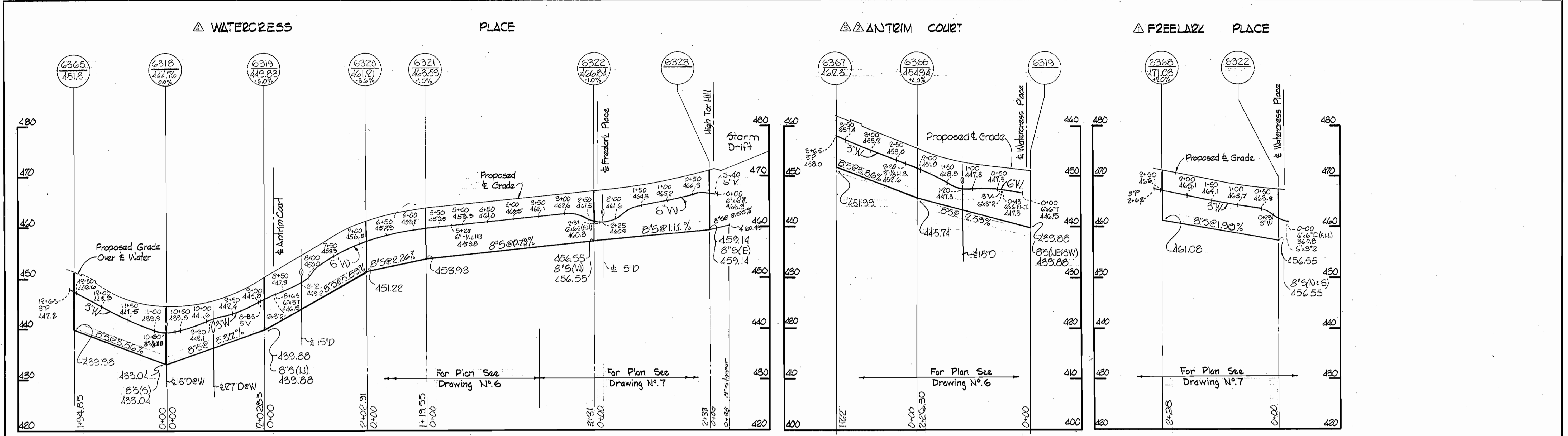
No.	Date	Revision
1	11-2-70	Revised Water and Sewer Profile, Buckskin Court.

Kenneth A. McLeod

Village of Longreach
Locust Park, Phelps Luck
Section 1 Area I-B
Contract No. C-358-W#5

WHITMAN, REQUARDT & ASSOCIATES ENGINEERS 1304 ST. PAUL ST. BALTIMORE, MARYLAND	DEPARTMENT OF PUBLIC WORKS HOWARD COUNTY, MARYLAND 10-12-70 DATE	CONTRACT NO. C-358 W&S W. O. Falbert CHIEF-BUREAU OF WATER AND SEWER	PROFILES OF WATER & SEWER MAINS	COLUMBIA VILLAGE OF LONGREACH ELECTION DISTRICT GUILFORD NO. 6	DRAWING NO. 13 OF 17	SCALE H: 1"=100' V: 1"=10'
					W. O. 6023-2	AV UNIT Oct 11, 1971

WS 358-W&S/13



4-13-71	Revised Water and Sewer Profile, Antrim Court.	11-2-70	Revised Water & Sewer Profile, Antrim Court.
4-13-71	Revised Water Profile between Sta. 3+00 and Sta. 12+65.	11-2-70	Revised Water & Sewer Profile, Freelark Place.
	Revised Sewer Profile between Sta. 6320 and 6325 on Watercross Place.	No. Date	Revision

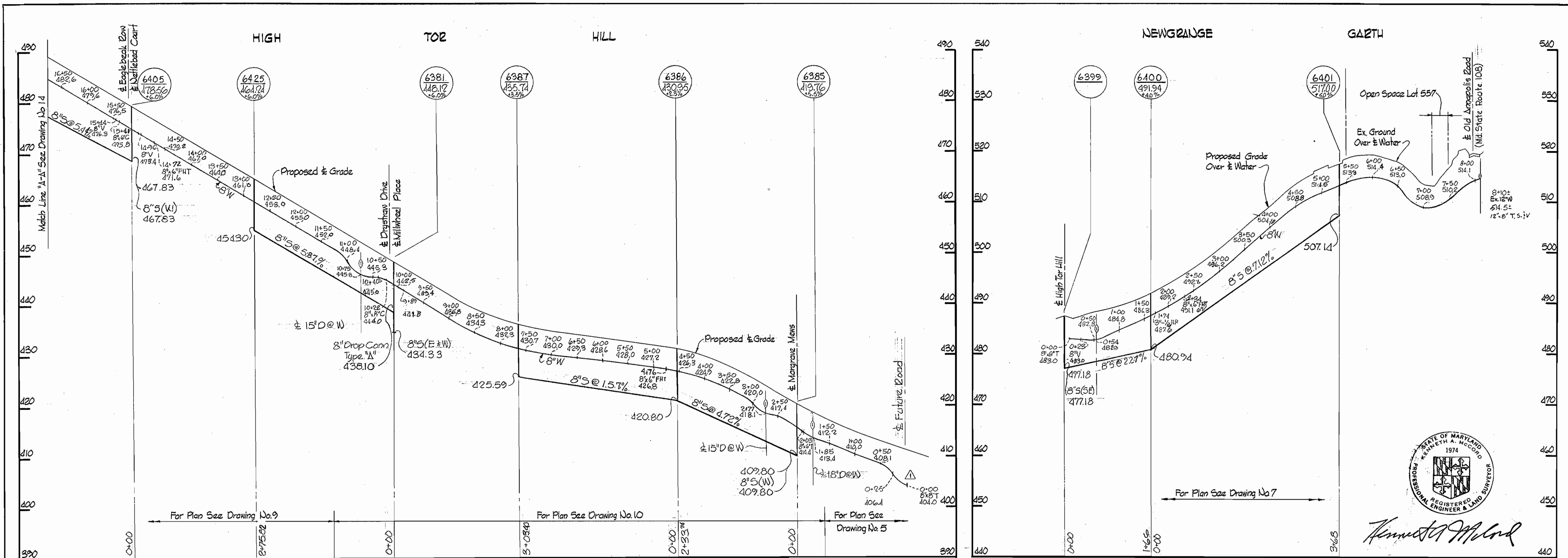
Kenneth A. McCord
 Village of Longreach
 Locust Park, Phelps Luck
 Section 1 Area 1-B
 Contract No. C-358-W#5

WHITMAN, REQUARDT & ASSOCIATES ENGINEERS 1304 ST. PAUL ST. BALTIMORE, MARYLAND	DEPARTMENT OF PUBLIC WORKS HOWARD COUNTY, MARYLAND 10-12-70 <i>W. O. Felber</i> CHIEF - BUREAU OF WATER AND SEWER	CONTRACT NO. C-358 W&S	PROFILES OF WATER & SEWER MAINS	COLUMBIA VILLAGE OF LONGREACH ELECTION DISTRICT GUILFORD NO. 6	DRAWING NO. 14	SCALE H:1"=100' V:1"=10'
					OF 17	

W. O. 6023-2

11/19/71

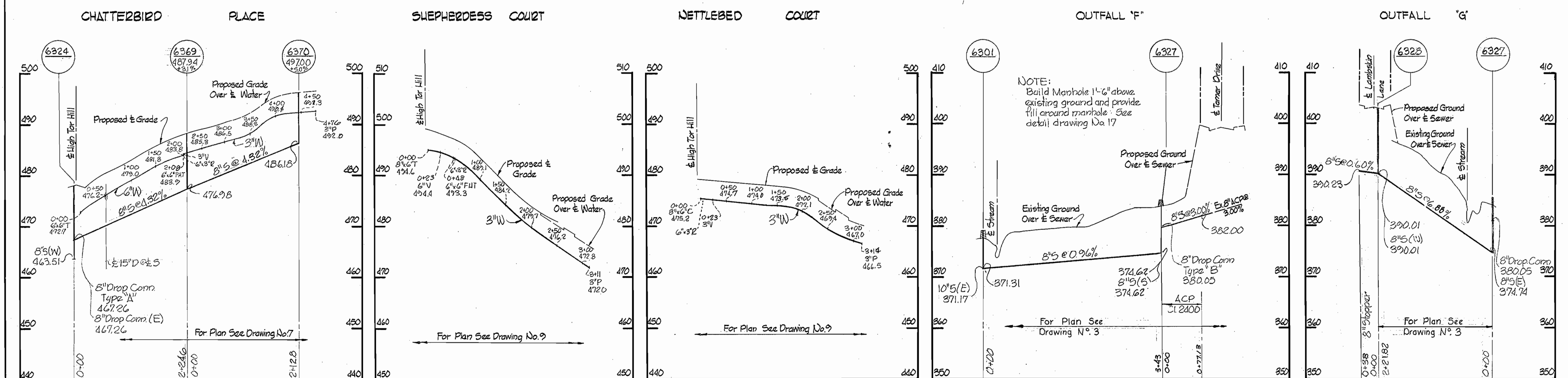
WS 358-W & S/14



Sewer Pipe - A.C. Class 2400
 Water Pipe - Cast Iron



Kenneth A. McLeod



11-2-70	Revised 8" Water, between Sta. 0+00-0+50 on High Tor Hill.
No.	Date
	Revision.

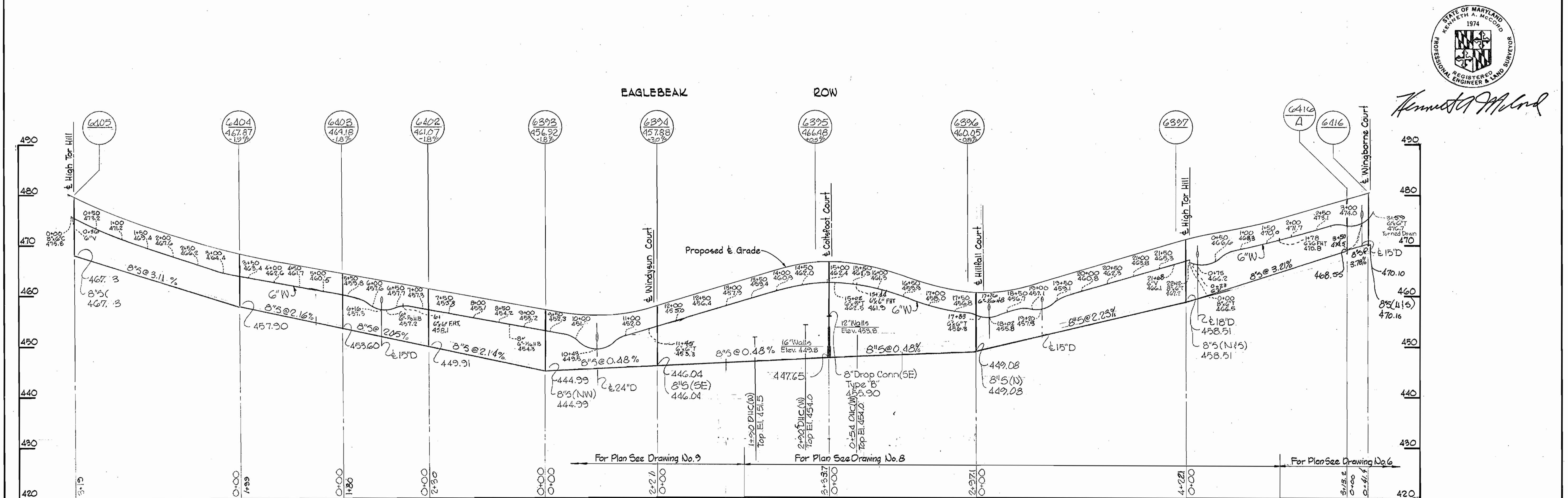
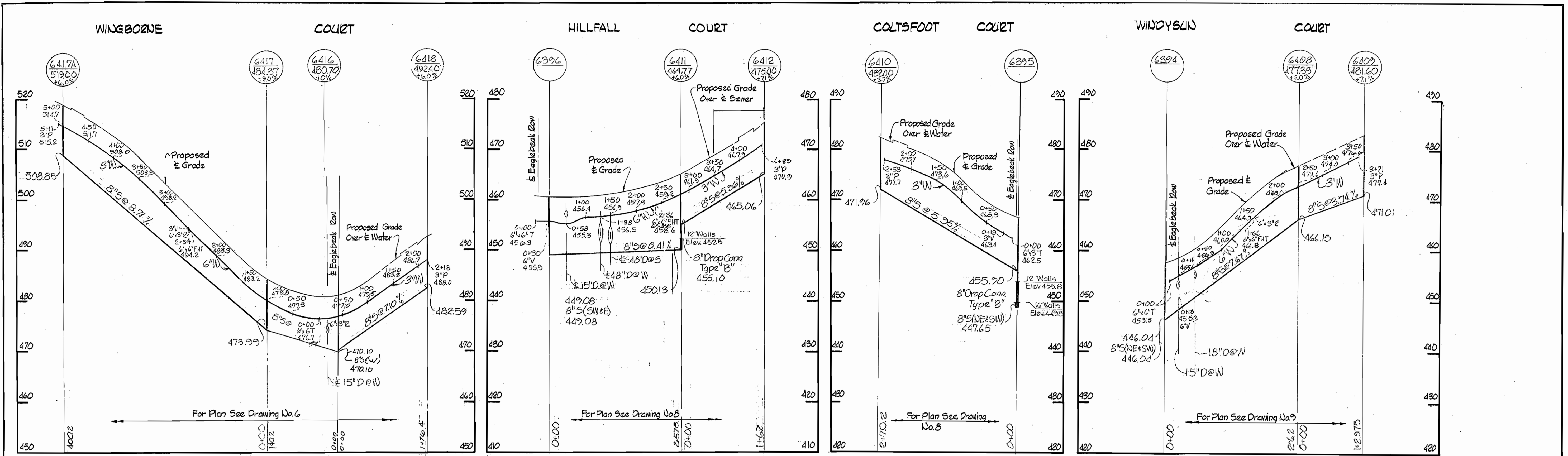
Village of Longreach
 Locust Park, Phelps Luck
 Section I Area I-B
 Contract No. C-358-W#5

WHITMAN, REQUARDT & ASSOCIATES ENGINEERS 1304 ST. PAUL ST. BALTIMORE, MARYLAND	DEPARTMENT OF PUBLIC WORKS HOWARD COUNTY, MARYLAND 10-12-70 <i>W. O. P. [Signature]</i> CHIEF - BUREAU OF WATER AND SEWER	CONTRACT NO. C-358 W&S	PROFILES OF WATER & SEWER MAINS	COLUMBIA VILLAGE OF LONGREACH ELECTION DISTRICT GUILFORD NO. 6	DRAWING NO. 15	SCALE H:1"=100' V:1"=10'
					OF 17	

W. O. 6023-2

Oct 11, 1971

WS 358-W&S/15



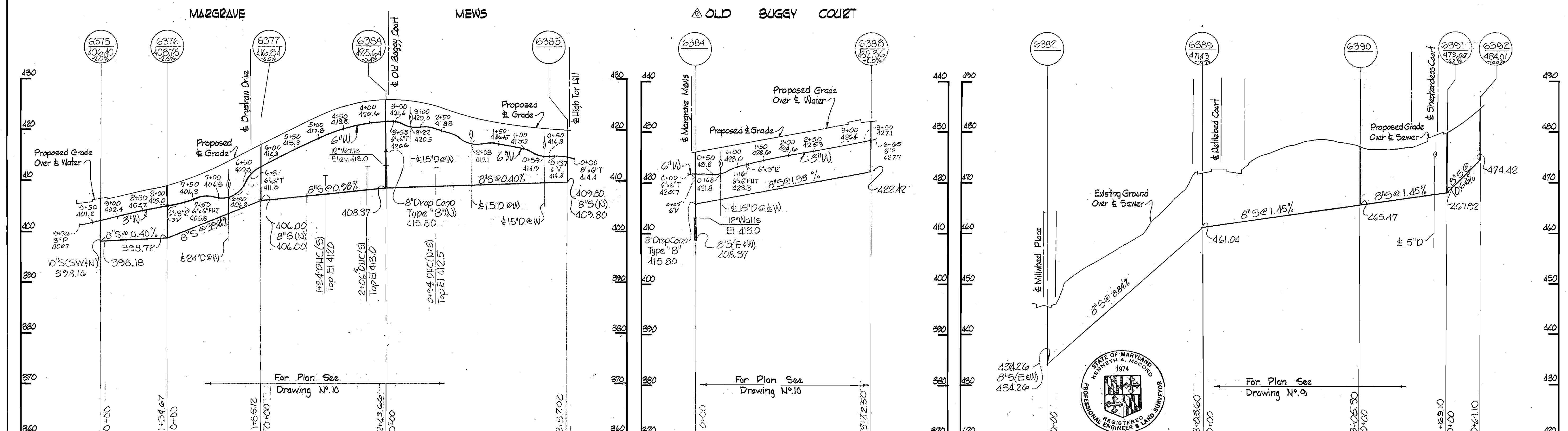
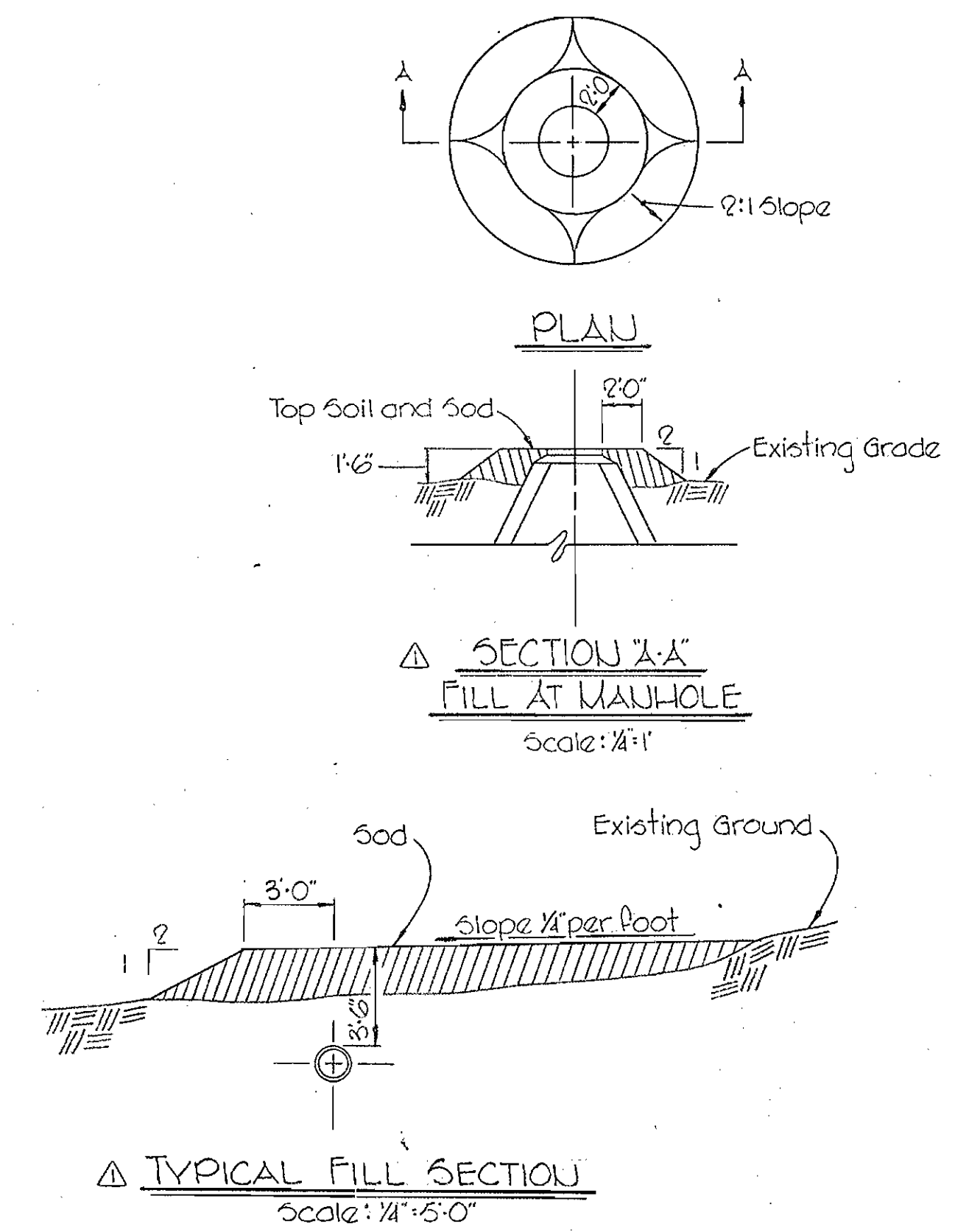
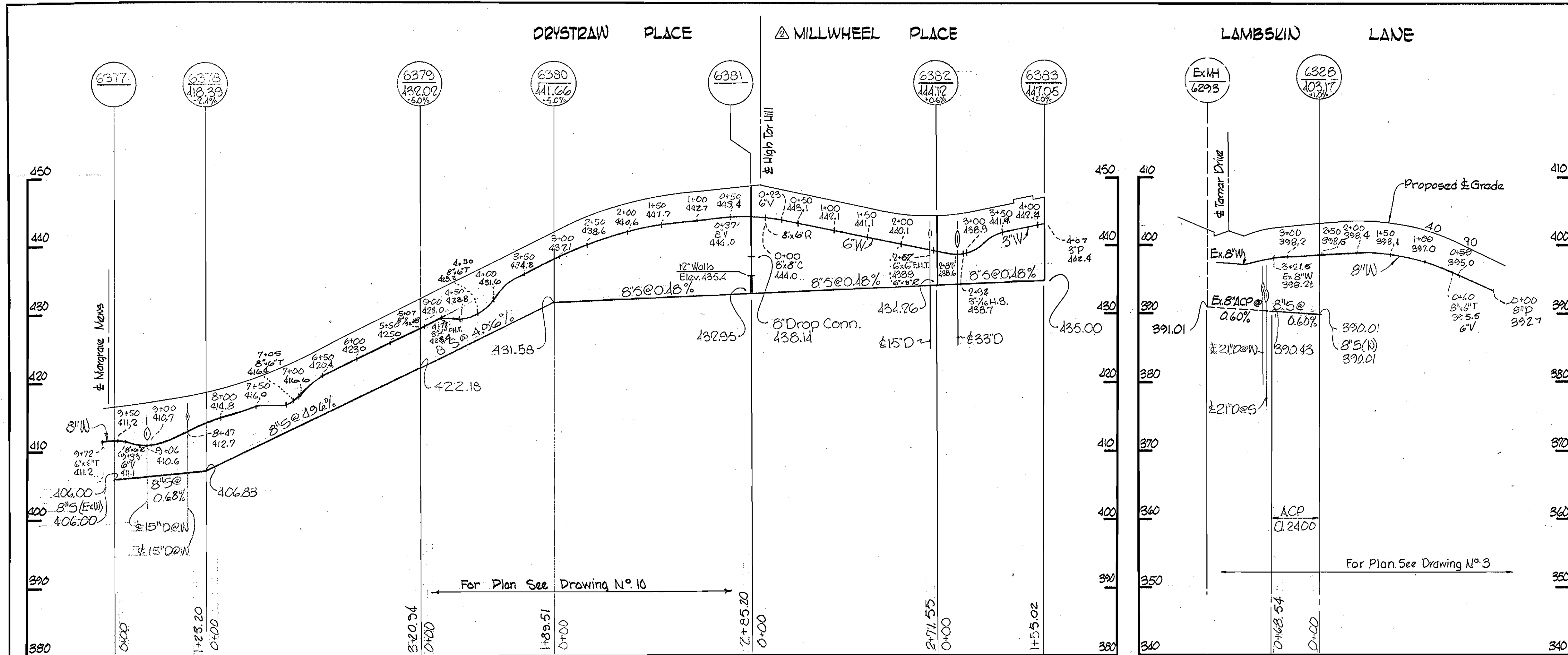
Kenneth A. McCord

Village of Longreach
Locust Park, Phelps Luck
Section 1 Area 1-B
Contract No. C-358-W#6

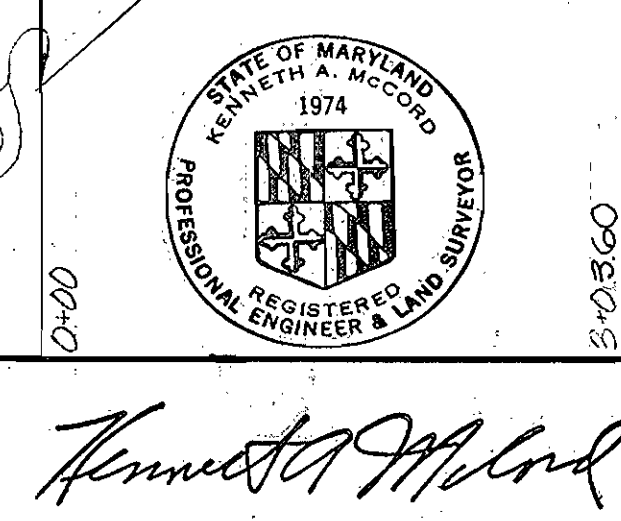
WHITMAN, REQUARDT & ASSOCIATES ENGINEERS 1304 ST. PAUL ST. BALTIMORE, MARYLAND	DEPARTMENT OF PUBLIC WORKS HOWARD COUNTY, MARYLAND 10-12-70 <i>W.D. Albert</i> CHIEF-BUREAU OF WATER AND SEWER	CONTRACT NO. C-358 W&S	PROFILES OF WATER & SEWER MAINS	COLUMBIA VILLAGE OF LONGREACH ELECTION DISTRICT GUILFORD NO. 6	DRAWING NO. 16 OF 17 SCALE H:1"=100' V:1"=10' BUILT Oct 11, 1971
---	--	------------------------	------------------------------------	--	--

WS 358-W&S/16

W. O. 6023-2



11-2-70	Revised Water and Sewer Profiles, Millwheel Place and Old Buggy Court.
10-22-70	Added Fill Detail
No. Date	Revision



WHITMAN, REQUARDT & ASSOCIATES ENGINEERS 1304 ST. PAUL ST. BALTIMORE, MARYLAND	DEPARTMENT OF PUBLIC WORKS HOWARD COUNTY, MARYLAND 10-12-70 <i>W. O. Folbert</i> CHIEF - BUREAU OF WATER AND SEWER	CONTRACT NO. C-358 WBS	PROFILES OF WATER & SEWER MAINS	COLUMBIA VILLAGE OF LONGREACH ELECTION DISTRICT GUILFORD NO. 6	DRAWING NO. 17	SCALE H:1"=100' V:1"=10'
					OF 17	Oct 11, 1971

W. O. 6023-2

WS 358-WBS/17