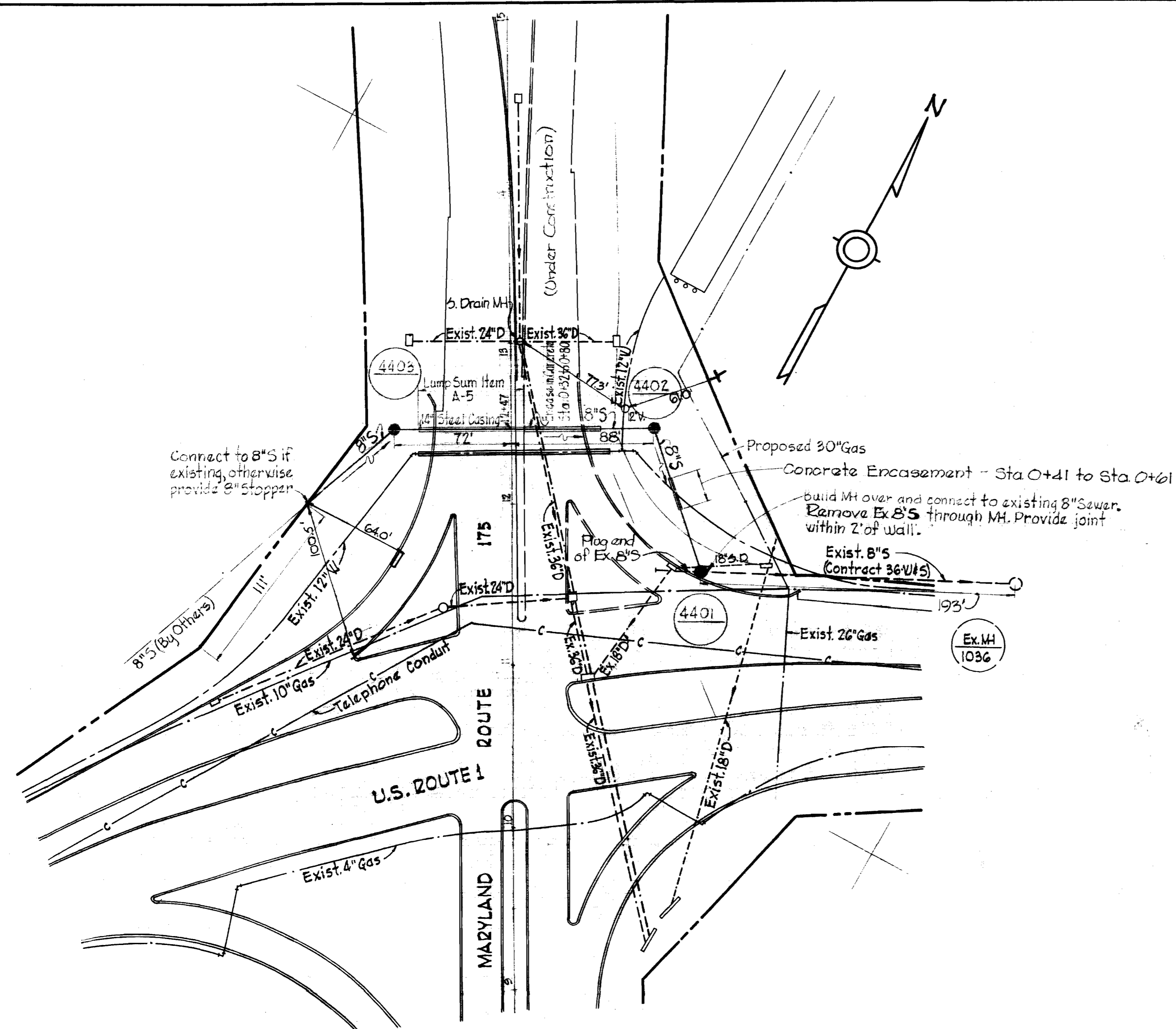
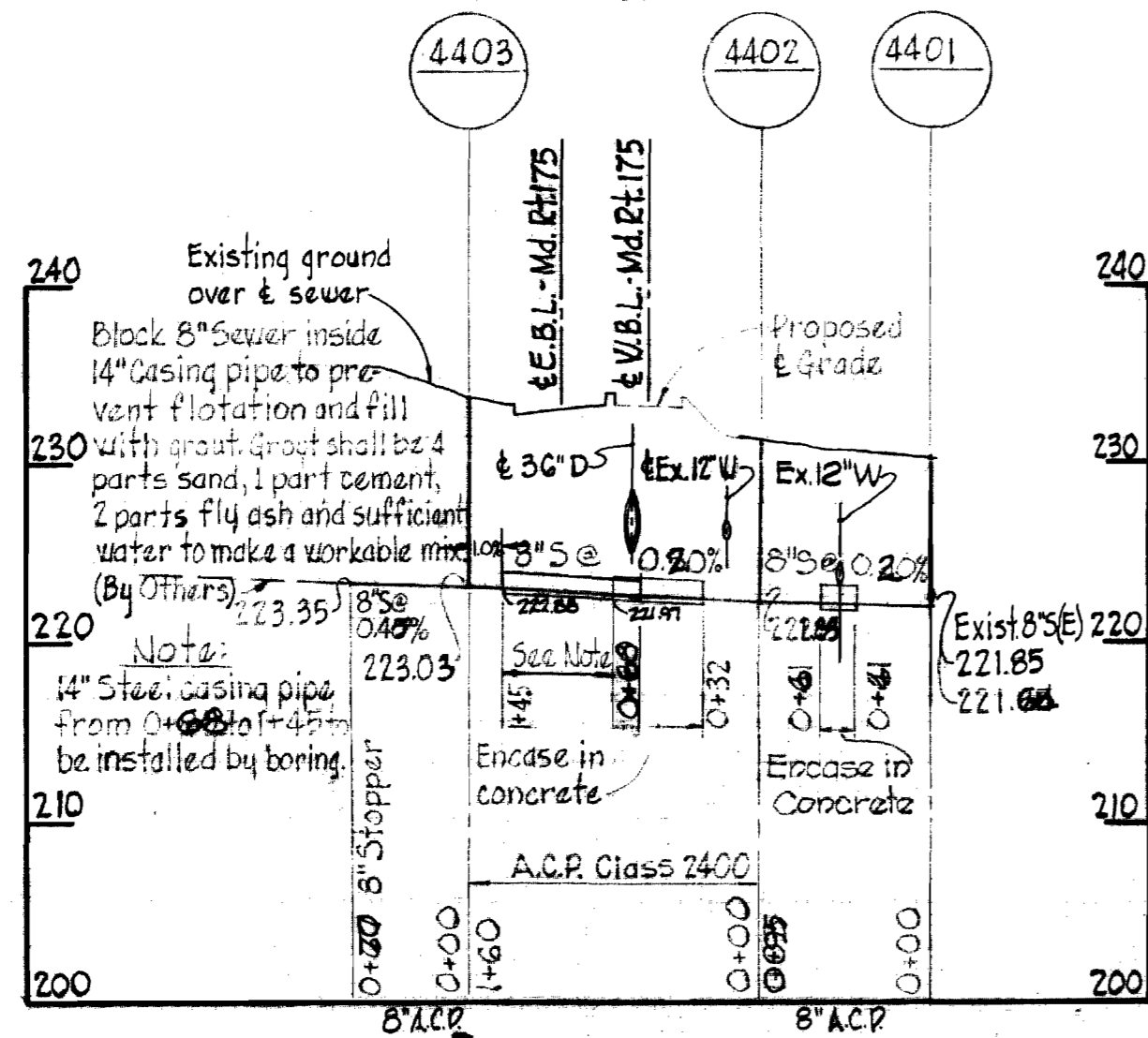


VICINITY MAP
Scale: 1" = 1/2 mile



PLAN
Scale: 1" = 50'



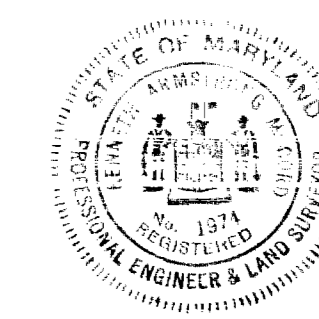
PROFILE
Scale: Horiz. 1" = 100'
Vert. 1" = 10'

GENERAL NOTES

1. Approximate location of existing mains are shown. The Contractor shall take all necessary precautions to protect existing mains and services and maintain uninterrupted supply. Any damage incurred shall be repaired immediately.
2. All pipe elevations shown are invert elevations.
3. The Contractor shall locate existing utilities a minimum of two weeks in advance of construction operations in vicinity of utilities.
4. For all standard details see standards bound in specifications.
5. Clear all utilities by a minimum of 6'; clear all poles by 2'-0" minimum or tunnel as required.
6. The Contractor shall provide a joint within 2'-0" of exterior manhole walls.
7. All horizontal and vertical controls are based on Maryland State Datum.

QUANTITIES	
ITEM	QUANTITY
8" Sewer	330'

STAKEOUT & DIARY IN FB # 4627



Therese M. Wood

Humble Oil
Contract No. 351-S

WHITMAN, REQUARDT & ASSOCIATES
ENGINEERS
1304 ST. PAUL ST.
BALTIMORE, MARYLAND

DEPARTMENT OF PUBLIC WORKS
HOWARD COUNTY, MARYLAND

CONTRACT NO. 351-S

PLAN AND PROFILE
OF SEWER MAINS

ELECTION DISTRICT
ELKRIDGE NO. 1

DRAWING NO. 1 OF 1
SCALE AS SHOWN

1-23-70
DATE

W. O. Filbert
CHIEF - BUREAU OF WATER AND SEWER