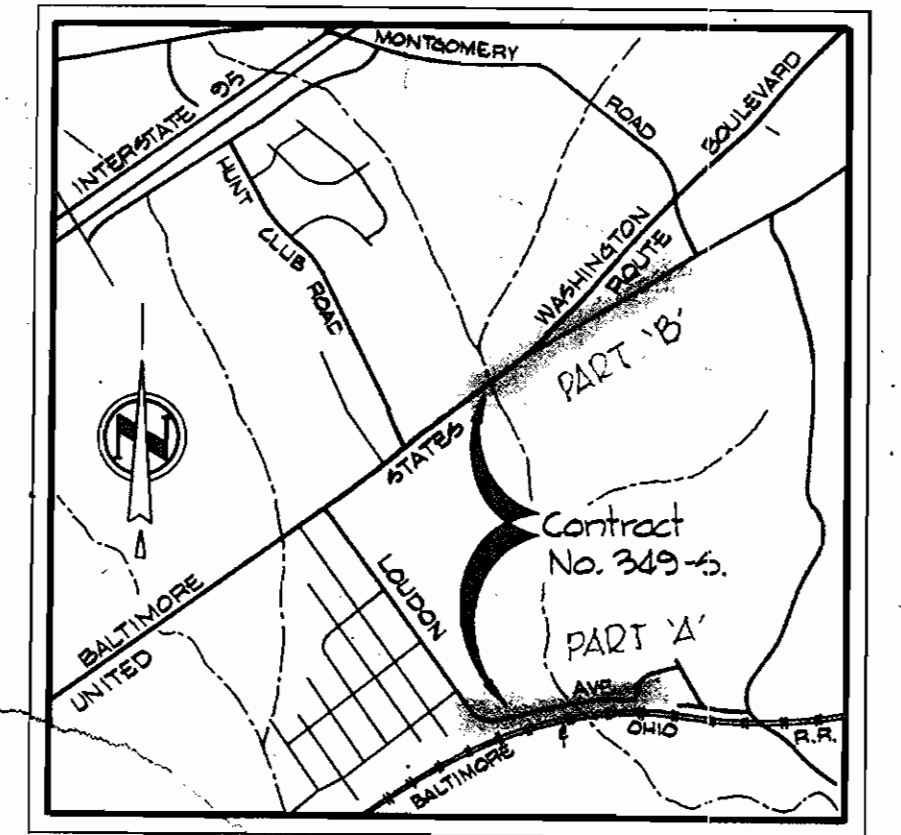


WS 349-S/1

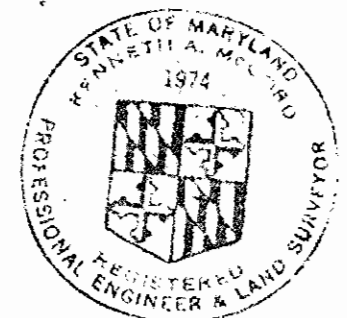


VICINITY MAP
Scale: 1" = 2,400'

GENERAL NOTES

1. Approximate location of existing mains are shown. The Contractor shall take all necessary precautions to protect existing mains and services and maintain uninterrupted supply. Any damage incurred shall be repaired immediately.
2. All pipe elevations shown are invert elevations.
3. The Contractor shall locate existing utilities a minimum of two weeks in advance of construction operations in vicinity of utilities.
4. For all standard details see Standards bound in Specifications.
5. Clear all utilities by a minimum of 6', clear all poles by 2'-0" minimum or tunnel as required.
6. The Contractor shall provide a joint in all sewer mains within 2'-0" of exterior manhole walls.
7. All manholes shall be 4'-0" inside diameter except where noted.
8. All horizontal and vertical controls are based on Howard County Datum.
9. Payment for Strapping F.H.'s to Tee's shall be included in Unit Price Bid For Excavation & Backfill for Sewer Mains.

AS-BUILT
STAKEOUT FB# 5210
DIARY FB# 5211

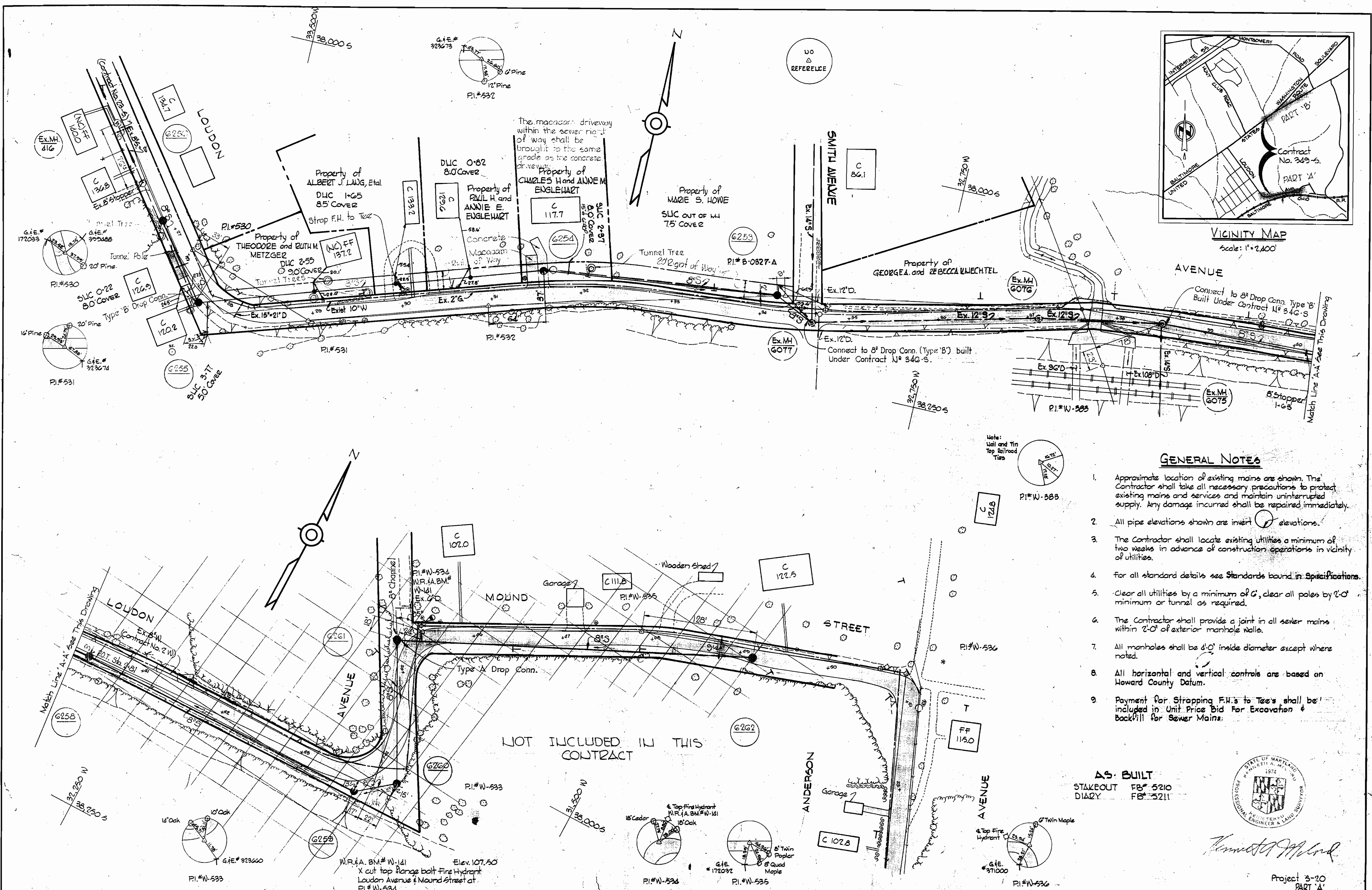


Thomas M. Wood

Project 3-20
PART 'A'
Contract No. 349-S

DRAWING NO. 1 OF 4	SCALE AS SHOWN	38.4W21
		38.4W22
		39.6W21
		39.6W22

FB# 4641 Nov. 13, 1972 AS BUILT



WHITMAN, REQUARDT & ASSOCIATES
ENGINEERS
1304 ST. PAUL ST.
BALTIMORE, MARYLAND

DEPARTMENT OF PUBLIC WORKS
HOWARD COUNTY, MARYLAND
9-21-70
DATE

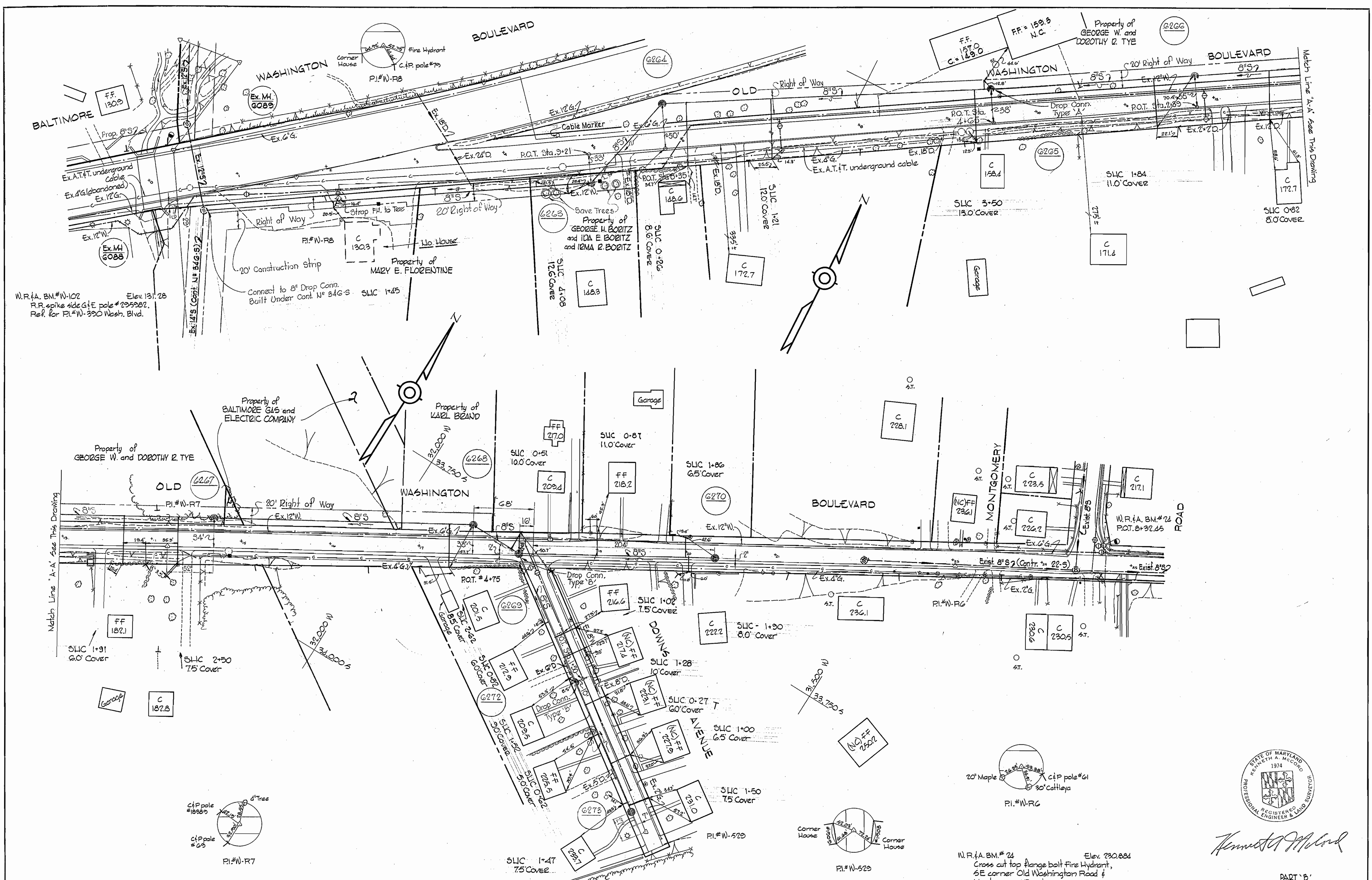
CONTRACT NO. 349-S

PLAN OF SEWER MAINS

ELECTION DISTRICT
ELKRIDGE, NO. 1

W. O. Gilbert
CHIEF - BUREAU OF WATER AND SEWER

W. O. G185-2

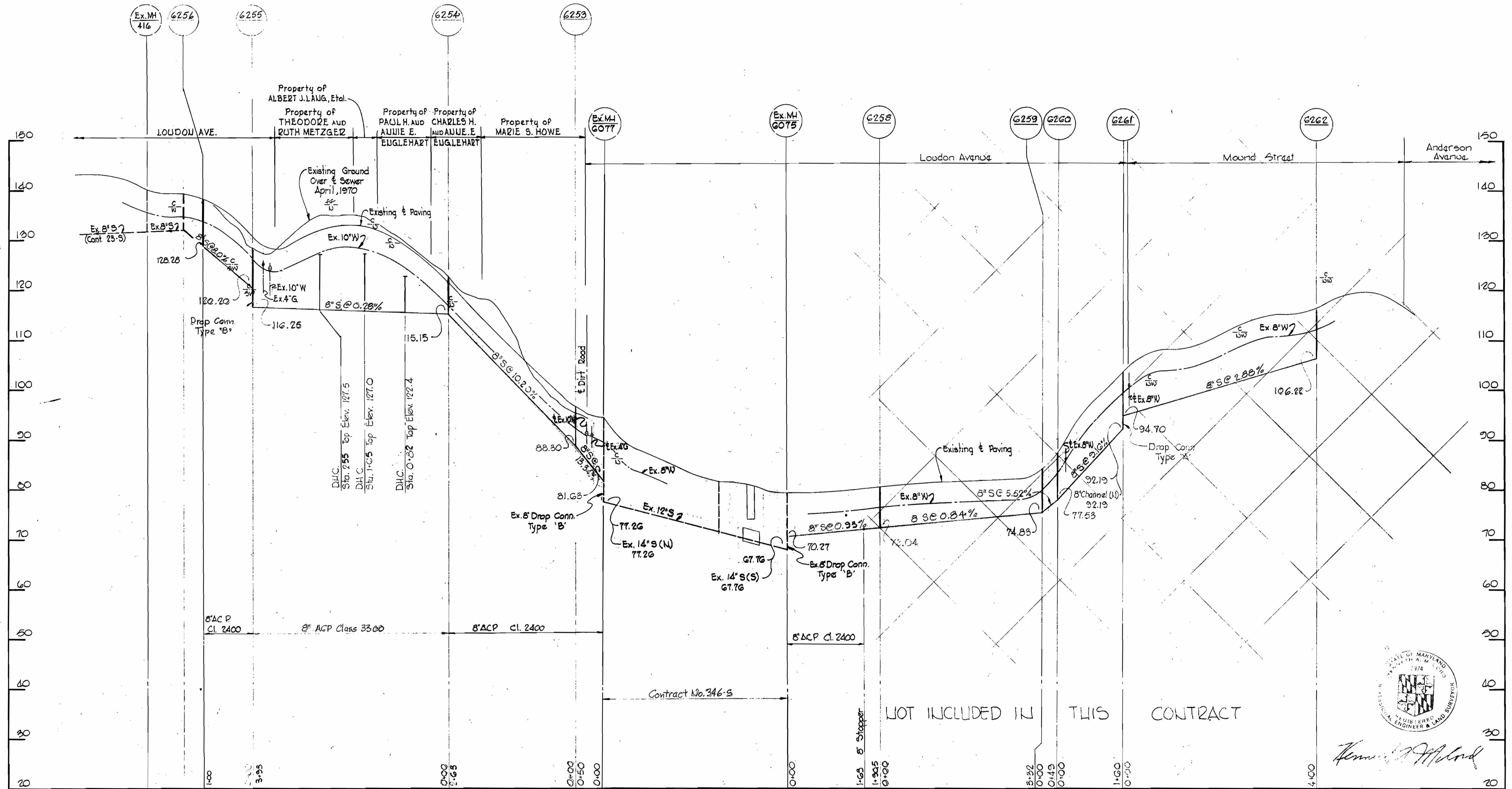


WHITMAN, REQUARDT & ASSOCIATES ENGINEERS 1304 ST. PAUL ST. BALTIMORE, MARYLAND	DEPARTMENT OF PUBLIC WORKS HOWARD COUNTY, MARYLAND 9-21-70 <i>W. O. Fulber</i> CHIEF-BUREAU OF WATER AND SEWER	CONTRACT NO. 349-S	PLAN OF SEWER MAINS	ELECTION DISTRICT ELKRIDGE NO. 1	DRAWING NO. 2 OF 4 SCALE 1" = 50' PART 'B' Contract No. 349-S
---	--	--------------------	---------------------	-------------------------------------	--

W. O. 6185-2 Nov 13, 1972 AS BUILT F.D.# 2522, 4609, 4630

WS 349-S/2

LOUDON AVENUE



Henry J. Milard

LOT INCLUDED IN THIS CONTRACT

Contract No. 346-S

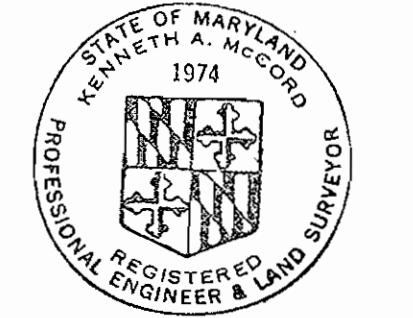
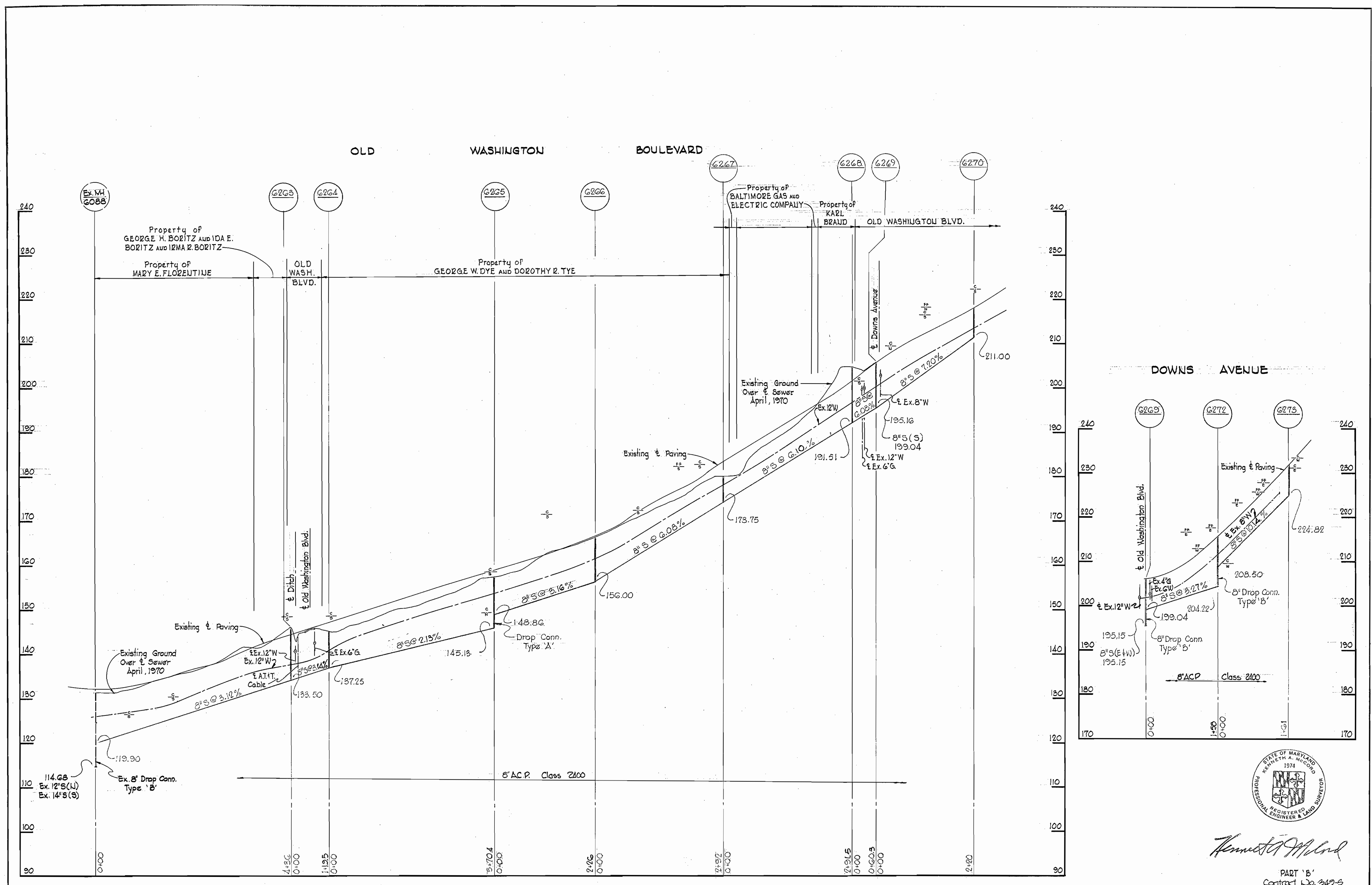
WHITMAN, REQUARDT & ASSOCIATES ENGINEERS 1304 ST. PAUL ST. BALTIMORE, MARYLAND	DEPARTMENT OF PUBLIC WORKS HOWARD COUNTY, MARYLAND DATE <u>9-21-70</u> <i>W. O. Gibbs</i> CHIEF-BUREAU OF WATER AND SEWER	CONTRACT NO. <u>349-S</u>	PROFILES OF SEWER MAINS	ELECTION DISTRICT ELKBRIDGE NO. 1	PART 'A' Contract No. 349-S DRAWING NO. <u>3</u> OF <u>4</u> SCALE H: 1"=100' V: 1"=10'
---	---	---------------------------	----------------------------	--------------------------------------	---

W. O. Gibbs-2

Nov. 13, 1972

WS 349-S/3

WS 349-5/4



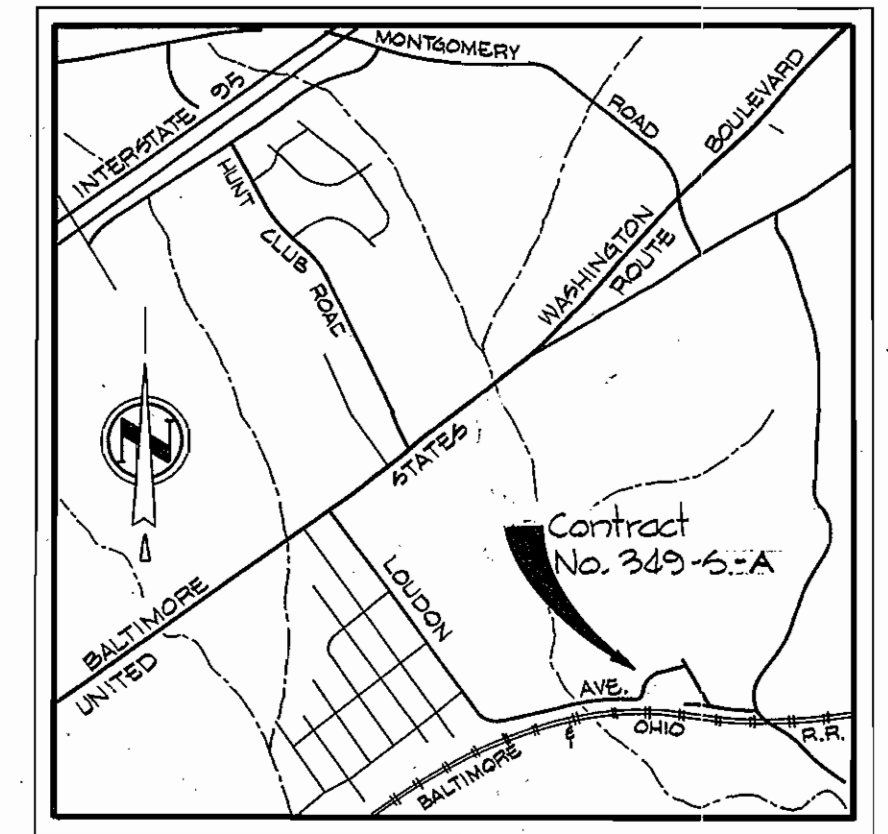
Kenneth A. McLeod

PART 'B'
Contract No. 349-5

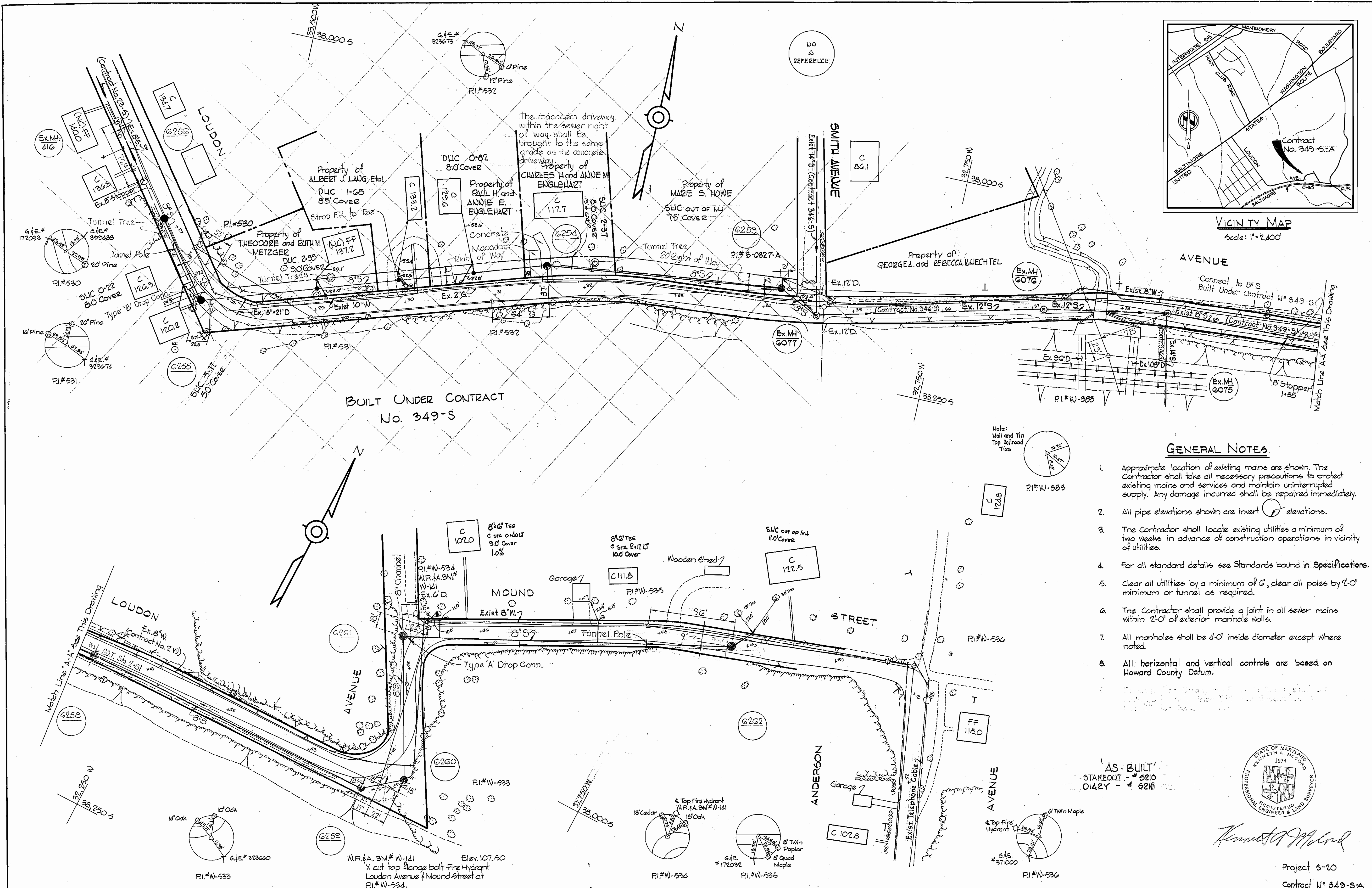
WHITMAN, REQUARDT & ASSOCIATES ENGINEERS 1304 ST. PAUL ST. BALTIMORE, MARYLAND	DEPARTMENT OF PUBLIC WORKS HOWARD COUNTY, MARYLAND 9-21-70 <i>W. O. Ribbel</i> CHIEF-BUREAU OF WATER AND SEWER	CONTRACT NO. 349-S	PROFILES OF SEWER MAINS	ELECTION DISTRICT ELKRIDGE NO. 1	DRAWING NO. 4 OF 4 SCALE H:1"=100' V:1"=10'
---	--	--------------------	----------------------------	-------------------------------------	--

W. O. 6185-2

Nov 13, 1972

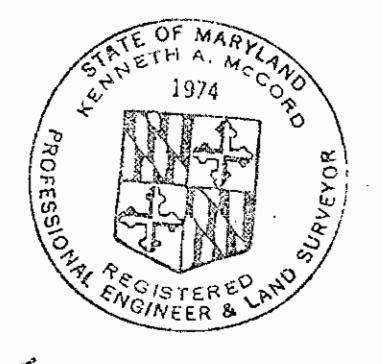


VICINITY MAP
Scale: 1" = 2,400'



GENERAL NOTES

1. Approximate location of existing mains are shown. The Contractor shall take all necessary precautions to protect existing mains and services and maintain uninterrupted supply. Any damage incurred shall be repaired immediately.
2. All pipe elevations shown are invert elevations.
3. The Contractor shall locate existing utilities a minimum of two weeks in advance of construction operations in vicinity of utilities.
4. For all standard details see Standards bound in Specifications.
5. Clear all utilities by a minimum of 6', clear all poles by 2'-0" minimum or tunnel as required.
6. The Contractor shall provide a joint in all sewer mains within 2'-0" of exterior manhole walls.
7. All manholes shall be 4'-0" inside diameter except where noted.
8. All horizontal and vertical controls are based on Howard County Datum.



Kenneth M. Lind

Project 5-20
Contract No. 349-S-A

WHITMAN, REQUARDT & ASSOCIATES
ENGINEERS
1304 ST. PAUL ST.
BALTIMORE, MARYLAND

DEPARTMENT OF PUBLIC WORKS
HOWARD COUNTY, MARYLAND
9-21-70
DATE
W. O. Lubert
CHIEF-BUREAU OF WATER AND SEWER

CONTRACT NO. 349-S-A

PLAN OF SEWER MAINS

ELECTION DISTRICT
ELKRIDGE NO. 1

DRAWING NO. 1 OF 2	SCALE AS SHOWN
38-SW-21	38-SW-22
39-SW-21	39-SW-22

P.B.# 4641
F.B.# 5210, 5211

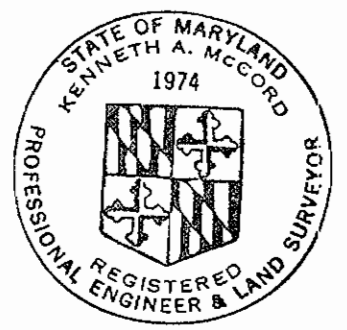
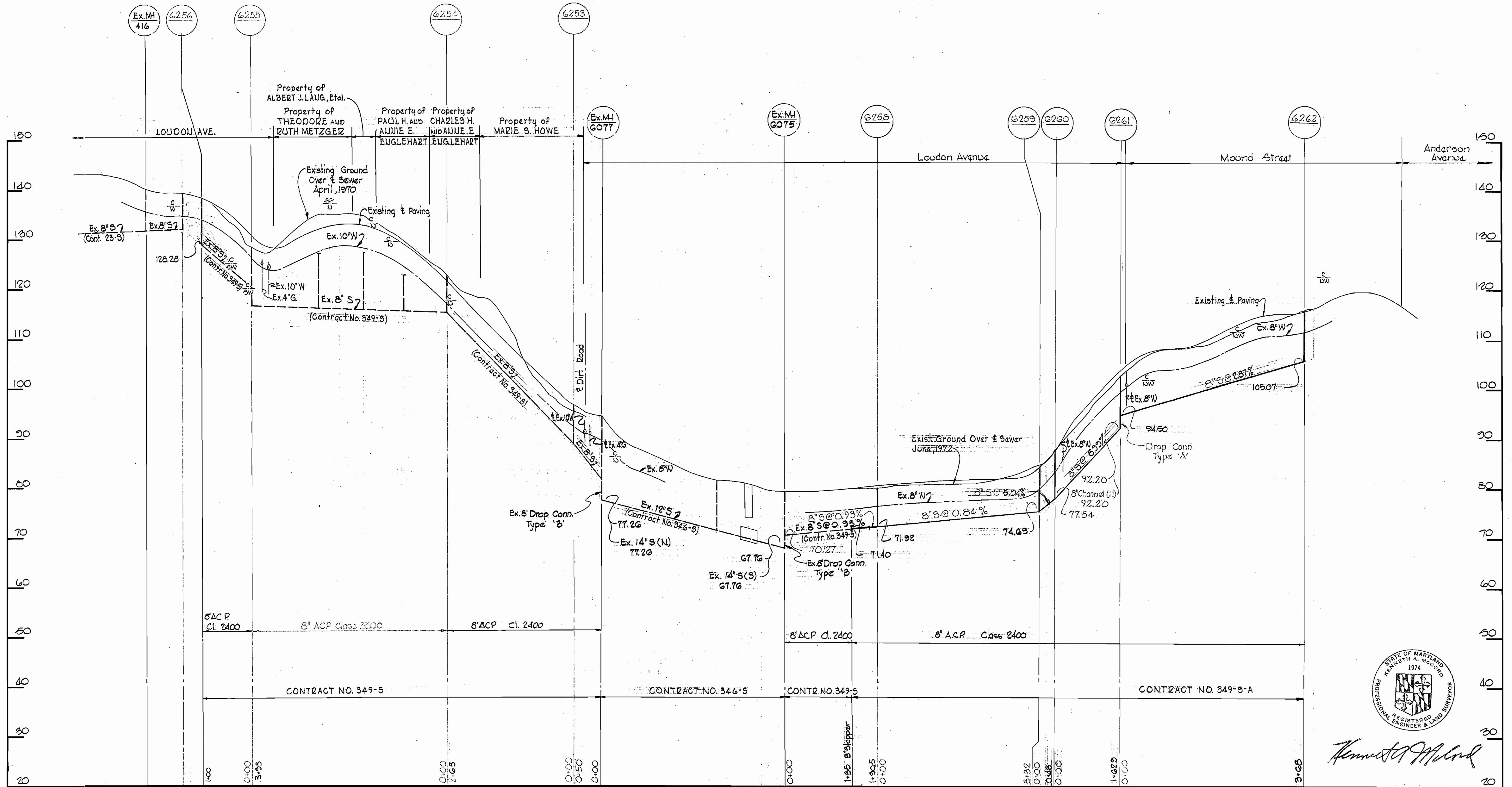
WS 349S-A/1

W. O. C185-2

WS 349-S-A/2

LOUDON AVENUE

LOUDON AVENUE



Kenneth A. McCord

WHITMAN, REQUARDT & ASSOCIATES ENGINEERS 1304 ST. PAUL ST. BALTIMORE, MARYLAND	DEPARTMENT OF PUBLIC WORKS HOWARD COUNTY, MARYLAND 9-21-70 DATE	CONTRACT NO. 349-S-A CHIEF-BUREAU OF WATER AND SEWER	PROFILES OF SEWER MAINS	ELECTION DISTRICT ELKRIDGE NO. 1	DRAWING NO. 2 OF 2	SCALE H:1"=100' V:1"=10'
					PROJECT 6-20 Contract No. 349-S-A	

W. O. GIBBS-2

Aug 6, 1973 AS BUILT