

VICINITY MAP
Scale: 1"=2400'

GENERAL NOTES

1. Approximate location of existing mains are shown. The Contractor shall take all necessary precautions to protect existing mains and services and maintain uninterrupted supply. Any damage incurred shall be repaired immediately.
2. All pipe elevations shown are invert elevations.
3. The Contractor shall locate existing utilities a minimum of two weeks in advance of construction operations in vicinity of utilities.
4. For all standard details see standards bound in specifications.
5. Clear all utilities by a minimum of 6', clear all poles by 2'-0" minimum or tunnel as required.
6. The Contractor shall provide a joint in all sewer mains within 2'-0" of exterior manhole walls.
7. All manholes shall be 4'-0" inside diameter.
8. All horizontal and vertical controls are based on Howard County Datum.

AS-BUILT
Stakeout FB# 5177
Diary FB# 5178
7# 5258
8# 5387

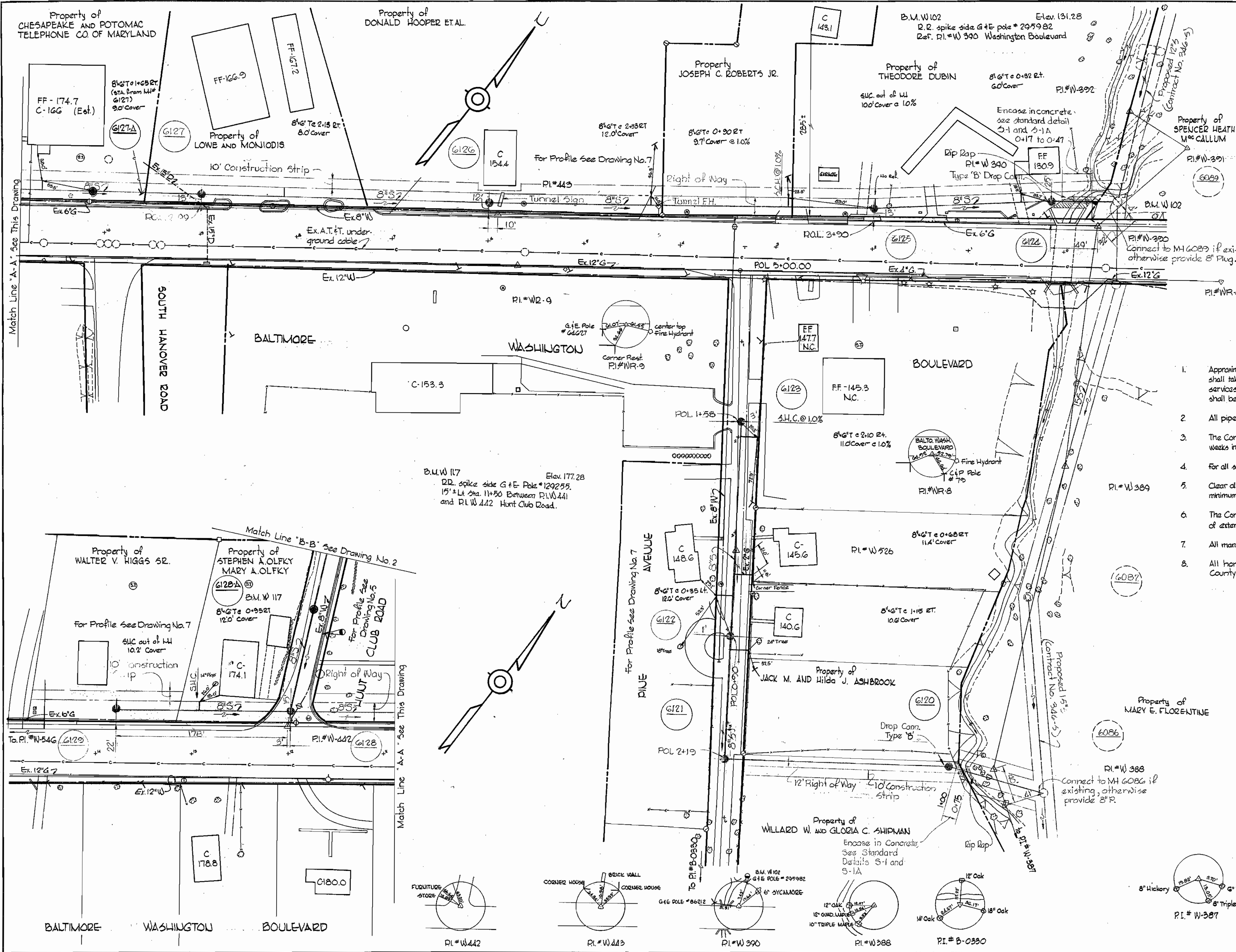


Handwritten signature

Project 3-20
Hunt Club Collecting Sewers
Contract No. 348-S

DRAWING NO. 1 OF 7	SCALE 1"=50'	35-2W 25 36-2W 25
--------------------	--------------	----------------------

FB# 4570, 4343 AS BUILT
MAR 12 1974



WHITMAN, REQUARDT & ASSOCIATES
ENGINEERS
1304 ST. PAUL ST.
BALTIMORE, MARYLAND

DEPARTMENT OF PUBLIC WORKS
HOWARD COUNTY, MARYLAND
8-25-70
W. O. GIBBS
CHIEF - BUREAU OF WATER AND SEWER

CONTRACT NO. 348-S

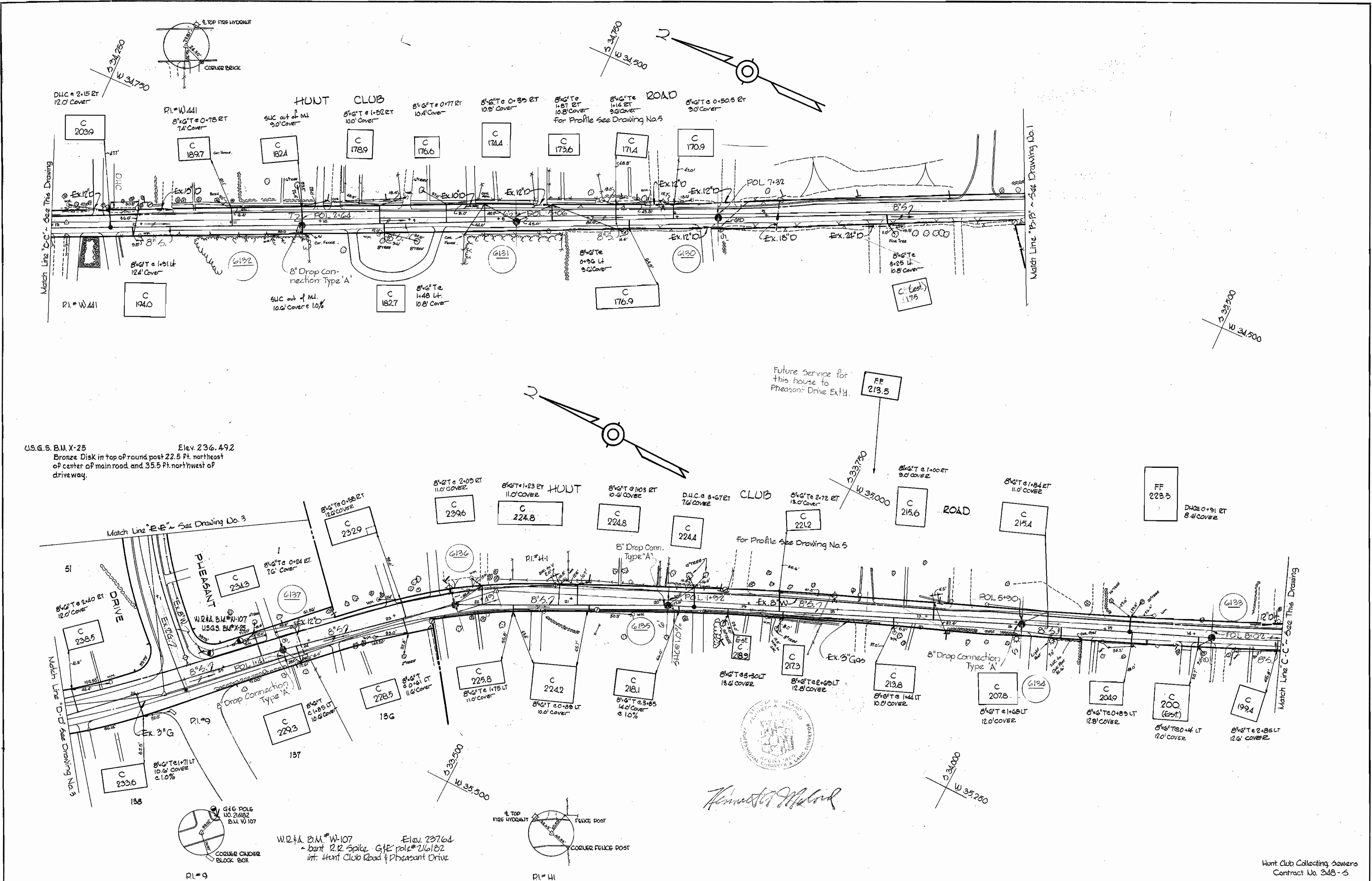
PLAN OF
SEWER MAINS

HUNT CLUB COLLECTING SEWERS

W. O. GIBBS-2

NS 348-S/1

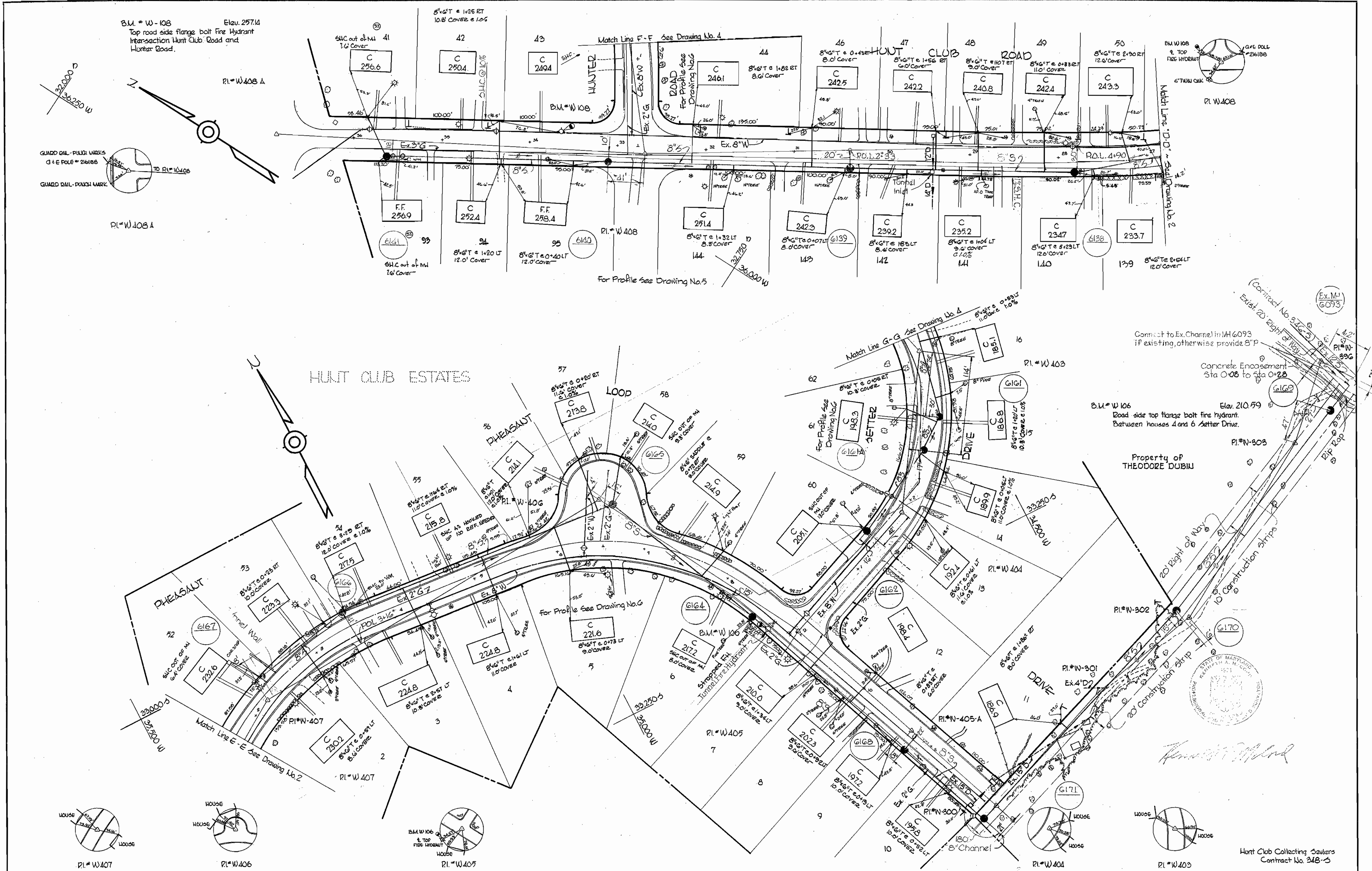
SUSPENDED



WHITMAN, REQUARDT & ASSOCIATES ENGINEERS 1304 ST. PAUL ST. BALTIMORE, MARYLAND	DEPARTMENT OF PUBLIC WORKS HOWARD COUNTY, MARYLAND 8-25-70 <i>W. O. Filbert</i> CHIEF - BUREAU OF WATER AND SEWER	CONTRACT NO. 348-S	PLAN OF SEWER MAINS	HUNT CLUB COLLECTING SEWERS	DRAWING NO. 2 OF 7 SCALE 1" = 50' 348-24W 356-24W 365-24W 365-23W
---	---	--------------------	---------------------	-----------------------------	--

WS 348-5/2

WS 348-S/3

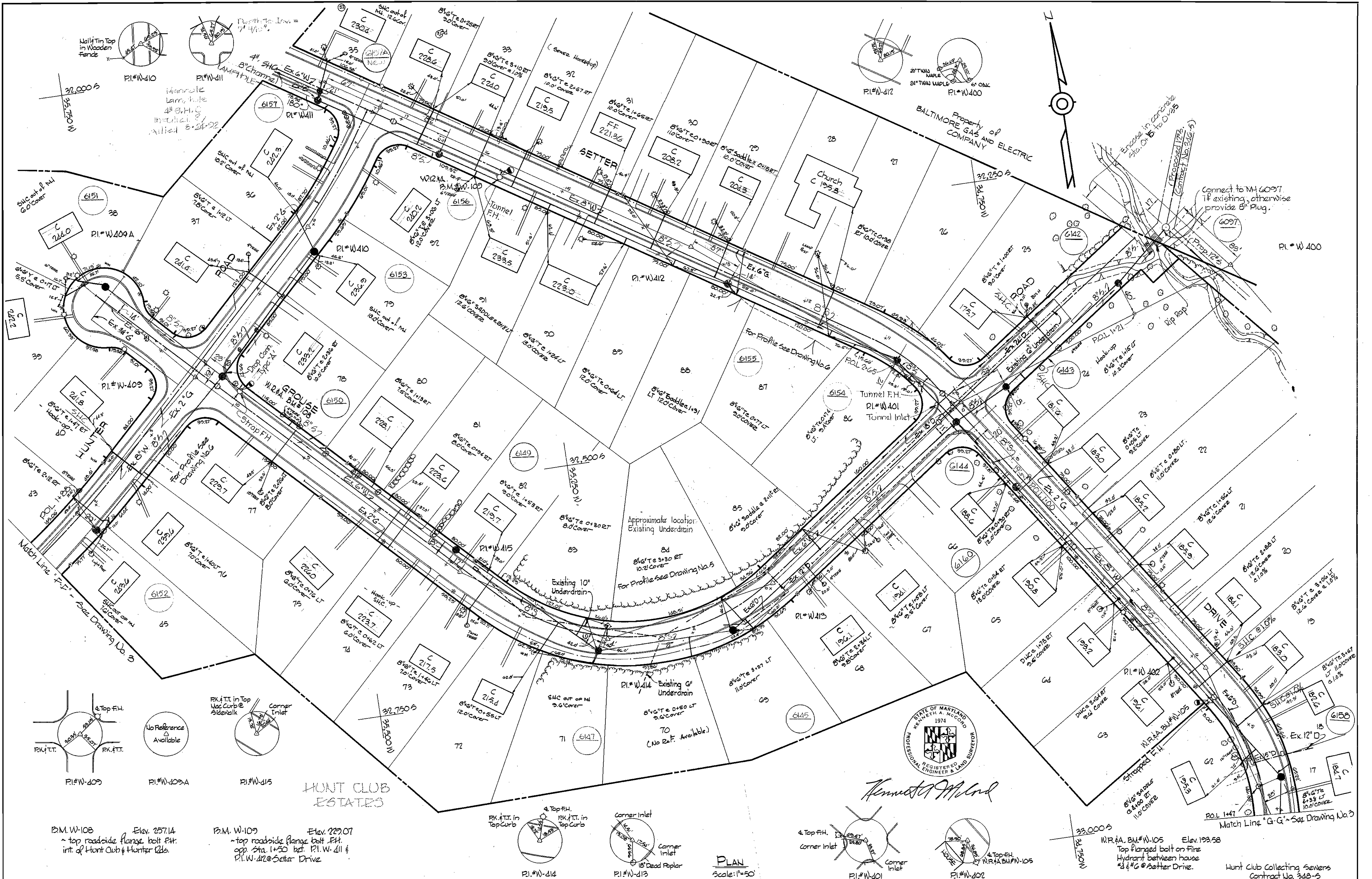


<p>WHITMAN, REQUARDT & ASSOCIATES ENGINEERS 1304 ST. PAUL ST. BALTIMORE, MARYLAND</p>	<p>DEPARTMENT OF PUBLIC WORKS HOWARD COUNTY, MARYLAND 8-25-70 DATE</p> <p><i>W. O. Dubiu</i> CHIEF-BUREAU OF WATER AND SEWER</p>	<p>CONTRACT NO. 348-S</p>	<p>PLAN OF SEWER MAINS</p>	<p>HUNT CLUB COLLECTING SEWERS</p>	<p>DRAWING NO. 3 OF 7</p>	<p>SCALE 1"=50'</p>
---	---	---------------------------	---	------------------------------------	---------------------------	---------------------

W. O. 6185-2 F. 12-4599, 4543 MAR 12 1974 AS BUILT

SUSPENDED

WS 348-S/H



WHITMAN, REQUARDT & ASSOCIATES
 ENGINEERS
 1304 ST. PAUL ST.
 BALTIMORE, MARYLAND

DEPARTMENT OF PUBLIC WORKS
 HOWARD COUNTY, MARYLAND
 8-25-70
 DATE

CONTRACT NO. 348-S

PLAN OF SEWER MAINS

HUNT CLUB COLLECTING SEWERS

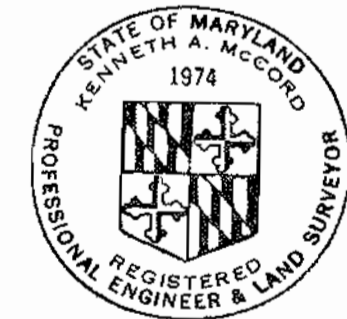
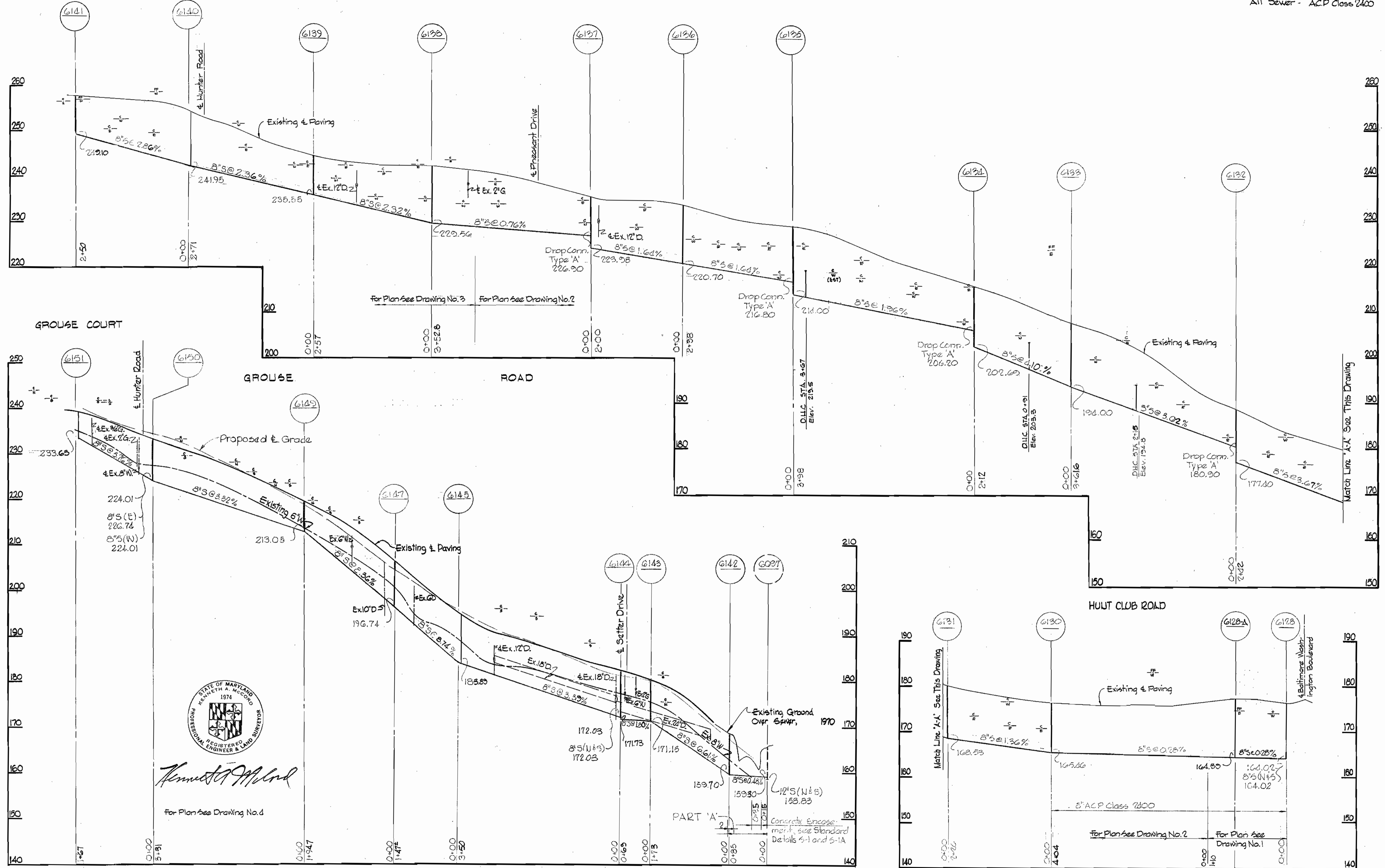
DRAWING NO. 4 OF 7
SCALE 1" = 50'

W. O. G185-2

AS-BUILT 5/03 MAR 12 1974 AS BUILT

HUNT CLUB ROAD

All Sewer - ACP Class 2400



Kenneth J. McLeod
For Plan See Drawing No. 4

WHITMAN, REQUARDT & ASSOCIATES
ENGINEERS
1304 ST. PAUL ST.
BALTIMORE, MARYLAND

DEPARTMENT OF PUBLIC WORKS
HOWARD COUNTY, MARYLAND
DATE 8-25-70 *W.D. Fallick*

CONTRACT NO. 348-S

PROFILES OF
SEWER MAINS

HUNT CLUB COLLECTING SEWERS

DRAWING NO. 5 OF 7

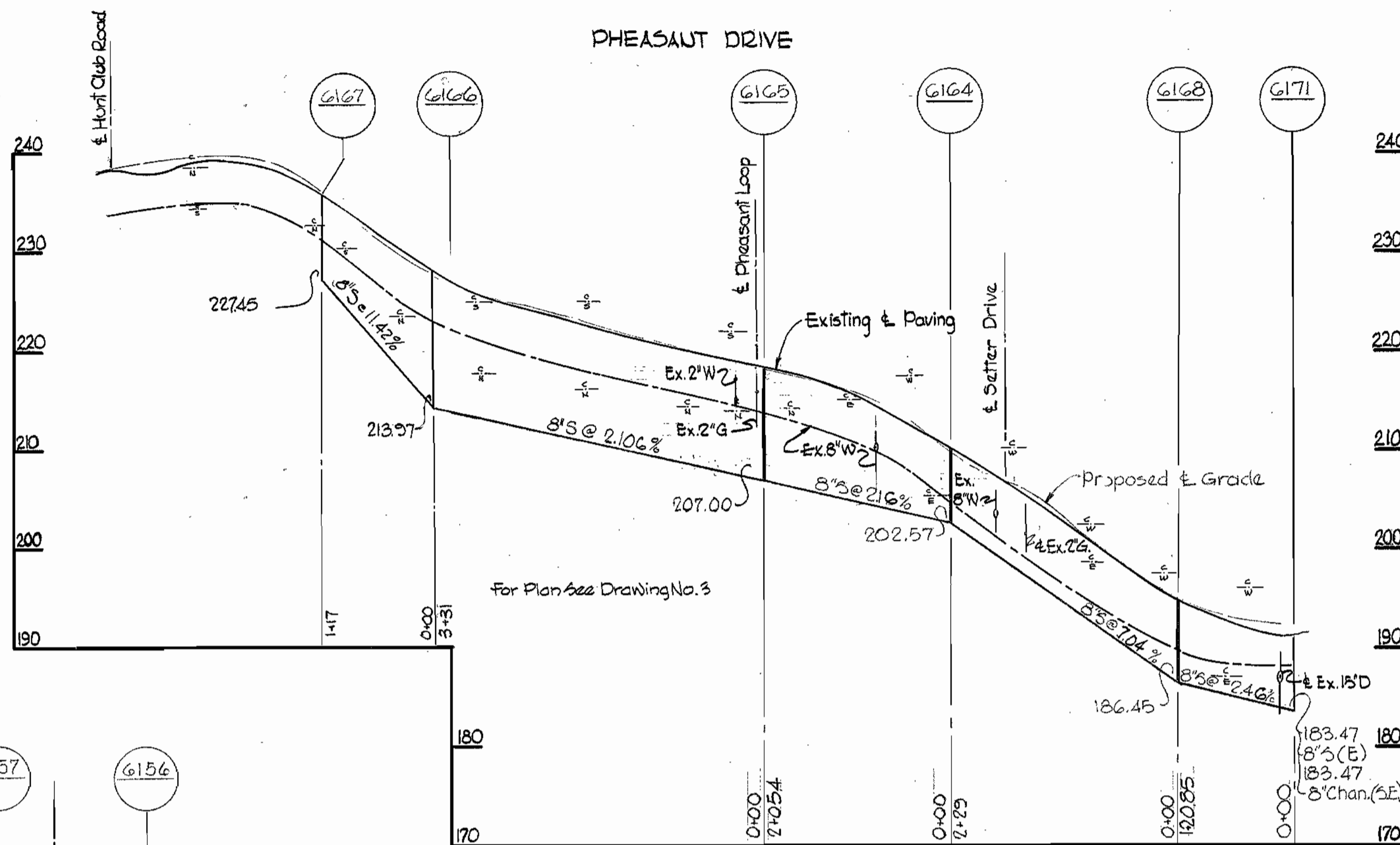
SCALE H:V = 100' / 1" = 10'

Hunt Club Collecting Sewer Contract No. 348-S

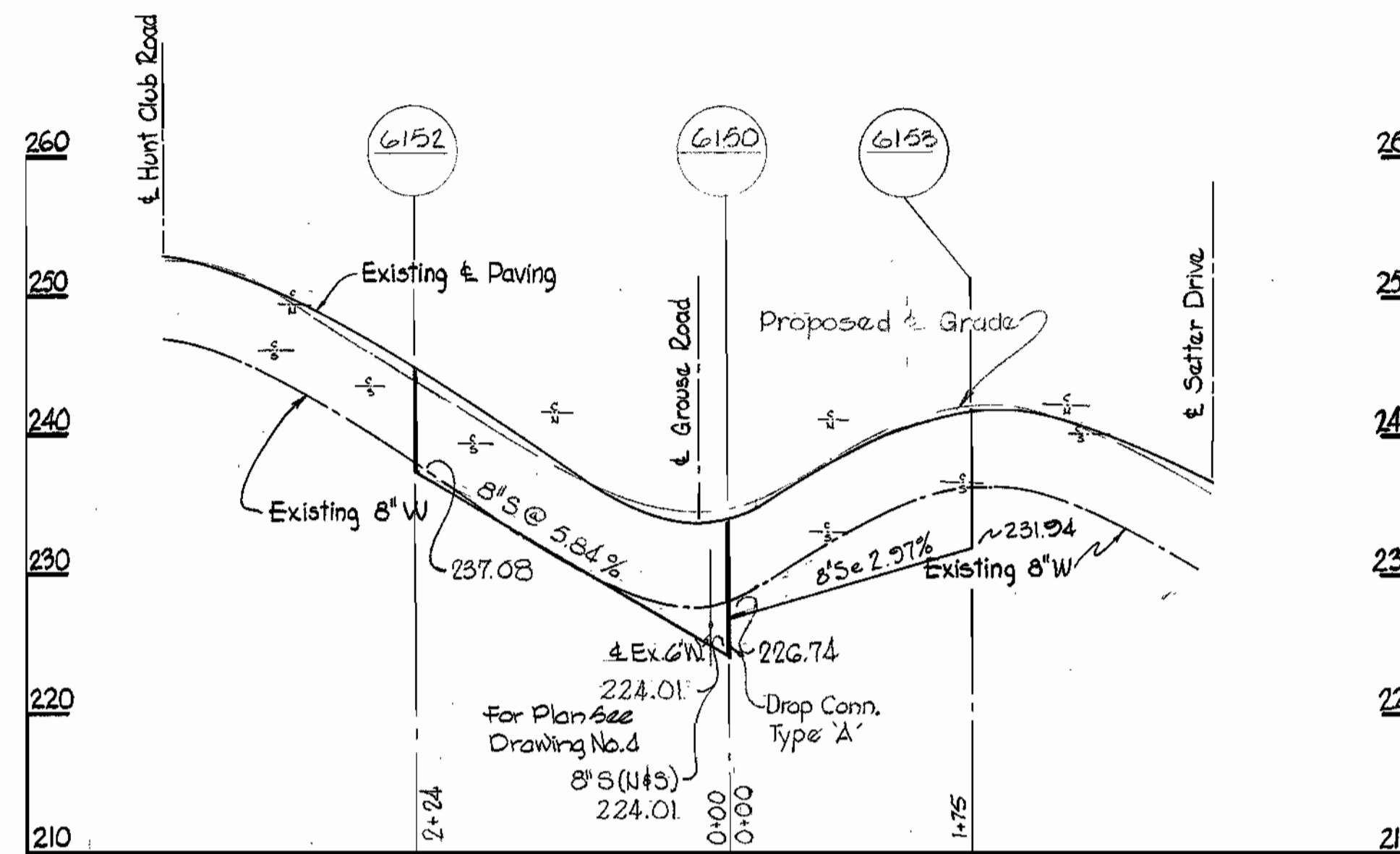
MAR 12 1974 AS BUILT

WS 348-S/5

PHEASANT DRIVE

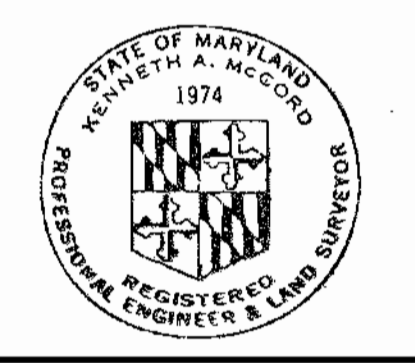
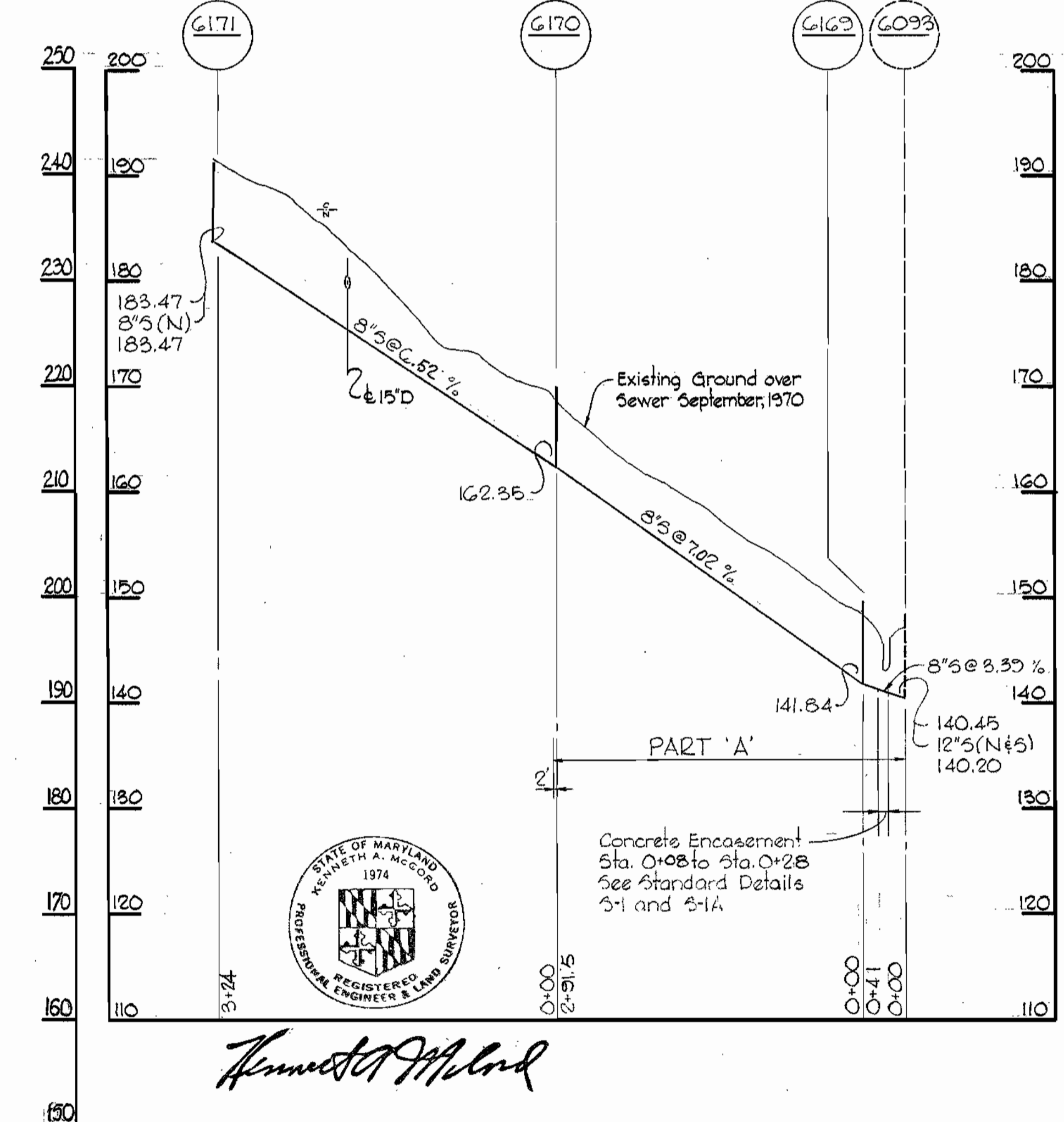
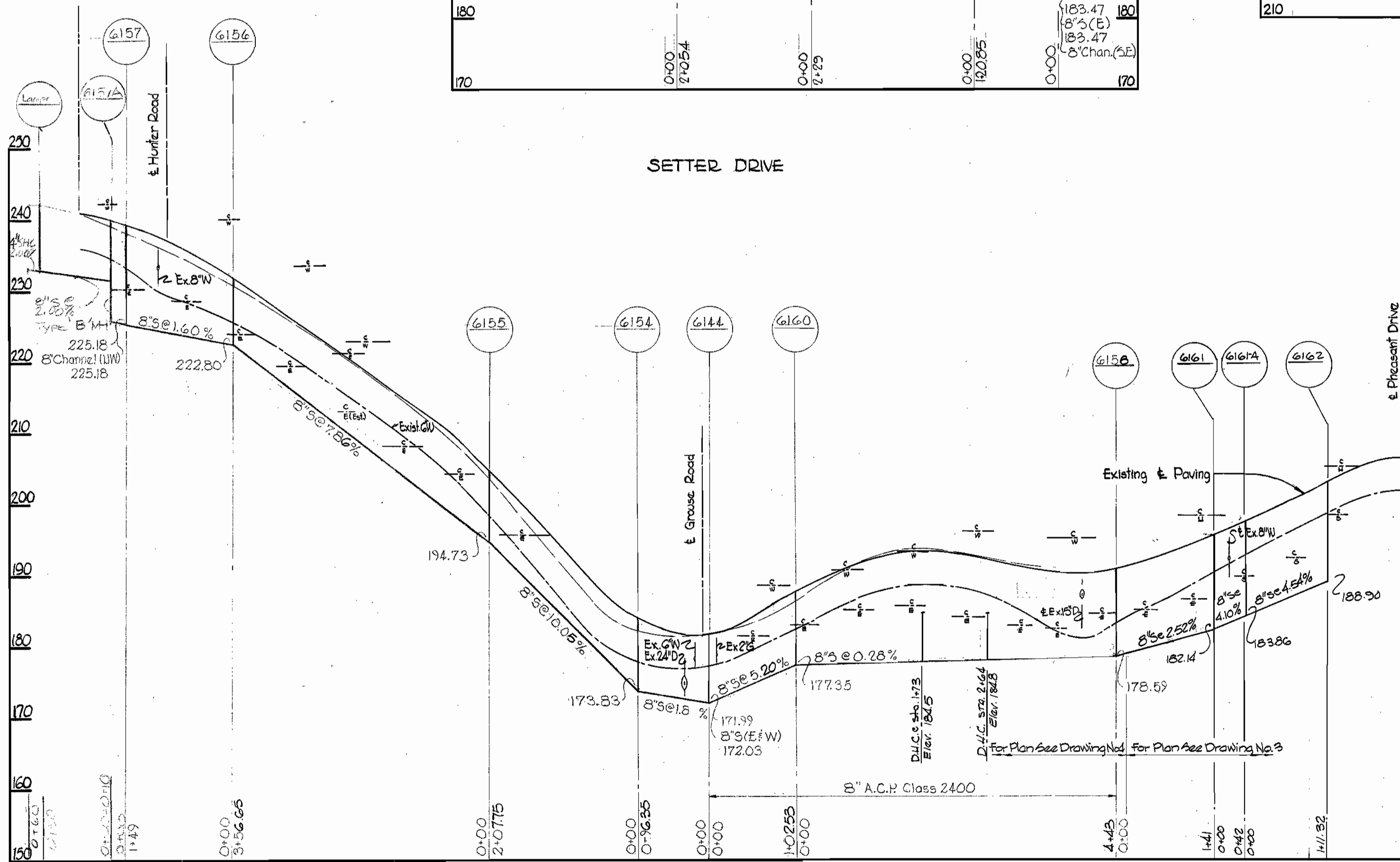


HUNTER ROAD



All Sewer
A.C.P. Class 2400

SETTER DRIVE



Kenneth M. Lind

Hunt Club Collecting Sewers
Contract No. 348-S

WHITMAN, REQUARDT & ASSOCIATES
ENGINEERS
1304 ST. PAUL ST.
BALTIMORE, MARYLAND

DEPARTMENT OF PUBLIC WORKS
HOWARD COUNTY, MARYLAND
8-25-70
W. O. Filler
CHIEF-BUREAU OF WATER AND SEWER

CONTRACT NO. 348-S

PROFILES OF
SEWER MAINS

HUNT CLUB COLLECTING SEWERS

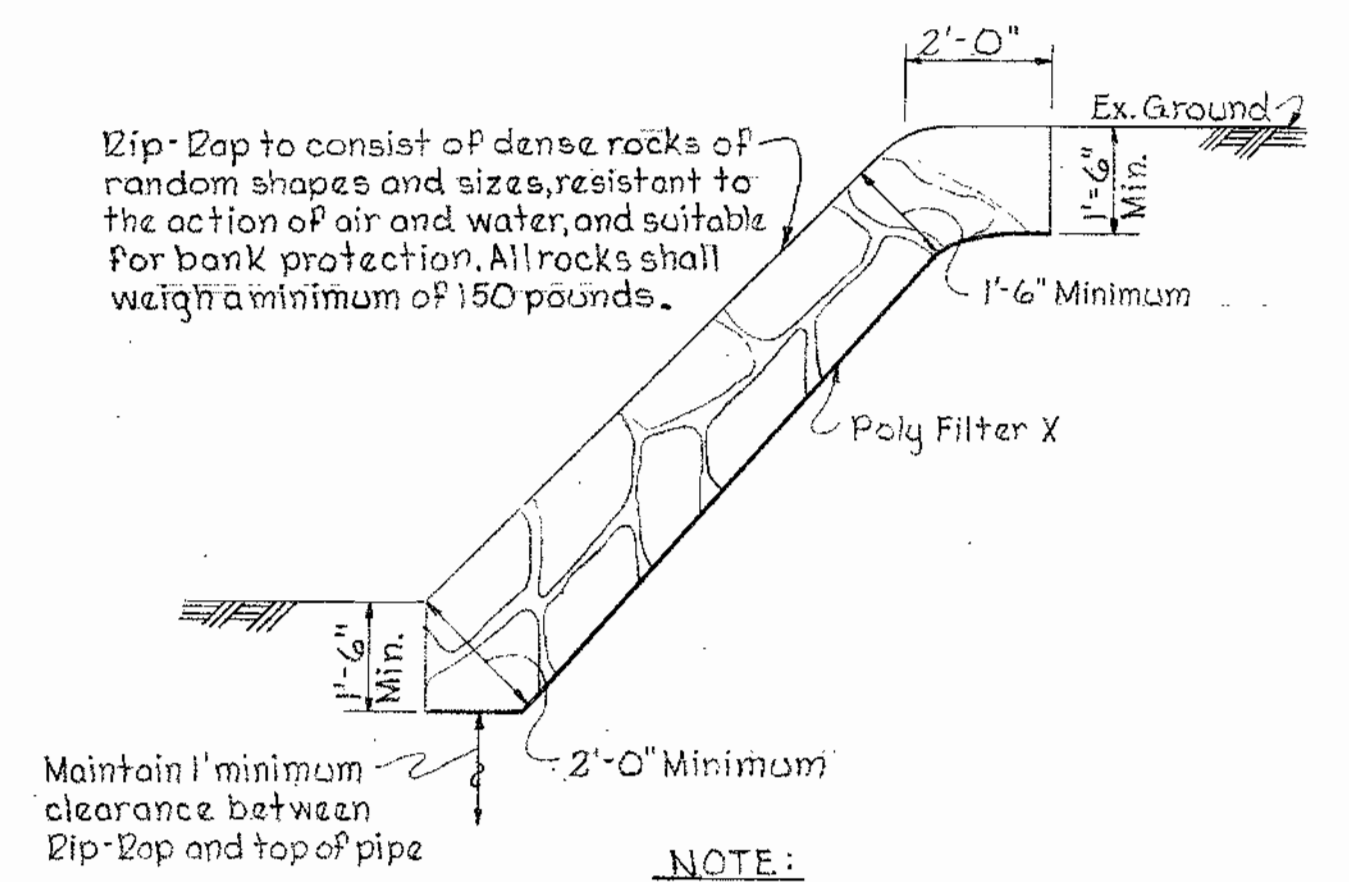
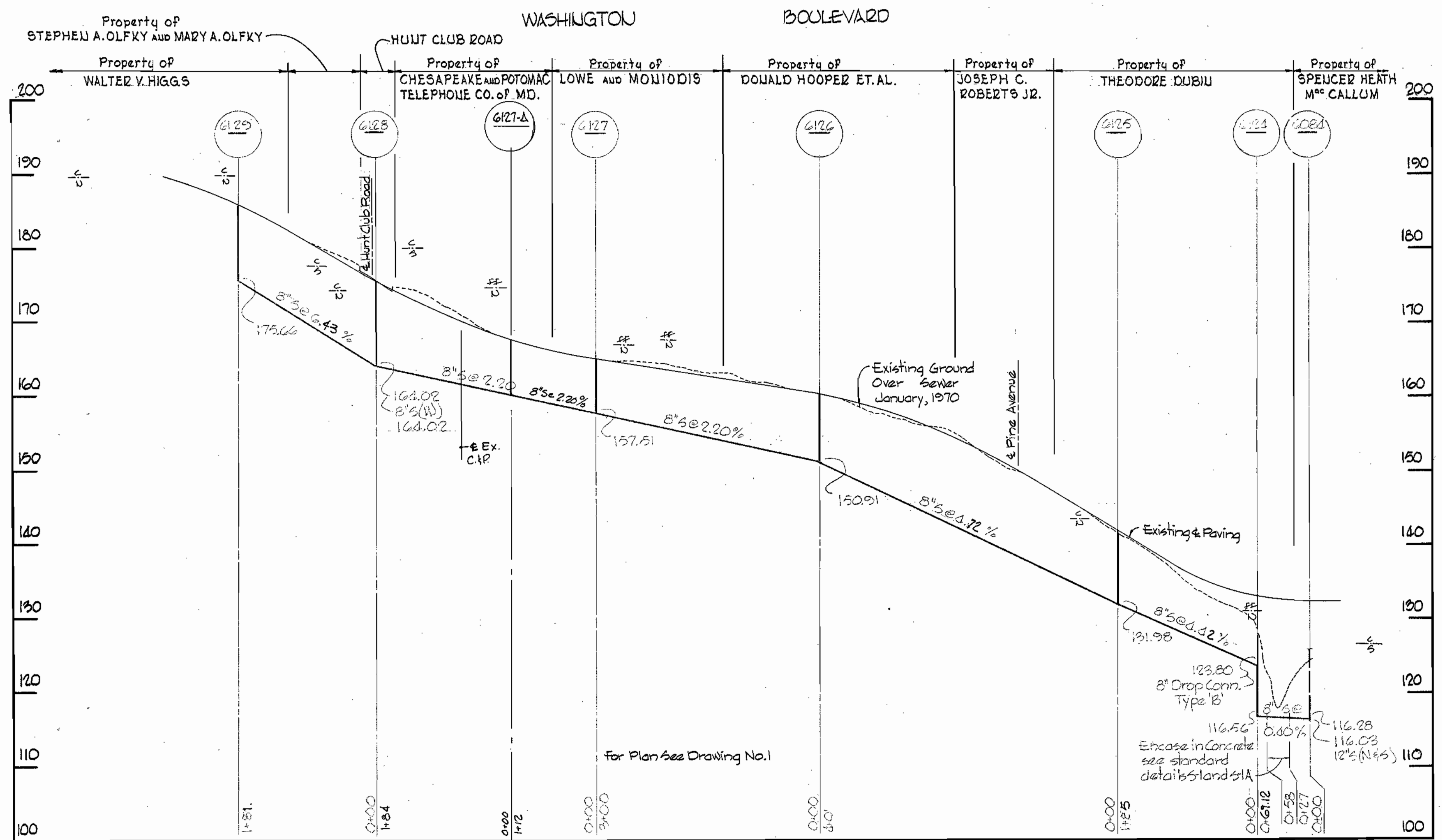
DRAWING
NO. 6
OF 7
SCALE
H:1"=100'
V:1"=10'

W. O. 6185-2

AS-BUILT 5/23

MAR 12 1974 AS-BUILT

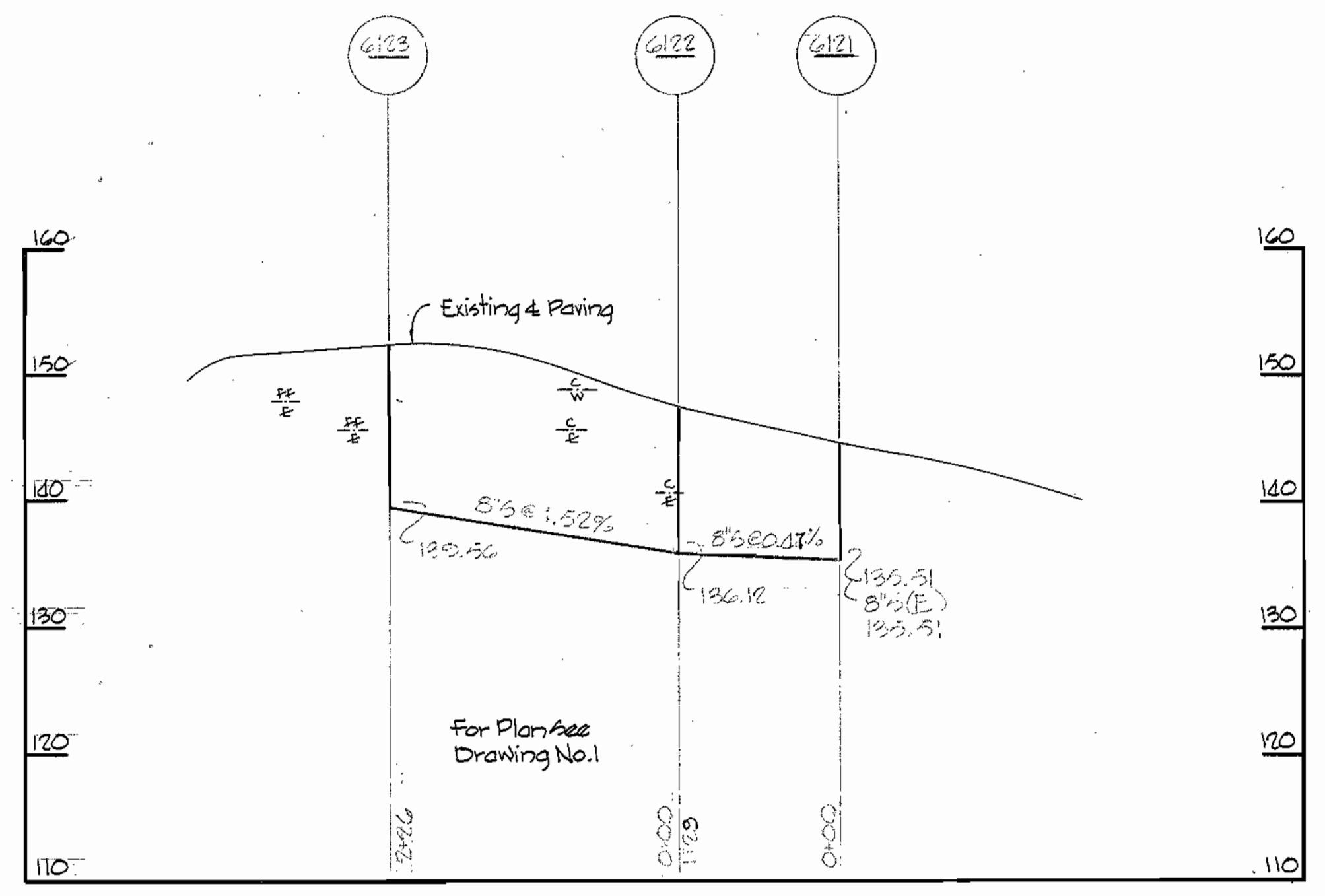
WS 348-S/6



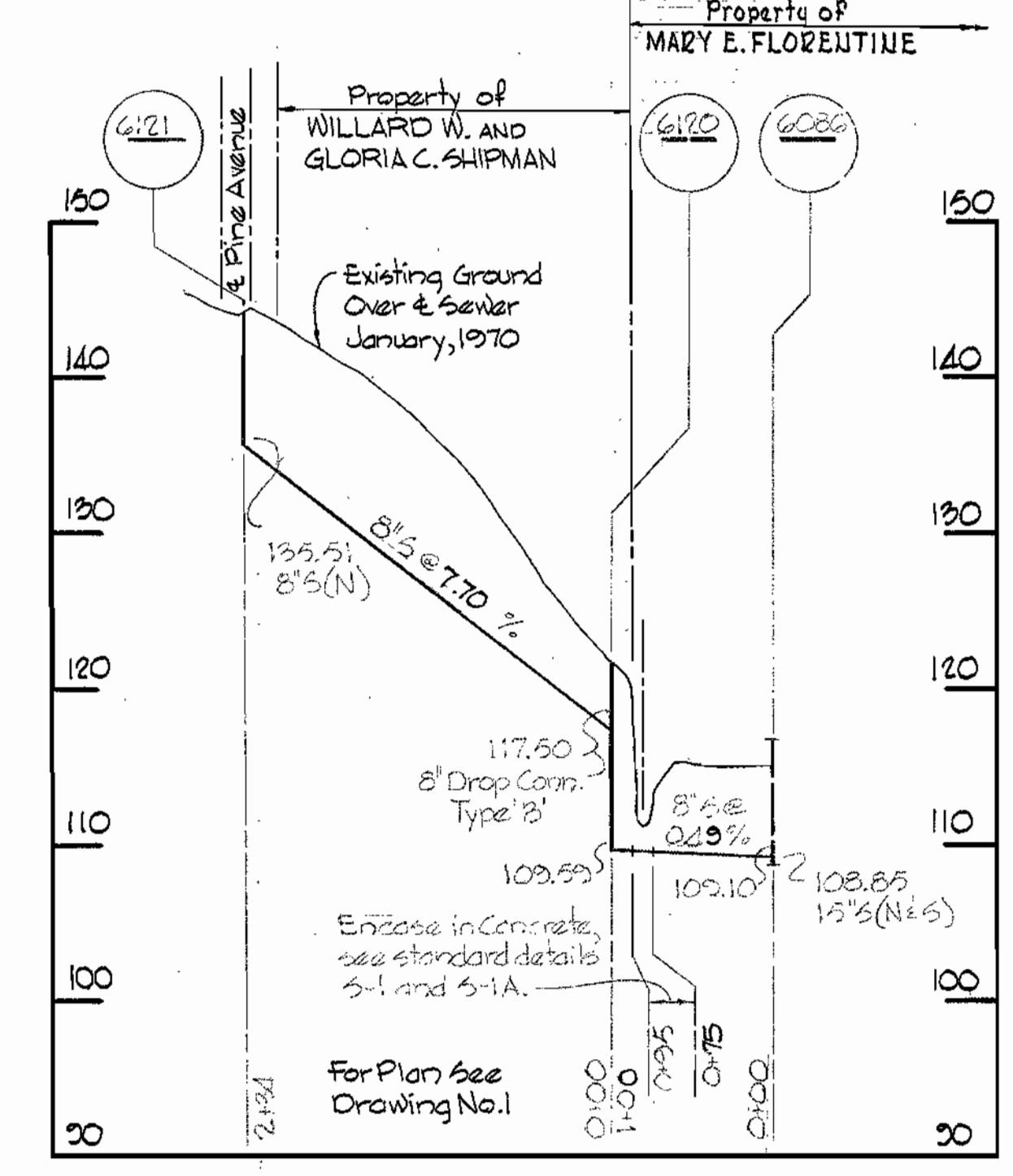
RIP-DAP DETAIL
Scale: 3/8" = 1'-0"

NOTE:
Poly Filter X shall be as manufactured by Carthage Mills Inc. Erosion Control Division, 124 W 66th Street, Cincinnati, Ohio, or approved equal.

PINE AVENUE



PINE AVENUE OUTFALL



All Sewer
AC.P Class 2400



Kenneth J. McLeod

Hunt Club Collecting Sewers
Contract No. 348-S

WHITMAN, REQUARDT & ASSOCIATES ENGINEERS 1304 ST. PAUL ST. BALTIMORE, MARYLAND	DEPARTMENT OF PUBLIC WORKS HOWARD COUNTY, MARYLAND 8-25-70 DATE <i>W. O. Albert</i> CHIEF-BUREAU OF WATER AND SEWER	CONTRACT NO. <u>348-S</u>	PROFILES OF SEWER MAINS	HUNT CLUB COLLECTING SEWERS	DRAWING NO. <u>7</u>	SCALE H: 1" = 100' V: 1" = 10'
					OF <u>7</u>	

W. O. 6185-2

MAR 12 1974 AS BUILT

WS 348-S/7