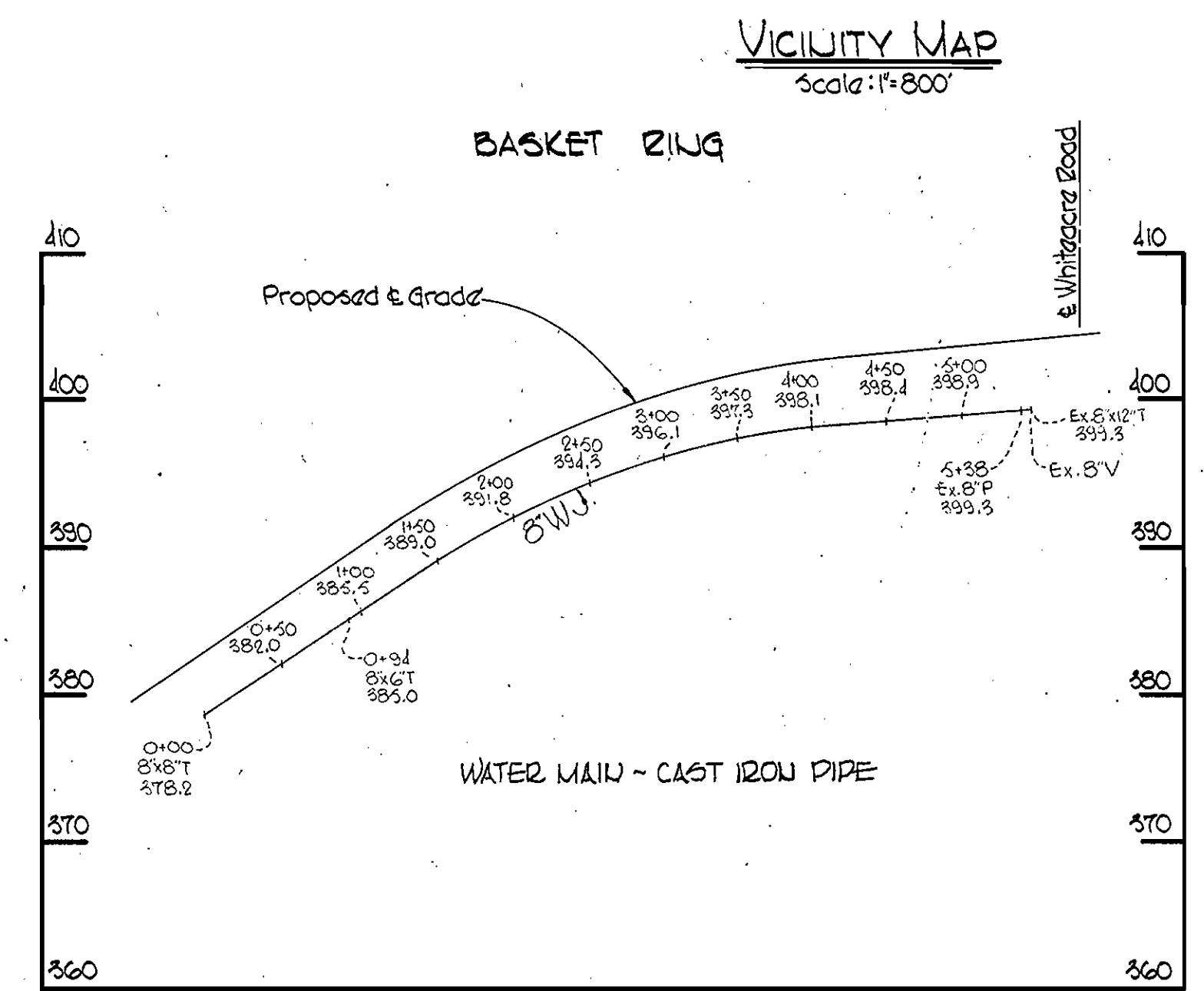
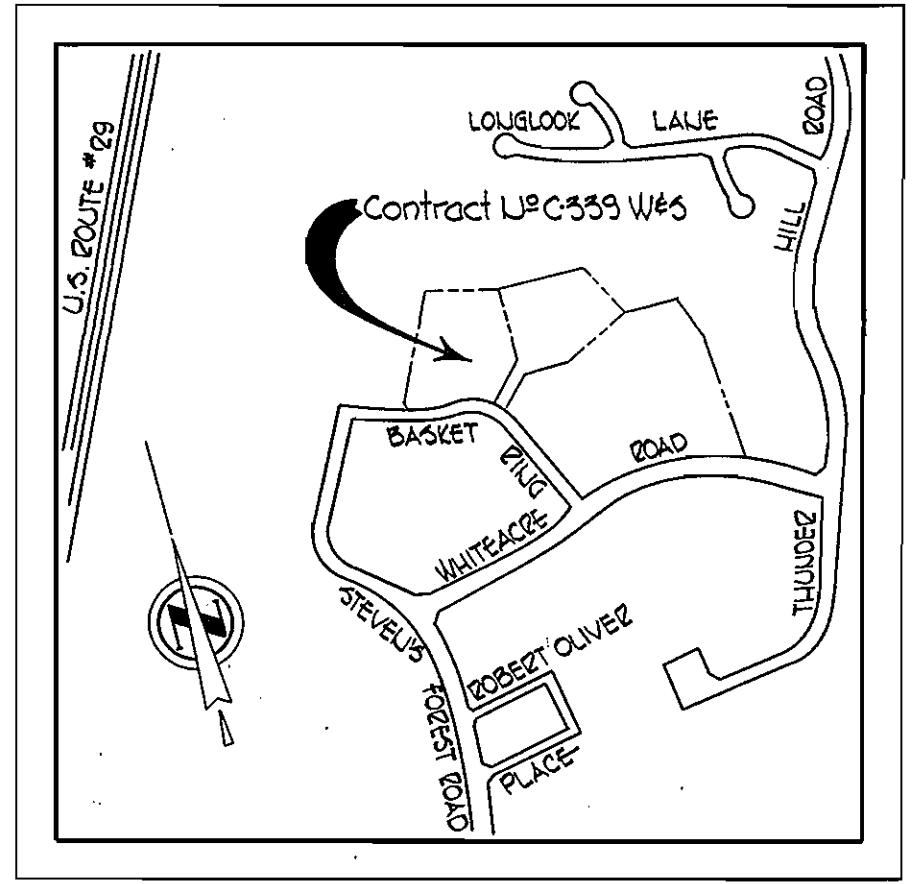
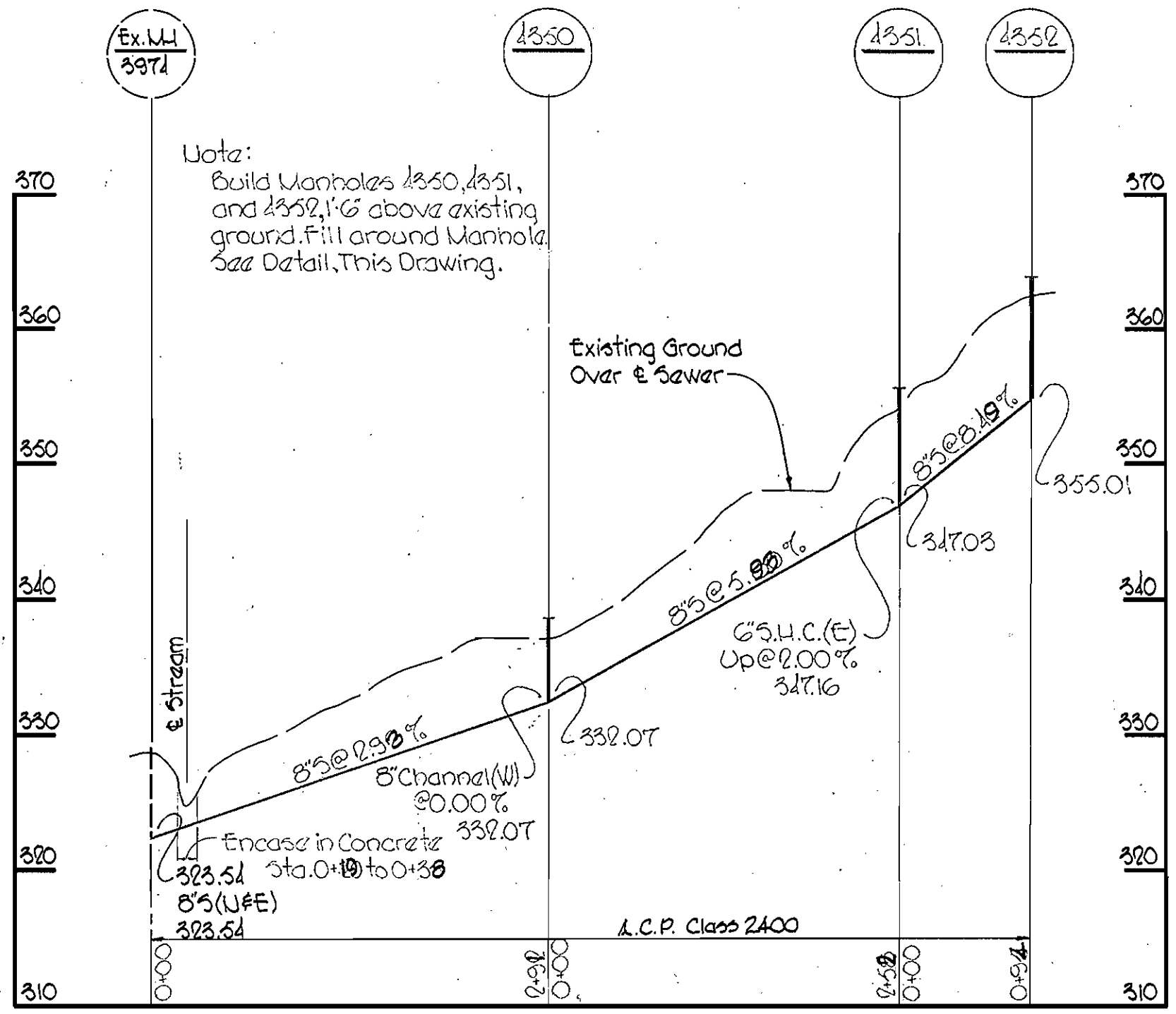
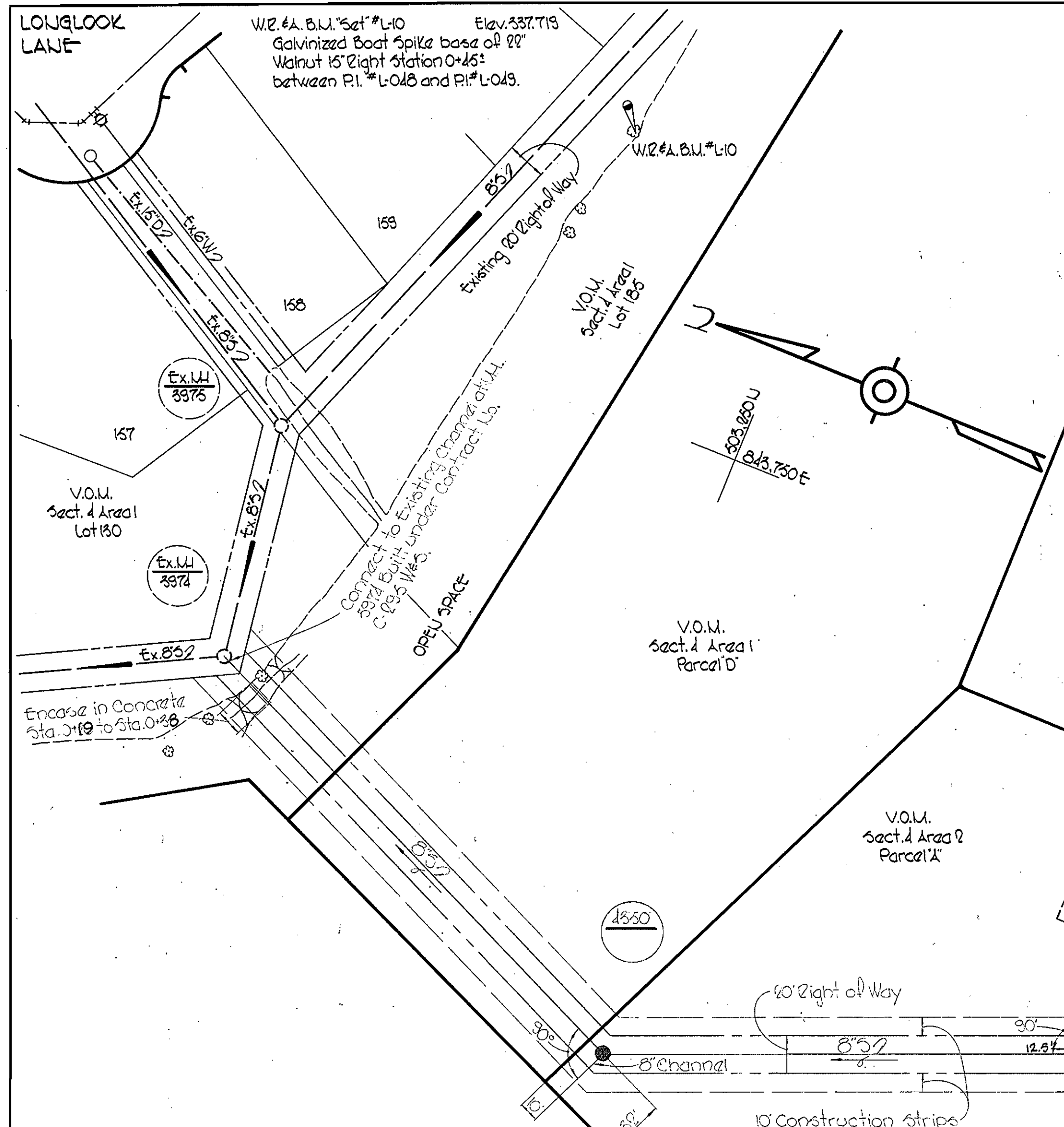


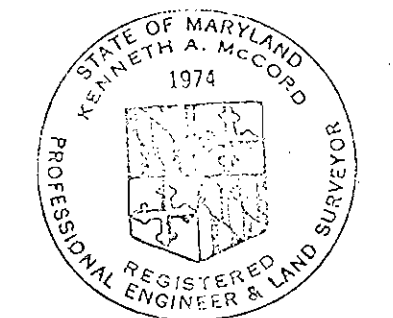
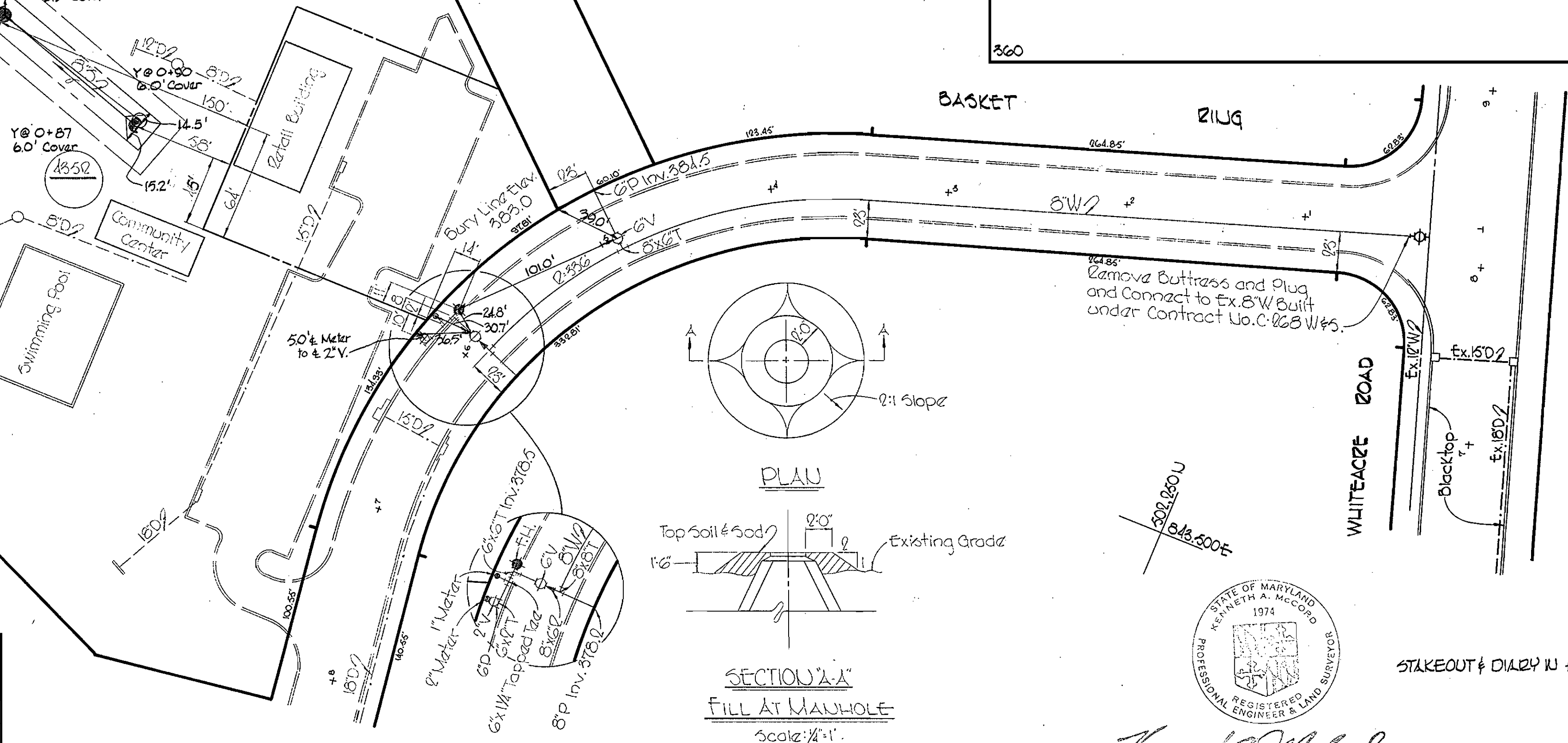
WS 339 W-S/1



GENERAL NOTES

1. Approximate location of existing mains are shown. The Contractor shall take all necessary precautions to protect existing mains and services and maintain uninterrupted supply. Any damage incurred shall be repaired immediately.
2. All pipe elevations shown are invert elevations.
3. The Contractor shall locate existing utilities a minimum of two weeks in advance of construction operations in vicinity of utilities.
4. For all standard details see standards bound in specifications.
5. All water mains to be C.I.P. or D.I.P. and have a minimum of 2' cover.
6. Block all fittings with concrete, see standards bound in specifications.
7. Bury Line elevations on fire hydrants shall be set to the elevations shown on the drawings.
8. All fire hydrants shall be strapped to the tee and shall be buttressed with concrete in accordance with standard Details.
9. Clear all utilities by a minimum of 6', clear all poles by 2'-0" minimum or tunnel as required.
10. The Contractor shall provide a joint in all sewer mains within 2'-0" of exterior manhole walls.
11. All sewer pipe shall be V.C.P.X., C.S.P.X. or A.C.P. Class 2400 unless otherwise noted.
12. All horizontal and vertical controls are based on Maryland State Datum.

QUANTITIES	
8" Sewer	650'
6" Water	550'
6" Water	50'
Fire Hydrants	1



Kenneth A. McCord

STAKEOUT & DIMEN IN F.B. # 1585

WHITMAN, REQUARDT & ASSOCIATES ENGINEERS 1304 ST. PAUL ST. BALTIMORE, MARYLAND	DEPARTMENT OF PUBLIC WORKS HOWARD COUNTY, MARYLAND <i>W. O. Peck</i> CHIEF-BUREAU OF WATER AND SEWER	CONTRACT NO. C-339W85	PLAN AND PROFILE OF WATER & SEWER MAINS	COLUMBIA VILLAGE OF OAKLAND MILLS ELECTION DISTRICT GUILFORD No. 6	DRAWING NO. 1 OF 1	SCALE AS SHOWN
					AS BUILT	JULY 1, 1970

W. O. 6023-2