

QUANTITIES	
15" Sewer	1,730'
18" Sewer	4,400'

**CONTRACT C-338-S**  
**STEVEN'S FOREST INTERCEPTOR**  
**HOWARD COUNTY, MARYLAND**  
**DEPARTMENT OF PUBLIC WORKS**



*Herbert M. ...*

STAKEOUT and DIARY in FB. # 4628

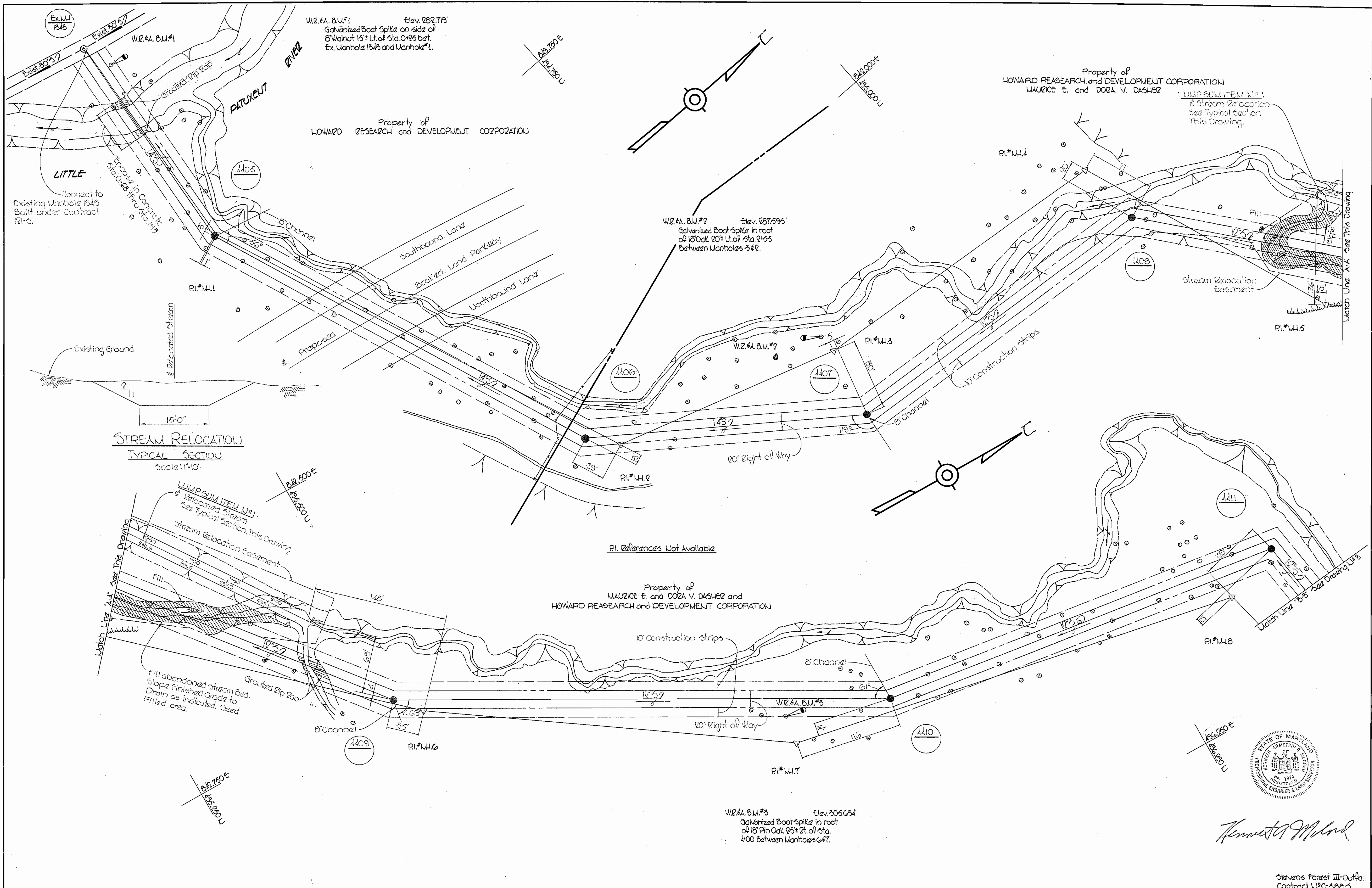
WHITMAN, REQUARDT & ASSOCIATES ENGINEERS 1304 ST. PAUL ST. BALTIMORE, MARYLAND	DEPARTMENT OF PUBLIC WORKS HOWARD COUNTY, MARYLAND <i>Feb 3, 1970</i> DATE	CONTRACT NO. <b>C-338-S</b>	LOCATION MAP	COLUMBIA <b>STEVEN'S FOREST INTERCEPTOR</b> ELECTION DISTRICT GUILFORD NO. 6	DRAWING NO. <b>1</b> OF <b>4</b>	SCALE <b>1"=1200'</b>
-----------------------------------------------------------------------------------------	-------------------------------------------------------------------------------------	-----------------------------	--------------	------------------------------------------------------------------------------------	-------------------------------------	--------------------------

W. O. 6023-2

AS BUILT September 25, 1970

WS 338-S/1

WS 338-S/2



*Anneta M. Lord*

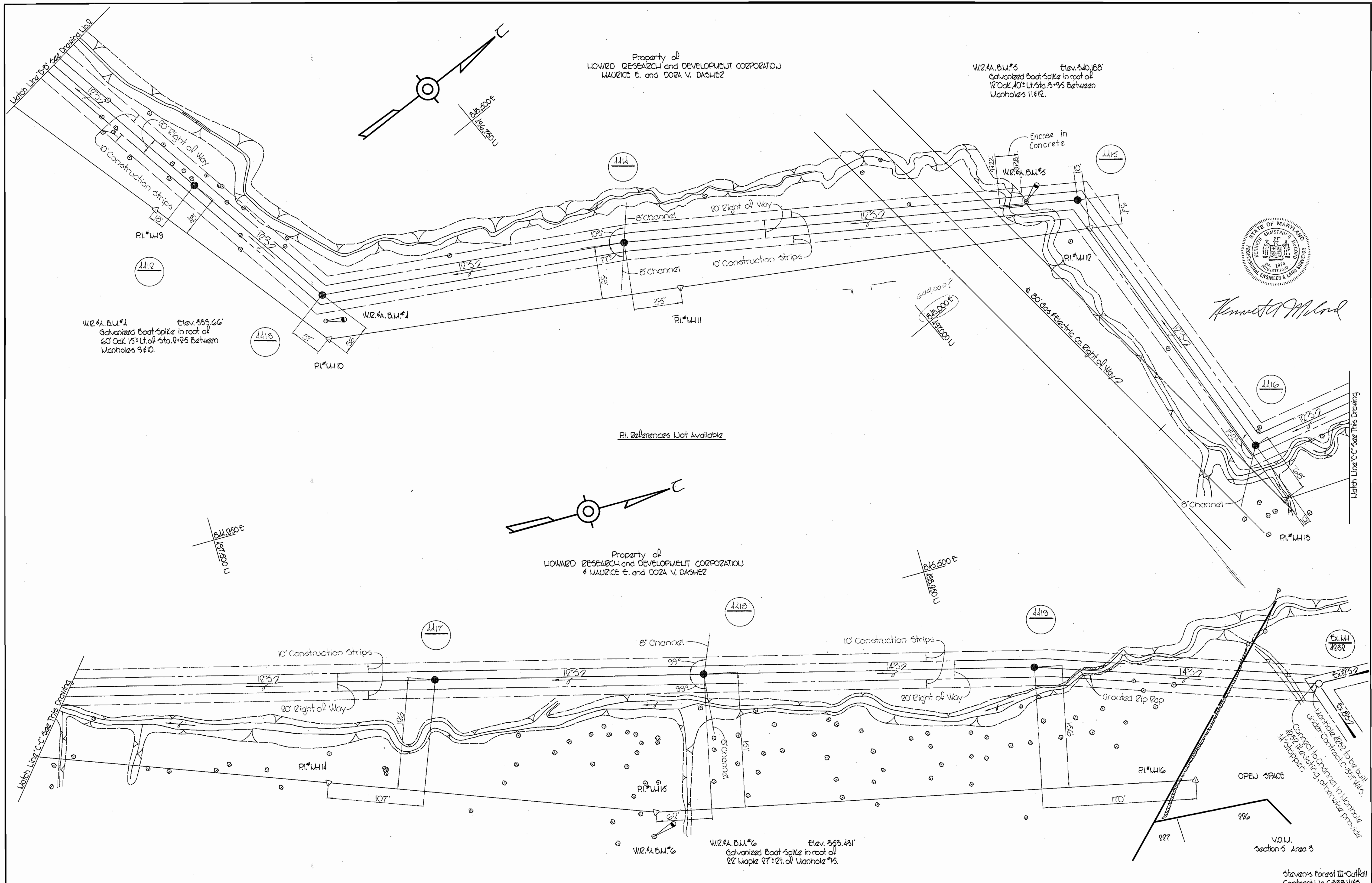
Stevens Forest III-Outlet  
Contract WPC-308-S

WHITMAN, REQUARDT & ASSOCIATES ENGINEERS 1304 ST. PAUL ST. BALTIMORE, MARYLAND	DEPARTMENT OF PUBLIC WORKS HOWARD COUNTY, MARYLAND DATE: Feb 3 1970 W. O. Pulver CHIEF-BUREAU OF WATER AND SEWER	CONTRACT NO. C-338-S	PLAN OF SEWER MAINS	COLUMBIA STEVEN'S FOREST INTERCEPTOR ELECTION DISTRICT GUILFORD NO. 6	DRAWING NO. 2 OF 4 SCALE 1" = 50' 484-481 484-482 486-482 486-487
-----------------------------------------------------------------------------------------	------------------------------------------------------------------------------------------------------------------------------	----------------------	------------------------	-----------------------------------------------------------------------------	----------------------------------------------------------------------------------

W. O. 6028-2

AS BUILT September 25, 1970 FB # 1510

WS 338-S/3



*Kenneth A. Milrod*

**WHITMAN, REQUARDT & ASSOCIATES**  
 ENGINEERS  
 1304 ST. PAUL ST.  
 BALTIMORE, MARYLAND

**DEPARTMENT OF PUBLIC WORKS**  
 HOWARD COUNTY, MARYLAND  
 DATE: Feb 3 1970  
*W. O. Palbert*  
 CHIEF - BUREAU OF WATER AND SEWER

**CONTRACT NO. C-338-S**

**PLAN OF SEWER MAINS**

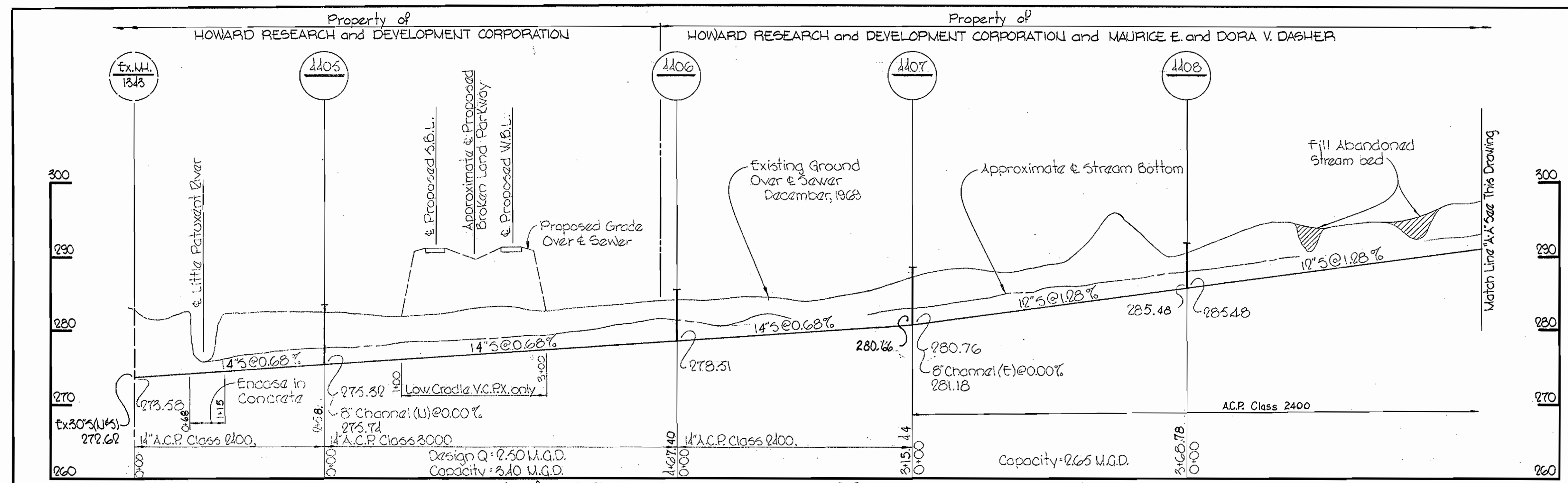
**COLUMBIA STEVEN'S FOREST INTERCEPTOR ELECTION DISTRICT GUILFORD NO. 6**

**DRAWING NO. 3 OF 4**  
**SCALE 1" = 50'**

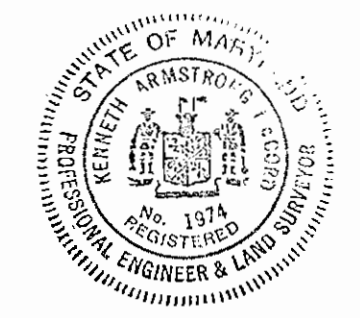
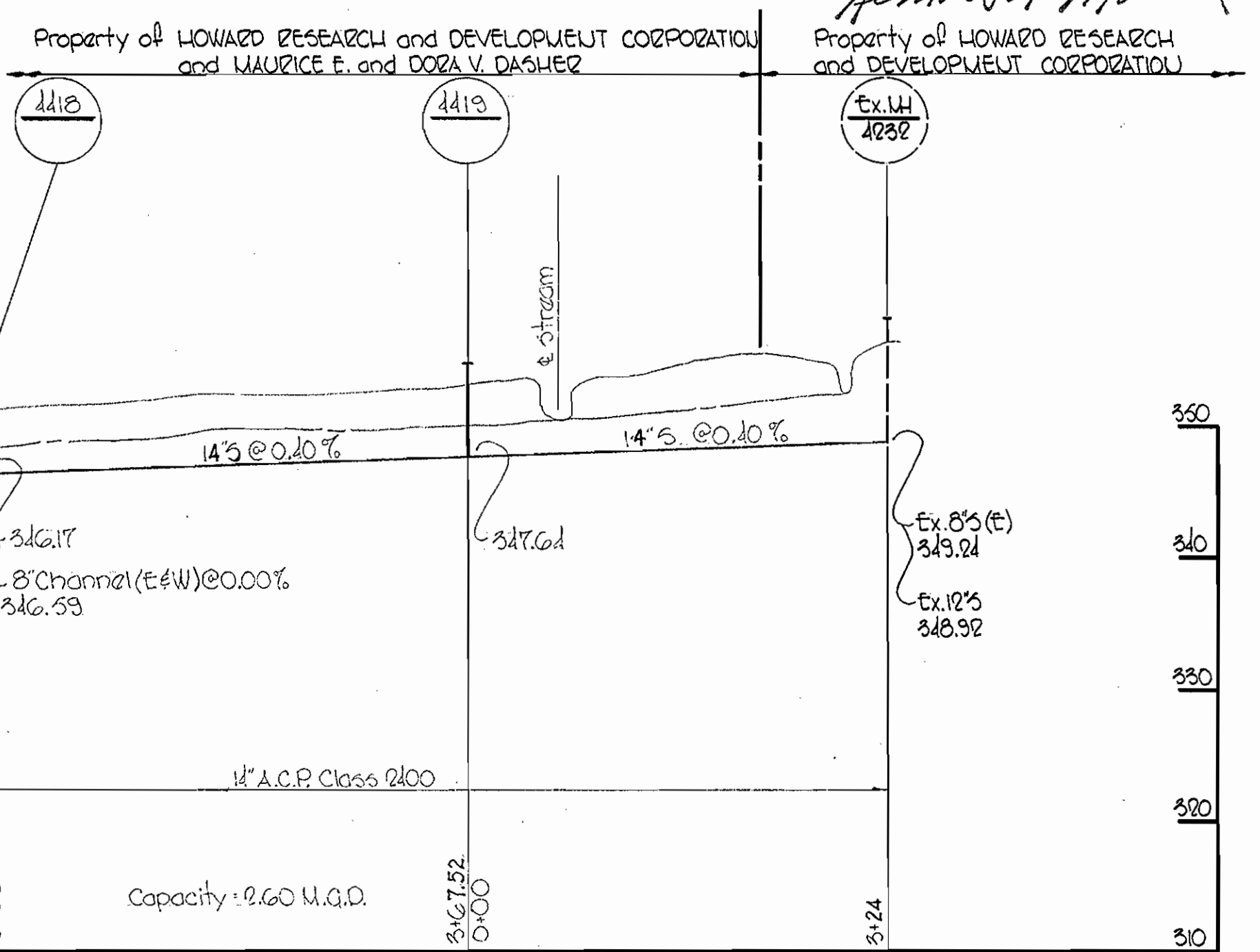
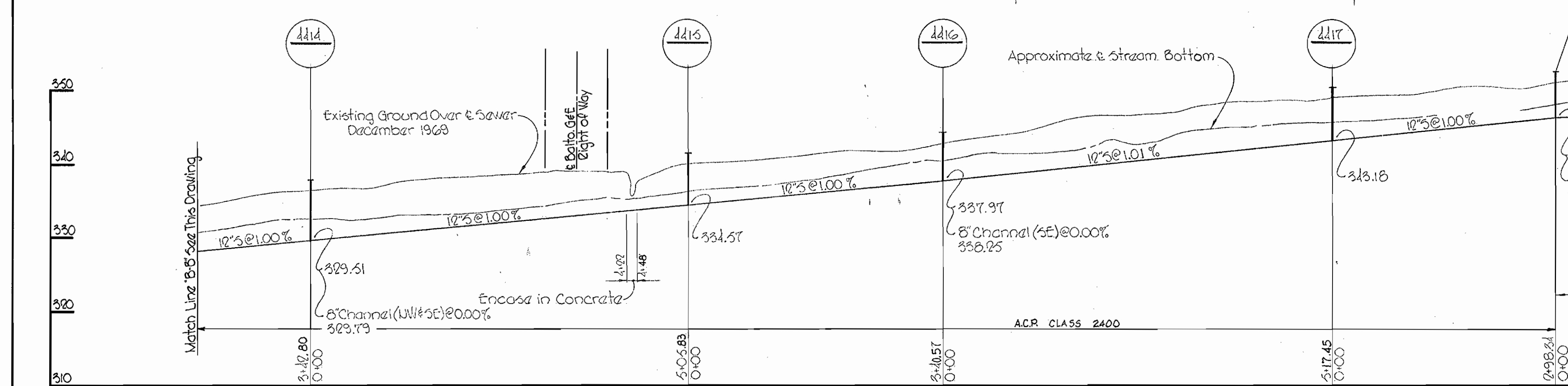
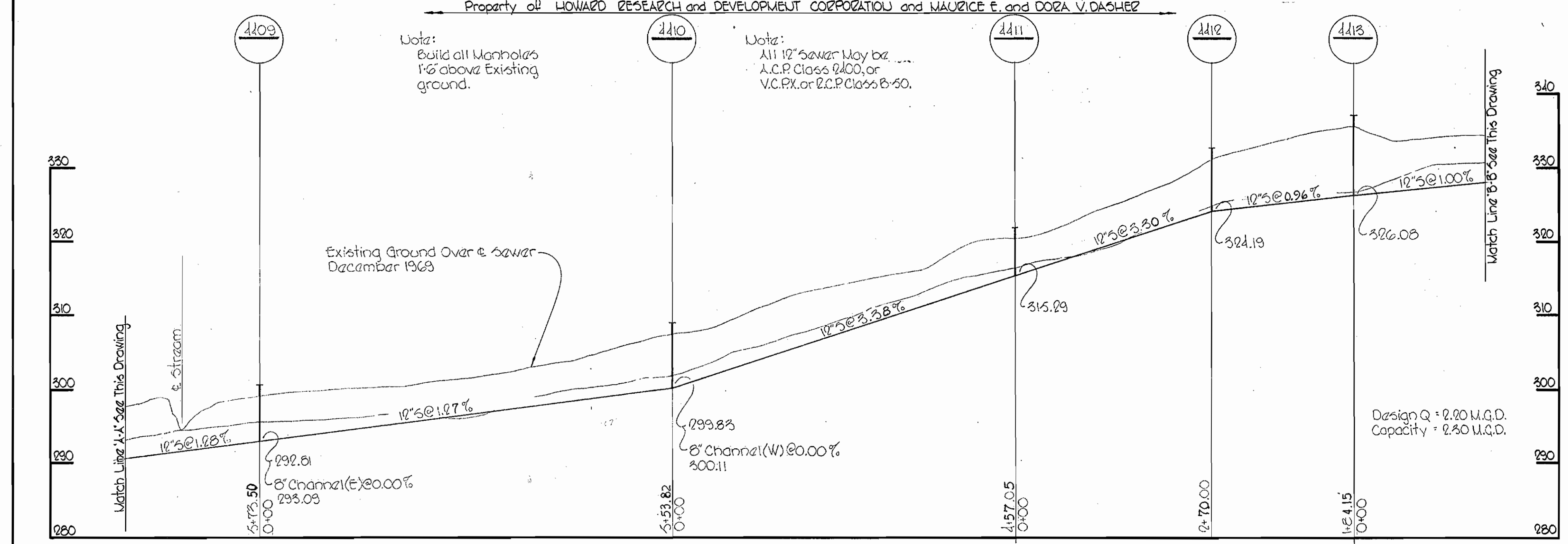
W. O. C. 6023-2

AS BUILT September 25, 1970 F.S. #4640

WS 338-S/4



- ### GENERAL NOTES
1. Approximate location of existing mains are shown. The Contractor shall take all necessary precautions to protect existing mains and services and maintain uninterrupted supply. Any damage incurred shall be repaired immediately.
  2. All pipe elevations shown are invert elevations.
  3. The Contractor shall locate existing utilities a minimum of two weeks in advance of construction operations in vicinity of utilities.
  4. For all standard details see standards bound in Specifications.
  5. Clear all utilities by a minimum of 6'; Clear all poles by 20' minimum, or tunnel as required.
  6. All horizontal and vertical controls are based on Maryland State Datum.
  7. The Contractor shall provide a joint in all sewer mains within 20' of exterior manhole walls.
  8. All sewer pipe shall be V.C.P.X., C.S.P.X., or A.C.P. Class 2400 unless otherwise noted.



*Kenneth M. Wood*  
 Property of HOWARD RESEARCH and DEVELOPMENT CORPORATION and MAURICE E. and DORA V. DASHER

**WHITMAN, REQUARDT & ASSOCIATES**  
 ENGINEERS  
 1304 ST. PAUL ST.  
 BALTIMORE, MARYLAND

**DEPARTMENT OF PUBLIC WORKS**  
 HOWARD COUNTY, MARYLAND  
 DATE Feb 3 1970  
*W. O. Falbert*  
 CHIEF-BUREAU OF WATER AND SEWER

**CONTRACT NO. C-338-S**

**PROFILES OF SEWER MAINS**

**COLUMBIA STEVEN'S FOREST INTERCEPTOR ELECTION DISTRICT GUILFORD NO. 6**

**DRAWING NO. 4 OF 4**  
**SCALE H:1"=100' V:1"=10'**

W. O. 6023-2

AS BUILT September 25, 1970