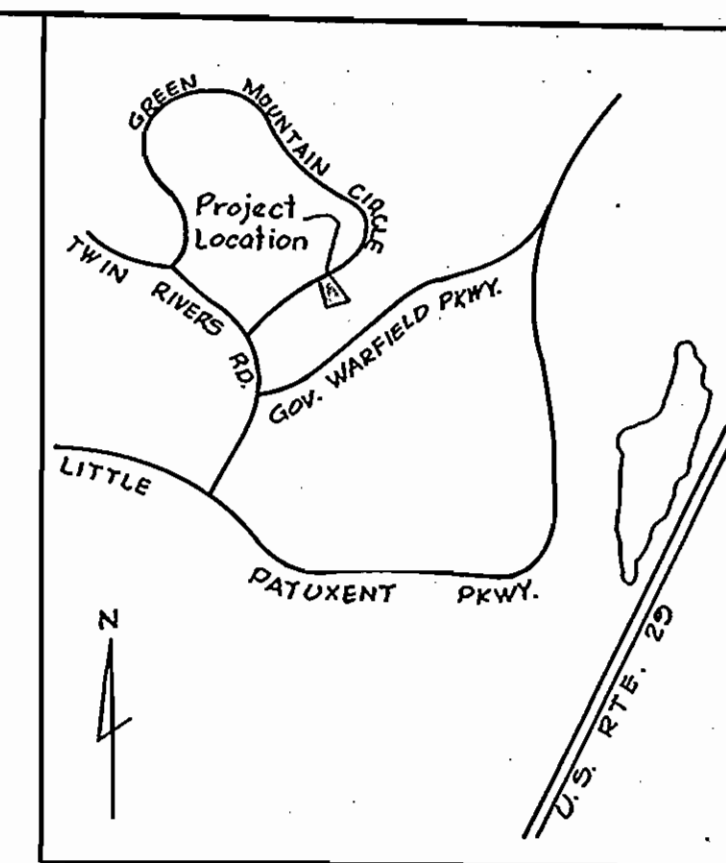
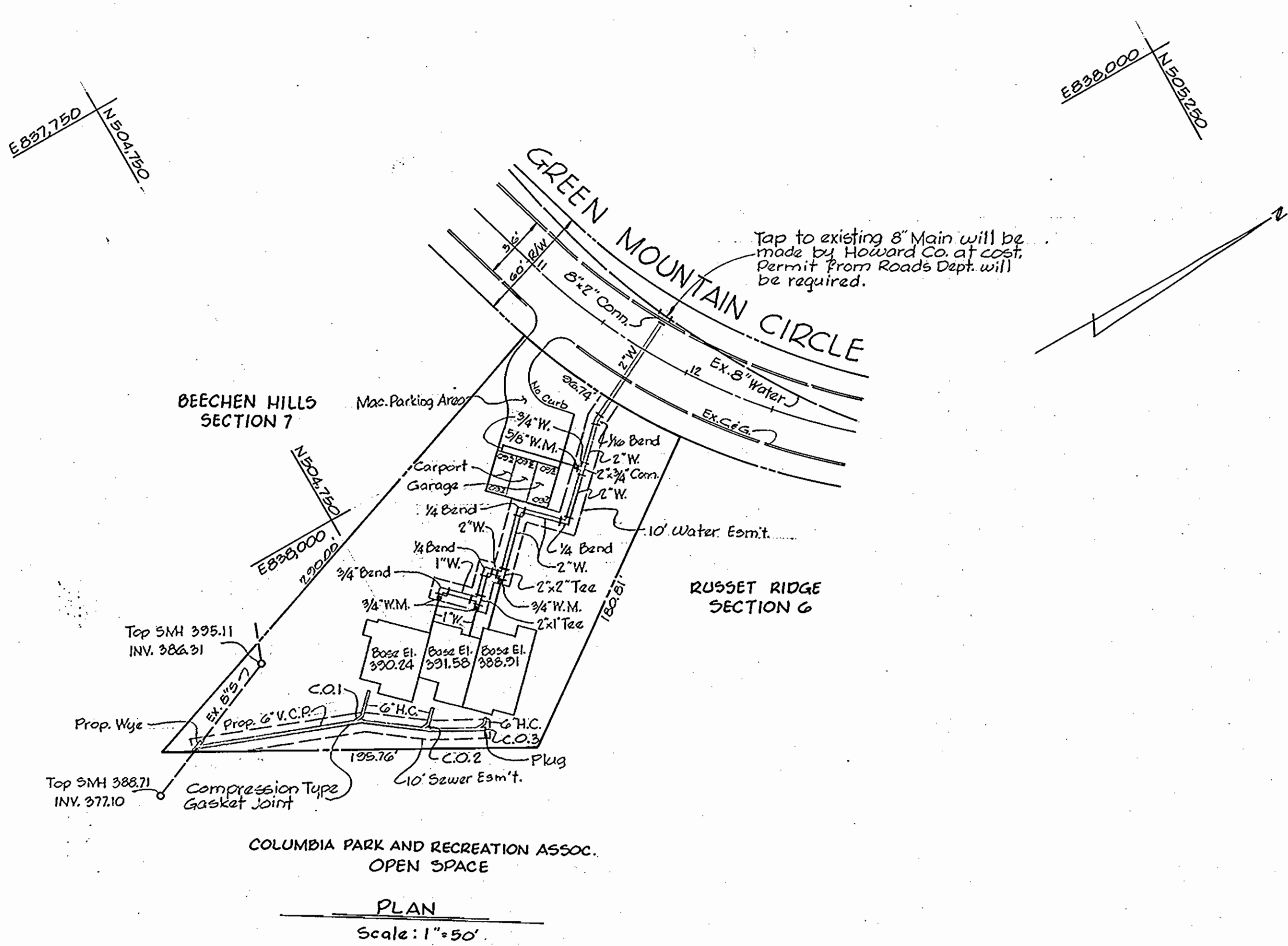


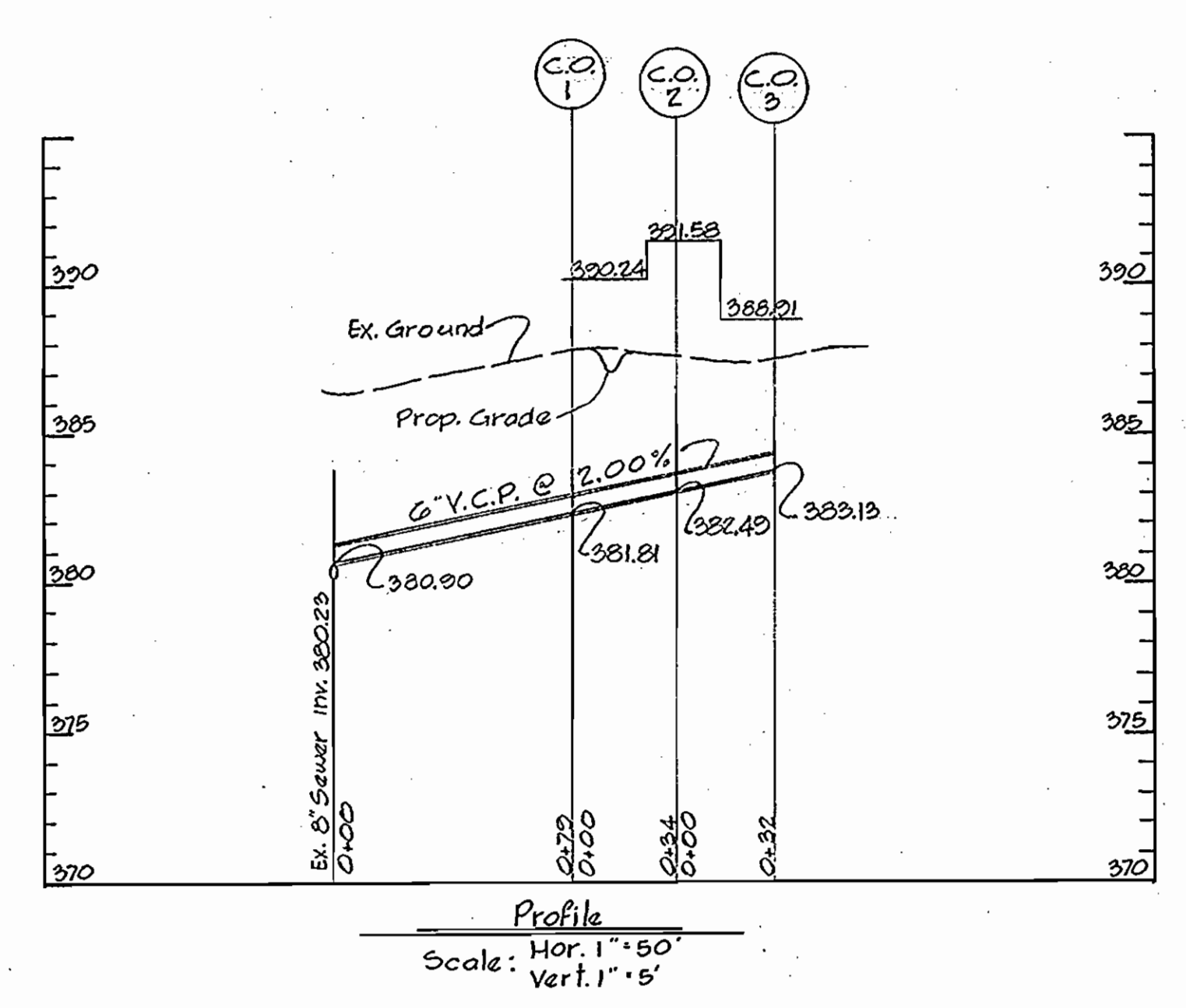
GENERAL NOTES

1. Approximate location of existing mains are shown. The Contractor shall take all necessary precautions to protect existing mains and services and maintain uninterrupted supply. Any damage incurred shall be repaired immediately.
2. All pipe elevations are invert. \odot elevations.
3. The Contractor shall locate existing utilities a minimum of two weeks in advance of construction operations in vicinity of utilities.
4. For all standard details see standards bound in specifications.
5. All water mains to have a minimum of 4'-0" cover.
6. Use Buttresses on all bends.
7. All materials and construction details to be in accordance with Howard County specifications.

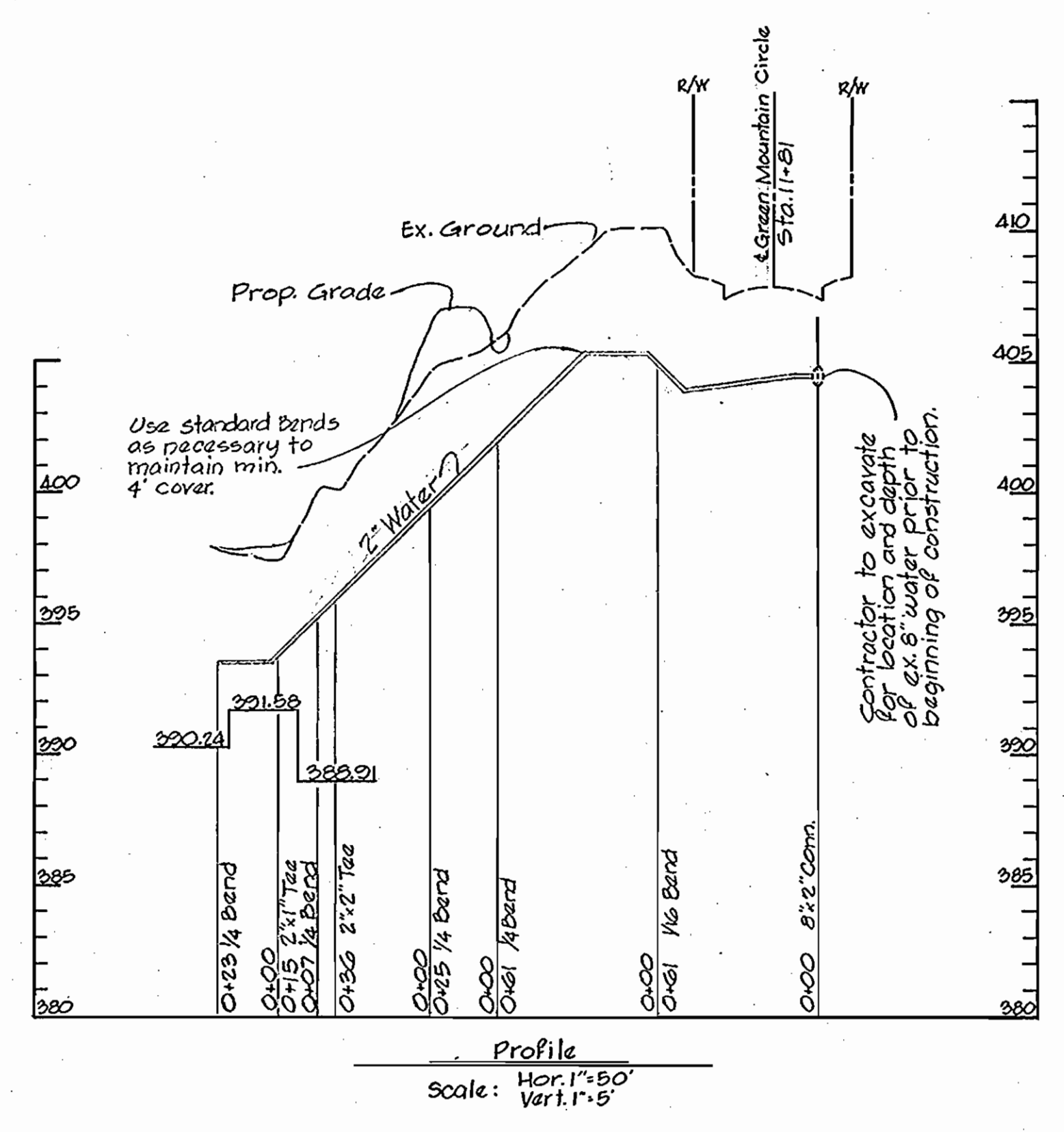


Vicinity Map
Scale: 1" = 2,000'

PLAN
Scale: 1" = 50'



Profile
Scale: Hor. 1" = 50'
Vert. 1" = 5'



Profile
Scale: Hor. 1" = 50'
Vert. 1" = 5'



THE HOWARD RESEARCH & DEV. CORP.
AMERICAN CITY BLDG
COLUMBIA, MARYLAND

HOWARD COUNTY METROPOLITAN COMMISSION
DATE: 4-21-70
W O Filbert
CHIEF ENGINEER

CONTRACT NO. C-336-1055

PLAN OF
WATER & SEWER MAINS

COLUMBIA
VILLAGE OF WILDE LAKE SEC. 6 AREA 5 LOT 1
ELECTION DISTRICT-CLARKSVILLE NO.5

CONTRACT No 336-5
Village of Wilde Lake
DRAWING NO. 1 OF 1
SCALE as shown

WS 336 W-5/1

SUSPENDED

SUSPENDED