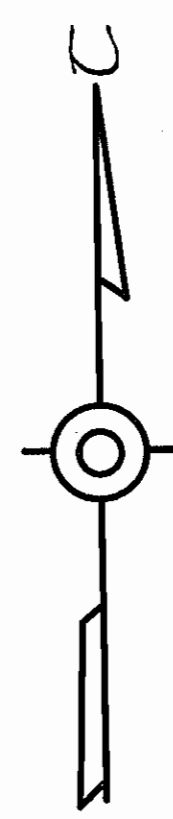
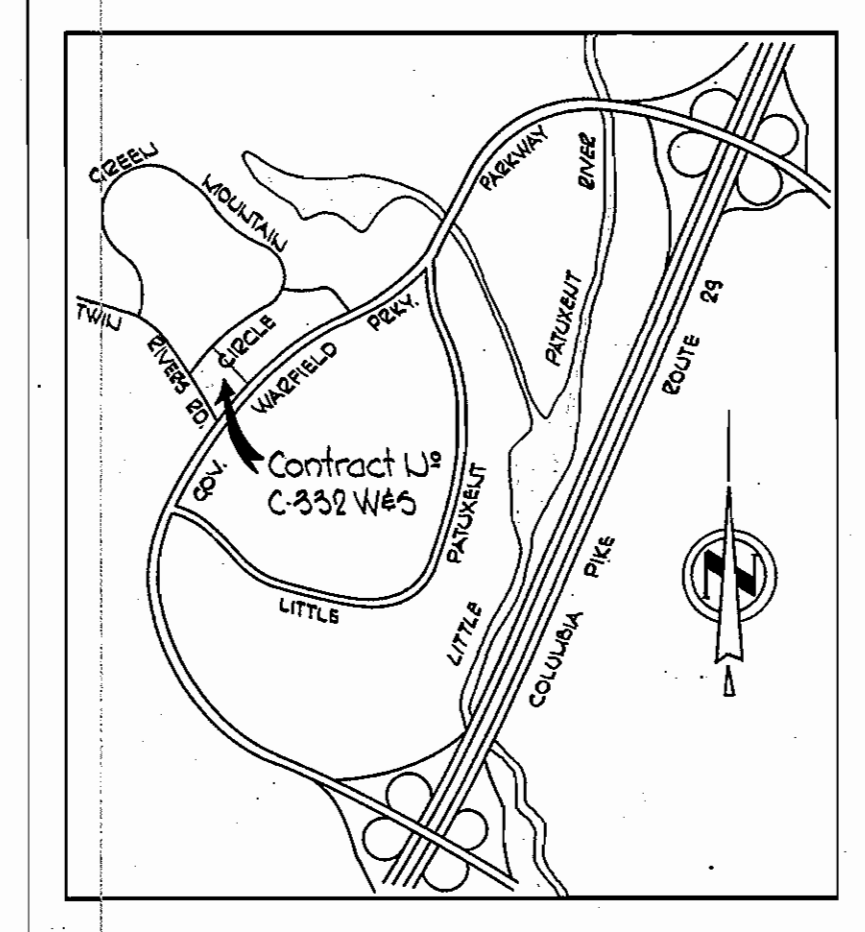


WS 332-W4S/1



Note:  
 Pipe Elevations for Manholes 4215,  
 and 4220 thru 4222 were developed  
 from Greenhorn #0' Utra, Inc.,  
 sheet 1 of 4, Dated 6-6-68.

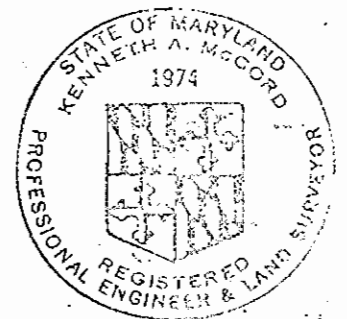


VICINITY MAP  
 Scale 1"=2,330'

GENERAL NOTES

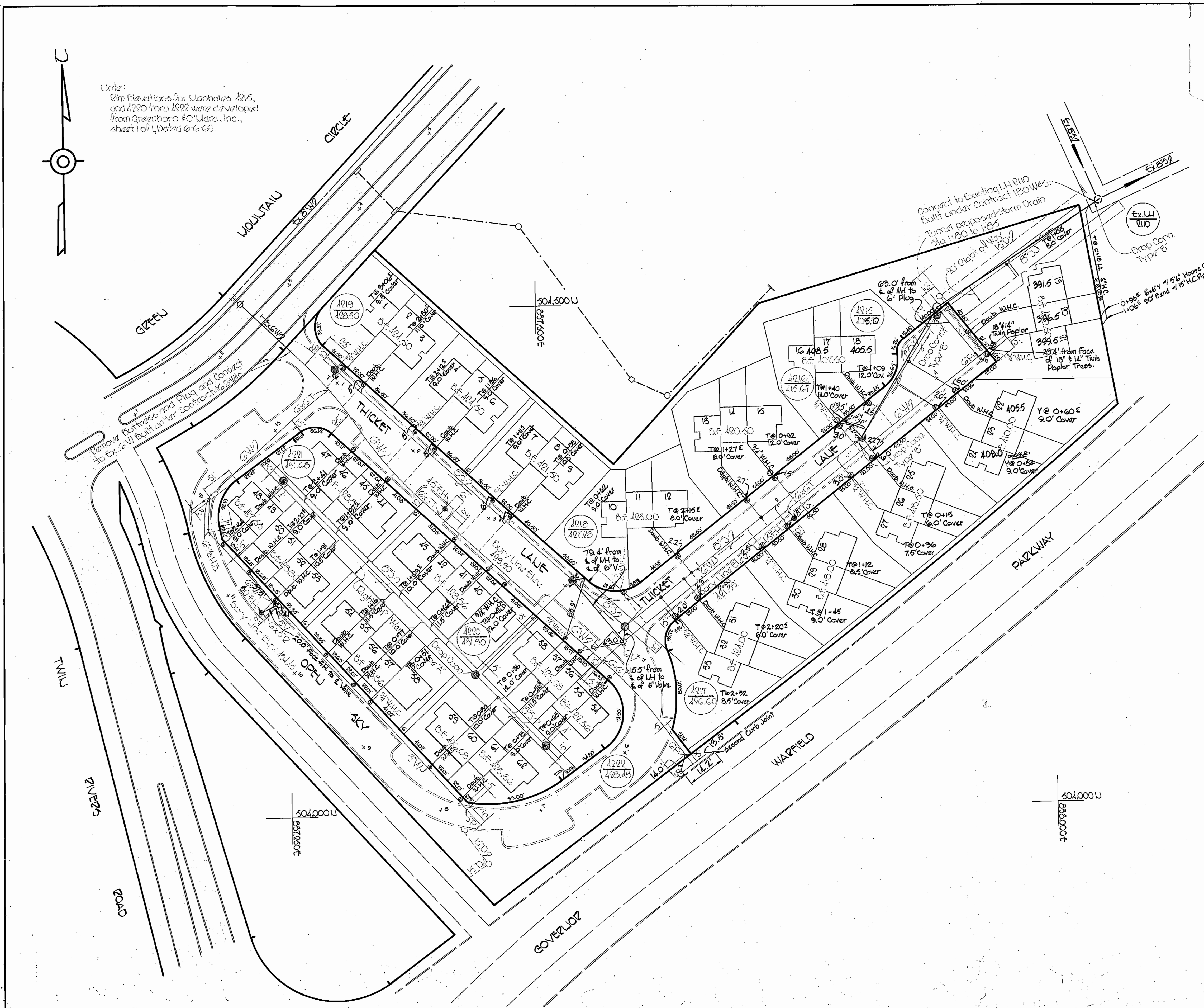
1. Approximate location of existing mains are shown. The Contractor shall take all necessary precautions to protect existing mains and services and maintain uninterrupted supply. Any damage incurred shall be repaired immediately.
2. All pipe elevations shown are invert elevations.
3. The Contractor shall locate existing utilities a minimum of two weeks in advance of construction operations in vicinity of utilities.
4. For all standard details see standards bound in Specifications.
5. All water mains to be C.I.P. or D.I.P. and have a minimum of 3 1/2' cover.
6. Block all fittings with concrete, see standards bound in Specifications.
7. Bury Line elevations on fire hydrants shall be set to elevations shown on drawings or as directed by the Engineer in the field.
8. All fire hydrants shall be strapped and buttressed in accordance with Standard Details.
9. Cost of strapping fire hydrants and valves to trees to be included in unit price bid for furnishing and laying of water mains.
10. Clear all utilities by a minimum of 6'. Clear all poles by a minimum of 2' or tunnel as required.
11. The Contractor shall provide a joint in all sewer mains within 2' of exterior manhole walls.
12. All manholes shall be 40" inside diameter.
13. Profiles stations shall be adjusted to conform with plan dimensions.
14. All horizontal and vertical controls are based on Maryland State Datum.
15. All W.H.C. to be 18" diameter unless otherwise noted.

QUANTITIES	
8" Sewer	1,320'
6" Water	1,350'
8" Water	280'
f.H.	3



*Kenneth M. Melod*  
 Hollow Oaks  
 Contract U3 C-332 W4S

STAKEOUT & DIAG. IN FEB. 1968



WHITMAN, REQUARDT & ASSOCIATES  
 ENGINEERS  
 1304 ST. PAUL ST.  
 BALTIMORE, MARYLAND

DEPARTMENT OF PUBLIC WORKS  
 HOWARD COUNTY, MARYLAND  
 11/5/67  
*W.O. Falbert*  
 CHIEF - BUREAU OF WATER AND SEWER

CONTRACT NO. C-332 W4S

PLAN OF  
 WATER & SEWER MAINS

COLUMBIA  
 VILLAGE OF WILDE LAKE  
 ELECTION DISTRICT - CLARKSVILLE No. 5

DRAWING NO. 1 OF 2  
 SCALE 1"=50'

W.O. 6023-2

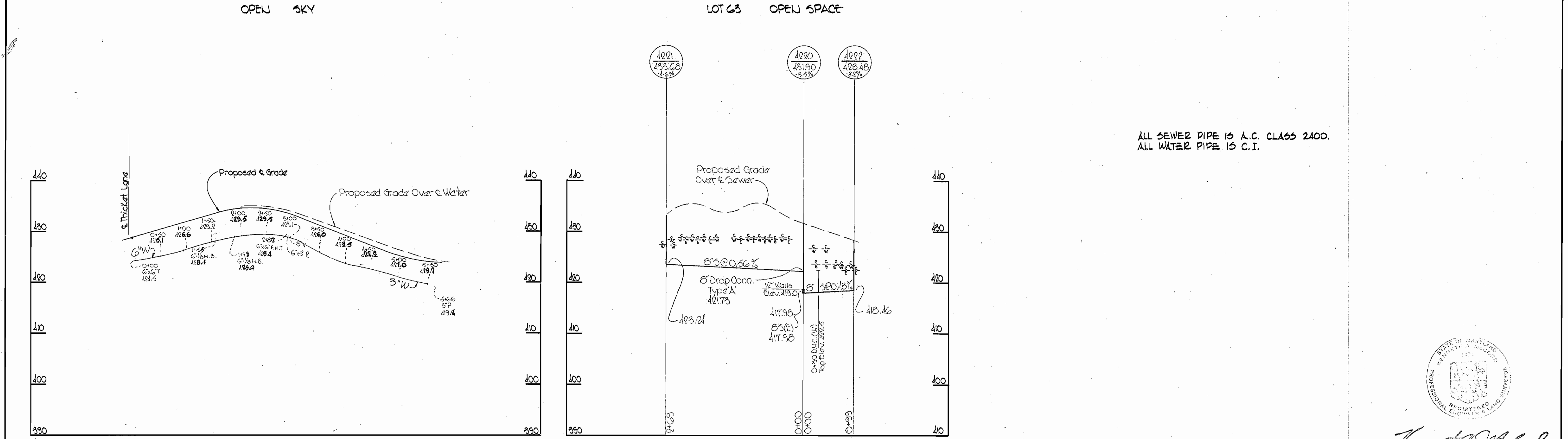
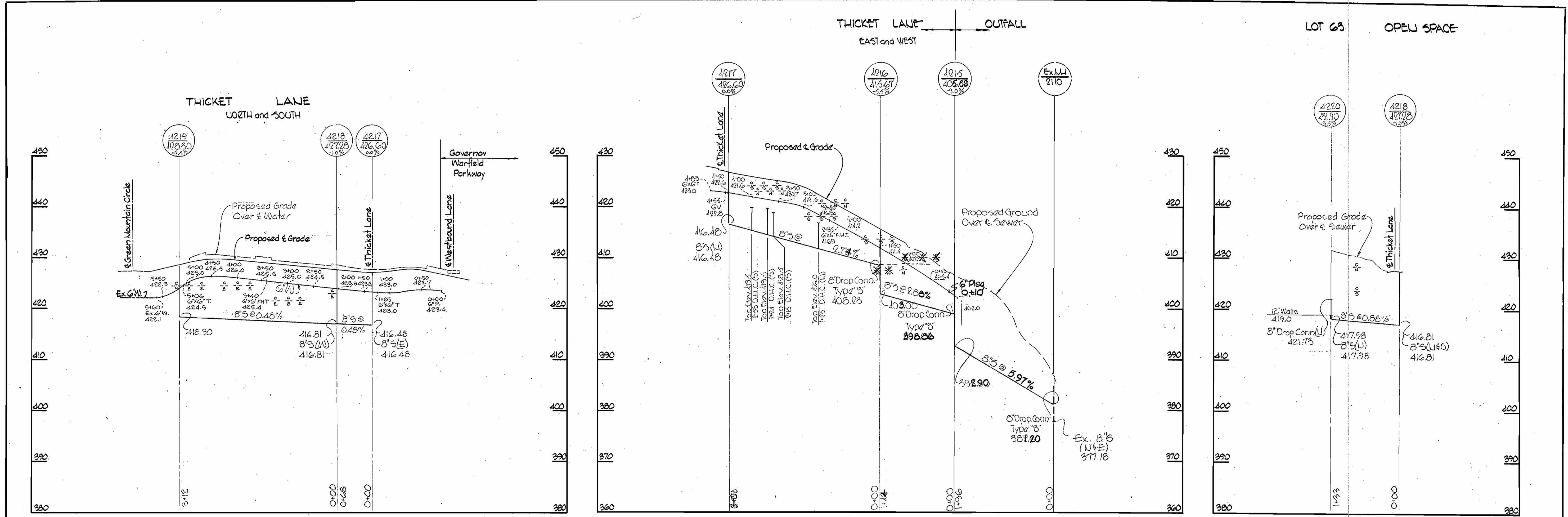
AS BUILT JULY 30, 1970

SUSPENSE

SUSPENSE

SUSPENSE

WS 332-W&S/2



ALL SEWER PIPE IS A.C. CLASS 2400.  
ALL WATER PIPE IS C.I.



*Kenneth A. McLeod*

Hollow Oaks  
Contract U# 332 W&S

WHITMAN, REQUARDT & ASSOCIATES ENGINEERS 1304 ST. PAUL ST. BALTIMORE, MARYLAND	DEPARTMENT OF PUBLIC WORKS HOWARD COUNTY, MARYLAND 11/5/69 <i>W. O. Falber</i> CHIEF-BUREAU OF WATER AND SEWER	CONTRACT NO. C-332 W&S	PROFILES OF WATER & SEWER MAINS	COLUMBIA VILLAGE OF WILDE LAKE ELECTION DISTRICT-CLARKSVILLE NO.5	DRAWING NO. 2 OF 2 SCALE H-1"=100' V-1"=10' AS BUILT
---	--	------------------------	------------------------------------	---	--

W. O. 6023-2

JULY 30, 1970