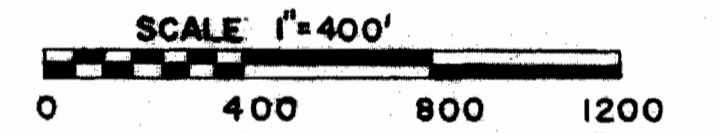
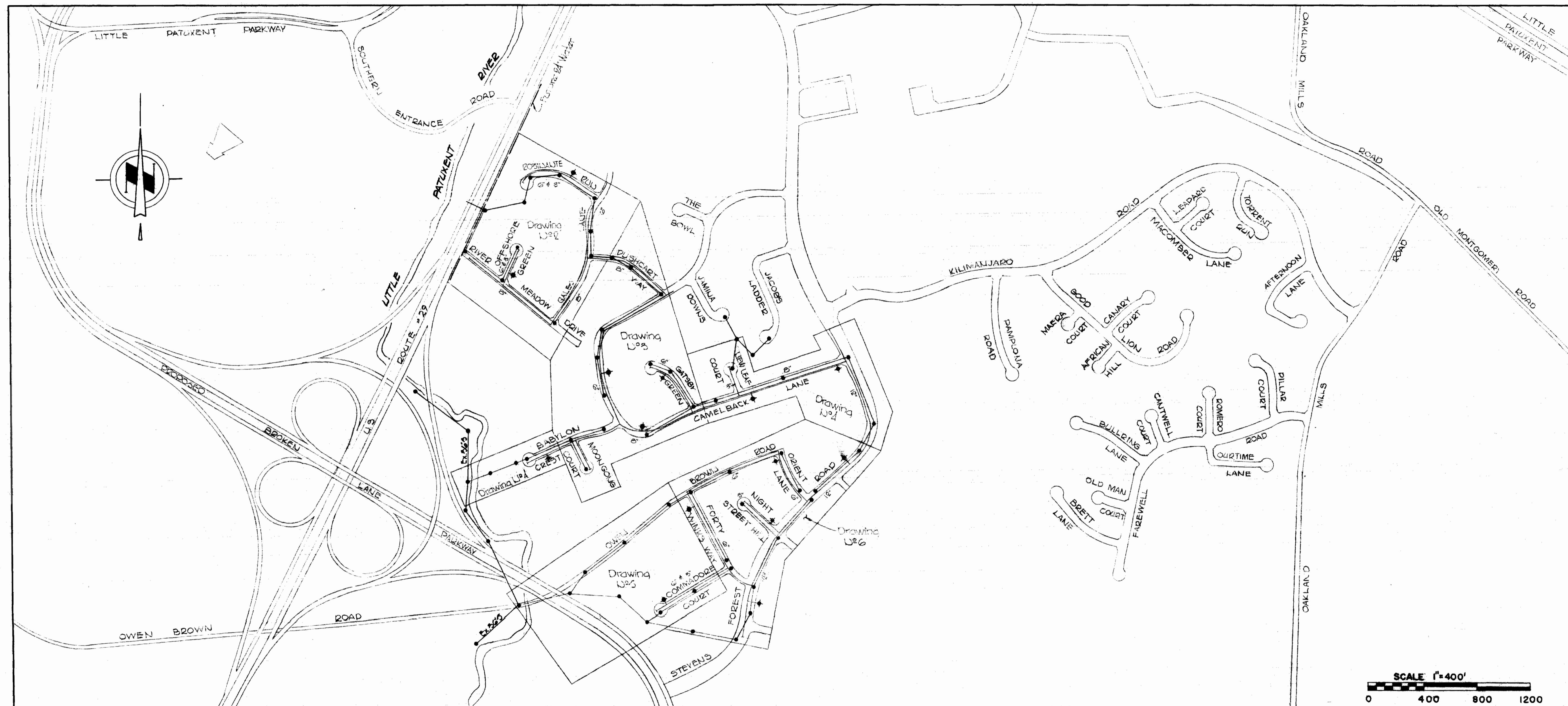
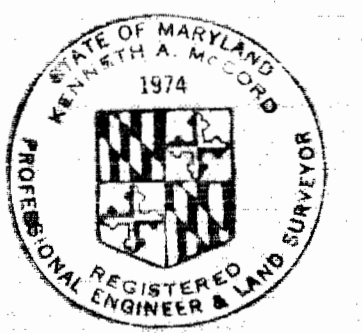


For General Notes
See Drawing W&S



QUANTITIES	
ITEM	QUANTITY
8" Sewer	14,120
8" Water	1,900
6" Water	3,340
8" Water	3,370
12" Water	2,820
Fire Hydrants	15

CONTRACT C-319-W&S
WATER AND SEWER MAIN EXTENSIONS
HOWARD COUNTY, MARYLAND
DEPARTMENT OF PUBLIC WORKS

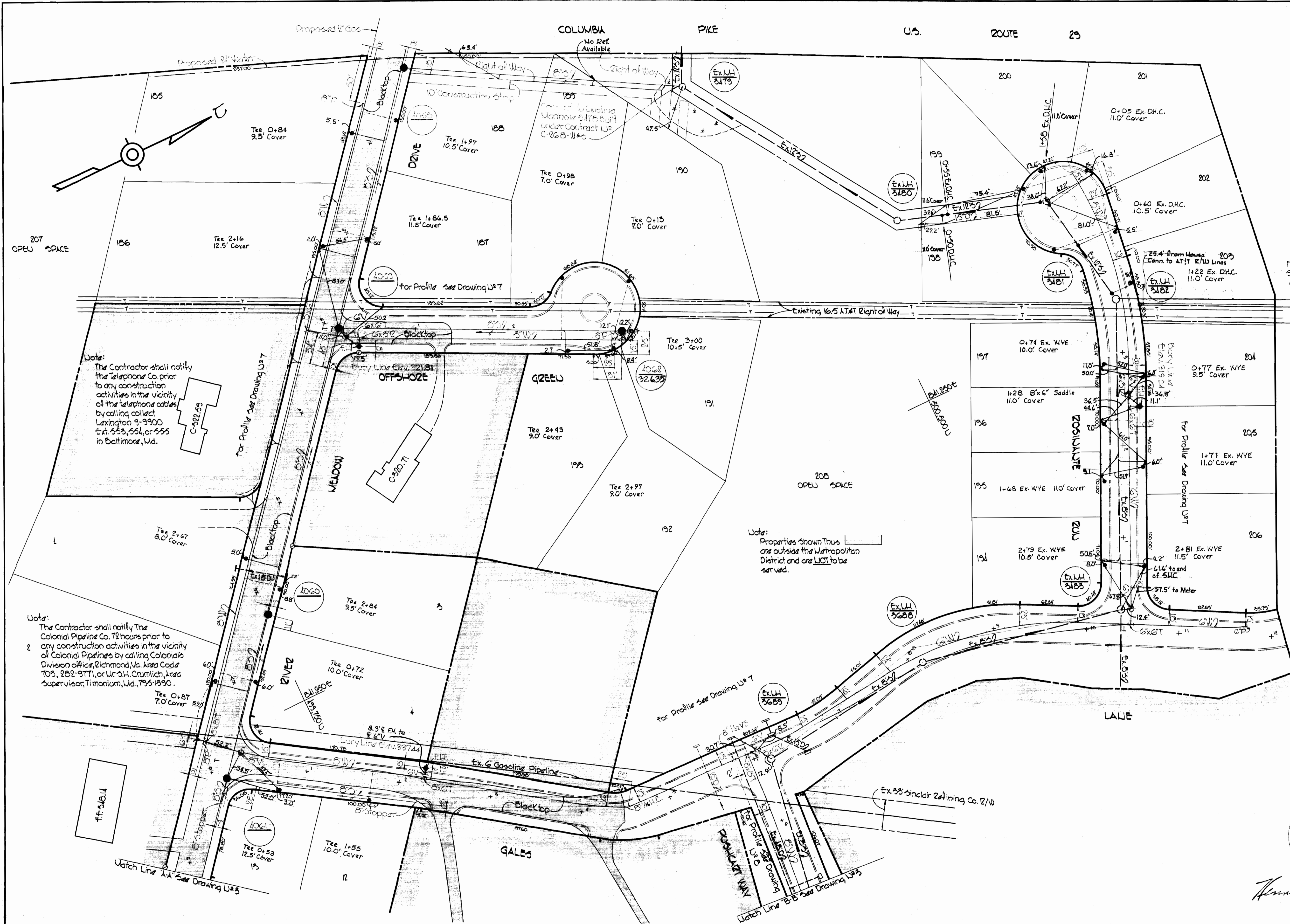


Kenneth A. M. Lind

STAKEOUT in EB. # 4502, #4610
DIARY in EB. #4543, #4610, #4704

WHITMAN, REQUARDT & ASSOCIATES ENGINEERS 1304 ST. PAUL ST. BALTIMORE, MARYLAND	HOWARD COUNTY METROPOLITAN COMMISSION 8-25-69 <i>W. O. Palka</i> CHIEF ENGINEER	CONTRACT NO. C-319-W&S	LOCATION MAP OF WATER & SEWER MAIN EXTENSIONS	COLUMBIA VILLAGE OF OAKLAND MILLS ELECTION DISTRICT GUILFORD NO. 6	DRAWING NO. 1 OF 10	SCALE AS SHOWN
--	---	-----------------------------------	--	---	----------------------------------	-----------------------------

WS 319-W&S/1



Note:
The Contractor shall notify the Telephone Co. prior to any construction activities in the vicinity of the telephone cables by calling collect Lexington 9-9900 ext. 553, 554, or 555 in Baltimore, Md.

Note:
The Contractor shall notify The Colonial Pipeline Co. 72 hours prior to any construction activities in the vicinity of Colonial Pipelines by calling Colonial's Division office, Richmond, Va. Area Code 703, 282-9771, or Mr. S.H. Cromlich, Area Supervisor, Timonium, Md., 795-1390.

Note:
Properties shown thus are outside the Metropolitan District and are NOT to be served.

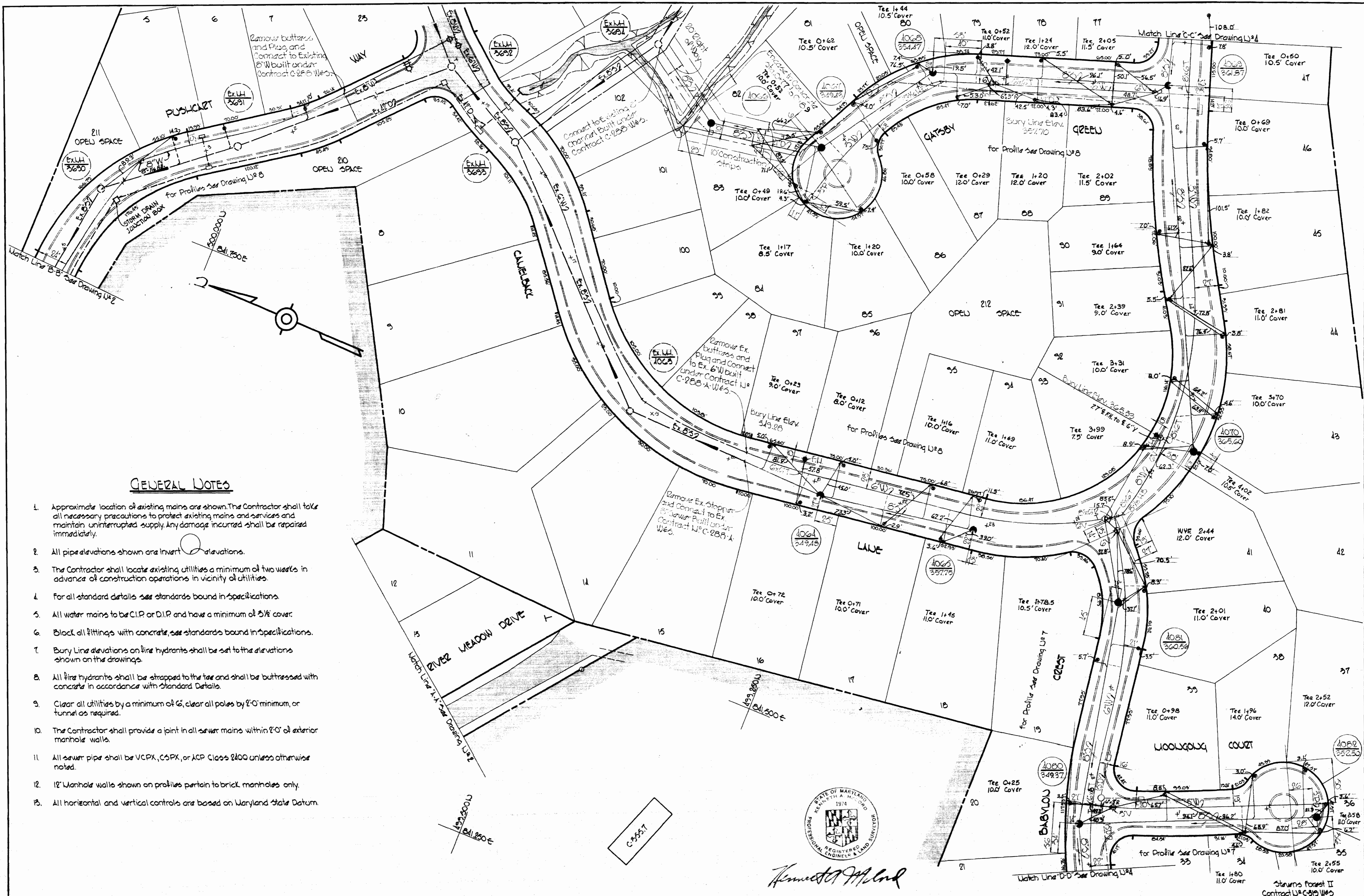


Kenneth A. McLeod

Stipems Form II
Contract U-C-319 W-5

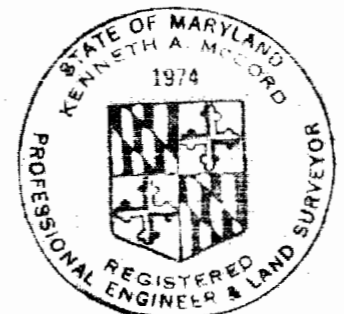
WHITMAN, REQUARDT & ASSOCIATES ENGINEERS 1304 ST. PAUL ST. BALTIMORE, MARYLAND	HOWARD COUNTY METROPOLITAN COMMISSION 8-25-69 <i>W O Palbat</i> DATE CHIEF ENGINEER	CONTRACT NO. C-319-W-5	PLAN OF WATER & SEWER MAINS	COLUMBIA VILLAGE OF OAKLAND MILLS ELECTION DISTRICT GUILFORD NO. 6	DRAWING NO. 2 OF 10 SCALE 1" = 50' 500-401 499-401
---	---	------------------------	--------------------------------	--	---

WS 319-W-5/2



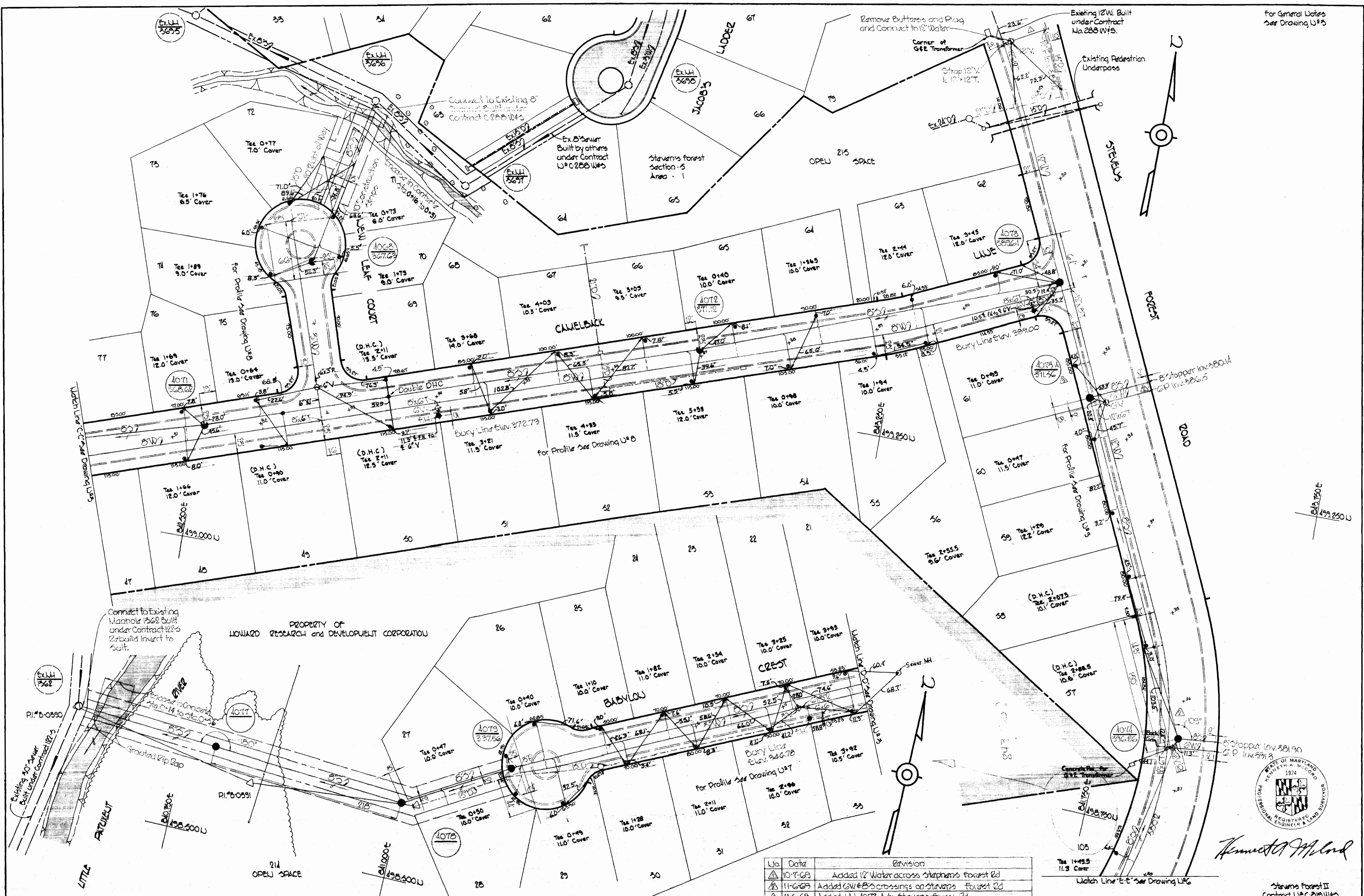
GENERAL NOTES

1. Approximate location of existing mains are shown. The Contractor shall take all necessary precautions to protect existing mains and services and maintain uninterrupted supply. Any damage incurred shall be repaired immediately.
2. All pipe elevations shown are invert elevations.
3. The Contractor shall locate existing utilities a minimum of two weeks in advance of construction operations in vicinity of utilities.
4. For all standard details see standards bound in specifications.
5. All water mains to be C.I.P. or D.I.P. and have a minimum of 3 1/2' cover.
6. Block all fittings with concrete, see standards bound in specifications.
7. Bury Line elevations on fire hydrants shall be set to the elevations shown on the drawings.
8. All fire hydrants shall be strapped to the tee and shall be buttressed with concrete in accordance with Standard Details.
9. Clear all utilities by a minimum of 6', clear all poles by 2'-0" minimum, or tunnel as required.
10. The Contractor shall provide a joint in all sewer mains within 8'-0" of exterior manhole walls.
11. All sewer pipe shall be VCPX, CSPX, or ACP Class 2400 unless otherwise noted.
12. 12" Manhole walls shown on profiles pertain to brick manholes only.
13. All horizontal and vertical controls are based on Maryland State Datum.



WHITMAN, REQUARDT & ASSOCIATES ENGINEERS 1304 ST. PAUL ST. BALTIMORE, MARYLAND	HOWARD COUNTY METROPOLITAN COMMISSION DATE <u>8-25-69</u> <i>W O Fallick</i> CHIEF ENGINEER	CONTRACT NO. C-319-W&S	PLAN OF WATER & SEWER MAINS	COLUMBIA VILLAGE OF OAKLAND MILLS ELECTION DISTRICT GUILFORD NO. 6	DRAWING NO. 3 OF 10	SCALE H-1"=100' V-1"=10'
--	---	-----------------------------------	--	---	--	---

For General Notes
See Drawing U#3



Kenneth M. Lind

No.	Date	Revision
10-T-69		Added 12" Water across Stevens Forest Rd
11-G-69		Added GW#B's crossings on Stevens Forest Rd
11-G-69		Added M# 4073-A to Stevens Forest Rd

WHITMAN, REQUARDT & ASSOCIATES
ENGINEERS
1304 ST. PAUL ST.
BALTIMORE, MARYLAND

HOWARD COUNTY METROPOLITAN COMMISSION
8-25-69 *W O Falbert*
DATE CHIEF ENGINEER

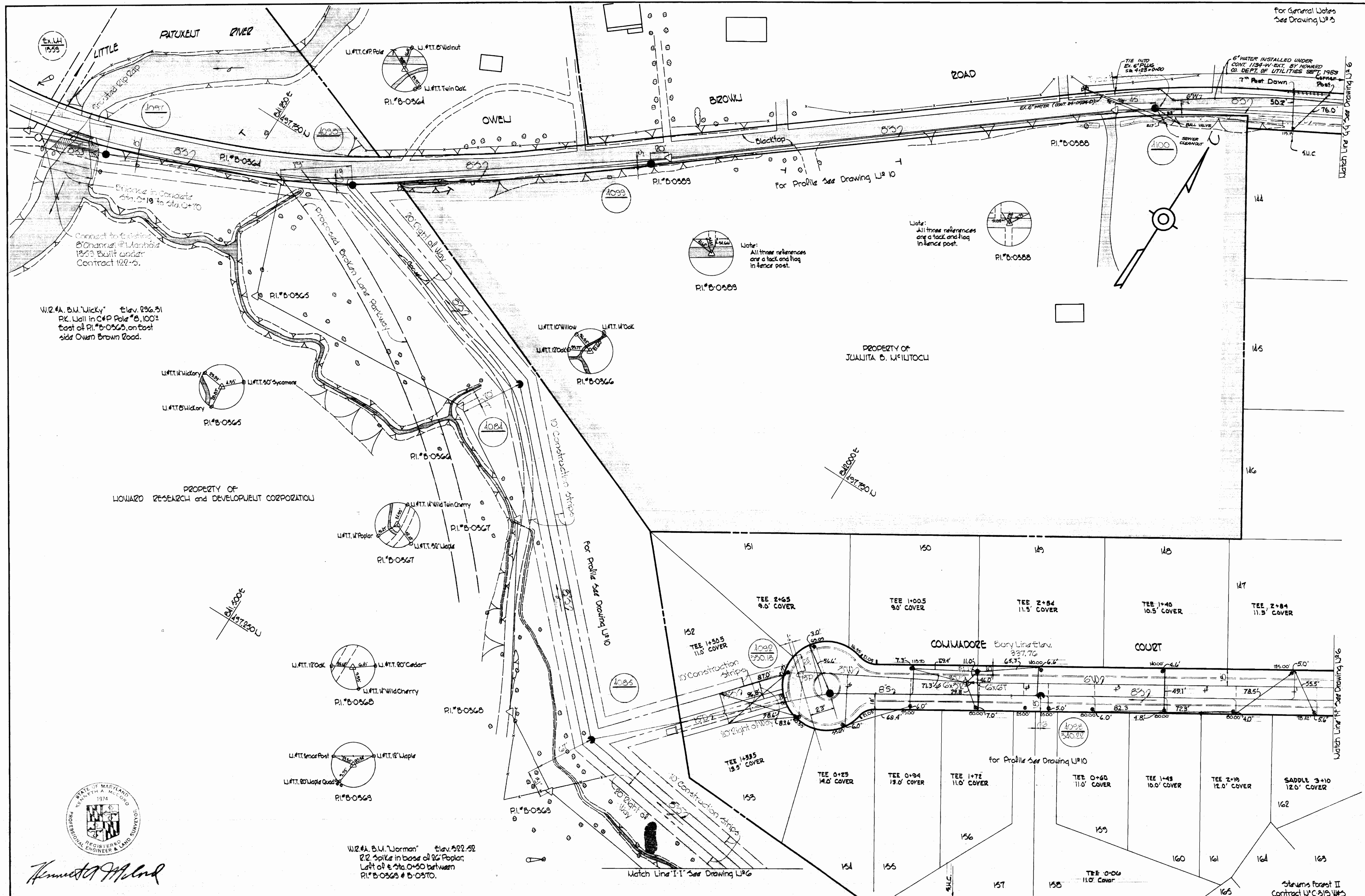
CONTRACT NO. C-319-WBS

PLAN OF WATER & SEWER MAINS

COLUMBIA VILLAGE OF OAKLAND MILLS ELECTION DISTRICT GUILFORD NO. 6

DRAWING NO. 4 OF 10
SCALE 1" = 50'

For General Notes See Drawing U# 3

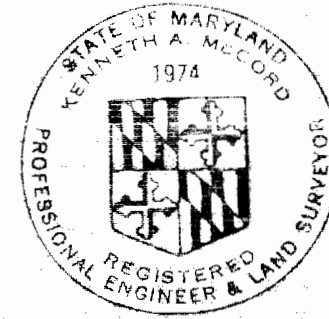


W.2. #A. B.M. "Wicky" Elev. 296.51
 P.C. Wall in C&P Pole #8, 100'
 East of P.I. #B-0565, on east
 side Owen Brown Road.

PROPERTY OF
 HOWARD RESEARCH AND DEVELOPMENT CORPORATION

PROPERTY OF
 JUALITA B. WILUOCHI

W.2. #A. B.M. "Norman" Elev. 522.52
 2" Spike in base of 9" Poplar,
 W.11' of Sta. 0+50 between
 P.I. #B-0565 & B-0570.



Whitman, Requardt & Associates

WHITMAN, REQUARDT & ASSOCIATES
 ENGINEERS
 1304 ST. PAUL ST.
 BALTIMORE, MARYLAND

HOWARD COUNTY METROPOLITAN COMMISSION
 8-25-69 DATE
W O Palbert CHIEF ENGINEER

CONTRACT NO. C-319-W&S

PLAN OF
 WATER & SEWER MAINS

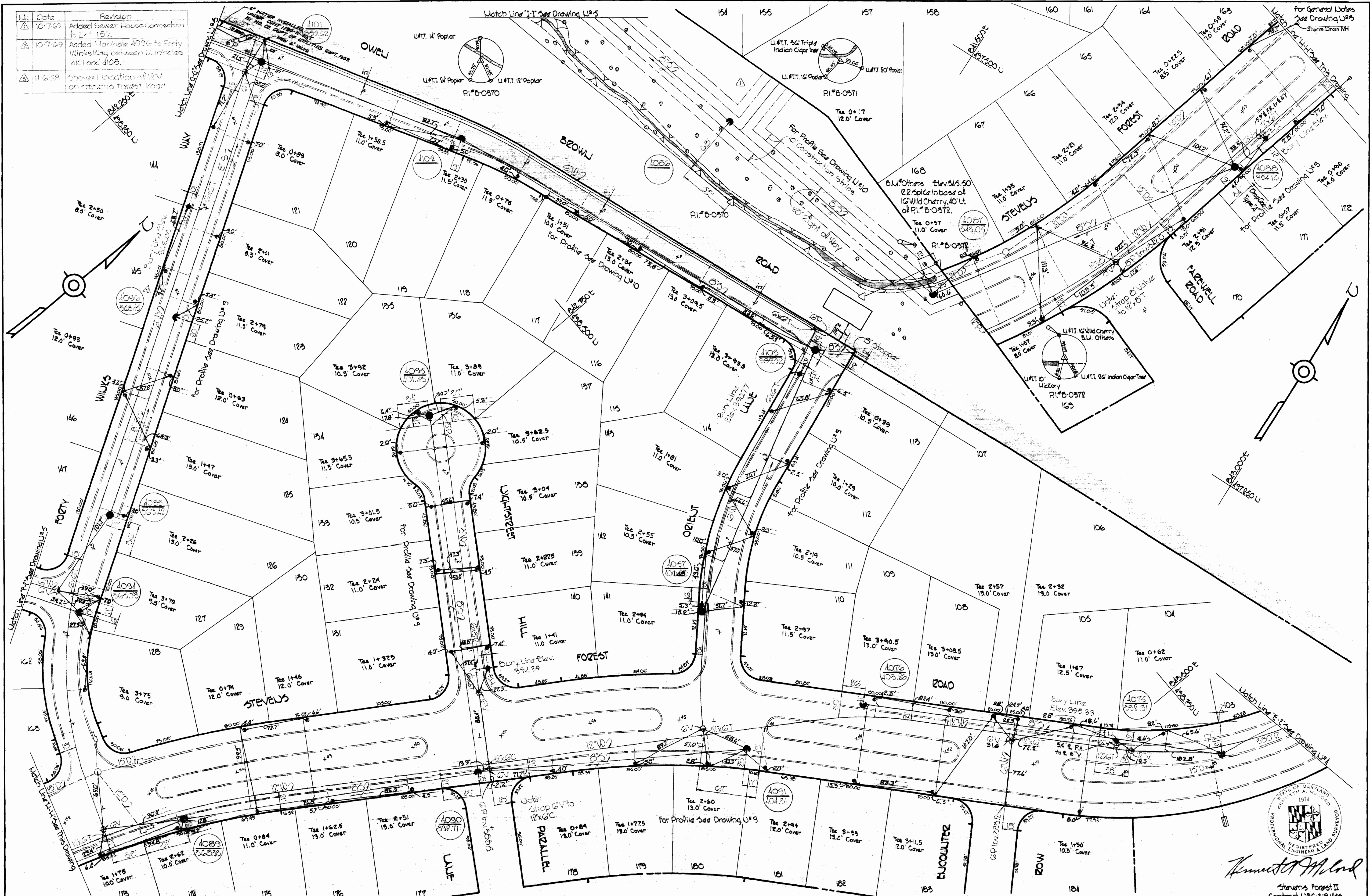
COLUMBIA
 VILLAGE OF OAKLAND MILLS
 ELECTION DISTRICT GUILFORD NO. 6

DRAWING
 NO. 5
 OF 10

SCALE
 1" = 50'

S 319-W&S/5

Date	Revision
10-7-69	Added Sewer House Connection to Lot 157.
10-7-69	Added Manhole 4096 to Forty Winkling between Manholes 4101 and 4105.
11-6-69	showed location of 12V on above forest road.



WHITMAN, REQUARDT & ASSOCIATES
ENGINEERS
1304 ST. PAUL ST.
BALTIMORE, MARYLAND

HOWARD COUNTY METROPOLITAN COMMISSION
8-25-69
DATE
W O P. *W O P.*
CHIEF ENGINEER

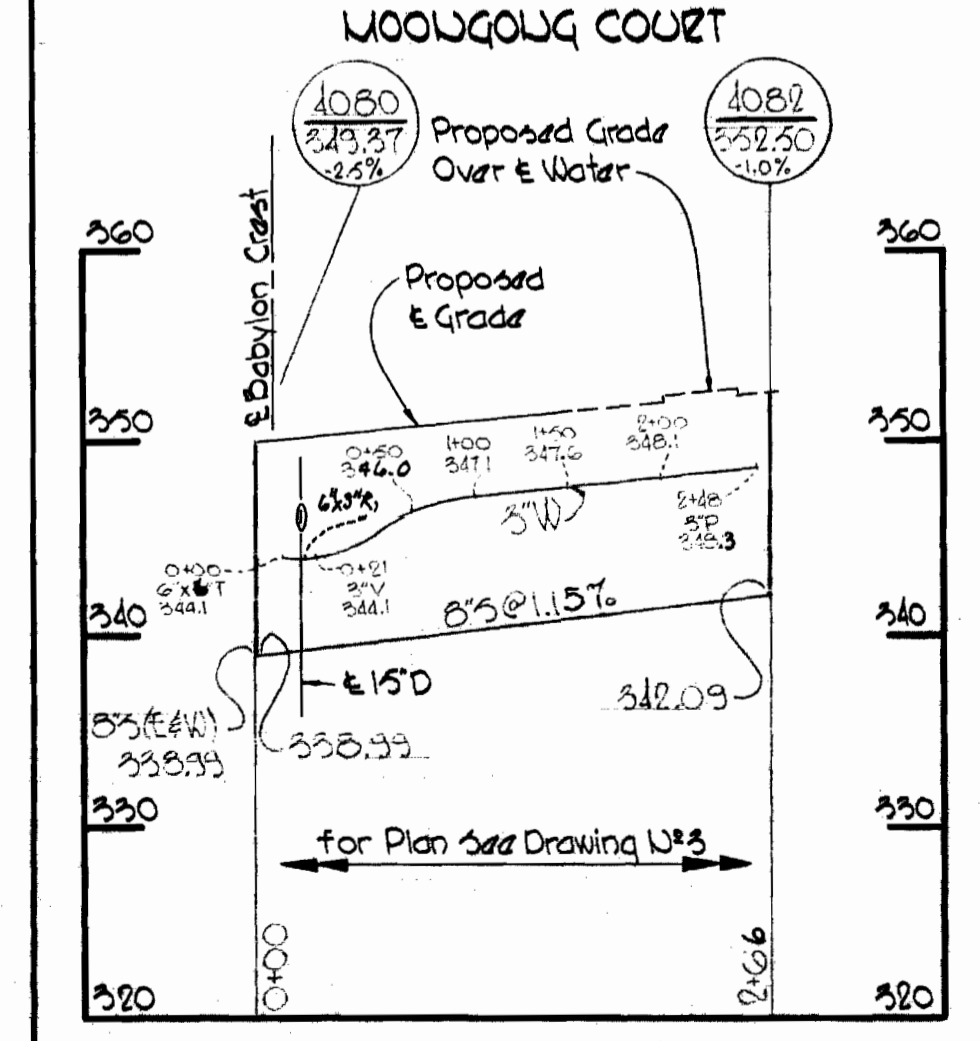
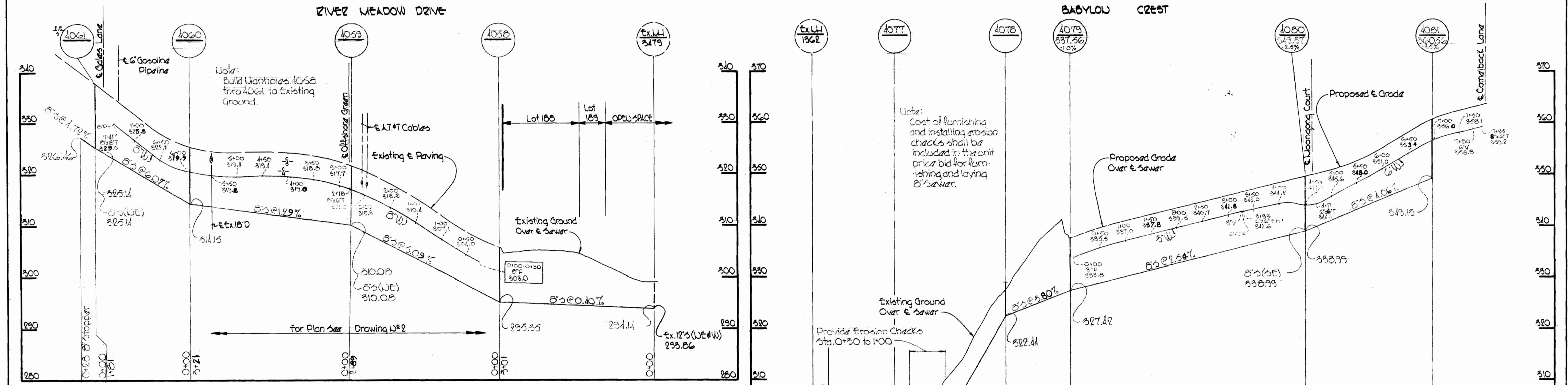
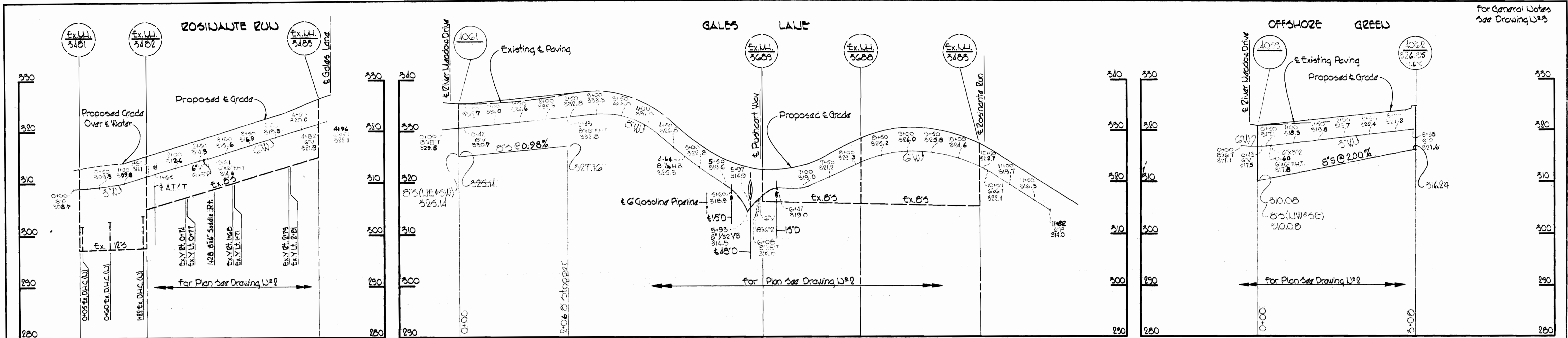
CONTRACT NO. C-319-W85

PLAN OF
WATER & SEWER MAINS

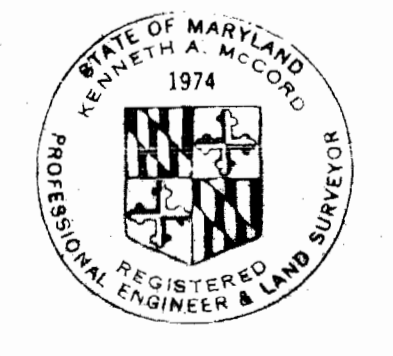
COLUMBIA
VILLAGE OF OAKLAND MILLS
ELECTION DISTRICT GUILFORD NO. 6

DRAWING NO. 6 OF 10
SCALE 1" = 50'
498-483
498-482
497-482

WS 319-W85/6



All Sewer Pipe - LCP Class 2400
All Water Pipe - Cast Iron

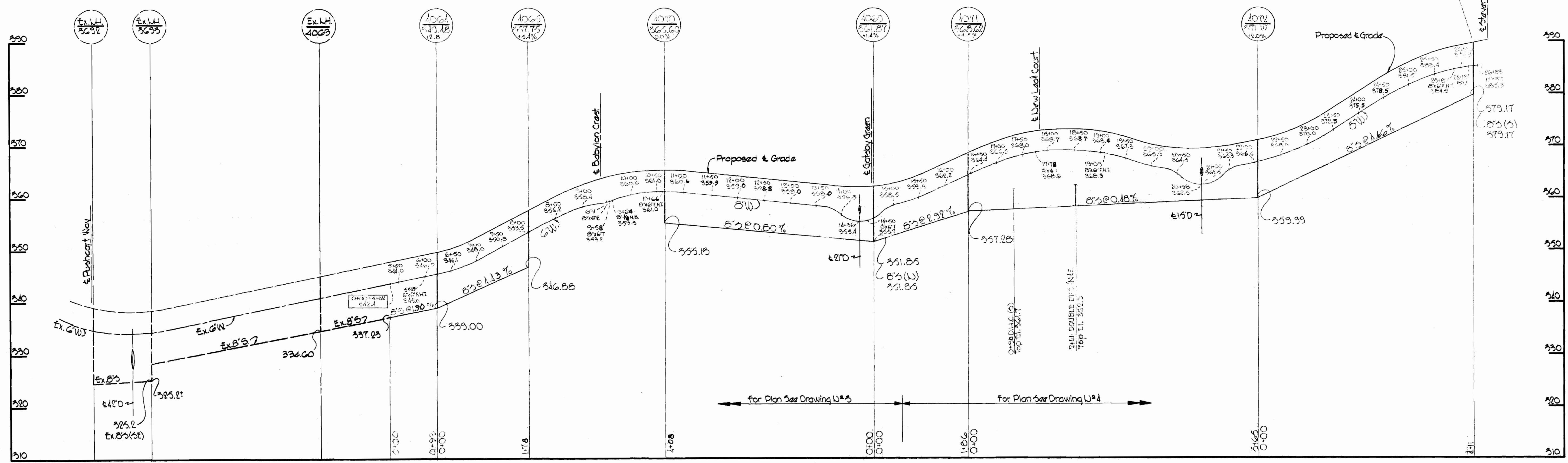


Kenneth A. McLeod

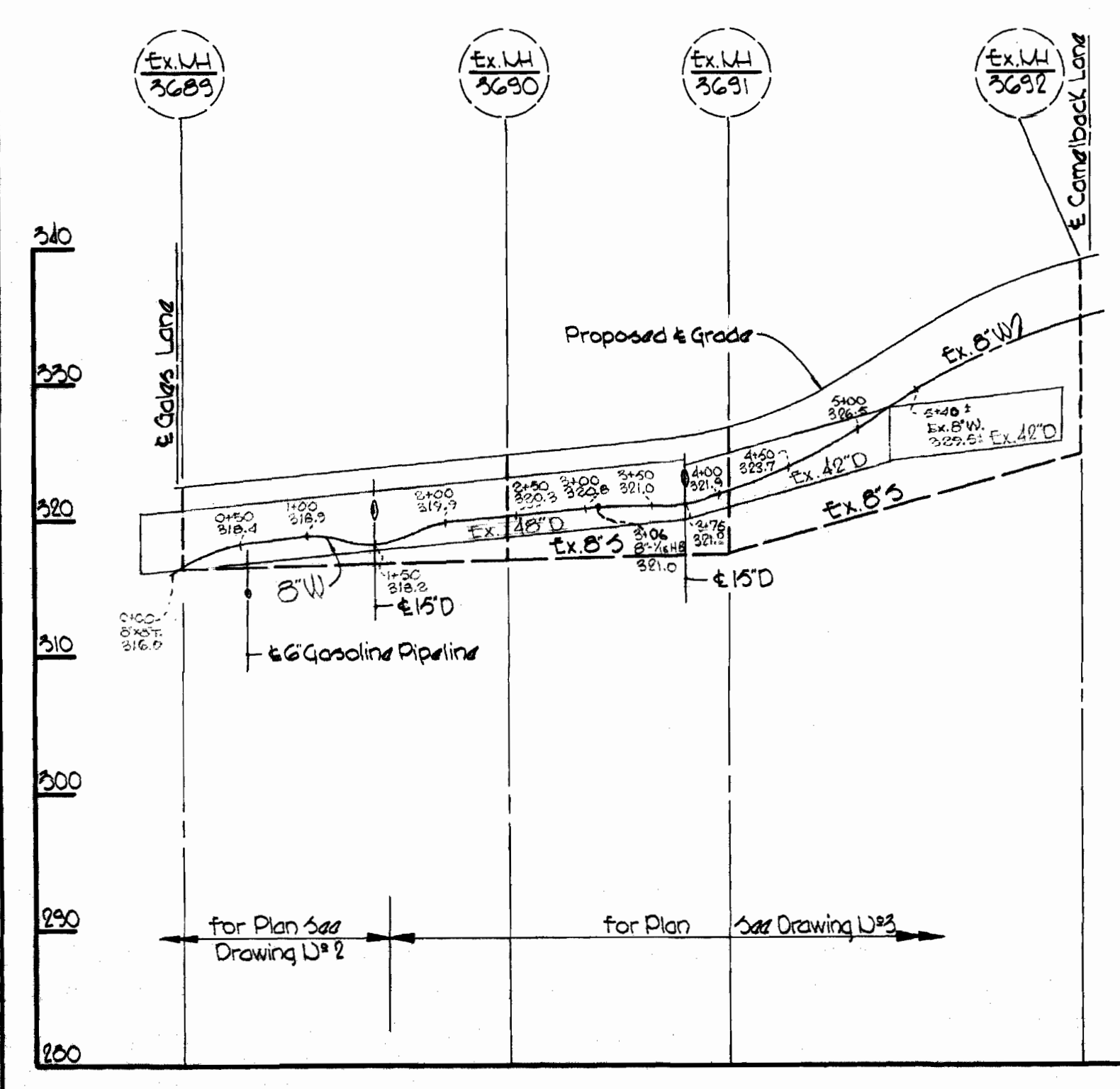
WS 319-W&S/7

WHITMAN, REQUARDT & ASSOCIATES ENGINEERS 1304 ST. PAUL ST. BALTIMORE, MARYLAND	HOWARD COUNTY METROPOLITAN COMMISSION 8-25-69 <i>Edward Falbert</i> CHIEF ENGINEER	CONTRACT NO. C-319-W&S	PROFILES OF WATER & SEWER MAINS	COLUMBIA VILLAGE OF OAKLAND MILLS ELECTION DISTRICT GUILFORD NO. 6	DRAWING NO. 7 OF 10 SCALE H-1"=100' V-1"=10' AS BUILT
---	---	------------------------	------------------------------------	--	---

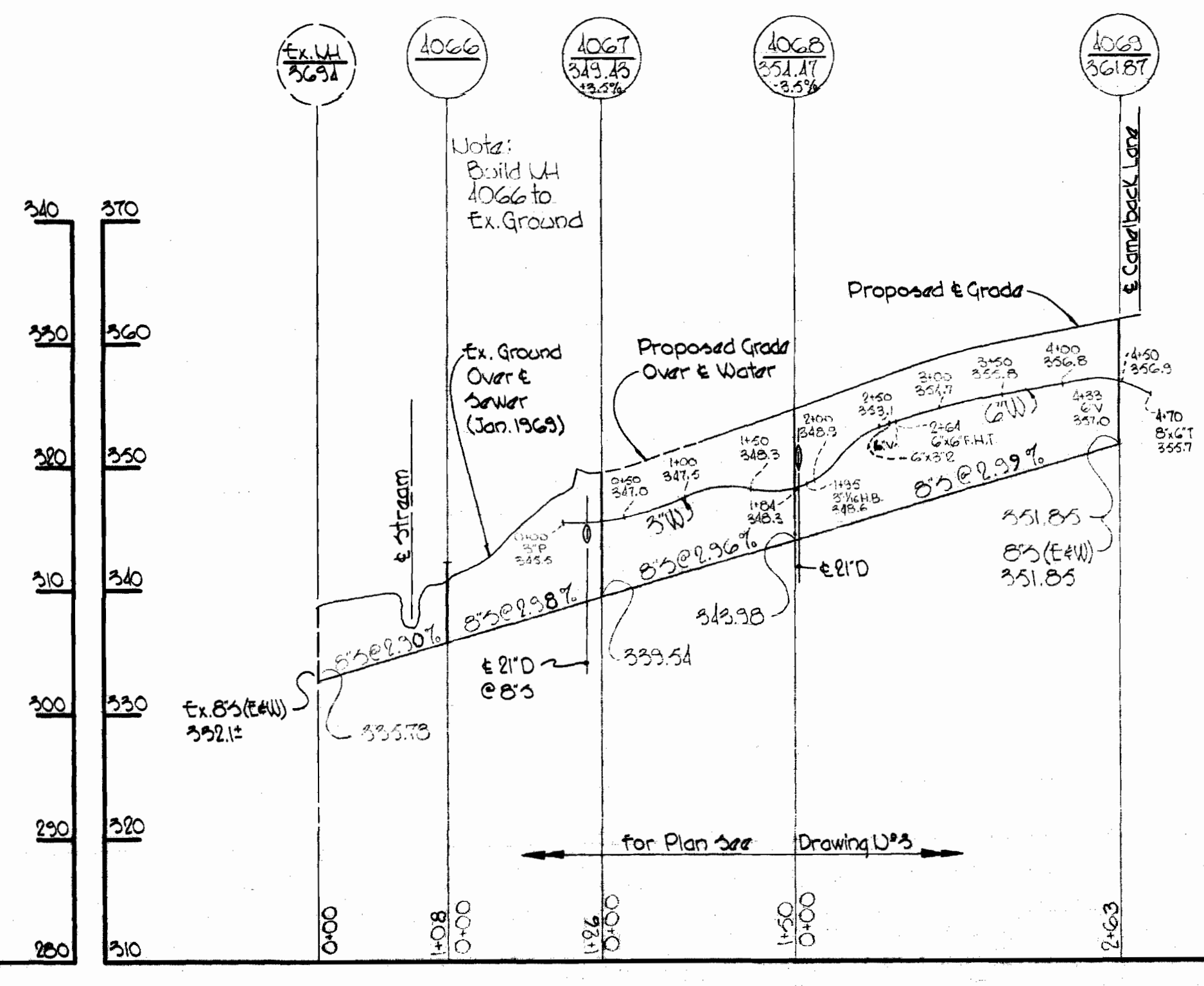
CAMELBACK LAKE



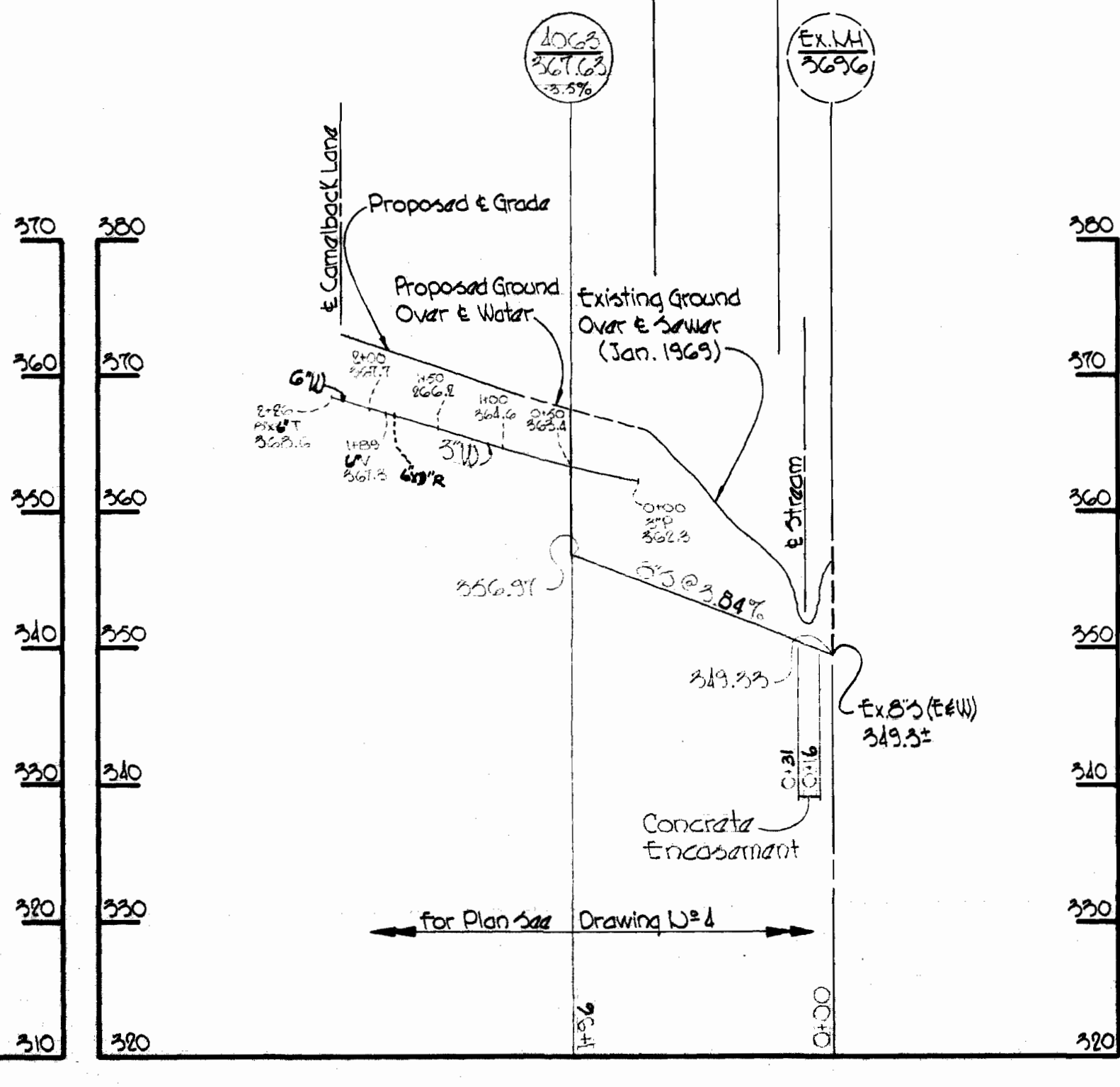
PUSHCART WAY



GATSBY GREEN



NEW LEAF COURT



All Sewer Pipe - A.C.P. Class 2400
All Water Pipe - Cast Iron



Kenneth A. McLeod

Stevens Forest II
Contract U# C-319 W&S

WHITMAN, REQUARDT & ASSOCIATES
ENGINEERS
1304 ST. PAUL ST.
BALTIMORE, MARYLAND

HOWARD COUNTY METROPOLITAN COMMISSION
8-25-69 *W. O. Fallick*
DATE CHIEF ENGINEER

CONTRACT NO. C-319-W&S

PROFILES OF
WATER & SEWER MAINS

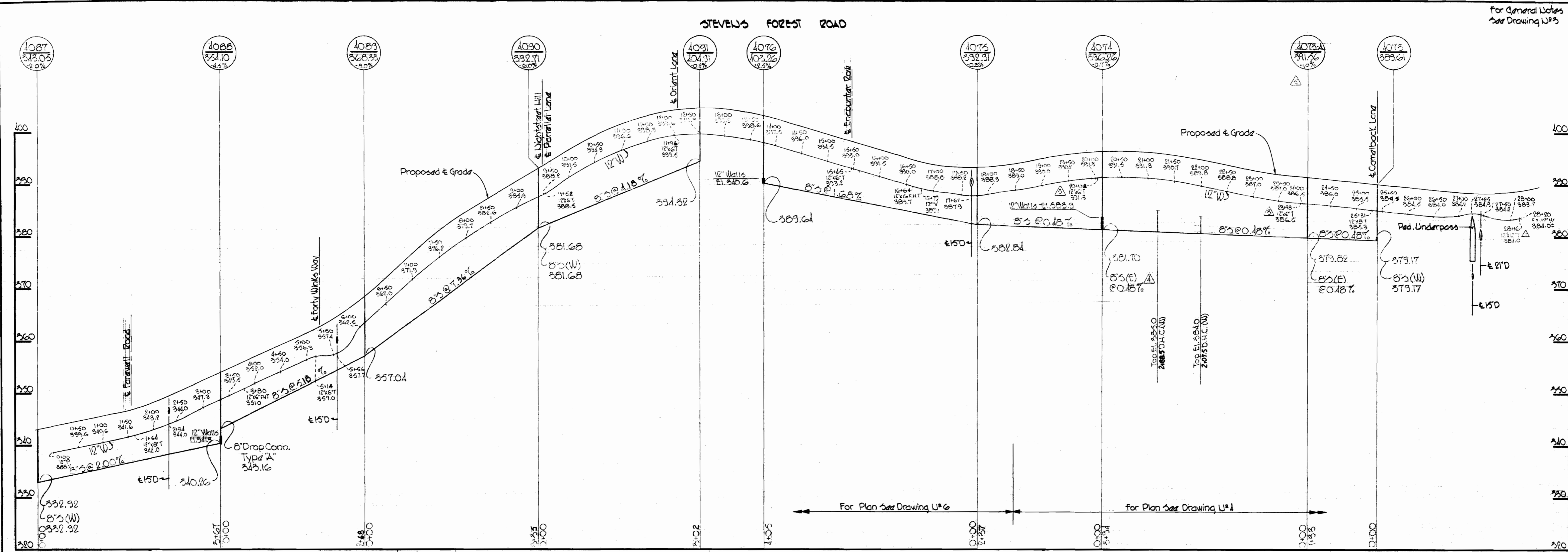
COLUMBIA
VILLAGE OF OAKLAND MILLS
ELECTION DISTRICT GUILFORD, NO. 6

DRAWING
NO. 8
OF 10

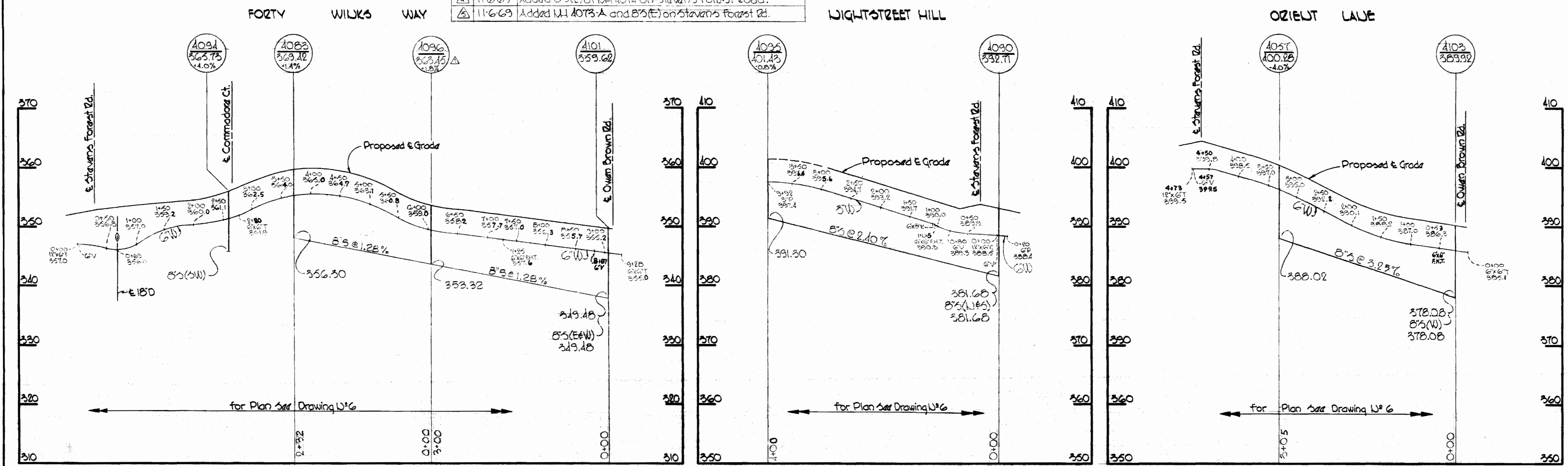
SCALE
H-1"=100'
V-1"=10'

AS BUILT October 15, 1970

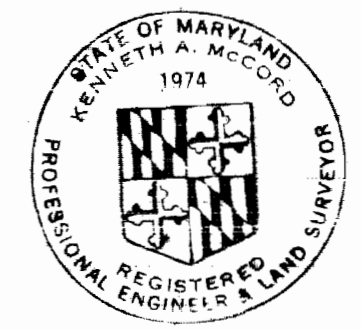
WS 319-W&S/8



U#	Date	Revision
△	10-7-69	Added Manhole 4096 to Forty Winks Way.
△	10-7-69	Added 12" x 12" at Sta. 381.16 on Stevens Forest Road.
△	11-6-69	Added 12" x 12" at Sta. 385.93 & 393.91 on Stevens Forest Road.
△	11-6-69	Added 8" (E) at U# 4074 on Stevens Forest Road.
△	11-6-69	Added U# 4073-A and 8" (E) on Stevens Forest Rd.



All Sewer Pipe - A.C.P. Class 2400
All Water Pipe - Cast Iron



Kenneth A. McCord

Stevens Forest II
Contract W.C. 319-W#3

WHITMAN, REQUARDT & ASSOCIATES
ENGINEERS
1304 ST. PAUL ST.
BALTIMORE, MARYLAND

HOWARD COUNTY METROPOLITAN COMMISSION
8-25-69 *W.O. Ellert*
DATE CHIEF ENGINEER

CONTRACT NO. C-319-W#3

PROFILES OF
WATER & SEWER MAINS

COLUMBIA
VILLAGE OF OAKLAND MILLS
ELECTION DISTRICT GUILFORD NO. 6

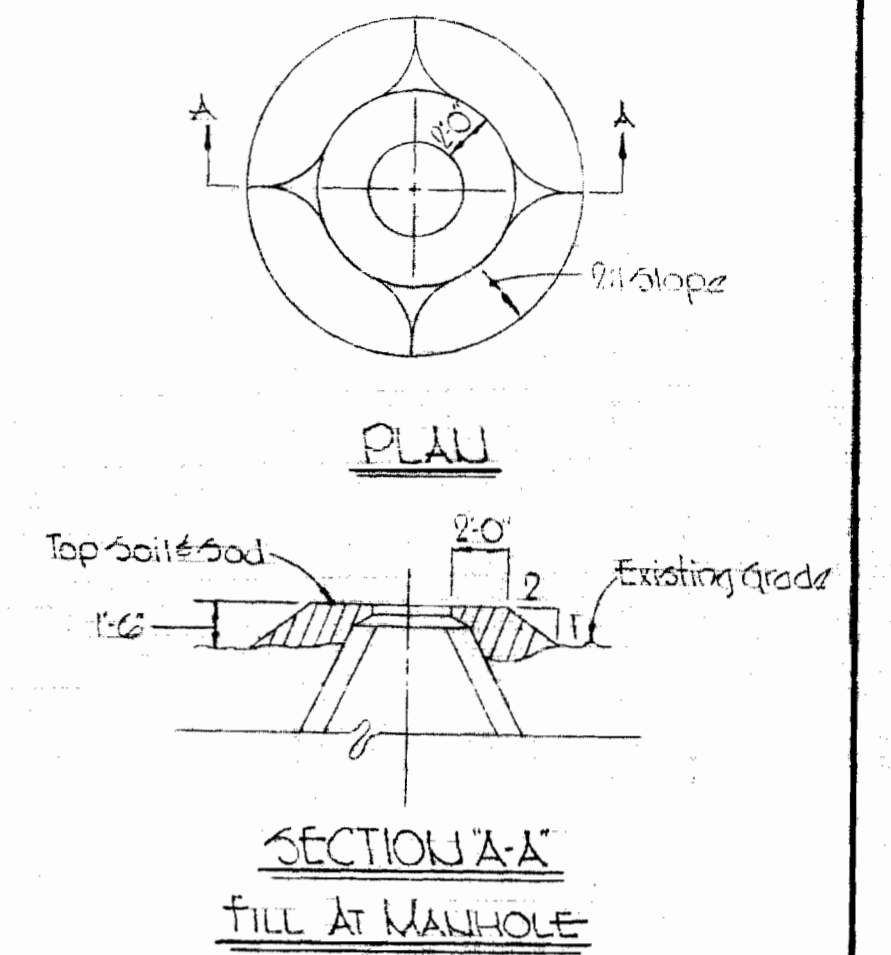
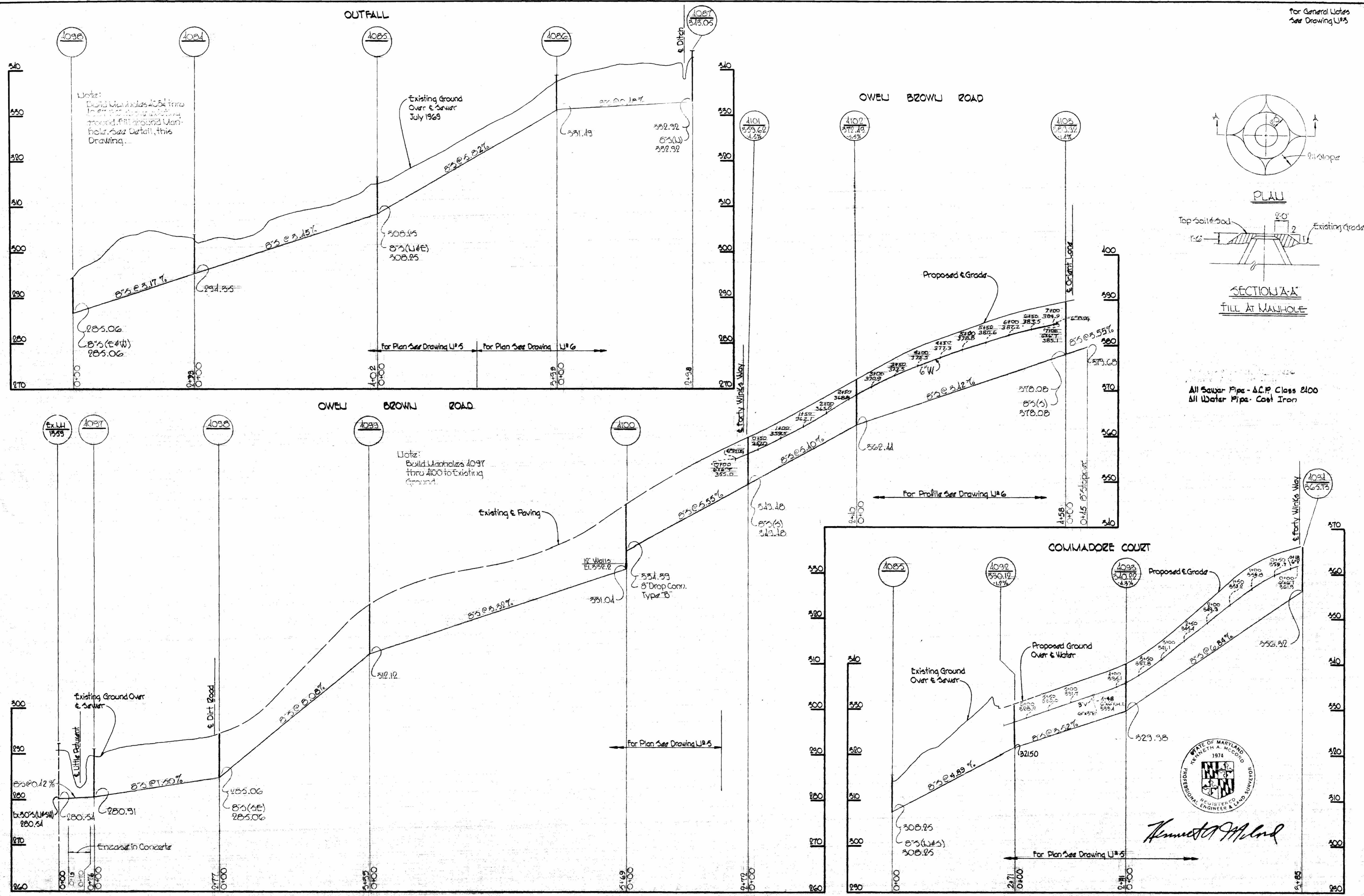
DRAWING
NO. 9
OF 10

SCALE
H-1"=100'
V-1"=10'

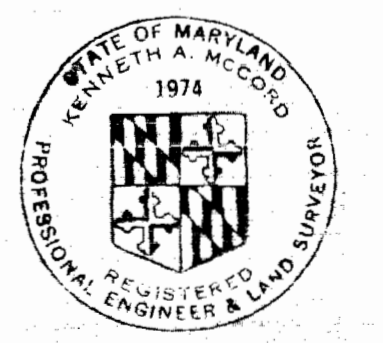
AS BUILT October 15, 1970

WS 319-W#3/9

For General Notes
See Drawing U#5



All Sewer Pipe - A.C.P. Class 2400
All Water Pipe - Cast Iron



Kenneth A. McLeod

WHITMAN, REQUARDT & ASSOCIATES ENGINEERS 1304 ST. PAUL ST. BALTIMORE, MARYLAND	HOWARD COUNTY METROPOLITAN COMMISSION DATE: 8-25-69 <i>W. O. Falbert</i> CHIEF ENGINEER	CONTRACT NO. C-319-W&S	PROFILES OF WATER & SEWER MAINS	COLUMBIA VILLAGE OF OAKLAND MILLS ELECTION DISTRICT GUILFORD NO. 6	DRAWING NO. 10 OF 10 SCALE: H-1"=100' V-1"=10' AS BUILT October 15, 1970
--	---	------------------------	------------------------------------	--	--

W. O. 6025-2