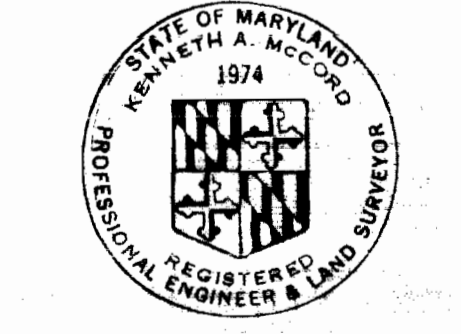


VICINITY MAP
Scale: 1 1/4 mile
GENERAL NOTES

1. Approximate location of existing mains are shown. The Contractor shall take all necessary precautions to protect existing mains and services and maintain uninterrupted supply. Any damage incurred shall be repaired immediately.
2. All pipe elevations shown are invert elevations.
3. The Contractor shall locate existing utilities a minimum of two weeks in advance of construction operations in vicinity of utilities.
4. For all standard details see standards bound in Specifications.
5. All water mains shall be C.I.P. or D.I.P. and have a minimum of 3 1/2' cover.
6. Block all fittings with concrete, see standard details bound in Specifications.
7. Clear all utilities by a minimum of 6'; clear all poles by 2'-0" minimum or tunnel as required.
8. The Contractor shall provide a joint in all sewer mains within 2'-0" of exterior manhole walls.
9. All manholes shall be 4'-0" inside diameter.
10. Bury line elevations on fire hydrants shall be set to elevations shown on drawings.
11. All Fire Hydrants shall be strapped to tee and buttressed with concrete in accordance with Standard Details.
12. Cost of strapping fire hydrants and valves to tees to be included in the unit price bid for furnishing and installing fire hydrants.
13. All Horizontal and Vertical Controls are base on Maryland State Datum.
14. Profile stations shall be adjusted as required to conform to plan dimensions.

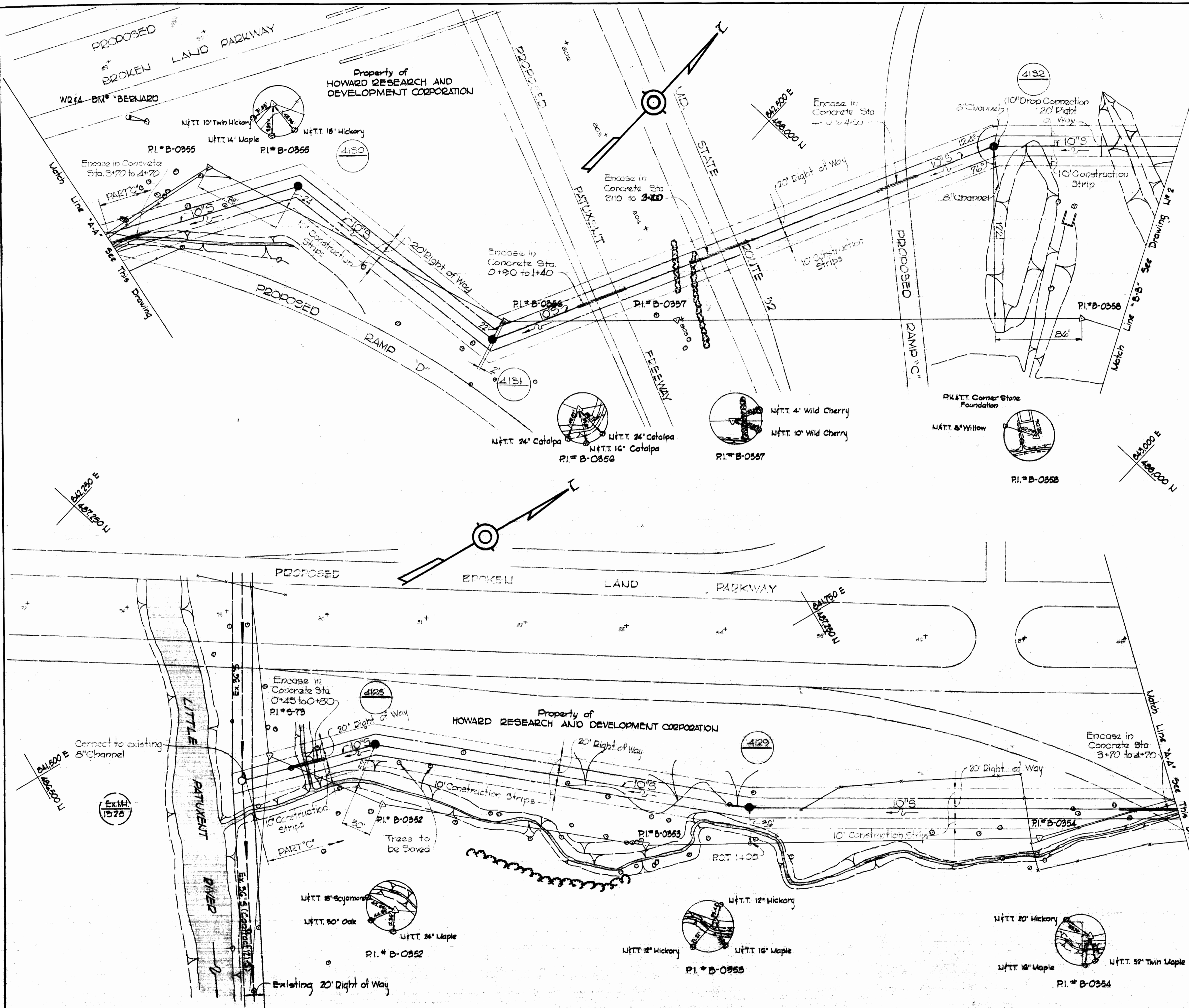
QUANTITIES	
24" Water Main	2130 LF
16" Water Main	200 LF
12" Water Main	10 LF
8" Water Main	1400 LF
6" Water Main	320 LF
10" Sewer Main	4360 LF
8" Sewer Main	2080 LF
Fire Hydrants	1

STAKEOUT & DIARY IN F.B. 4566
SEWER 6"-8"-10" A.C.P.
8" WATER C.I.P. CLASS 22
6" WATER C.I.P. CLASS 22
16" WATER D.I.P. CLASS 2
24" WATER D.I.P. CLASS 2



Kenneth A. McLeod

E.G.U. Section 2 Area 2
Contract U* (C-316-W*8)

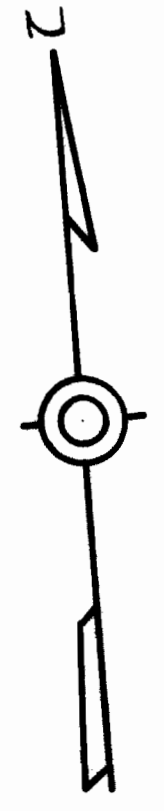


WHITMAN, REQUARDT & ASSOCIATES ENGINEERS 1304 ST. PAUL ST. BALTIMORE, MARYLAND	HOWARD COUNTY METROPOLITAN COMMISSION DATE: 10-9-69 W. O. Faller CHIEF ENGINEER	CONTRACT NO. C-316-W*8	PLAN OF WATER AND SEWER MAINS	COLUMBIA E.G.U. WATER AND SEWER EXTENSIONS ELECTION DISTRICT GUILFORD No. 6	DRAWING NO. 1 OF 6 AS SHOWN	SCALE AS SHOWN
--	---	-------------------------------	--------------------------------------	---	------------------------------------	--------------------------

W. O. 6023-2

JULY 2, 1970

WS 315-W*8/1

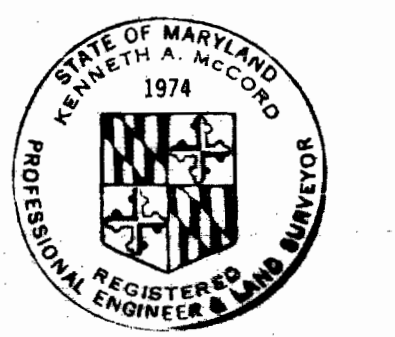
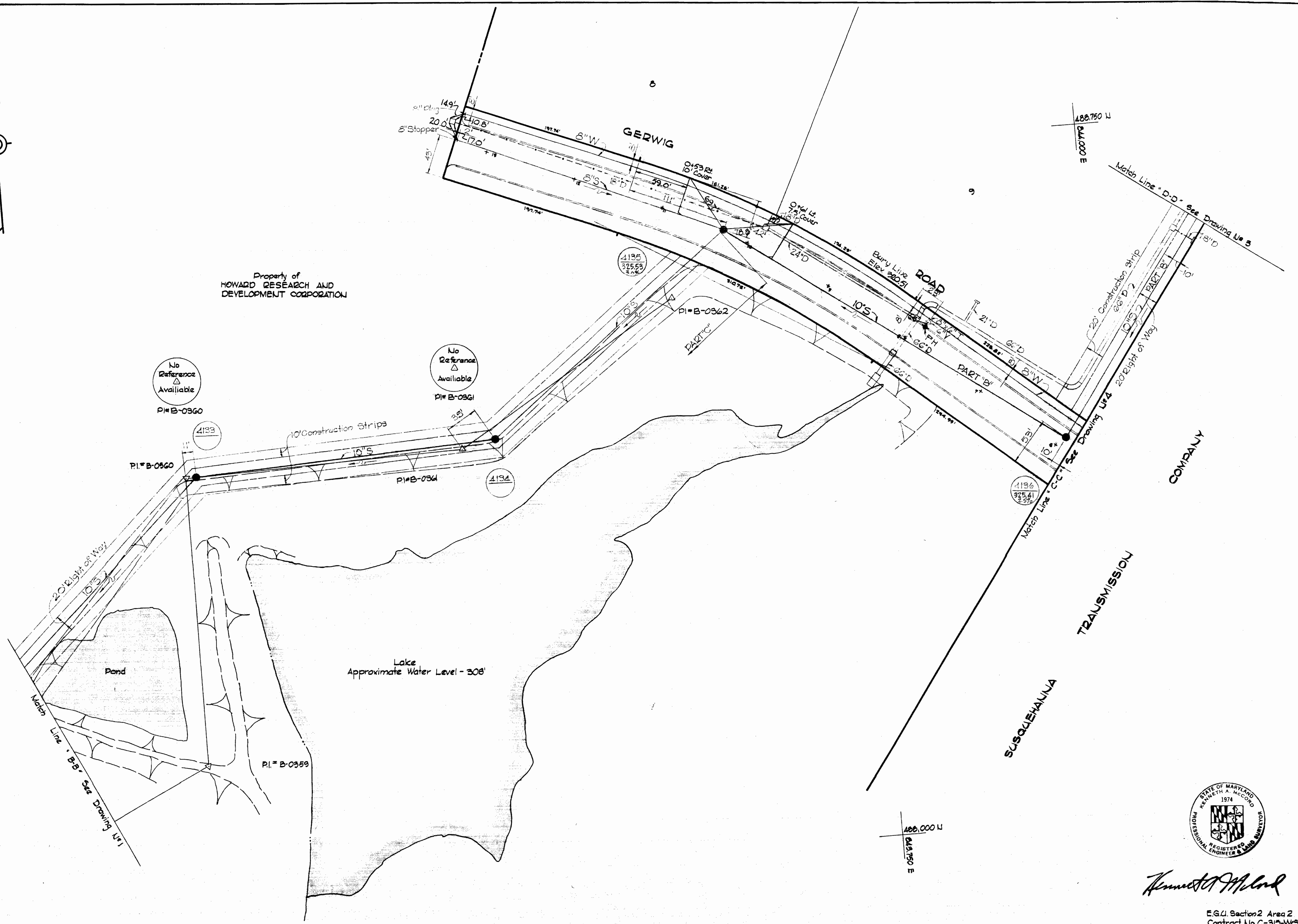


Property of
HOWARD RESEARCH AND
DEVELOPMENT CORPORATION

488,500 U
642,500 E

488,750 U
641,000 E

488,000 U
642,750 E



Kenneth A. McCord

E.G.U. Section 2 Area 2
Contract No. C-315-W&S

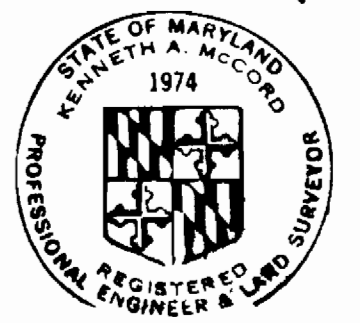
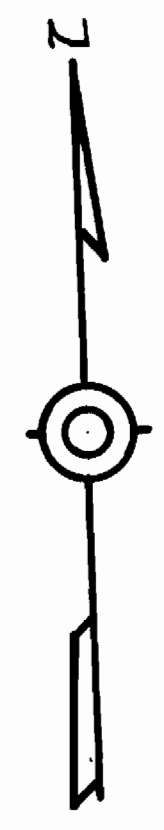
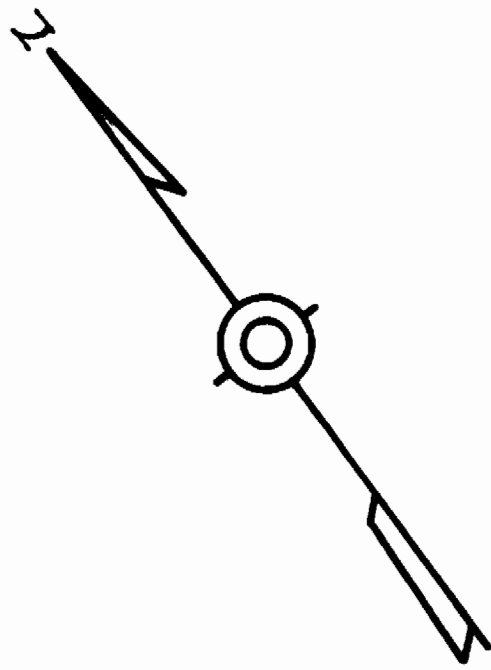
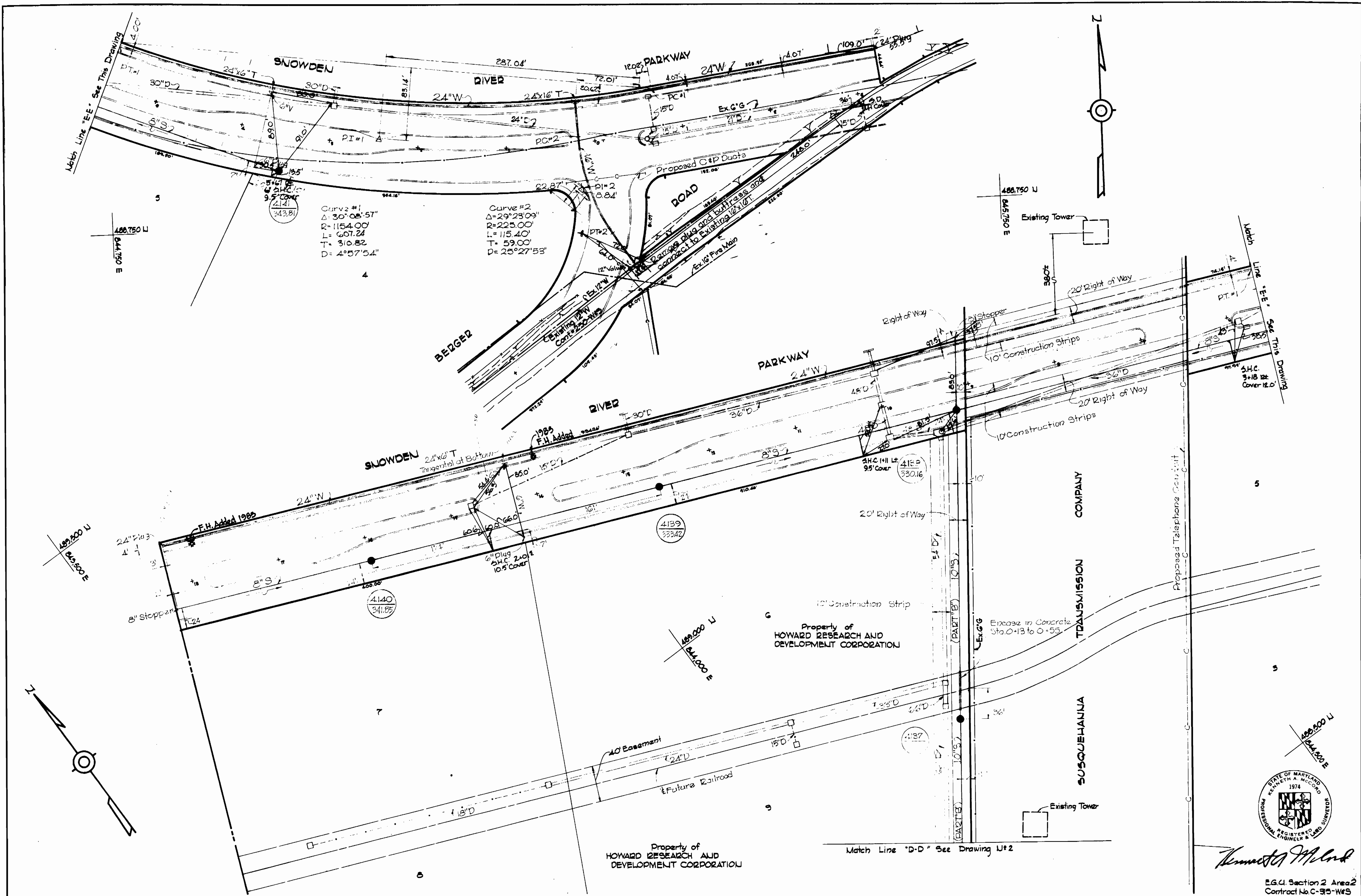
WHITMAN, REQUARDT & ASSOCIATES ENGINEERS 1304 ST. PAUL ST. BALTIMORE, MARYLAND	HOWARD COUNTY METROPOLITAN COMMISSION 10-9-69 <i>W O Pilbert</i> <small>DATE CHIEF ENGINEER</small>	CONTRACT NO. C-315-W & S	PLAN OF WATER AND SEWER MAINS	COLUMBIA E. G. U. WATER AND SEWER EXTENSIONS ELECTION DISTRICT GUILFORD No. 6	DRAWING NO. 2 OF 6 SCALE 1" = 50' <small>118:435</small>
---	---	--------------------------	----------------------------------	---	--

W. O. 6023-2

AS BUILT

JUL 2, 1970 FBW 4429

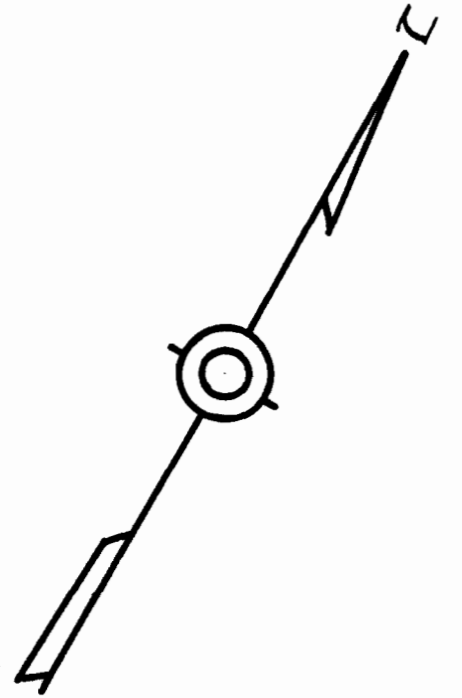
WS 315 W&S/2



Kenneth A. McCord

E.G.U. Section 2 Area 2
Contract No. C-95-WES

WHITMAN, REQUARDT & ASSOCIATES ENGINEERS 1304 ST. PAUL ST. BALTIMORE, MARYLAND	HOWARD COUNTY METROPOLITAN COMMISSION DATE: 10-9-69 W O Filled CHIEF ENGINEER	CONTRACT NO. C-315-WES	PLAN OF WATER AND SEWER MAINS	COLUMBIA E.G.U. WATER AND SEWER EXTENSIONS ELECTION DISTRICT GUILFORD No. 6	DRAWING NO. 3 OF 6 SCALE 1" = 50' 100'-00'
---	--	------------------------	----------------------------------	---	--



849,500 E
488,000 N

844,250 E
488,750 N

Match Line "C-C" See Drawing N#2

COMPANY

TRANSMISSION

SUSQUEHANNA

Proposed Telephone Conduit

GEDWIC

ROAD

ROAD

BERGER

Minimum Floor Elevation 522.0

4142
329.81

Ex. M.H.
3189

Ex. M.H.
3190

Future FH
Future G.W. 7
6" Plug
Connect to existing Mt and rebuild to suit

Ex. 12" Fire Main
Ex. 8" S
Ex. 12" Water Contract 250 W5

Ex. 24" D
Ex. 16" Fire Main

Proposed Widening

18" Twin branch Cok

844,250 E
488,750 N



Kenneth A. McLeod

E.G.U. Section 2 Area 2
Contract No. C-315-W5

WHITMAN, REQUARDT & ASSOCIATES
ENGINEERS
1304 ST. PAUL ST.
BALTIMORE, MARYLAND

HOWARD COUNTY METROPOLITAN COMMISSION
10-9-69 *W O Pulbert*
DATE CHIEF ENGINEER

CONTRACT NO. C-315-W & S

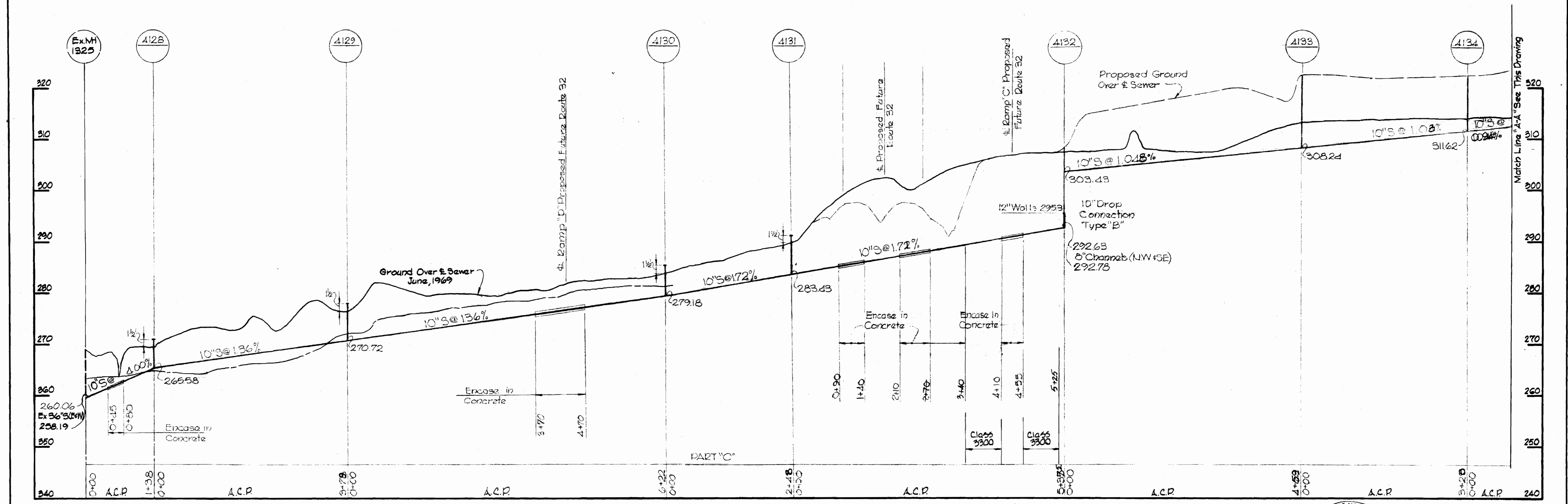
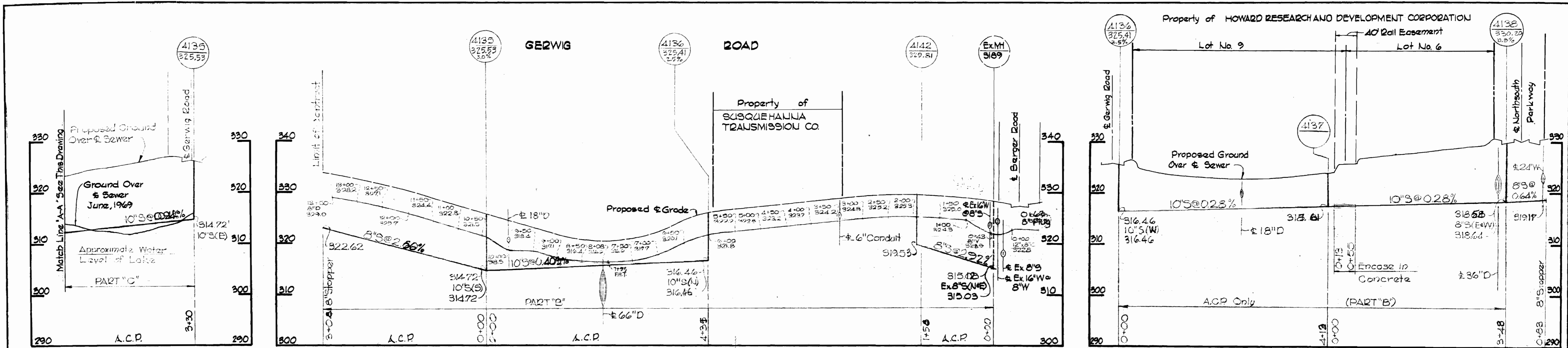
PLAN OF
WATER AND SEWER MAINS

COLUMBIA
E. G. U. WATER AND SEWER EXTENSIONS
ELECTION DISTRICT GUILFORD No. 6

DRAWING NO. 4 OF 6
SCALE 1" = 50'
497-485
488-485

WS 315-W&S/4

WS 315-W&S/5



Kenneth A. McCord

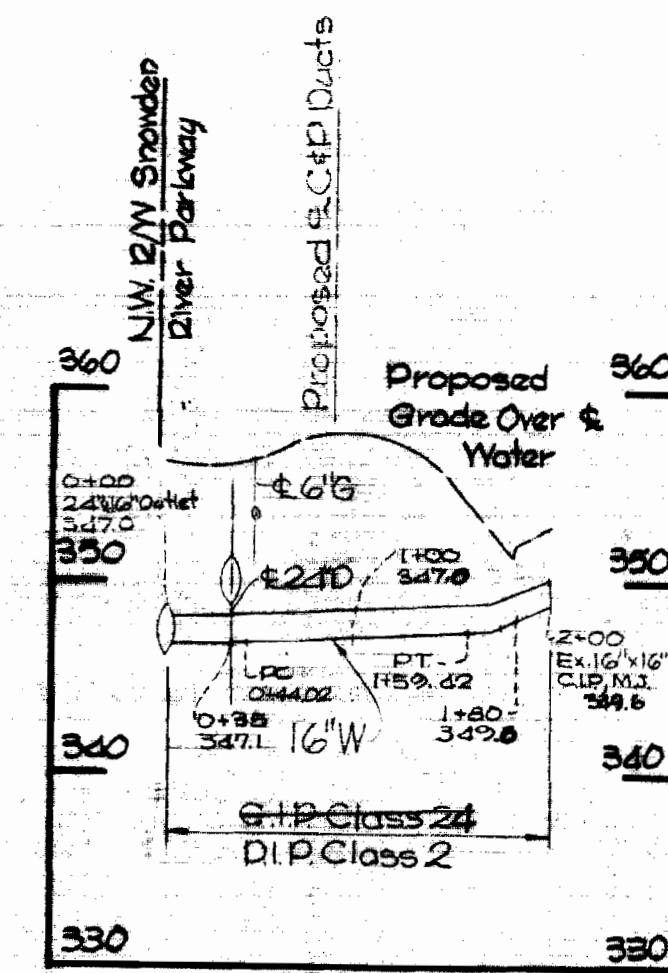
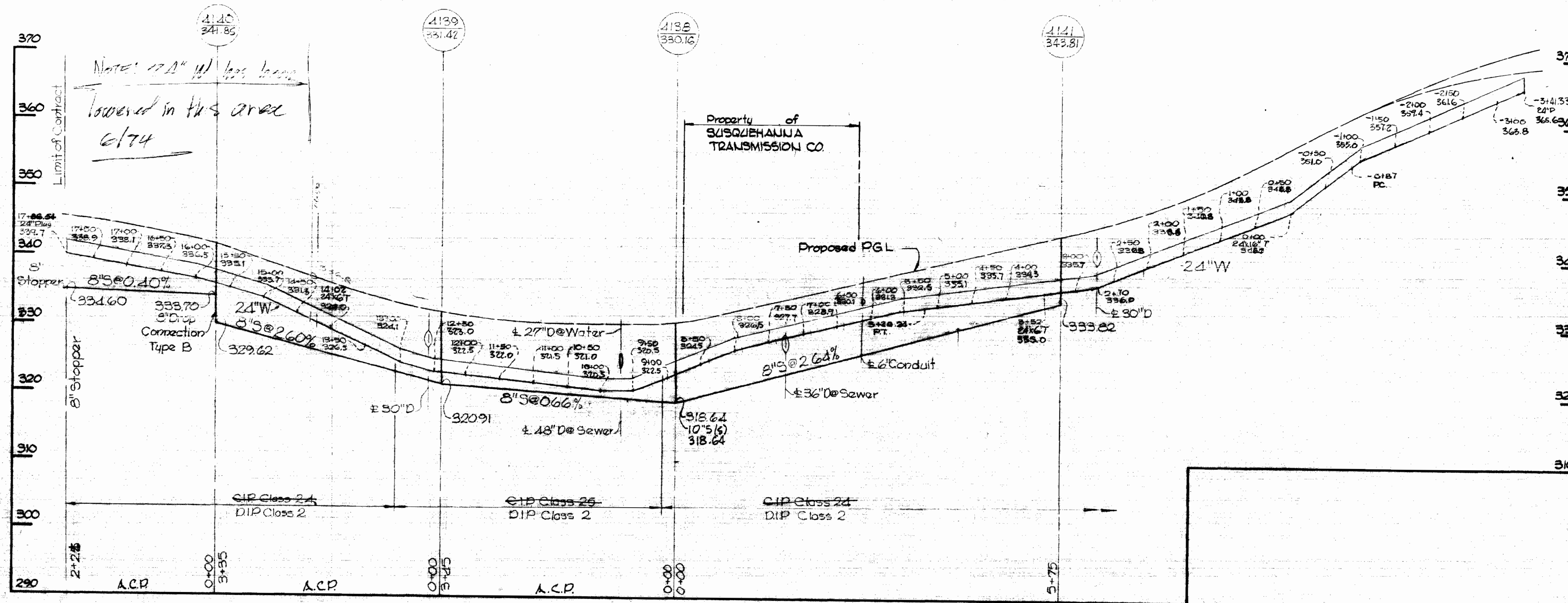
<p>WHITMAN, REQUARDT & ASSOCIATES ENGINEERS 1304 ST. PAUL ST. BALTIMORE, MARYLAND</p>	<p>HOWARD COUNTY METROPOLITAN COMMISSION 10-9-69 <i>W O Felber</i> DATE CHIEF ENGINEER</p>	<p>CONTRACT NO. C-315-W & S</p>	<p>PROFILES OF WATER AND SEWER MAINS</p>	<p>COLUMBIA E. G. U. WATER AND SEWER EXTENSIONS ELECTION DISTRICT GUILFORD No. 6</p>	<p>DRAWING NO. 5 OF 6</p>	<p>SCALE H¹:V¹⁰ V¹:H¹⁰</p>
---	--	-------------------------------------	--	--	-----------------------------------	--

W. O. 6023-2

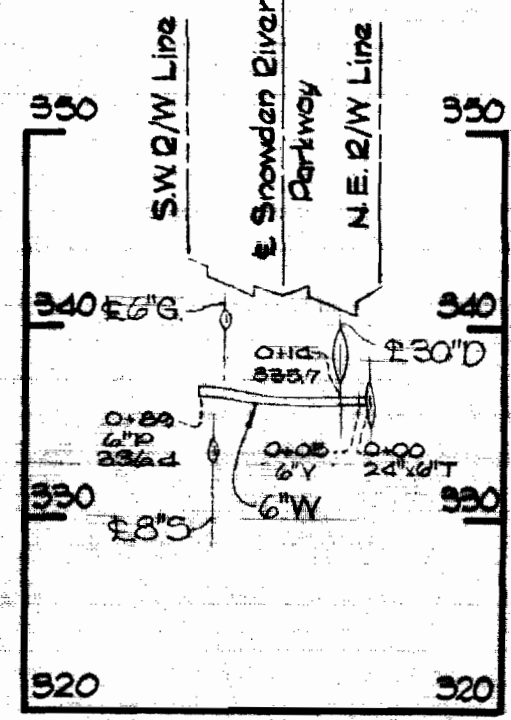
JULY 2, 1970

AS BUILT

SNOWDEN RIVER PARKWAY

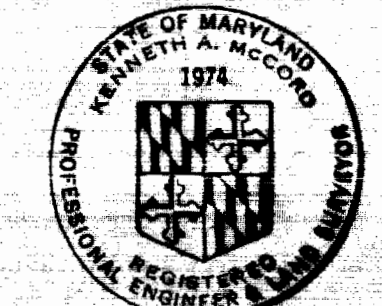
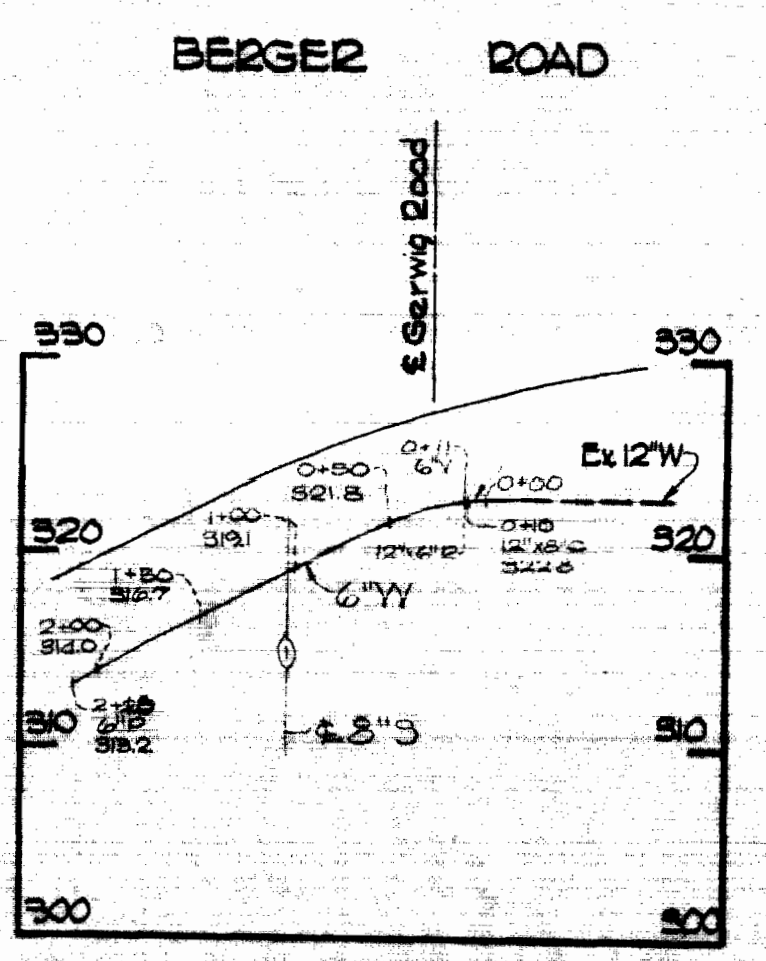
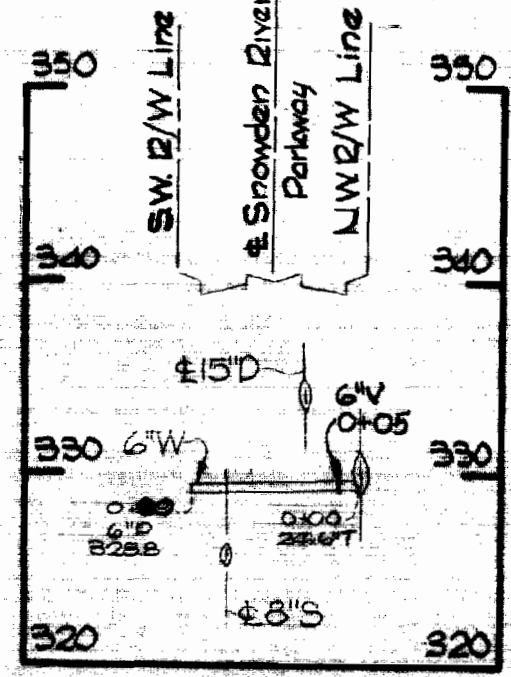


6" WATER CROSSING @ STATION 3+76



PROFILES
H:V = 10:1
Scale: V.P. = 10'

6" WATER CROSSING @ STATION 14+28



Kenneth A. McLeod

WHITMAN, REQUARDT & ASSOCIATES ENGINEERS 1304 ST. PAUL ST. BALTIMORE, MARYLAND	HOWARD COUNTY METROPOLITAN COMMISSION 10-9-69 <i>W. O. Filbert</i> DATE CHIEF ENGINEER	CONTRACT NO. C-315-W 8 S	PROFILES AND DETAILS OF WATER AND SEWER MAINS	COLUMBIA E. G. U. WATER AND SEWER EXTENSIONS ELECTION DISTRICT GUILFORD No. 6	DRAWING NO. 6 OF 6 SCALE AS SHOWN
---	--	--------------------------	--	---	--------------------------------------