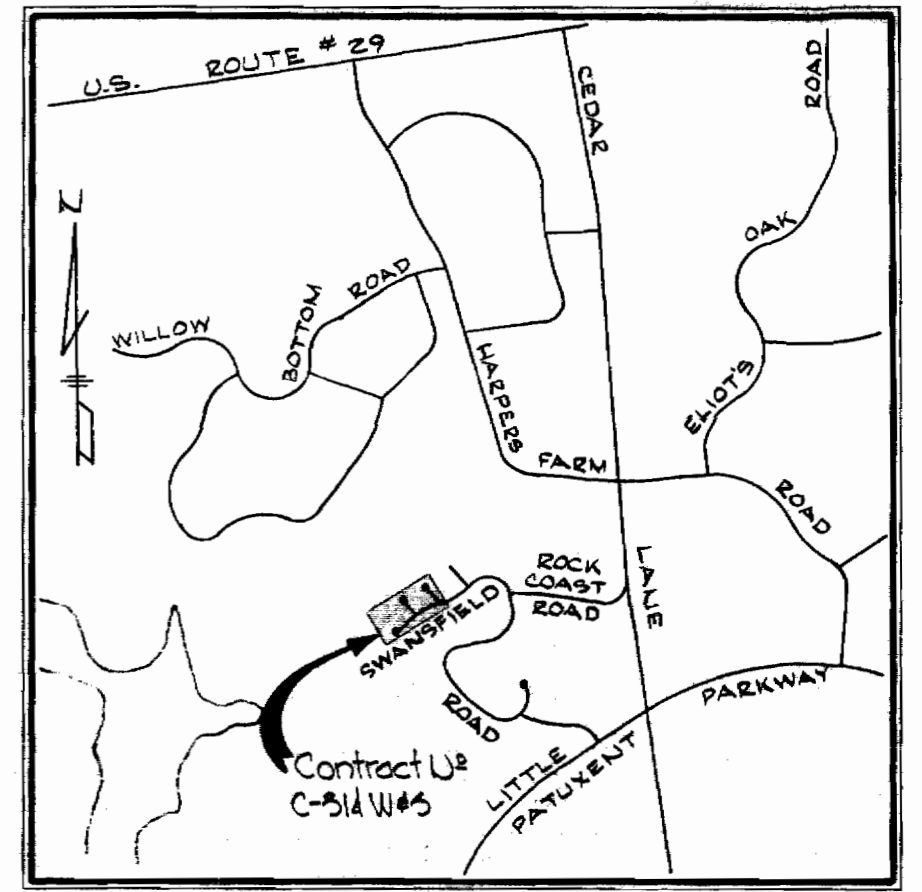
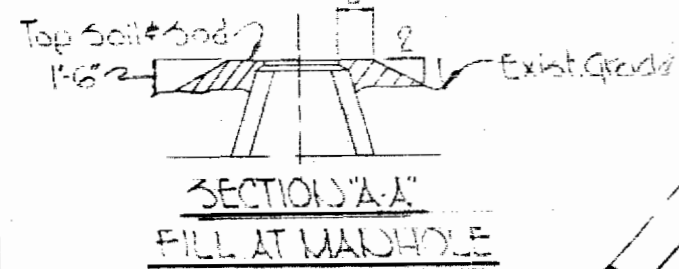
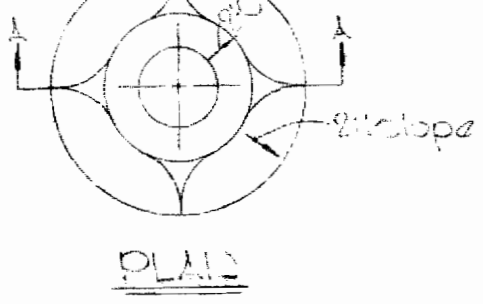


W.R.#A. BM#B-4 Elev. 359.829
 R.R. Spike in 15' Poplar 40' =
 Rt. of R.I.#B-021G.

△	6-26-69	Added Rim Elevations
△	6-16-69	Added S.H.C. to lot 12816B.
U.S.	Date	Revision

QUANTITIES	
8" Sewer	1920'
6" Water	1070'
3" Water	1220'
Fire Hydrants	5

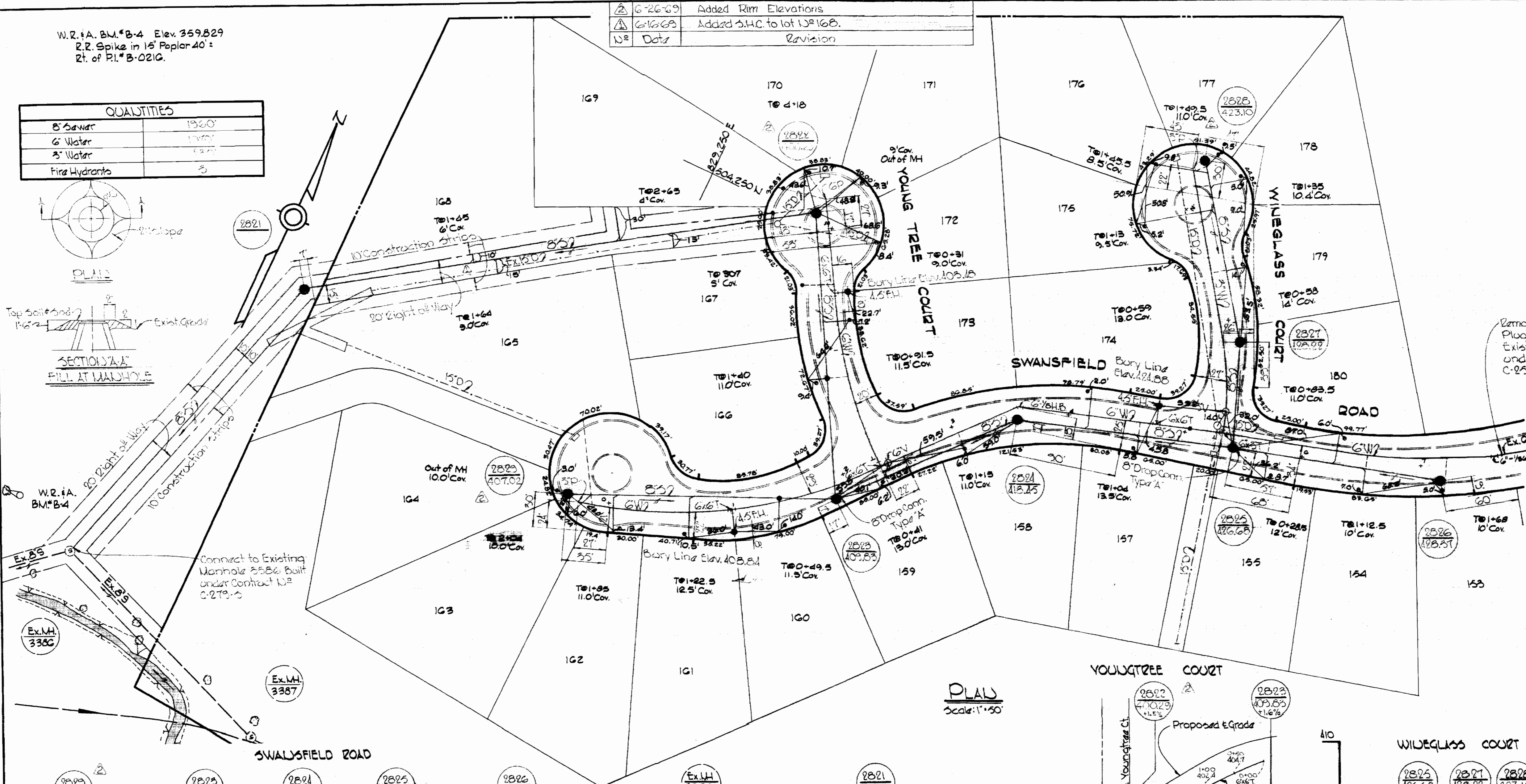


VICINITY MAP
 Scale: 1"=2,000'

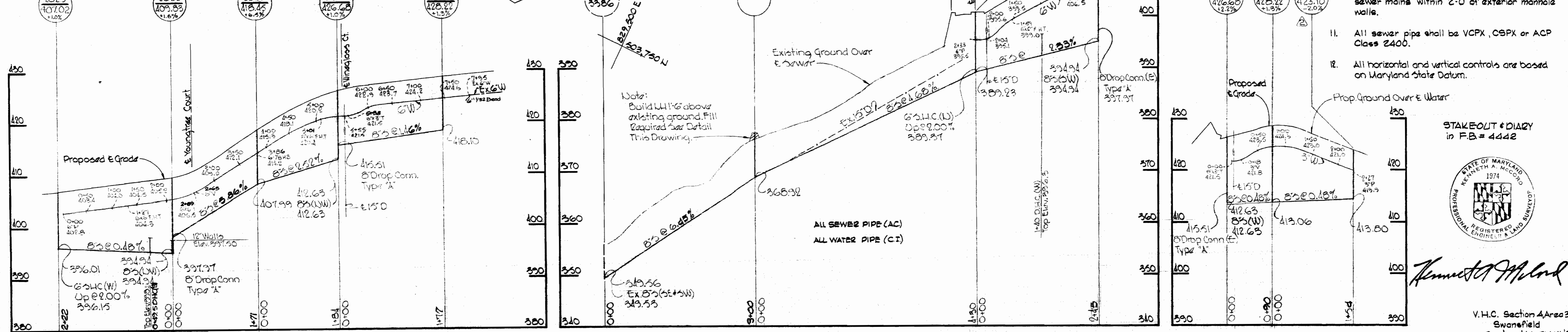
Remove buttress and Plug and Connect to Existing 6" Water built under Contract C-25B-W#5.

GENERAL NOTES

1. Approximate location of existing mains are shown. The Contractor shall take all necessary precautions to protect existing mains and services and maintain uninterrupted supply. Any damage incurred shall be repaired immediately.
2. All pipe elevations shown are invert (I) elevations.
3. The Contractor shall locate existing utilities a minimum of two weeks in advance of construction operations in vicinity of utilities.
4. For all standard details see standards bound in Specifications.
5. All water mains to be C.I.P. or D.I.P. and have a minimum of 3 1/2' cover.
6. Block all fitting with concrete, see standard details bound in Specifications.
7. Buryline elevations on fire hydrants shall be set to elevations shown on drawings.
8. All fire hydrants shall be strapped to the tee and shall be buttressed with concrete in accordance with Standard Details.
9. Clear all utilities by a minimum of 6', clear all poles by 2'-0" minimum or tunnel as required.
10. The Contractor shall provide a joint in all sewer mains within 2'-0" of exterior manhole walls.
11. All sewer pipe shall be VCPX, CSPX or ACP Class 2400.
12. All horizontal and vertical controls are based on Maryland State Datum.



PLAN
 Scale: 1"=50'

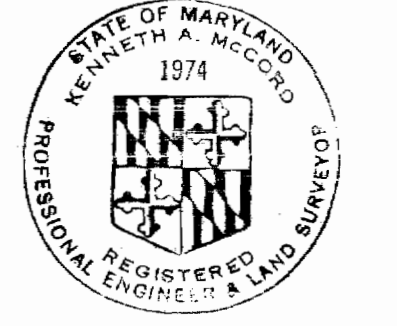


PROFILES Scale: Horiz. 1"=100' Vert. 1"=10'

Note: Build 1/4" above existing ground. Fill Required See Detail This Drawing.

ALL SEWER PIPE (AC)
 ALL WATER PIPE (CI)

STAKE-OUT & DIALY
 in F.B. = 4442



Kenneth A. McLeod

V.H.C. Section 4 Area 3
 Swansfield
 Contract No. 314-W#5

WHITMAN, REQUARDT & ASSOCIATES ENGINEERS 1304 ST. PAUL ST. BALTIMORE, MARYLAND	HOWARD COUNTY METROPOLITAN COMMISSION 6-10-69 <i>W.O. Palbert</i> CHIEF ENGINEER	CONTRACT NO. C-314-W#5	PLAN & PROFILES OF WATER & SEWER MAINS	COLUMBIA VILLAGE OF HARPER'S CHOICE ELECTION DISTRICT CLARKSVILLE NO. 5	DRAWING NO. 1 OF 1	SCALE AS SHOWN
					Nov. 24, 1969	AS BUILT

WSPM-41-SM