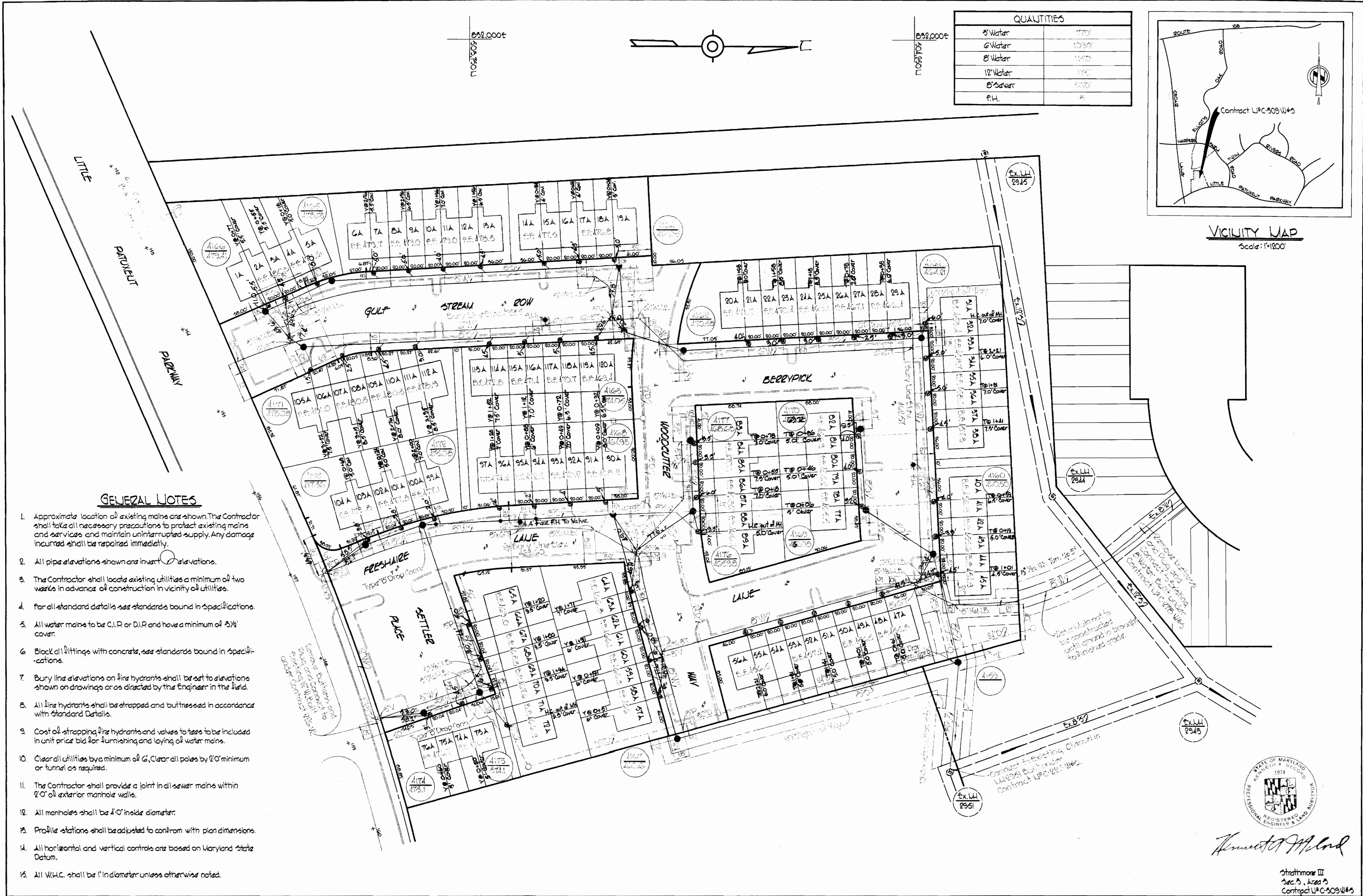
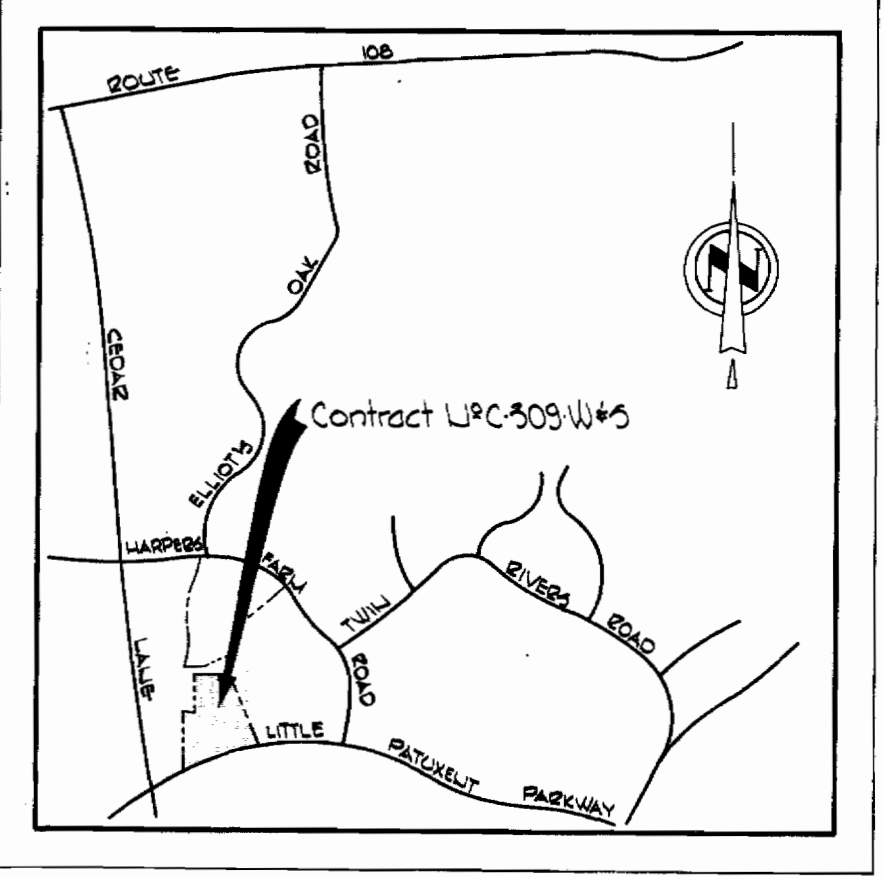


WS 309W & S/1



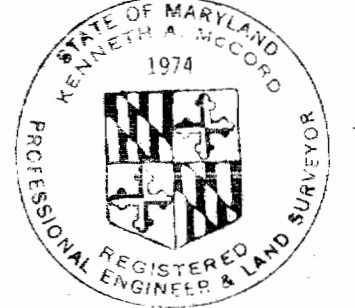
QUANTITIES	
8" Water	1770'
6" Water	1030'
8" Water	1160'
12" Water	130'
8" Sewer	2070'
F.H.	2



VICINITY MAP
Scale: 1"=1200'

GENERAL NOTES

1. Approximate location of existing mains are shown. The Contractor shall take all necessary precautions to protect existing mains and services and maintain uninterrupted supply. Any damage incurred shall be repaired immediately.
2. All pipe elevations shown are invert elevations.
3. The Contractor shall locate existing utilities a minimum of two weeks in advance of construction in vicinity of utilities.
4. For all standard details see standards bound in Specifications.
5. All water mains to be C.I.P. or D.I.P. and have a minimum of 3/8" cover.
6. Block all fittings with concrete, see standards bound in Specifications.
7. Bury line elevations on fire hydrants shall be set to elevations shown on drawings or as directed by the Engineer in the field.
8. All fire hydrants shall be strapped and buttressed in accordance with Standard Details.
9. Cost of strapping fire hydrants and valves to tests to be included in unit price bid for furnishing and laying of water mains.
10. Clear all utilities by a minimum of 6'. Clear all poles by 20' minimum or tunnel as required.
11. The Contractor shall provide a joint in all sewer mains within 2'-0" of exterior manhole walls.
12. All manholes shall be 4'-0" inside diameter.
13. Profile stations shall be adjusted to conform with plan dimensions.
14. All horizontal and vertical controls are based on Maryland State Datum.
15. All W.H.C. shall be 1" in diameter unless otherwise noted.

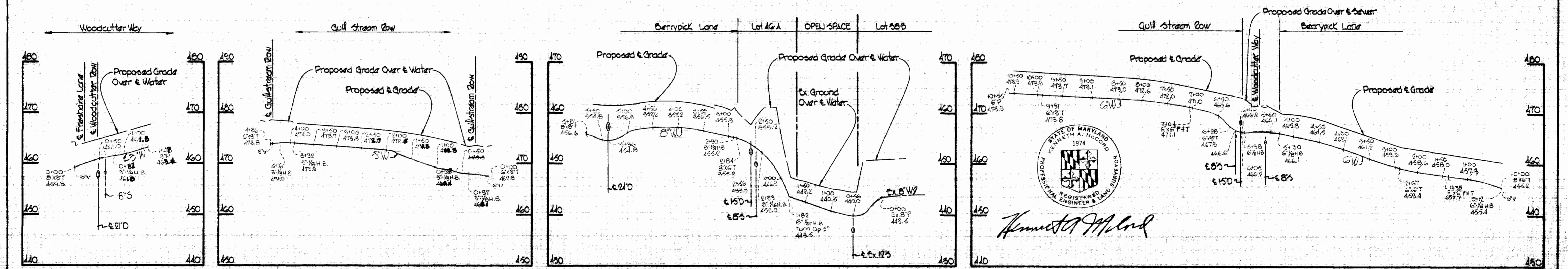
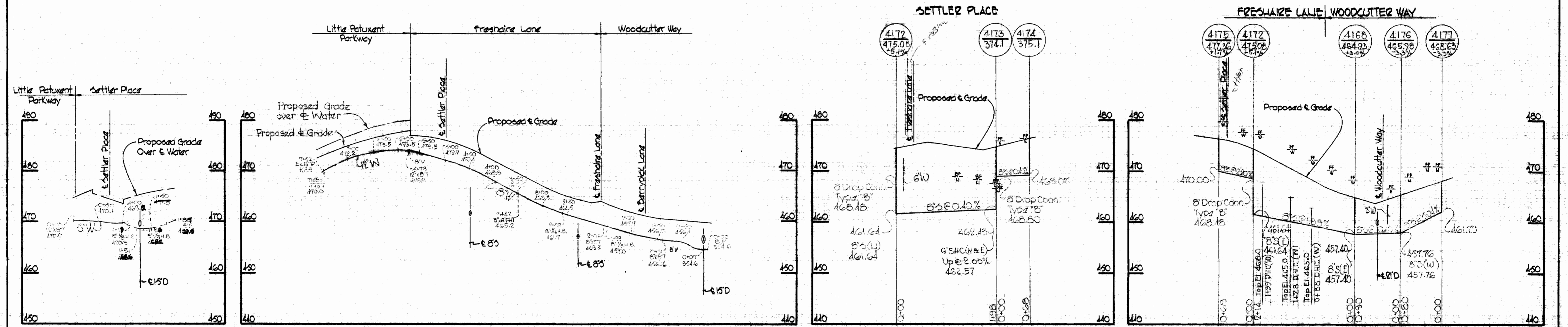
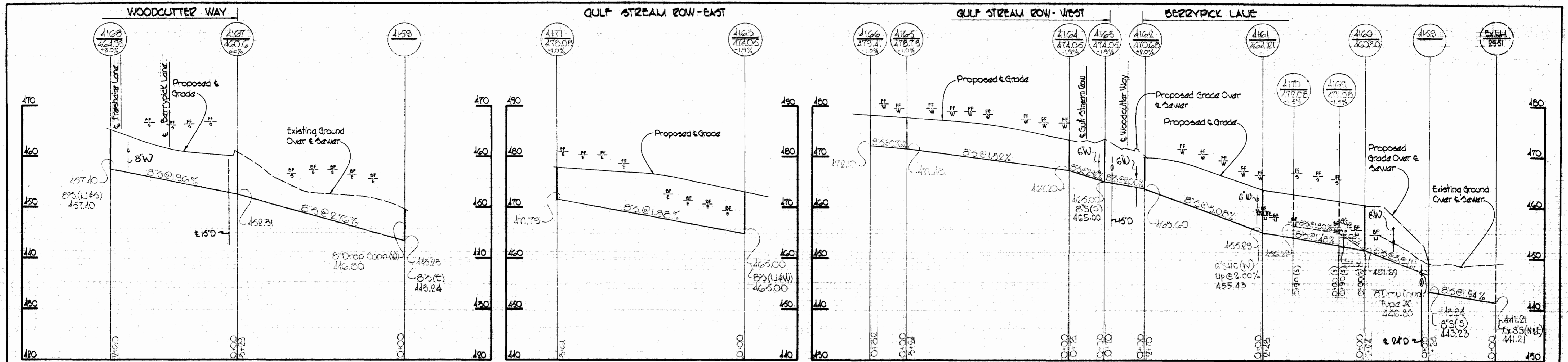


Kenneth A. McCord

Stratmore III
Sec. 3, Art. 23
Contract U.P.C-309 W & S

WHITMAN, REQUARDT & ASSOCIATES ENGINEERS 1304 ST. PAUL ST. BALTIMORE, MARYLAND	HOWARD COUNTY METROPOLITAN COMMISSION DATE: 10-8-69 <i>W O Felbert</i> CHIEF ENGINEER	CONTRACT NO. C-309 W & S	PLAN OF WATER & SEWER MAINS	COLUMBIA VILLAGE OF HARPERS CHOICE ELECTION DISTRICT CLARKSVILLE NO.5	DRAWING NO. 1 OF 2	SCALE 1" = 50'	501.476 503.476
--	---	-------------------------------------	--	--	---------------------------	-----------------------	--------------------

WS 309-W&S/2



WHITMAN, REQUARDT & ASSOCIATES
 ENGINEERS
 1304 ST. PAUL ST.
 BALTIMORE, MARYLAND

DEPARTMENT OF PUBLIC WORKS
 HOWARD COUNTY, MARYLAND
 10.8.69
 DATE

CONTRACT NO. C-309 W&S
 CHIEF-BUREAU OF WATER AND SEWER

PROFILES OF
 WATER & SEWER MAINS

COLUMBIA
 VILLAGE OF HARPER'S CHOICE
 ELECTION DISTRICT CLARKSVILLE No.5

DRAWING NO. 2 OF 2
 SCALE H=1"=100' V=1"=10'
 AS BUILT JULY 1, 1970

W. O. GORDON