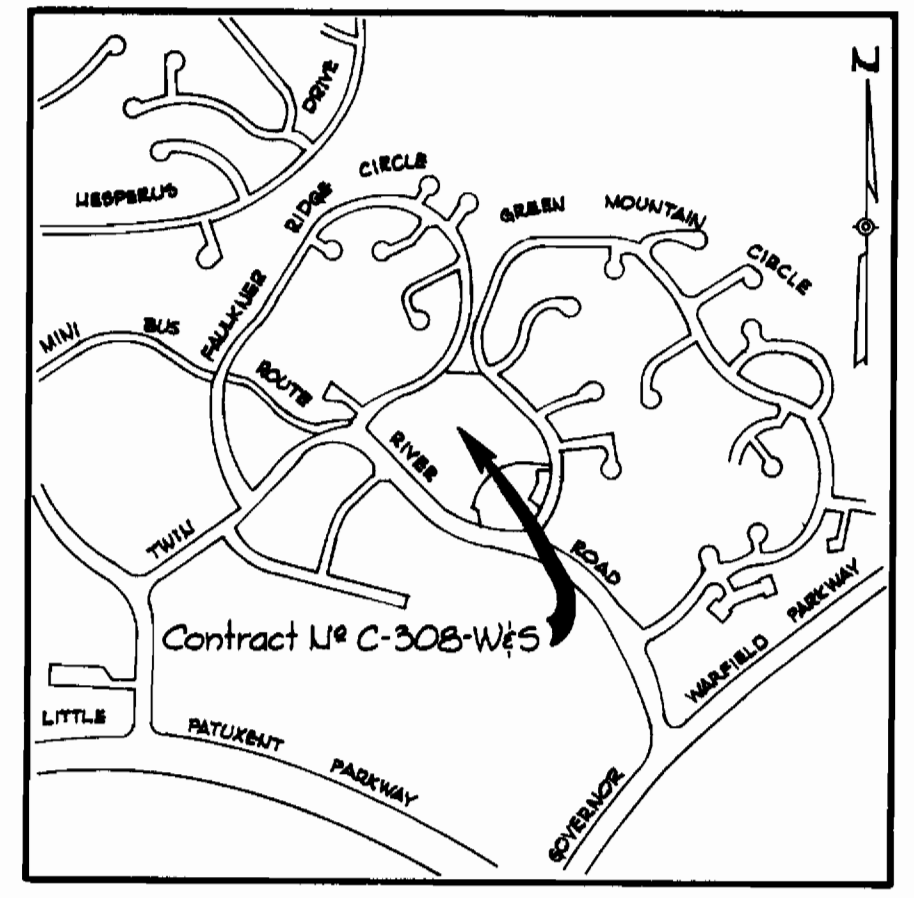
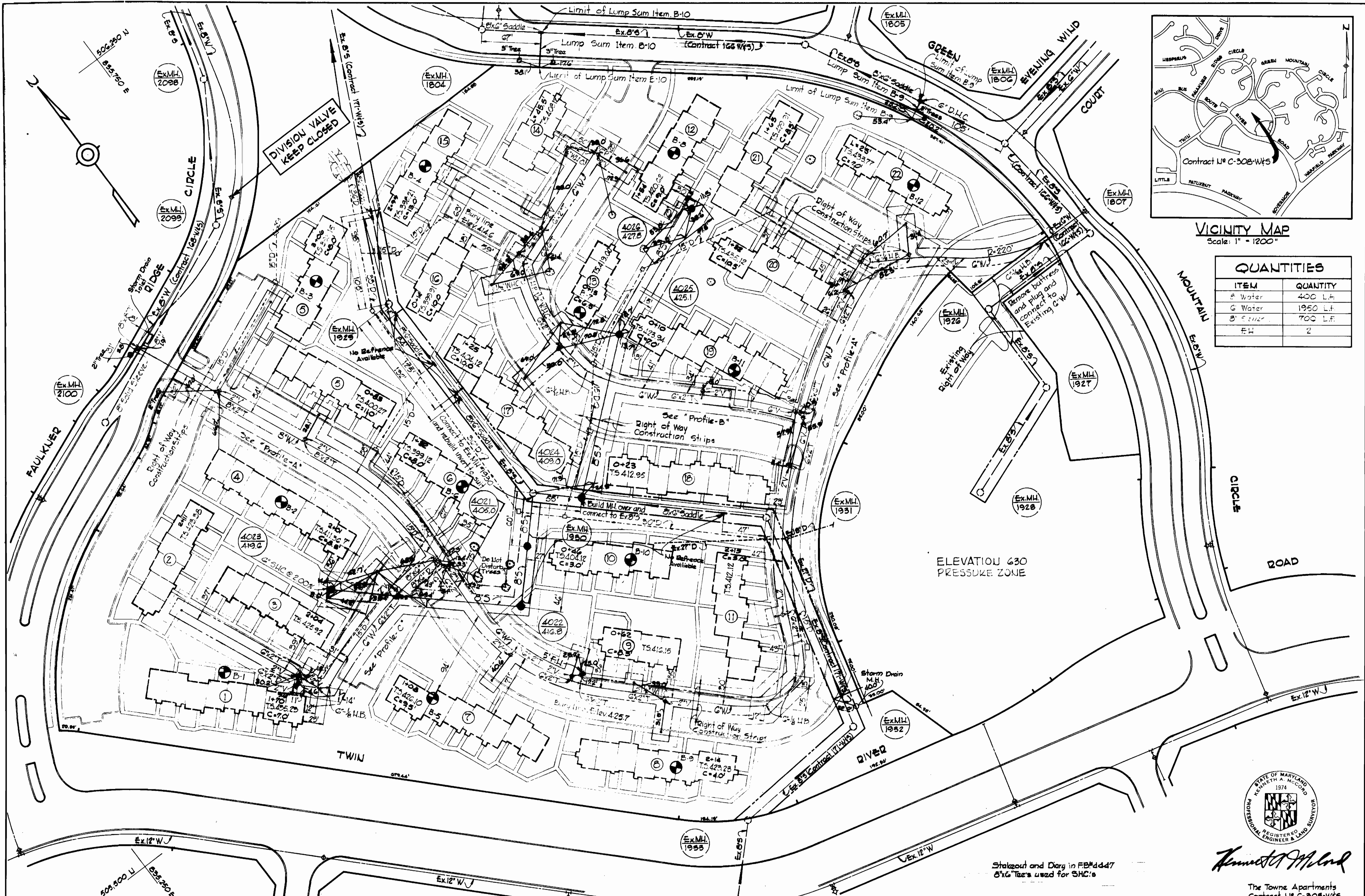


WS 308-W4 S/1



VICINITY MAP
Scale: 1" = 1200'

QUANTITIES	
ITEM	QUANTITY
A Water	400 L.F.
G Water	1950 L.F.
B Sewer	700 L.F.
EH	2



Kenneth A. McCord

Stakeout and Diary in FB#4447
5"x8" Tables used for SHC's

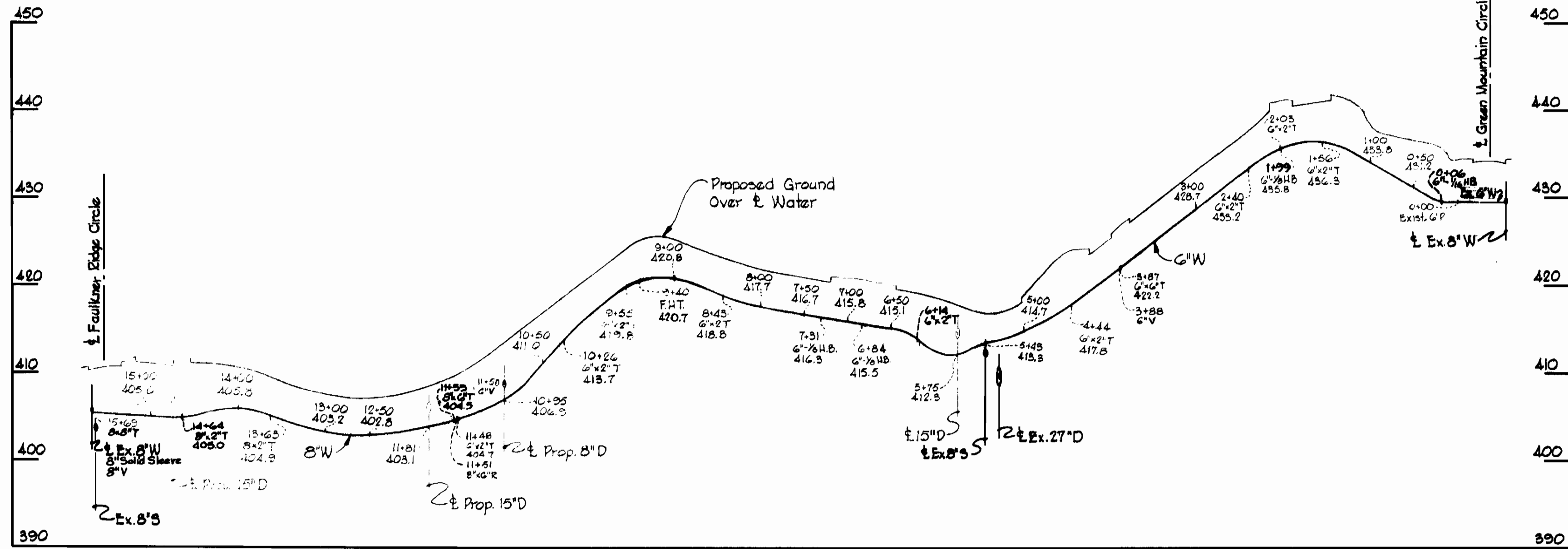
The Towne Apartments
Contract No. C-308-W4S

WHITMAN, REQUARDT & ASSOCIATES ENGINEERS 1304 ST. PAUL ST. BALTIMORE, MARYLAND	HOWARD COUNTY METROPOLITAN COMMISSION DATE: 5-5-69 Chief Engineer: <i>W. O. P. [Signature]</i>	CONTRACT NO. C-308W4S	PLAN OF WATER & SEWER MAINS	COLUMBIA VILLAGE OF WILDE LAKE ELECTION DISTRICT - CLARKVILLE No. 5	DRAWING NO. 1 OF 2 SCALE 1" = 50'
---	--	-----------------------	--------------------------------	---	--------------------------------------

W. O. 6025-2

JAN. 28, 1970 AS BUILT

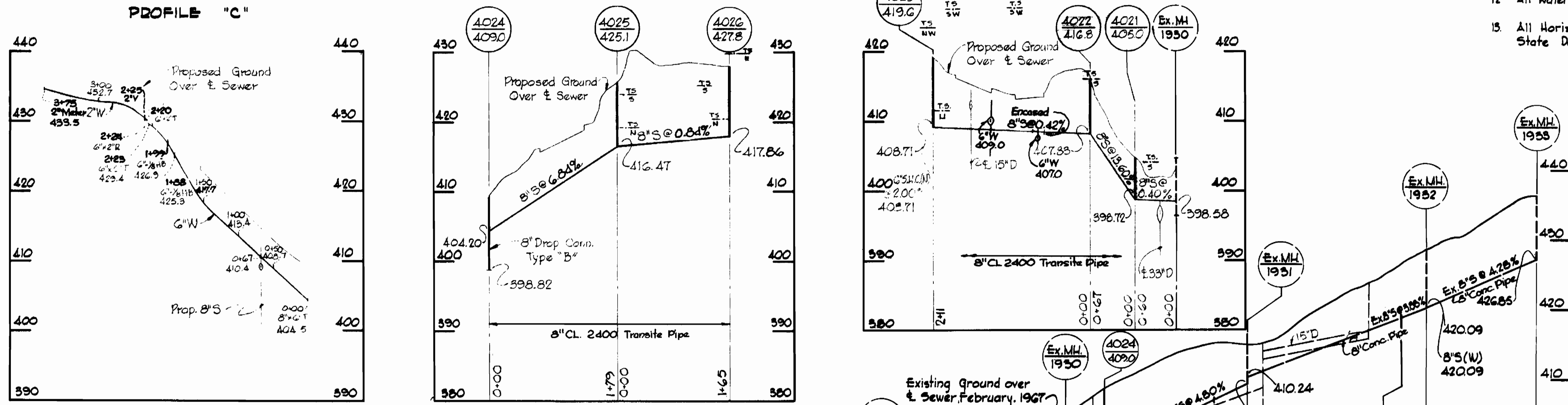
PROFILE "A"



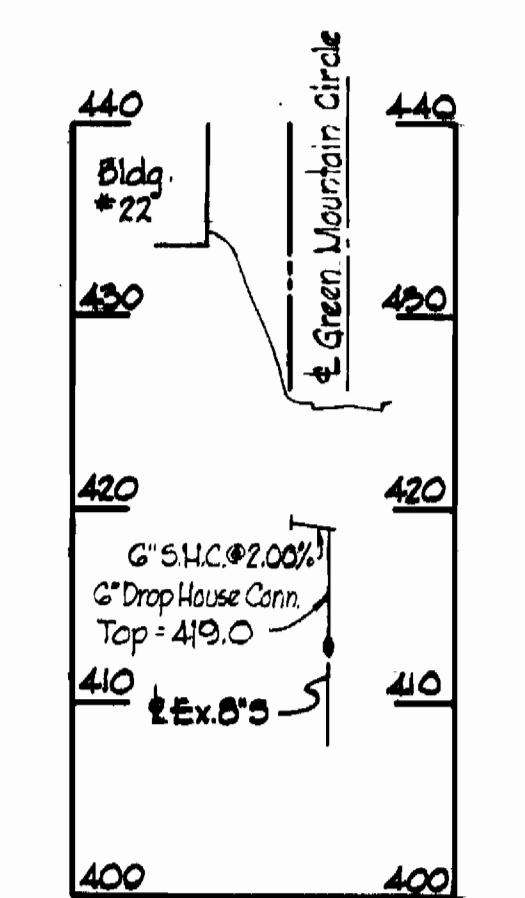
GENERAL NOTES

1. Approximate location of existing mains are shown. The Contractor shall take all necessary precautions to protect existing mains and services and maintain uninterrupted supply. Any damage incurred shall be repaired immediately.
2. All pipe elevations shown are invert elevations.
3. The Contractor shall locate existing utilities a minimum of two weeks in advance of construction operation in vicinity of utilities.
4. For all Standard Details see standards bound in Specifications.
5. All water mains to be C.I.P. or D.I.P. and have a minimum of 3' cover.
6. Block all fittings with concrete, see standard details bound in Specifications.
7. Bury line elevations on fire hydrants shall be set to elevations shown on drawings.
8. All Fire Hydrants shall be strapped to tee and shall be buttressed with concrete in accordance with Standard Details.
9. Clear all utilities by a minimum of 6', clear all poles by 2'-0" minimum or tunnel as required.
10. The Contractor shall provide a joint in all sewer mains within 2'-0" of exterior manhole walls.
11. All sewer pipe shall be VCPX, CSPX, or ACP Class 8400.
12. All Water Service Connections shall be 8" dia. unless otherwise noted.
13. All Horizontal and Vertical Controls are base on Maryland State Datum.

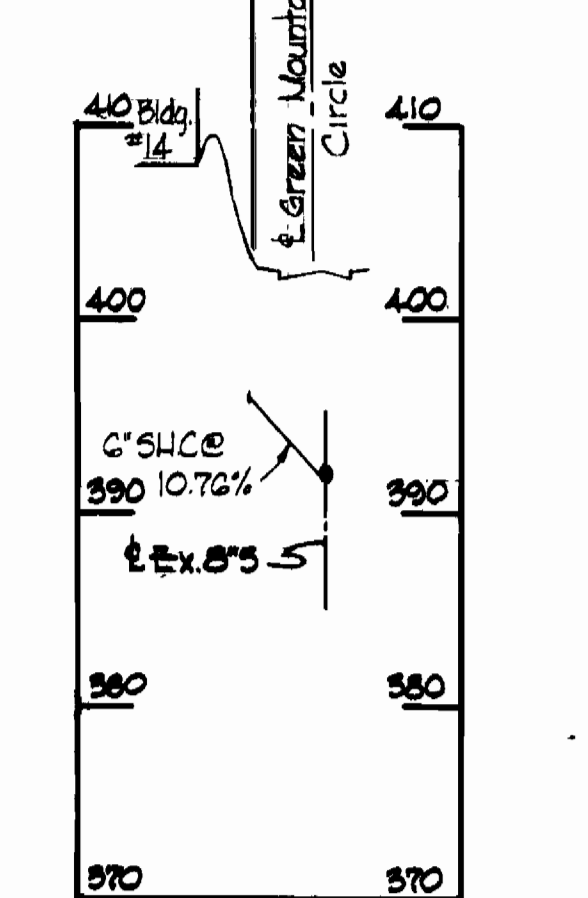
PROFILE "C"



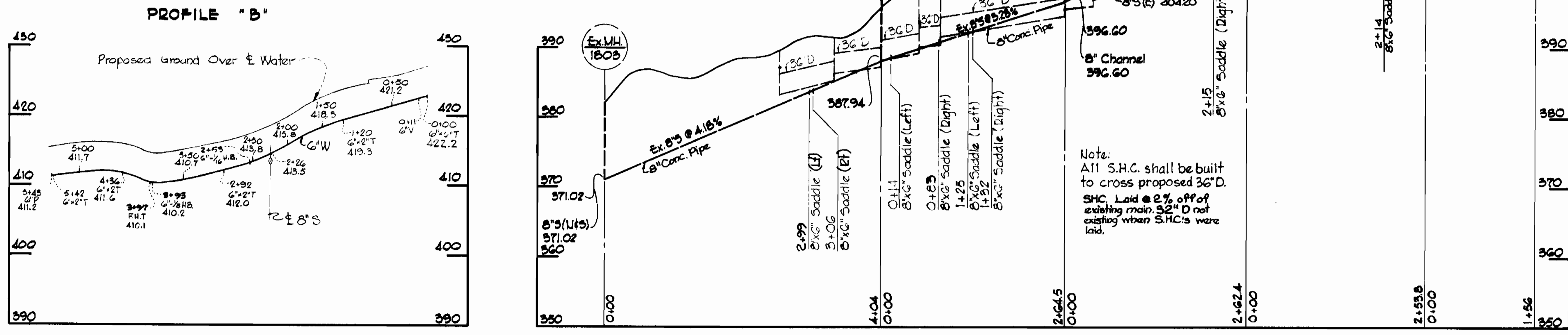
LUMP SUM ITEM No B-9



LUMP SUM ITEM No B-10



PROFILE "B"



Note:
All S.H.C. shall be built to cross proposed 36" D. S.H.C. Laid @ 2% off of existing main. 36" D not existing when S.H.C.'s were laid.



Kenneth A. McCord

The Towne Apartments
Contract No. C-308-W/5

WHITMAN, REQUARDT & ASSOCIATES ENGINEERS 1304 ST. PAUL ST. BALTIMORE, MARYLAND	HOWARD COUNTY METROPOLITAN COMMISSION 5-5-69 W. O. P. <i>W. O. P.</i> CHIEF ENGINEER	CONTRACT NO. C-308W/5	PROFILES OF WATER & SEWER MAINS	COLUMBIA VILLAGE OF WILDE LAKE ELECTION DISTRICT-CLARKSVILLE No.5	DRAWING NO. 2 OF 2	SCALE H-1"=100' V-1"=10'
---	---	-----------------------	------------------------------------	---	--------------------------	--------------------------------

W. O. C025-2

JAN. 28, 1970 AS BUILT

WS 308-W/5/2