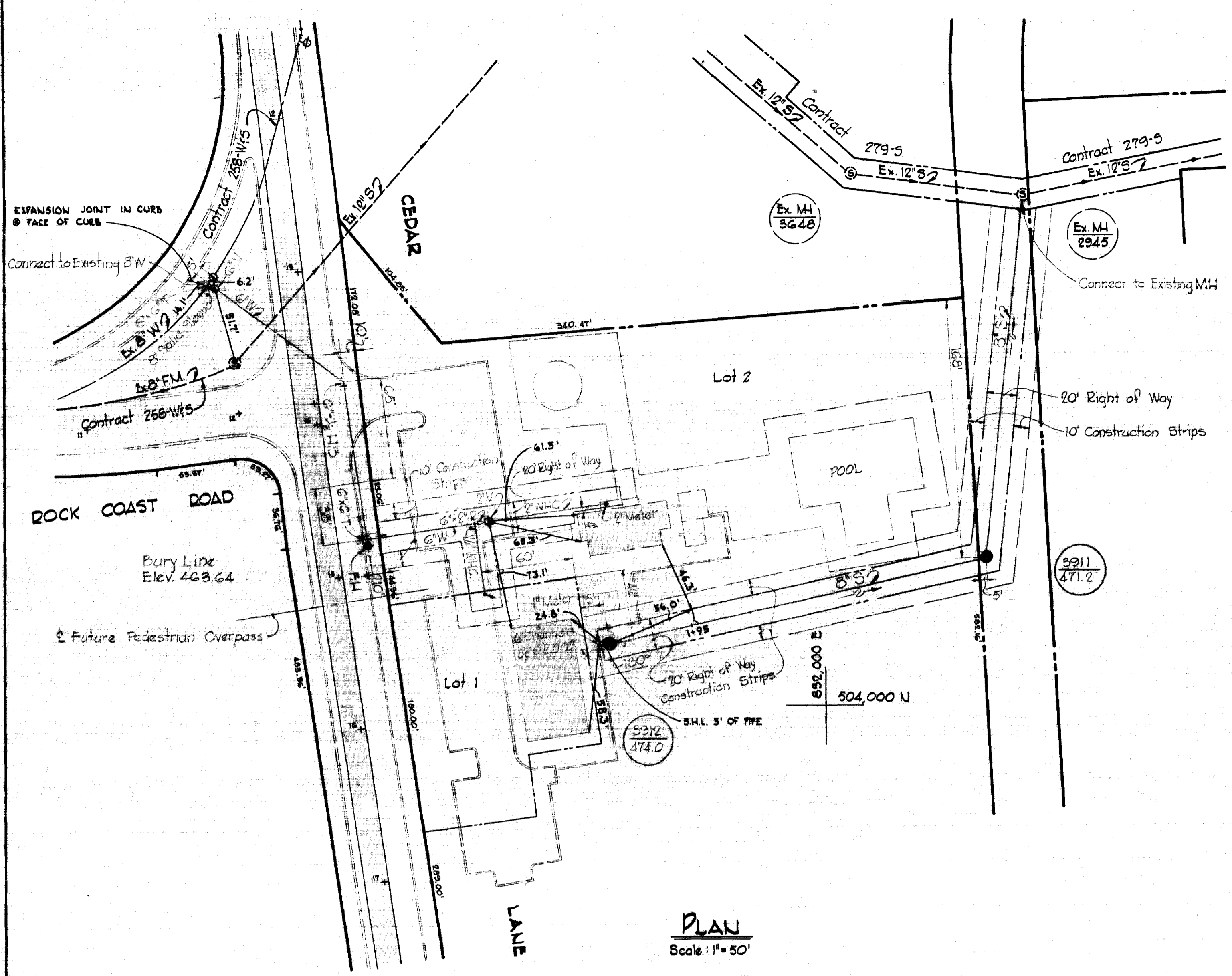


VICINITY MAP
Scale: 1" = 2000'

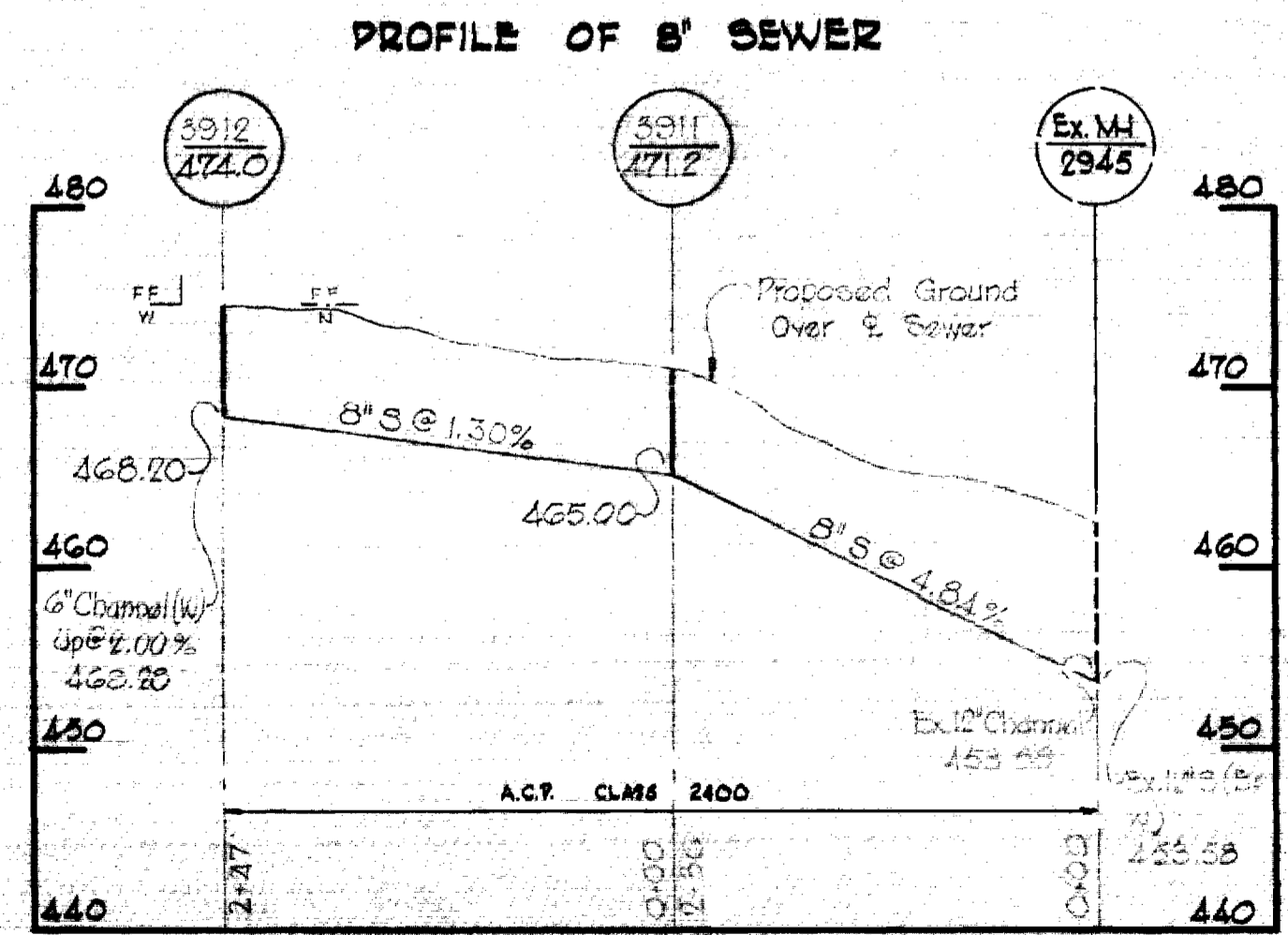
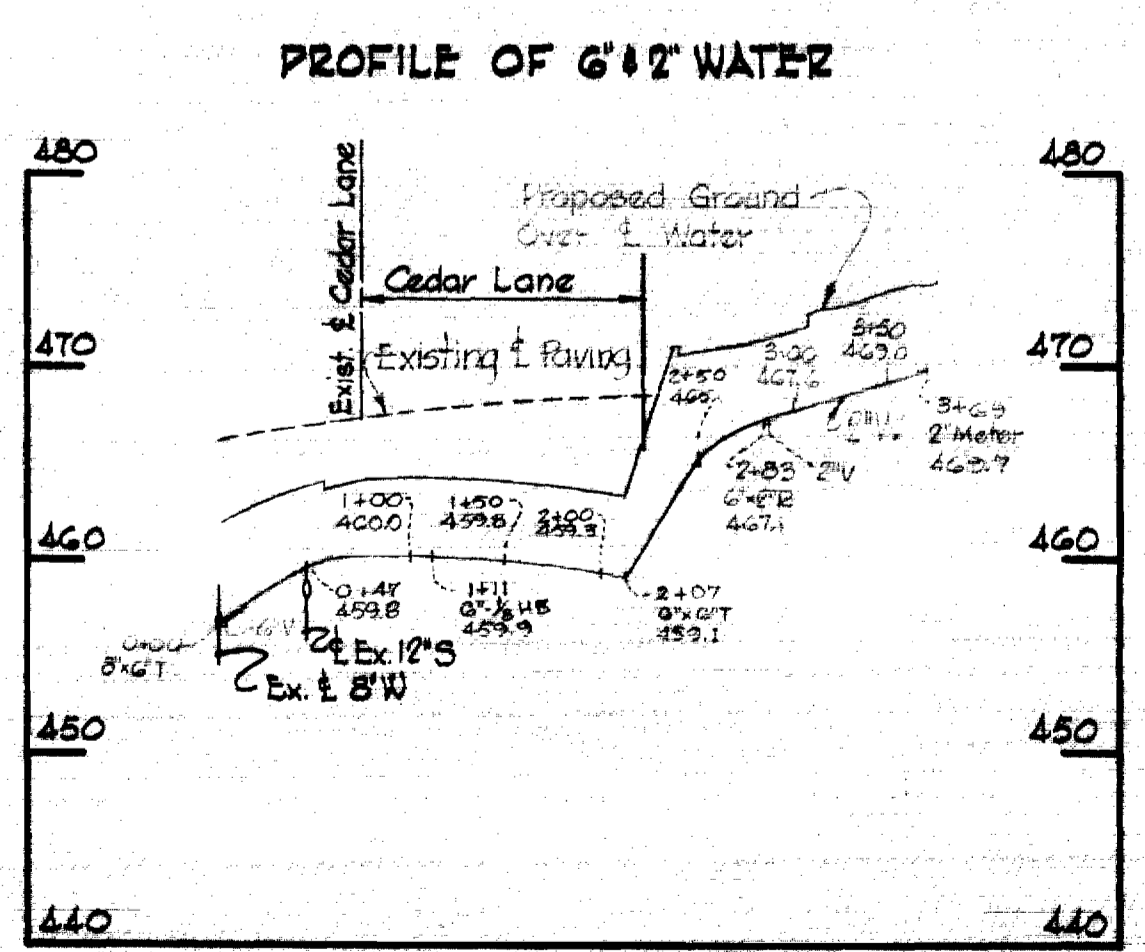


PLAN
Scale: 1" = 50'

GENERAL NOTES

1. Approximate locating of existing mains are shown. The Contractor shall take all necessary precautions to protect existing mains and services and maintain uninterrupted supply. Any damage incurred shall be repaired immediately.
2. All pipe elevations shown are invert elevations.
3. The Contractor shall locate existing utilities a minimum of two weeks in advance of construction operations in vicinity of utilities.
4. For all standard details see standards bound in Specifications.
5. All water mains to be C.I.P. or D.I.P. and have a minimum of 3/4' cover.
6. Block all fittings with concrete, see standard details bound in Specifications.
7. Buryline elevations on fire hydrants shall be set to elevations shown on drawings.
8. All Fire Hydrants shall be strapped and buttressed with concrete in accordance with Standard Details.
9. Clear all utilities by a minimum of 6', clear all poles by 2'-0" minimum or tunnel as required.
10. The Contractor shall provide a joint in all sewer mains within 2'-0" of exterior manhole walls.
11. All Horizontal and Vertical Controls are based on Maryland State Datum.

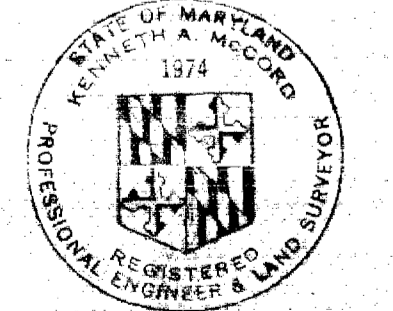
883,500 E
505,750 N



PROFILES
Scale: Horiz. 1" = 100'
Vert. 1" = 10'

QUANTITIES	
ITEM	QUANTITY
6" Water	230'
8" Sewer	235'
FH	1

STAKEOUT IN F.B. # 4442
DIARY IN F.B. # 4442



Kenneth A. Moore

Village of Harper's Choice
Section 4 Area 2
Swansfield
Neighborhood Center Contract #C-307W8

WHITMAN, REQUARDT & ASSOCIATES
ENGINEERS
1304 ST. PAUL ST.
BALTIMORE, MARYLAND

HOWARD COUNTY METROPOLITAN COMMISSION
5/29/69
W. O. Rabut
CHIEF ENGINEER

CONTRACT NO. C-307 W8 S

PLAN & PROFILES
WATER & SEWER MAINS

COLUMBIA
VILLAGE OF HARPER'S CHOICE
ELECTION DISTRICT CLARKSVILLE NO. 5

DRAWING NO. 1 OF 1	SCALE AS SHOWN
	504-476 503-476

WS 307-W8 S/1