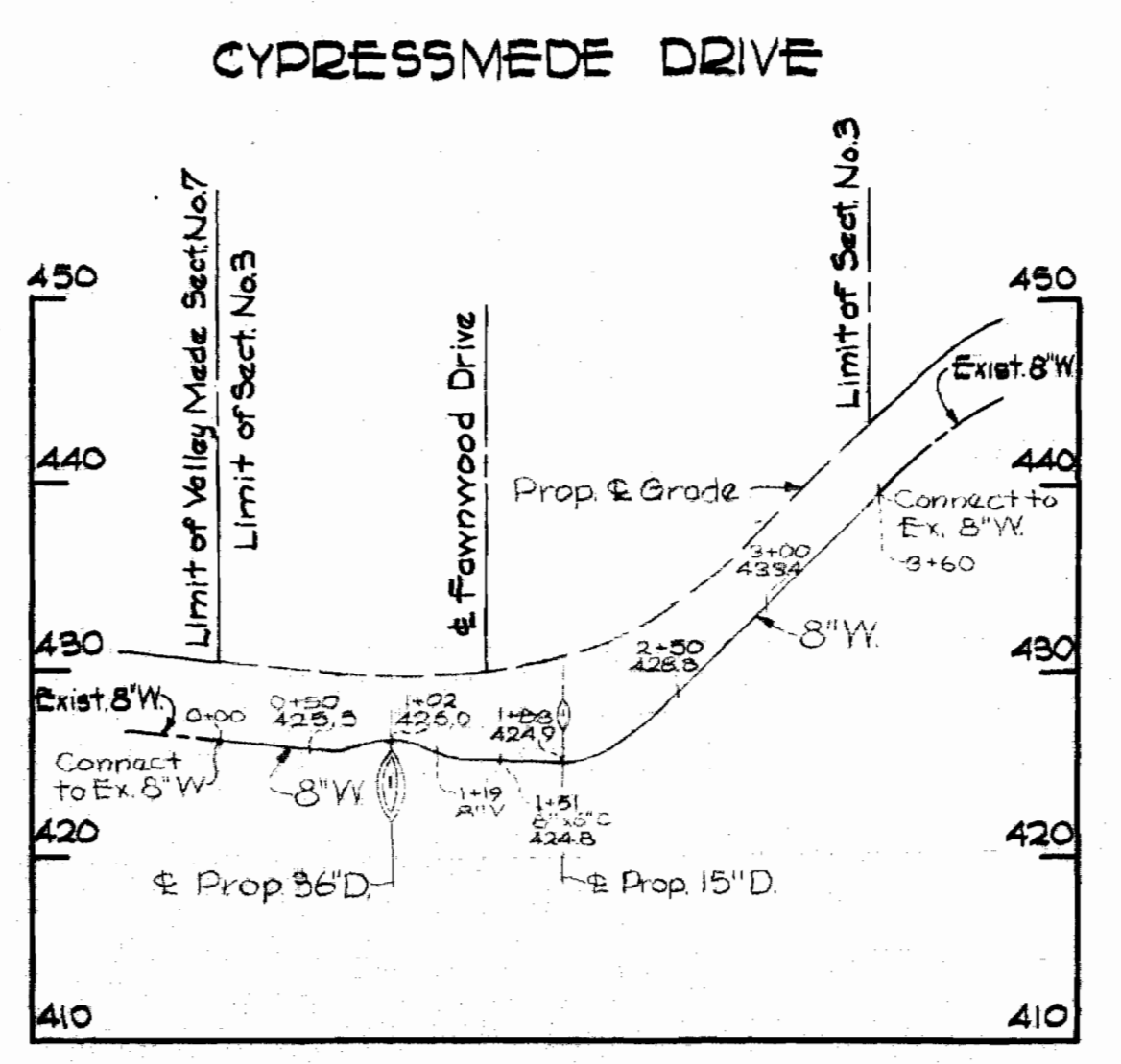
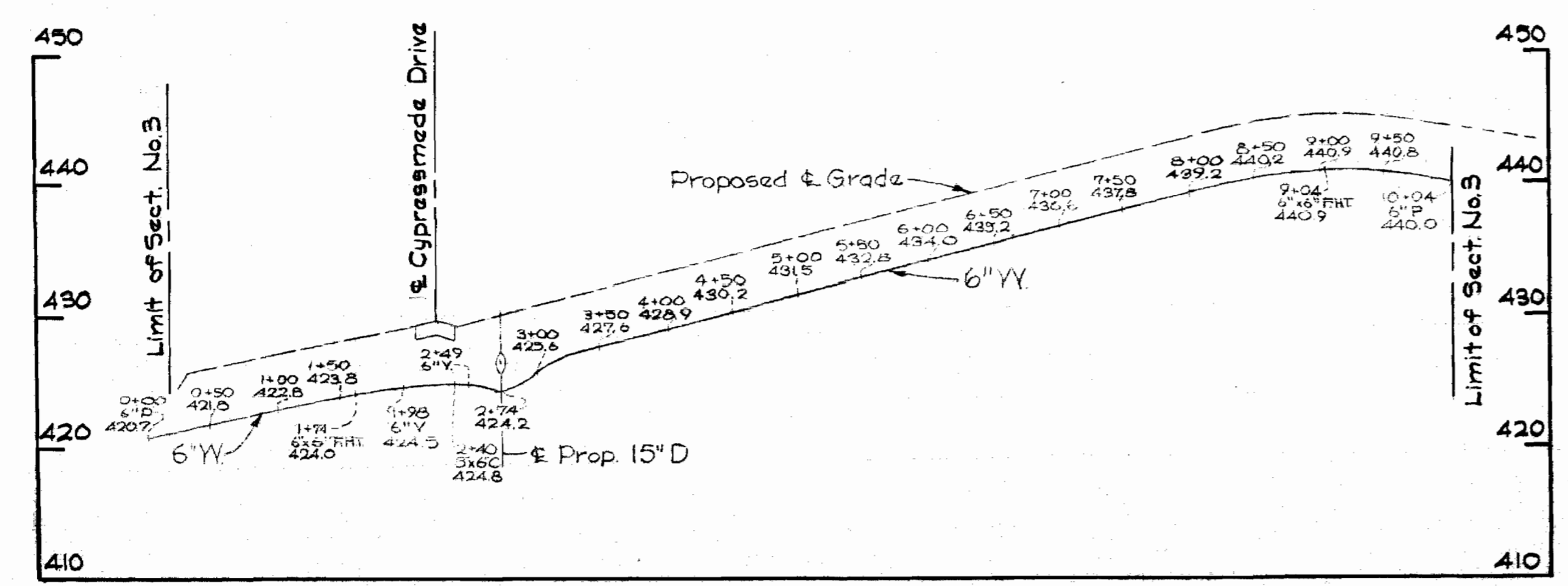
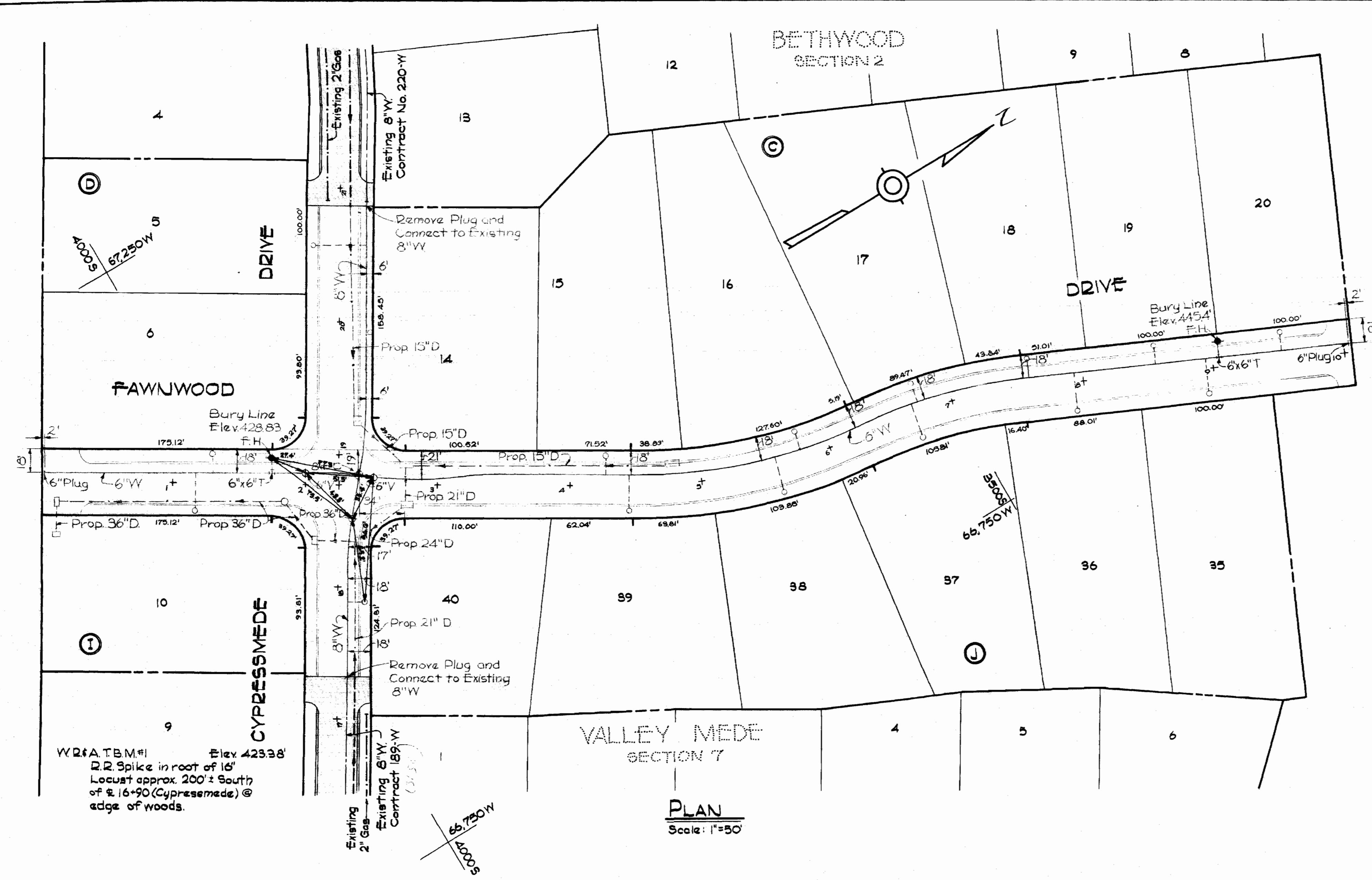


WATER SCHEMATIC
Scale: 1" = 600'

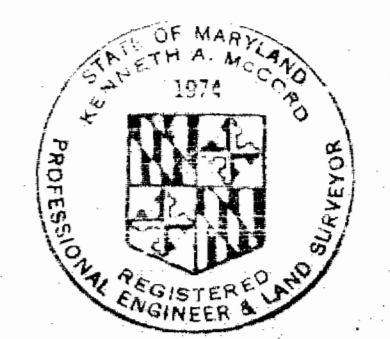
GENERAL NOTES

1. Approximate location of existing mains are shown. The contractor shall take all necessary precautions to protect existing mains and services and maintain uninterrupted supply. Any damage incurred shall be repaired immediately.
2. All pipe elevations shown are invert elevations.
3. The contractor shall locate existing utilities a minimum of two weeks in advance of construction operations in vicinity of utilities.
4. For all standard details see standards bound in Specifications.
5. All water mains to be C.I.P. or D.I.P. and have a minimum of 3 1/2' cover.
6. Block all fittings with concrete, see standard details bound in Specifications.
7. Bury Line elevations on fire hydrants shall be set to elevations shown on drawings.
8. All Fire Hydrants shall be strapped to tee and buttressed with concrete in accordance with Standard Details.
9. Clear all utilities by a minimum of 6', clear all poles by 2'-0" minimum or tunnel as required.
10. All horizontal and vertical controls are based on Howard County Datum, as extended from Baltimore County.

Stakeout in F.B. #4316



QUANTITIES	
ITEM	QUANTITY
8" Water Mains	360 L.F.
6" Water Mains	1000 L.F.
Fire Hydrants	2



Handwritten signature

Bethwood Section 2
Contract # 306-W

WHITMAN, REQUARDT & ASSOCIATES ENGINEERS 1304 ST. PAUL ST. BALTIMORE, MARYLAND	HOWARD COUNTY METROPOLITAN COMMISSION 4-22-69 DATE	CONTRACT NO. 306-W	PLAN AND PROFILE OF WATER MAINS	ELECTION DISTRICT ELLCOTT CITY NO. 2	DRAWING NO. 1 OF 1	SCALE AS SHOWN
---	--	--------------------	------------------------------------	---	--------------------------	----------------------

W. O. 6024-2

July 23, 1969 AS BUILT

WS 306-W/1