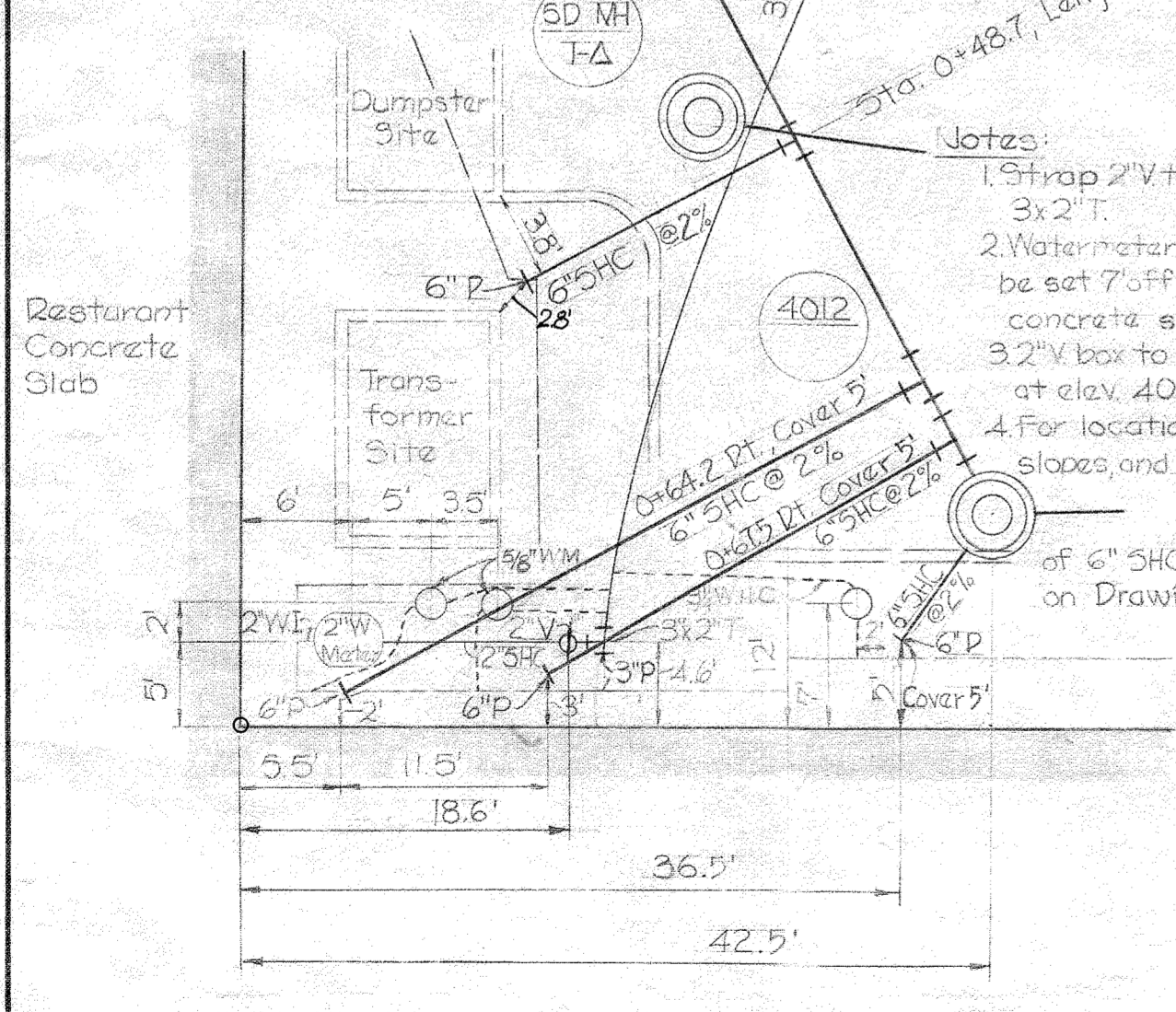


VICINITY MAP
Scale: 1" = 2,000'

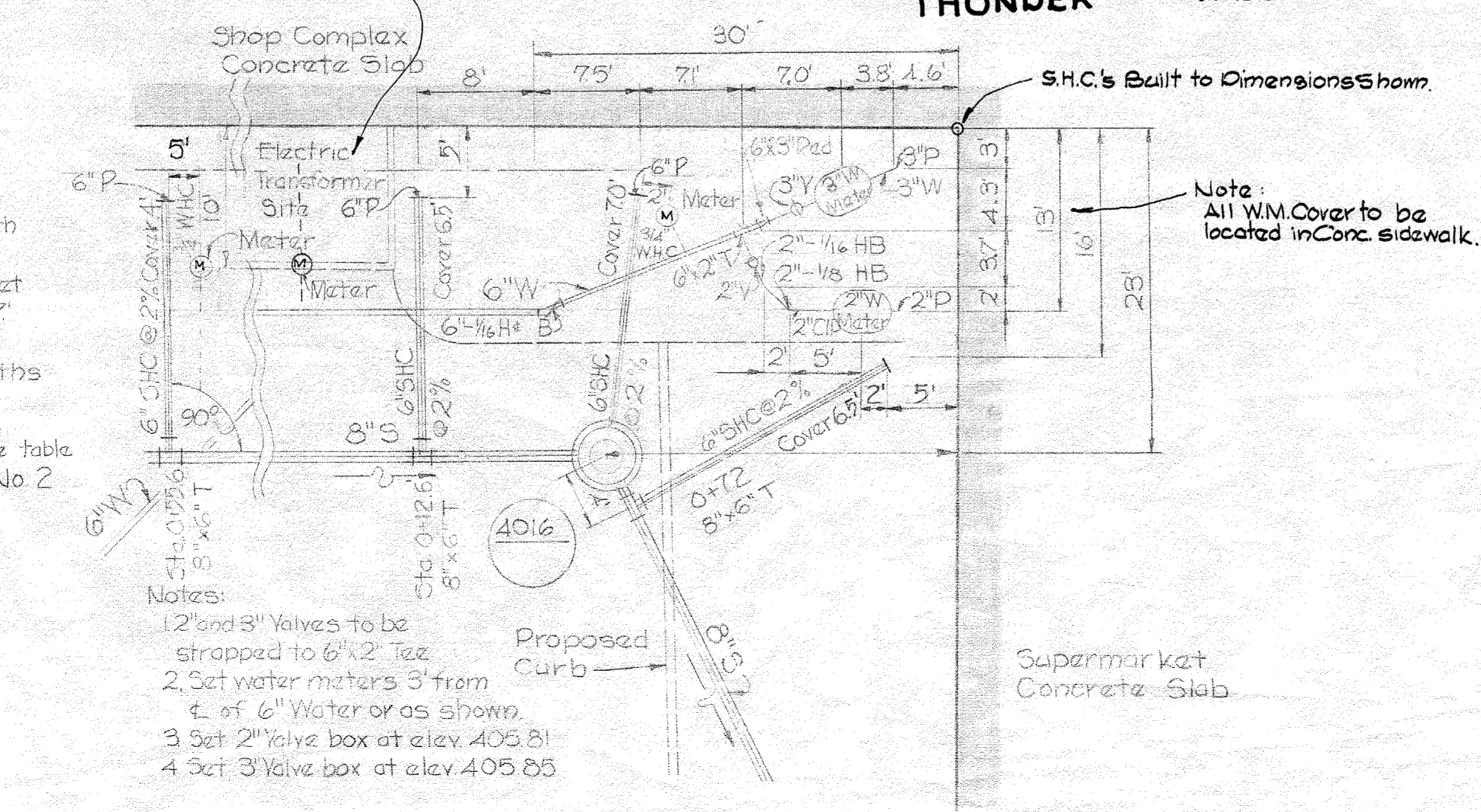
GENERAL NOTES

1. Approximate location of existing utilities are shown. The Contractor shall take all necessary precautions to protect the existing utilities and to maintain uninterrupted supply. Any damage incurred due to Contractor's operations shall be replaced immediately at the Contractor's expense.
2. All pipe elevations shown are invert elevations.
3. The Contractor shall locate existing utilities a minimum of two weeks in advance of construction operations in vicinity of utilities.
4. For all standard details see standard bound in Specifications.
5. All water mains to be C.I.P. or D.I.P. and have a minimum of 3 1/2' cover.
6. Block all fittings with concrete, see standard details bound in Specifications.
7. Bury line elevations on fire hydrants shall be set to elevations shown on drawings.
8. All fire hydrants shall be strapped to tee and buttressed with concrete in accordance with Standard Detail W-4.
9. Clear all utilities by a minimum of 6", clear all poles by 2'-0" minimum or tunnel as required.
10. All manhole rims and valve boxes shall be set 3" above existing ground and Bury Line of Fire Hydrants shall be set 6" above existing ground unless otherwise directed by the Engineer.
11. The Contractor shall provide a joint in all sewer mains within 2'-0" of exterior manhole walls.
12. All manholes shall be 4'-0" inside diameter.

Stakeout & Diary in F.B. #4412



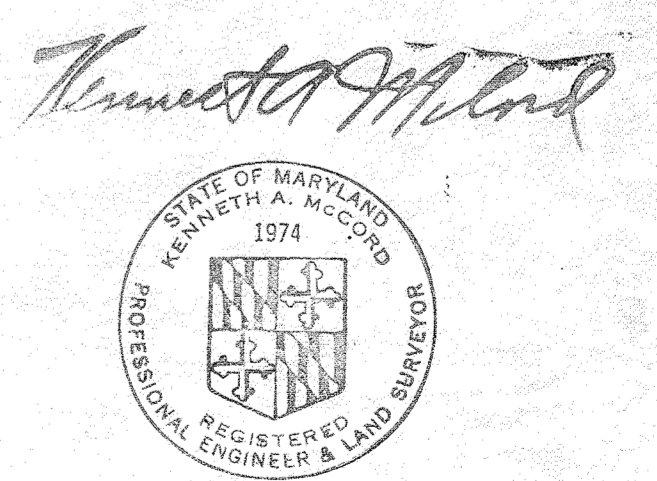
DETAIL OF SERVICES TO SHOPS AND RESTAURANT
Scale: 1" = 10'



DETAILS OF SERVICES TO SHOPS AND SUPERMARKET
Scale: 1" = 10'

MATERIALS TO BE FURNISHED BY THE HOWARD COUNTY DEPT. OF PUBLIC WORKS	
ITEM	QUANTITY
3" Valves	2
6" Valves	3
8" Valves	1
Fire Hydrants	1

QUANTITIES	
ITEM	QUANTITY
3" Water	50 LF
6" Water	250 LF
8" Water	600 LF
8" Sewer	1440 LF



Village of Oakland Mills
Village Center
Contract No. 305-Wf5

WHITMAN, REQUARDT & ASSOCIATES ENGINEERS 1304 ST. PAUL ST. BALTIMORE, MARYLAND	HOWARD COUNTY METROPOLITAN COMMISSION DATE: 4-25-69 W. O. Fallick CHIEF ENGINEER	CONTRACT NO. C-305-Wf5	PLAN OF WATER & SEWER MAINS	COLUMBIA VILLAGE OF OAKLAND MILLS ELECTION DISTRICT GUILFORD NO. 6	DRAWING NO. 1 OF 3	SCALE 1" = 50'
--	--	-------------------------------	--	---	---------------------------	-----------------------

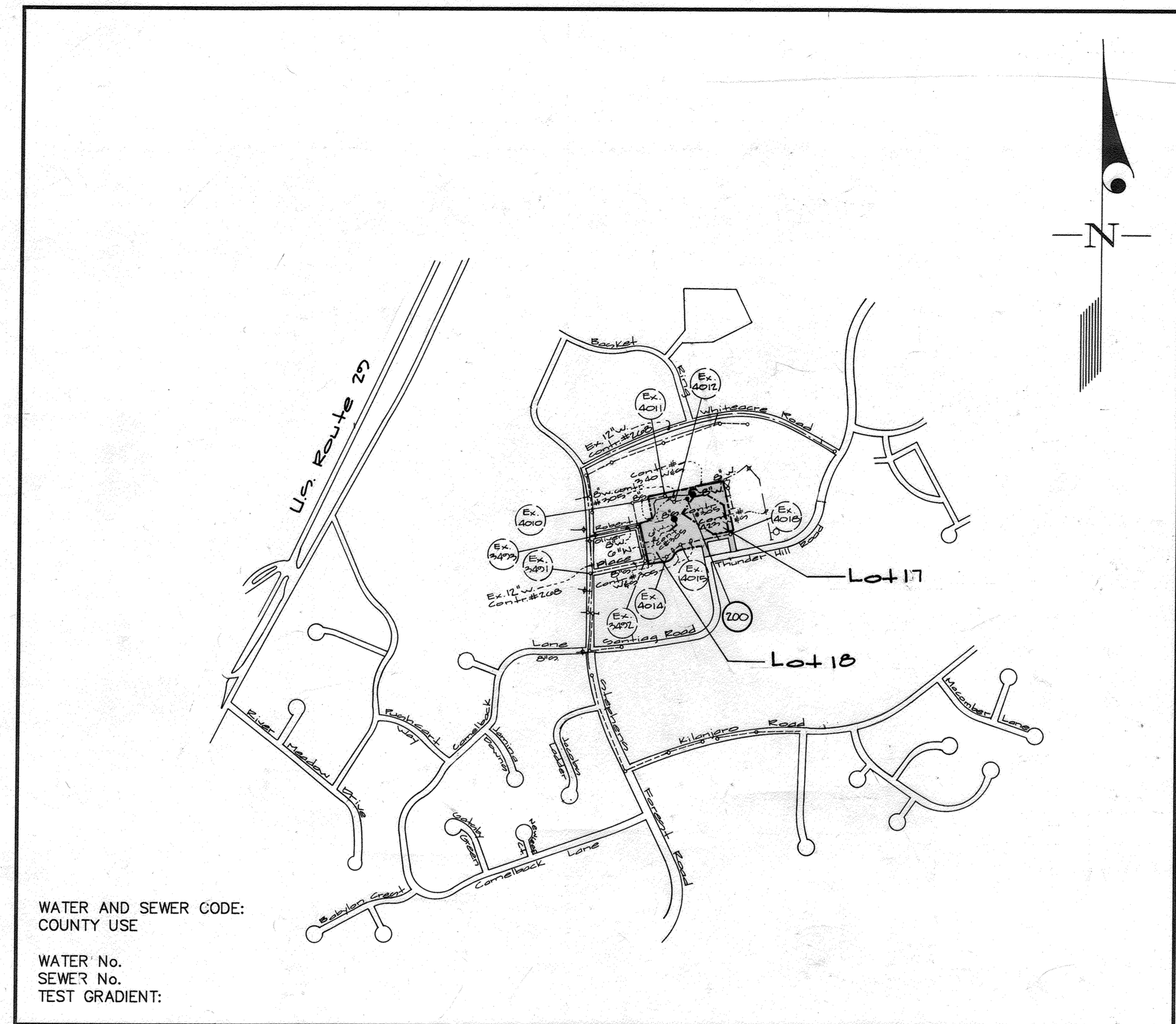
W. O. 6023-2

BUILT Oct. 22, 1969

WS 305 Wf5/1

ITEMS	QUANTITIES		AS-BUILT	
	ESTIMATED	QUANTITIES	TYPE	MANUFACTURER/SUPPLIER
6" Water	112 L.F.	EST. 112	DIP 52	GRIFFIN
6" Water	231 L.F.	EST. 231	"	"
6" Sewer	101 L.F.			
4" Sewer	17 L.F.			
6" 1/2 Band	3		45° M.S.	TYLER
6" x 6" T.E.V.	2			
6" x 6" F.H.T.	1		C.500	KENNEDY
6" Valve	2	2	R/S KENNEDY	MYC-509
8" Inserting Valve	2			
Fire Hydrant	2	2	KENNEDY	M/C
Manhole	1			
4" Water	25 L.F.	EST. 25	M&S	M/C
6" x 6" T.E.V.	1		M&S	"
6" x 6" F.H.T.	1	1	M&S	"
6" Inserting Valve	1		KENNEDY	"

TYPE OF BUILDING	Commercial
NUMBER OF UNITS	N/A
NUMBER OF S.H.C.'s	1
NUMBER OF W.H.C.'s	2
DRAINAGE AREA	Little Bluent
TREATMENT PLANT	Little Bluent Water Reclamation Plant



- GENERAL NOTES**
- PART I**
- Approximate location of existing mains are shown. The contractor shall take all necessary precautions to protect existing mains and services and maintain uninterrupted supply. Any damage incurred shall be repaired immediately to the satisfaction of the Engineer at the Contractor's expense.
 - All horizontal controls are based on Maryland State Coordinates [North American Datum 1927 (NAD '27)].
 - All vertical controls are based on U.S.G.S. data.
 - All pipe elevations shown are invert elevations.
 - Clear all utilities by a minimum of 6". Clear all poles by 2'-0" minimum or tunnel as required. The owner has contacted the utility companies and has made arrangements for bracing of poles as shown on the drawings. In the event the contractor's work requires the bracing of additional poles, any cost incurred by the owner for bracing of additional poles or damages shall be deducted from money owed the contractor. The contractor shall coordinate with the utility companies to schedule the bracing of the poles.
 - For details not shown on the drawings, and for materials and construction methods use Howard County Design Manual, Volume IV, Standard Specifications and Detail for Construction (Latest Edition). The contractor shall have a copy of Volume IV on the job.
 - Where test pits have been made on existing utilities, they are noted by the symbol at the location of the test pit. A note or notes containing the results of the test pit or pits is included on the drawings. Existing utilities in the vicinity of the proposed work for which test pits have not been dug shall be located by the contractor two weeks in advance of construction operations at his own expense.
 - Contractor shall notify the following utility companies or agencies at least (5) working days before starting work shown on these plans:
 - State Highway Administration 531-5533
 - BGE Contractor Services 850-4620
 - BGE Under Ground Damage Control 787-9068
 - Miss Utility 1-800-257-7777
 - Colonial Pipeline Co. 795-1390
 - Howard County Department of Public Works Bureau of Utilities 313-4900
 - Trees and shrubs are to be protected from damage to maximum extent. Trees and shrubs located within the construction strip are not to be removed or damaged by the contractor.
 - Contractor shall remove trees, stumps and roots along line of excavation. Payment for such removal shall be included in the unit price bid for construction of the main.
 - The contractor shall notify the Bureau of Highways, Howard County, at (410) 313-2450 at least five (5) working days before any open cut of any County road or boring/jacking operation on County roads for laying water/sewer mains or house connections. The approval of these drawings will constitute compliance with DPW requirement per Section 18.114(a) of the Howard County Code.

Notes:

- The approved and signed original sheets 1A, 2A + 3A of Contract C-305 W+S-A are part of Contract C-305 W+S approved and signed on 4/25/09 by Chief, Bureau of Engineering.
- For realignment of Water main and Water + Sewer house connections and fire hydrants locations, refer to these plans: 1A, 2A + 3A, approved and signed by Chief P.E.D. on

WATER AND SEWER CODE:
COUNTY USE

WATER No.
SEWER No.
TEST GRADIENT:

VICINITY MAP
SCALE: 1"=600'

CONTRACT No. C-305 W+S-A
Village of Oakland Mills
Village Center
Section 2 Area 1
Lots 17 & 18
HOWARD COUNTY, MARYLAND
DEPARTMENT OF PUBLIC WORKS

- PART II - WATER**
- All water mains to be D.I.P. Class 52 unless otherwise noted.
 - Tops of all water mains to have a minimum of 3'-1/2' cover unless otherwise noted.
 - Valves adjacent to tees shall be strapped to tees.
 - All fittings shall be buttressed or anchored with concrete in accordance with the Standard Details unless otherwise provided for on the drawings.
 - Fire hydrants shall be set to the bury line elevations shown on the drawings. All fire hydrants shall be restrained and buttressed with concrete in accordance with the Standard Details. Soil around the fire hydrant shall be compacted in accordance with Section 1000 and 1005 of the Standard Specifications.
 - The contractor shall not operate any water main valves on the existing water system.
 - All water house connections shall be for inside meter setting unless otherwise noted on plans or in specifications.
 - For sprinkler system for all townhomes or multi-family dwelling units should have a minimum of 1' connection with a 3/4" meter.
- PART III - SEWER**
- All sewer mains shall be DIP and P.V.C. unless otherwise noted.
 - All manholes shall be 4' - 0" inside diameter unless otherwise noted.
 - Force mains shall be D.I.P. only.
 - Manholes shown with 12" and 16" walls are for brick manholes only. Manholes designated W.T. in plan and profile shall have watertight frame and covers. Standard Detail 05.52. Where watertight frame and cover is used, set top of frame 1'-6" above finished grade unless otherwise noted on drawings.
 - House(s) with the symbol "C.N.S." indicates that cellar cannot be served.

Sediment Control Measures will be implemented in accordance with Section 219 of the Specifications & with ; Drawings SDF-75-04620-10 for Sediment & Erosion Control.

REVIEWED FOR HOWARD SOIL CONSERVATION DISTRICT AND MEETS TECHNICAL REQUIREMENT.

Clay Simmons 2/12/19
SIGNATURE DATE

U.S.D.A. NATURAL RESOURCES CONSERVATION SERVICE

THIS DEVELOPMENT PLAN IS APPROVED FOR SOIL EROSION AND SEDIMENT CONTROL BY THE HOWARD SOIL CONSERVATION DISTRICT.

APPROVED: *John R. Dutton* 2/12/19
HOWARD S.C.D. DATE

DEPARTMENT OF PUBLIC WORKS
HOWARD COUNTY, MARYLAND

Robert Duggins 2-11-19
CHIEF, BUREAU OF UTILITIES DATE

DEPARTMENT OF PLANNING AND ZONING
HOWARD COUNTY, MARYLAND

John D. ... 2/15/19
CHIEF, DEVELOPMENT ENGINEERING DIVISION DATE

GLW GUTSCHICK LITTLE & WEBER, P.A.

CIVIL ENGINEERS, SURVEYORS, PLANNERS, LANDSCAPE ARCHITECTS
3909 NATIONAL DRIVE - SUITE 250 - BURTONSVILLE OFFICE PARK - BURTONSVILLE, MARYLAND 20866

TEL: (410) 880-1820 ~ FAX: (301) 421-4186

DES: wsl				
DRN: wsl				
CHK:				
DATE: 2/12/19	BY: KCI	NO: 1	REVISION: ASBUILT DATA ADDED TO PLAN	DATE: 12/05/02

Title sheet

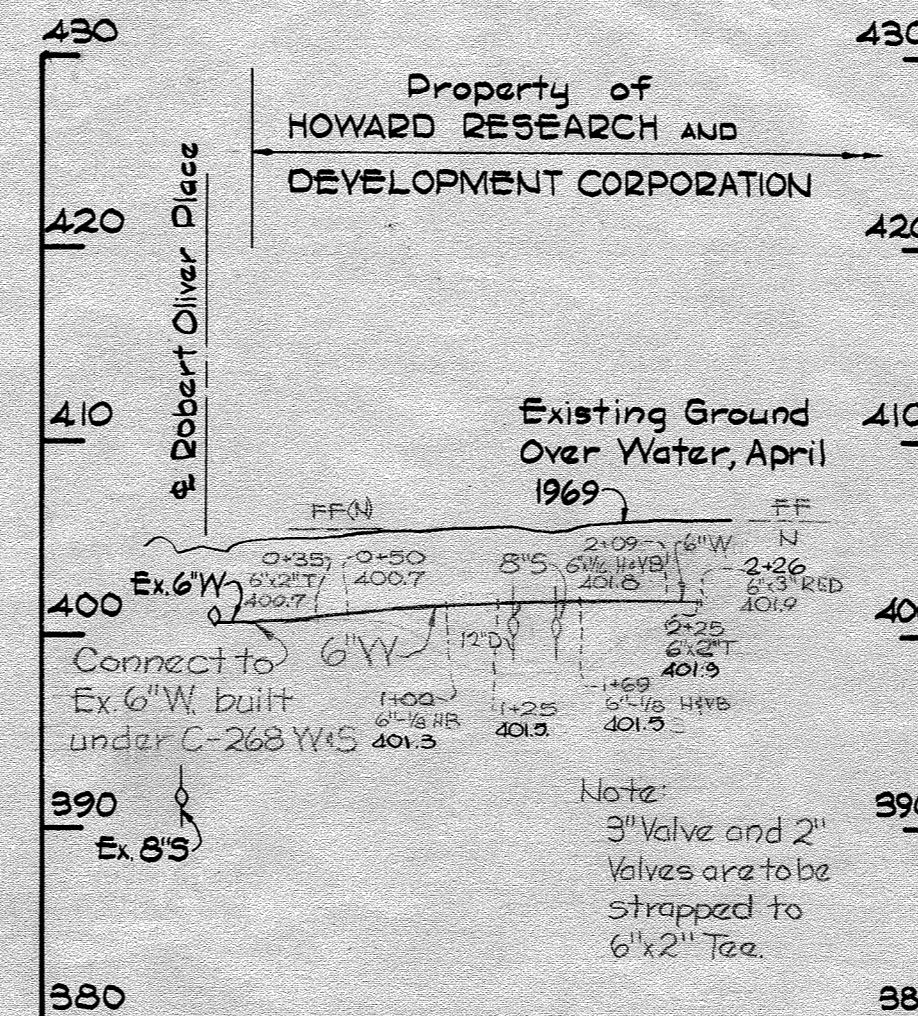
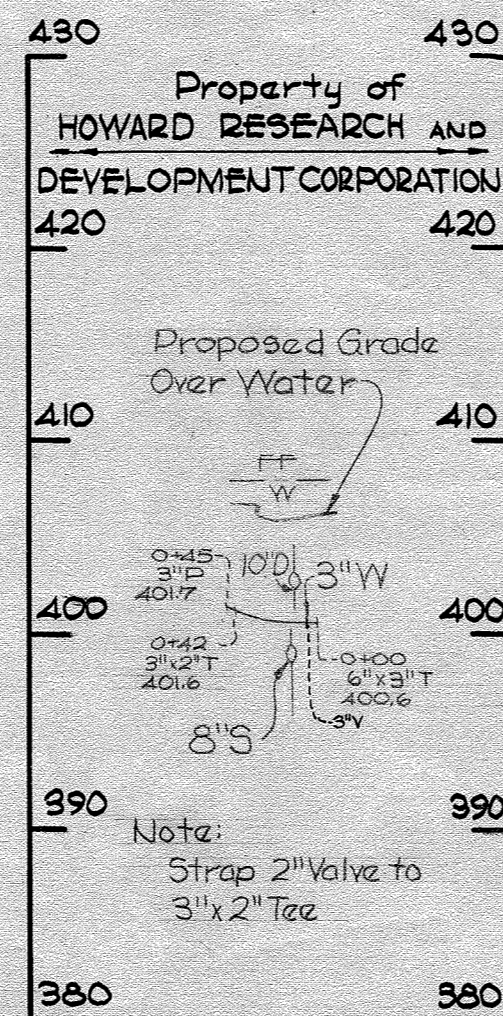
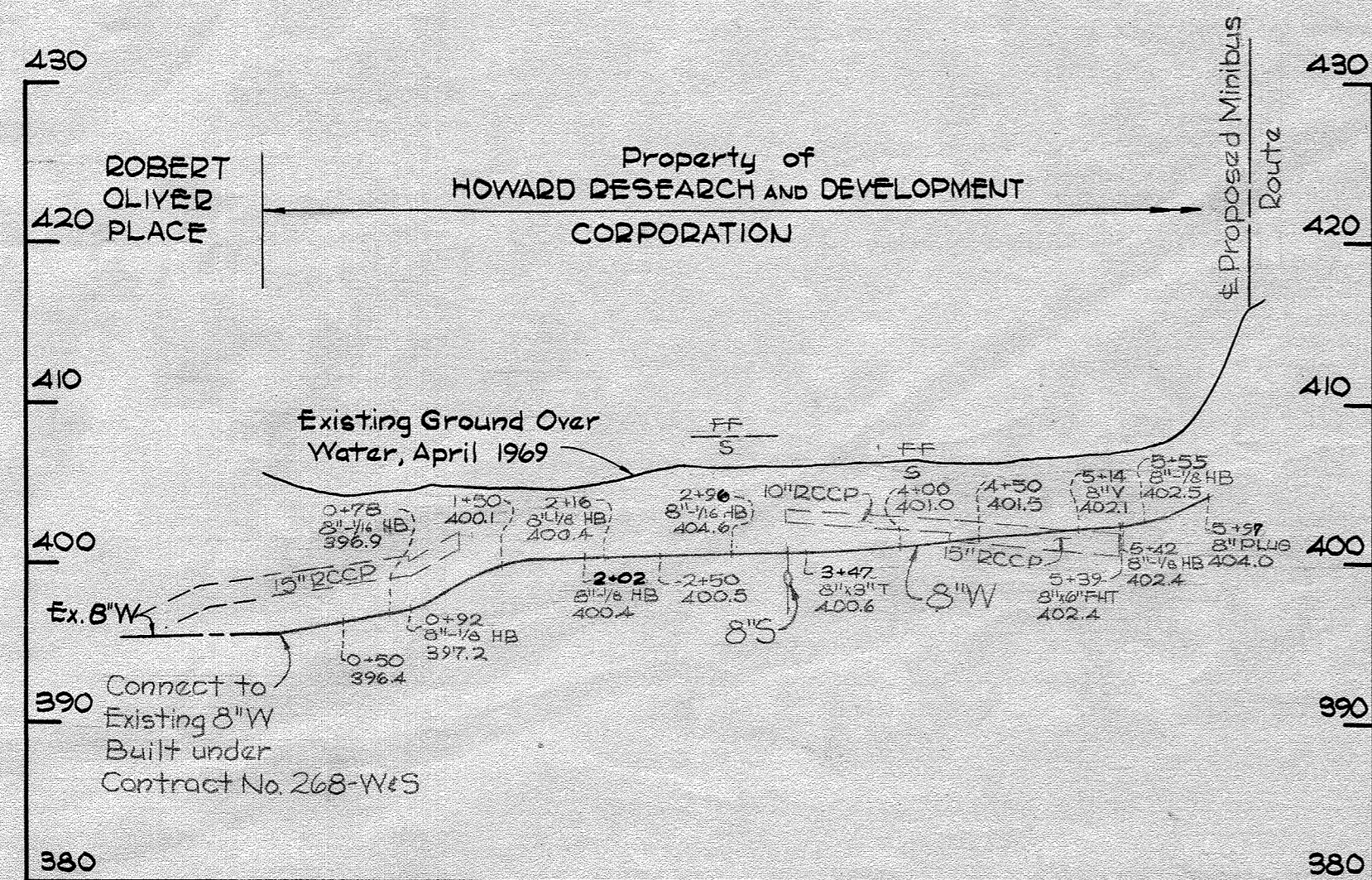
600' SCALE MAP NO. 200 BLOCK NO. 2

GLW FILE No. 97-071

Columbia
Village of Oakland Mills
Village Center
Section 2 Area 1
Lots 17 & 18
Guilford Election District No. 0
Contract No. C-305 W+S-A

SCALE AS SHOWN

SHEET 1A OF 22

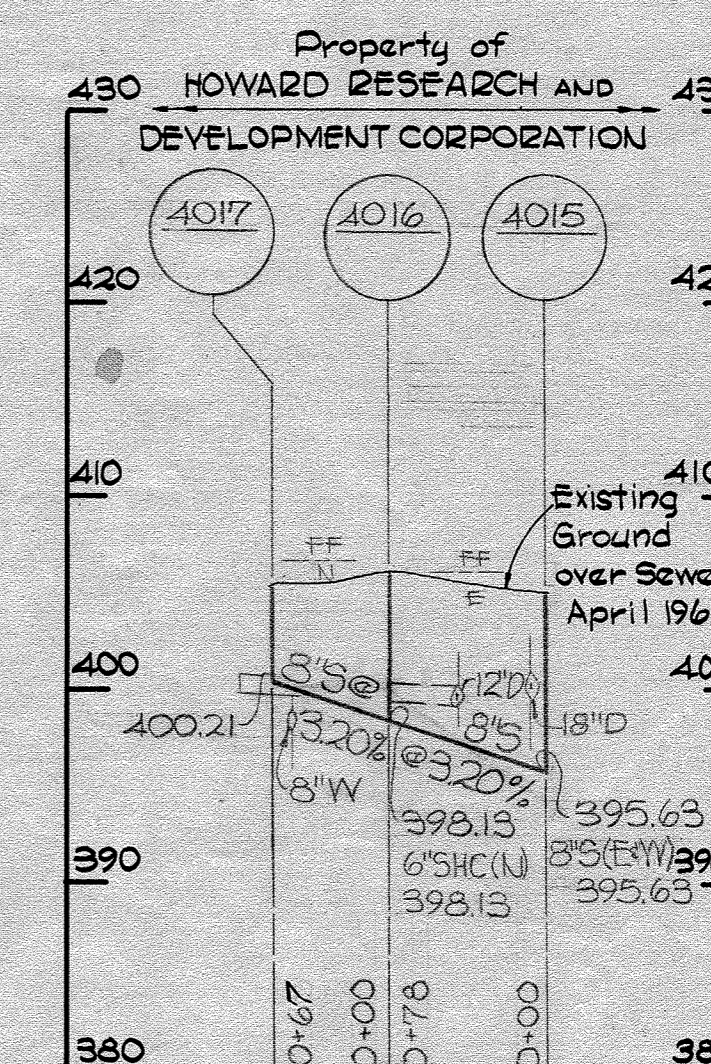
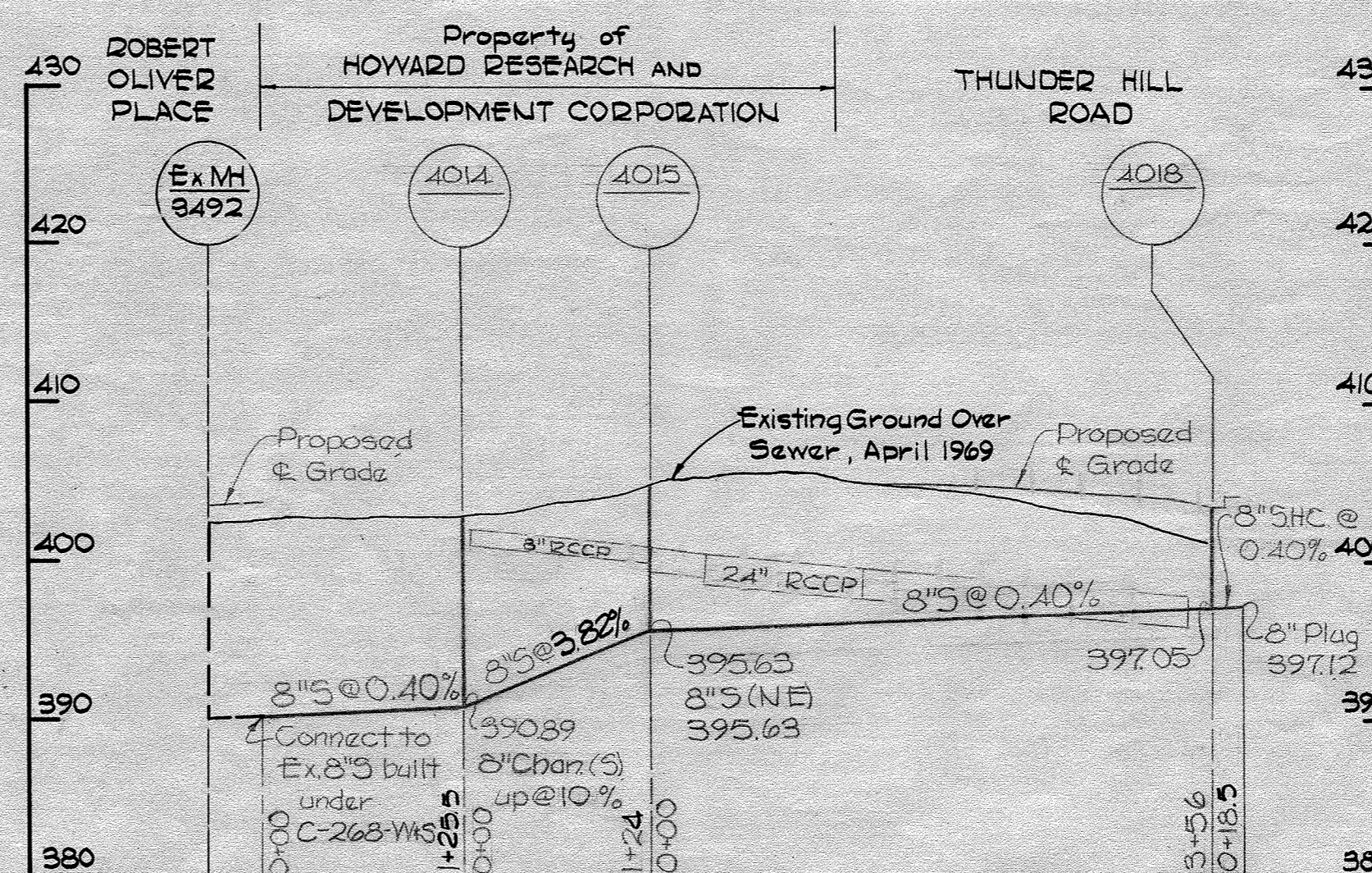
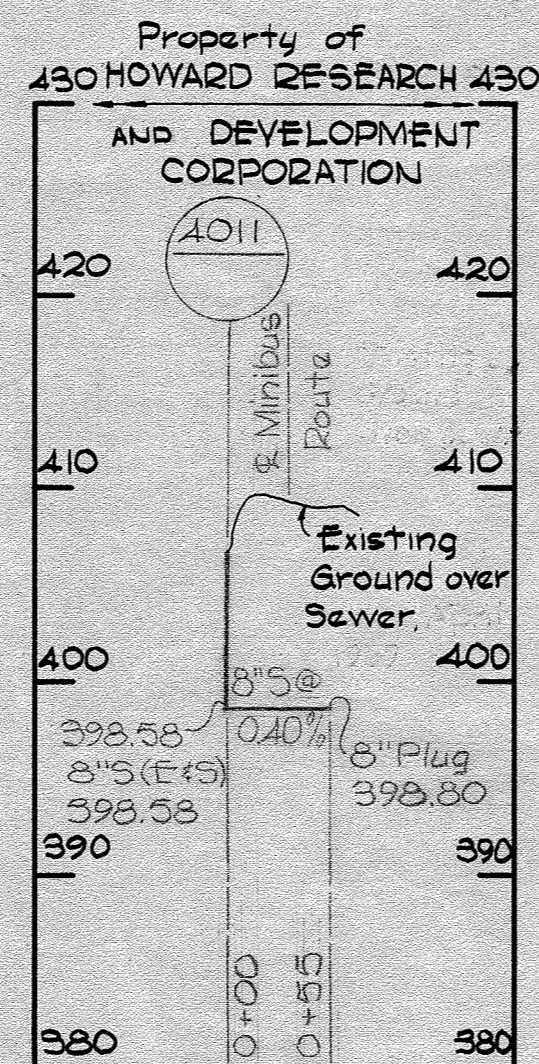
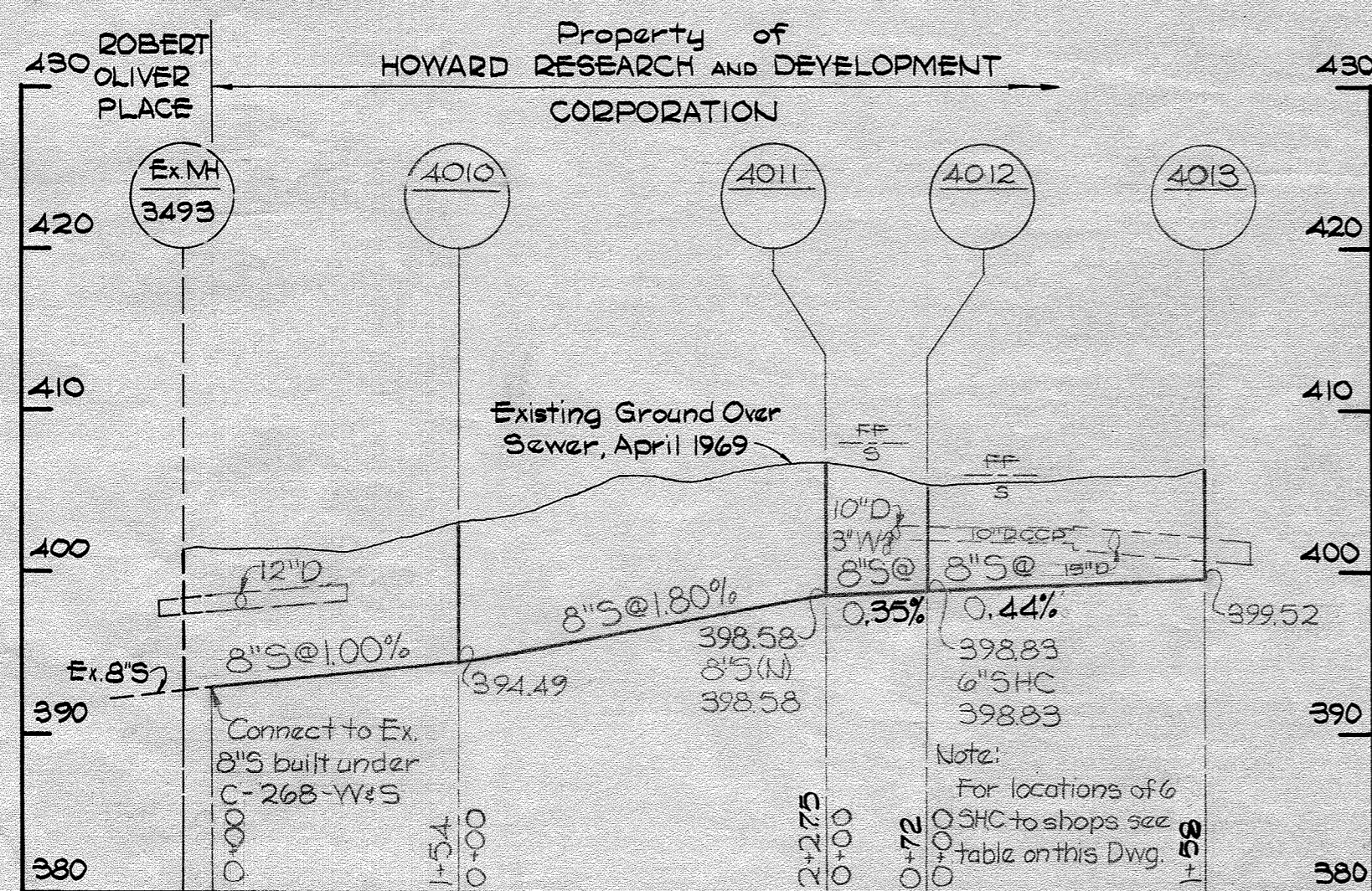


SEWER HOUSE CONNECTIONS
Manhole 4012 to 4013
From 8'S

Station	Length of 6" SHC	Slope of 6" SHC	Cover
0+67.5	37'	2%	5'
0+64.2	29'	2%	5'
@NH 4012	9' MH	2%	5'
0+22.5	7'	2%	5'
0+58.4	7'	2%	6'
0+68.9	7'	2%	6'
0+82.0	7'	2%	5'
1+00.9	7'	2%	5'
1+14.1	7'	2%	5'
1+20.0	7'	2%	5'

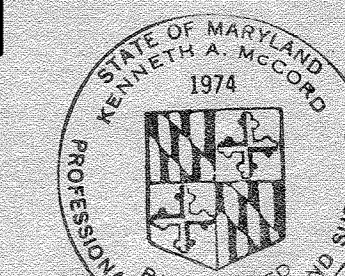
Note:
Revised SHC Locations by Rouse Co. (Mr. Rhinert)
6-19-69

WATER MAIN PROFILES



SEWER MAIN PROFILES

NOTE:
ALL SEWER MAINS ACP CLASS 2400



Kenneth A. McLeod

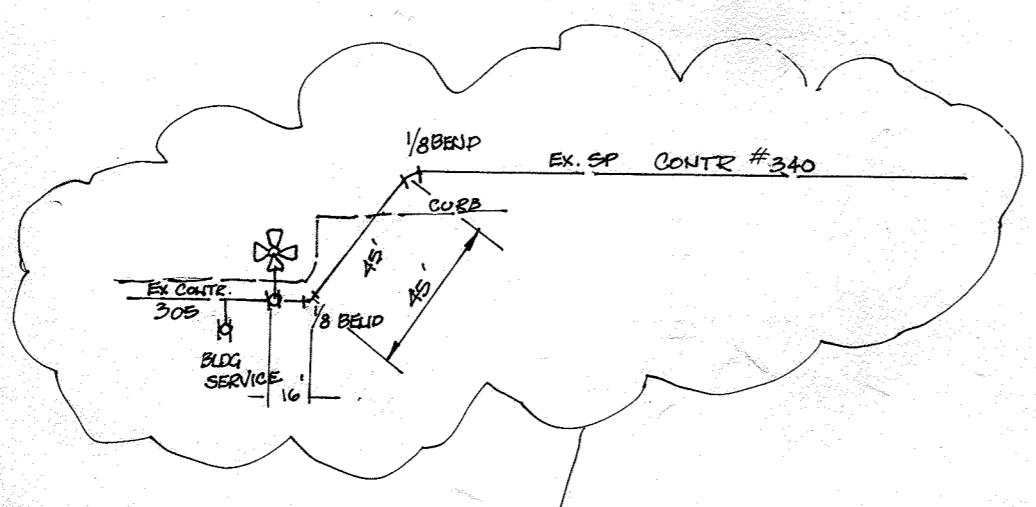
Village of Oakland Mills
Village Center
Contract No. 305-W&S

WHITMAN, REQUARDT & ASSOCIATES ENGINEERS 1304 ST. PAUL ST. BALTIMORE, MARYLAND	HOWARD COUNTY METROPOLITAN COMMISSION DATE 4-25-69 <i>W O Pillemer</i> CHIEF ENGINEER	CONTRACT NO. C-305 W&S	PROFILES OF WATER & SEWER MAINS	COLUMBIA VILLAGE OF OAKLAND MILLS ELECTION DISTRICT GUILFORD NO.6	DRAWING NO. 2 OF 3	SCALE H: 1" = 100' V: 1" = 10'
---	--	------------------------	------------------------------------	---	--------------------------	--------------------------------------

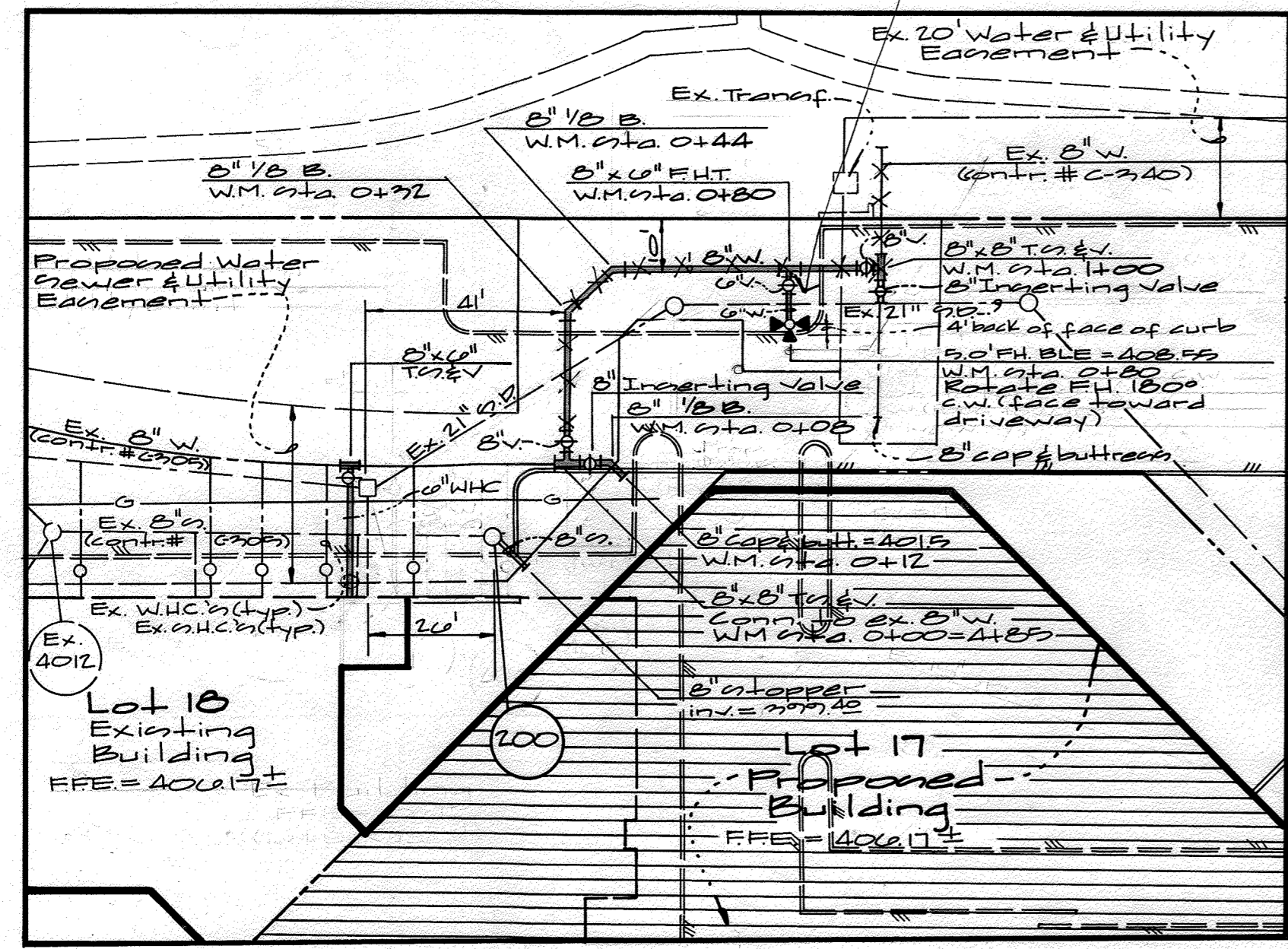
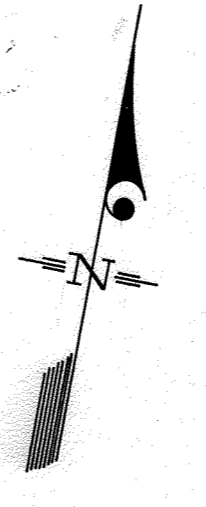
W. O. 6023-2

AS BUILT Oct. 22, 1969 FB 4371

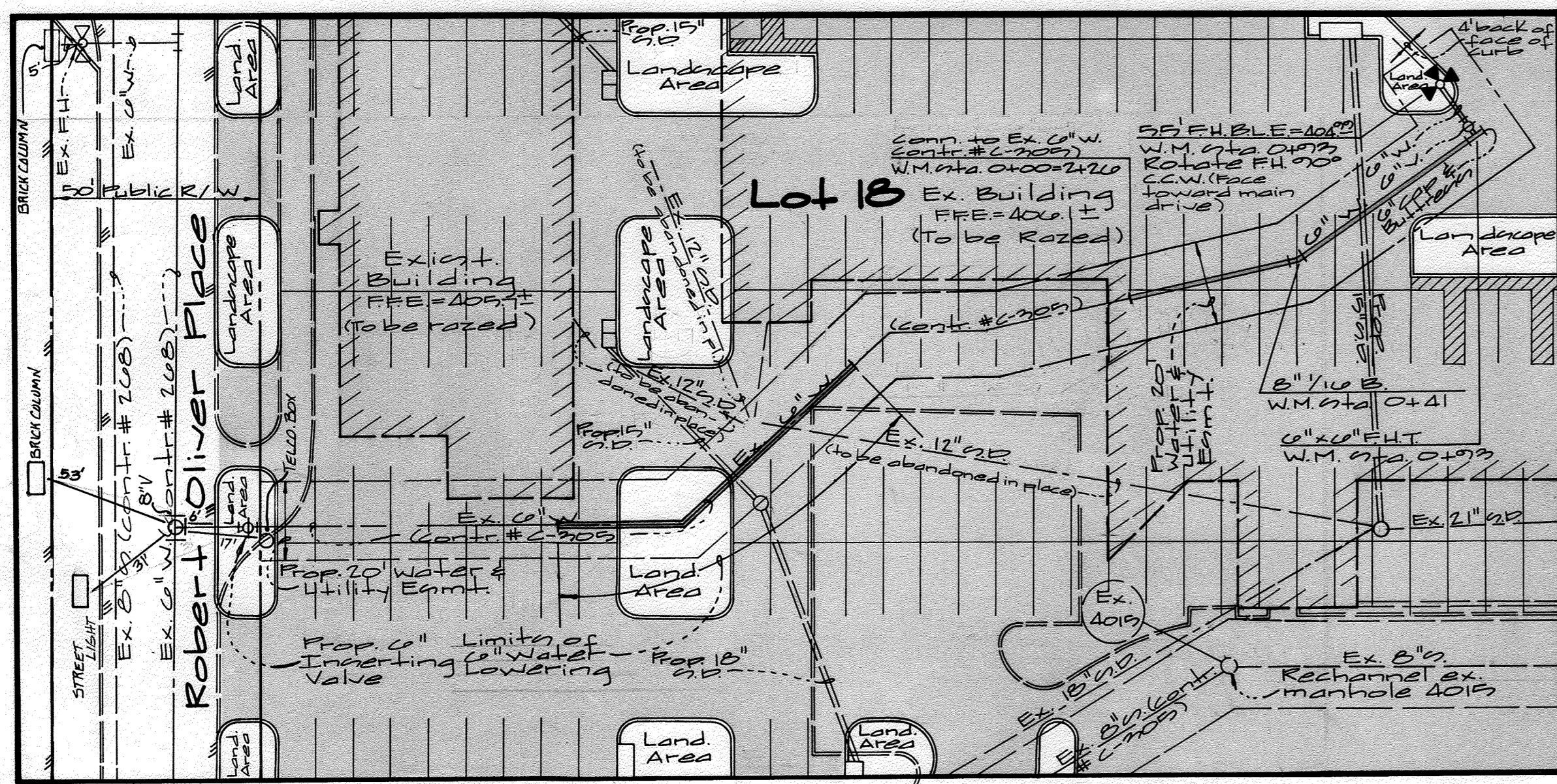
WS 305 wts/2



- Legend**
- (T.B.A.P) To be abandoned in place
 - Existing sewer
 - Existing water
 - Existing storm drain
 - - - Proposed sewer
 - - - Proposed water
 - - - Proposed storm drain
 - - - Existing curb line
 - - - Existing paving
 - - - Proposed curb line
 - - - Proposed paving



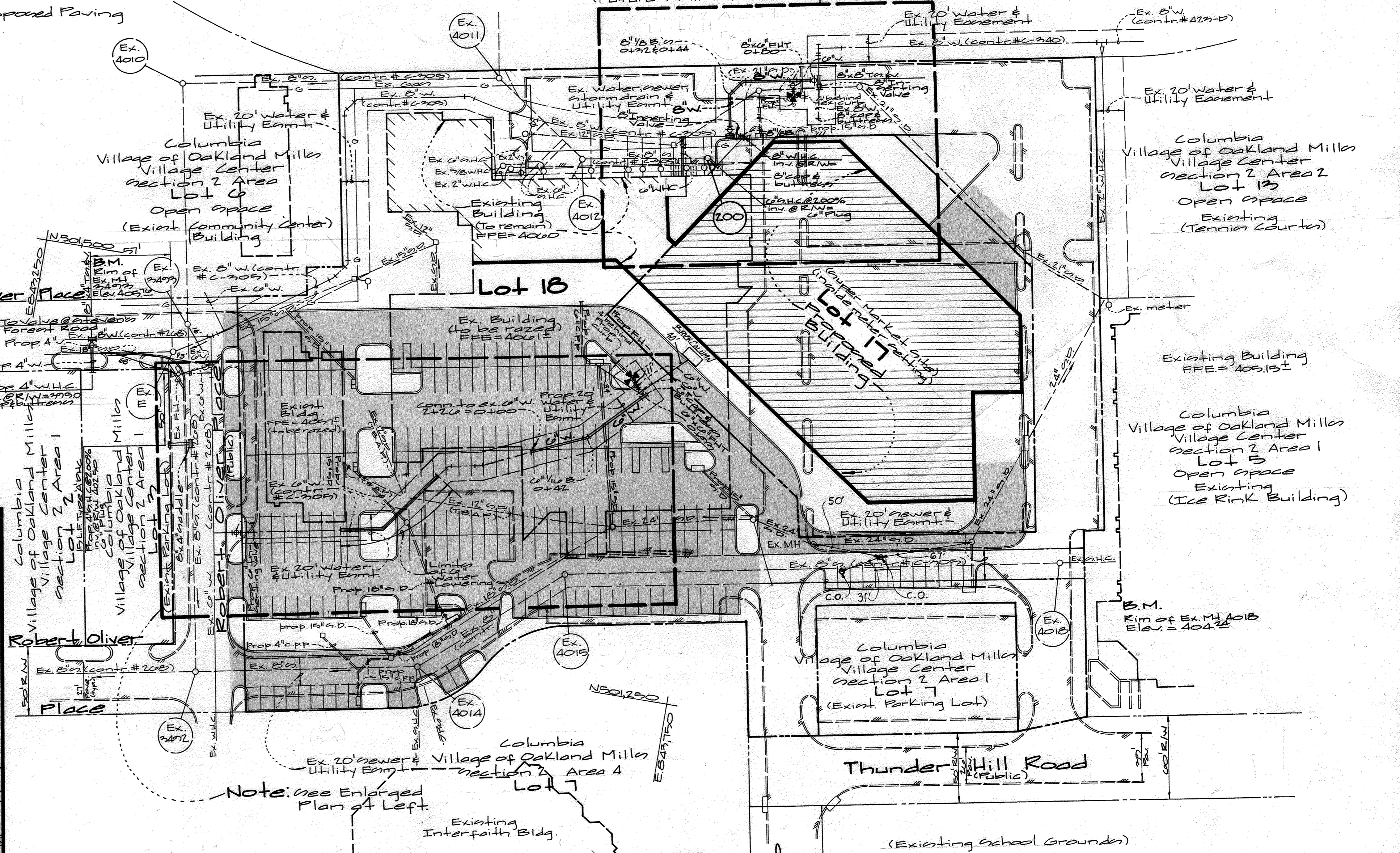
Partial Plan Detail
(Back Area)
1" = 30'



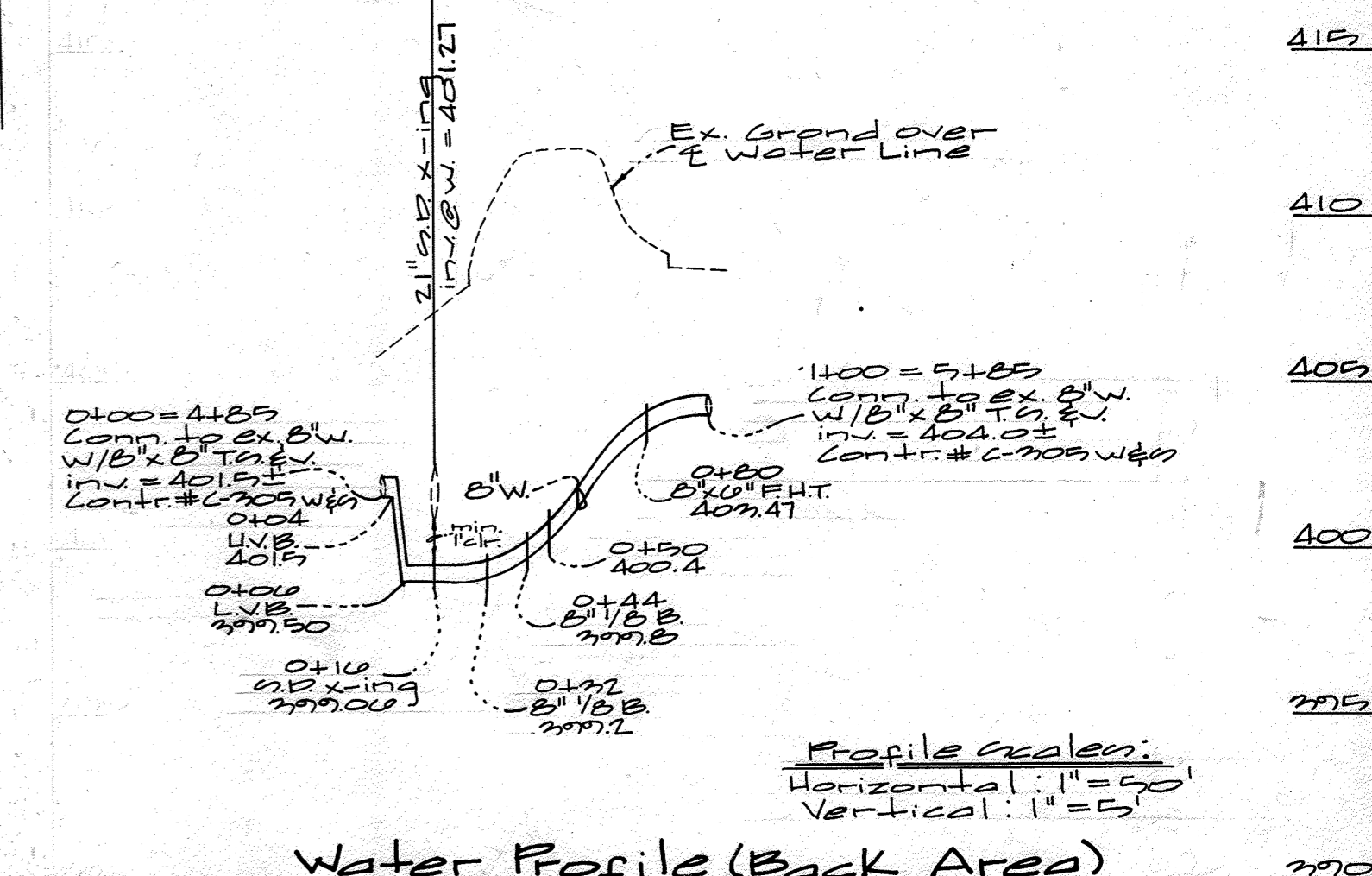
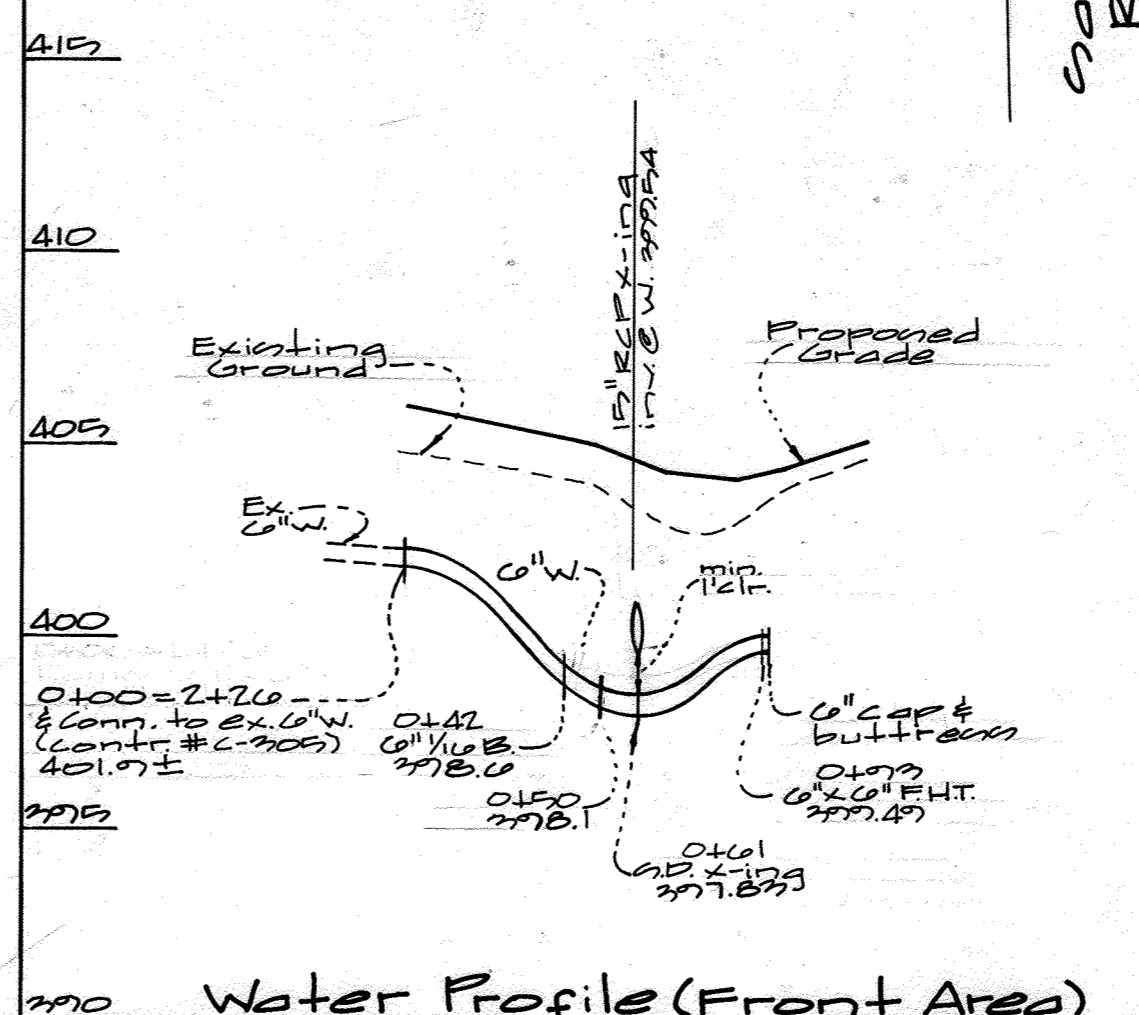
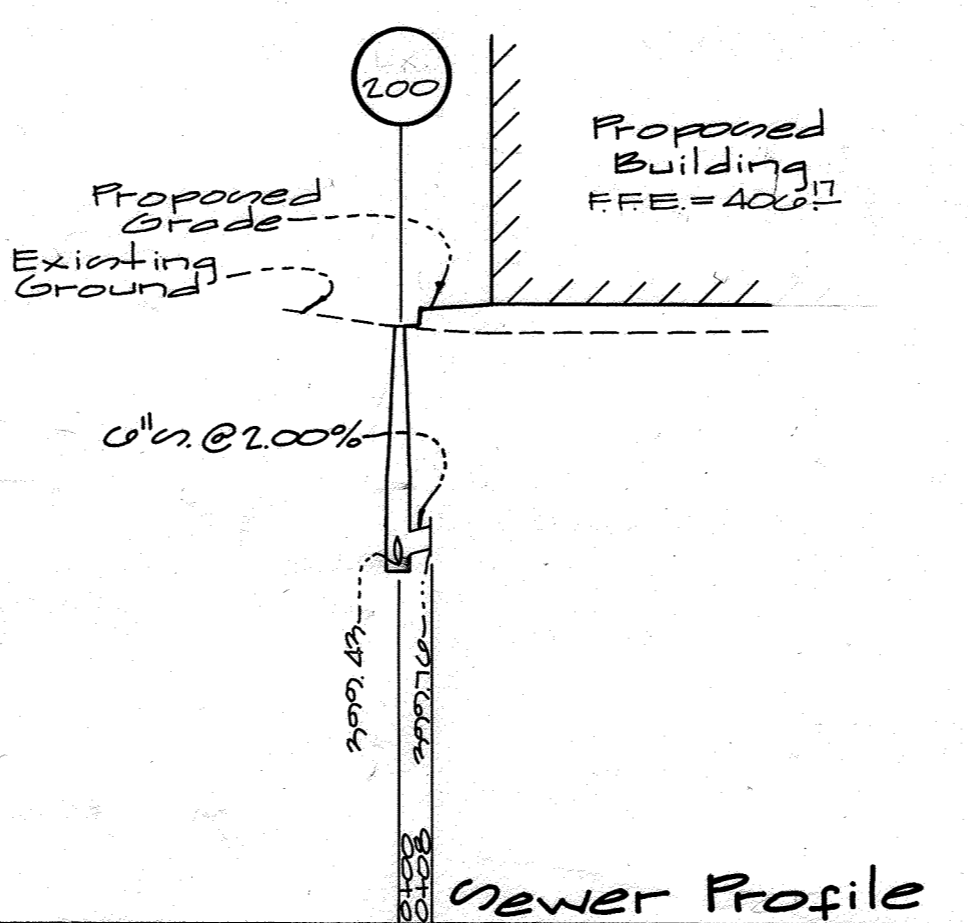
Partial Plan Detail
(Front Area)
1" = 30'

Notes:

1. The approved and signed original sheets 1A, 2A & 3A of Contract C-205 W&P-A are part of Contract C-205 W&P approved and signed on by Chief, Bureau of Engineering.
2. For realignment of water main and water and sewer house connections and fire hydrant locations, refer to these plans: 1A, 2A and 3A, approved and signed by Chief B.E.P.
3. For existing water and sewer main & house connections to be removed see sheet 3A of 2.
4. All existing fire hydrants, water meters and valves to be removed shall be returned to the Bureau of Utilities. See sheet 3A of 2.
5. Contractor is responsible for replacing existing paving removed during construction of proposed water & sewer mains. See Howard County Ord. G.401.
6. Contractor shall sequence the construction of this contract to avoid any possible conflicts with sediment control measures in effect under CDP 92-08 & CP 92-18.



Plan
Scale: 1" = 50'



Department of Public Works
Howard County, Maryland

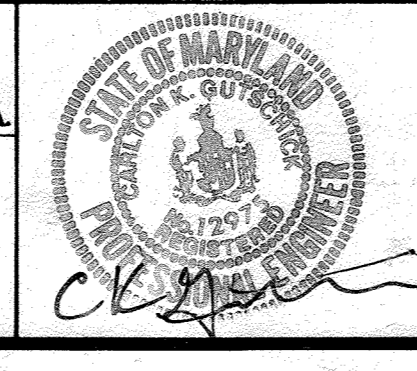
Robert B. ... 2/1/98
Chief, Bureau of Utilities Date

Department of Planning & Zoning
Howard County, Maryland

... 2/13/98
Chief, Development Engineering Division Date

G&W GUTSCHICK LITTLE & WEBER, P.A.
ENGINEERS, PLANNERS, SURVEYORS

3909 NATIONAL DRIVE SUITE 250 BURTONSVILLE OFFICE PARK
BURTONSVILLE, MD. 20886
(301) 421-4224



DES:	W&J			
DRN:	W&J			
CHK:	WRA	2	A5 BUILT Data added to Plan	5/06/91
DATE:	KCI	1	ASBUILT DATA ADDED TO PLAN	12/05/90
BY:	NO.		REVISION	DATE

Water & Sewer Plan & Profile

600' SCALE MAP NO. 200 BLOCK NO. 2

Columbia Village of Oakland Mills
Village Center
Section 2 Area 1
Lots 17 & 18
Guilford Election District No. 6
Contract No. C-205 W&P-A

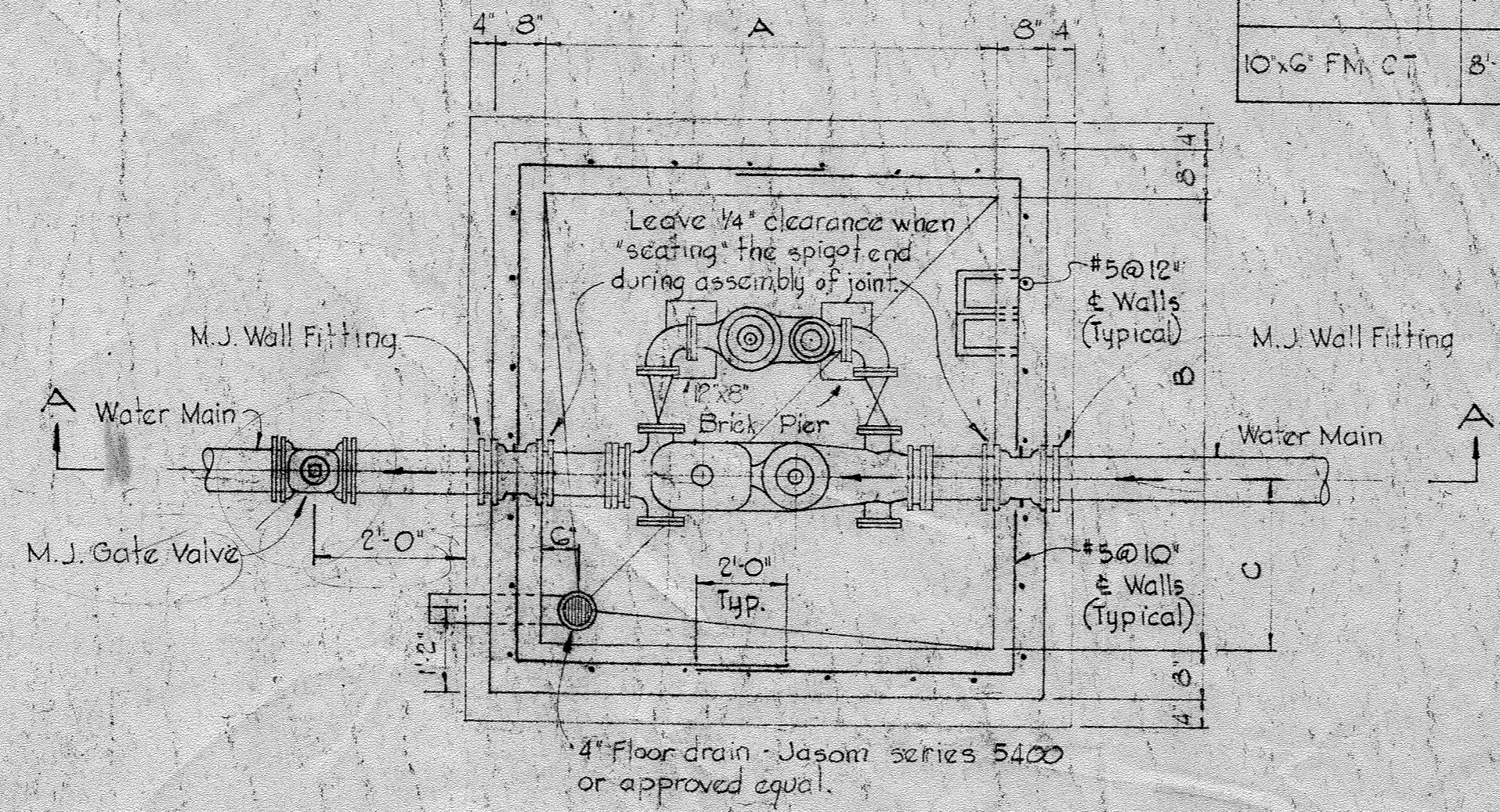
SCALE AS SHOWN

SHEET 2A OF 3

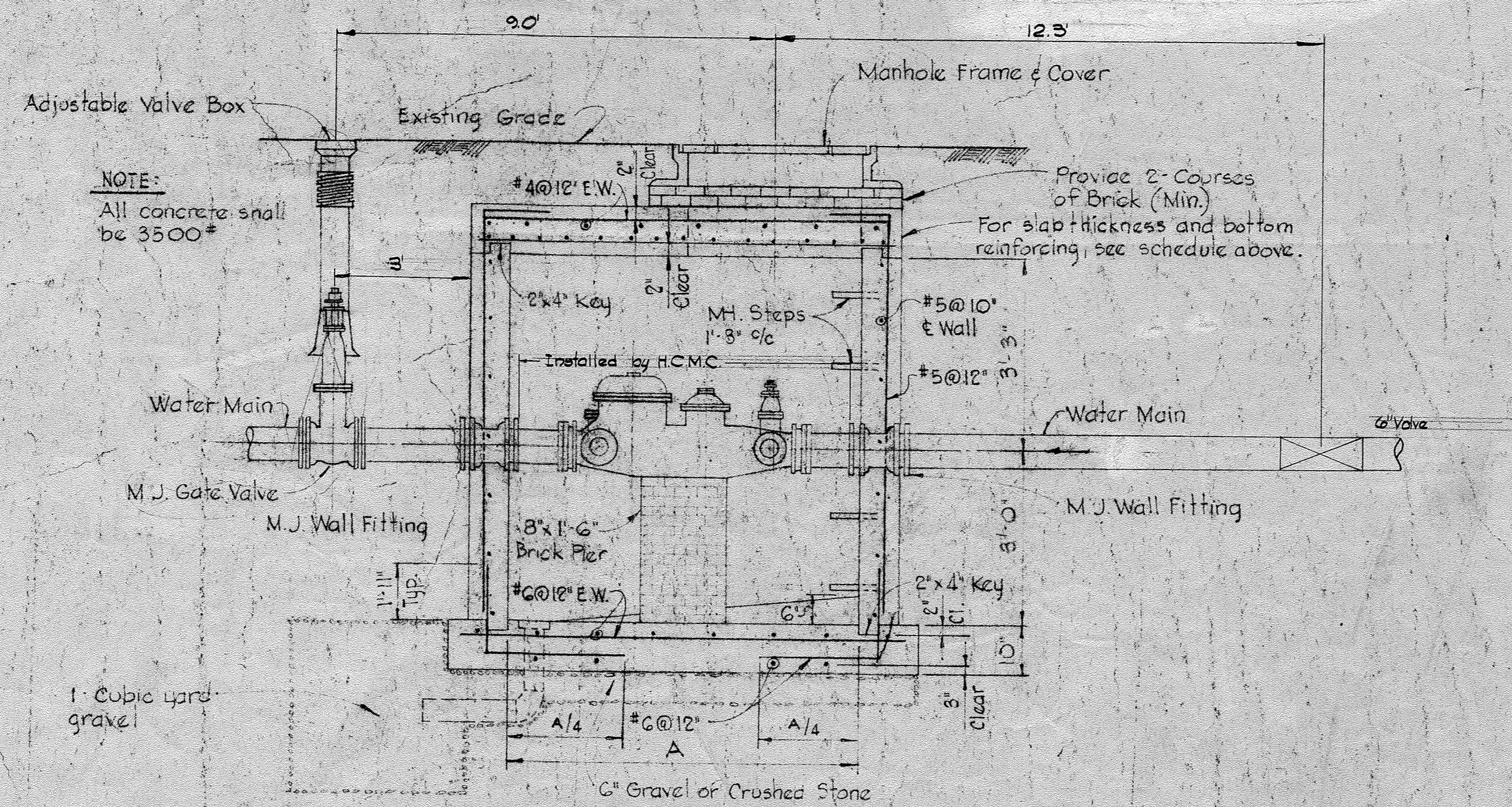
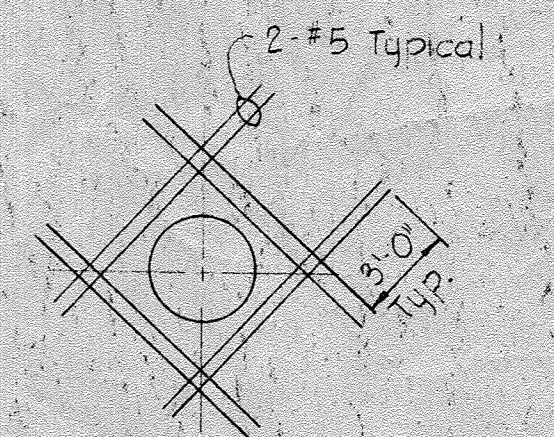
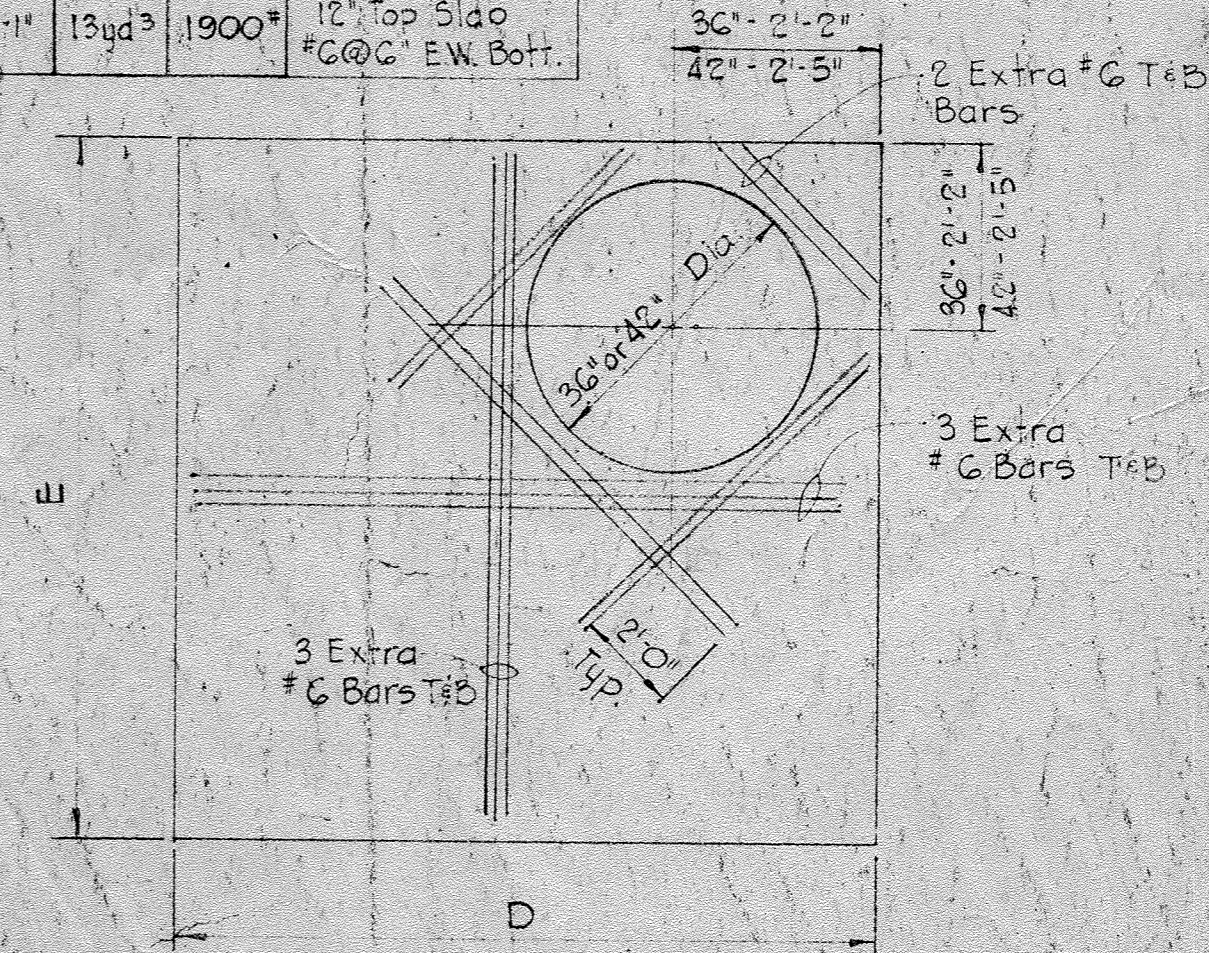
Note:
Slope floor of vault
to drain.

SCHEDULE

Meter Size	Dimensions					Concrete Required Cube Yards	Steel Required Pounds	Slab Reinforcing
	A	B	C	D	E			
4"x2" FM-CT	5'-6"	5'-6"	2'-2"	6'-10"	6'-10"	8 yd ³	1100#	10" Top Slab #5@6" E.W. Bott.
6"x3" FM-CT	6'-8"	6'-0"	2'-3"	8'-0"	7'-4"	9 yd ³	1400#	12" Top Slab #6@6" E.W. Bott.
8"x4" FM-CT	7'-6"	6'-9"	2'-5"	8'-10"	8'-1"	10 1/2 yd ³	1600#	12" Top Slab #6@6" E.W. Bott.
10"x6" FM-CT	8'-10"	7'-9"	2'-8"	10'-2"	9'-1"	13 yd ³	1900#	12" Top Slab #6@6" E.W. Bott.

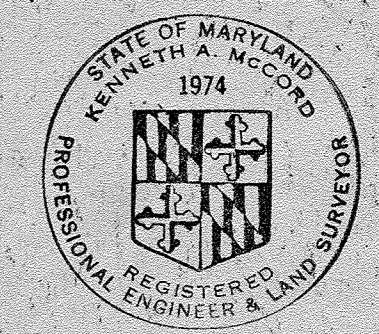


NOTE:
Meter to be furnished with plain ends
and installed with Smith-Blair 912
flanged coupling adapters



GENERAL CONCRETE NOTES

1. All reinforced concrete shall be Class A, 3500 psi at 28 days.
2. Reinforcing steel shall be "intermediate grade" (ASTM A-15) with deformations conforming to ASTM Specification A 305.
3. All dowel projections beyond construction joints shall be 30 diameters.
4. All bars laps shall be 30 diameters unless otherwise noted.



Kenneth A. Clark

Village of Oakland Mills
Oakland Mills Village Center
Contract No. C-305-W45

HOWARD COUNTY, MARYLAND
DEPARTMENT OF PUBLIC WORKS

WHITMAN, REQUARDT & ASSOCIATES
ENGINEERS
BALTIMORE, MARYLAND
NO. 6023-2

METER VAULT

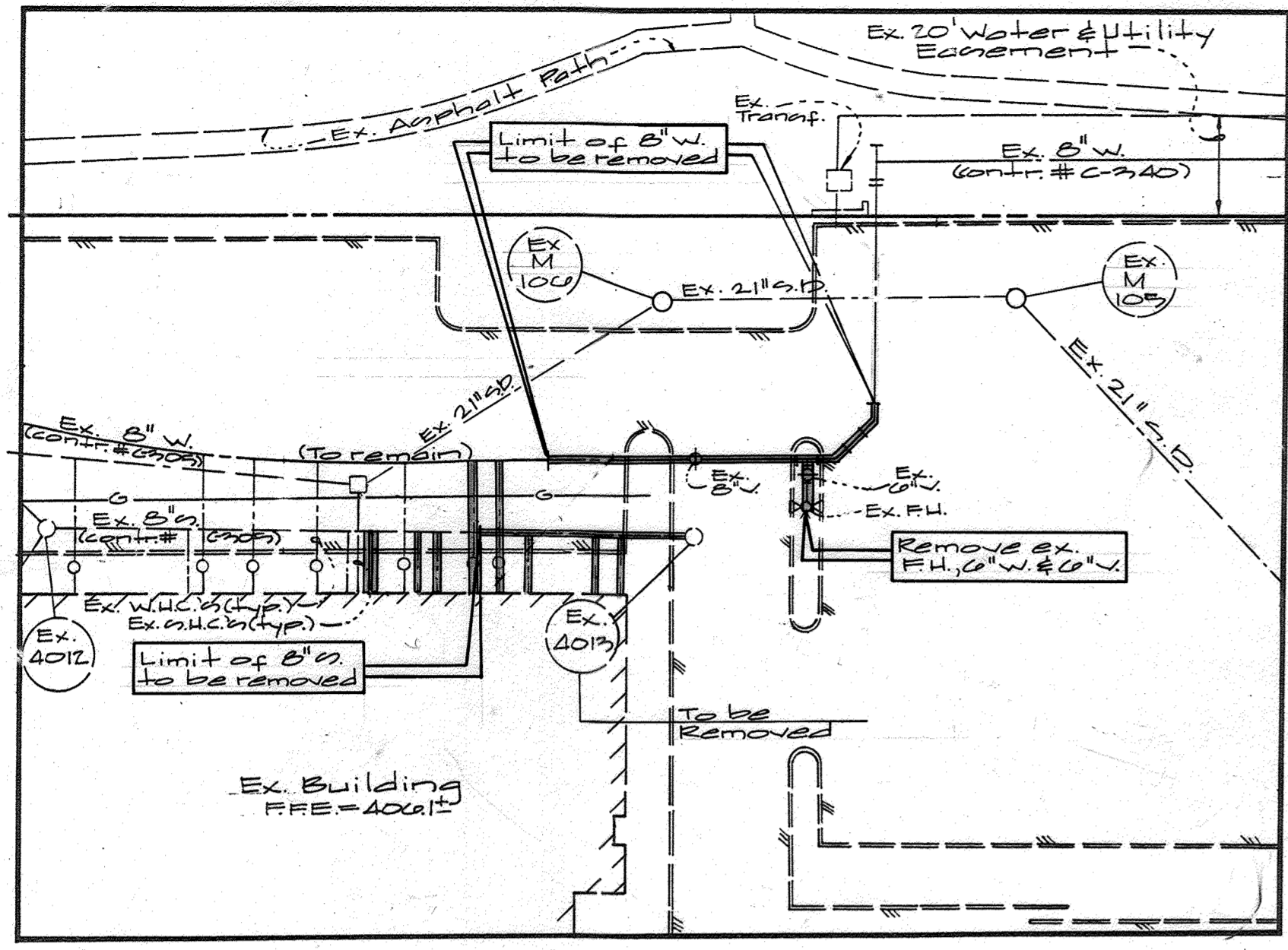
Scale: 1/2" = 1'-0"

AS BUILT
DATE: Oct 22, 1969 *W. Palbert*

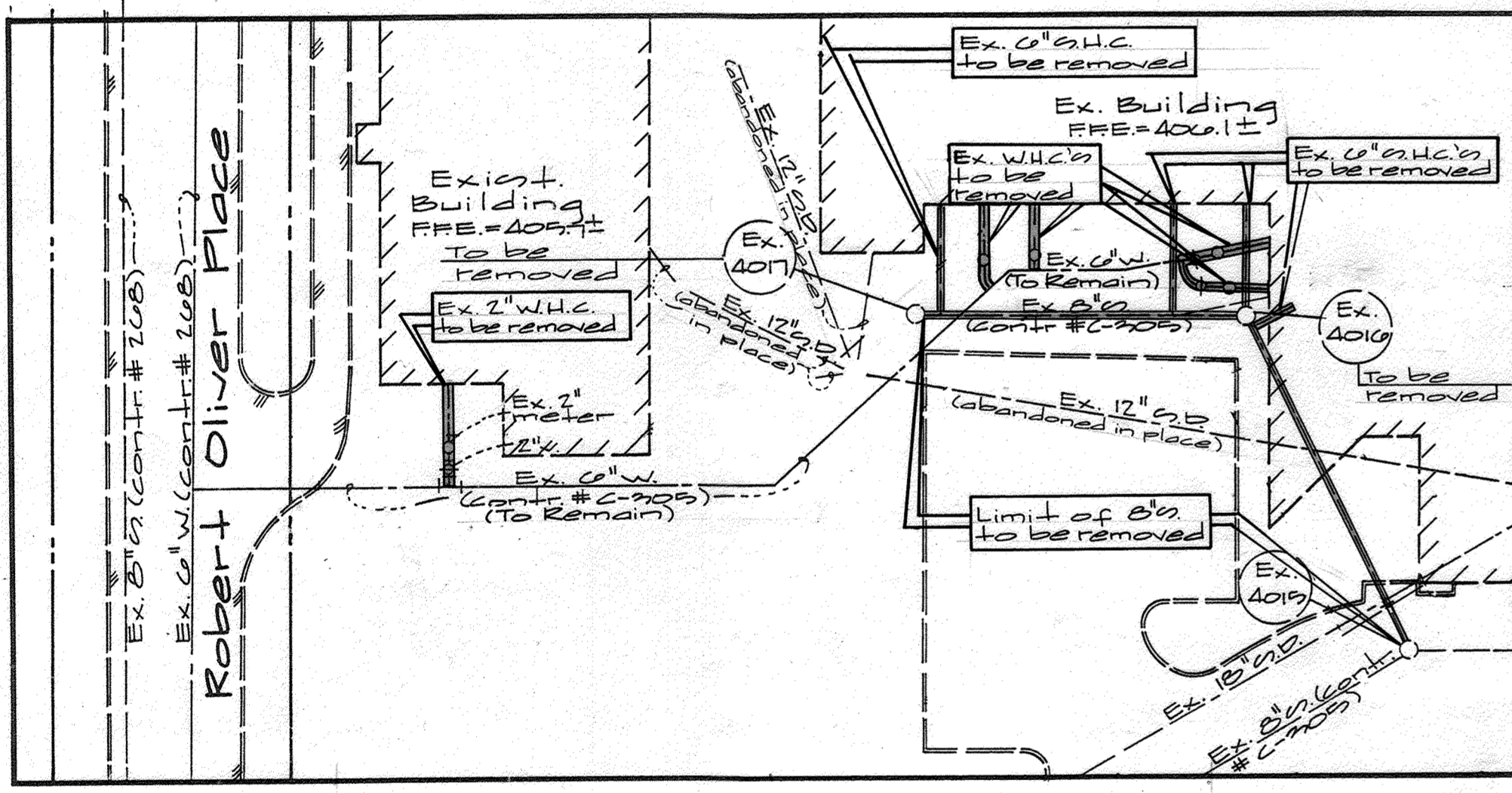
WS 305 WTS/3

Exist. 8" Water Abandonment Procedure

1. Install 8" x 8" T&E, 6" x 6" horizontal bends and associated piping and blocking. Test new main line.
2. After blocking has obtained the minimum compressive strength, install the (2) inserting Valves, Notify the Bureau of Utilities to close these Valves, to isolate the main to be removed.
3. Remove existing 8" and 6" water lines and existing fire hydrant. (See Note 4 on sheet 2 A/3).
4. Install 8" cap & buttress at inserting valve near proposed fire hydrant and install 8" water conn. as directed on sheet 2 A of 3.



Existing Water & Sewer Main and Appurtenances to be Removed
(Back Area)
Scale: 1" = 30'

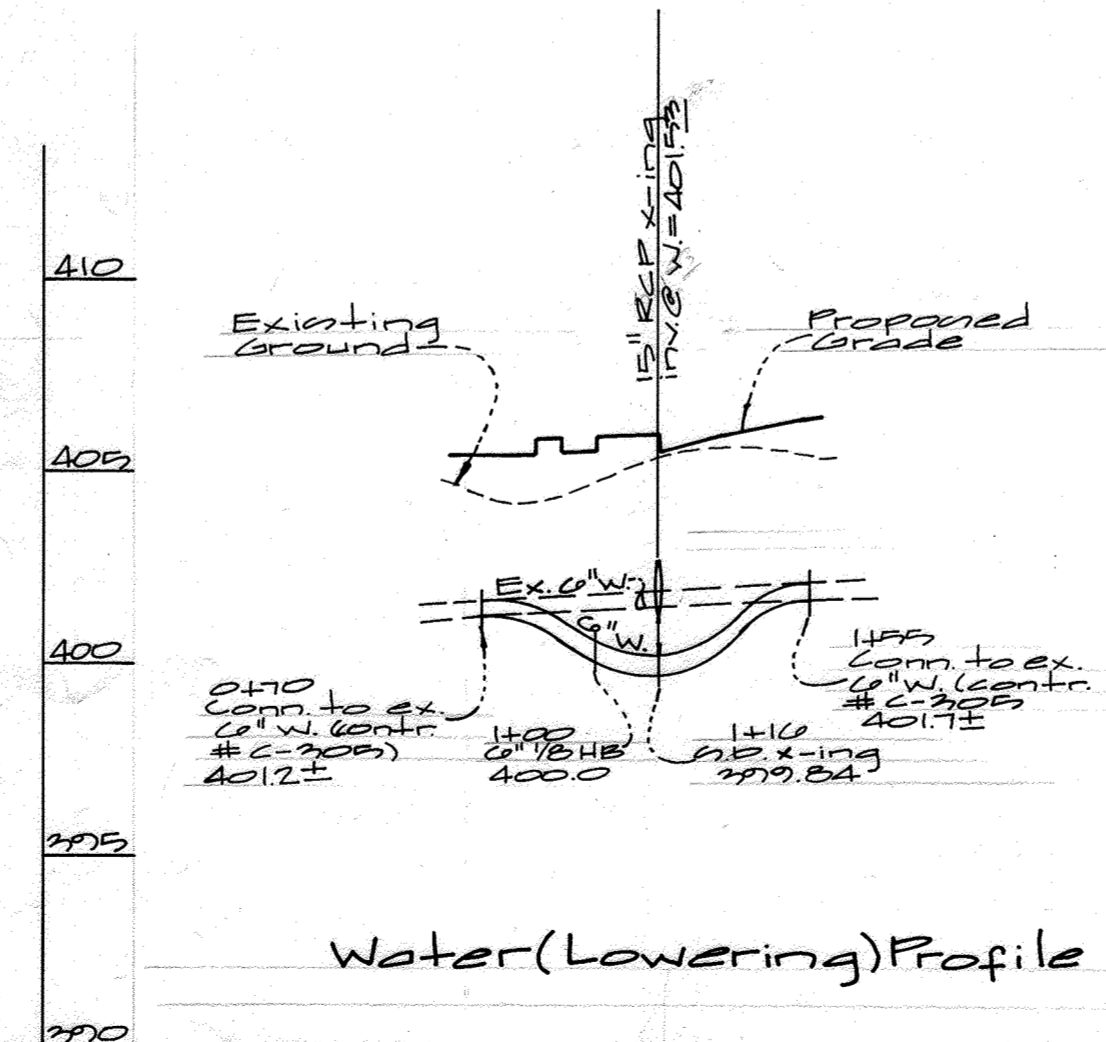


Existing Water & Sewer Main and Appurtenances to be Removed
(Front Area)
Scale: 1" = 30'

Note: For overall 50' scale Drawing see sheet 2.


Legend

- Ex. Utilities to remain
- ==== Ex. Utilities to be removed



Notes:

1. The approved and signed original sheets 1A, 2A & 3A of Contract C-305 W4S-A are part of Contract C-305 W4S approved and signed on by Chief, Bureau of Engineering.
2. For realignment of Water main and Water & Sewer house connections and fire hydrants locations, refer to these plans: 1A, 2A & 3A, approved and signed by Chief P.E.D. on

Department of Public Works Howard County, Maryland Robert A. Bennett Chief, Bureau of Utilities	Department of Planning & Zoning Howard County, Maryland William J. Dammann Chief, Development Engineering Division	GUTSCHICK LITTLE & WEBER, P.A. ENGINEERS, PLANNERS, SURVEYORS 3909 NATIONAL DRIVE, SUITE 250 • BOWLING GREEN, MARYLAND JURTSOV 15, MD. 20856 (301) 421-4700		DES: WEL/J DATE: Dec 1, 1998 CHK: BY: KCI NC: 1 REVISION: ASBUILT DATA ADDED TO PLAN	Demolition Plan	Columbia Village of Oakland Mills Village Center Section 2 Area 1 Lots 17 & 18 Guilford Election District No. 6 Contract No. C-305 W4S-A	SCALE AS SHOWN SHEET 2A OF 3
--	---	--	---	---	-----------------	--	-------------------------------------