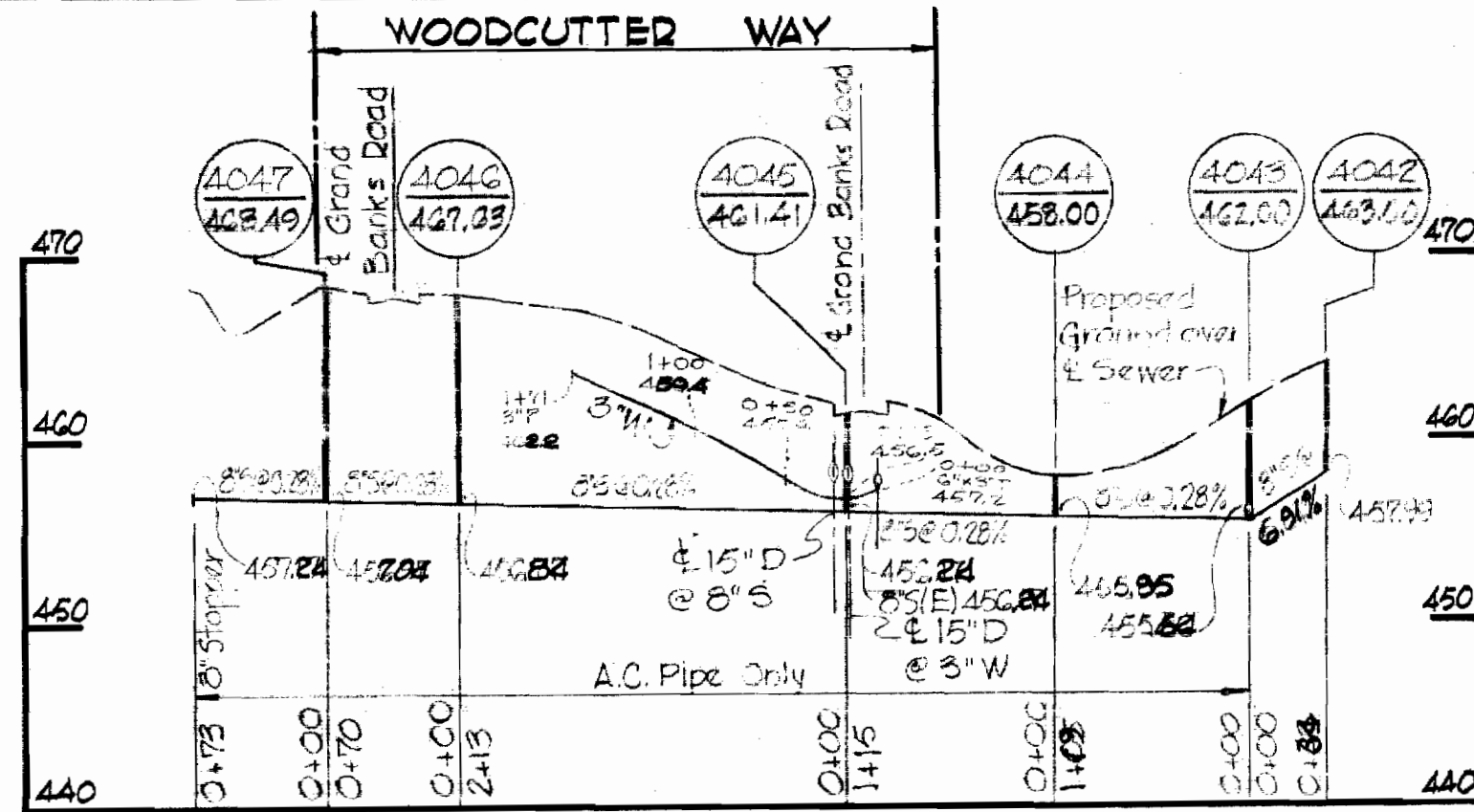
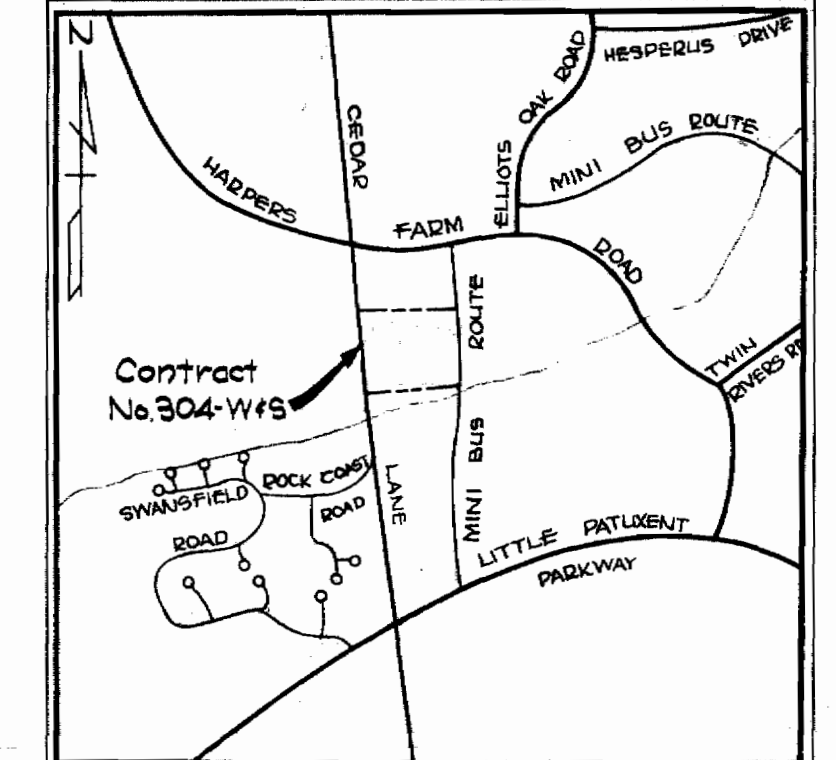
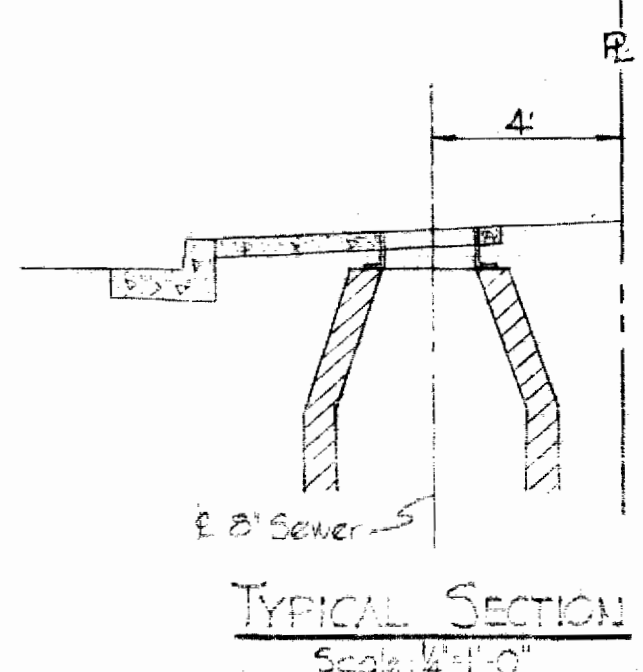


PROFILES
 Horiz: 1"=100'
 Vert: 1"=10'



Sewer Pipe - A.C.
 Water Pipe - C.I.



VICINITY MAP
 Scale: 1"=1200'

GENERAL NOTES

1. Approximate location of existing mains are shown. The contractor shall take all necessary precaution to protect existing mains and services and maintain uninterrupted supply. Any damage incurred shall be repaired immediately.
2. All pipe elevations shown are invert elevations.
3. The Contractor shall locate existing utilities a minimum of two weeks in advance of construction operations in vicinity of utilities.
4. For all standard details see standards bound in Specifications.
5. All water mains to be C.I.P or D.I.P and have a minimum of 3 1/2' cover.
6. Block all fittings with concrete, see standards details bound in Specifications.
7. Bury line elevations on Fire Hydrants shall be set to elevations shown on drawings.
8. All Fire Hydrants shall be strapped to Tee and buttressed with concrete in accordance with Standard Details.
9. Clear all utilities by a minimum of 6'; clear all poles by 2'-0" minimum or tunnel as required.
10. The Contractor shall provide a joint in all sewer mains within 2'-0" of exterior manhole walls.
11. All water house connections to be 1" unless otherwise specified.
12. All horizontal and vertical controls are based on Maryland State Datum.

QUANTITIES	
8" Sewer Main	1540'
6" Water Main	825'
8" Water Main	500'
Fire Hydrant	2'

STAKEOUT & DIABY IN F.B. # 4501



Kenneth A. Whitman

Village of Harper's Choice
 Section 3 Area 4
 Harpers Village Townhouses
 Contract No. 304-W/S

WHITMAN, REQUARDT & ASSOCIATES
 ENGINEERS
 1304 ST. PAUL ST.
 BALTIMORE, MARYLAND

HOWARD COUNTY METROPOLITAN COMMISSION
 7-22-69 *W. O. Filbert*
 DATE CHIEF ENGINEER

CONTRACT NO. C-304-W/S

PLAN AND PROFILES
WATER & SEWER MAINS

COLUMBIA
VILLAGE OF HARPER'S CHOICE
ELECTION DISTRICT CLARKSVILLE No.5

DRAWING
 NO. 1
 OF 1

SCALE
 AS SHOWN

304-476
 305-476

AS BUILT March 4, 1970