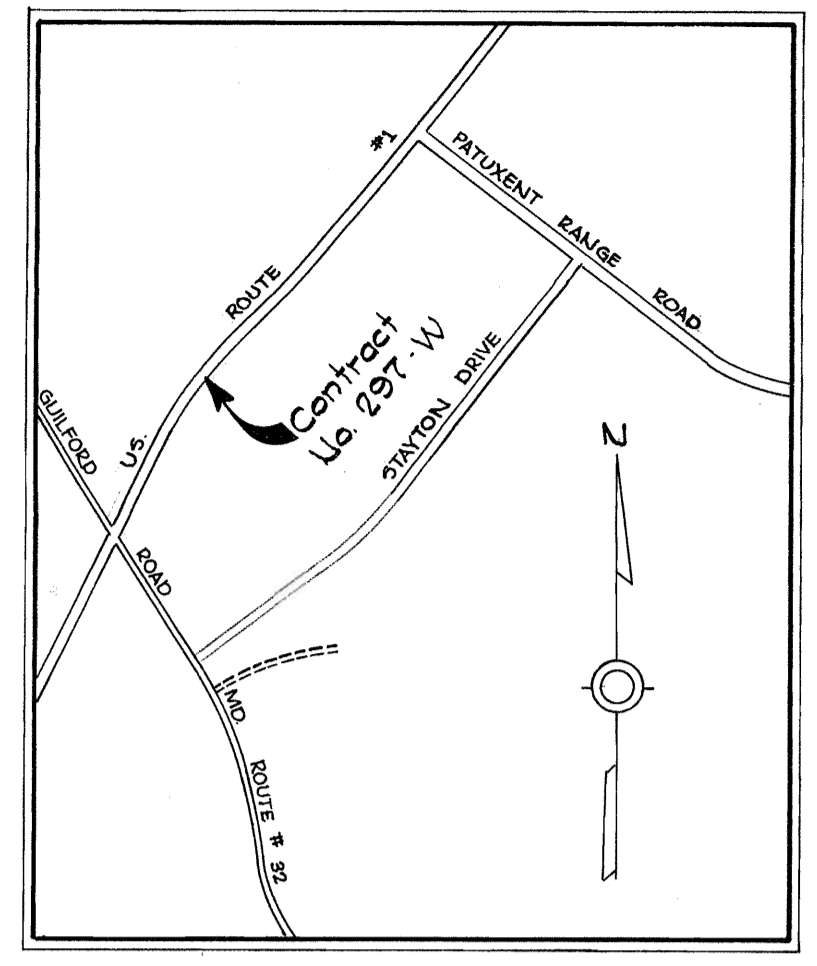


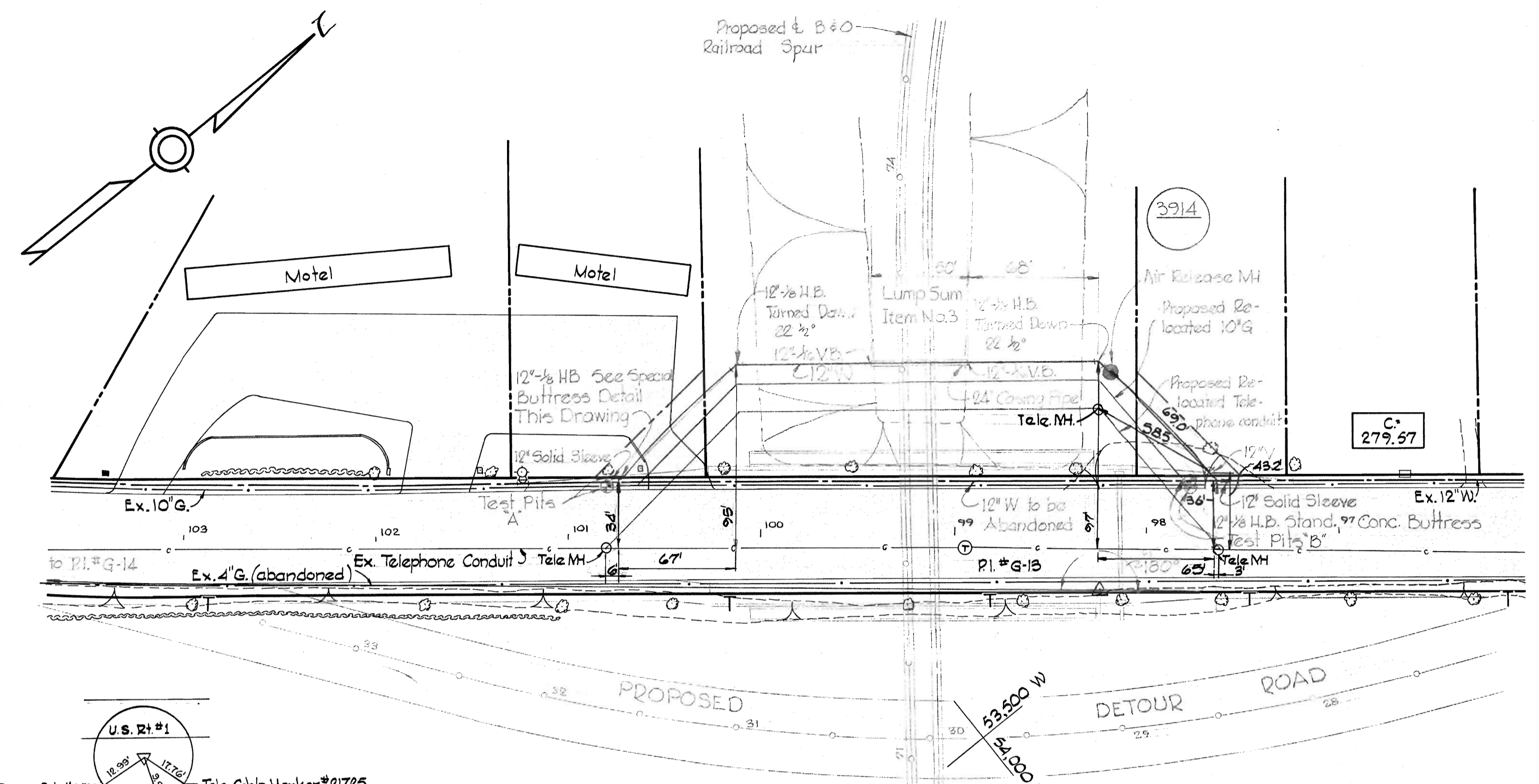
NR #A BM #G-9 Elev 382.34
 RR Spike in Power Pole # 309552 3.0' left of
 sta. 4+10 between P.I. #G-14 and P.I. #G-15.

GENERAL NOTES

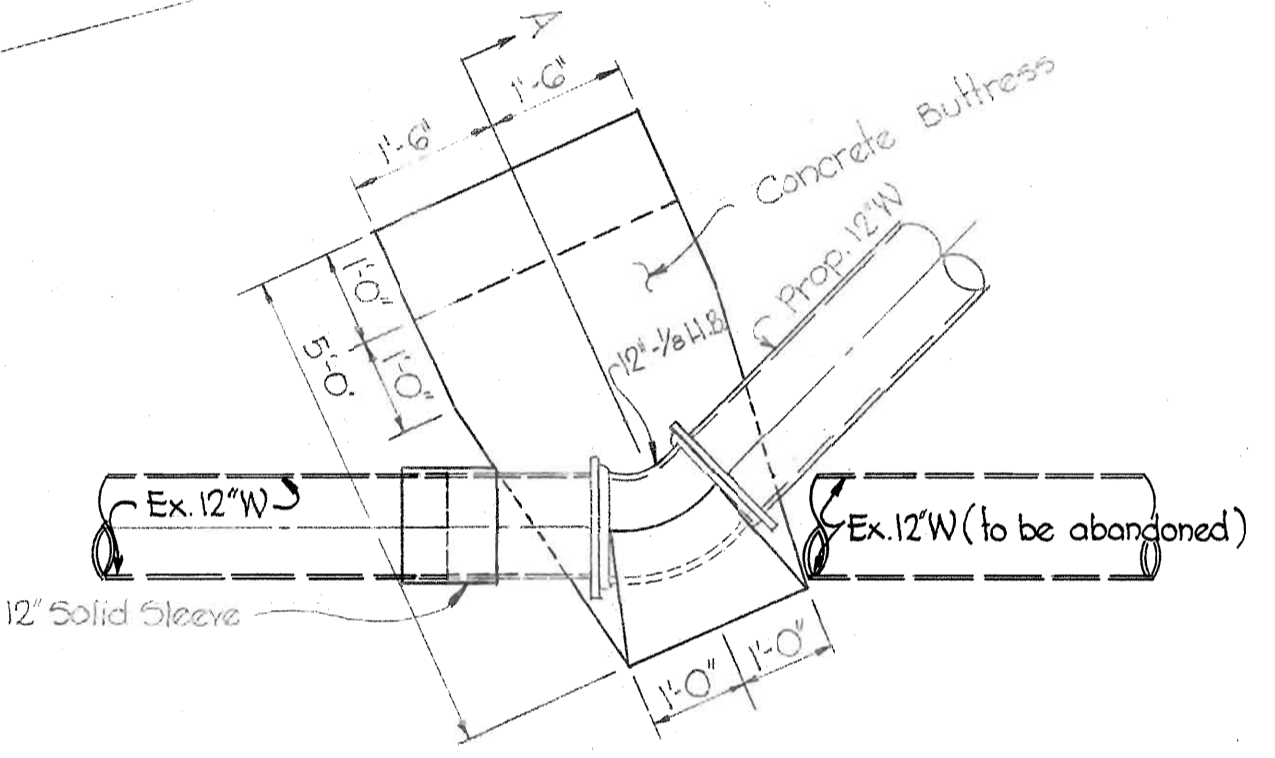
1. Approximate location of existing mains are shown. The Contractor shall take all necessary precautions to protect existing mains and services and maintain uninterrupted supply. Any damage incurred shall be repaired immediately.
2. All pipe elevations shown are invert \ominus elevations.
3. The Contractor shall locate existing utilities a minimum of two weeks in advance of construction operations in vicinity of utilities.
4. For all standard details see Standards bound in Specifications.
5. All Water mains to be D.I.P. and have and have a minimum of 3/2' cover.
6. Block all fittings with concrete, see standard details bound in Specifications.
7. Vertical controls are in State Datum. Horizontal controls are in Howard County Datum.
8. Time of connection to existing 12" W to be as directed by Howard County Department of Public Works. It may be any time on any day or night.



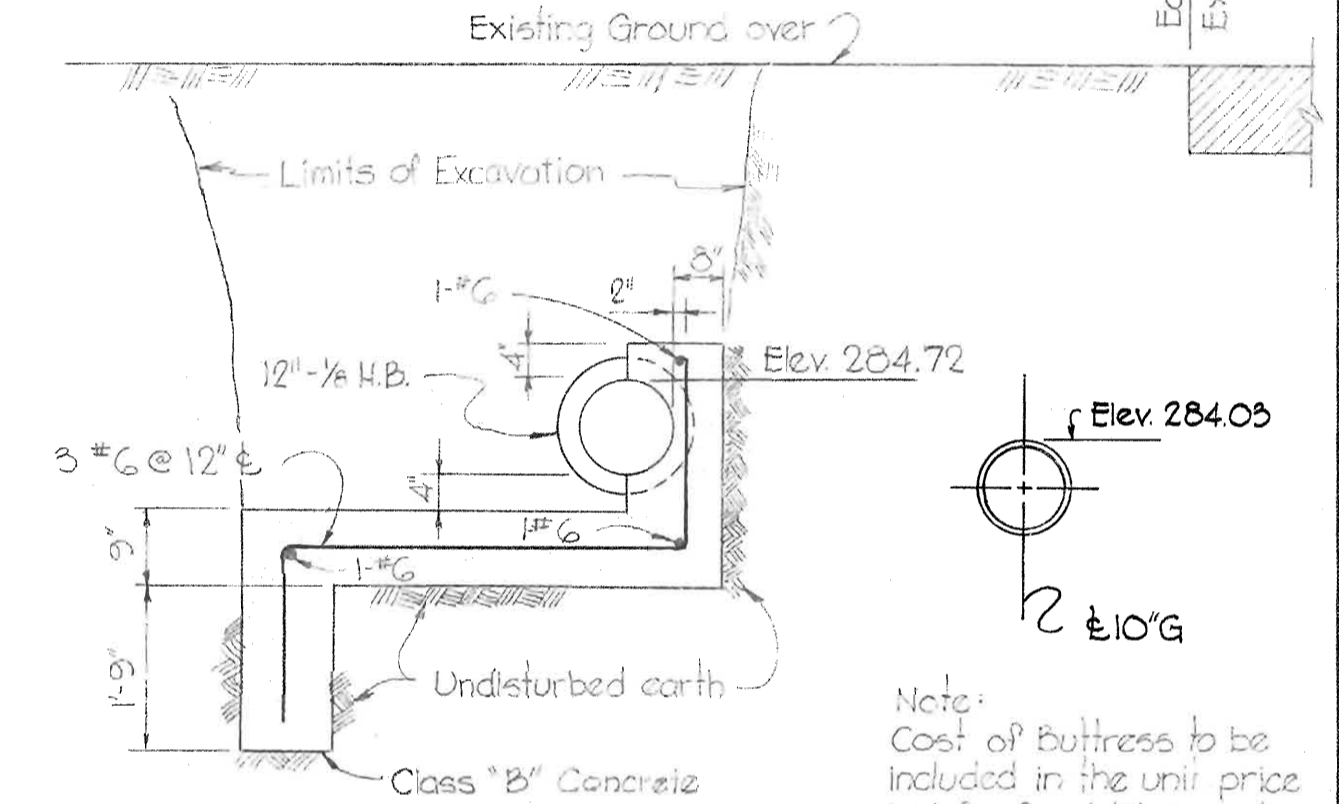
VICINITY MAP
 Scale: 1"=1200'



PLAN
 Scale: 1"=50'



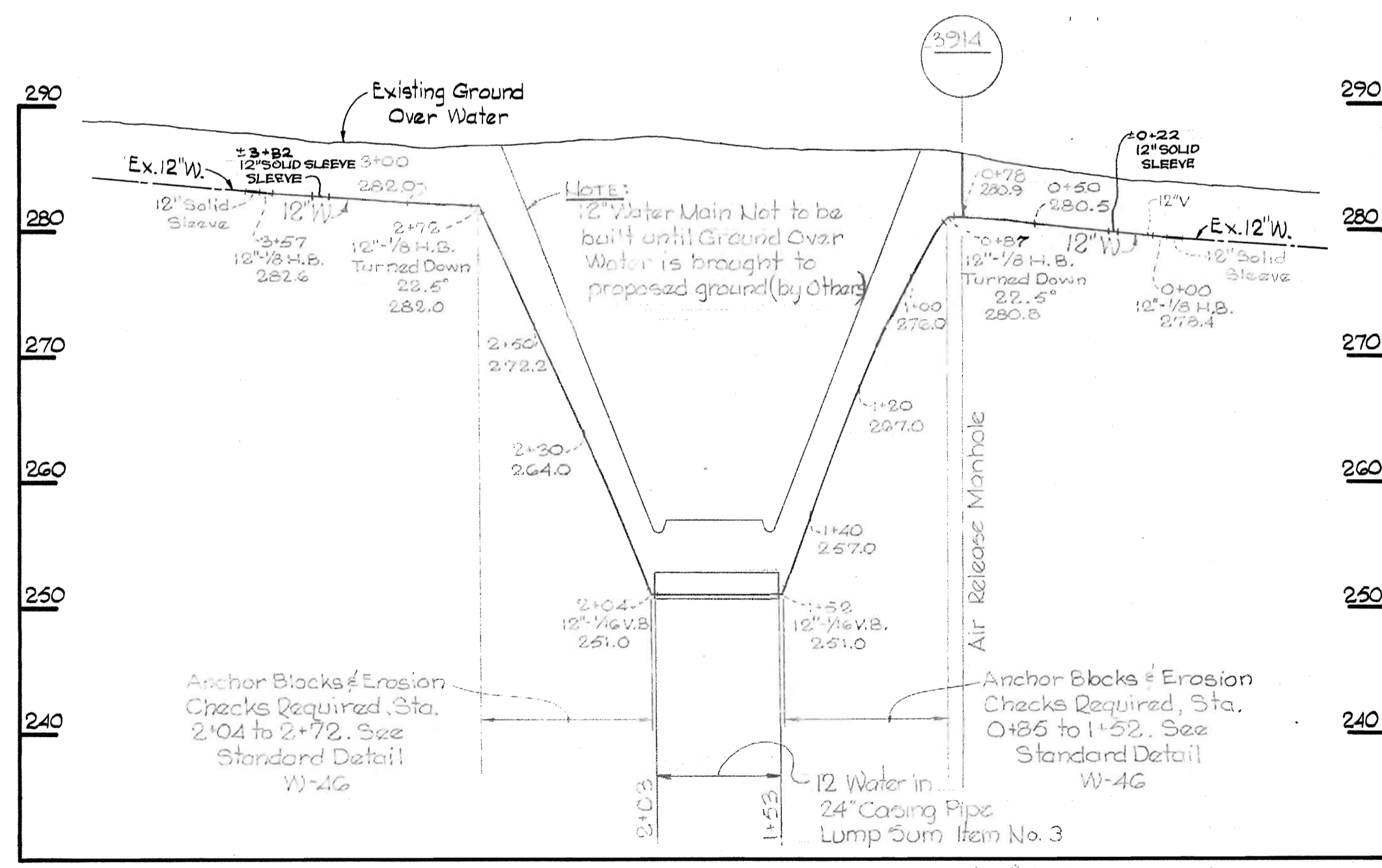
SPECIAL BUTTRESS DETAIL
 Scale: 1/2"=1'-0"



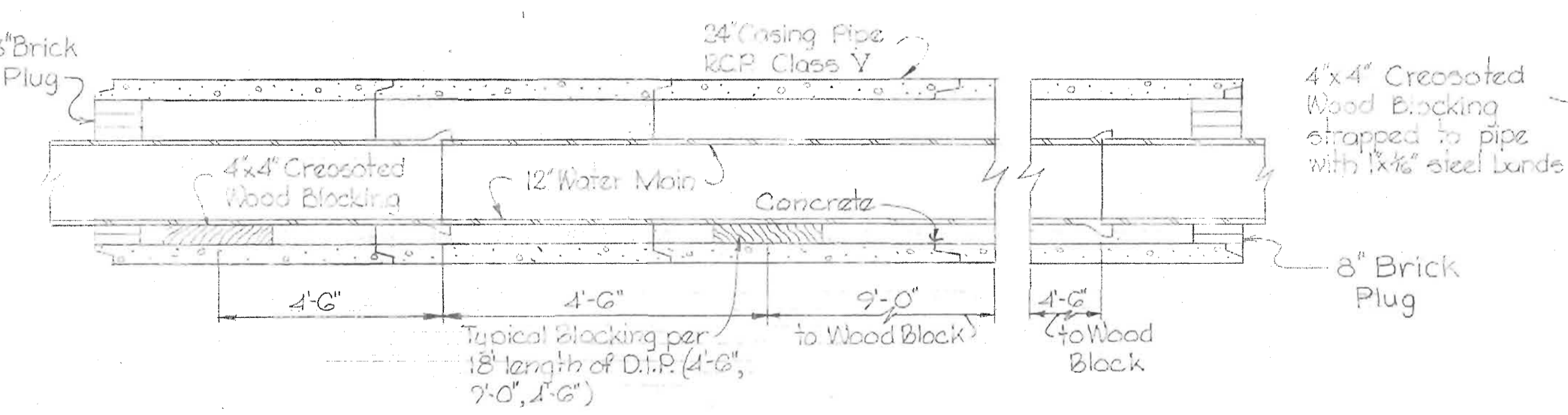
SECTION 'A-A'
 Scale: 1/2"=1'-0"

TEST FIT TABULATION

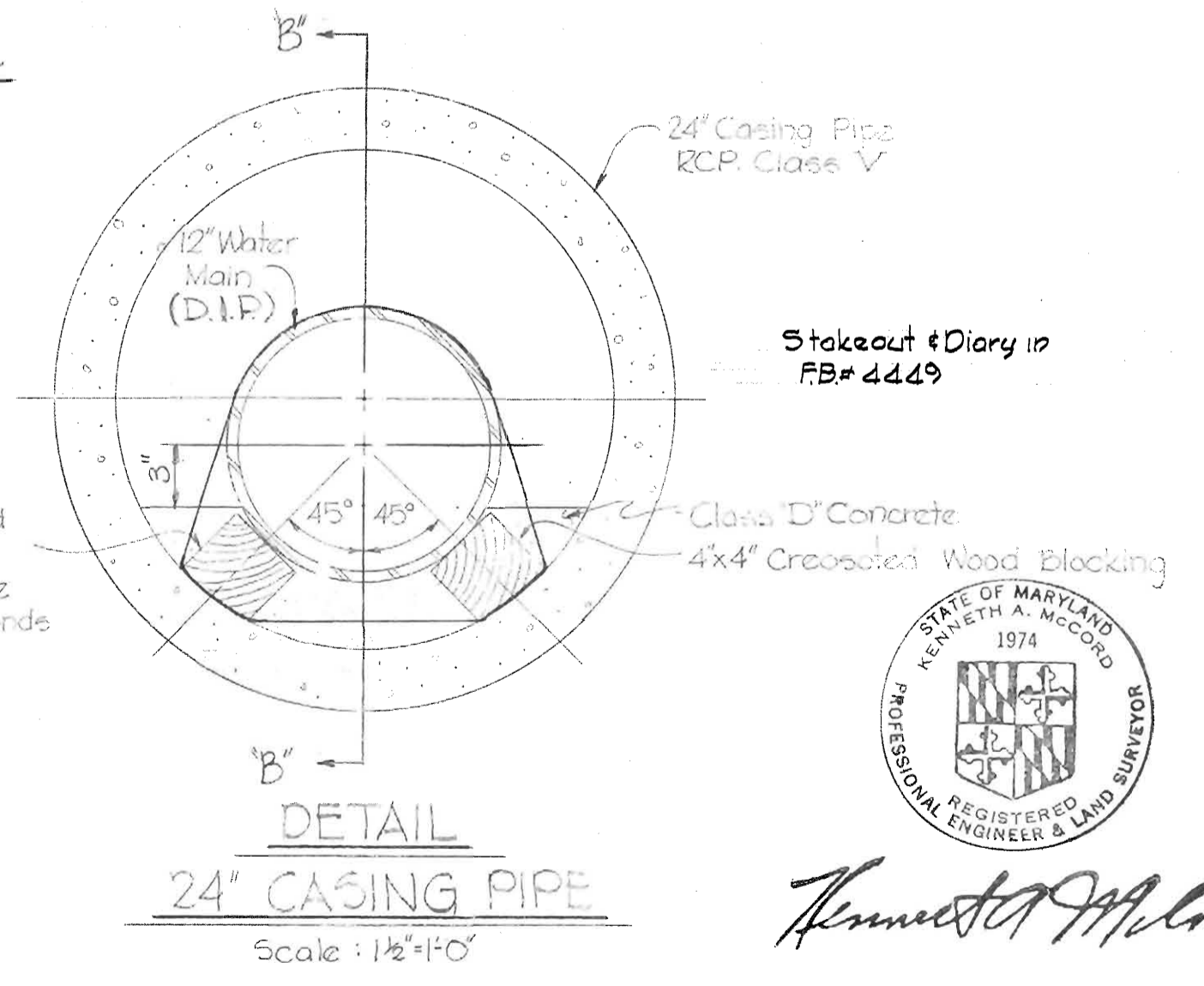
M	N	Top 10" Gas	Top 12" W
A 1.50	5.17	284.05	284.72
E 0.70	3.78	279.89	275.84



PROFILE
 Scale: Hor. 1"=50'
 Ver. 1"=10'



SECTION 'B-B'
 Scale: 1/2"=1'-0"



DETAIL
24" CASING PIPE
 Scale: 1/2"=1'-0"



Kenneth A. McLeod

WHITMAN, REQUARDT & ASSOCIATES
 ENGINEERS
 1304 ST. PAUL ST.
 BALTIMORE, MARYLAND

HOWARD COUNTY METROPOLITAN COMMISSION
 3-26-69 DATE
W. O. G. 24-2 CHIEF ENGINEER

CONTRACT NO. 297-W

PLAN & PROFILE
 OF WATER MAINS

GUILFORD SUB - DISTRICT

Contract No 297-W
 DRAWING NO. 1 OF 1
 SCALE AS SHOWN
 FB# 3135
 FB# 3114

AS BUILT Sept. 24, 1969

WS 297-W/1