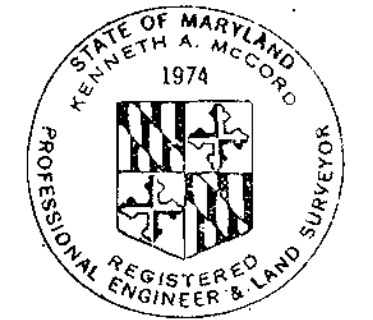


CONTRACT NO. 292-S
DEEP CREEK INTERCEPTOR SECTION III
HOWARD COUNTY DEPARTMENT OF PUBLIC WORKS
ELLICOTT CITY, MARYLAND



Kenneth A. McLeod

Stakeout 5406
Diary 5309

Deep Creek Interceptor
Section III
Contract No. 292-S

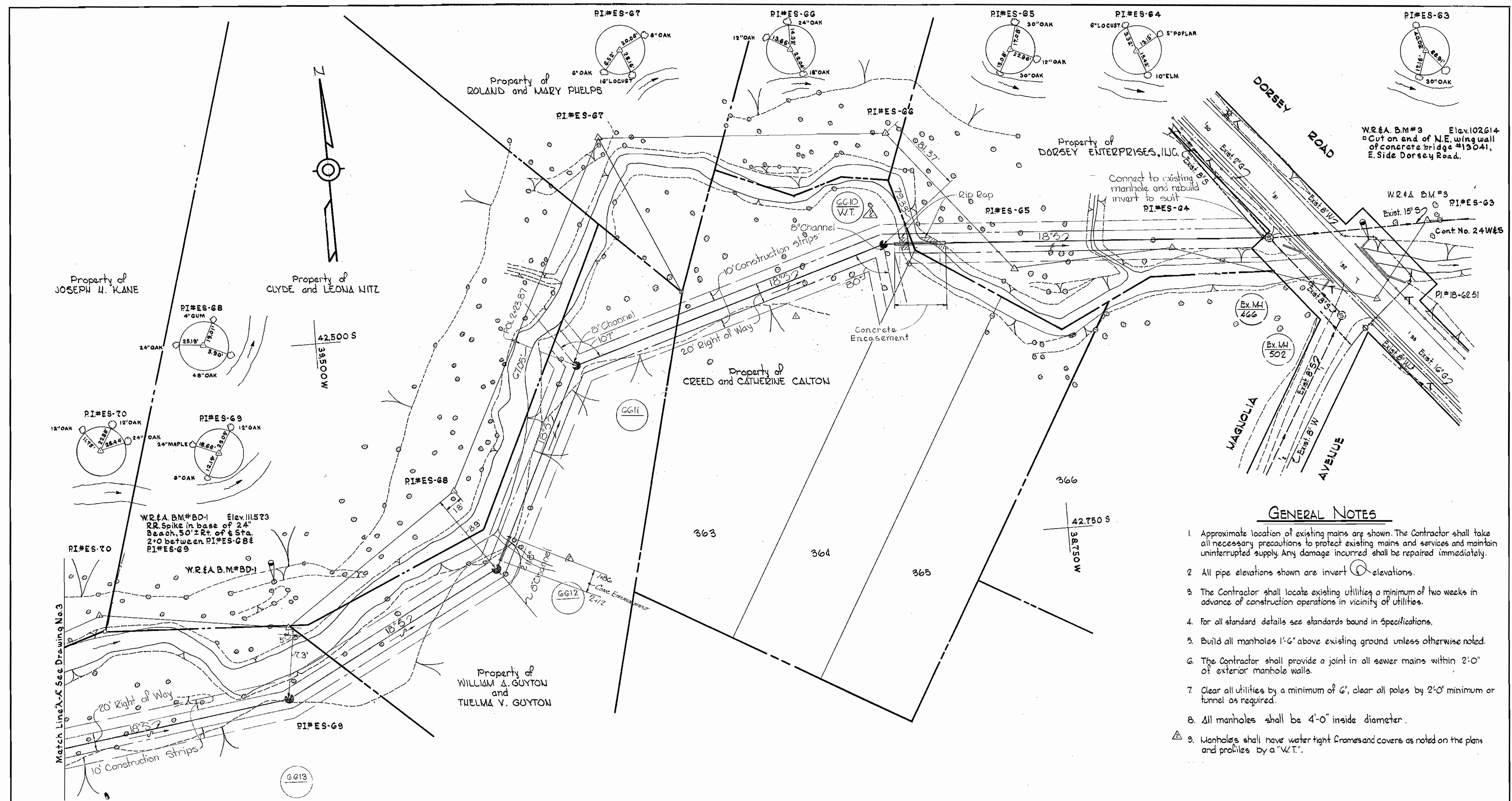
WHITMAN, REQUARDT & ASSOCIATES ENGINEERS 1304 ST. PAUL ST. BALTIMORE, MARYLAND	DEPARTMENT OF PUBLIC WORKS HOWARD COUNTY, MARYLAND DATE <u>2-11-71</u> <i>W. O. Fallick</i> CHIEF, BUREAU OF WATER AND SEWER	CONTRACT NO. <u>292-S</u>	LOCATION MAP	DEEP CREEK INTERCEPTOR SECTION NO. 3	DRAWING NO. <u>1</u> OF <u>7</u> SCALE AS SHOWN
---	--	---------------------------	--------------	---	---

August 3, 1971

AS BUILT

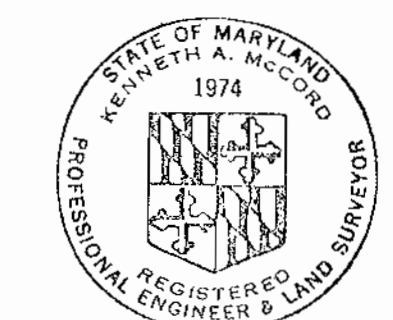
WS 292-5/1

WS 292-S/2



GENERAL NOTES

1. Approximate location of existing mains are shown. The Contractor shall take all necessary precautions to protect existing mains and services and maintain uninterrupted supply. Any damage incurred shall be repaired immediately.
2. All pipe elevations shown are invert elevations.
3. The Contractor shall locate existing utilities a minimum of two weeks in advance of construction operations in vicinity of utilities.
4. For all standard details see standards bound in Specifications.
5. Build all manholes 1'-6" above existing ground unless otherwise noted.
6. The Contractor shall provide a joint in all sewer mains within 2'-0" of exterior manhole walls.
7. Clear all utilities by a minimum of 6", clear all poles by 2'-0" minimum or tunnel as required.
8. All manholes shall be 4'-0" inside diameter.
9. Manholes shall have water tight frames and covers as noted on the plans and profiles by a "W.T."



Kenneth A. McLeod

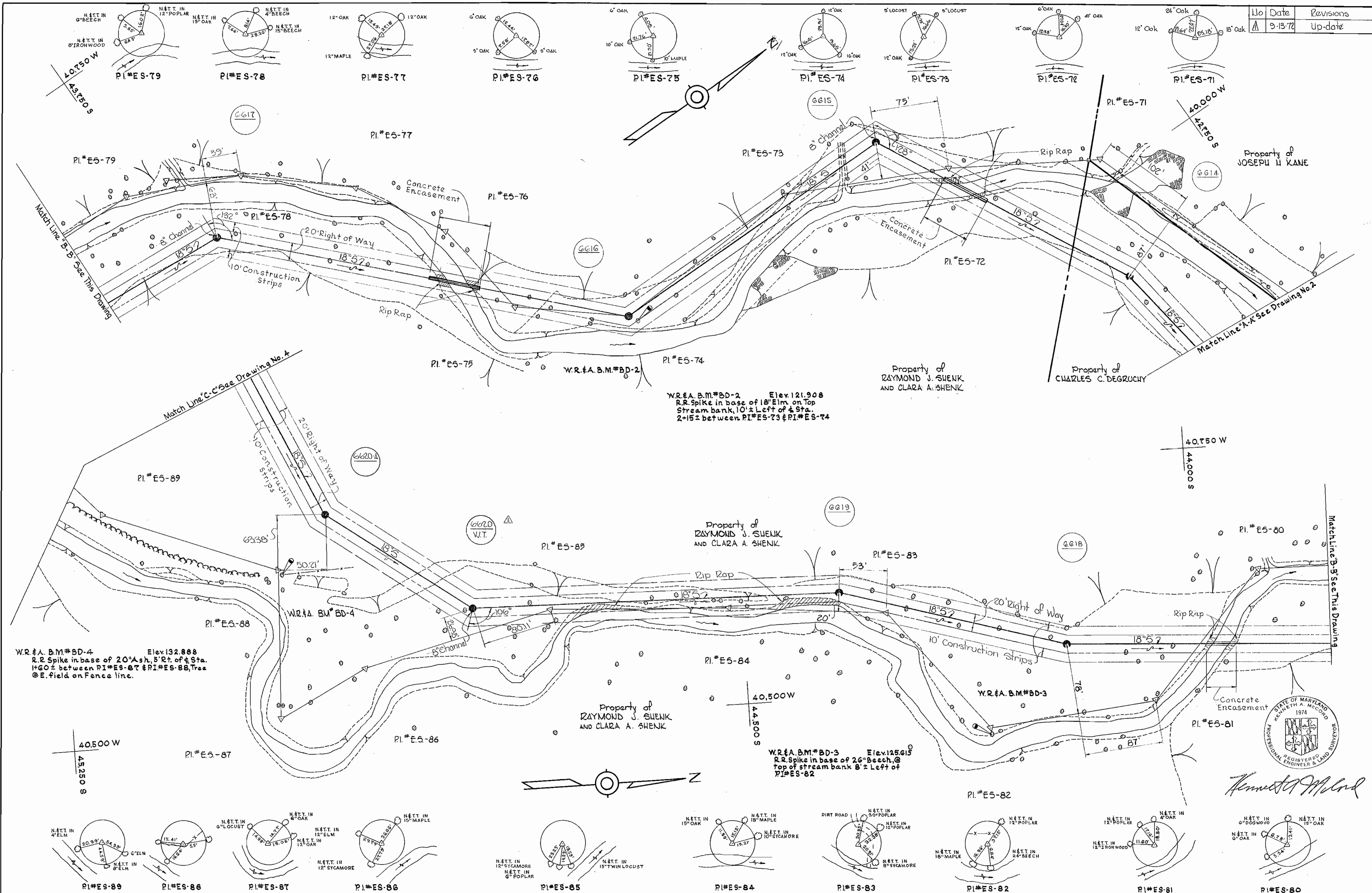
9-13-72	Up-date
2-10-72	Realigned Sewer between MH#466 and MH#6612
No	Date: Revision

Deep Creek Section No. 3
Contract No. 292-S

WHITMAN, REQUARDT & ASSOCIATES ENGINEERS 1304 ST. PAUL ST. BALTIMORE, MARYLAND	DEPARTMENT OF PUBLIC WORKS HOWARD COUNTY, MARYLAND 2-11-71 DATE <i>W. O. Falbert</i> CHIEF-BUREAU OF WATER AND SEWER	CONTRACT NO. 292-S	PLAN OF SEWER MAINS	DEEP CREEK SECTION NO. 3	DRAWING NO. 2 OF 7	SCALE 1" = 50' 43 SW 27 43 SW 26
					August 3, 1974 AS BUILT	

W. O. 6021-2

No	Date	Revisions
1	9-13-72	Up-date



W.R.#A. B.M.#BD-4 Elev. 132.888
R.R. Spike in base of 20" Ash, 5' Rt. of Sta.
14' 0" ± between PI#E5-87 & PI#E5-88, Tree
@ E. field on Fence line.

W.R.#A. B.M.#BD-2 Elev. 121.908
R.R. Spike in base of 18" Elm on Top
Stream bank, 10' ± Left of Sta.
2-15 ± between PI#E5-73 & PI#E5-74

W.R.#A. B.M.#BD-3 Elev. 125.615
R.R. Spike in base of 26" Beech, @
top of stream bank 8' ± Left of
PI#E5-82



Kenneth A. McLeod

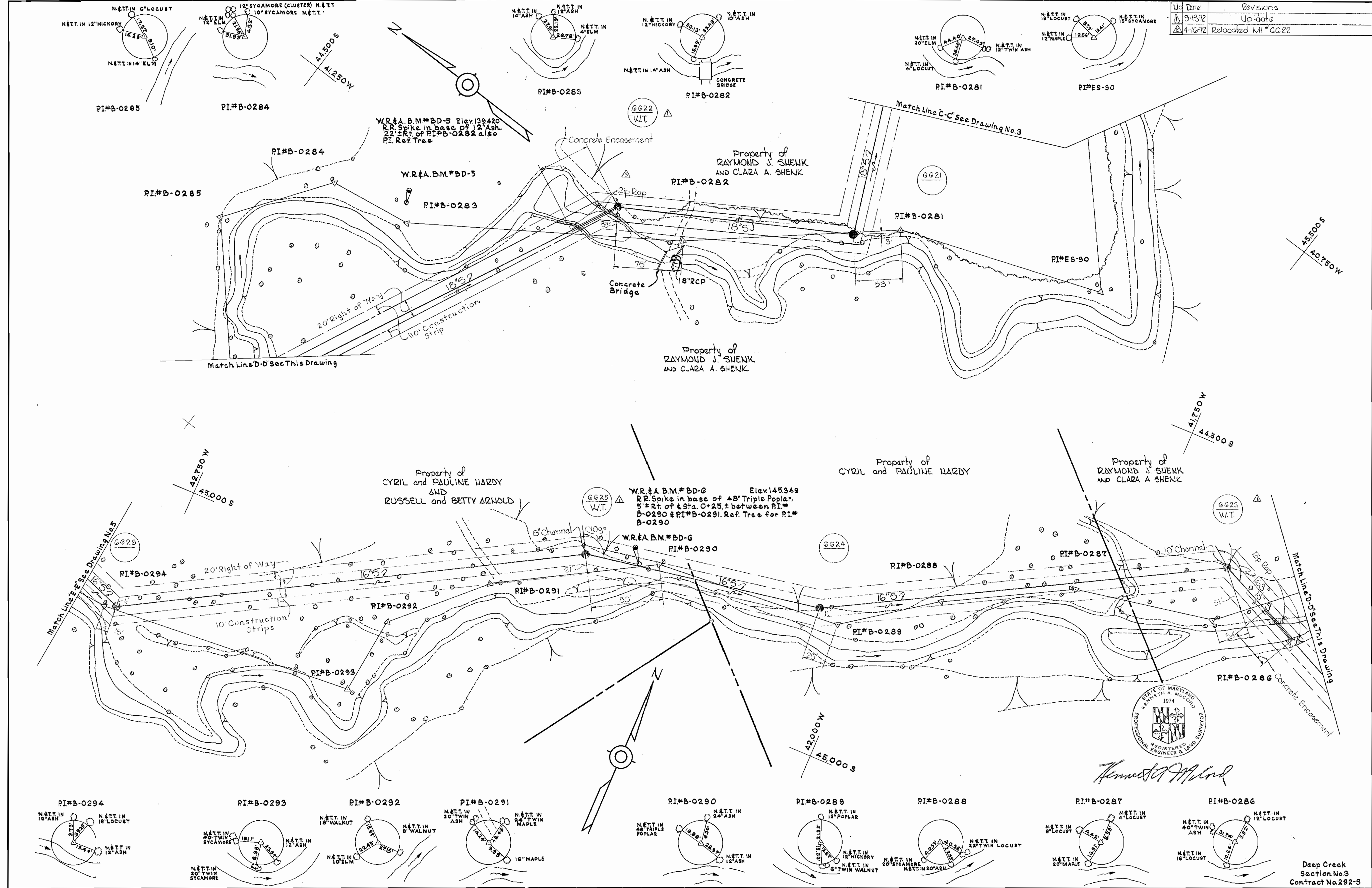
WHITMAN, REARDT & ASSOCIATES ENGINEERS 1304 ST. PAUL ST. BALTIMORE, MARYLAND	DEPARTMENT OF PUBLIC WORKS HOWARD COUNTY, MARYLAND DATE 2-11-71 <i>W.O. Palber</i> CHIEF-BUREAU OF WATER AND SEWER	CONTRACT NO. 292-S	PLAN OF SEWER MAINS	DEEP CREEK SECTION NO. 3	DRAWING NO. 3	SCALE 1"=50'
					OF 7	45 SW 27 44 SW 27 44 SW 28

W. O. 6021-2

August 3, 1974

MS 292-5/3

Rev	Date	Revisions
5-13-72		Up-date
4-16-72		Relocated MH # GG22



WHITMAN, REQUARDT & ASSOCIATES
ENGINEERS
1304 ST. PAUL ST.
BALTIMORE, MARYLAND

DEPARTMENT OF PUBLIC WORKS
HOWARD COUNTY, MARYLAND
2-11-71
DATE

CONTRACT NO. 292-S

PLAN OF
SEWER MAINS

DEEP CREEK
SECTION NO. 3

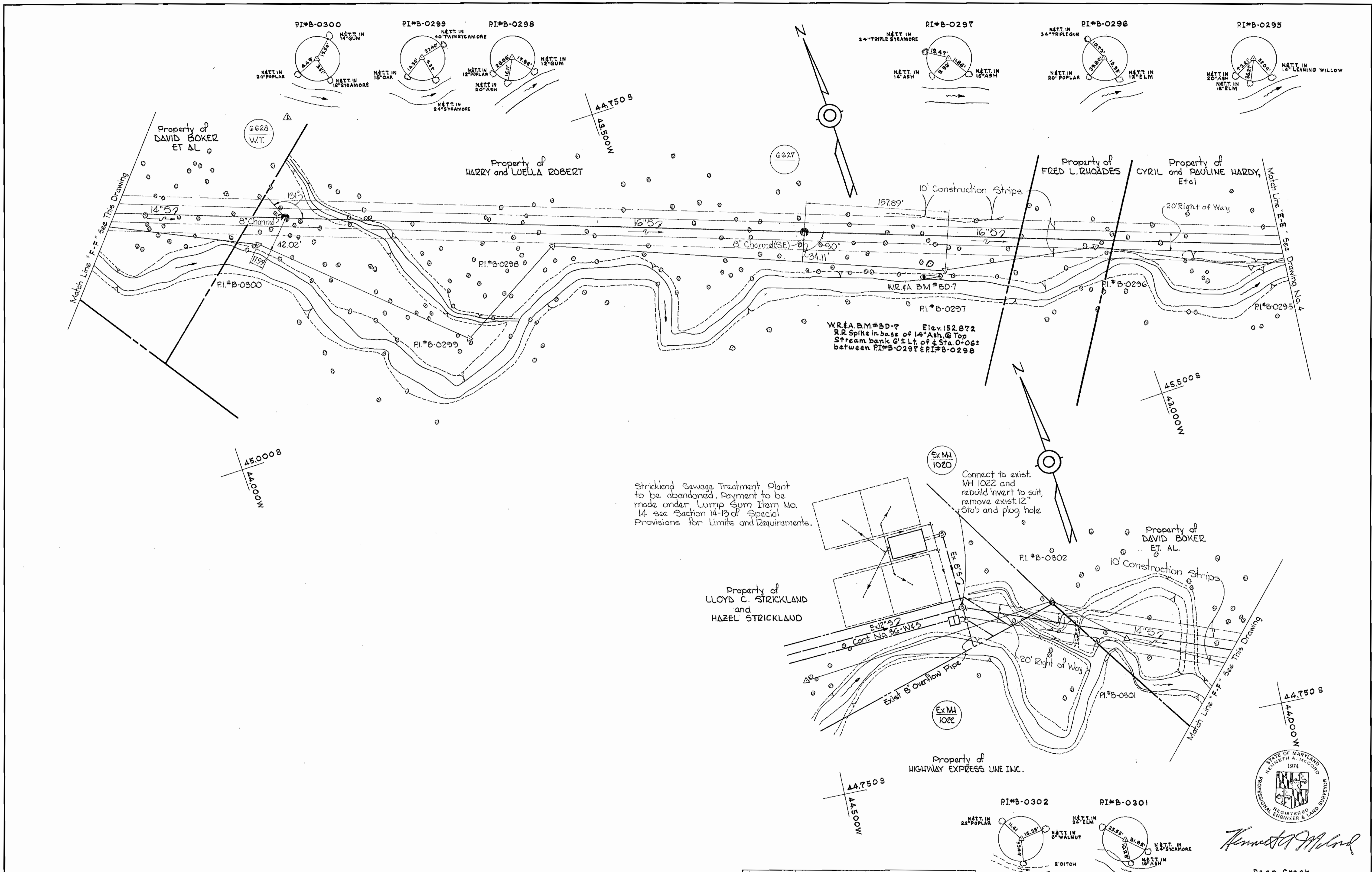
DRAWING NO.	SCALE	Sheet
OF 7	1"=50'	45 SW 28
		45 SW 29
		46 SW 28
		46 SW 29

W.O.G021-2

August 3, 1974
AS BUILT

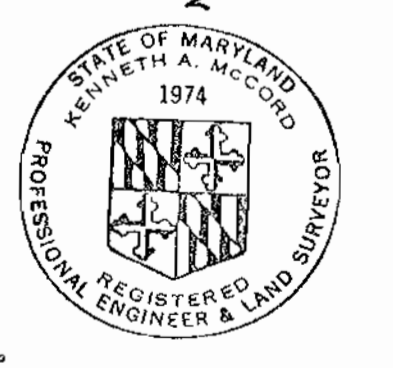
WS 292-S/4

WS 292-5/5



Strickland Sewage Treatment Plant to be abandoned. Payment to be made under Lump Sum Item No. 14 see Section 14-13 of Special Provisions for Limits and Requirements.

Connect to exist. MH 1022 and rebuild invert to suit, remove exist. 12" stub and plug hole



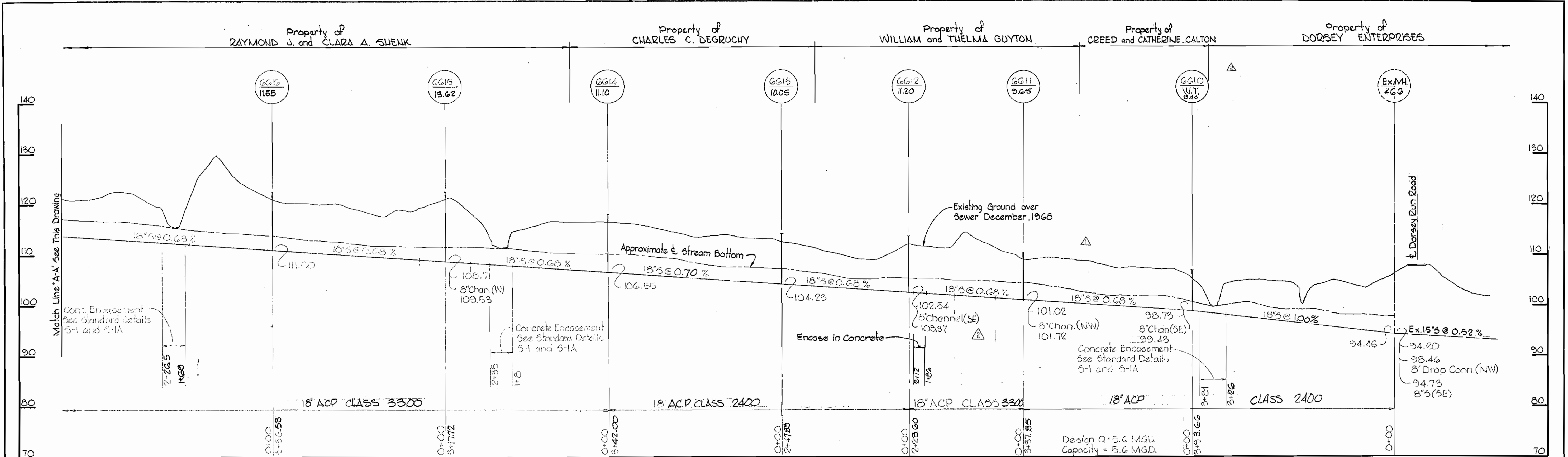
Kenneth A. McCord

Deep Creek Section No. 3
Contract No. 292-5

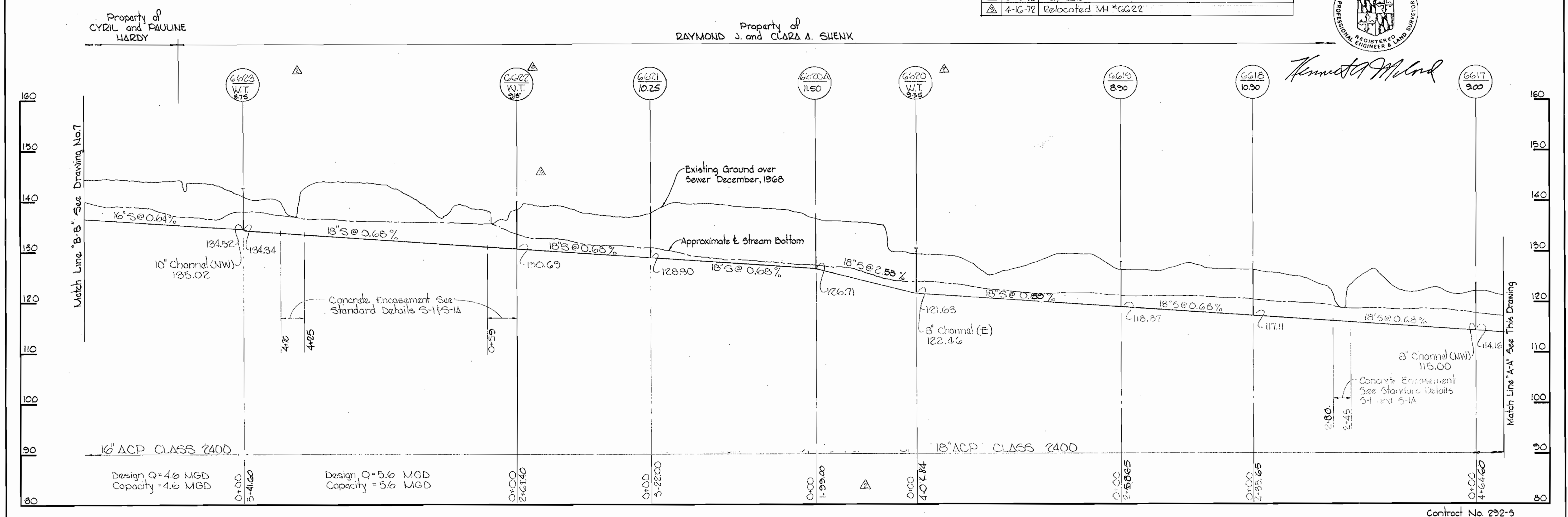
8-13-72	Up-date
No	Revisions

WHITMAN, REQUARDT & ASSOCIATES ENGINEERS 1304 ST. PAUL ST. BALTIMORE, MARYLAND	DEPARTMENT OF PUBLIC WORKS HOWARD COUNTY, MARYLAND DATE: 2-11-71 CHIEF-BUREAU OF WATER AND SEWER	CONTRACT NO. 292-S	PLAN OF SEWER MAINS	DEEP CREEK SECTION NO. 3	DRAWING NO. 5 OF 7	SCALE 1"=50' 46 SW 20 46 SW 30 45 SW 30 45 SW 20
					August 3, 1974	

W. O. 6021-2

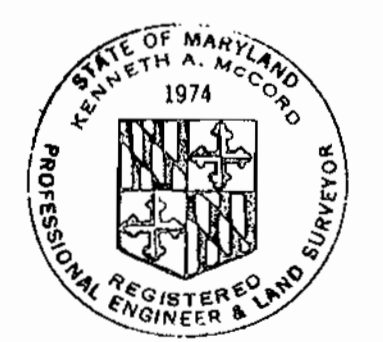
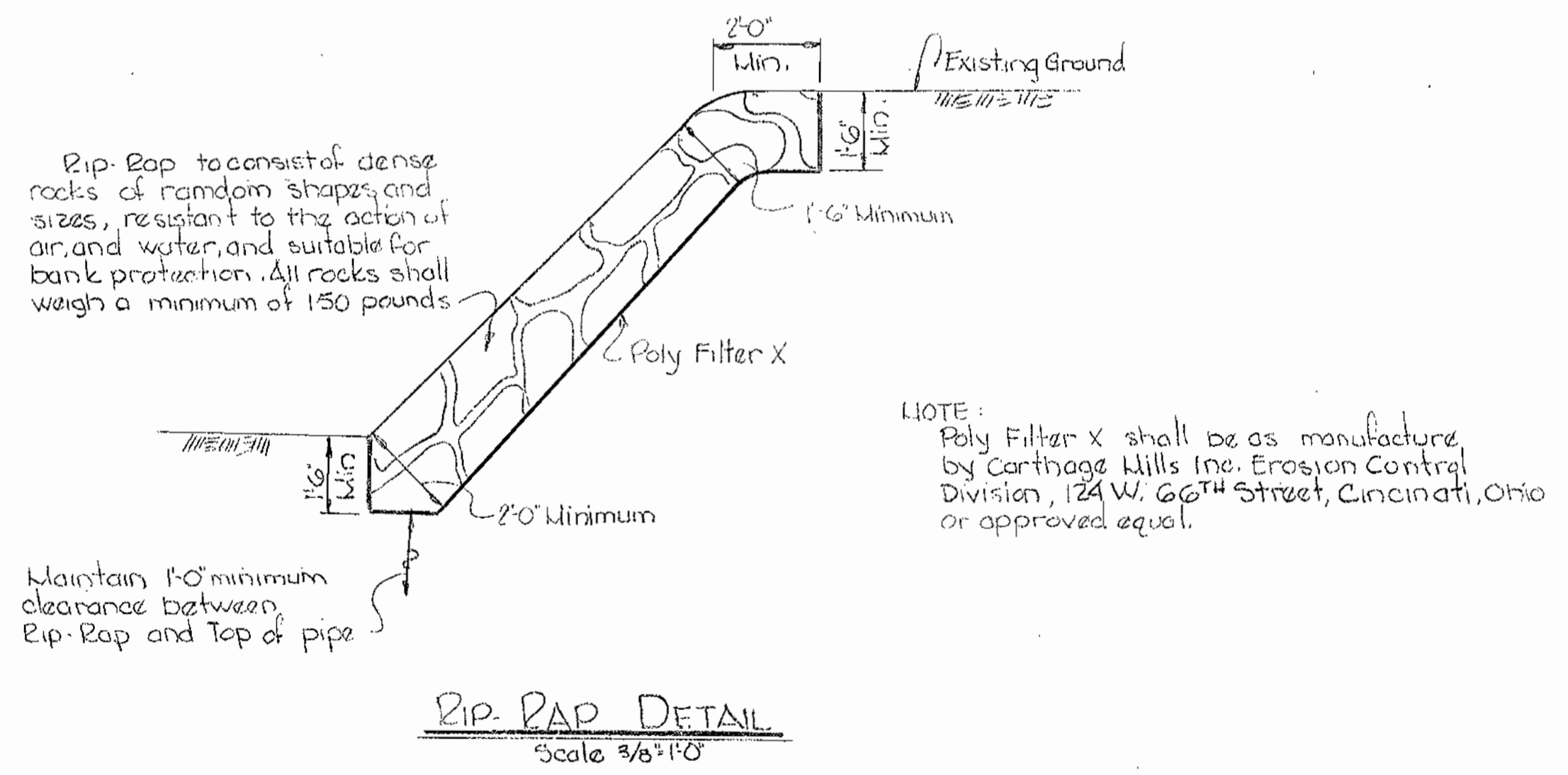
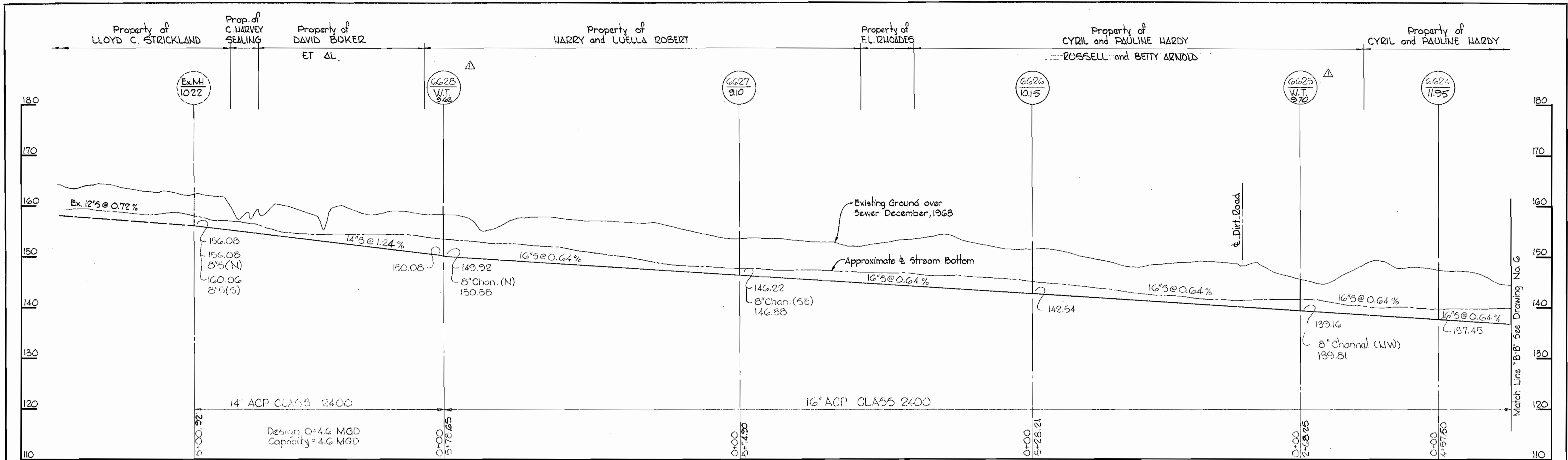


No.	Date	Revision
△	2-10-72	Realigned sewer between MH#466 and MH#GG12
△	3-13-72	Up date
△	4-16-72	Relocated MH#GG22



WHITMAN, REQUARDT & ASSOCIATES ENGINEERS 1304 ST. PAUL ST. BALTIMORE, MARYLAND	DEPARTMENT OF PUBLIC WORKS HOWARD COUNTY, MARYLAND DATE: 2-11-71 <i>W. O. Gilbert</i> CHIEF - BUREAU OF WATER AND SEWER	CONTRACT NO. 292-S	PROFILES OF SEWER MAINS	DEEP CREEK SECTION NO. 3	Contract No. 292-5
					DRAWING NO. 6 OF 7

MS 292-5/6



Kenneth A. McLeod

△	9-13-72	Update
No.	Date	Revisions

Deep Creek Section III
 Contract No. 292-S

WHITMAN, REQUARDT & ASSOCIATES ENGINEERS 1304 ST. PAUL ST. BALTIMORE, MARYLAND	DEPARTMENT OF PUBLIC WORKS HOWARD COUNTY, MARYLAND 2-11-74 <i>W. O. P. (Seal)</i> CHIEF-BUREAU OF WATER AND SEWER	CONTRACT NO. 292-S	PROFILES OF SEWER MAINS	DEEP CREEK SECTION NO.3	DRAWING NO. 7 OF 7	SCALE H=1"=100' V=1"=10'
					August 3, 1974	

W. O. 6021-2

WS 292-5/7