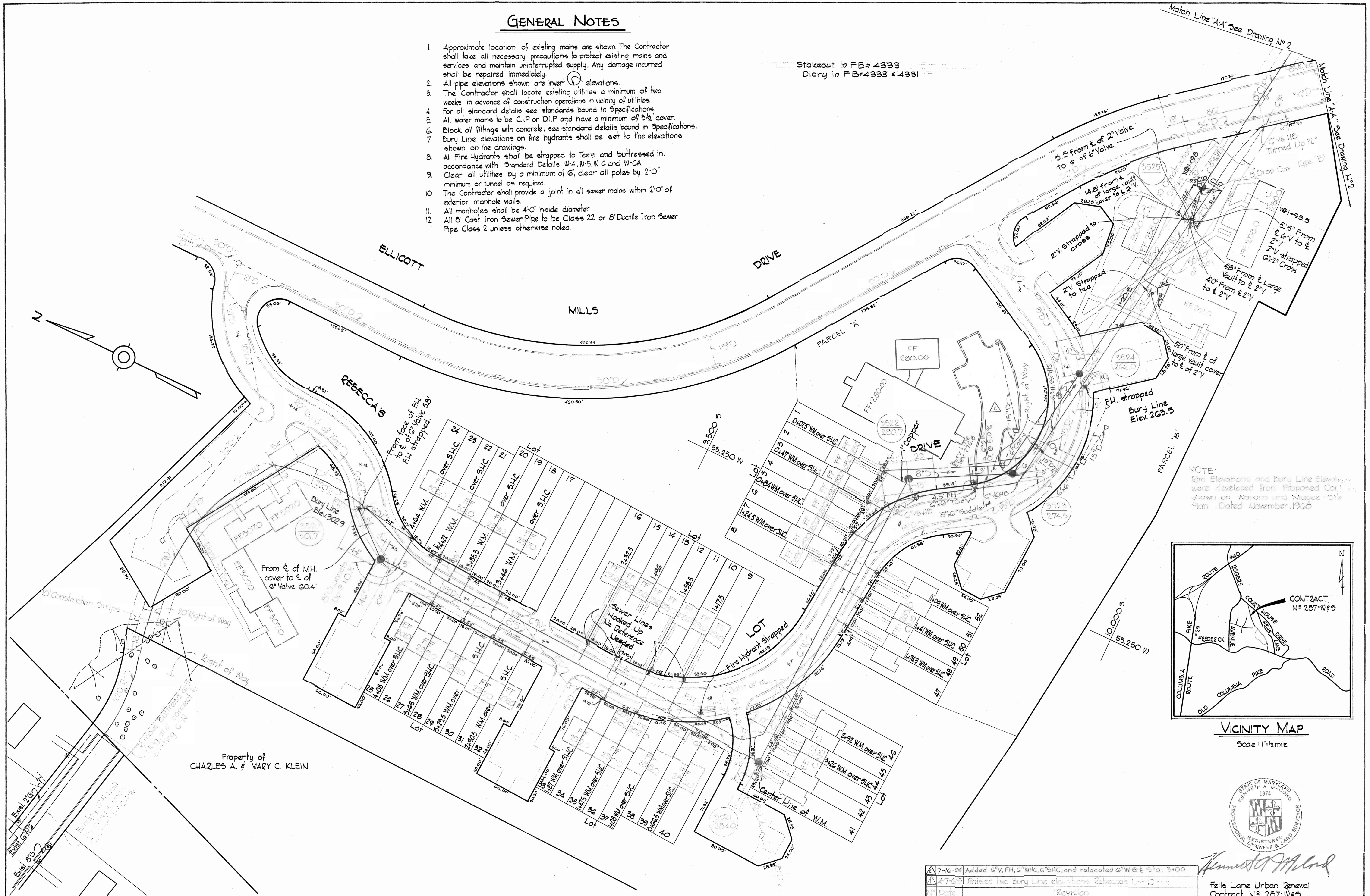


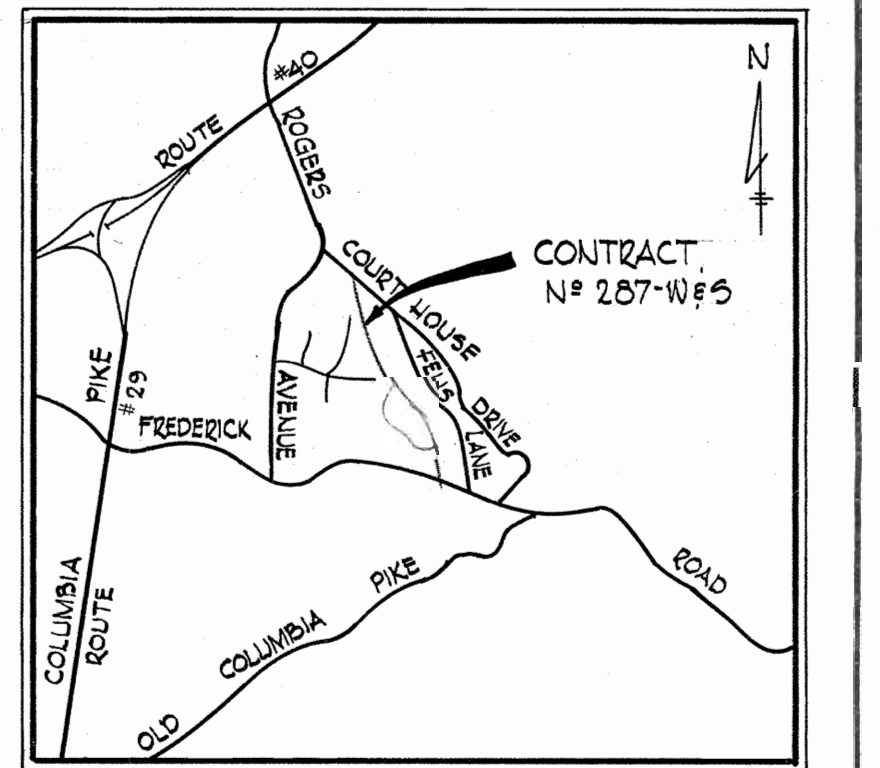
GENERAL NOTES

1. Approximate location of existing mains are shown. The Contractor shall take all necessary precautions to protect existing mains and services and maintain uninterrupted supply. Any damage incurred shall be repaired immediately.
2. All pipe elevations shown are invert elevations.
3. The Contractor shall locate existing utilities a minimum of two weeks in advance of construction operations in vicinity of utilities.
4. For all standard details see standards bound in Specifications.
5. All water mains to be C.I.P. or D.I.P. and have a minimum of 3 1/2' cover.
6. Block all fittings with concrete, see standard details bound in Specifications.
7. Bury Line elevations on fire hydrants shall be set to the elevations shown on the drawings.
8. All Fire Hydrants shall be strapped to Tees and buttressed in accordance with Standard Details W-4, W-5, W-6 and W-6A.
9. Clear all utilities by a minimum of 6', clear all poles by 2'-0" minimum or tunnel as required.
10. The Contractor shall provide a joint in all sewer mains within 2'-0" of exterior manhole walls.
11. All manholes shall be 4'-0" inside diameter.
12. All 8" Cast Iron Sewer Pipe to be Class 22 or 8" Ductile Iron Sewer Pipe Class 2 unless otherwise noted.

Stakeout in FB# 4333
Diary in FB# 4333 # 4331

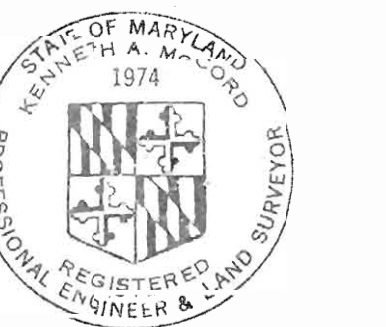


NOTE:
Elevations and Bury Line Elevations were developed from Proposed Contour shown on Walkway and Mages - Site Plan Dated November, 1968



VICINITY MAP

Scale: 1/4" = 1 mile



James A. Milard

7-16-64	Added 6" V, FH, G" WMC, G" SHC, and relocated 8" W@E 5' to 3'-0"
4-7-65	Raised two Bury Line elevations Rebecca Lot Drive
Date	Revision

Fells Lane Urban Renewal
Contract No. 287-W#5

WHITMAN, REQUARDT & ASSOCIATES
ENGINEERS
1304 ST. PAUL ST.
BALTIMORE, MARYLAND

HOWARD COUNTY METROPOLITAN COMMISSION
DATE: 11-4-69
W. O. FELLERS
CHIEF ENGINEER

CONTRACT NO. 287 W#5

PLAN OF
WATER & SEWER MAINS

ELLICOTT CITY SUB-DISTRICT

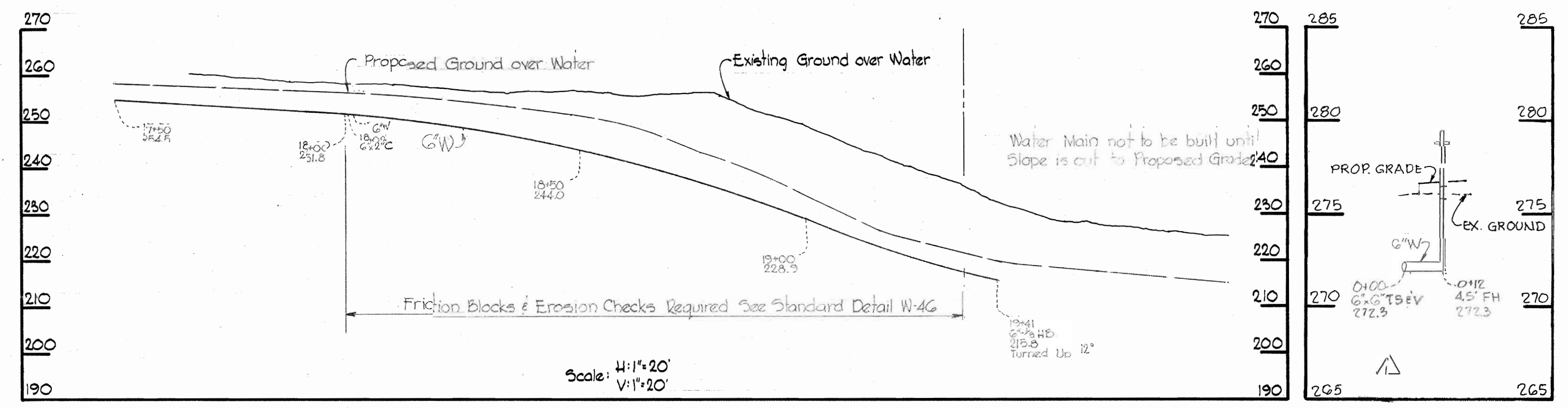
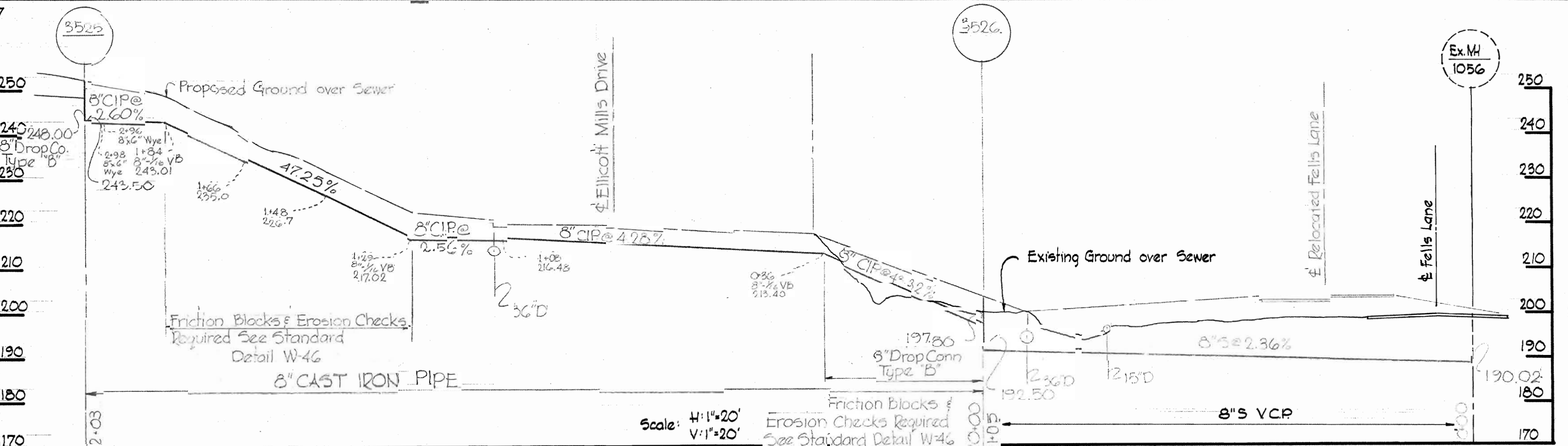
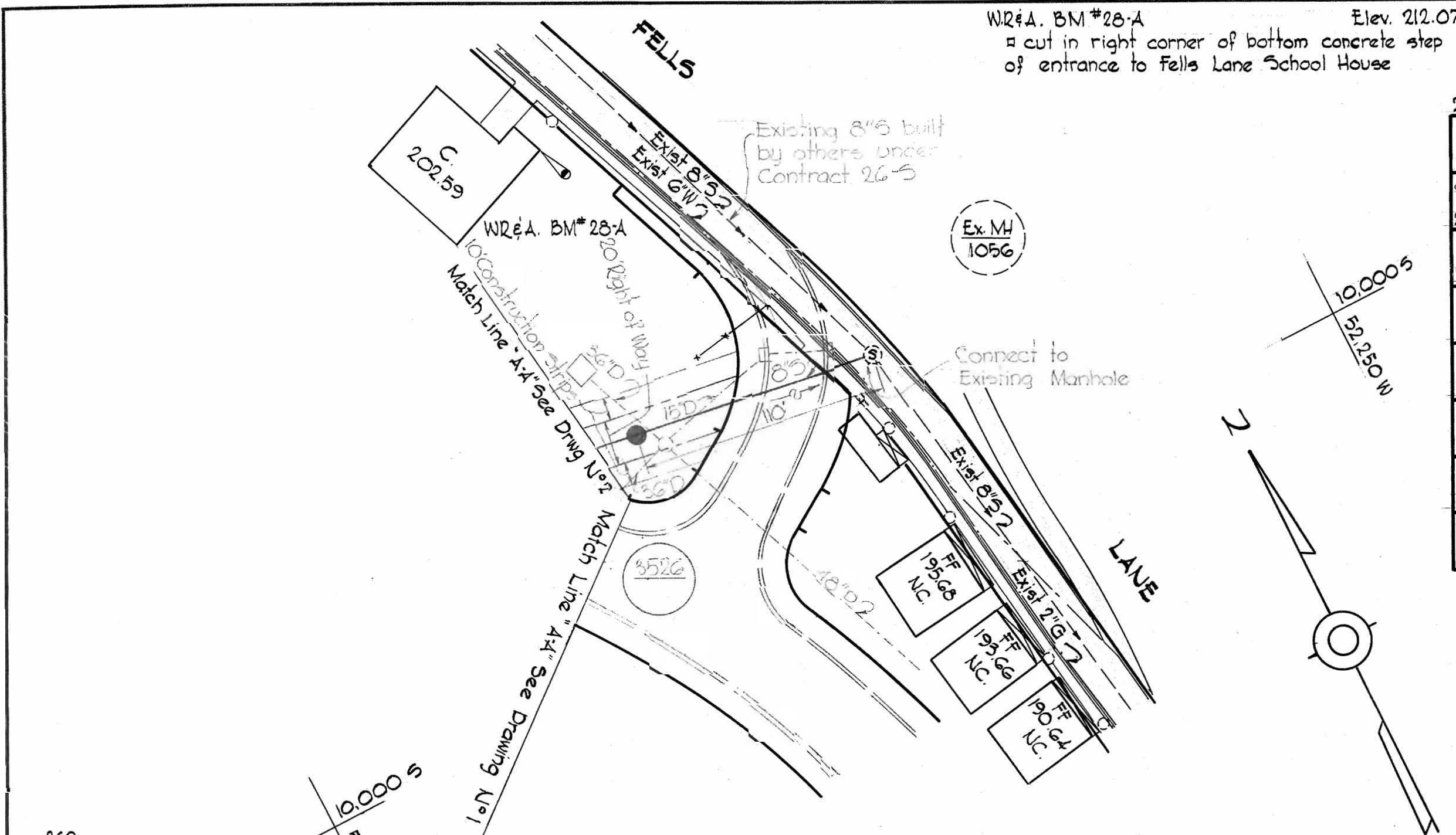
DRAWING NO. 1 OF 2
SCALE AS SHOWN

11-30-66
10-20-66
9-20-66

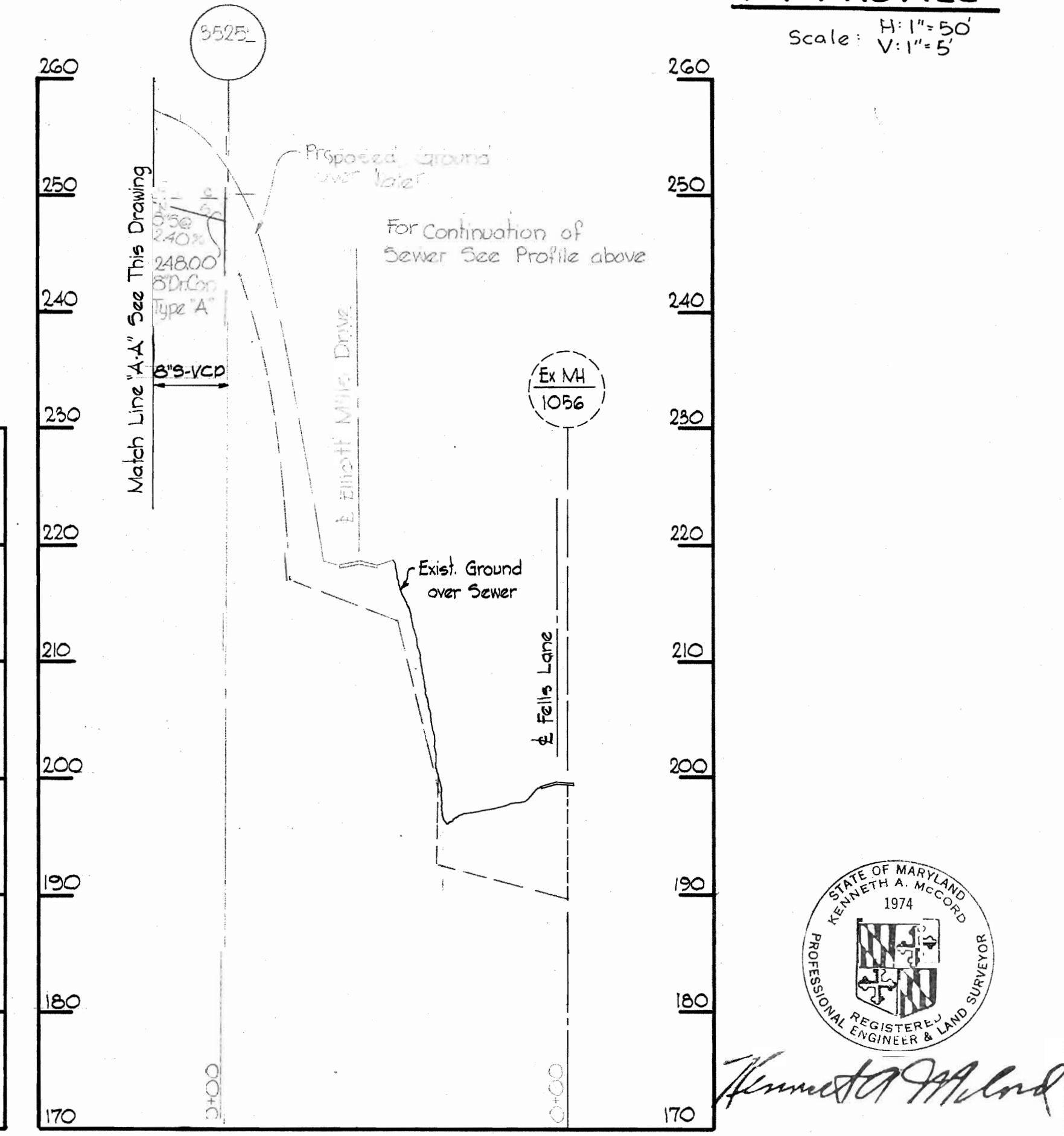
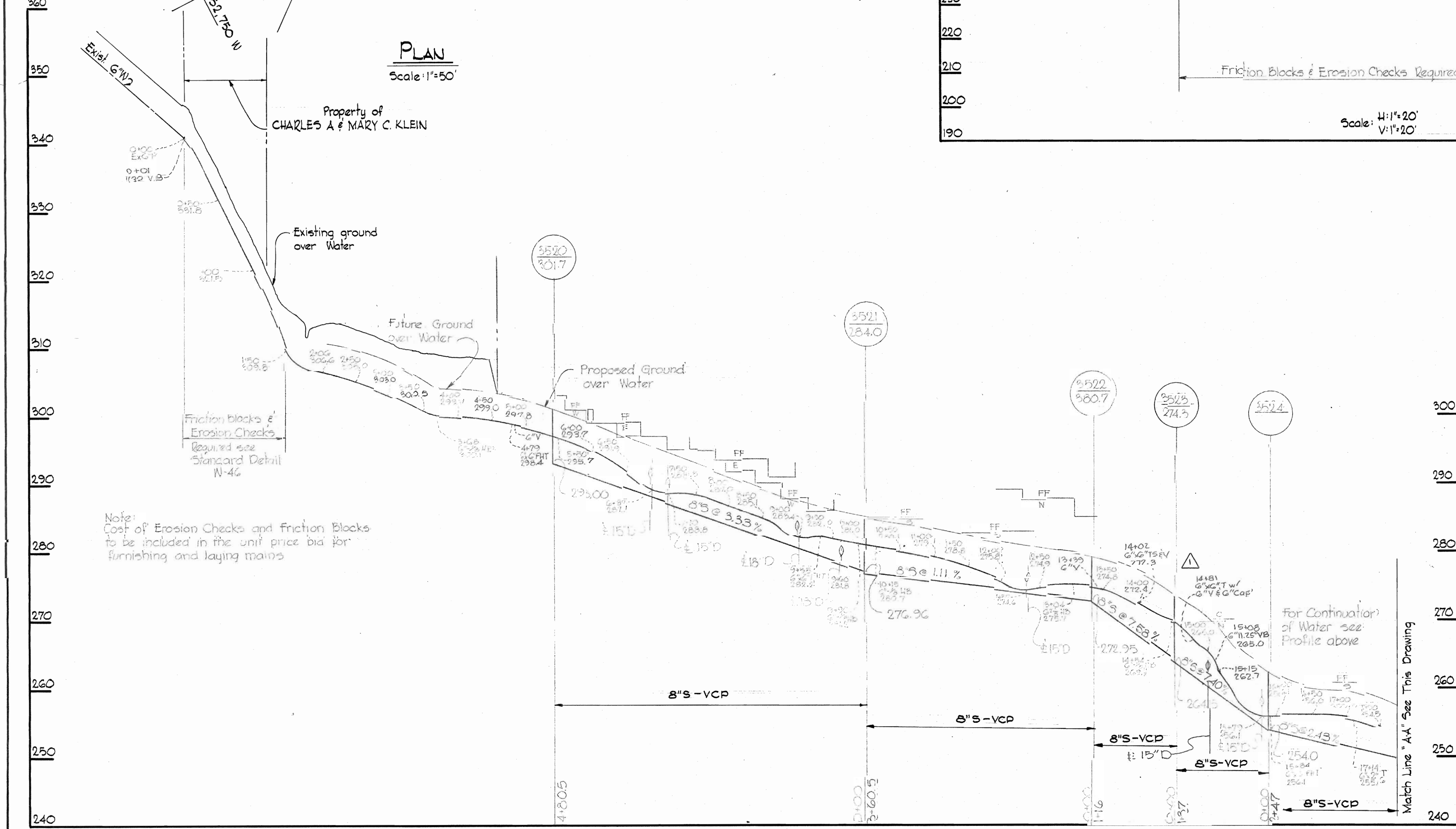
AS BUILT - NOV. 7, 1969

W. O. 6021-2

MS 287 W#5



FH PROFILE
Scale: H:1"=20'
V:1"=5'



7-12-68 Added G.W. FH, G.W.H.C. & S.H.C. and relocated G.W. & S.H.C. to 3+00
No. 287 Revision

WHITMAN, REQUARDT & ASSOCIATES
ENGINEERS
1304 ST. PAUL ST.
BALTIMORE, MARYLAND

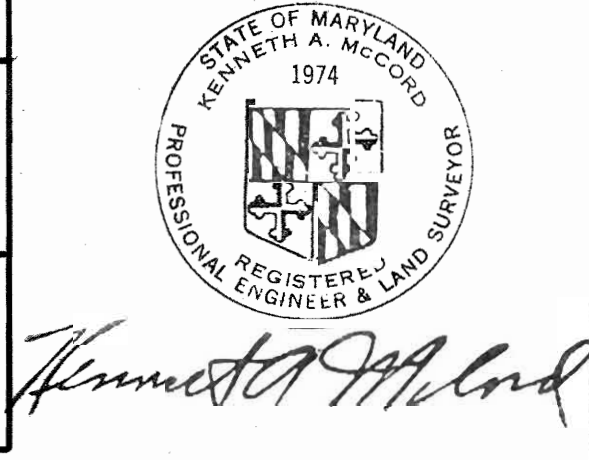
HOWARD COUNTY METROPOLITAN COMMISSION
11-7-68 *W O Falbert*
DATE CHIEF ENGINEER

CONTRACT NO. 287-W&S

PLAN OF WATER & SEWER MAINS

ELLICOTT CITY SUB-DISTRICT

DRAWING NO. 2 OF 2 SCALE AS SHOWN



Fells Lane Urban Renewal
Contract No. 287 W&S

W. O. 6021-2

AS BUILT Nov. 7, 1969

WS 287 W-S/2