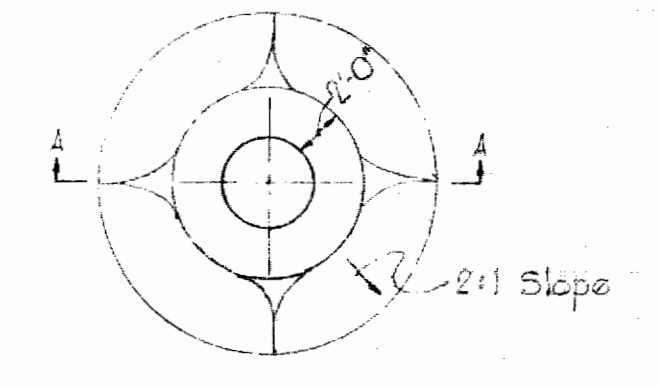
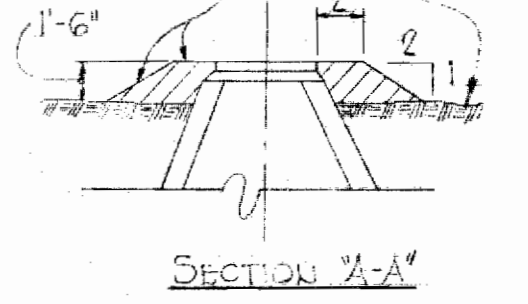


VICINITY MAP
Scale: 1"=200'



PLAN
Top Soil & Sod Existing Grade



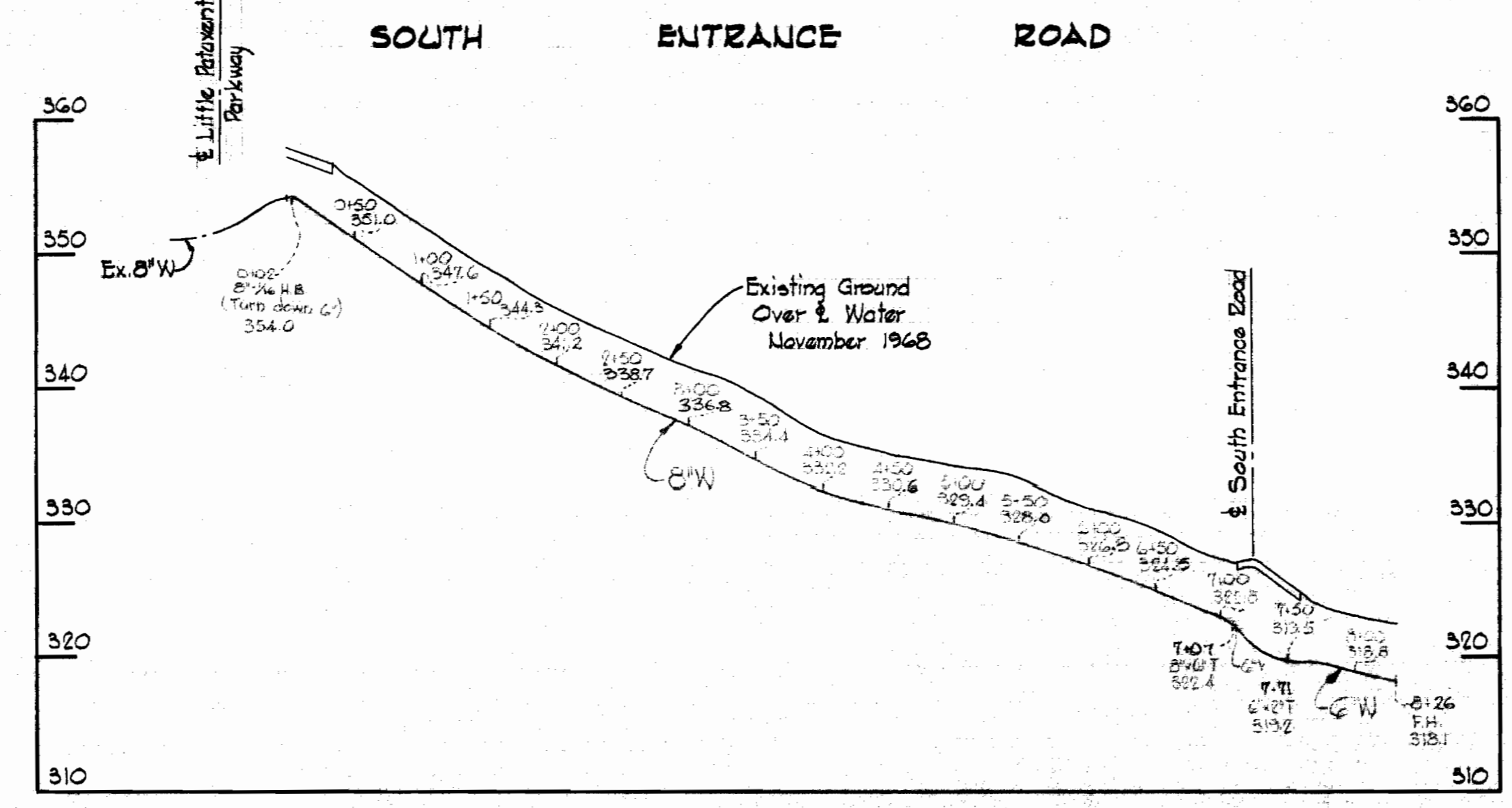
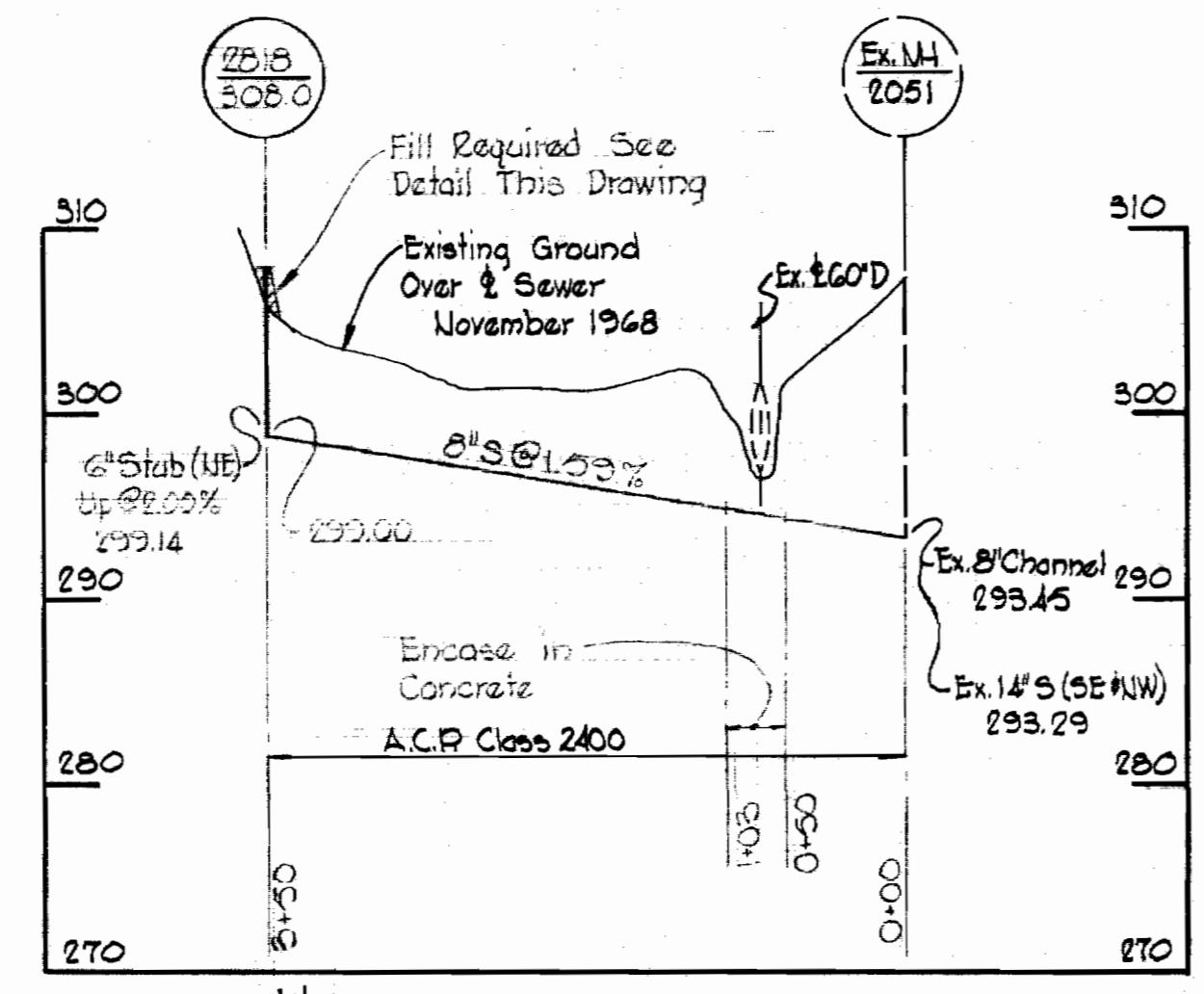
FILL AT MANHOLE

GENERAL NOTES

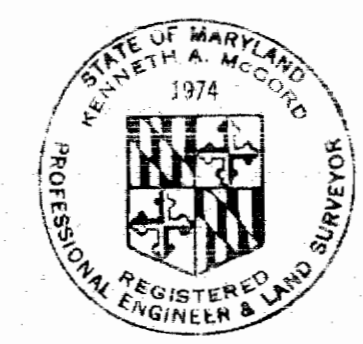
1. Approximate location of existing mains are shown. The Contractor shall take all necessary precautions to protect existing mains and services and maintain uninterrupted supply. Any damage incurred shall be repaired immediately.
2. All pipe elevations shown are invert elevations.
3. The Contractor shall locate existing utilities a minimum of two weeks in advance of construction operations in vicinity of utilities.
4. For all standard details see standards bound in Specifications.
5. All water mains to be C.I.P. or D.I.P. and have a minimum of 3 1/2' cover.
6. Block all fittings with concrete, see standard details bound in Specifications.
7. Clear all utilities by a minimum of 6', clear all poles by 2'-0" minimum or tunnel as required.
8. The Contractor shall provide a joint in all sewer mains within 2'-0" of exterior manhole walls.
9. All Fire Hydrants shall be buttressed in accordance with Standard Details.
10. All sewer mains shall be VCPX, CSPX or ACP Class 2400.

MATERIALS TO BE FURNISHED BY THE COMMISSION	
ITEM	QUANTITY
6" V	1
FH	1

QUANTITIES	
ITEM	QUANTITY
8" W	710'
6" W	120'
8" S	350'



PROFILES
Scale: Horz. 1"=100'
Vert. 1"=10'



Kenneth J. Melrod

W.R.#A. B.U.#32-A Elev. 304.38
R.R. Spike in base of 16' Oak
43' Lt. of Sta. 5+78 bet. P.I.
W/S 128 A & W/S 128 B

Dinner Theater
Contract No. C-286 W&S

WHITMAN, REQUARDT & ASSOCIATES
ENGINEERS
1304 ST. PAUL ST.
BALTIMORE, MARYLAND

HOWARD COUNTY METROPOLITAN COMMISSION
DATE: 11-18-68
W O Fallick
CHIEF ENGINEER

CONTRACT NO. C-286 W&S

PLAN & PROFILES OF
WATER & SEWER MAINS

COLUMBIA
TOWN CENTER
ELECTION DISTRICT CLARKSVILLE No.5

DRAWING NO. 1 OF 1	SCALE AS SHOWN	500-480 500-481 501-480 501-481
--------------------	----------------	--

S 286-W-5/1