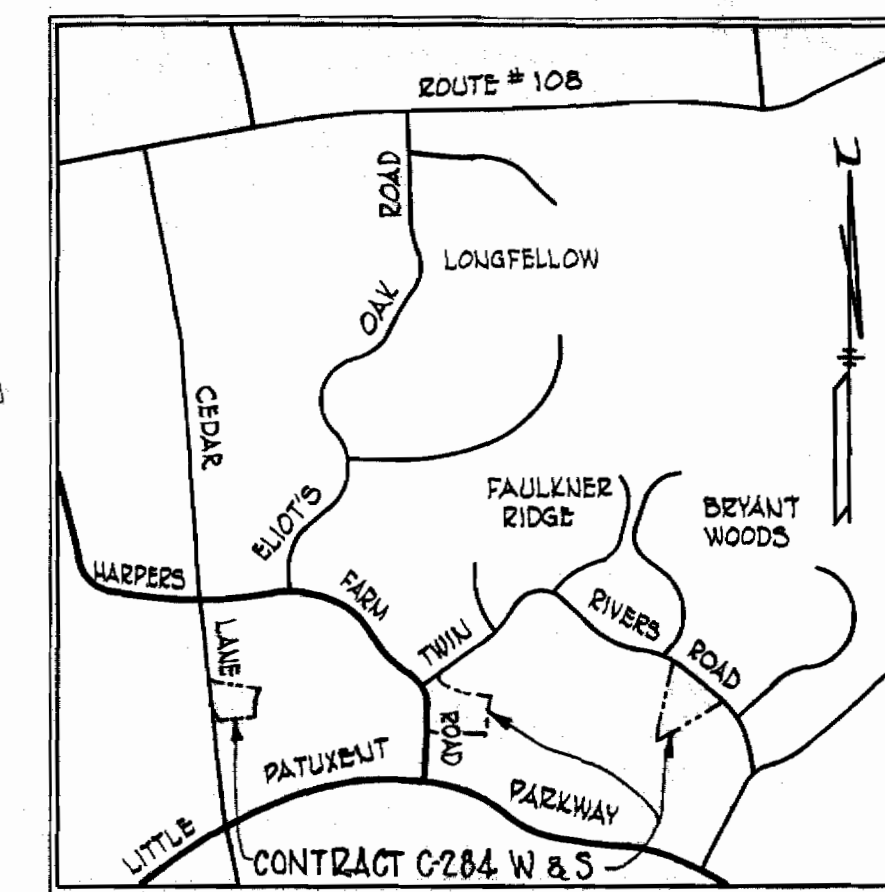


Notes:
 Rim elevations and bury line elevations for this contract were developed from proposed contours shown on Callers and Contractors' LEADY, HAY, LITTLE, BIRN, GIBSON, FLEMING and SITE PLANS, dated October 1969.



GENERAL NOTES

1. Approximate location of existing mains are shown. The Contractor shall take all necessary precautions to protect existing mains and services and maintain uninterrupted supply. Any damage incurred shall be repaired immediately.
 2. All pipe elevations shown are invert elevations.
 3. The Contractor shall locate existing utilities a minimum of two weeks in advance of construction operations in vicinity of utilities.
 4. For all standard details see standards bound in Specifications.
 5. All water mains to be C.I.P. or D.I.P. and have a minimum of 3/8' cover.
 6. Block all fittings with concrete, see standard details bound in Specifications.
 7. Bury line elevations on fire hydrants shall be set to elevations shown on drawings.
 8. All Fire Hydrant shall be strapped to tee and buttressed with concrete in accordance with Standard Detail W-4.
 9. Clear all utilities by a minimum of 6', clear all poles by 2'-0" minimum or tunnel as required.
 10. The Contractor shall provide a joint in all sewer mains within 2'-0" of exterior manhole walls.
 11. All sewer mains to be V.C.P., C.S.P.A. or A.C.P. Class 2400.
- All Horizontal and Vertical Controls are based on Maryland State Datum.

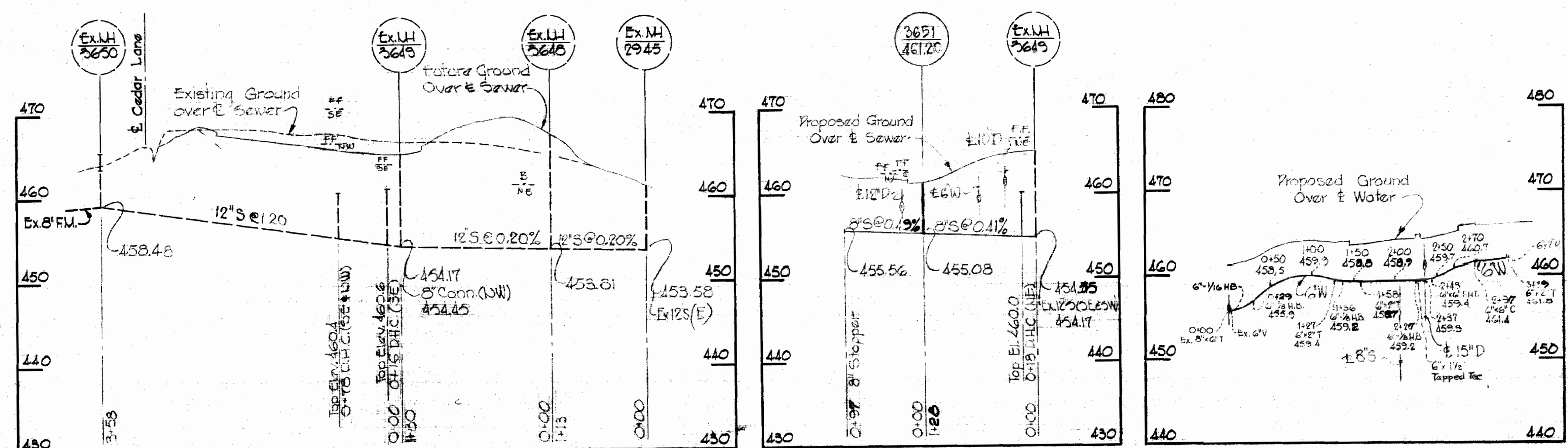
8"x6" Tees used for S.H.C.'s except where noted 8"x6" Y's.
 Stakeout & Diary in F.B. # 4421

QUANTITIES	
8" Sewer	1500
6" Water	1455



Howard A. McLeod

Site No. 1
 VHC
 Sec 3
 Area 4
 Lot No. 3
 Interfaith 1
 Contract C-284 W & S



WHITMAN, REQUARDT & ASSOCIATES
 ENGINEERS
 1304 ST. PAUL ST.
 BALTIMORE, MARYLAND

HOWARD COUNTY METROPOLITAN COMMISSION
 DATE: 11-16-69
 CHIEF ENGINEER

CONTRACT NO. C-284-W&S

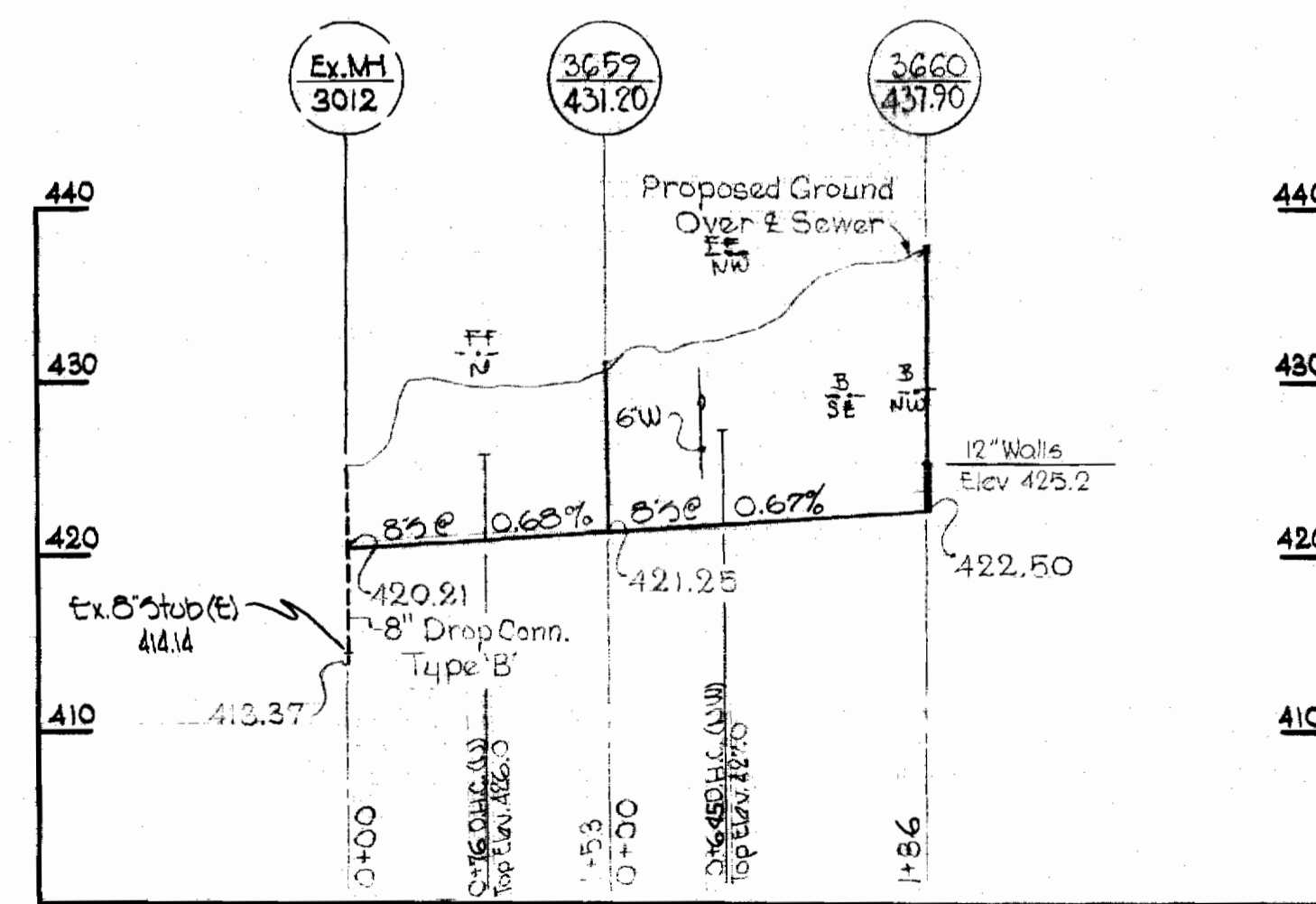
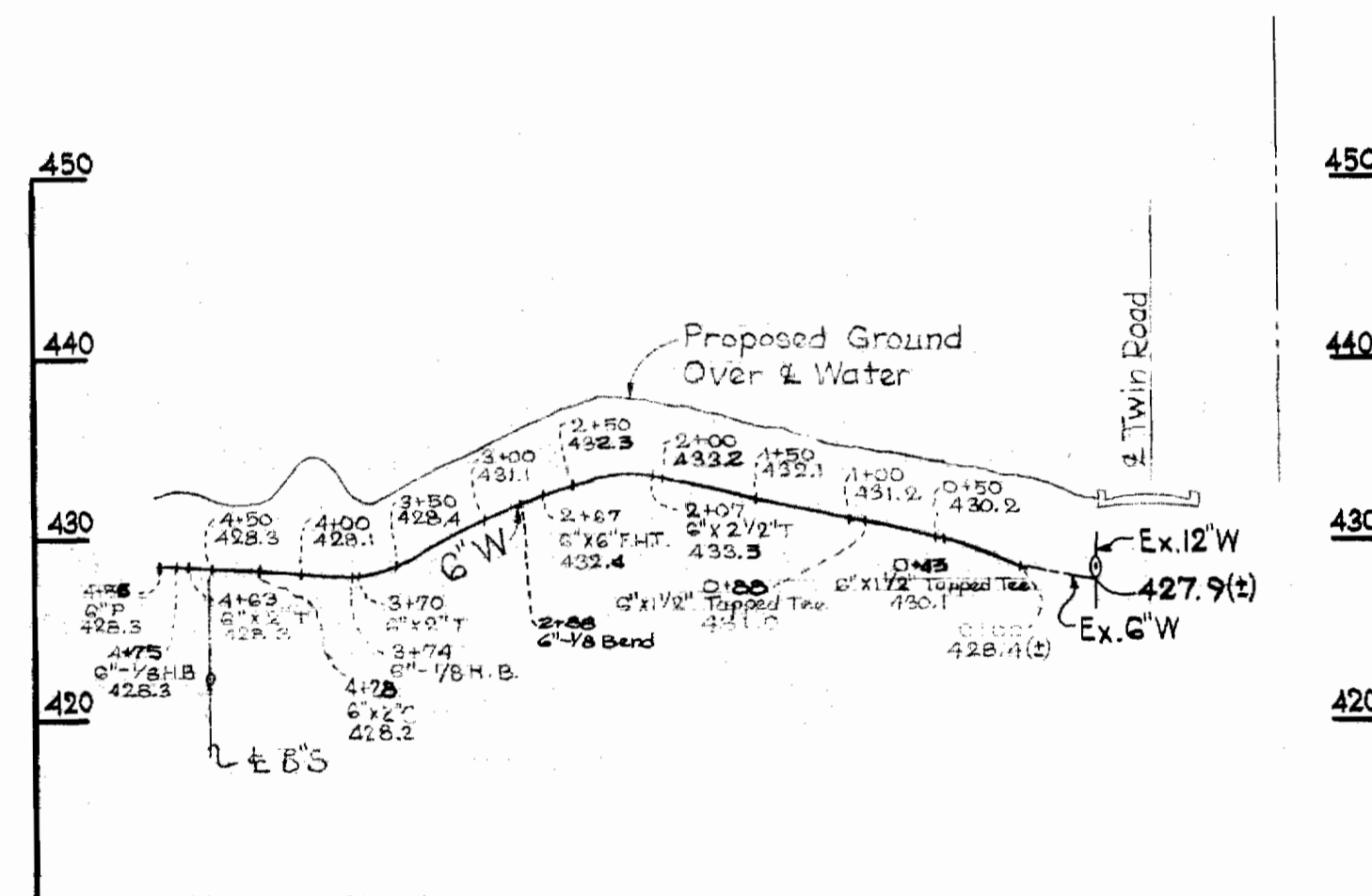
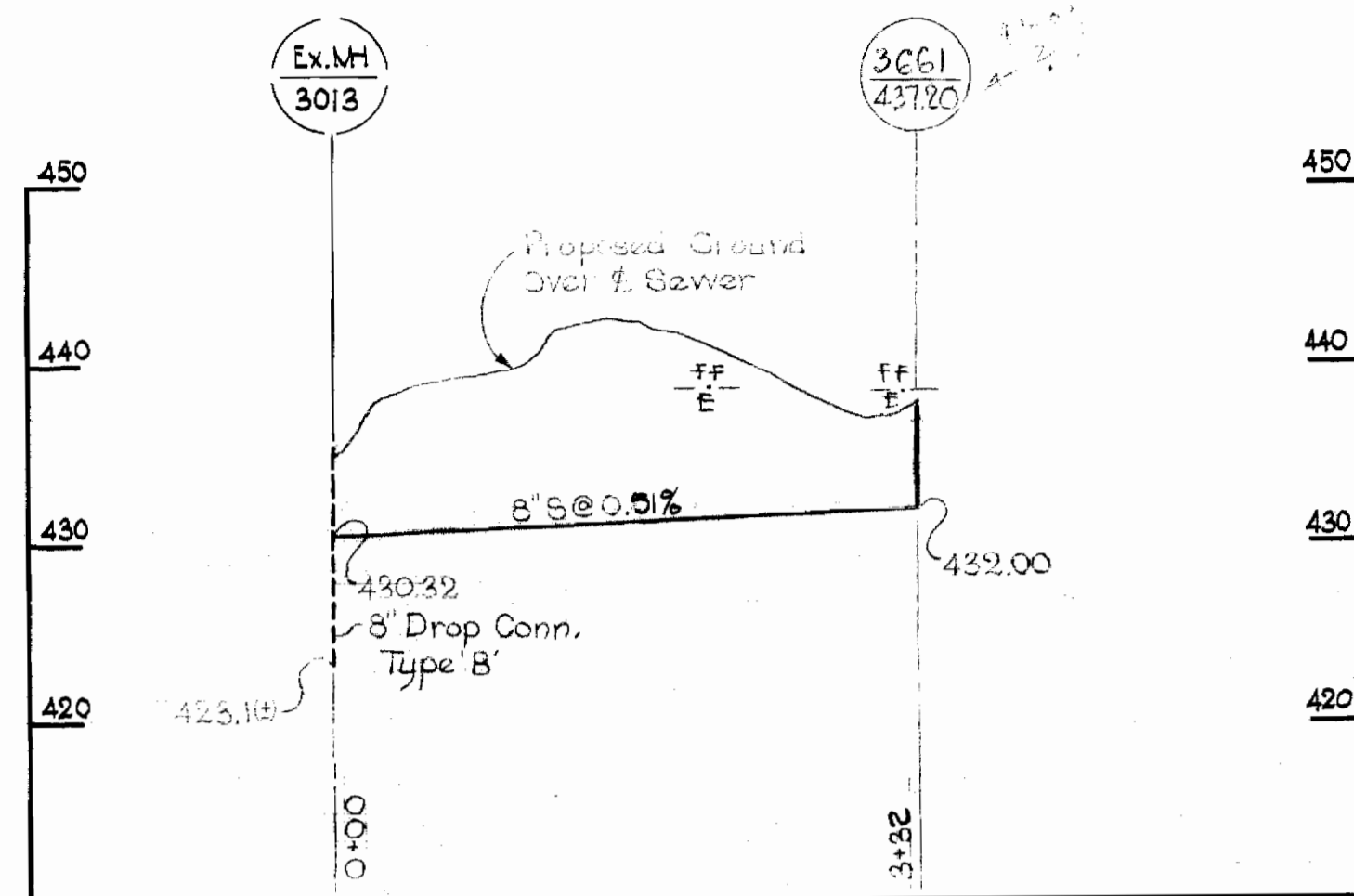
PLAN & PROFILES OF
 WATER & SEWER MAINS

COLUMBIA
 VILLAGE OF HARPER'S CHOICE
 ELECTION DISTRICT CLARKSVILLE No.5

DRAWING NO. 1 OF 3
 SCALE AS SHOWN
 504, 176

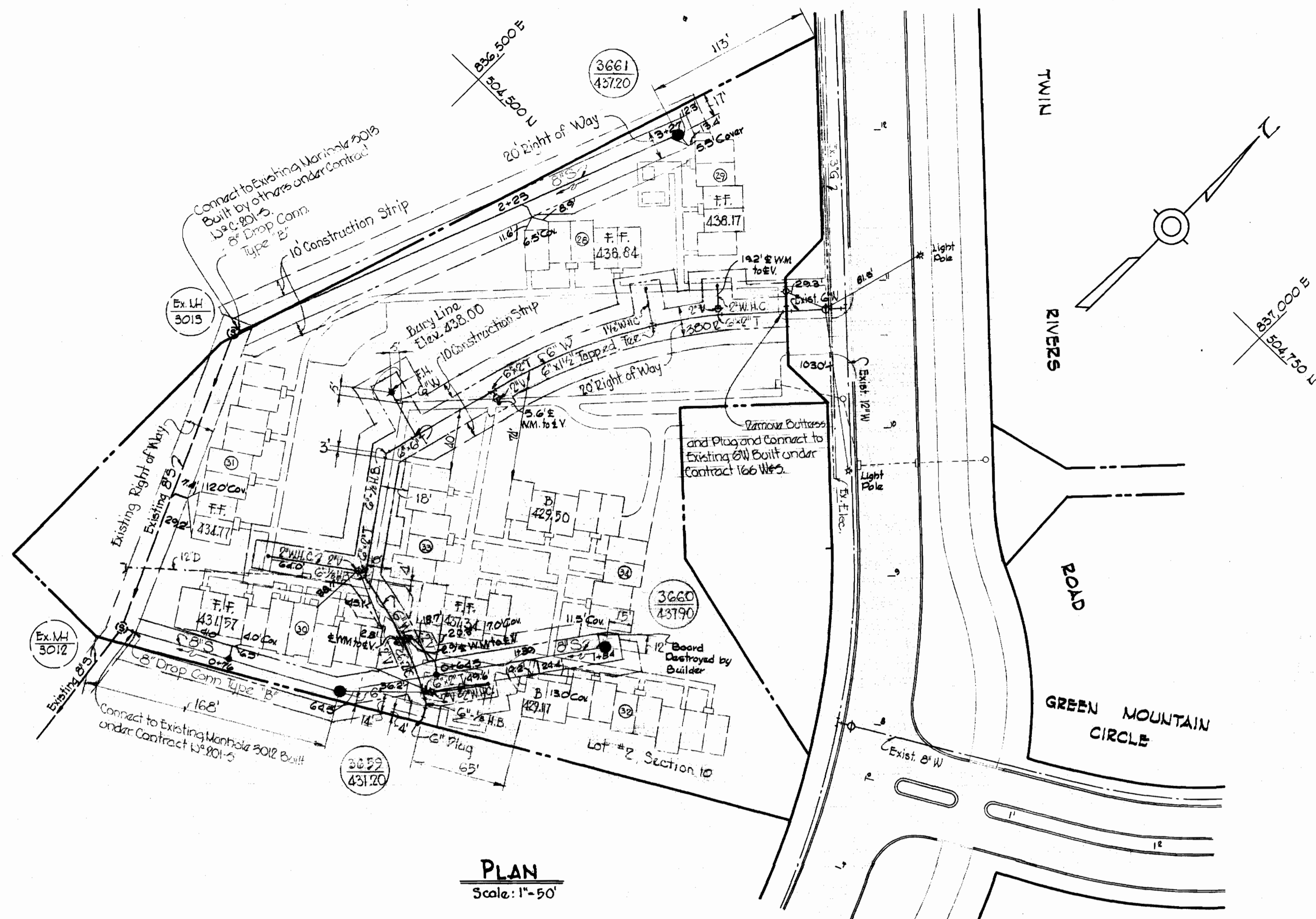
AS BUILT Nov 26, 1969

NS 284 W-S/1



PROFILES

Scale: Horiz. 1" = 100'
Vert. 1" = 10'



Kenneth A. Alford

Site No. 5
VWL
Sec 10
Area 4
Lot No. 2
Interfaith I
Contract C-284 W & S

WHITMAN, REQUARDT & ASSOCIATES
ENGINEERS
1304 ST. PAUL ST.
BALTIMORE, MARYLAND

HOWARD COUNTY METROPOLITAN COMMISSION
DATE: 11-11-61
CHIEF ENGINEER

CONTRACT NO. C-284-W&S

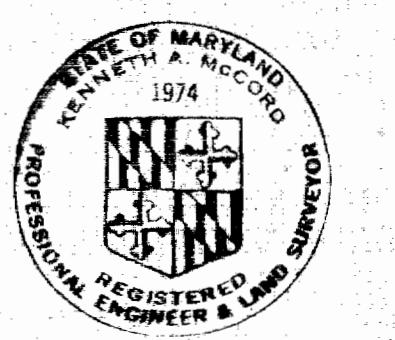
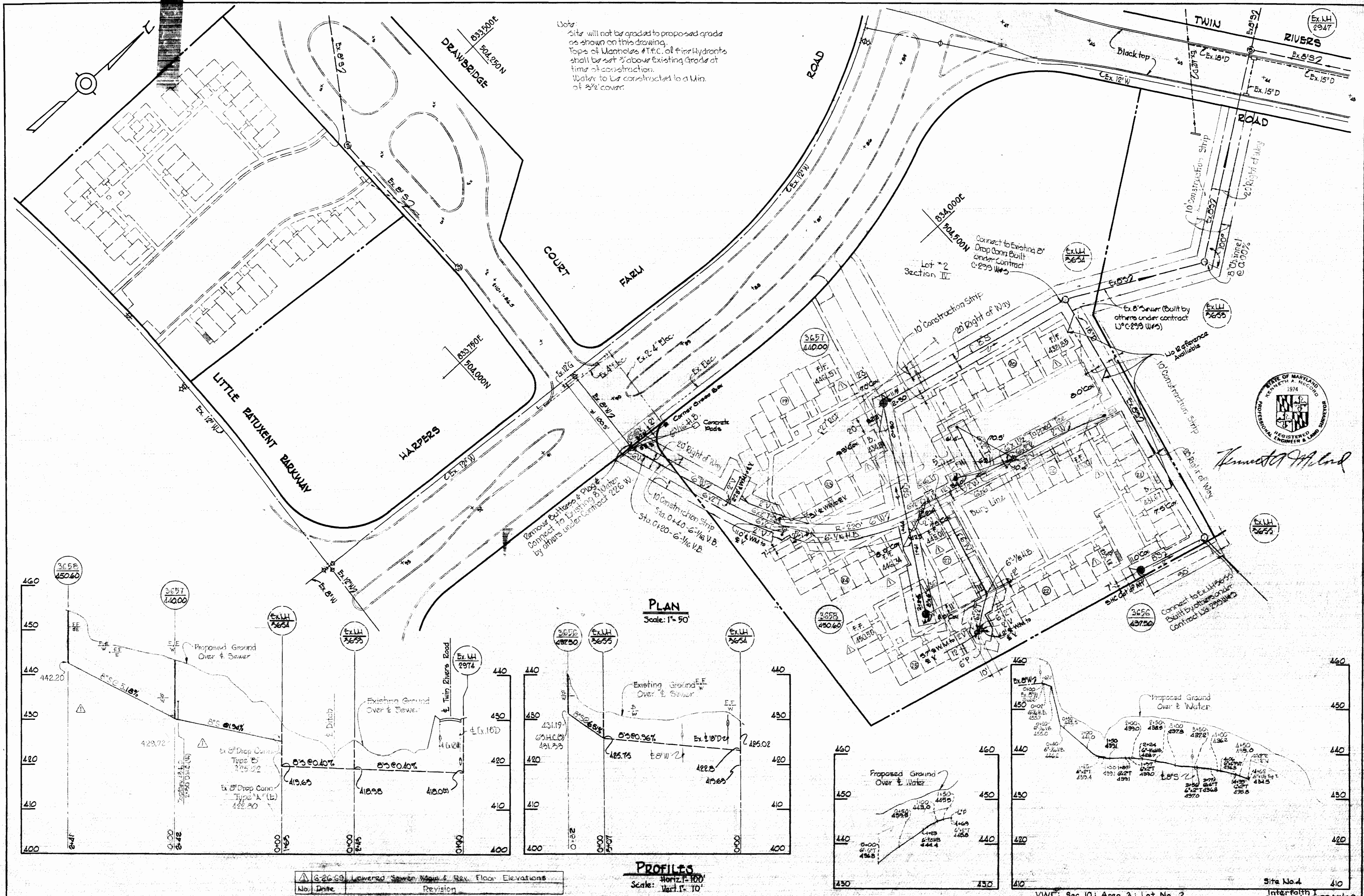
PLAN & PROFILES OF
WATER & SEWER MAINS

COLUMBIA
VILLAGE OF HARPER'S CHOICE
ELECTION DISTRICT CLARKSVILLE No. 5

DRAWING NO. 2 OF 3
SCALE AS SHOWN
504-479

WS 284 W-5/2

WS 284 W-5/3



Kenneth A. McCord

No.	Date	Revision
1	3-26-69	Lowered Sewer Main & Rev. Floor Elevations

WHITMAN, REQUARDT & ASSOCIATES ENGINEERS 1304 ST. PAUL ST. BALTIMORE, MARYLAND	HOWARD COUNTY METROPOLITAN COMMISSION DATE: 3-26-69 CHIEF ENGINEER	CONTRACT NO. C-284-W85	PLAN & PROFILES OF WATER & SEWER MAINS	COLUMBIA VILLAGE OF HARPER'S CHOICE ELECTION DISTRICT CLARKSVILLE No. 5	DRAWING NO. 3 OF 3	SCALE AS SHOWN
					Site No. 4 Interfaith Contract C-284-W85 904-477	

W.O. 6023-2

AS BUILT Nov 26, 1969