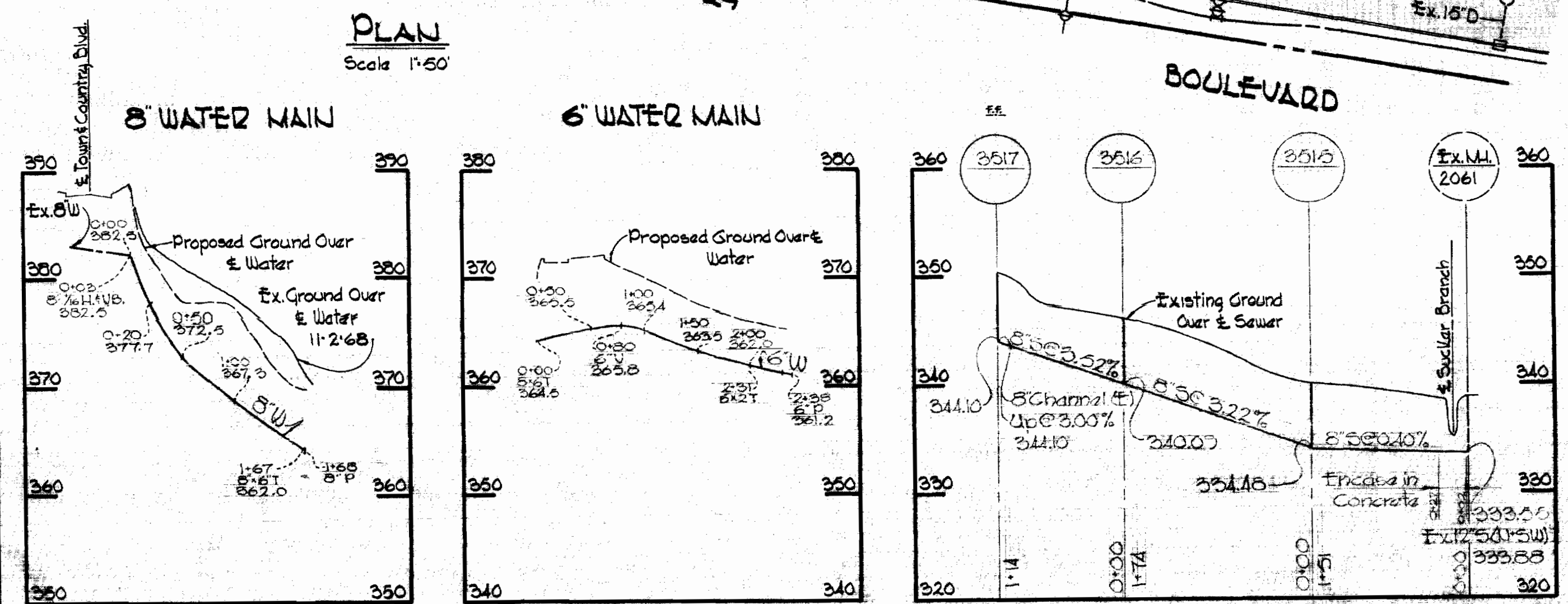
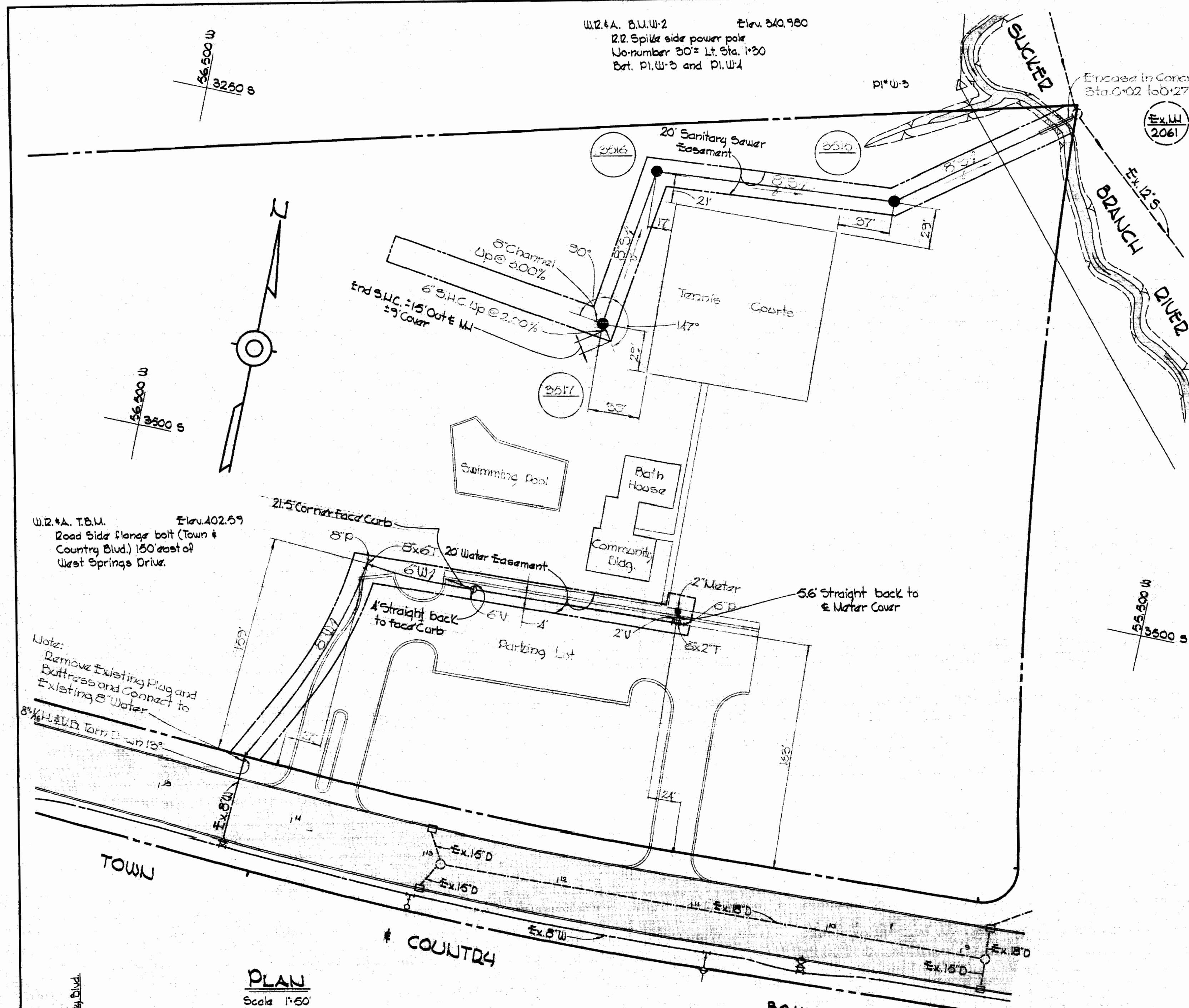


VICINITY MAP
Scale: 1" = 2000'

GENERAL NOTES

1. Approximate location of existing mains are shown. The Contractor shall take all necessary precautions to protect existing mains and services and maintain uninterrupted supply. Any damage incurred shall be repaired immediately.
2. All pipe elevations shown are invert elevations.
3. The Contractor shall locate existing utilities a minimum of two weeks in advance of construction operations in vicinity of utilities.
4. For all standard details see standards bound in Specifications.
5. All water mains to be C.I.P. or D.I.P. and have a minimum of 3/2' cover.
6. Block all fittings with concrete, see standards bound in Specifications.
7. Bury line elevations on fire hydrants shall be set to elevations shown on drawing or as directed by the Engineer in the field.
8. All fire hydrants shall be strapped in accordance with Standard Details W-5, W-6 and W-6A.
9. Cost of strapping fire hydrants and valves to trees to be included in the unit price bid for furnishing and laying water mains.
10. All fire hydrants shall be buttressed with concrete in accordance with Standard Detail W-4.
11. Clear all utilities by a minimum of 6', clear all poles by 2'-0" minimum or tunnel as required.
12. The Contractor shall provide a joint in all sewer mains with 2'-0" of exterior manhole walls.
13. All manholes shall be 4'-0" inside diameter.

| QUANTITIES | |
|------------|------|
| 8" Sewer | 441' |
| 8" Water | 168' |
| 6" Water | 235' |



| No. | Date | Revision |
|-----|----------|---------------------------------------------|
| 1 | 11-11-68 | Revised elevations of 8" and 6" Water Mains |



Kenneth A. McCord
Town & Country West Section U-4
Contract U-280 W&S

| | | | | | | |
|----------------------------------------------------------------------------------------------------|---------------------------------------------------------------------------------------------------------------|----------------------|--------------------------------------------|------------------------------------------|--------------------------------------|--------------|
| WHITMAN, REQUARDT & ASSOCIATES ENGINEERS 1304 ST. PAUL ST. BALTIMORE, MARYLAND | HOWARD COUNTY METROPOLITAN COMMISSION DATE: 10-28-68 Chief Engineer: <i>W. O. P. [Signature]</i> | CONTRACT NO. 280 W&S | PLAN AND PROFILE OF WATER & SEWER MAINS | ELECTION DISTRICT ELLICOTT CITY NO. 2 | DRAWING NO. 1 OF 1 SCALE AS SHOWN | 4 5/8" x 11" |
|----------------------------------------------------------------------------------------------------|---------------------------------------------------------------------------------------------------------------|----------------------|--------------------------------------------|------------------------------------------|--------------------------------------|--------------|

280-511