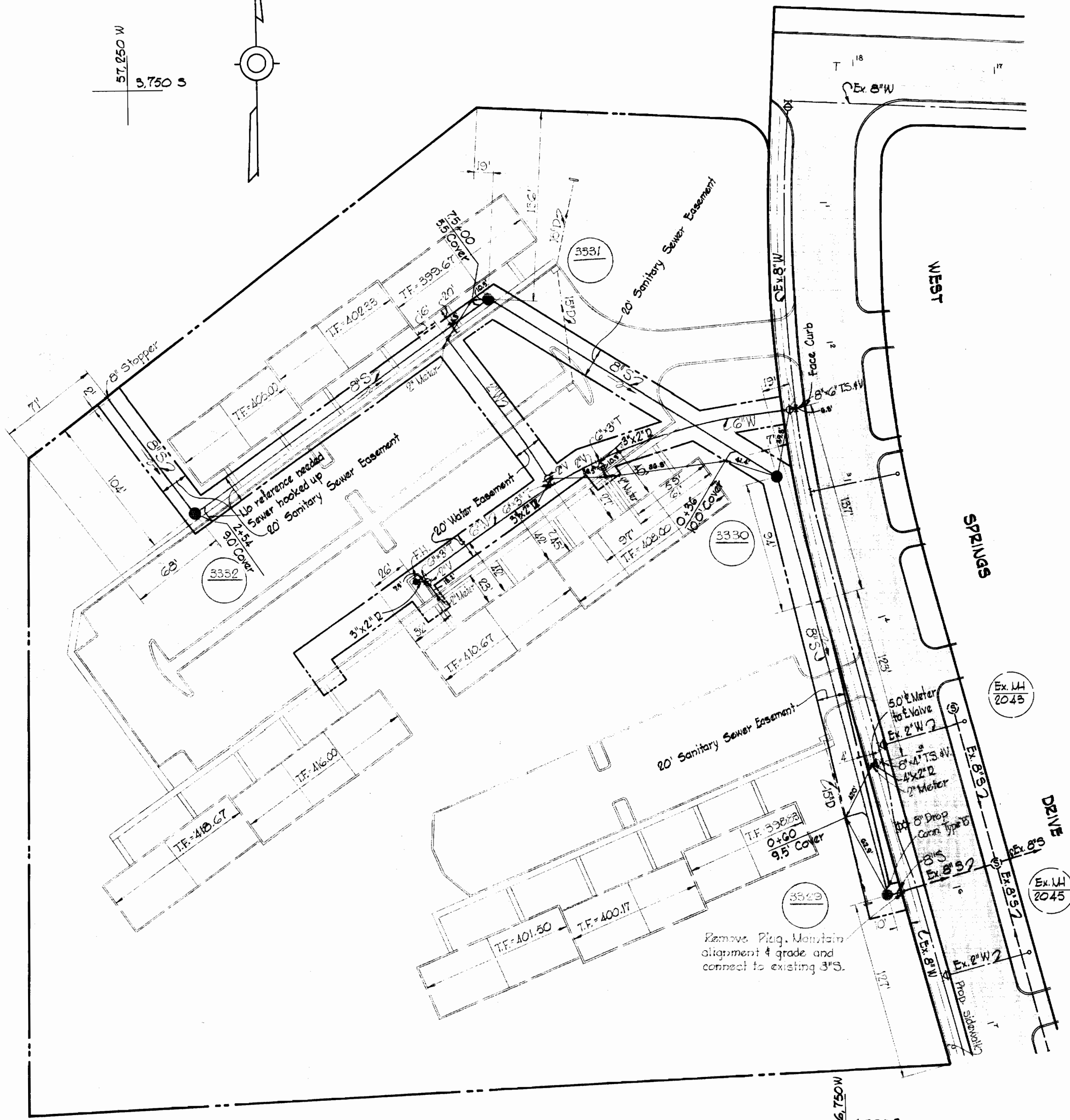
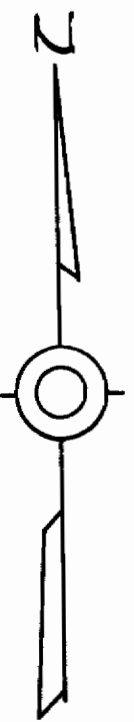


W.P.A. B.W. # 20-B Elev. 353.56  
 P.R. Spike in G & E Pole  
 #203436 on East side  
 Rogers Ave. 20.00' North of  
 Route #40

TOWN & COUNTRY  
 BOULEVARD

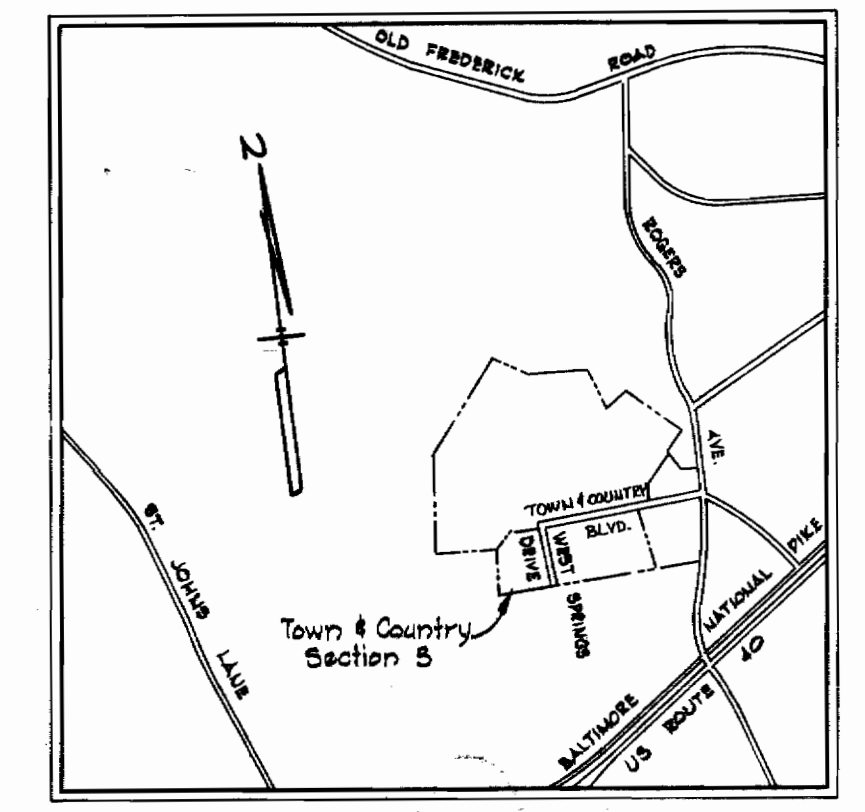
57,250 W  
 5,750 S



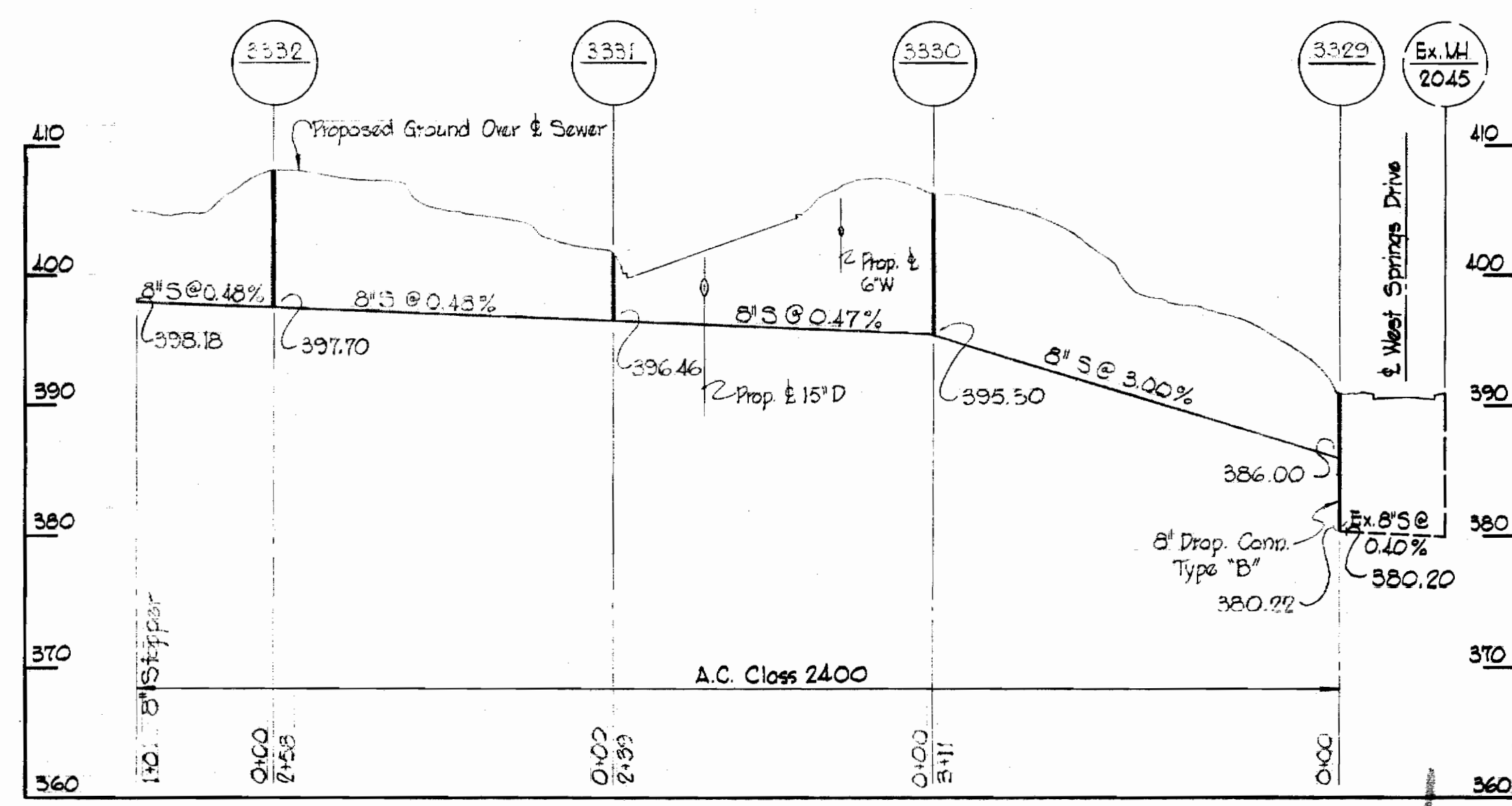
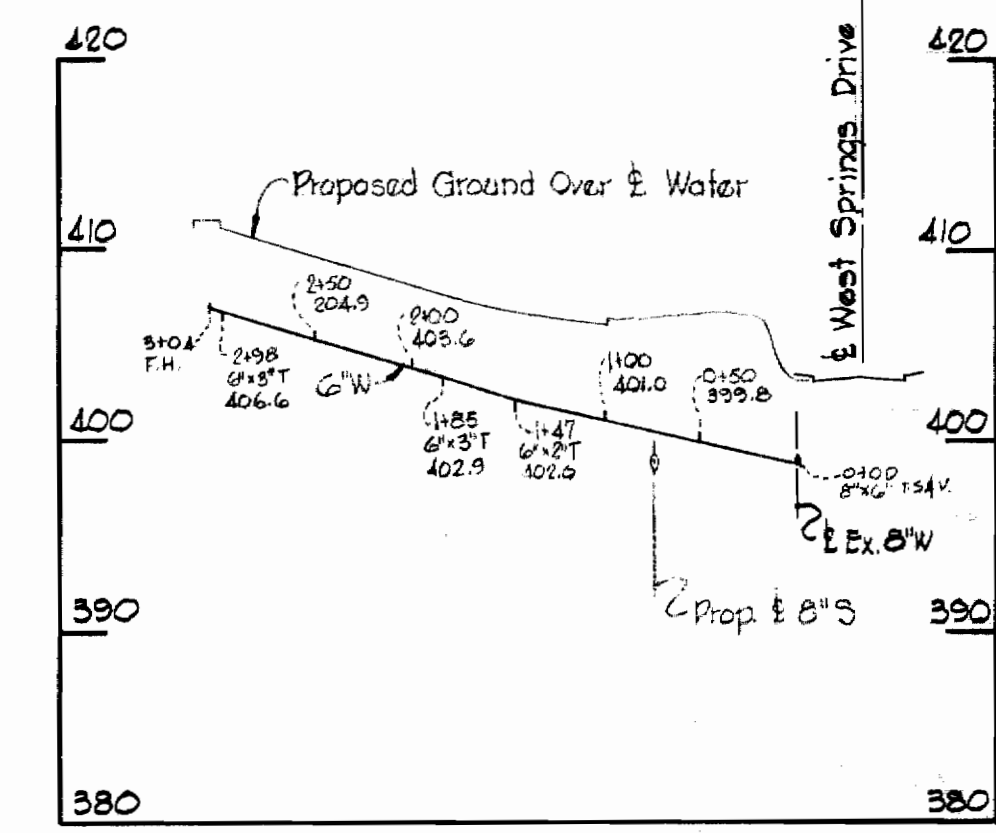
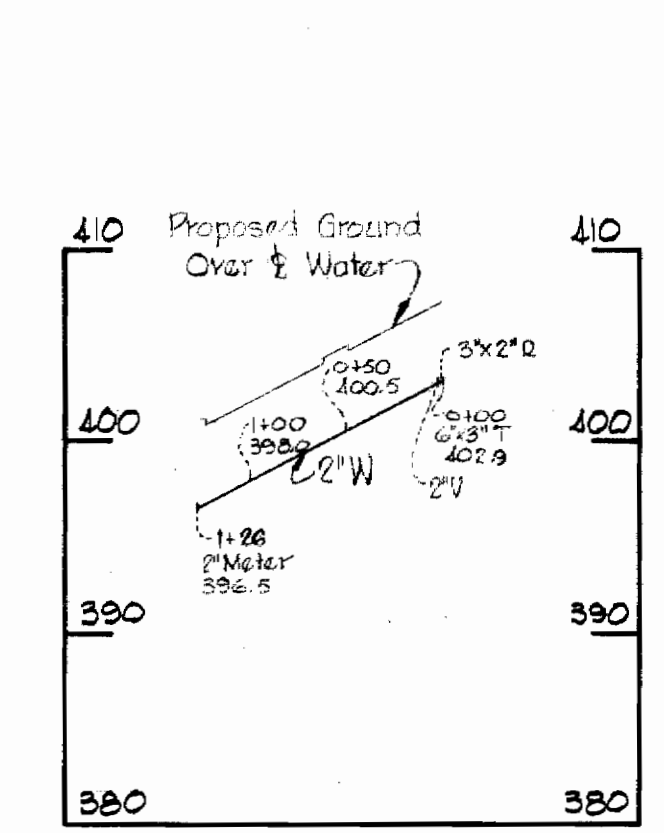
**PLAN**  
 Scale: 1" = 50'

**GENERAL NOTES**

1. Approximate location of existing mains are shown. The Contractor shall take all necessary to protect existing mains and services and maintain uninterrupted supply. Any damage incurred shall be repaired immediately.
2. All pipe elevations shown are invert  $\phi$  elevations.
3. The Contractor shall locate existing utilities a minimum of two weeks in advance of construction operations in vicinity of utilities.
4. For all standard details see standards bound in Specifications.
5. All water mains to be C.I.P. or D.I.P. and have a minimum of 3' cover.
6. Block all fittings with concrete, see standards bound in Specifications.
7. Bury line elevations on fire hydrants shall be set to elevations shown on drawing or as directed by the Engineer in the field.
8. All fire hydrants shall be strapped in accordance with Standard Details W-5, W-6 and W-6A.
9. Cost of strapping fire hydrants and valves to tees to be included in the unit price bid for furnishing and laying of water mains.
10. All fire hydrants shall be buttressed with concrete in accordance with standard Detail W-4.
11. Clear all utilities by a minimum of 6', clear all poles by 2'-0" minimum or tunnel as required.
12. The Contractor shall provide a joint in all sewer mains within 2'-0" of exterior manhole walls.
13. All manholes shall be 4'-0" inside diameter.

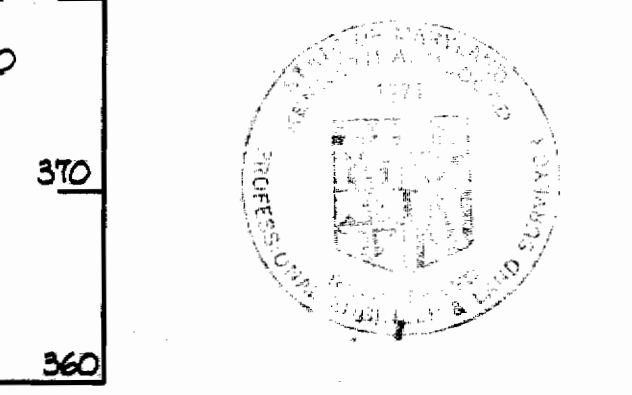


**VICINITY MAP**  
 Scale: 1" = 2000'



**PROFILES**

Scale: Horiz. 1" = 100'  
 Vert. 1" = 10' Stakeout and Diary in FB #4257



*Handwritten signature*  
 Town & Country Apts. Section 3  
 Contract No. 272 W43

WHITMAN, REQUARDT & ASSOCIATES  
 ENGINEERS  
 1304 ST. PAUL ST.  
 BALTIMORE, MARYLAND

HOWARD COUNTY METROPOLITAN COMMISSION  
 8-22-68  
 W.O. Pelletier  
 CHIEF ENGINEER

CONTRACT NO. 272 W & S

PLAN AND PROFILE OF  
 WATER & SEWER MAINS

ELECTION DISTRICT  
 ELLICOTT CITY NO. 2

DRAWING NO. 1 OF 1	SCALE AS SHOWN	4 SW 39
		4 SW 38
		5 SW 38
		5 SW 39

AS BUILT OCTOBER 25, 1968

272-WS/1  
 WS