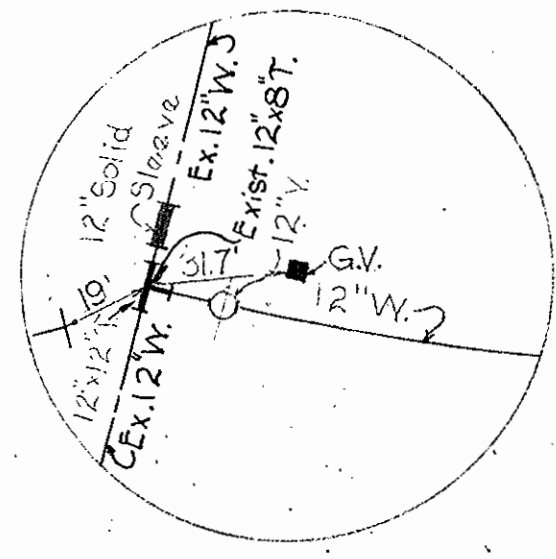
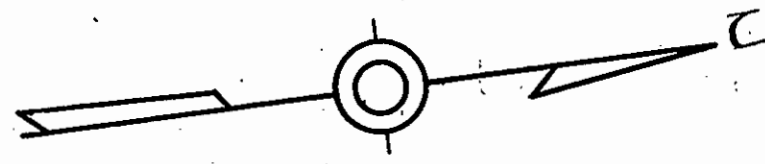


V. R.E. B.M.#1 Elev. 295.26
 R.R Spike in Power Pole # 283260 40' Right of
 Sta. 8+18 at Corner of Stephens Road and
 Whiskey Bottom Road between P.I.#1 and P.I.#2

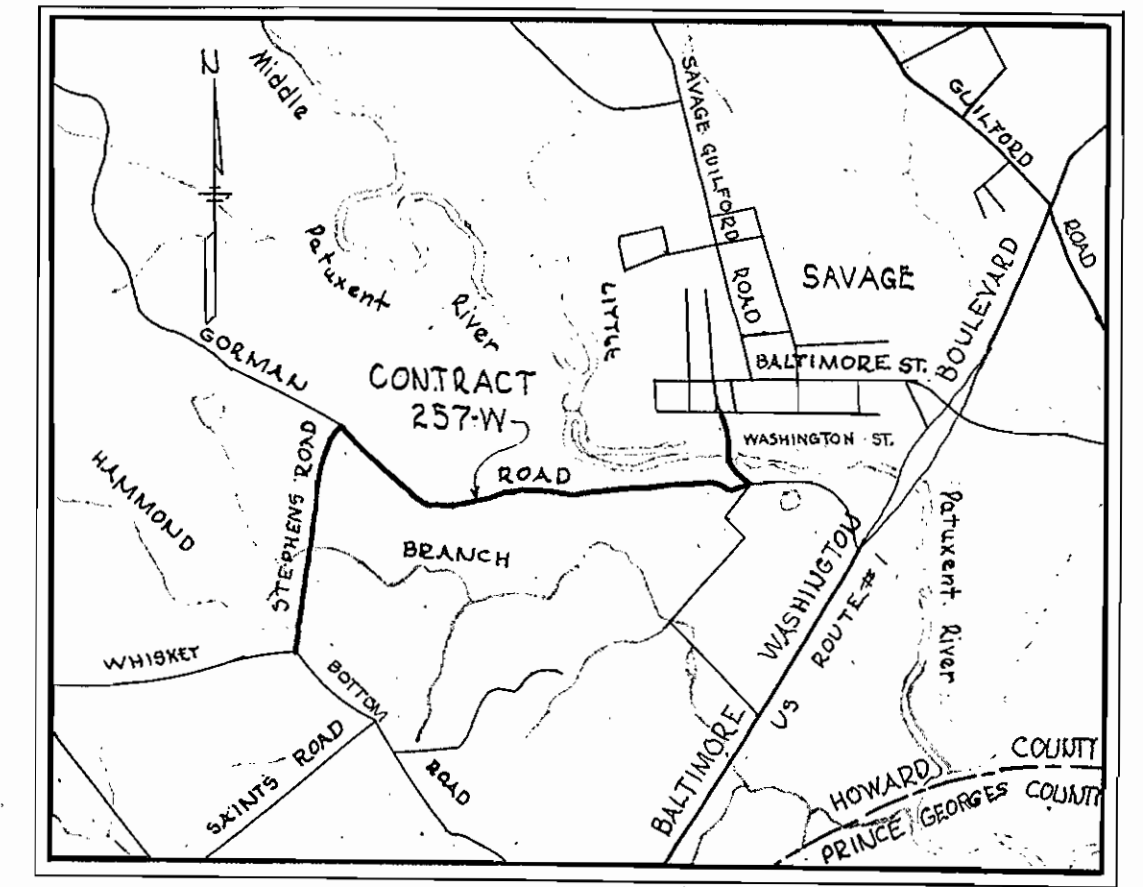


Note: Locate and remove exist.
 12"x8" T, install 12"x12" T as shown.
 Exist. 12"x8" T to be delivered to
 the Howard County Metropolitan
 Commission, storage yard. Time of
 connection to be as directed by the
 Engineer.

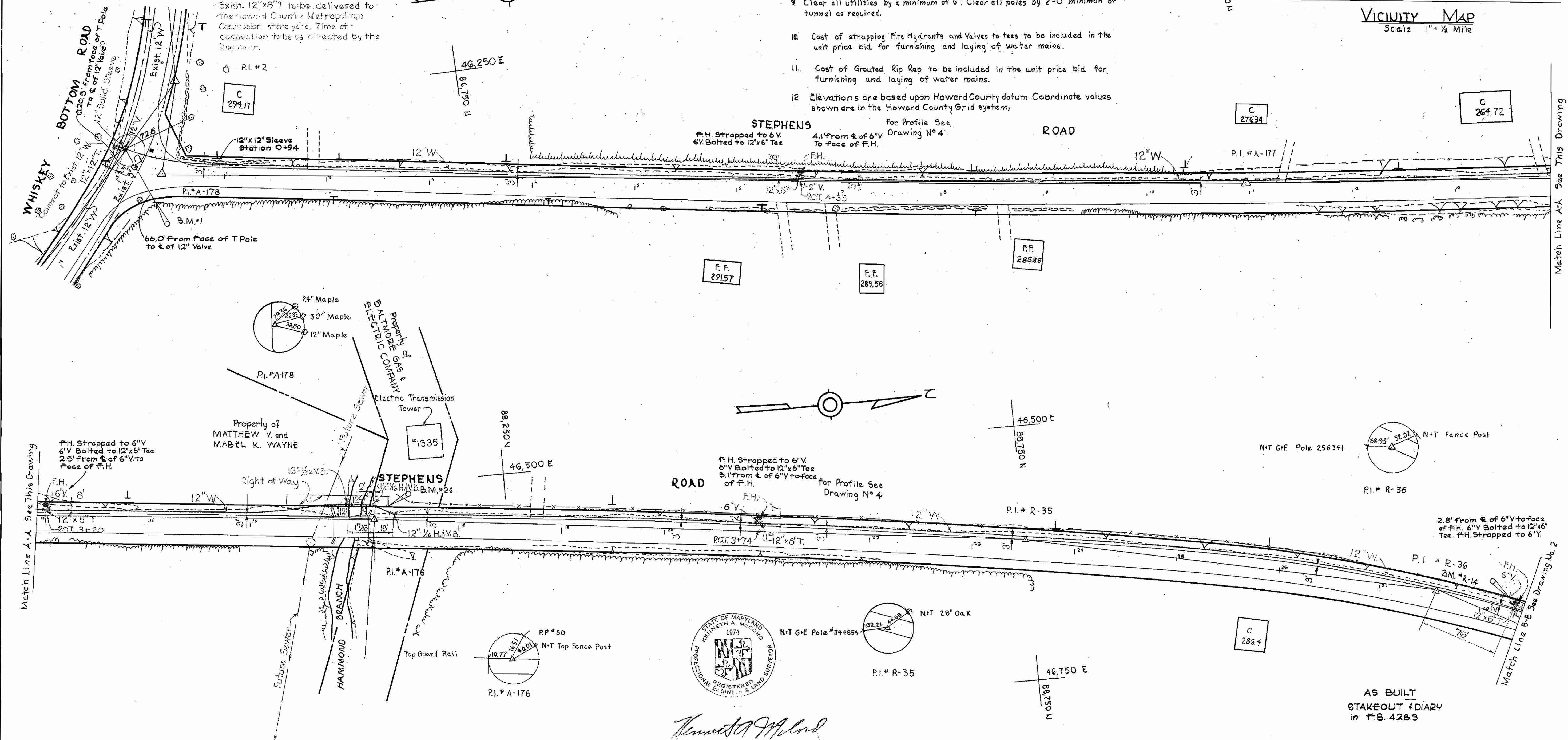


GENERAL NOTES

1. Approximate location of existing mains are shown. The Contractor shall take all necessary precautions to protect existing mains and services and maintain uninterrupted supply. Any damage incurred shall be repaired immediately.
2. All pipe elevations shown are invert elevations.
3. The Contractor shall locate existing utilities a minimum of two weeks in advance of construction operations in vicinity of utilities.
4. For all standard details see standards bound in Specifications.
5. All water mains to be C.I.P or D.I.P and have a minimum of 3/4" cover.
6. Block all fittings with concrete, see standard details bound in Specifications.
7. Bury line elevations on fire hydrants shall be set the same as edge of existing paving, top of curb, or as directed by the Engineer in the field.
8. All Fire Hydrants shall be buttressed with concrete and strapped in accordance with Standard Details.
9. Clear all utilities by a minimum of 6". Clear all poles by 2'-0" minimum or tunnel as required.
10. Cost of strapping Fire Hydrants and Valves to tees to be included in the unit price bid for furnishing and laying of water mains.
11. Cost of Grouted Rip Rap to be included in the unit price bid for furnishing and laying of water mains.
12. Elevations are based upon Howard County datum. Coordinate values shown are in the Howard County Grid system.



VICINITY MAP
 Scale 1" = 1/2 Mile



Kenneth A. McLeod

W.R.F.A. B.M.# R-14 Elev. 297.13
 G.E. Power Pole # 256341
 Between P.I.# R-36 and P.I.# R-37

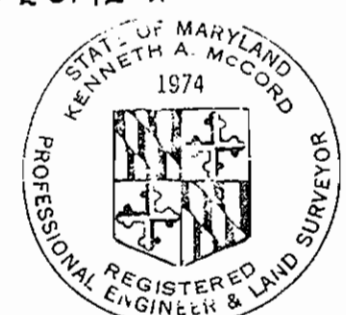
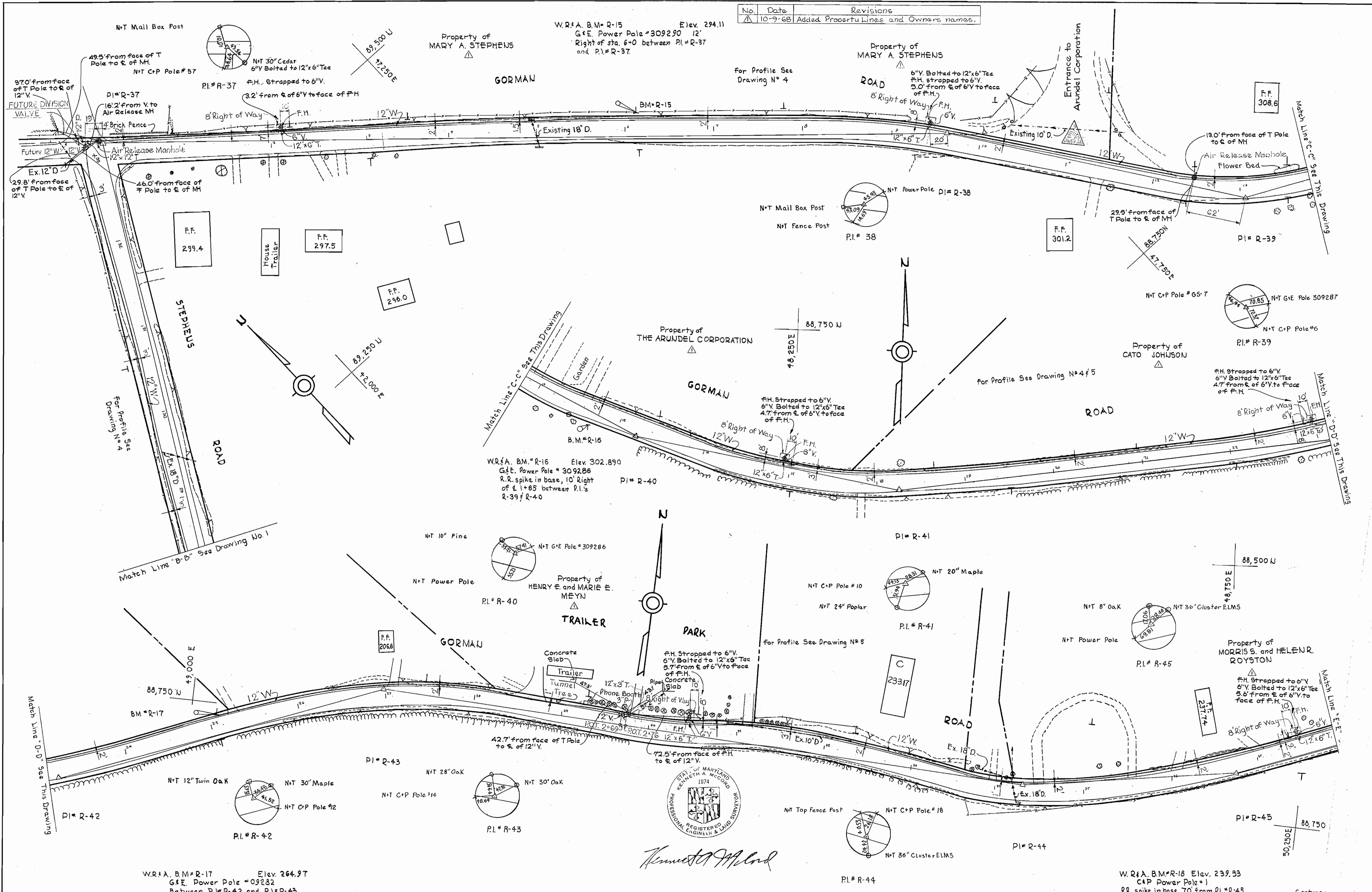
WHITMAN, REQUARDT & ASSOCIATES ENGINEERS 1304 ST. PAUL ST. BALTIMORE, MARYLAND	HOWARD COUNTY METROPOLITAN COMMISSION DATE: 9-16-68 W.O. Pillemer CHIEF ENGINEER	CONTRACT NO. 257-W	PLAN OF WATER MAINS	ELECTION DISTRICT GUILFORD NO. 6	DRAWING NO. 1 OF 5 SCALE AS SHOWN
---	---	--------------------	------------------------	-------------------------------------	--------------------------------------

WS 257-W/1

Match Line A-A See This Drawing

Match Line B-B See Drawing No. 2

No.	Date	Revisions
1	10-9-68	Added Property Lines and Owners names.



Kenneth J. McLeod

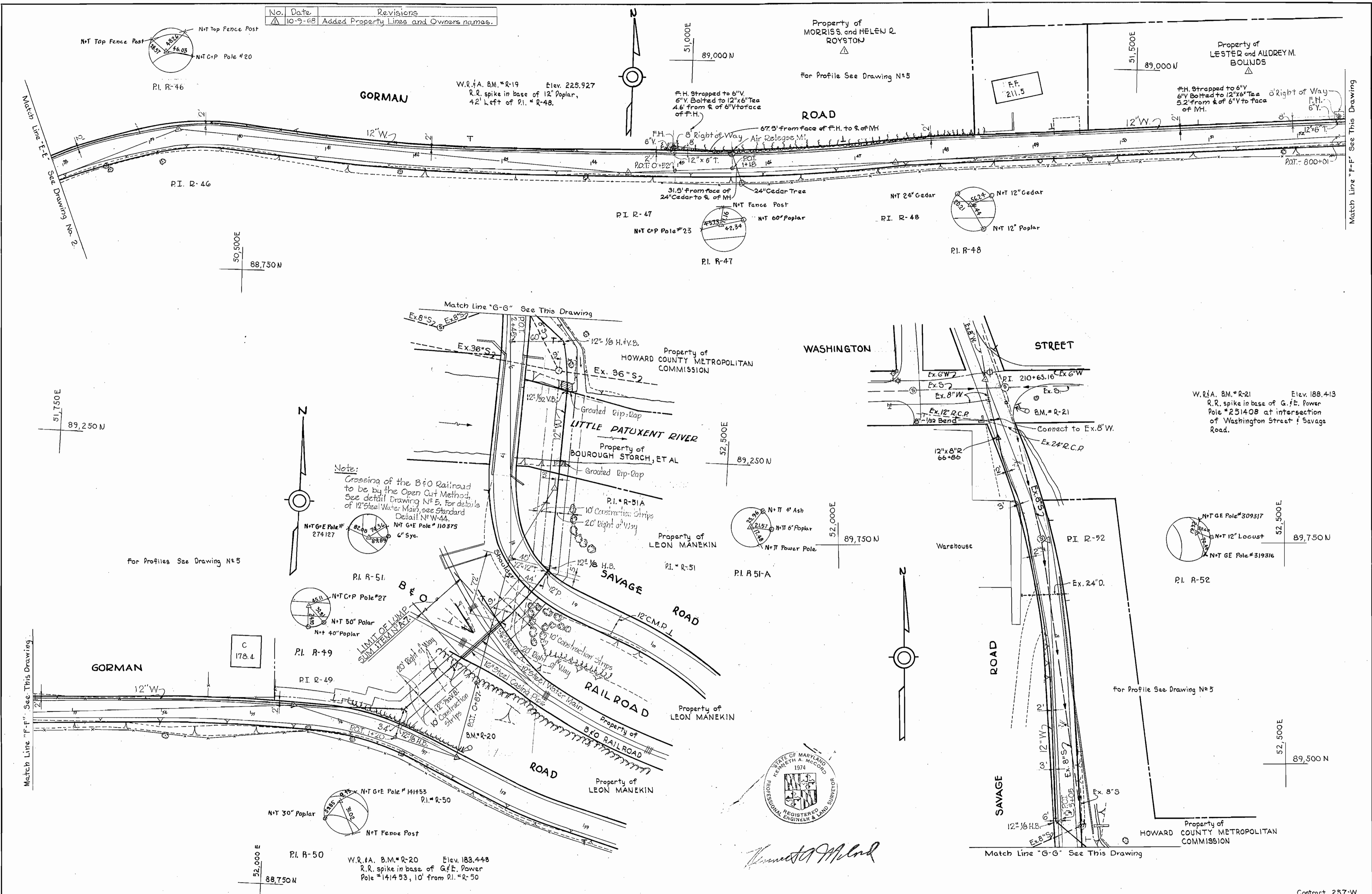
WHITMAN, REQUARDT & ASSOCIATES ENGINEERS 1304 ST. PAUL ST. BALTIMORE, MARYLAND	HOWARD COUNTY METROPOLITAN COMMISSION DATE: 9-16-68 <i>ev O. Felt</i> CHIEF ENGINEER	CONTRACT NO. 257-W	PLAN OF WATER MAINS	ELECTION DISTRICT GUILFORD NO. 6	DRAWING NO. 2 OF 5 SCALE 1"=50' OCT 9, 1968
---	---	--------------------	------------------------	-------------------------------------	---

W. O. 6021-2 AS BUILT MARCH 13, 1969

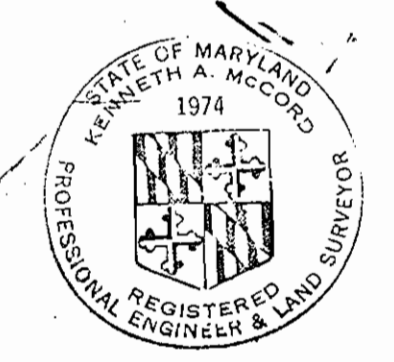
257-W/2

WS

No.	Date	Revisions
1	10-9-68	Added Property Lines and Owners names.



Note:
Crossing of the B&O Railroad to be by the Open Cut Method. See detail Drawing N# 5. For details of 12" Steel Water Main, see Standard Detail N# W-44.



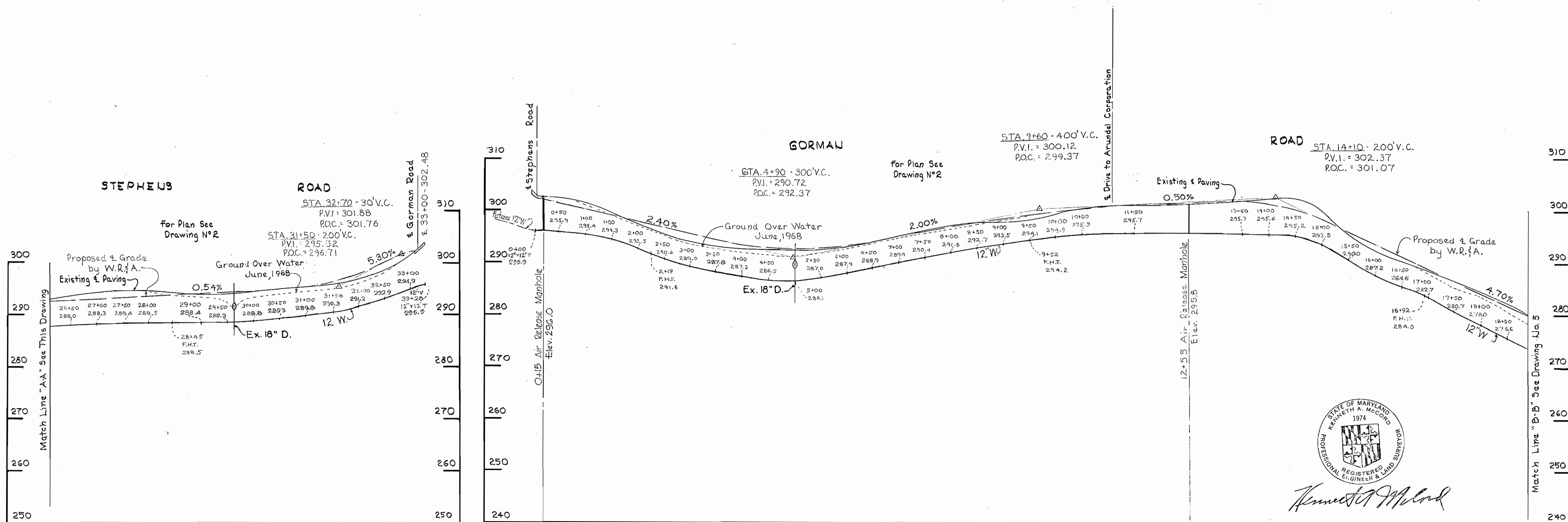
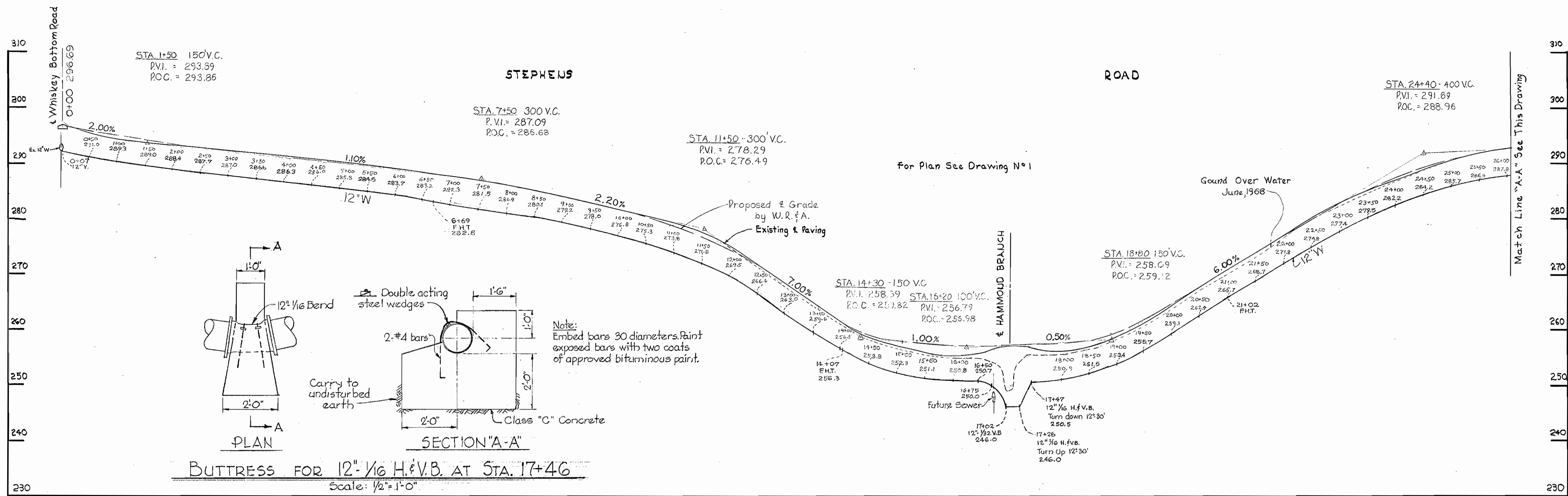
Kenneth A. McCord

WHITMAN, REQUARDT & ASSOCIATES ENGINEERS 1304 ST. PAUL ST. BALTIMORE, MARYLAND	HOWARD COUNTY METROPOLITAN COMMISSION 9-16-68 <i>ev O Albert</i> DATE CHIEF ENGINEER	CONTRACT NO. 257-W	PLAN OF WATER MAINS	ELECTION DISTRICT GUILFORD NO. 6	DRAWING NO. 3	SCALE 1"=50'
					OF 5	Contract 257-W

W. O. 6021-2

MARCH 13, 1969 AS BUILT

OCT. 9, 1968



Kenneth A. Milrod

WHITMAN, REQUARDT & ASSOCIATES
 ENGINEERS
 1304 ST. PAUL ST.
 BALTIMORE, MARYLAND

HOWARD COUNTY METROPOLITAN COMMISSION
 DATE 9-16-68
 W. O. F. [Signature]
 CHIEF ENGINEER

CONTRACT NO. 257-W

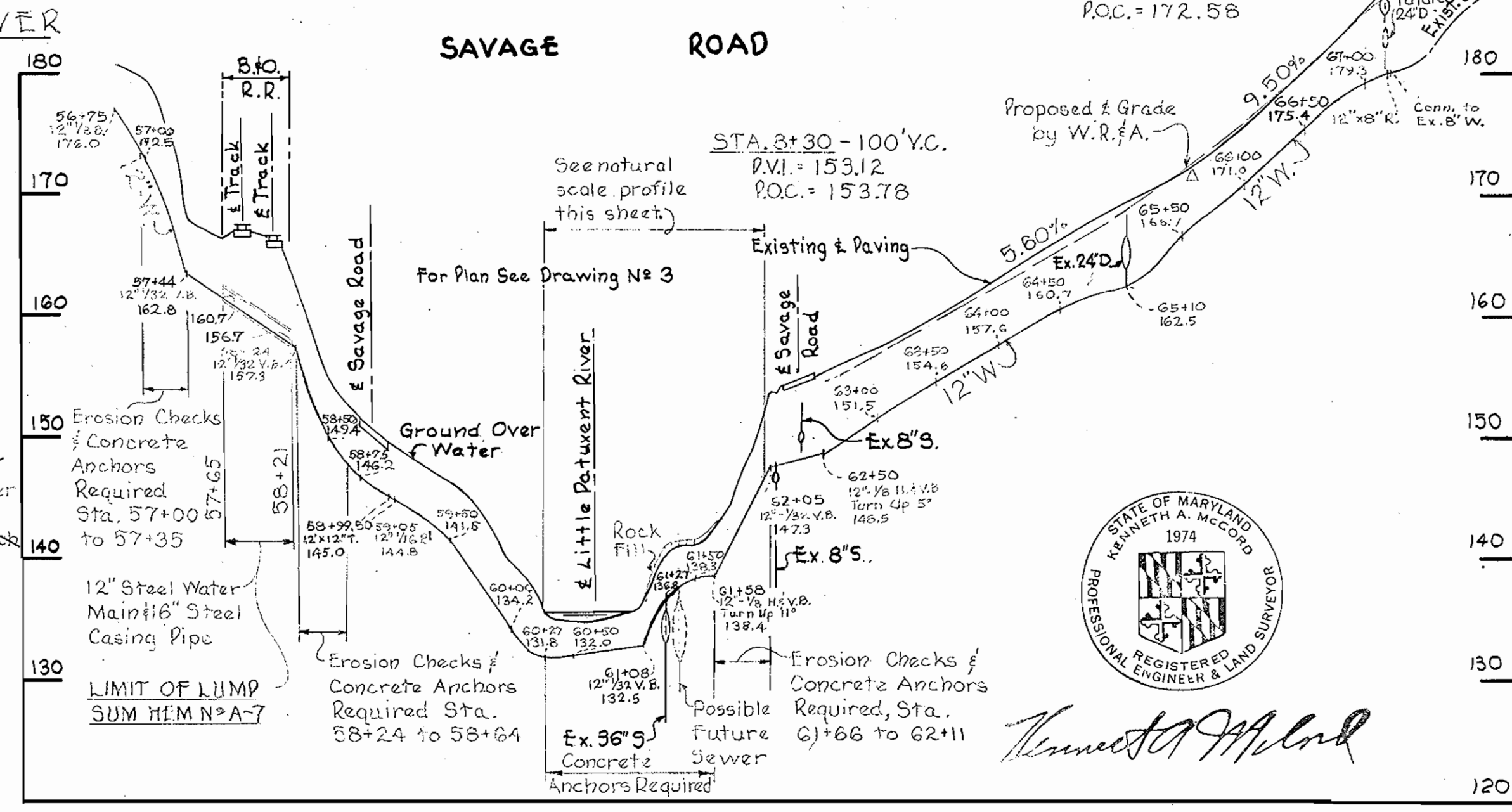
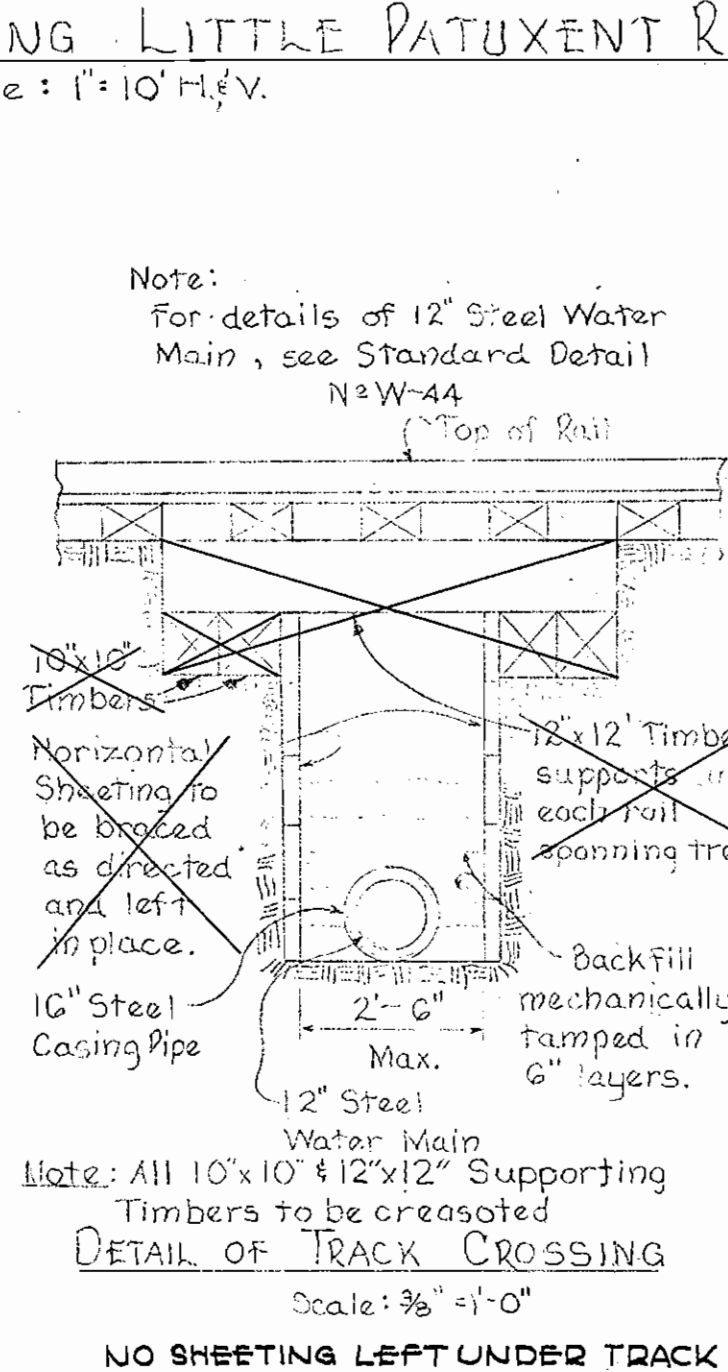
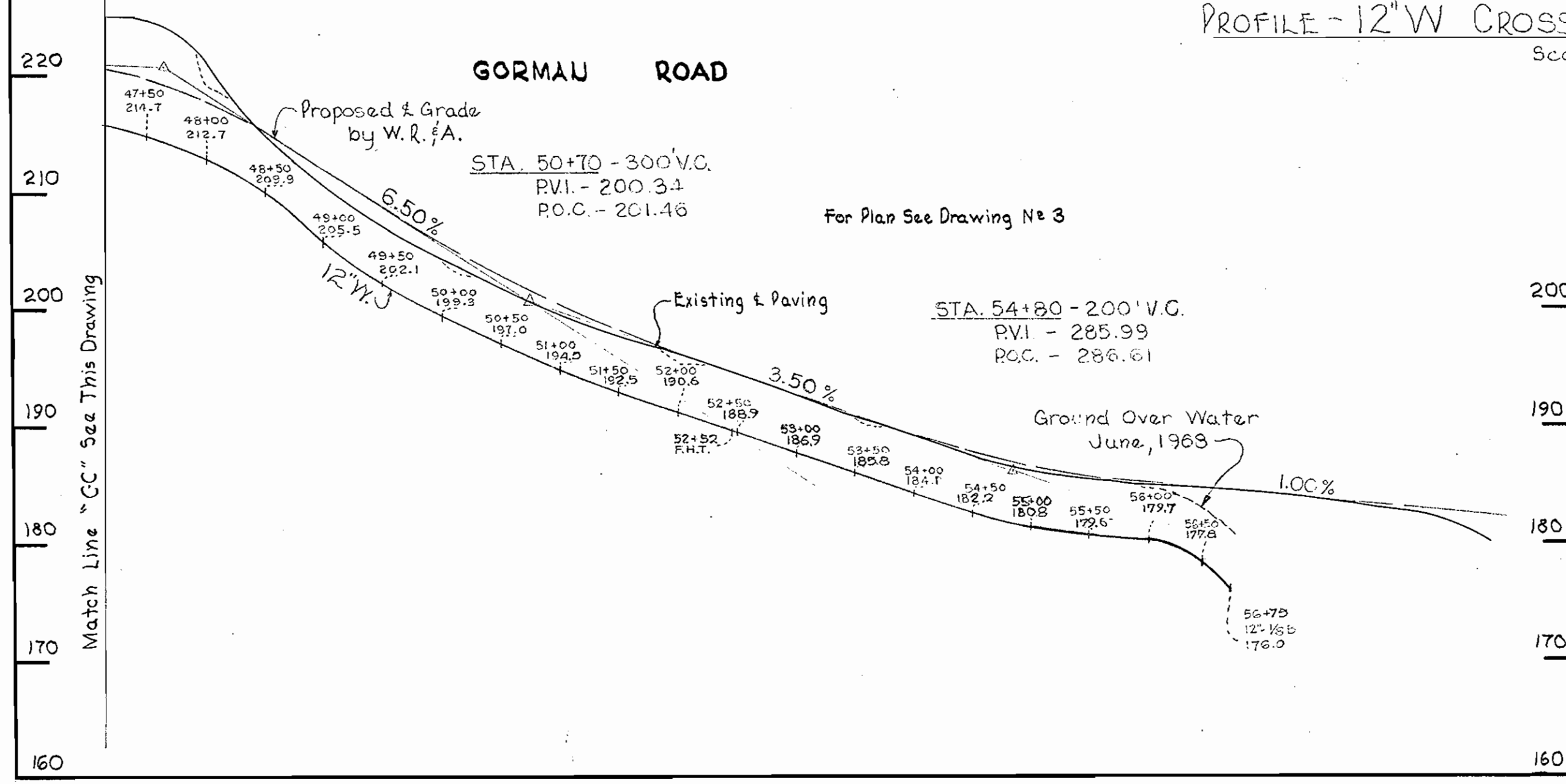
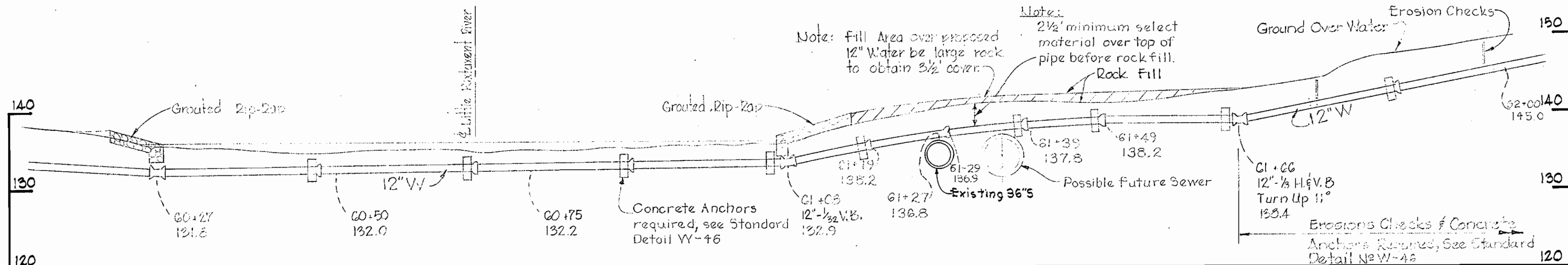
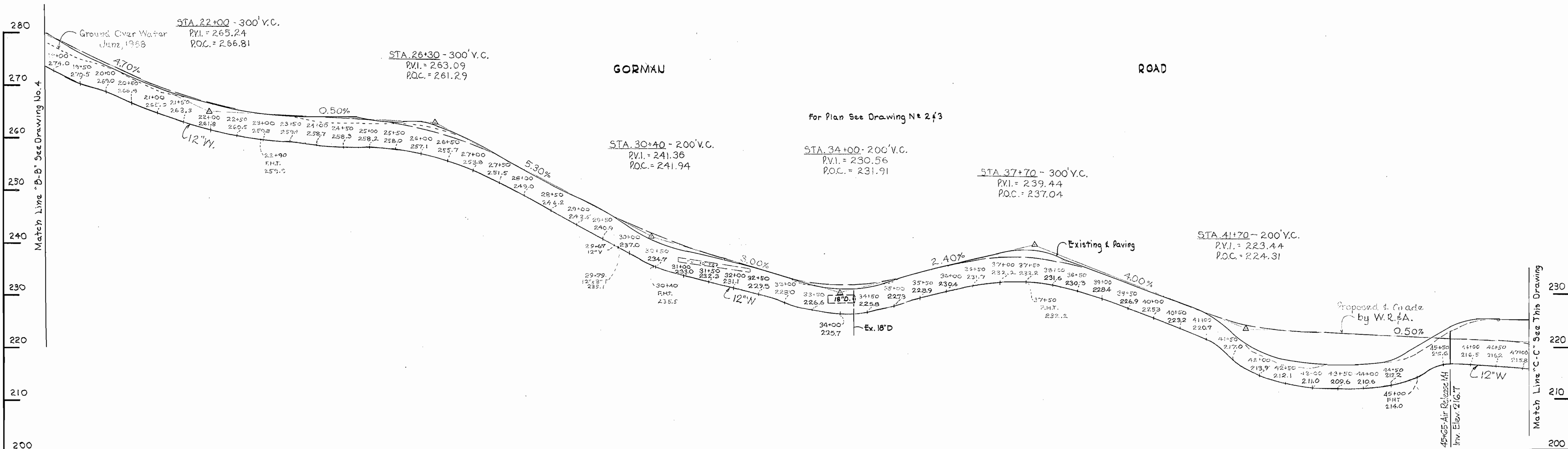
PROFILES OF
 WATER MAINS

ELECTION DISTRICT
 GUILFORD NO. 6

DRAWING NO. 4 OF 5
 SCALE H-1"=100' V-1"=10'

Contract 257-W

WS 257-W/4



Kenneth A. McCulloch

WHITMAN, REQUARDT & ASSOCIATES ENGINEERS 1304 ST. PAUL ST. BALTIMORE, MARYLAND	HOWARD COUNTY METROPOLITAN COMMISSION 9-16-68 DATE <i>W. O. Falub</i> CHIEF ENGINEER	CONTRACT NO. 257-W	PROFILES OF WATER MAINS	ELECTION DISTRICT GUILFORD NO. 6	DRAWING NO. 5 OF 5 SCALE H-1"=100' V-1"=10'
---	--	--------------------	-------------------------	----------------------------------	--

WS 257-W/5