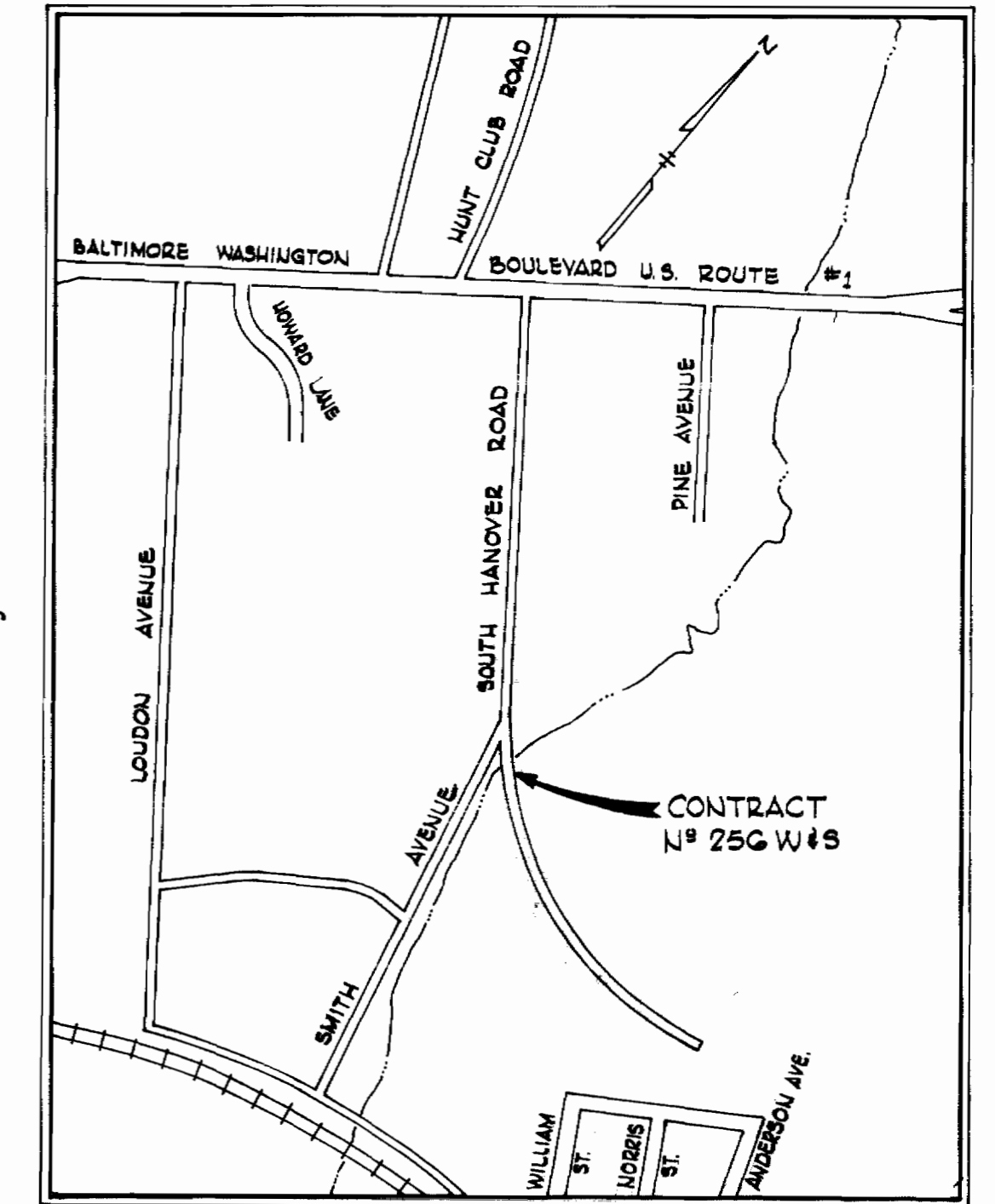


W.R.#A. BM#D-8 Elev. 128.67  
 R.R. Spike in 12" Maple  
 90' right of Sta. 2+50  
 between PI#D-27 & PI#D-28



VICINITY MAP  
 Scale: 1" = 600'

GENERAL NOTES

1. Approximate location of existing mains are shown. The Contractor shall take all necessary precautions to protect existing mains and services and maintain uninterrupted supply. Any damage incurred shall be repaired immediately.
2. All pipe elevations shown are invert (I) elevations.
3. The Contractor shall locate existing utilities a minimum of two weeks in advance of construction operations in vicinity of utilities.
4. For all standard details see standards bound in Specifications.
5. Clear all utilities by a minimum of 6'; clear all poles by 2'-0" or tunnel as required.
6. The Contractor shall provide a joint in all sewer mains within 2'-0" of exterior manhole walls.
7. All manholes shall be 4'-0" inside diameter.
8. All water mains to have a minimum of 8 1/2' cover unless otherwise noted.
9. Block all fittings with concrete, see standards bound in Specifications.
10. Bury line elevations on fire hydrants shall be set to elevations shown on the drawings, or as directed by the Engineer in the field.
11. All fire hydrants shall be strapped to the tee and buttressed with concrete in accordance with standard details.
12. All horizontal and vertical controls are based on Howard County Datum.

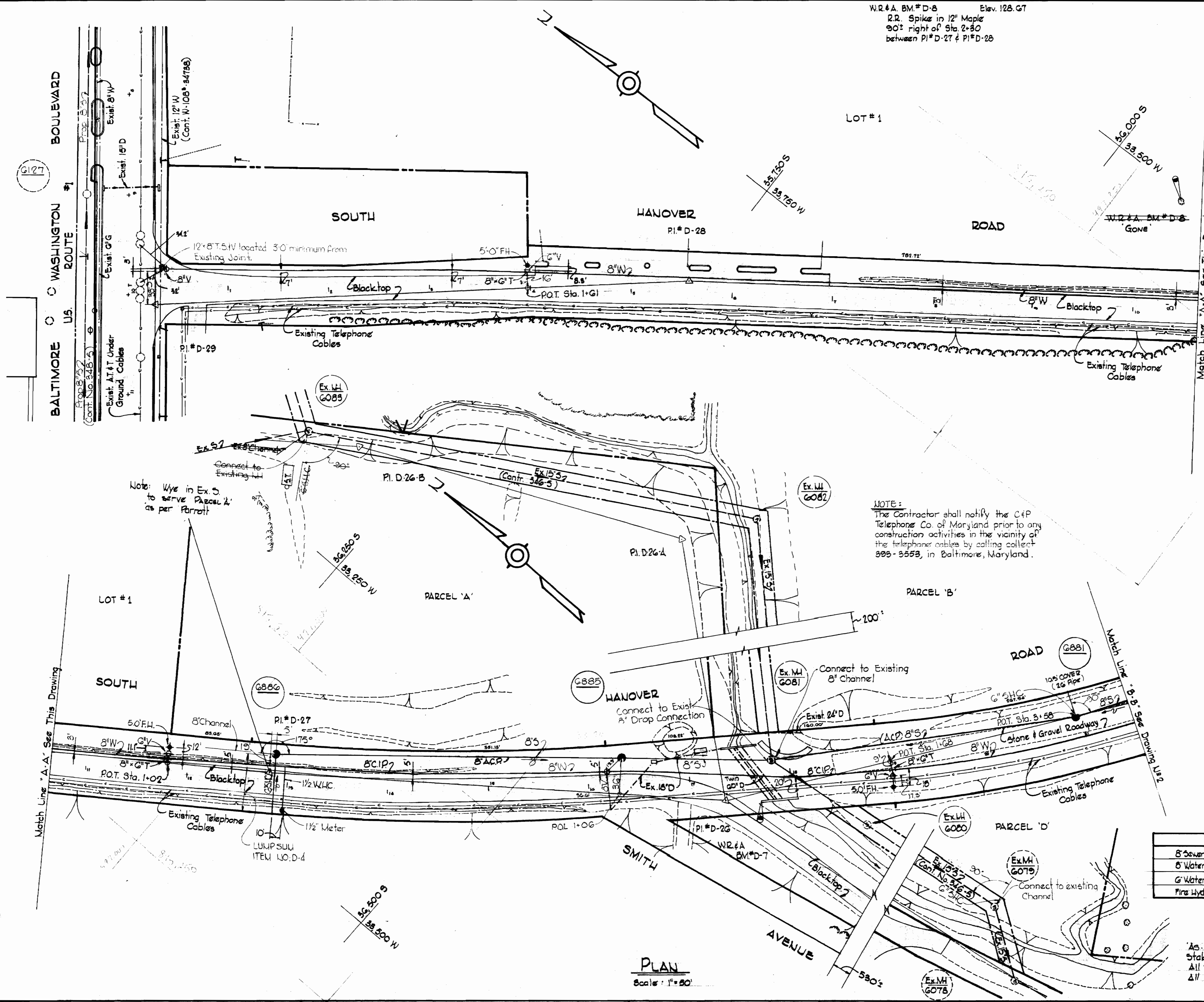
QUANTITIES	
8" Sewer	1,545'
8" Water	3,130'
6" Water	60'
Fire Hydrants	4



*Kenneth A. McLeod*

As built  
 Stakeout and Diary Feb 5212  
 All Sewer - A.C.P.  
 All Water - C.I.P.

AG Parrott Industrial Park  
 Contract W & S 256



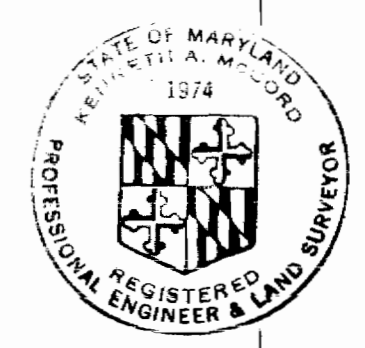
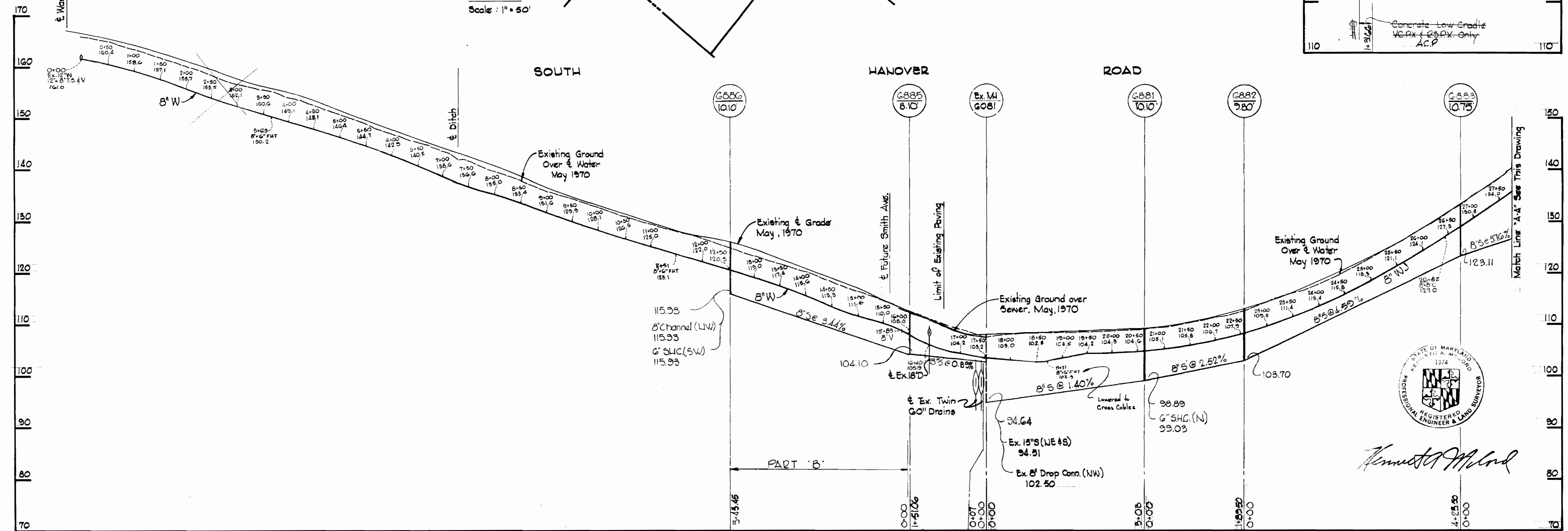
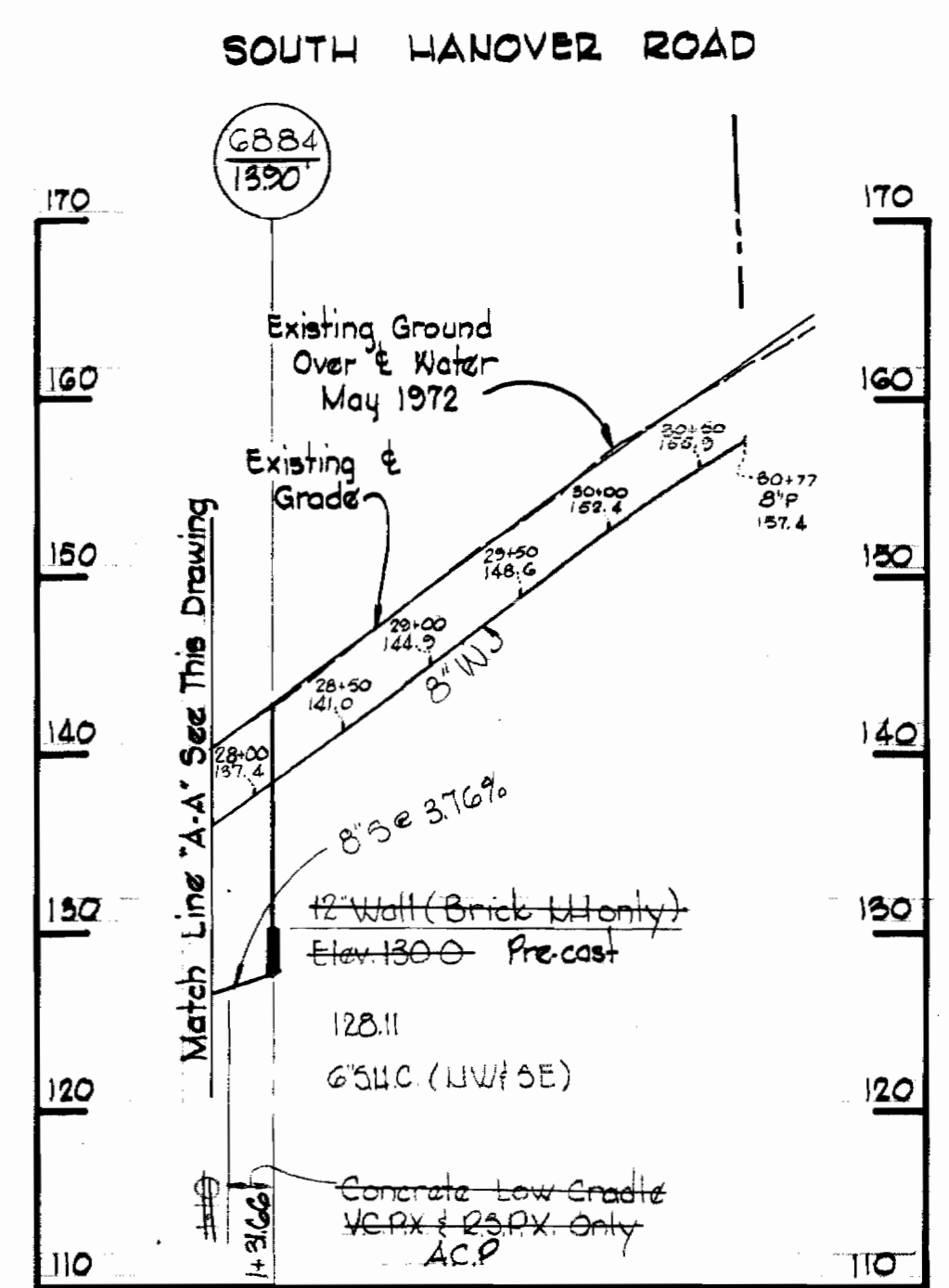
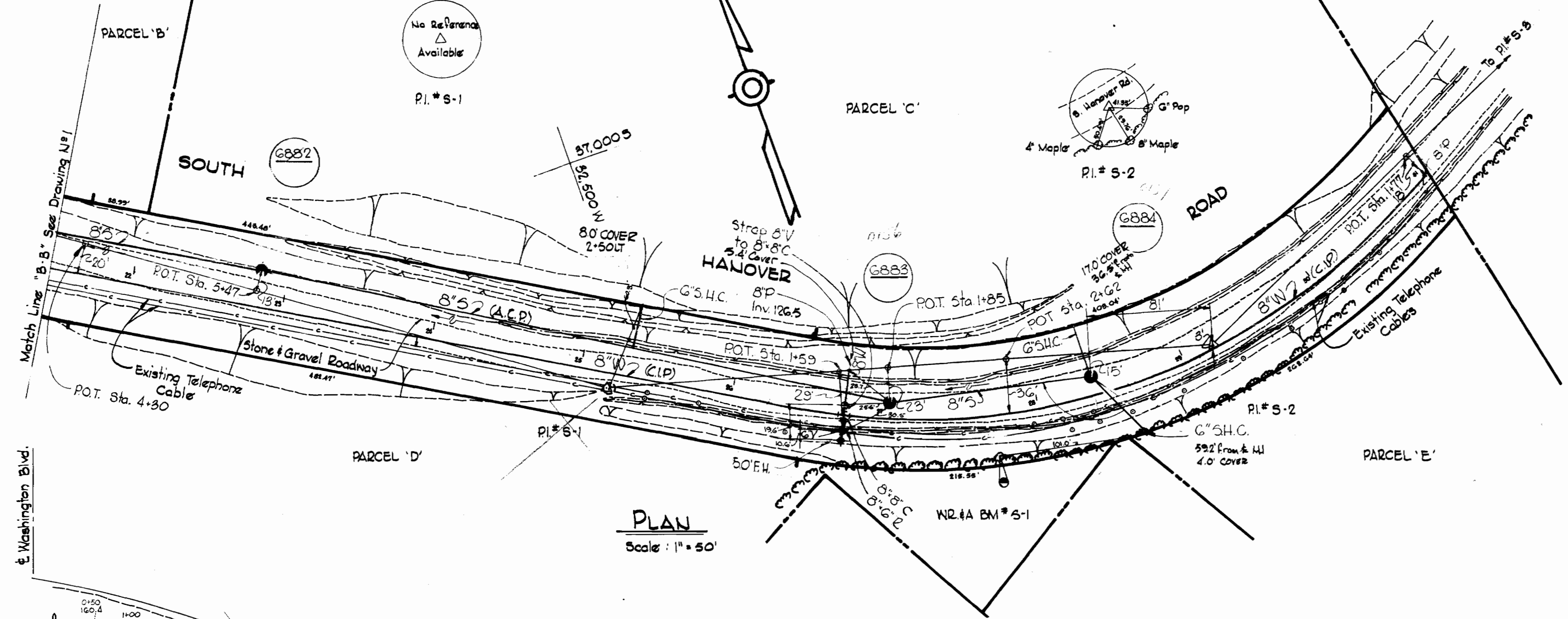
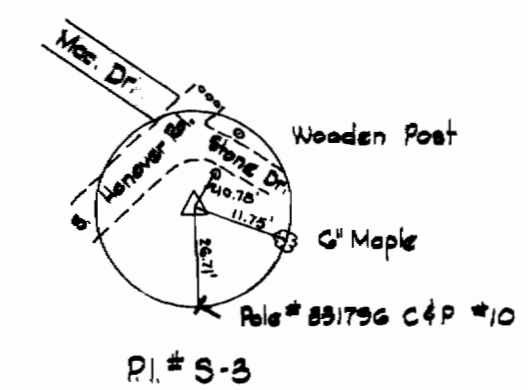
PLAN  
 Scale: 1" = 80'

256-WS/1

WHITMAN, REQUARDT & ASSOCIATES ENGINEERS 1304 ST. PAUL ST. BALTIMORE, MARYLAND	DEPARTMENT OF PUBLIC WORKS HOWARD COUNTY, MARYLAND 8-28-72 DATE <i>W. O. Parrott</i> CHIEF - BUREAU OF WATER AND SEWER	CONTRACT NO. 256 W & S	PLAN OF WATER & SEWER MAINS	ELECTION DISTRICT ELKRIDGE NO. 1	DRAWING NO. 1 OF 2 SCALE AS SHOWN 96 SW 23 87 SW 23 87 SW 22
---	---	------------------------	--------------------------------	----------------------------------	--

W.R. & A. BM\* S-1 Elev. 155.85  
 Pk. nail on side of 24" Twin  
 Pop. GO' Rt. of Sta. 2+51 ±  
 Bot. Pl. \* S-1 & S-2.

**NOTE:**  
 The Contractor shall notify the C&P Telephone Co of Maryland prior to any construction activities in the vicinity of the telephone cables by calling collect 338-3553 in Baltimore, Maryland.



*Kenneth A. M. Lord*

**WHITMAN, REQUARDT & ASSOCIATES**  
 ENGINEERS  
 1304 ST. PAUL ST.  
 BALTIMORE, MARYLAND

**DEPARTMENT OF PUBLIC WORKS**  
 HOWARD COUNTY, MARYLAND  
 8-28-72  
*W. O. G. 24-2*  
 CHIEF - BUREAU OF WATER AND SEWER

**CONTRACT NO. 256 W & S**

**PLAN & PROFILES OF WATER & SEWER MAINS**

**ELECTION DISTRICT ELKRIDGE NO. 1**

**DRAWING NO. 2 OF 2**  
**SCALE AS SHOWN**