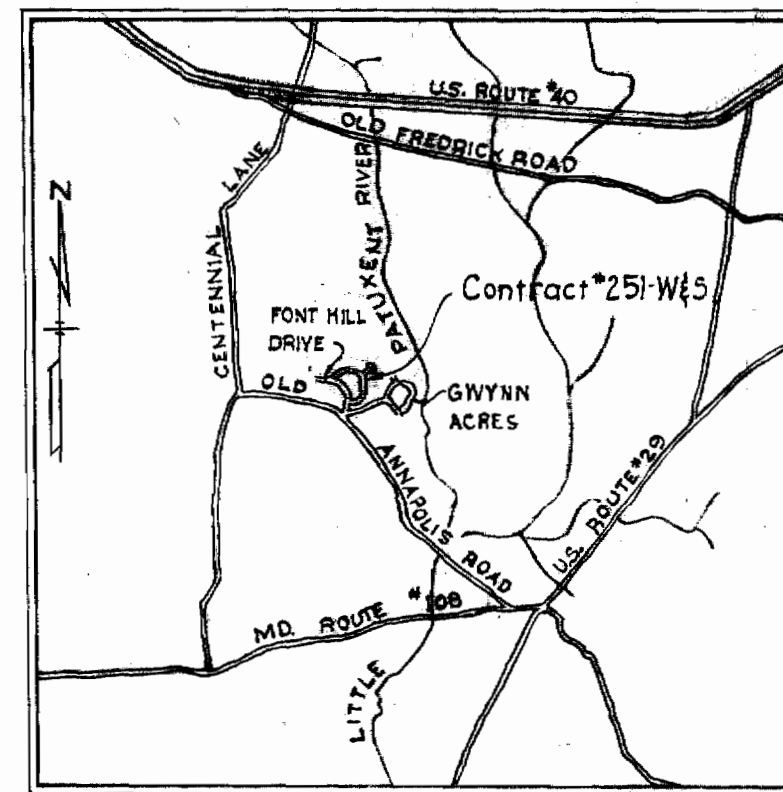


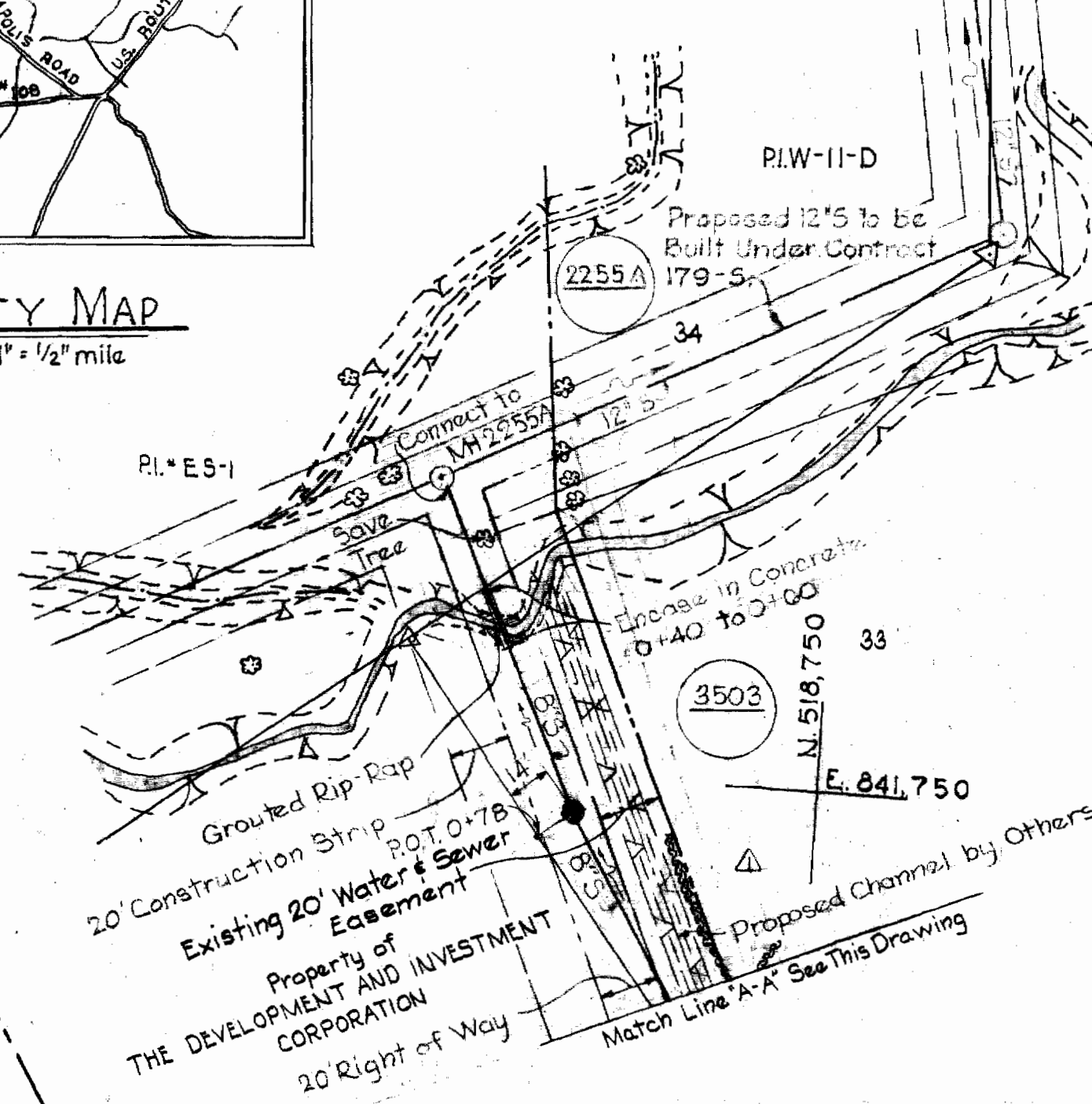
W.R.&A. B.M.*F-2 Elev. 350.67
R.R. spike in 20' Walnut (Reference for
P.I.*W-II-E) 15' Lt. of Sta. 0+65 between
P.I.*W-II-E and P.I.*W-II-F

Proposed 12" S to be
Built Under Contract
179-S



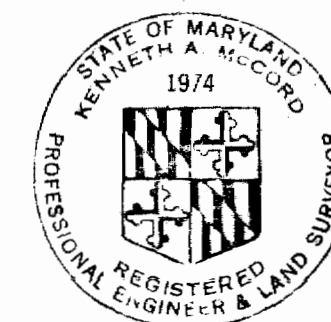
W.R.&A. B.M.*F-1 Elev. 341.366
R.R. spike in base of 12' Elm
8' Lt. of P.I.*W-II-C

VICINITY MAP
Scale: 1" = 1/2 mile



QUANTITIES	
6" Water Main	1720 L.F.
8" Sewer Main	1127 L.F.

AS BUILT
STAKEOUT DIARY IN F.B. #297



Kenneth A. McCord

No.	Date	Revisions
1	11-8-68	Revised Outfall 'B' Manhole 2255-A thru Manhole 350G. W.R.&A. S.H.C. Relocated at lot '7' Block 'O'.

W.R.&A. B.M.*F-3 Elev. 391.705
R.R. spike in 0' E pole #33968 (Ref for
P.I.*W-II-I) 15' right of sta. 0+65 bet.
P.I.'s W-II-I & W-II-J, along Dee Dee Drive
between Font Hill Drive & Dee Jay Drive

Note: Lot 5 To Be Served
On Font Hill Drive
Under Contracts
267-S & 188-W.

PLAN
1" = 50'

WHITMAN, REQUARDT & ASSOCIATES
ENGINEERS
1304 ST. PAUL ST.
BALTIMORE, MARYLAND

HOWARD COUNTY METROPOLITAN COMMISSION
10-28-68
W. O. Falbert
CHIEF ENGINEER

CONTRACT NO. 251-W&S

PLAN OF
WATER AND SEWER MAINS

ELLICOTT CITY - GWYNN ACRES
ELECTION DISTRICT - ELLICOTT CITY No. 2

DRAWING
NO. 1
OF 2

SCALE
AS
SHOWN

Contract #251-W&S

251-WS/1

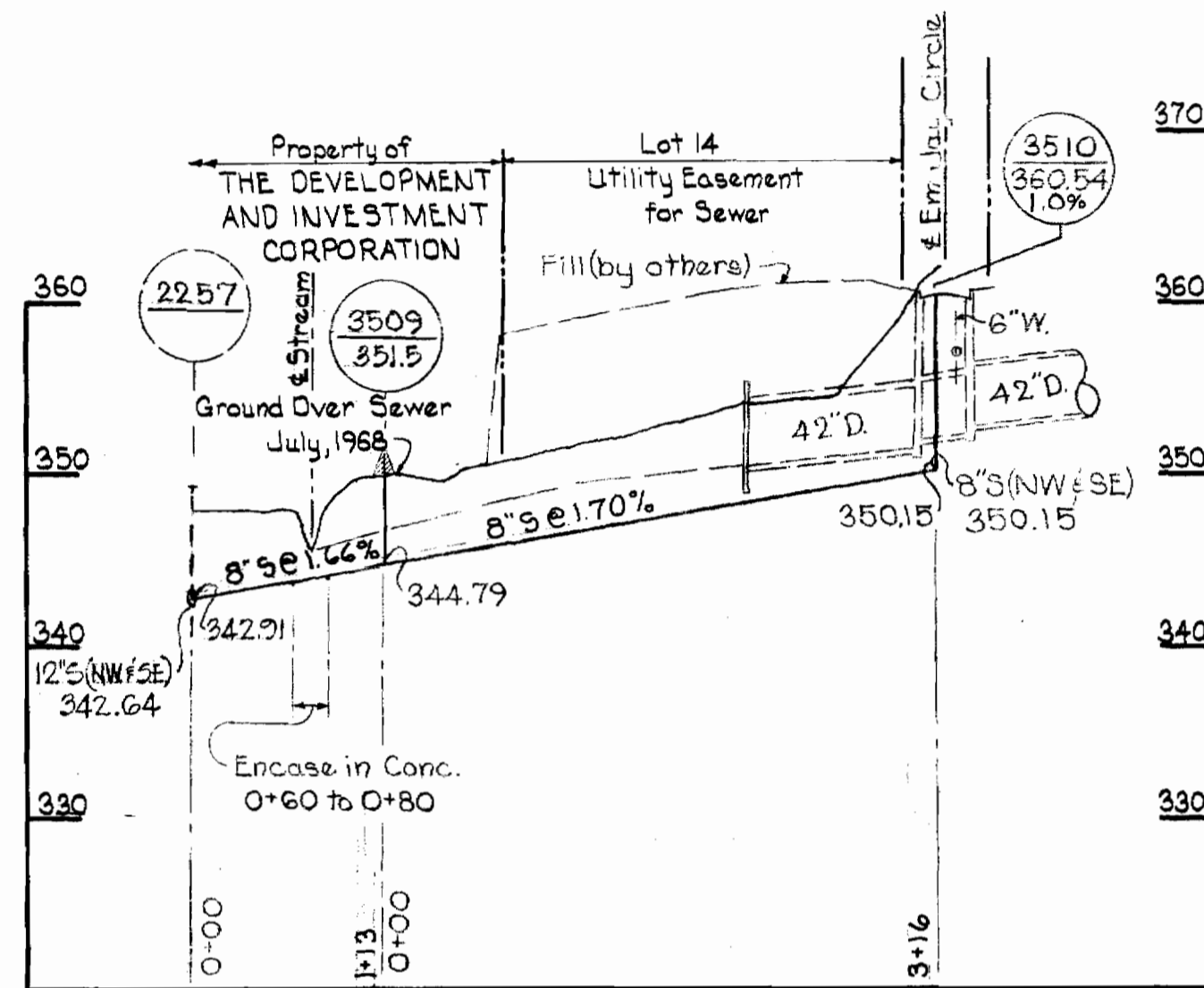
S

No.	Date	Revisions
1	11-8-68	Revised Outfall 'B' Manhole 2.255-A thru Manhole 3506.

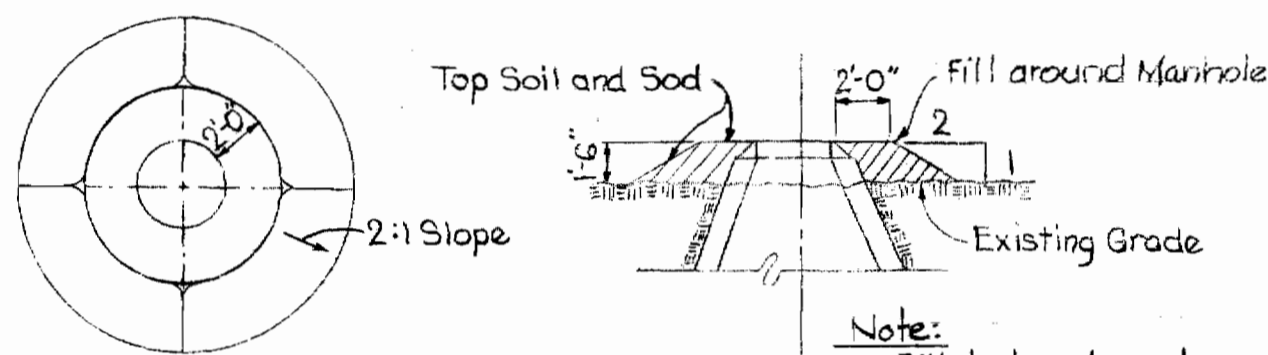
GENERAL NOTES

1. Approximate location of existing mains are shown. The Contractor shall take all necessary precautions to protect existing mains and services and maintain uninterrupted supply. Any damage incurred shall be repaired immediately.
2. All pipe elevations shown are Invert Elevations.
3. The Contractor shall locate existing utilities a minimum of two weeks in advance of construction operations in vicinity of utilities.
4. For all standard details see standards bound in Specifications.
5. All water mains to be C.I.P. or D.I.P. and have a minimum of 3 1/2' cover.
6. Block all fittings with concrete, see standard details bound in specifications.
7. Bury line elevations on fire hydrants shall be set the same as edge of paving, top of curb, or as directed by the Engineer in the field.
8. All Fire hydrants shall be buttressed with concrete and strapped in accordance with Standard Details.
9. Cost of strapping Fire Hydrants and Valves to tee's to be included in the unit price bid for furnishing and laying of water mains.
10. Clear all utilities by a minimum of 6', clear all poles by 2'-0" minimum or tunnel as required.
11. The Contractor shall provide a joint in all sewer mains within 2'-0" of exterior manhole walls. Elevations are based upon Maryland State Datum. Coordinates based upon Maryland State Datum.
12. The Contractor shall notify the Telephone Company prior to any construction activities in the vicinity of the Telephone cables by calling collect anytime 393-3553 in Baltimore, Maryland.
13. Cost of Grouted Rip Rap to be included in the unit price bid for furnishing and laying of Sewer Mains.
14. All Sewers shall be V.C.P., C.S.P., or Asbestos Cement Class 2400 unless otherwise noted.
15. Sewer Water House Connections shall be constructed only where and if directed by the Engineer in the field.

OUTFALL 'A'



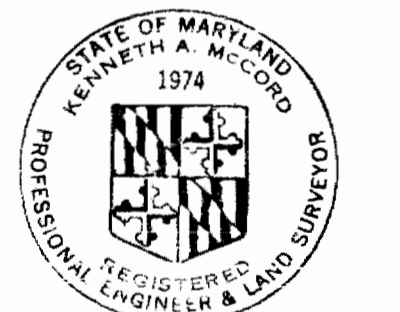
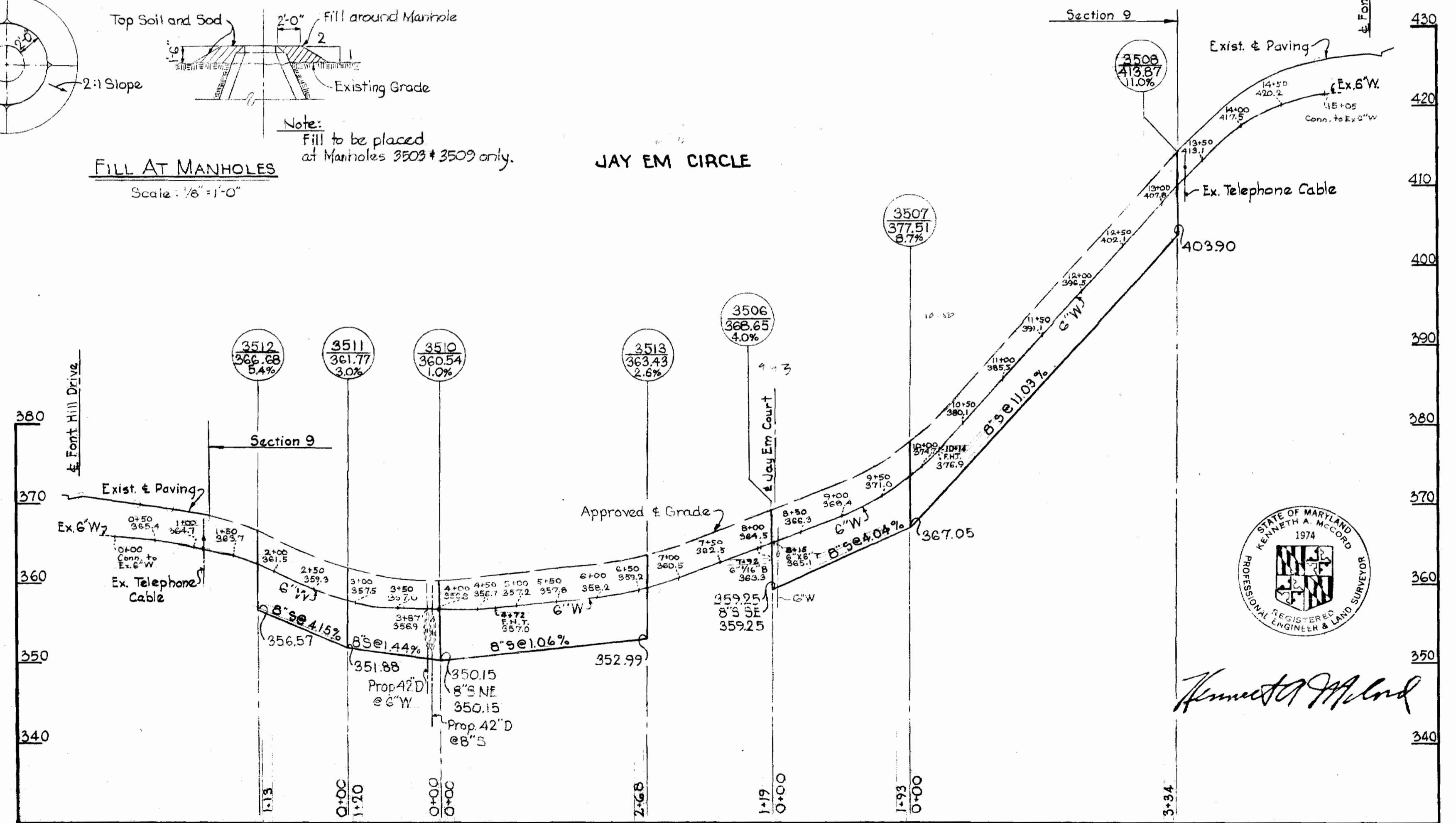
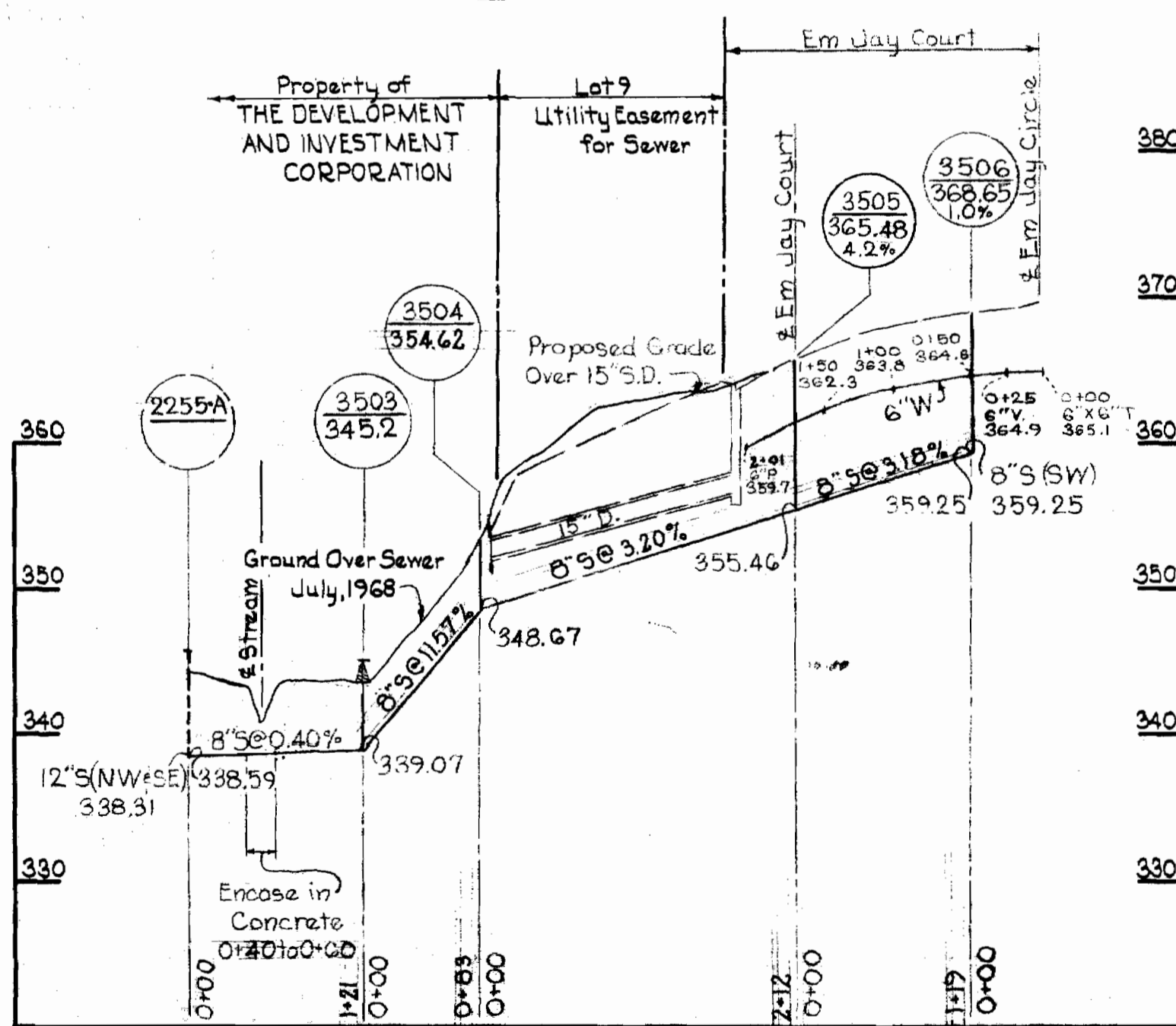
ALL SEWER PIPE - ACP CLASS 2400
ALL WATER PIPE - CAST IRON



FILL AT MANHOLES

Scale: 1/8" = 1'-0"

OUTFALL 'B'



Kenneth A. McCord

WHITMAN, REQUARDT & ASSOCIATES
ENGINEERS
1304 ST. PAUL ST.
BALTIMORE, MARYLAND

HOWARD COUNTY METROPOLITAN COMMISSION
10-28-68
DATE
W. O. Peltone
CHIEF ENGINEER

CONTRACT NO. 251-W&S

PROFILE OF
WATER AND SEWER MAINS

ELLICOTT CITY-GWYNN ACRES
ELLICOTT DISTRICT-ELLICOTT CITY No. 2

CONTRACT # 251-W&S
DRAWING NO. 2 OF 2
SCALE H: 1"=100' V: 1"=10'