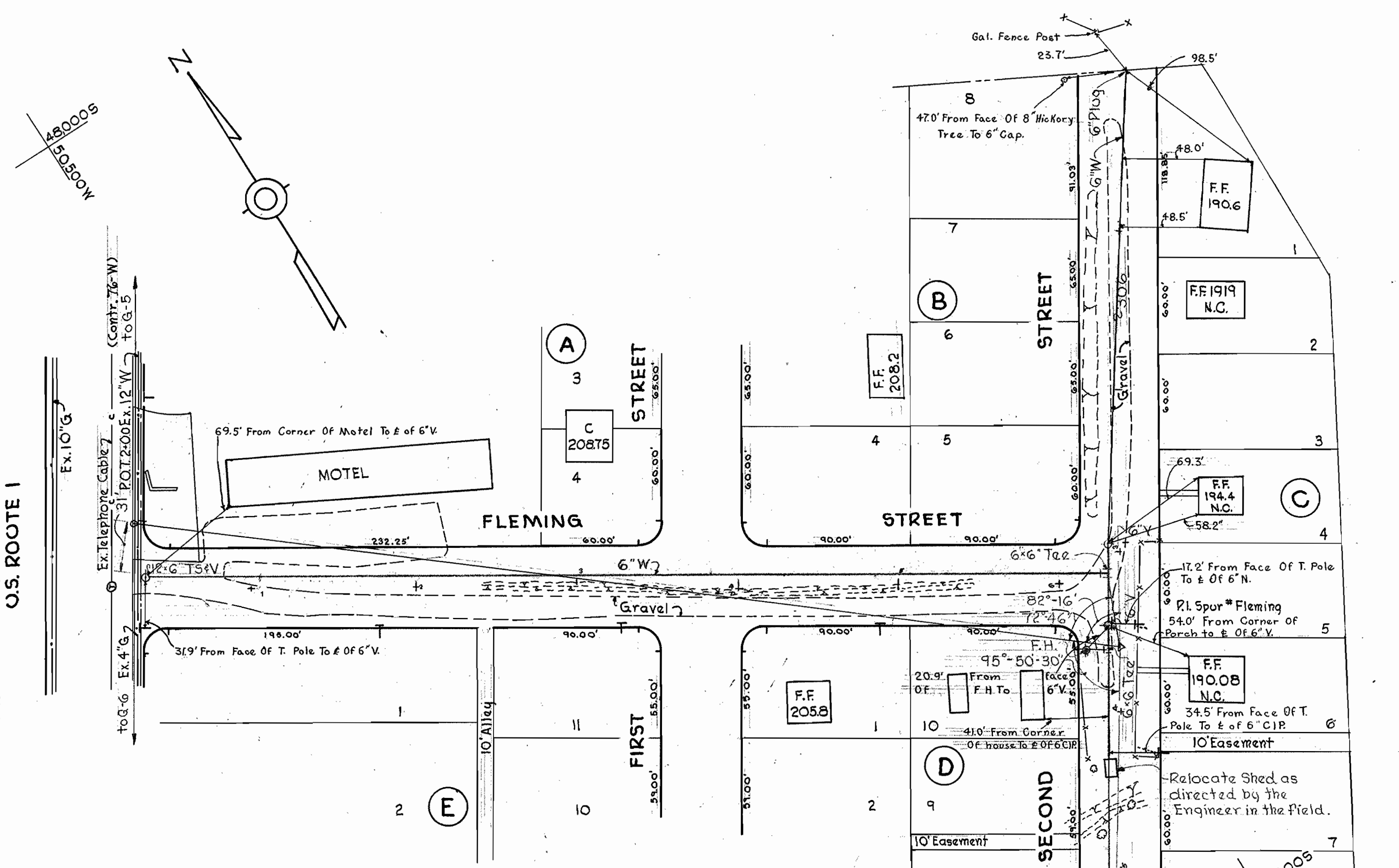
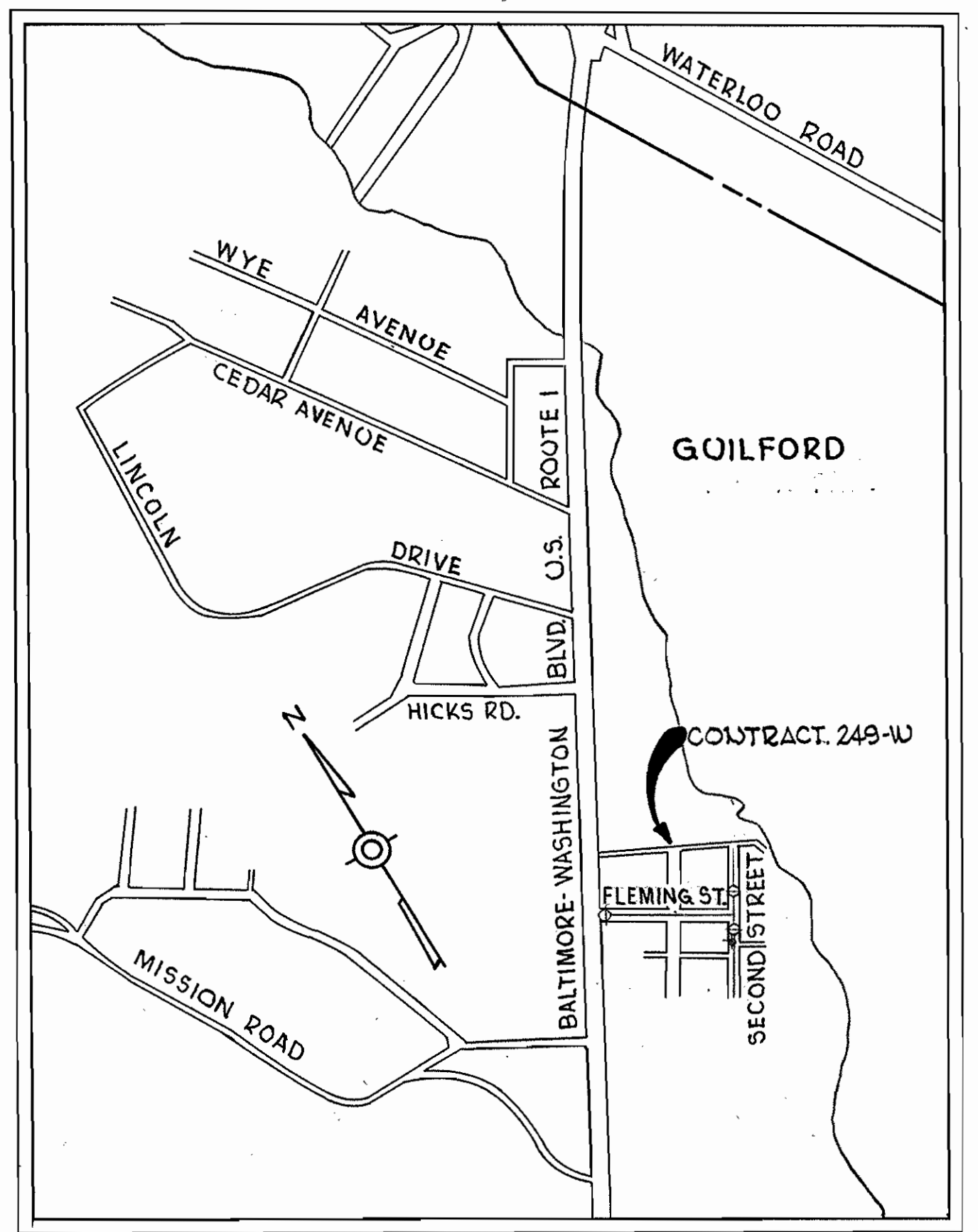


BALTIMORE-WASHINGTON BOULEVARD
U.S. ROUTE 1



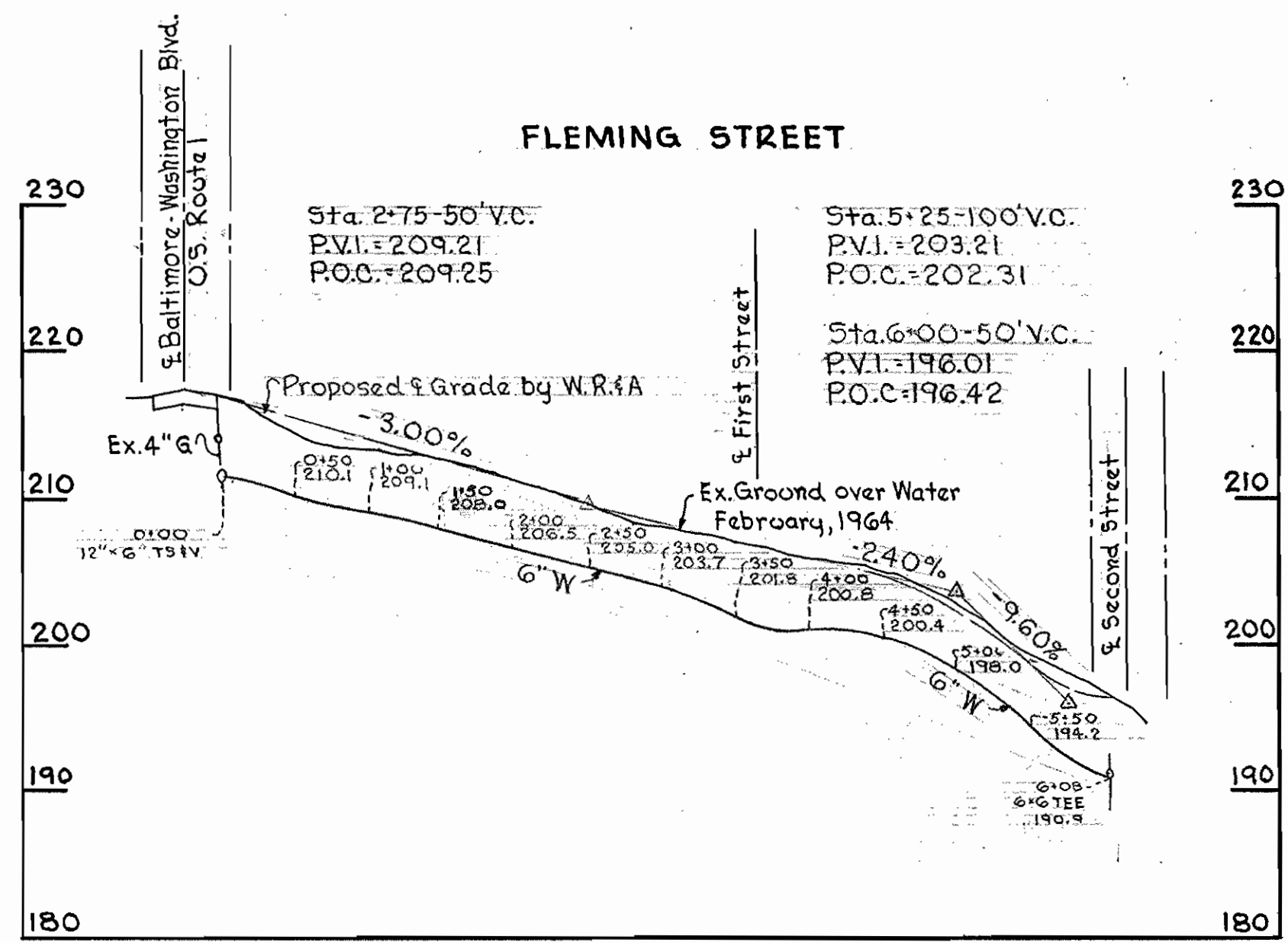
PLAN
Scale: 1" = 50'



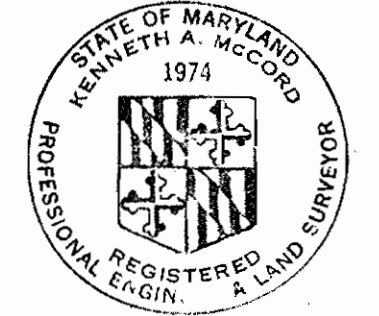
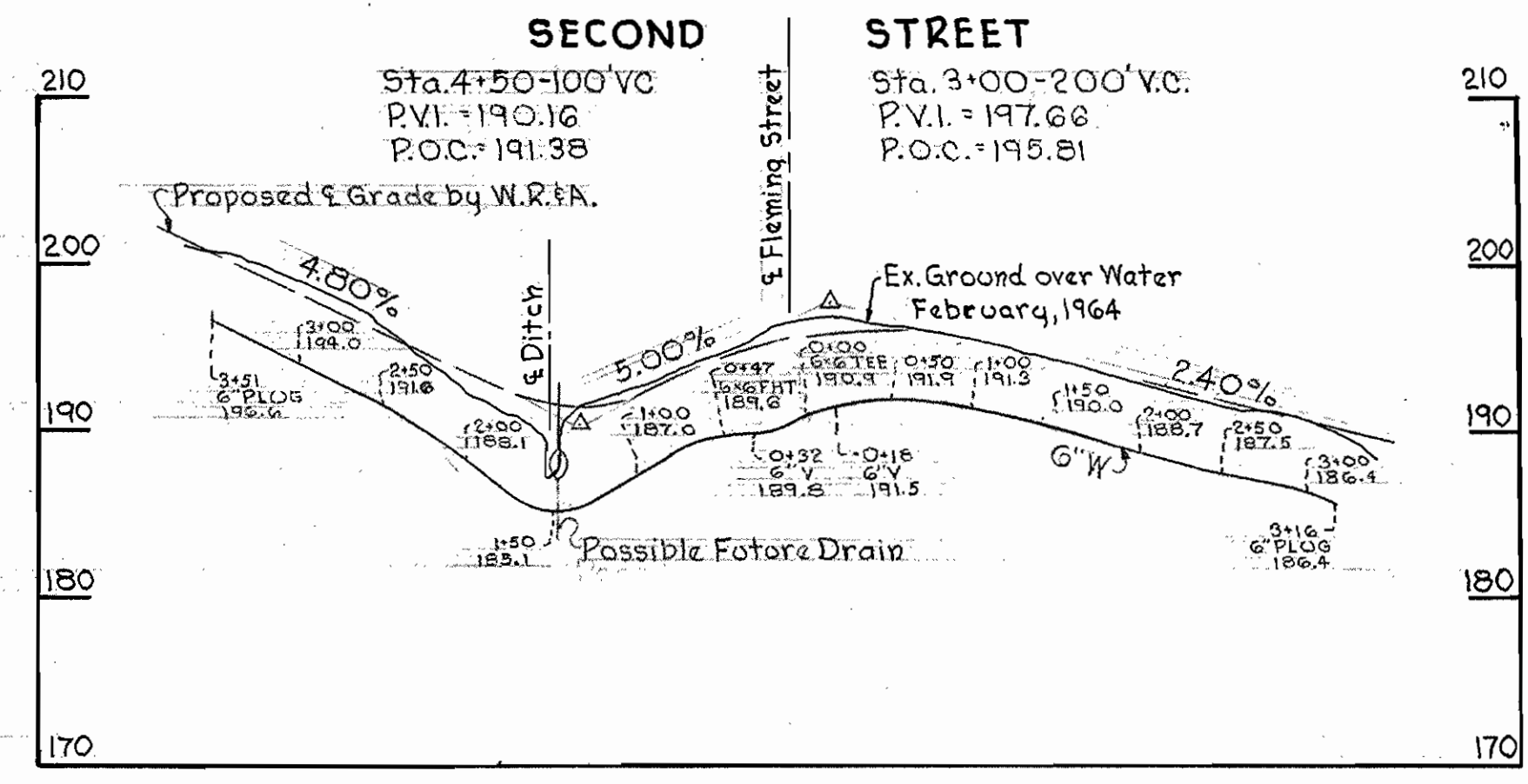
VICINITY MAP
Scale: 1" = 600'

GENERAL NOTES

1. Approximate location of existing mains are shown. The Contractor shall take all necessary precautions to protect existing mains and services and maintain uninterrupted supply. Any damage incurred shall be repaired immediately.
2. All pipe elevations shown are in vert. elevations.
3. The Contractor shall locate existing utilities a minimum of two weeks in advance of construction operations in vicinity of utilities.
4. For all standard details see standard bounds in Specifications.
5. All water mains to be C.I.P. or D.I.P. and have a minimum of 3 1/2' cover.
6. Block all fittings with concrete, see standard details bound in Specifications.
7. Bore line elevations on fire hydrants shall be set as directed by the Engineer in the field.
8. All Fire Hydrants shall be buttressed with concrete in accordance with Standard Detail W-4.
9. House Connections shall be constructed only where and if directed by the Engineer in the field.
10. The Contractor shall notify the Telephone Company prior to any construction activities in the vicinity of the Telephone cables by calling collect anytime 393-3553 in Baltimore, Maryland.



PROFILES
Scale: Hort. 1" = 100'
Vert. 1" = 10'



Kenneth A. McCord

Contract No. 249-W

WHITMAN, REQUARDT & ASSOCIATES ENGINEERS 1304 ST. PAUL ST. BALTIMORE, MARYLAND	HOWARD COUNTY METROPOLITAN COMMISSION 6-11-68 DATE <i>W. O. G.</i> CHIEF ENGINEER	CONTRACT NO. 249-W	PLAN AND PROFILE OF WATER MAINS	ELECTION DISTRICT GUILFORD NO. 6	DRAWING NO. 1 OF 1 SCALE AS SHOWN 30 SW 34
---	---	--------------------	------------------------------------	-------------------------------------	--

W. O. 6021-2

August 28, 1968 F.B. 3133 f 3114
AS BUILT

WS 249-W/1