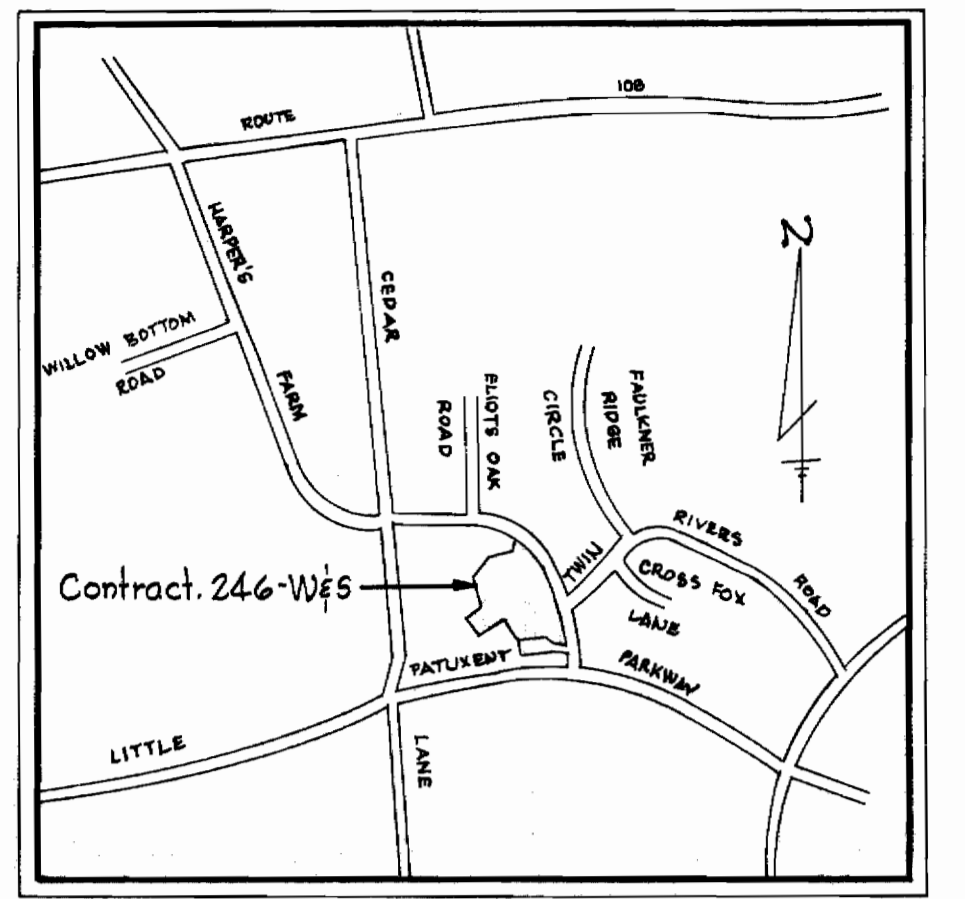


N ^o	Date	Revision
1	1-30-69	Revised Bury line elevation
2	2-28-69	Revised dimensions to MH 3132 and 8"x6" F.H.T.

Note:
Rim elevations and Bury Line elevations for this contract were developed from proposed contours shown on Matz, Childs and Associates Grading Plan D1-2-A, dated July 28, 1968. (Last Rev. Date 11-6-68).



VICINITY MAP
Scale: 1" = 2100'

WR&A BM MH#4 Elev. 451.45
RR Spike in root of 30" Oak, 55' left of Sta. 1+00, on top south stream bank.

Connect to Existing 8" Stub Built by others Under Contract No. 2275

Concrete Encasement between Sta. 0+50 and 0+85.

NOTE
Costs for furnishing and connecting 12" solid sleeve, 12"x4" Tee, 4"x2 1/2" in place shall be included in the unit price bid for furnishing and laying 2' Cost from service connections
12" Solid Sleeve
12"x4" Tee
4"x2 1/2"

QUANTITIES	
6" Water	40 LF
8" Water	655 LF
8" Sewer	500 LF

MATERIALS TO BE FURNISHED BY THE COMMISSION	
12"x8" T.S. & V	1
6" Valves	2
Fire Hydrants	2

STAKEOUT & DIARY IN FB # 4334



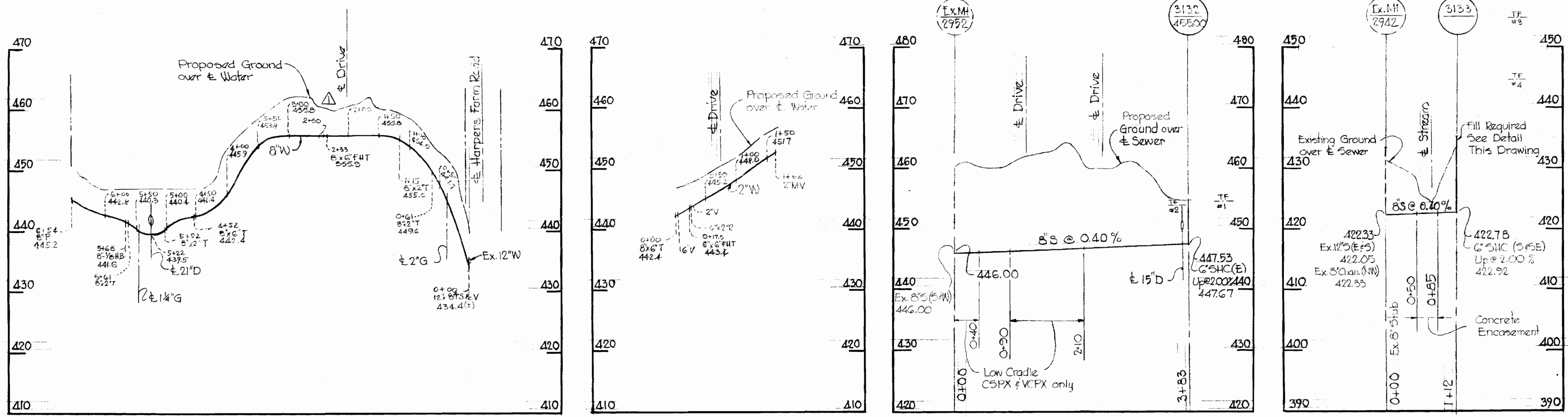
Kenneth A. McLeod

Contract C-246-W #5

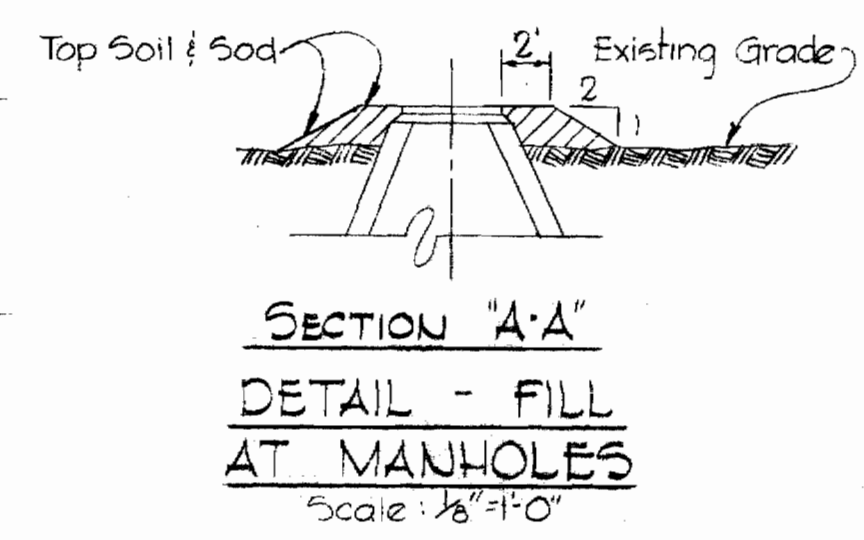
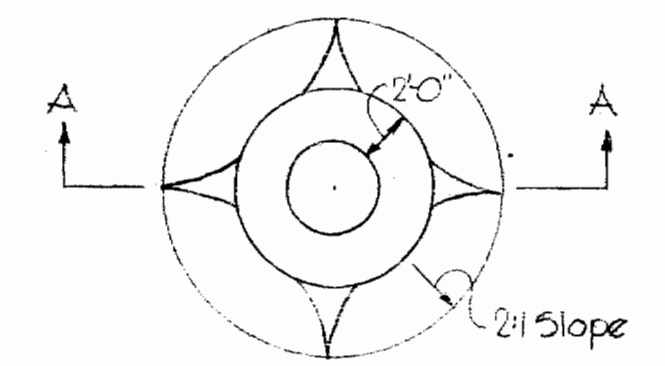
WHITMAN, REQUARDT & ASSOCIATES ENGINEERS 1304 ST. PAUL ST. BALTIMORE, MARYLAND	HOWARD COUNTY METROPOLITAN COMMISSION DATE: 7-9-69 <i>W. O. P. [Signature]</i> CHIEF ENGINEER	CONTRACT NO. C-246-W #5	PLAN OF WATER & SEWER MAINS	COLUMBIA VILLAGE OF HARPER'S CHOICE ELECTION DISTRICT CLARKSVILLE No. 5	DRAWING NO. 1	SCALE AS SHOWN <small>104-476 104-477</small>
					OF 2	

WS 246-WS/1

Utd. Date	Revision
2-28-68	Revised water mains Sta. 1+50 thru 3+00

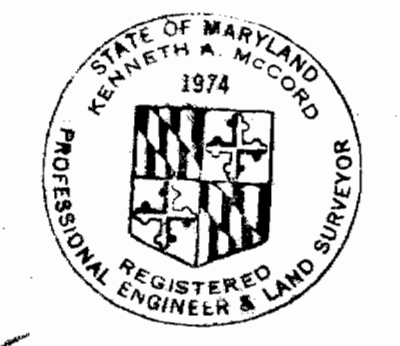


NOTE
Build Manholes 8\"/>



GENERAL NOTES

1. Approximate location of existing mains are shown. The Contractor shall take all necessary precautions to protect existing mains and services and maintain uninterrupted supply. Any damage incurred shall be repaired immediately.
2. All pipe elevations shown are invert ϕ elevations.
3. The Contractor shall locate existing utilities a minimum of two weeks in advance of construction operations in vicinity of utilities.
4. For all standard details see standards bound in Specifications.
5. All water mains to be CIP or DIP and have a minimum of 3 1/2' cover.
6. Block all fittings with concrete, see standard details bound in Specifications.
7. Bury Line elevations on fire hydrants shall be set to the elevations shown on the drawings.
8. All Fire Hydrants shall be strapped to Tees and buttressed in accordance with Standard Details W-4, W-5, W-G and W-GA.
9. Clear all utilities by a minimum of 6', clear all poles by 2'-0" minimum or tunnel as required.
10. The Contractor shall provide a joint in all sewer mains within 2'-0" of exterior manhole walls.
11. All manholes shall be 4'-0" inside diameter.
12. All Sewer pipe shall be VCPX, CSPX or ACP Class 2400.



Kenneth A. McLeod

Contract C-246-WF5

WHITMAN, REQUARDT & ASSOCIATES ENGINEERS 1304 ST. PAUL ST. BALTIMORE, MARYLAND	HOWARD COUNTY METROPOLITAN COMMISSION 7-9-68 DATE	CONTRACT NO. C-246-WB5 HOWARD COUNTY METROPOLITAN COMMISSION DATE	PROFILES OF WATER & SEWER MAINS	COLUMBIA VILLAGE OF HARPER'S CHOICE ELECTION DISTRICT CLARKSVILLE No. 5	DRAWING NO. 2 OF 2 SCALE AS SHOWN
---	---	---	------------------------------------	---	--------------------------------------

246-WS/2