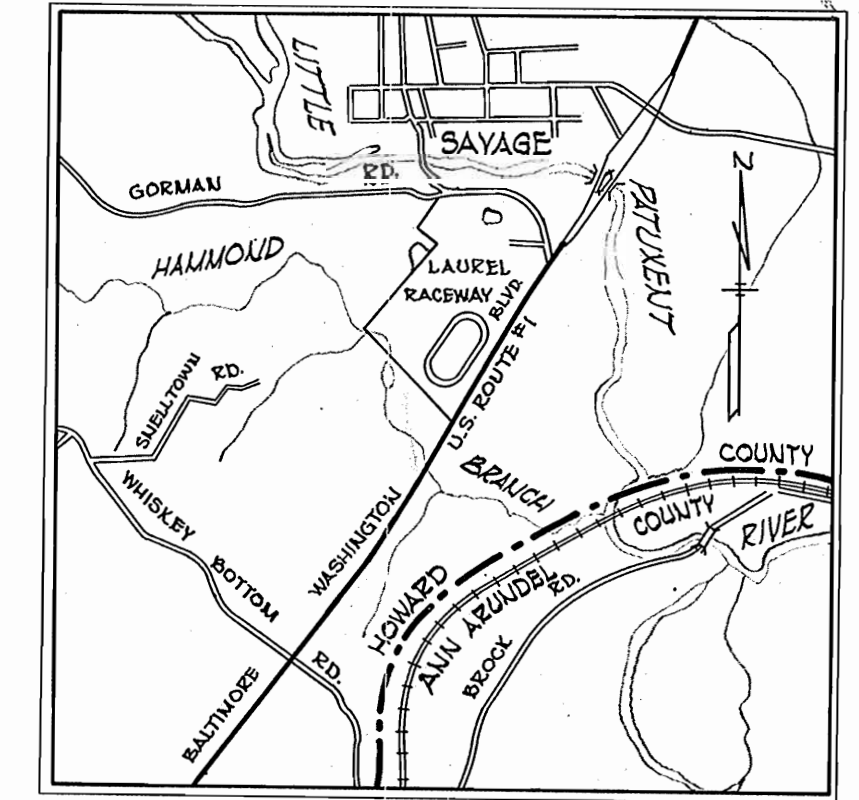


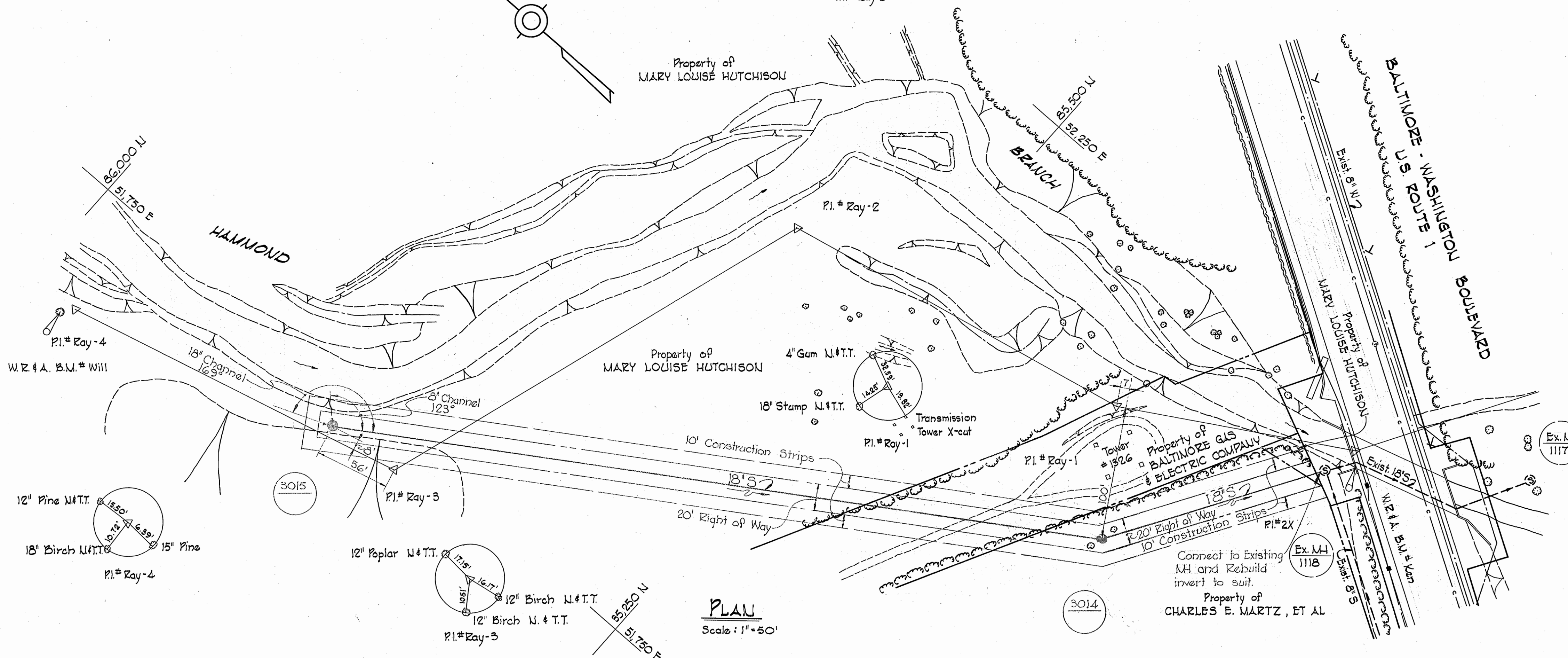
W.R.#A. B.M.# Will Elev. 165.19
 R.R. Spike in 18' Berch
 11' Lt. of P.I.# Ray-4

8' Pine N.T.T.
 12' Oak N.T.T.
 10' Oak N.T.T.
 P.I.# Ray-2

W.R.#A. B.M.# Ken Elev. 159.18
 2' cut in S.W. corner of
 concrete headwall over
 Hammonds Branch, 10' Right
 of P.I.# 2-X

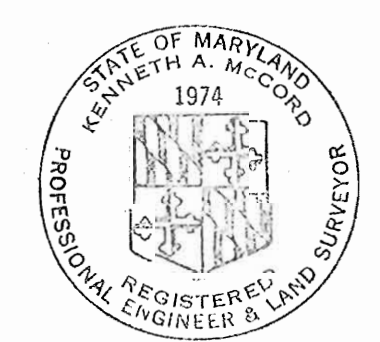
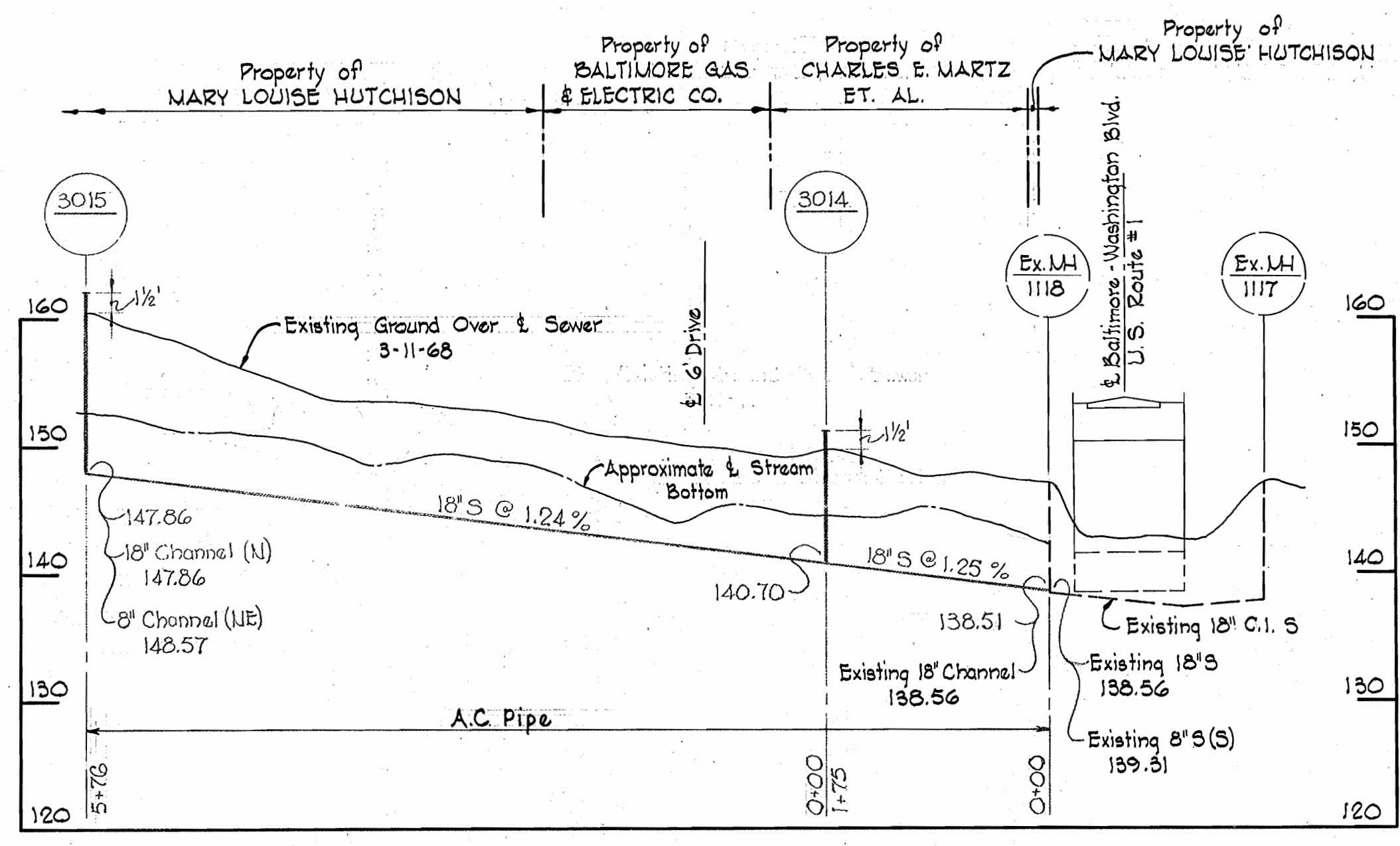


VICINITY MAP
 Scale: 1" = 1/2 mile



GENERAL NOTES

1. Approximate location of existing mains are shown. The Contractor shall take all necessary precautions to protect existing mains and services and maintain uninterrupted supply. Any damage incurred shall be repaired immediately.
2. All pipe elevations shown are invert elevations.
3. The Contractor shall locate existing utilities a minimum of two weeks in advance of construction operations in vicinity of utilities.
4. For all standard details see standards bound in Specifications.
5. Clear all utilities by a minimum of 6', clear all poles by 2'-0" minimum or tunnel as required.
6. Cost of Grouted Rip Rap to be included in unit price bid for furnishing and laying of sewer mains.
7. The Contractor shall provide a joint in all sewer mains within 2'-0" of exterior manhole walls.



Kenneth A. Moore

Contract No. 240-S

WHITMAN, REQUARDT & ASSOCIATES ENGINEERS 1304 ST. PAUL ST. BALTIMORE, MARYLAND	HOWARD COUNTY METROPOLITAN COMMISSION 5-1-68 DATE <i>W O Pilbert</i> CHIEF ENGINEER	CONTRACT NO. 240-S	PLAN AND PROFILE OF SEWER MAINS	ELECTION DISTRICT GUILFORD NO. 6	DRAWING NO. 1 OF 1 SCALE AS SHOWN 48 NE 18-1
---	---	--------------------	------------------------------------	-------------------------------------	--

WS 240-S/1