

*W. O. Galt*

**WHITMAN, REQUARDT & ASSOCIATES**  
ENGINEERS  
1304 ST. PAUL ST.  
BALTIMORE, MARYLAND

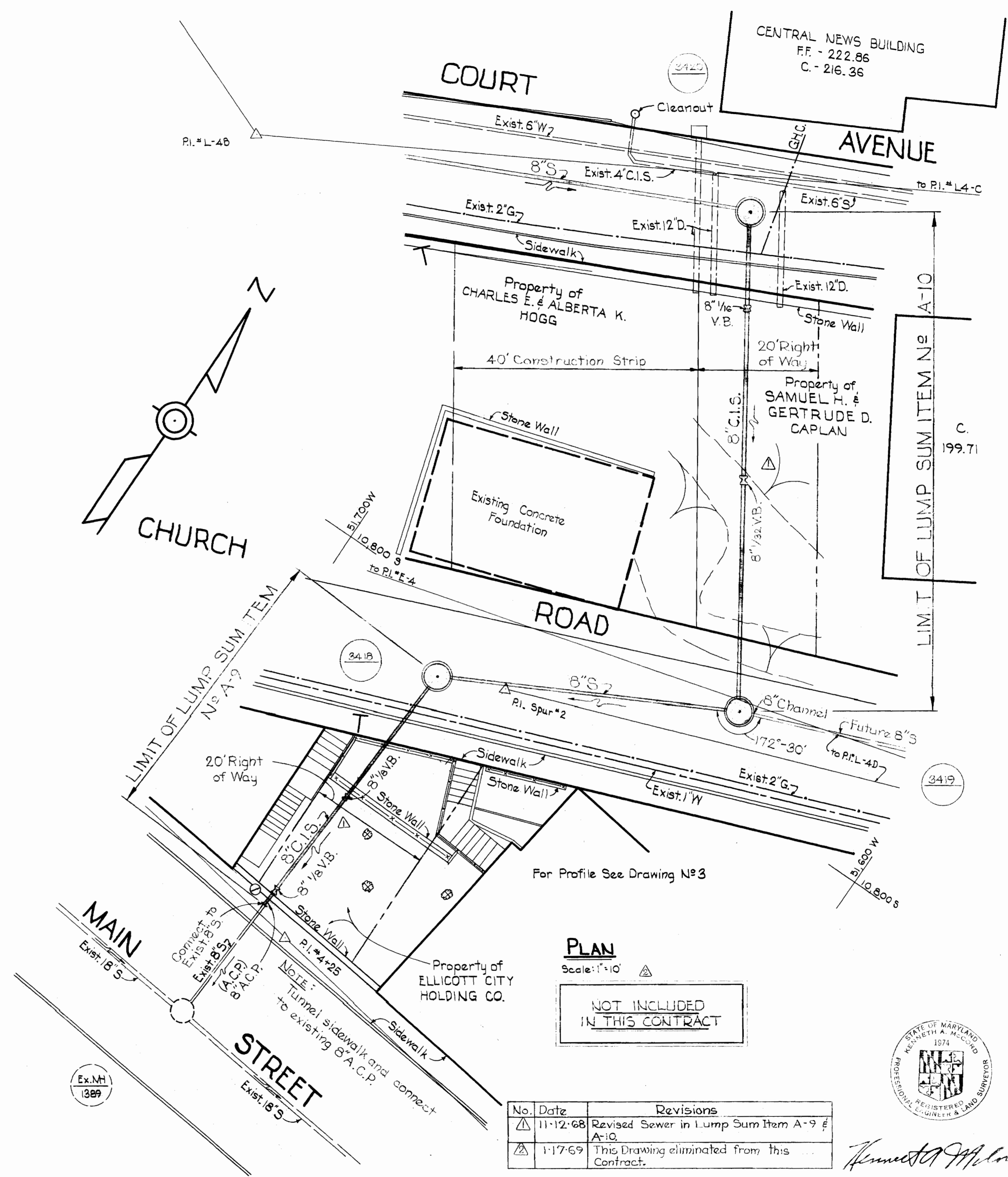
**HOWARD COUNTY METROPOLITAN COMMISSION**  
11.4.68  
W. O. Galt  
CHIEF ENGINEER

**CONTRACT NO. 2396**

**PLAN OF SEWER MAINS**

**ELECTION DISTRICT ELLICOTT CITY NO. 2**

**DRAWING NO. 1 OF 3**  
**SCALE AS SHOWN**



CENTRAL NEWS BUILDING  
 F.F. - 222.86  
 C. - 216.36

COURT AVENUE

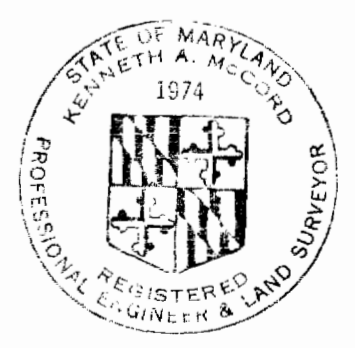
CHURCH ROAD

MAIN STREET

PLAN  
 Scale: 1"=10'

NOT INCLUDED  
 IN THIS CONTRACT

| No. | Date     | Revisions                                   |
|-----|----------|---|
| △   | 11-12-68 | Revised Sewer in Lump Sum Item A-9 & A-10   |
| △   | 1-17-69  | This Drawing eliminated from this Contract. |



*Kenneth A. McLeod*

WHITMAN, REQUARDT & ASSOCIATES  
 ENGINEERS  
 1304 ST. PAUL ST.  
 BALTIMORE, MARYLAND

HOWARD COUNTY METROPOLITAN COMMISSION  
 DATE 11-4-68 *w o Palant*  
 CHIEF ENGINEER

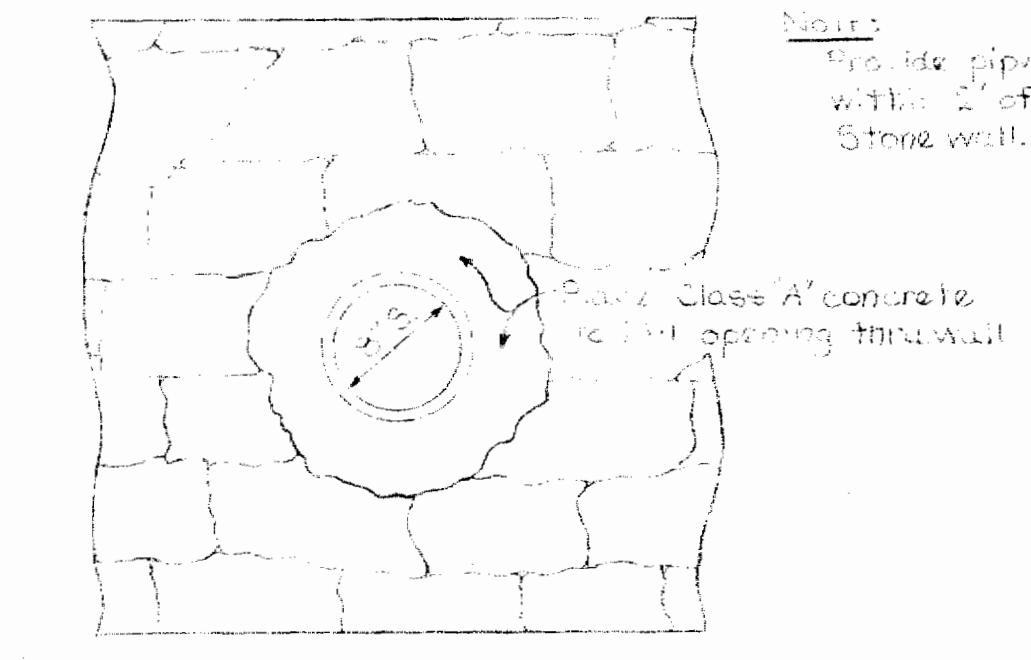
CONTRACT NO. 239-S

PLAN OF  
 SEWER MAINS

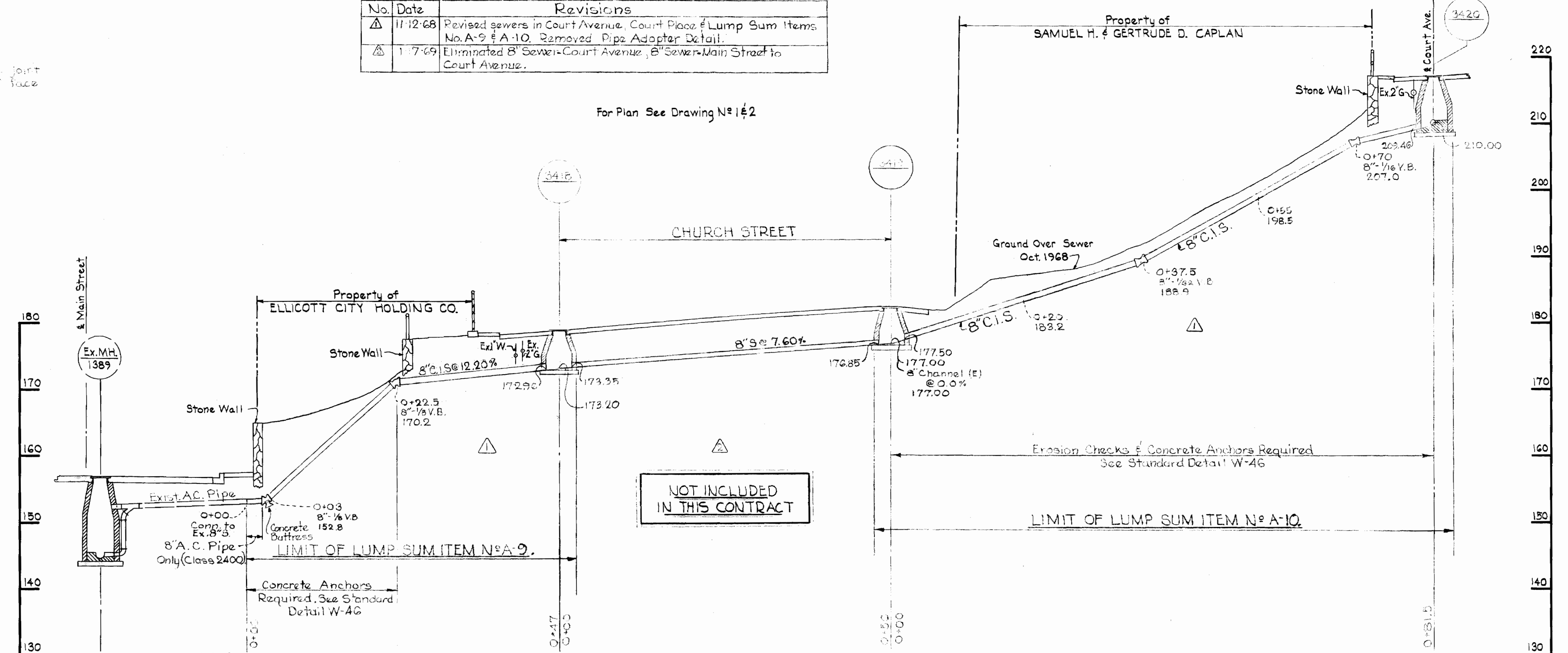
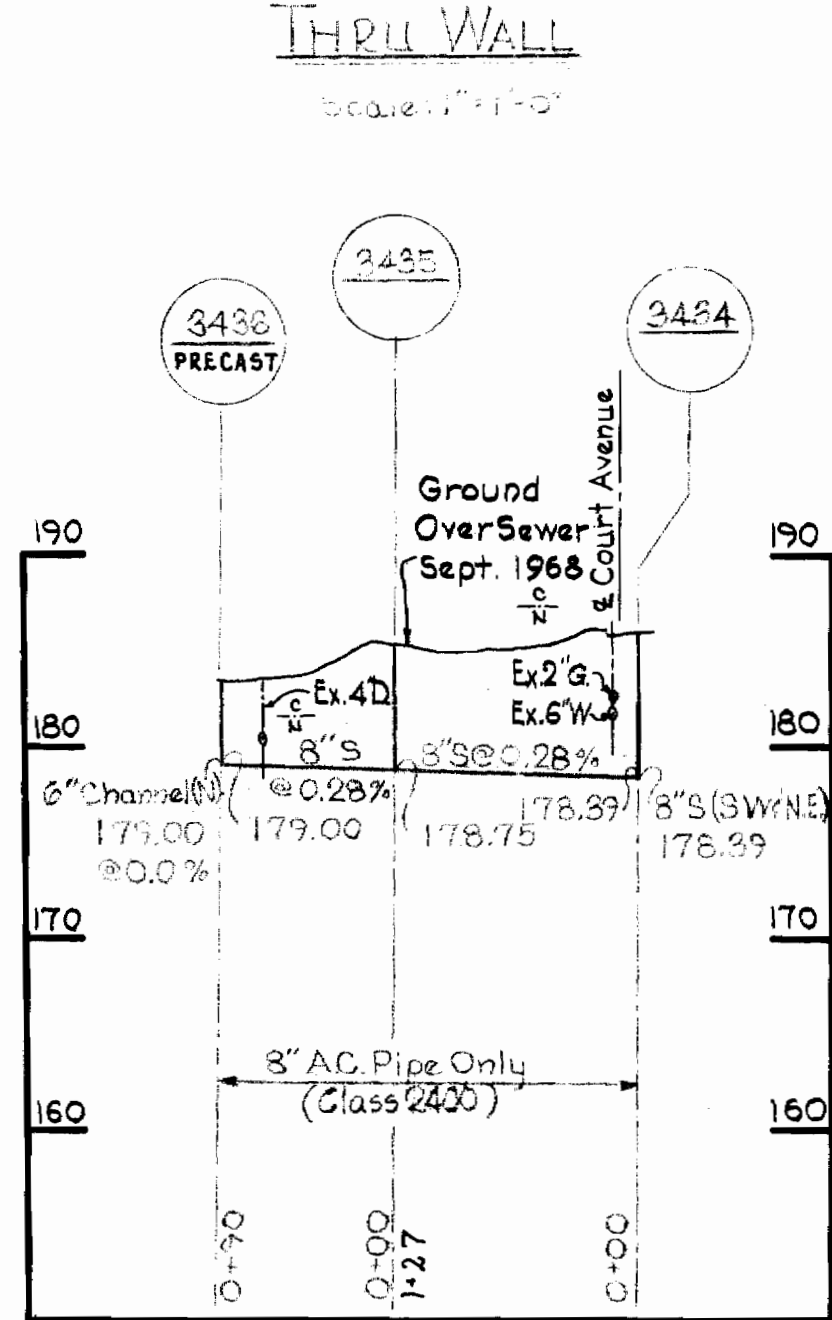
ELECTION DISTRICT  
 ELLICOTT CITY NO. 2

CONTRACT 239-S  
 DRAWING NO. 2 OF 3  
 SCALE AS SHOWN

| No. | Date     | Revisions   |
|-----|----------|---|
| Δ   | 11-12-68 | Revised sewers in Court Avenue, Court Place & Lump Sum Items No. A-9 & A-10. Removed Pipe Adapter Detail. |
| Δ   | 1-17-69  | Eliminated 8" Sewer-Court Avenue, 8" Sewer-Main Street to Court Avenue.                                   |



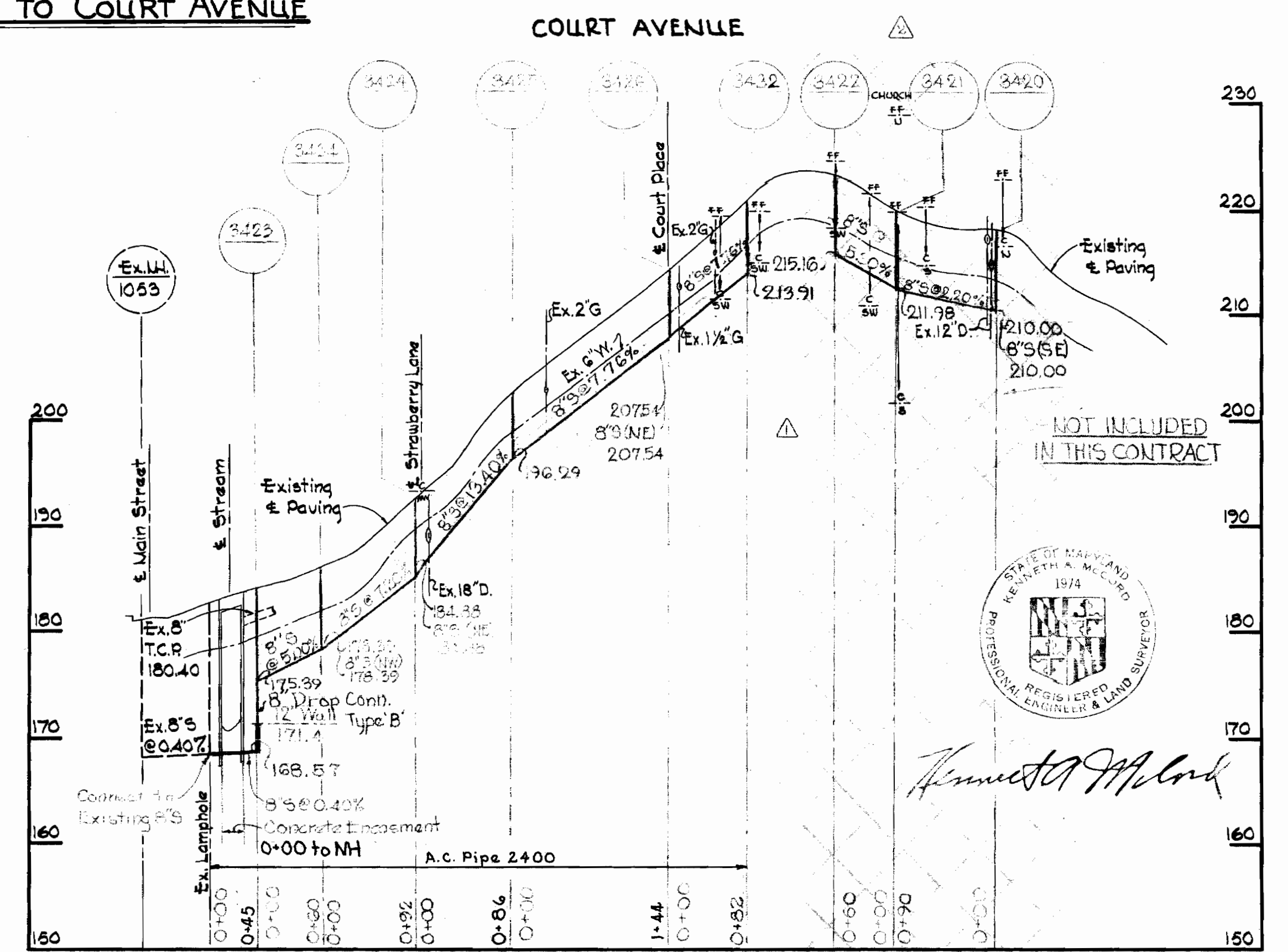
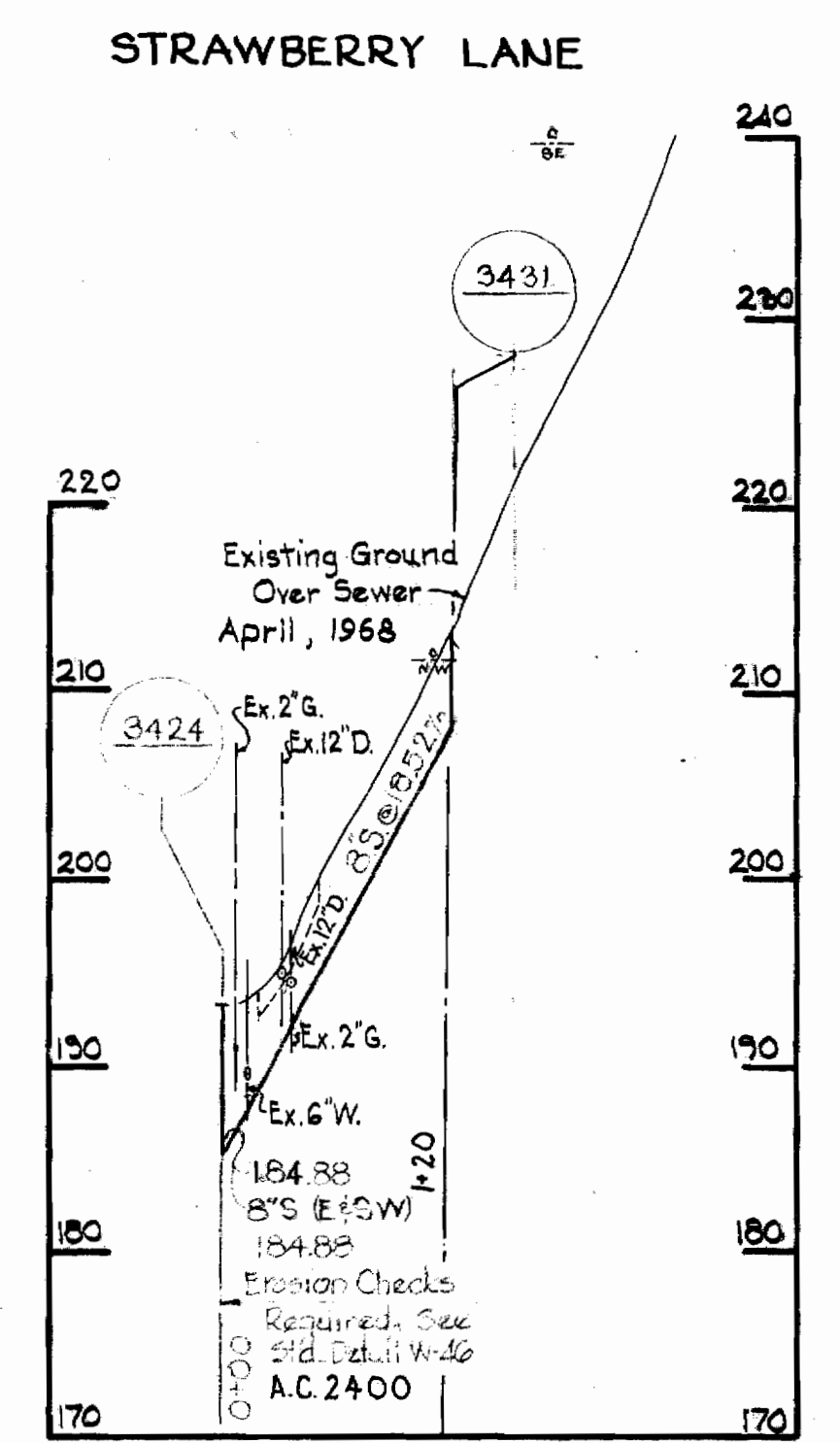
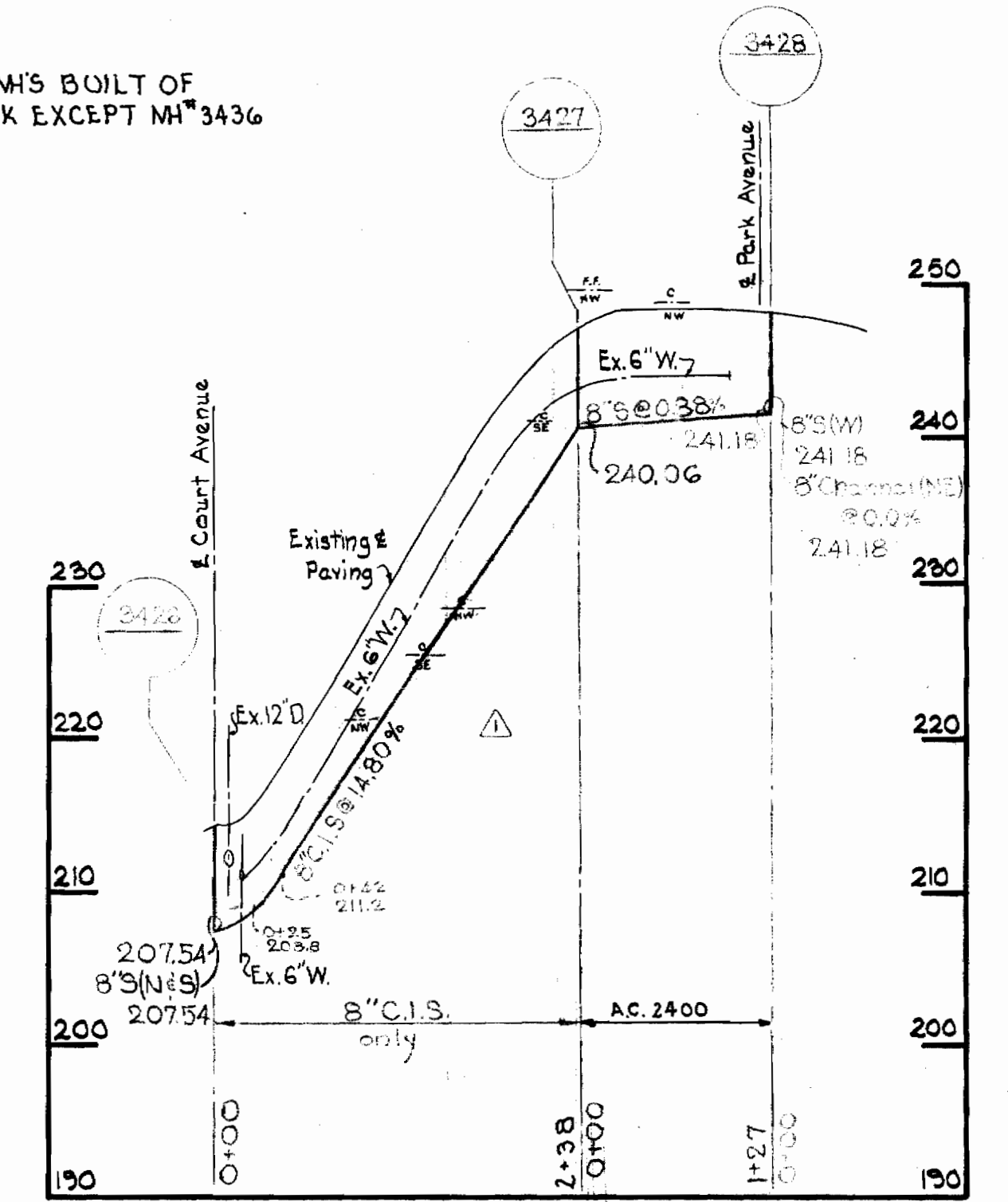
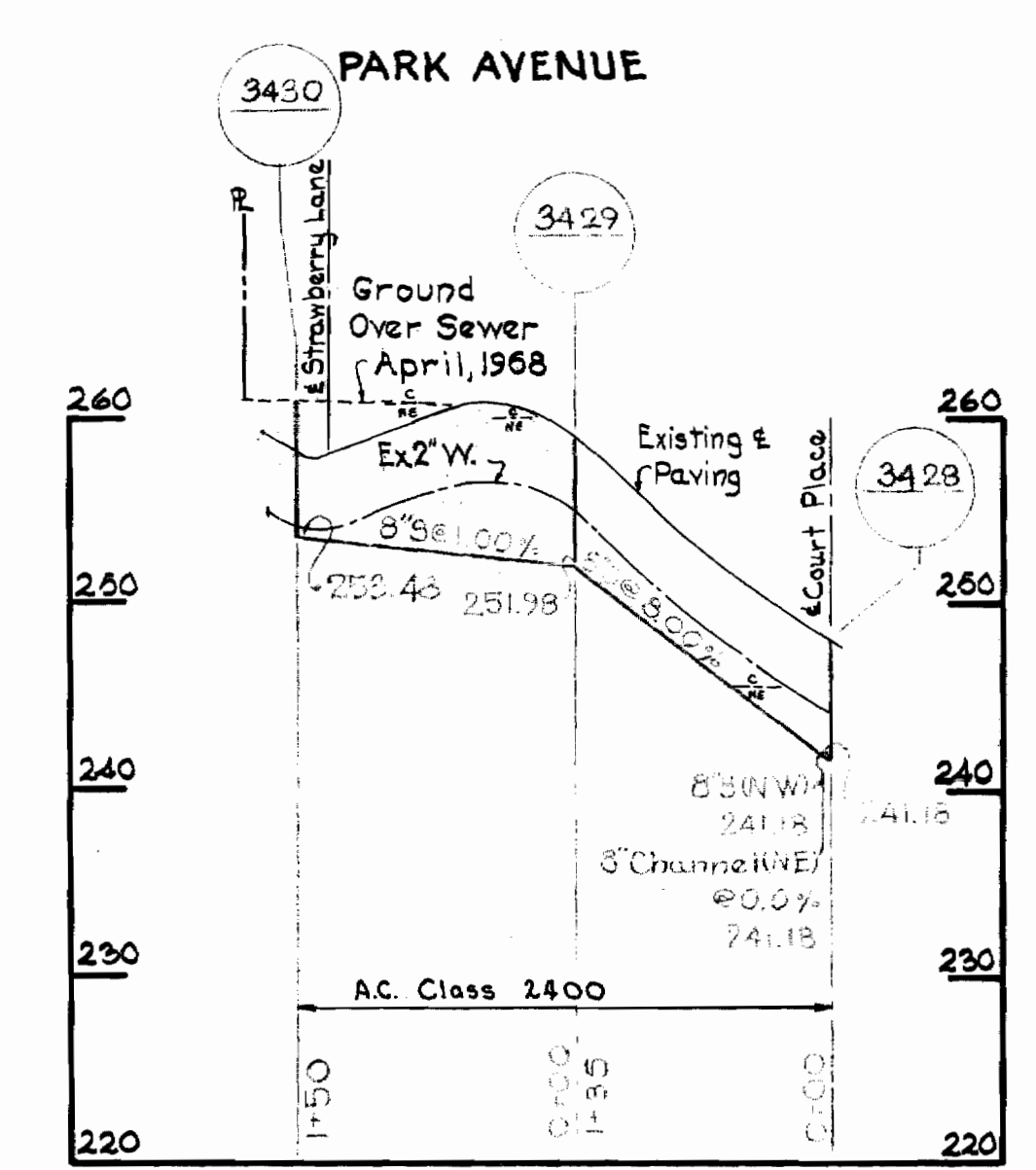
DETAIL OF REPAIRING OPENING THROUGH WALL



PROFILE OF 8" S - MAIN STREET TO COURT AVENUE

SCALE: H: 1"=10'  
V: 1"=10'

NOTE: ALL M.H.'S BUILT OF BRICK EXCEPT M.H. 3436



PROFILES

Scale: Hor: 1"=100'  
Ver: 1"=10'

WHITMAN, REQUARD & ASSOCIATES  
ENGINEERS  
1304 ST. PAUL ST.  
BALTIMORE, MARYLAND

HOWARD COUNTY METROPOLITAN COMMISSION  
DATE: 11-A-69  
w o s i l l a t  
CHIEF ENGINEER

CONTRACT NO. 239-S

PROFILES OF SEWER MAINS

ELECTION DISTRICT ELLICOTT CITY NO. 2

DRAWING NO. 3 OF 3

SCALE AS SHOWN

W. O. 6021-2

AS BUILT MARCH 10, 1969

FB 4079

239-S/3

NS