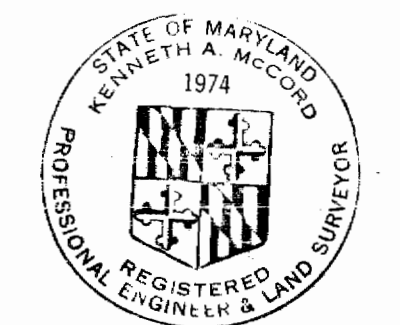


VICINITY MAP
Scale: 1"=2330'

GENERAL NOTES

1. Approximate location of existing utilities are shown. The Contractor shall take all necessary precautions to protect existing utilities and to maintain uninterrupted supply. Any damage incurred due to contractors operations shall be repaired immediately.
2. All pipe elevations are invert \ominus elevations.
3. The Contractor shall locate existing utilities a minimum of two weeks in advance of construction operations in vicinity of utilities.
4. For all standard details see standards bound in Specifications.
5. All water mains to be C.I.P or D.I.P and have a minimum of 3 1/2' cover.
6. Block all fittings with concrete, see standard details bound in Specifications.
7. Clear all utilities by a minimum of 6'; clear all poles by 2'-0" minimum or tunnel as required.
8. The Contractor shall provide a joint in all sewer mains within 2'-0' of exterior manhole walls.
9. The Contractor shall notify the Telephone Company prior to any construction activities in the vicinity of Telephone Cables by calling collect anytime 393-3553 in Baltimore, Maryland.

Note: Stakeout in FB. 4120; Diary in FB. 4120

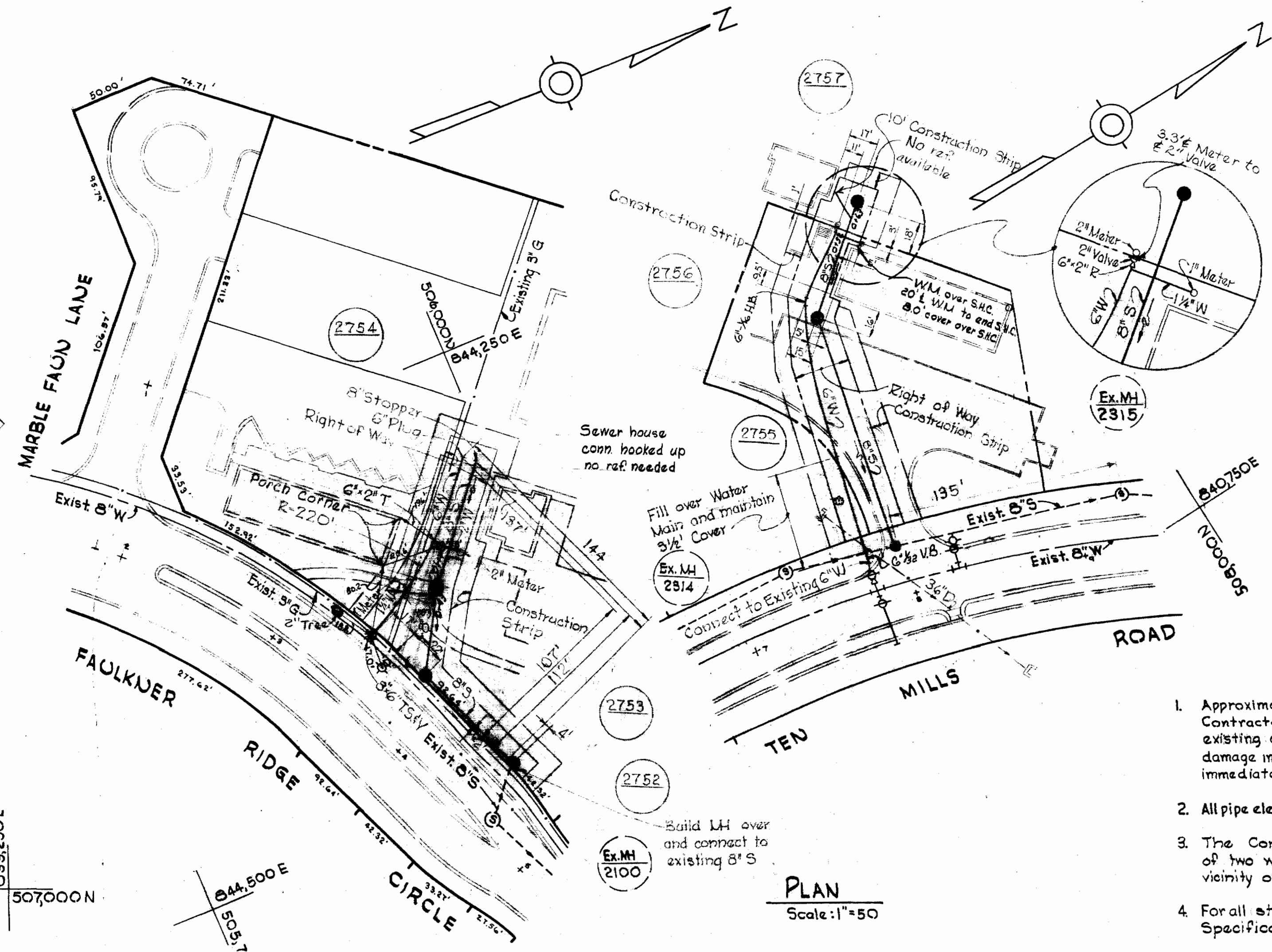


Kenneth A. McCord

Longfellow Section No. I
Faulkner Ridge Section 5
Running Brook Area I
Contract No. 231-W6S

DRAWING NO. 1 OF 1	SCALE AS SHOWN
--------------------	----------------

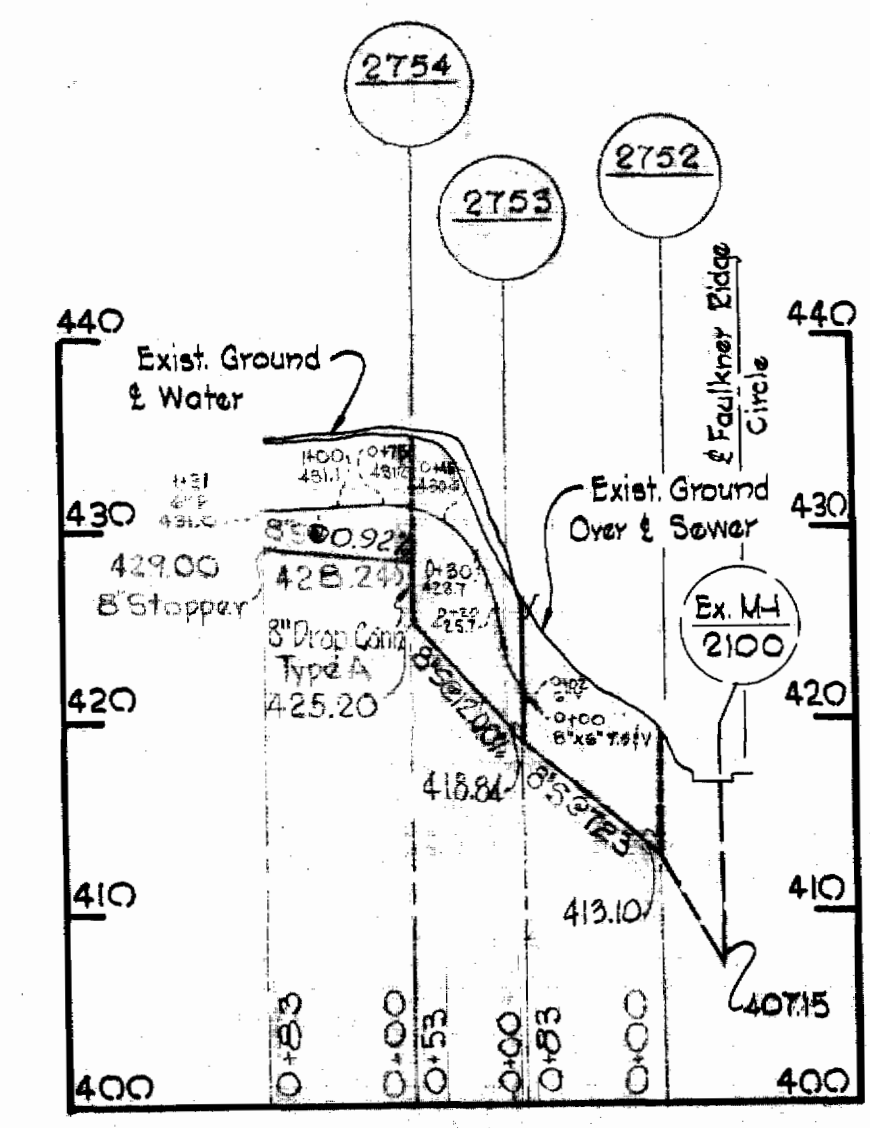
JUNE 20, 1965
AS BUILT



PLAN
Scale: 1"=50'

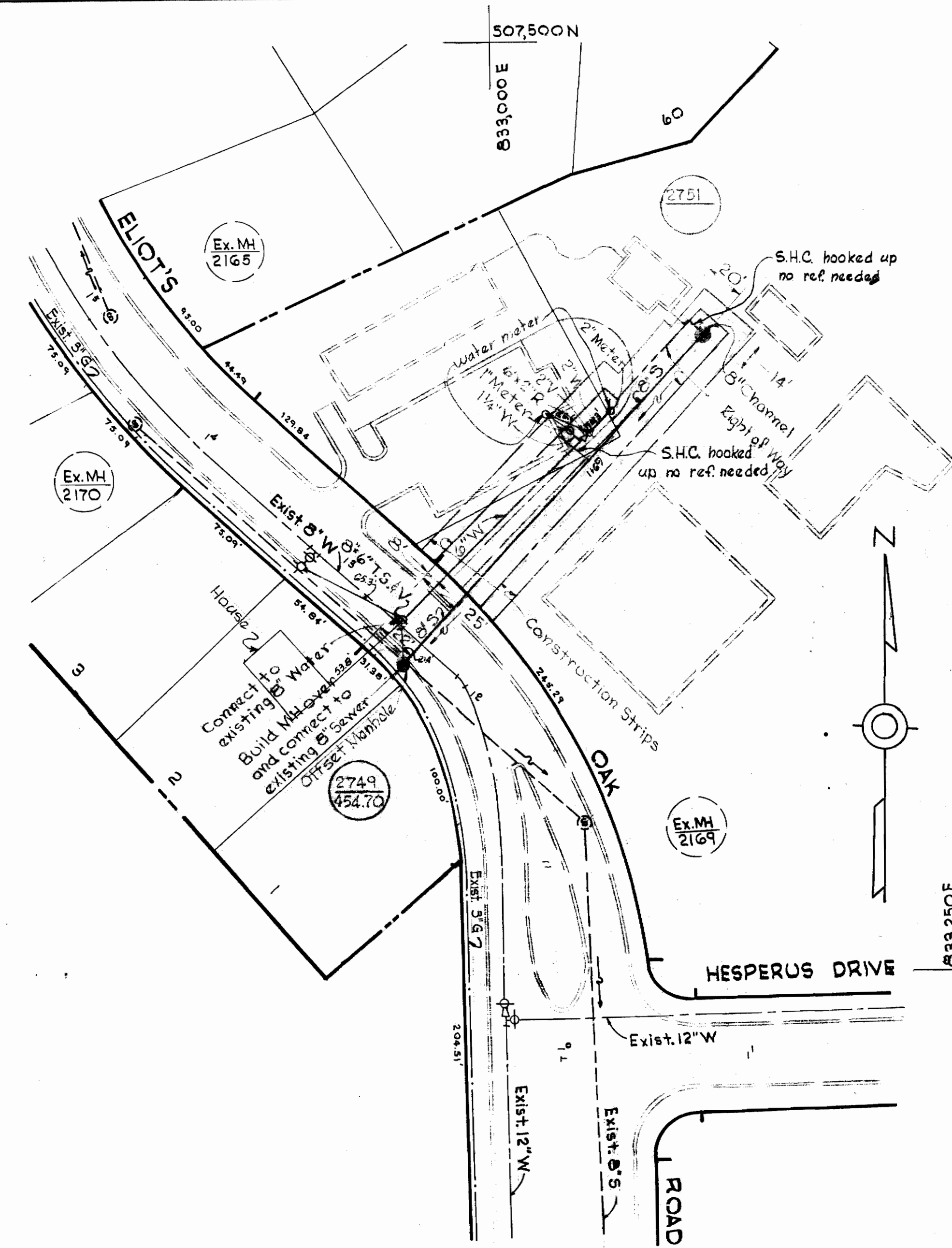
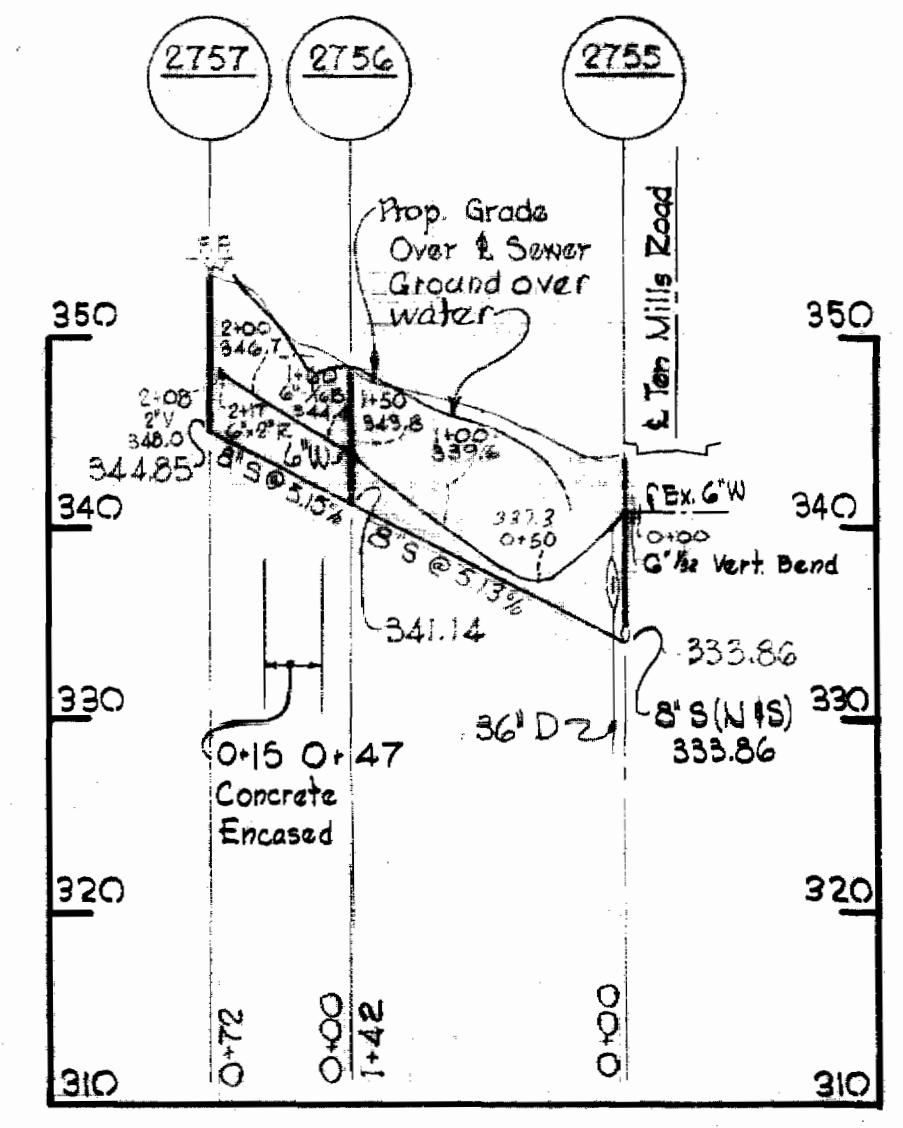
Sewer Pipe - ACP Class 2400
Water Pipe - Cast Iron

FAULKNER RIDGE

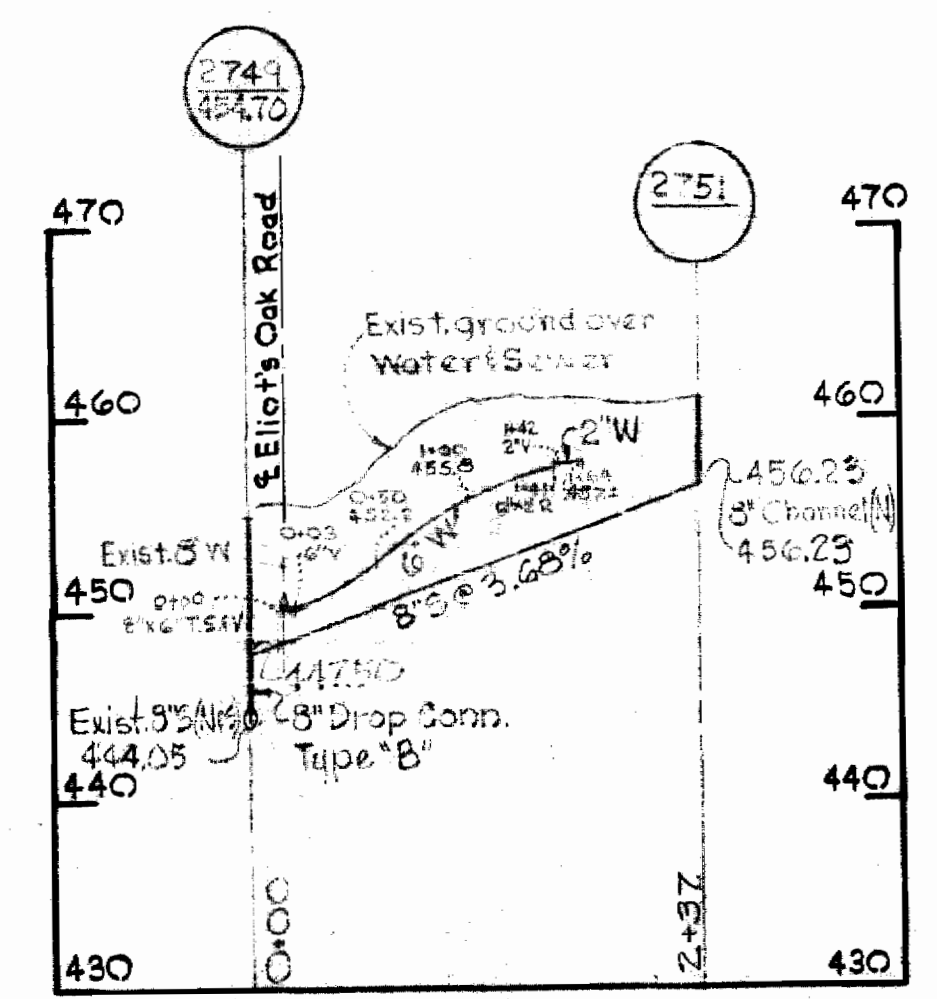


PROFILE
Scale: V-1"=10'
H-1"=100'

RUNNING BROOK



LONGFELLOW



WHITMAN, REQUARDT & ASSOCIATES
ENGINEERS
1304 ST. PAUL ST.
BALTIMORE, MARYLAND

HOWARD COUNTY METROPOLITAN COMMISSION
DATE: 2-15-68
W. O. Libbert
CHIEF ENGINEER

CONTRACT NO. 231-W6S

PLAN & PROFILE OF
WATER & SEWER MAINS

COLUMBIA
ELECTION DISTRICT - CLARKSVILLE No. 5

231-WS/1