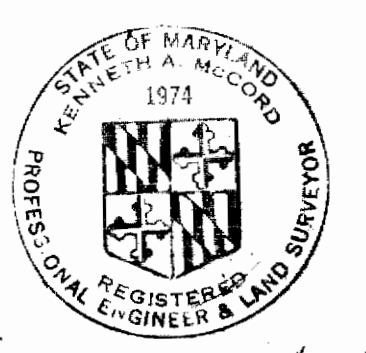


**CONTRACT 224-W
GUILFORD ROAD
WATER PUMPING STATION
HOWARD COUNTY METROPOLITAN COMMISSION
ELlicOTT CITY, MARYLAND**



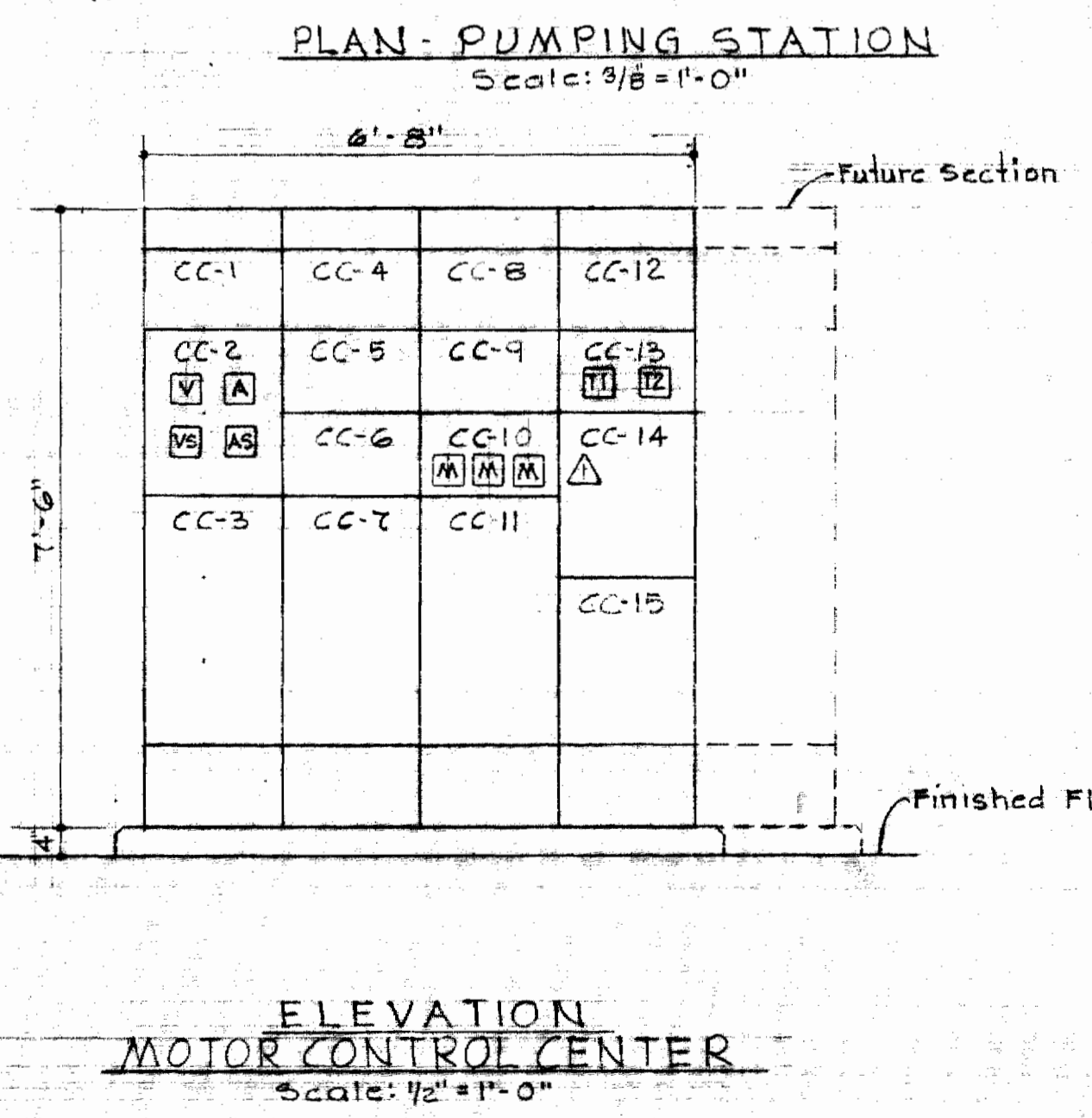
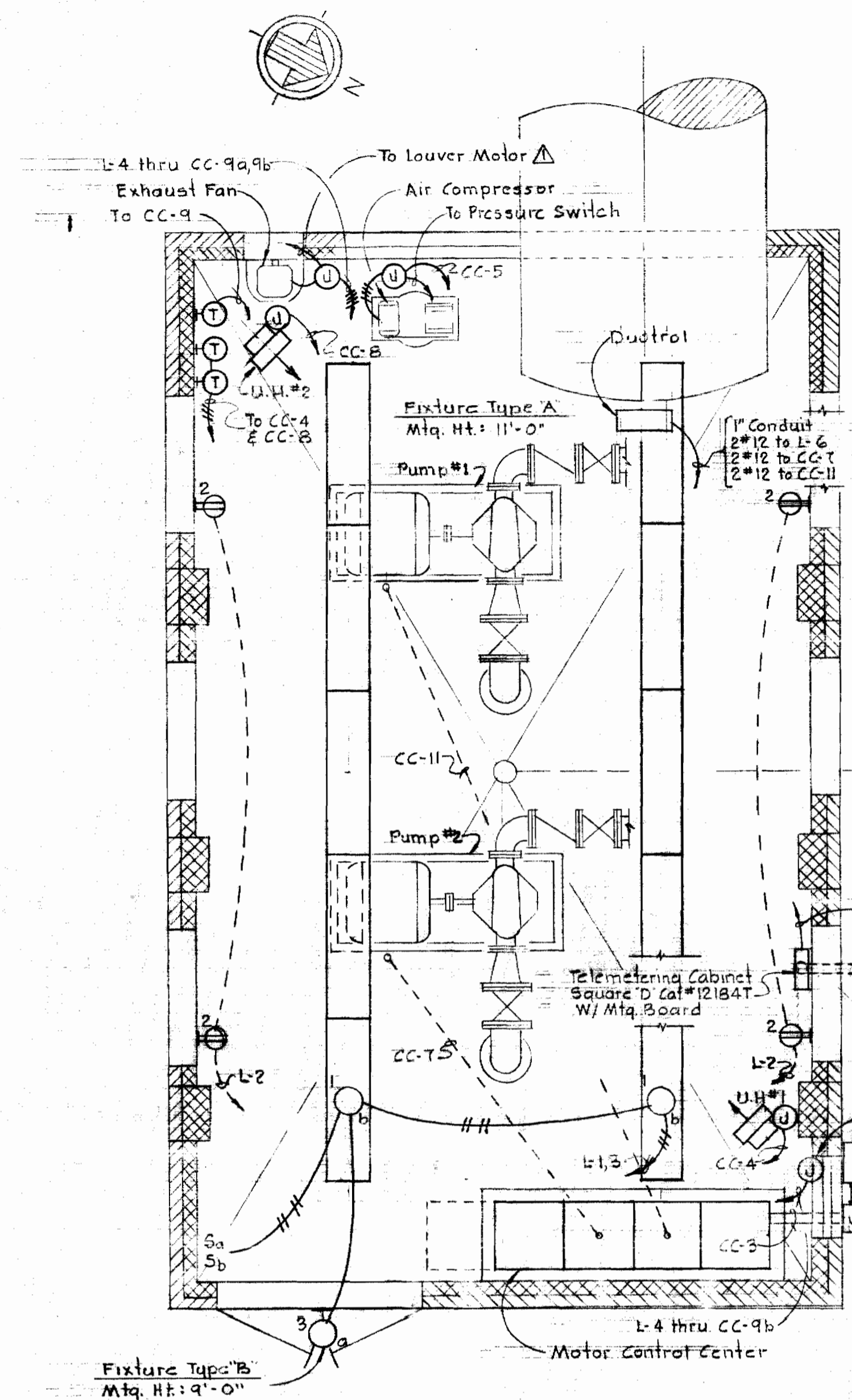
Kenneth A. Hester

Δ	7-2-68	Revised Surface Course
No.	Date	Revision

WHITMAN, REQUARDT & ASSOCIATES ENGINEERS 1304 ST. PAUL ST. BALTIMORE, MARYLAND	HOWARD COUNTY METROPOLITAN COMMISSION 6-28-68 <i>W. O. Goz1</i> DATE CHIEF ENGINEER	CONTRACT NO. 224-W	VICINITY MAP, SITE PLAN AND DETAILS	ELECTION DISTRICT GUILFORD NO. 6	DRAWING NO. 1 OF 3	SCALE AS SHOWN
--	--	---------------------------	--	---	---------------------------	-----------------------

WS 224-W/1

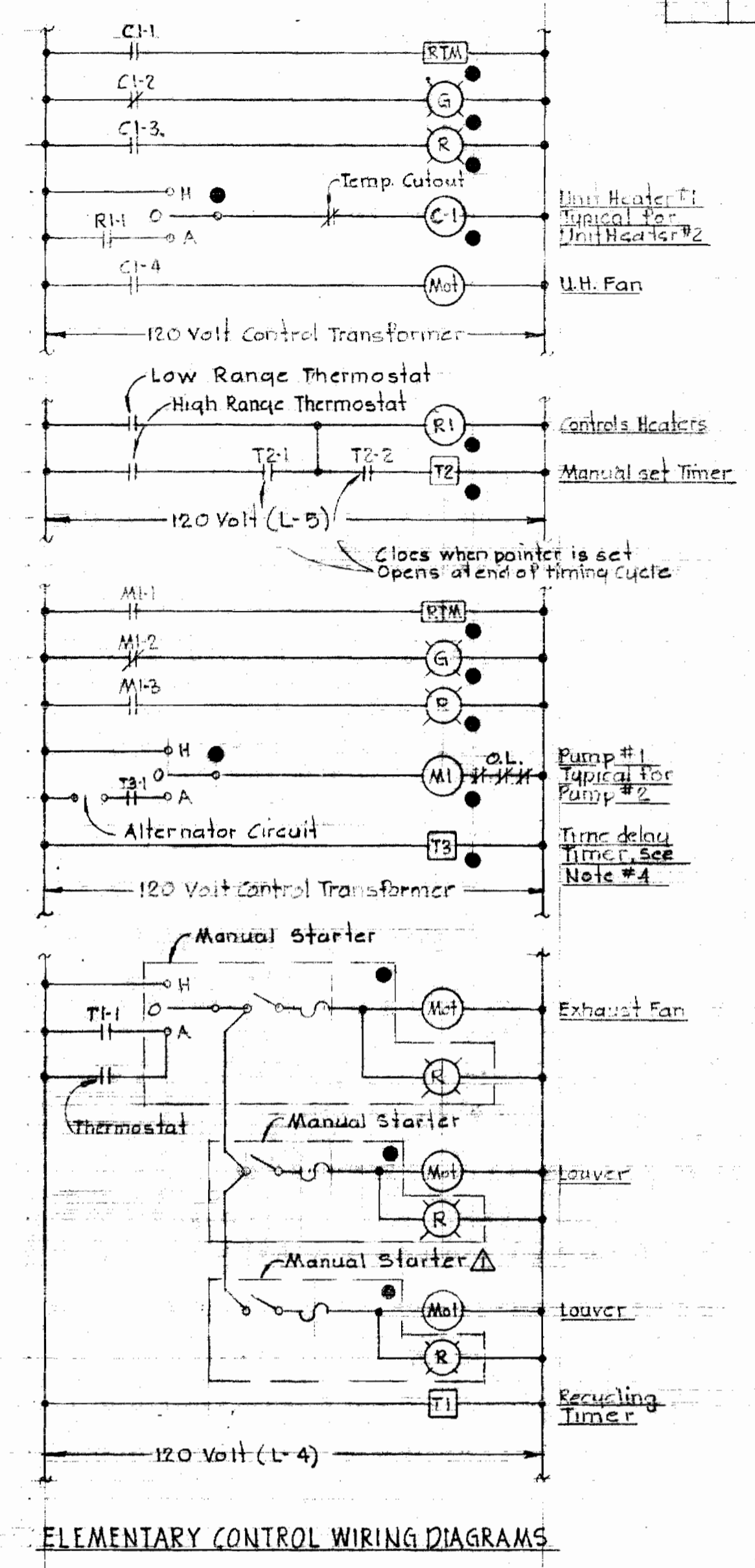
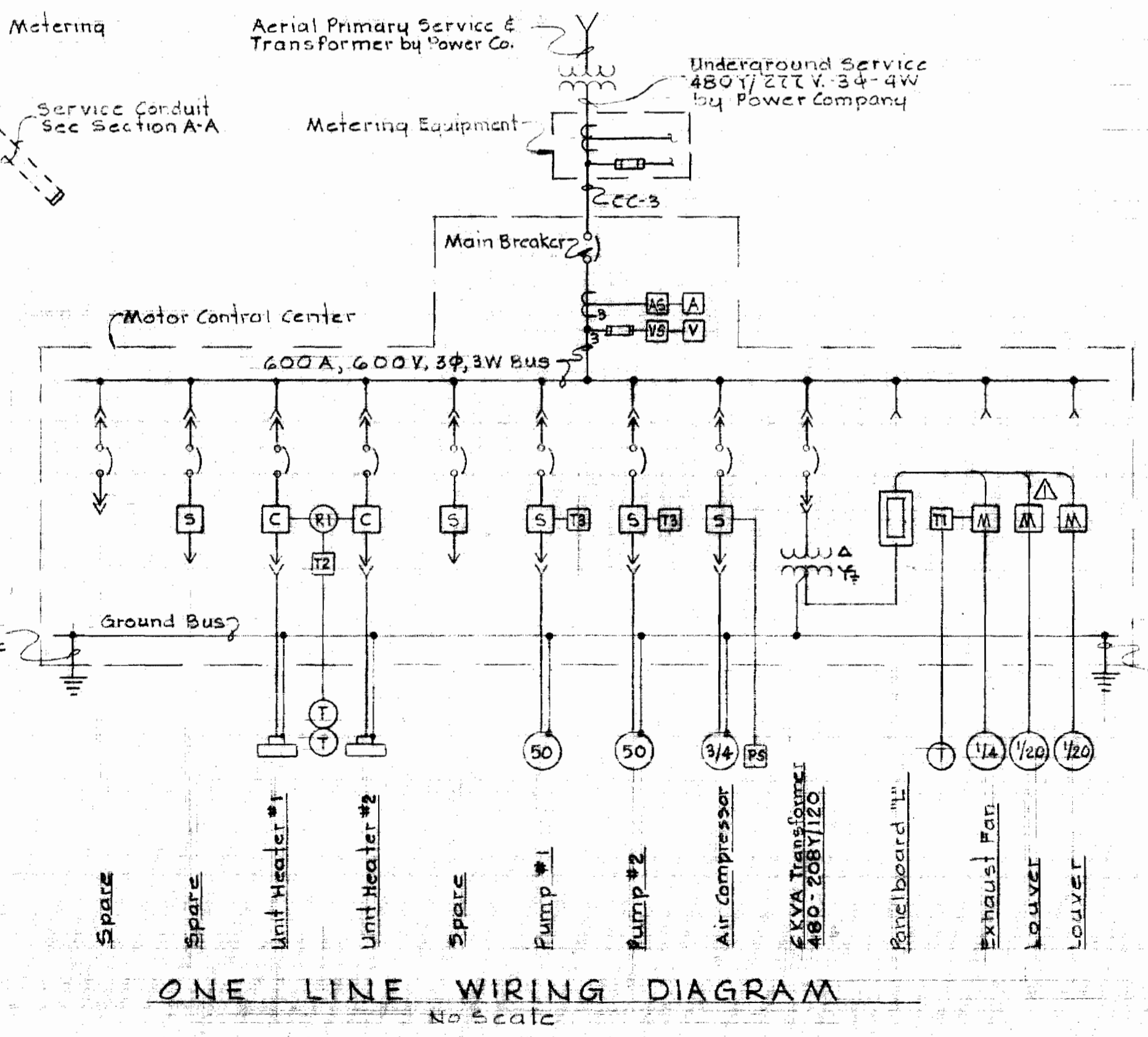
No.	Date	Revisions and Additions
1	7-2-68	Added Manual Starter and Wiring for Louver Motor



MOTOR CONTROL CENTER SCHEDULE														
Unit & Run No.	Name Plate Data	Device Description	HP	Aux. Disc.	Frame	Breaker Pole	Calib.	A.I.C.	Wire No.	Size	Type	For	Grd. Wire	Conduit
CC-1	Blank	Space & Bus												
CC-2	Ammeter Voltmeter	Ammeter & switch Voltmeter & switch									By Manufacturer			
CC-3	Main Breaker	Circuit Breaker				400A	3	250	5	3	4/0 USE	Power	2	2 1/2"
CC-4	Unit Heater #1	Combination Contactor Size 1, FVNR	1 1/2	ab, c, d, f		100A	3	20	4	3	12 THW	Power Control	14	1"
CC-5	Air Compressor	Combination Starter Size 1, FVNR	3/4	ab, c, d, f		100A	3	15	4	3	12 THW	Power Control	14	1"
CC-6	Blank (Spare)	Combination Starter Size 1, FVNR		ab, c, d, f		100A	3	20	4					
CC-7	Pump #1	Combination Starter Size 3, FVNR	50	ab, c, d, f		225A	3	150	6	3	4 THW	Power	8	1 1/2"
CC-8	Unit Heater #2	Combination Contactor Size 1, FVNR	1 1/2	ab, c, d, f		100A	3	20	4	3	12 THW	Power Control	14	1"
CC-9a	Exhaust Fan	Manual starter								4	12 THW	Power		3/4"
CC-9b	Louver Motors	Manual starters								2	12 THW	Power		3/4"
CC-10	Blank (Spare)	Combination Starter Size 1, FVNR		ab, c, d, f		100A	3	20	4					
CC-11	Pump #2	Combination starter Size 3, FVNR	50	ab, c, d, f		225A	3	150	6	3	4 THW	Power	8	1 1/2"
CC-12a	Blank (Spare)	Circuit Breaker				100A	3	15	4					
CC-12b	6KVA Transformer	Circuit Breaker				100A	3	15	4					
CC-13a	Exhaust Fan	Timer T1												
CC-13b	Unit Heaters	Timer T2												
CC-14	Lighting Panel	Panelboard #1 208Y/120V-3P-4W												
CC-15	6KVA Transformer	480-208Y/120 V												

BREAKER A.I.C. LEGEND	
A	15,000 @ 480 Volts
5	20,000 @ 480 Volts
6	25,000 @ 480 Volts
7	30,000 @ 480 Volts
B	35,000 @ 480 Volts

MCC AUXILIARY DESCRIPTION	
a	Red & Green Indicating Lights
b	Hand-Off-Automatic Switch
c	Third Overload Relay
d	480-120 V. Control Transformer
f	Running Time Meter



- ### ELECTRICAL LEGEND
- Outlet Incandescent
 - Outlet Fluorescent
 - ⊕ Junction Box
 - ⊕ Outlet Duplex Convenience
 - S Switch Single Pole
 - ⊕ Thermostat-mounted on wood block
 - ⊕ Unit Heater
 - Conduit in slab
 - - - Conduit stubbed up
 - Conduit on ceiling or wall
 - /// Home run to Control Center. No. of arrows indicate No. of wires. Where no cross lines appear, 2 conductors are implied. See Motor Control Center S.C. Schedule
 - ⊕ Air Circuit Breaker manually operated drawout
 - S Magnetic Starter - Full Voltage
 - C Magnetic Contactor
 - T1 Timer - number as indicated
 - ⊕ Current Transformer
 - ⊕ Power Transformer
 - ⊕ Ground
 - ⊕ Fuse
 - > Incoming Line
 - V Voltmeter
 - VS Voltmeter switch
 - A Ammeter
 - AS Ammeter switch
 - M Manual Starter
 - BO Motor with horse power
 - - - Bundled Cable - Power - 600V or less
 - - - Underground Conduit - Power
 - - - Underground Conduit - Telephone

- ### NOTES
- For lighting fixture types, see Specifications
 - For panelboard schedule, see Specifications
 - For outside Electrical work, see Site Plan, Drawing #1
 - Timer T3 shall be Eagle Bulletin 158, Symbol #CG10A6 with PDC-190 base & CG10-95 latch

- ### LOCATION SYMBOLS
- Device located in Motor Control Center

