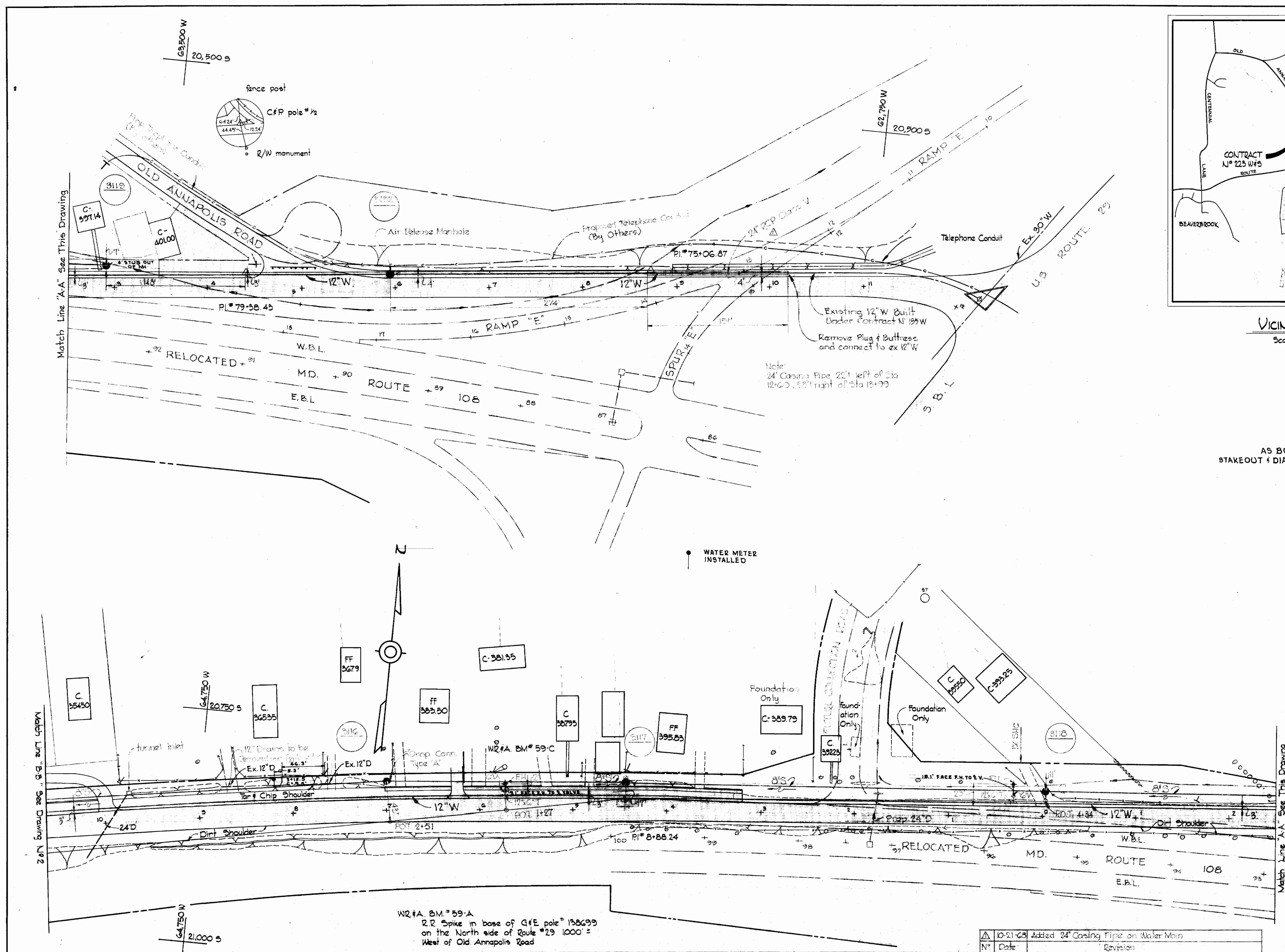


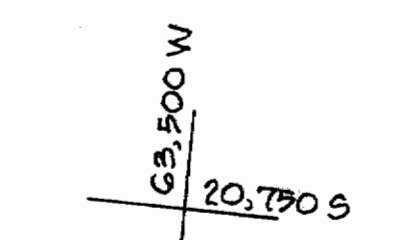
VICINITY MAP
Scale: 1" = 1/2 mile

AS BUILT
STAKEOUT & DIARY IN FB. #4270



Match Line "A-A" See This Drawing

Match Line "B-B" See Drawing No. 2



Kenneth A. McCord
Contract No. 223-W&S

WR #A B.M. #59-A
R.R. Spike in base of G&E pole #138699
on the North side of Route #29 1000' ±
West of Old Annapolis Road

No.	Date	Revision
10-21-68		Added 24" Casing Pipe on Water Main

WHITMAN, REQUARDT & ASSOCIATES ENGINEERS 1304 ST. PAUL ST. BALTIMORE, MARYLAND	HOWARD COUNTY METROPOLITAN COMMISSION DATE: 6-11-68 CHIEF ENGINEER: W. O. Fallick	CONTRACT NO. 223W&S	PLAN OF WATER AND SEWER MAINS	ELECTION DISTRICT ELLCOTT CITY NO. 2	DRAWING NO. 1	SCALE 1" = 50'
					OF 4	

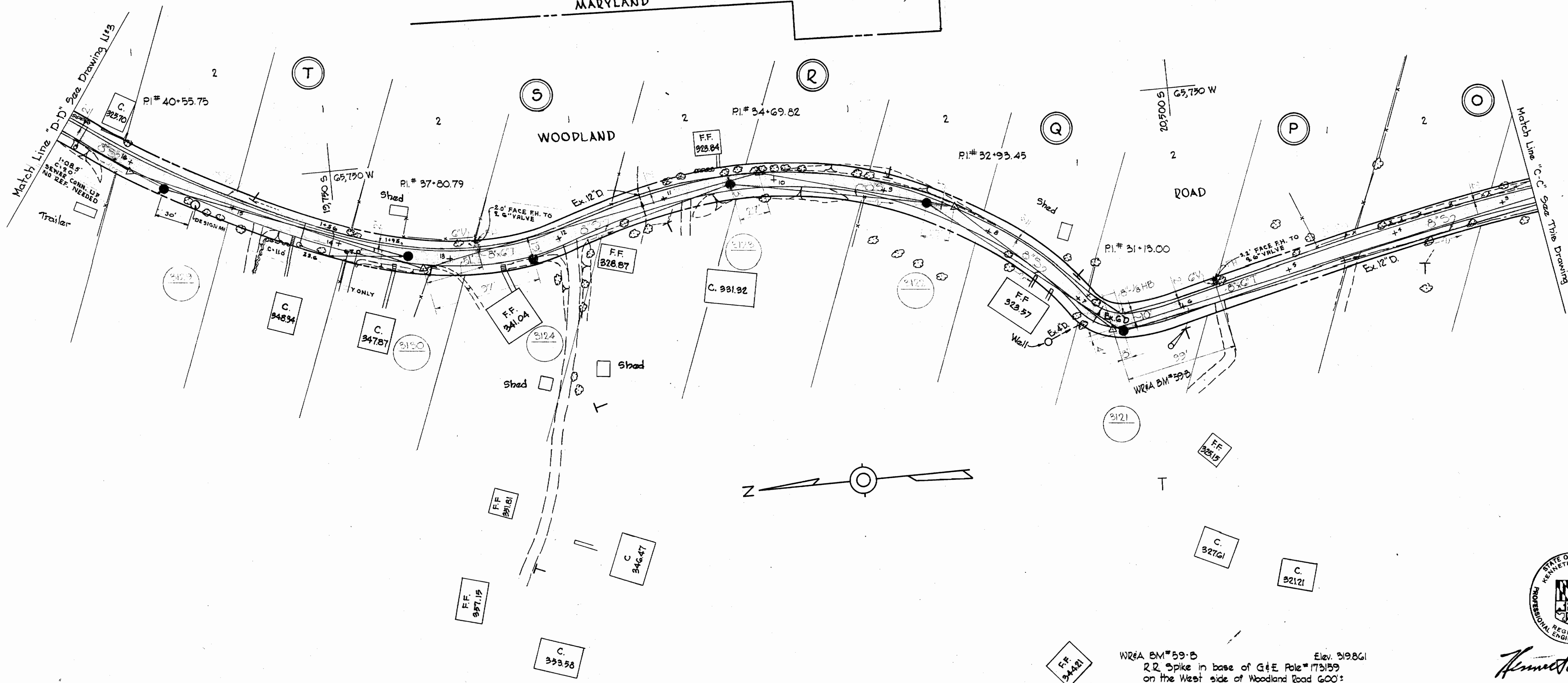
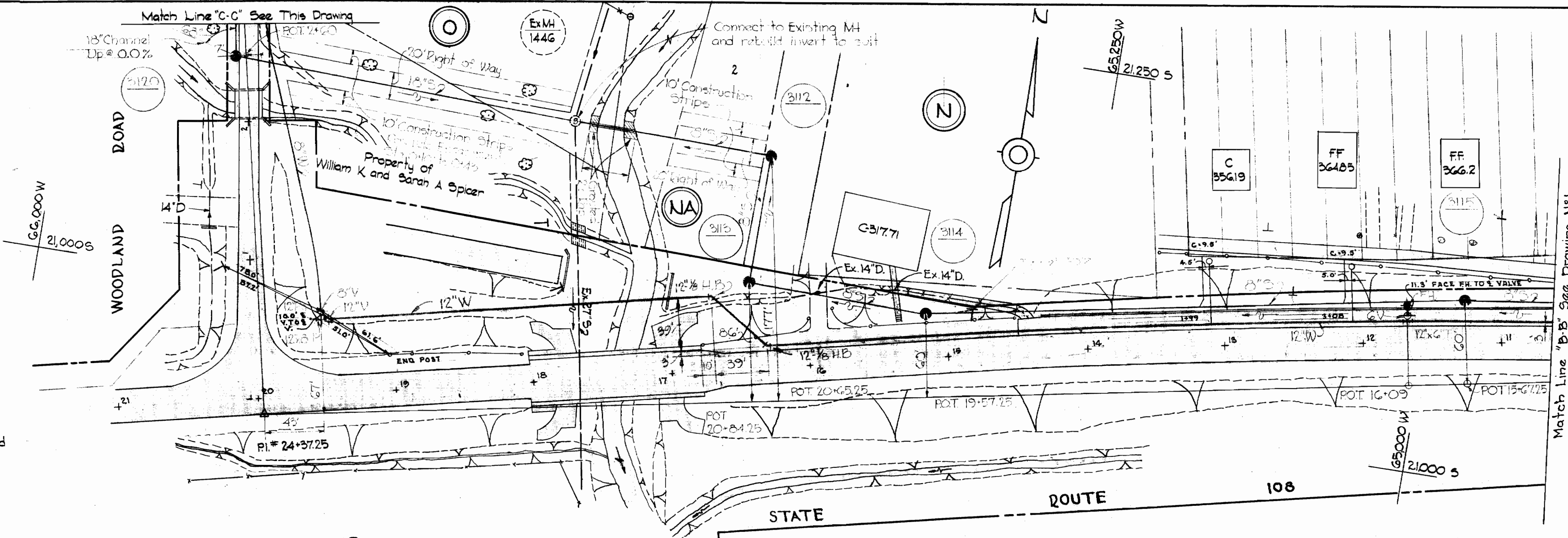
W. O. G021-2

AS BUILT FEBRUARY 19, 1969
FB #2169
FB #2165

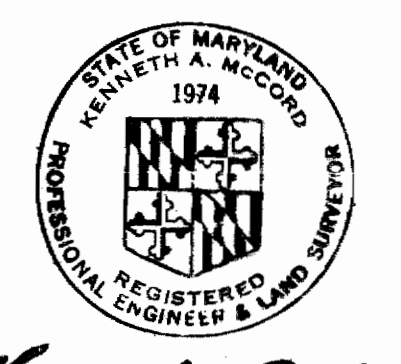
WS 223-WS/1

GENERAL NOTES

1. Approximate location of existing mains are shown. The Contractor shall take all necessary precautions to protect existing mains and services and maintain uninterrupted supply. Any damage incurred shall be repaired immediately.
2. All pipe elevations shown are invert elevations.
3. The Contractor shall locate existing utilities a minimum of two weeks in advance of construction operations in vicinity of utilities.
4. For all standard details see standards bound in Specifications.
5. All water mains to be CIP or DIP and have a minimum of 3 1/2' cover.
6. Block all fittings with concrete, see standard details bound in Specifications.
7. Bury line elevations on fire hydrants shall be set the same as edge of paving, top of curb, or as directed by the Engineer in the field.
8. All Fire Hydrants shall be strapped to the tee and buttressed with concrete in accordance with Standard Detail.
9. The Contractor shall provide a joint in all sewer mains within 2'-0" of exterior manhole walls.
10. All Manholes shall be 4'-0" inside diameter.
11. All Sewer Pipe shall be CSPX, VCPX, or ACP Class 2400 unless otherwise noted.



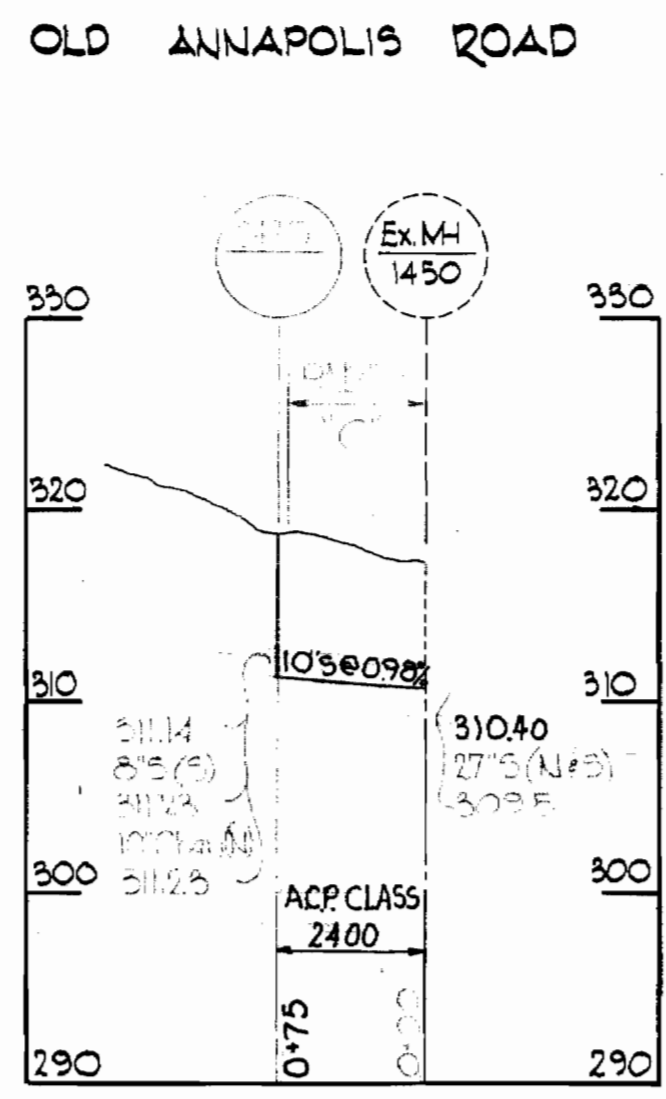
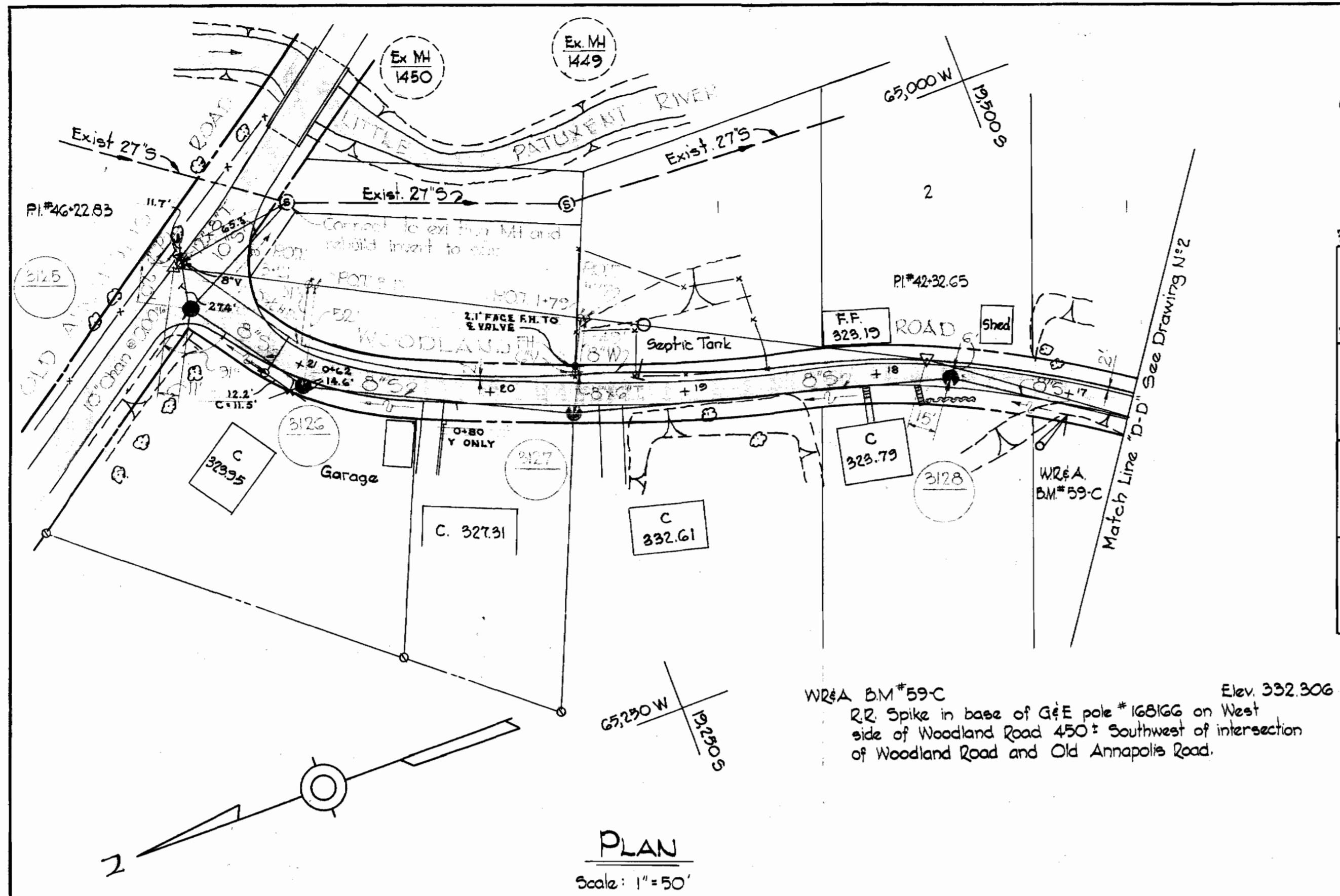
WQA BM#59-B Elev. 319.861
 R.R. Spike in base of G&E Pole#173159
 on the West side of Woodland Road 600'
 West of US Route #29



Kenneth A. McCord
 Contract No. 223 W#5

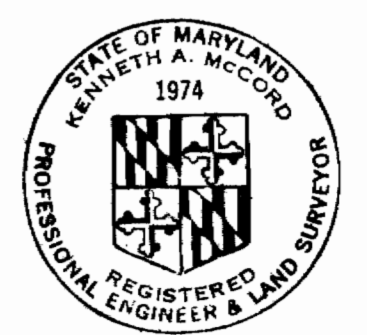
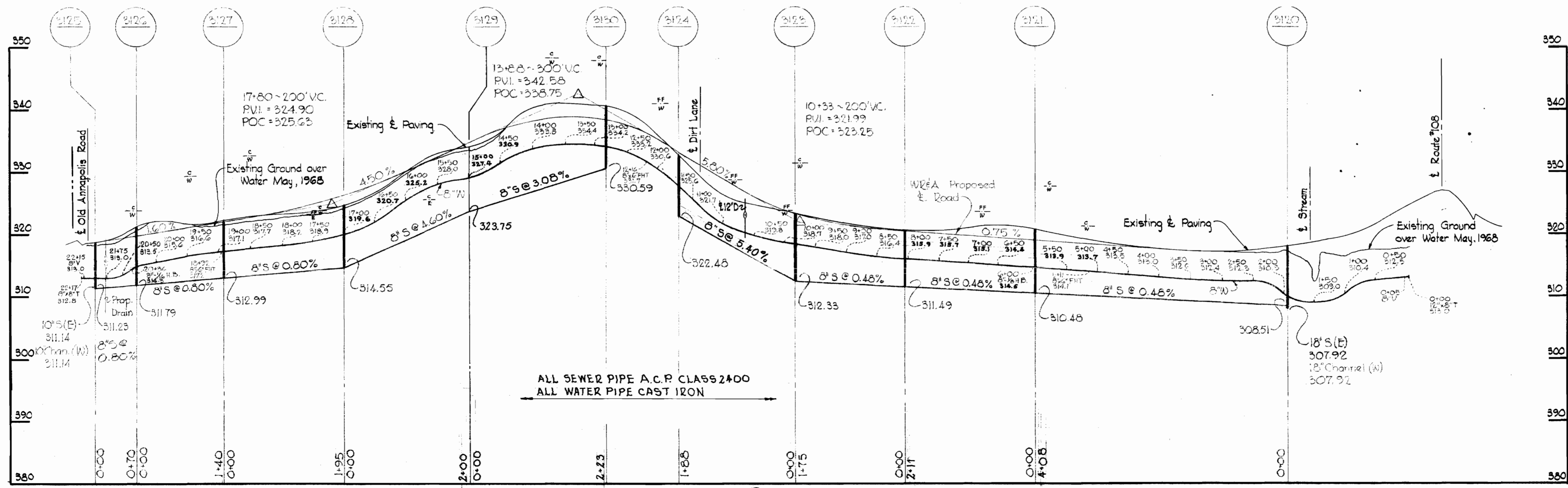
WHITMAN, REQUARDT & ASSOCIATES ENGINEERS 1304 ST. PAUL ST. BALTIMORE, MARYLAND	HOWARD COUNTY METROPOLITAN COMMISSION DATE: 6-11-68 Chief Engineer: <i>W. O. Palmer</i>	CONTRACT NO. 223W#5	PLAN OF WATER AND SEWER MAINS	ELECTION DISTRICT ELLICOTT CITY NO. 2	DRAWING NO. 2 OF 4 SCALE 1"=50' FEBRUARY 20, 1969
---	---	---------------------	-------------------------------	--	---

223-W5/2



WREA B.M.#59-C Elev. 332.306
 RR Spike in base of G&E pole #168166 on West side of Woodland Road 450' Southwest of intersection of Woodland Road and Old Annapolis Road.

WOODLAND ROAD



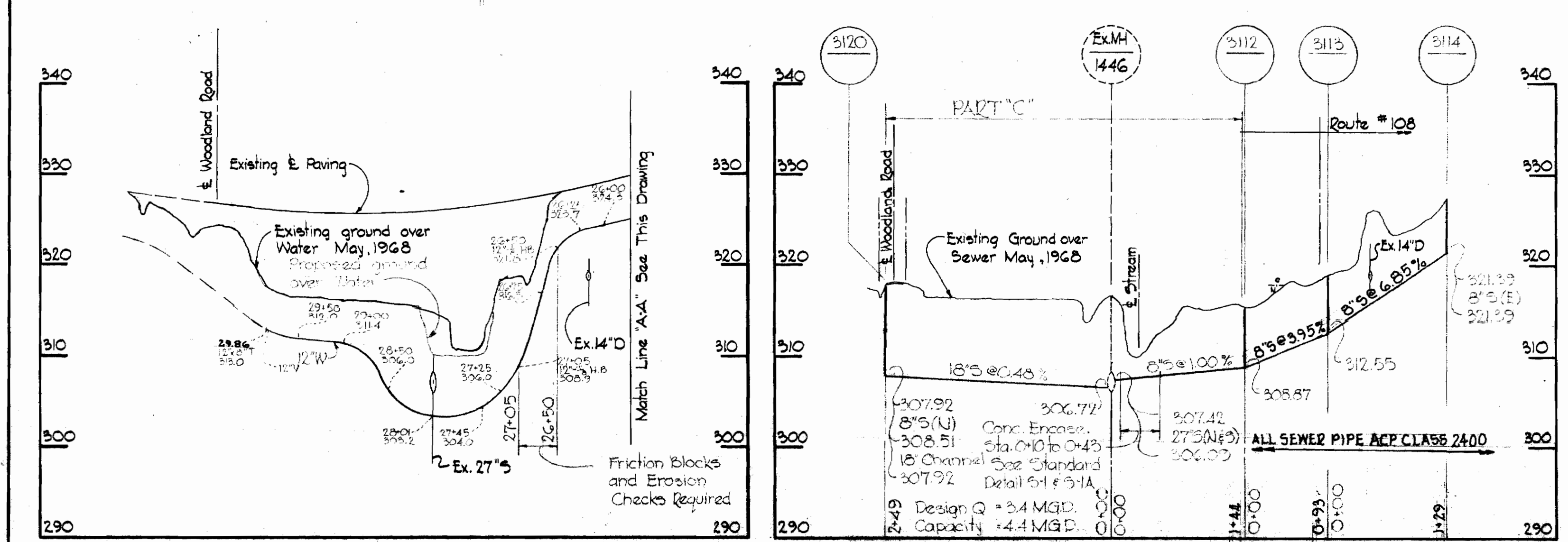
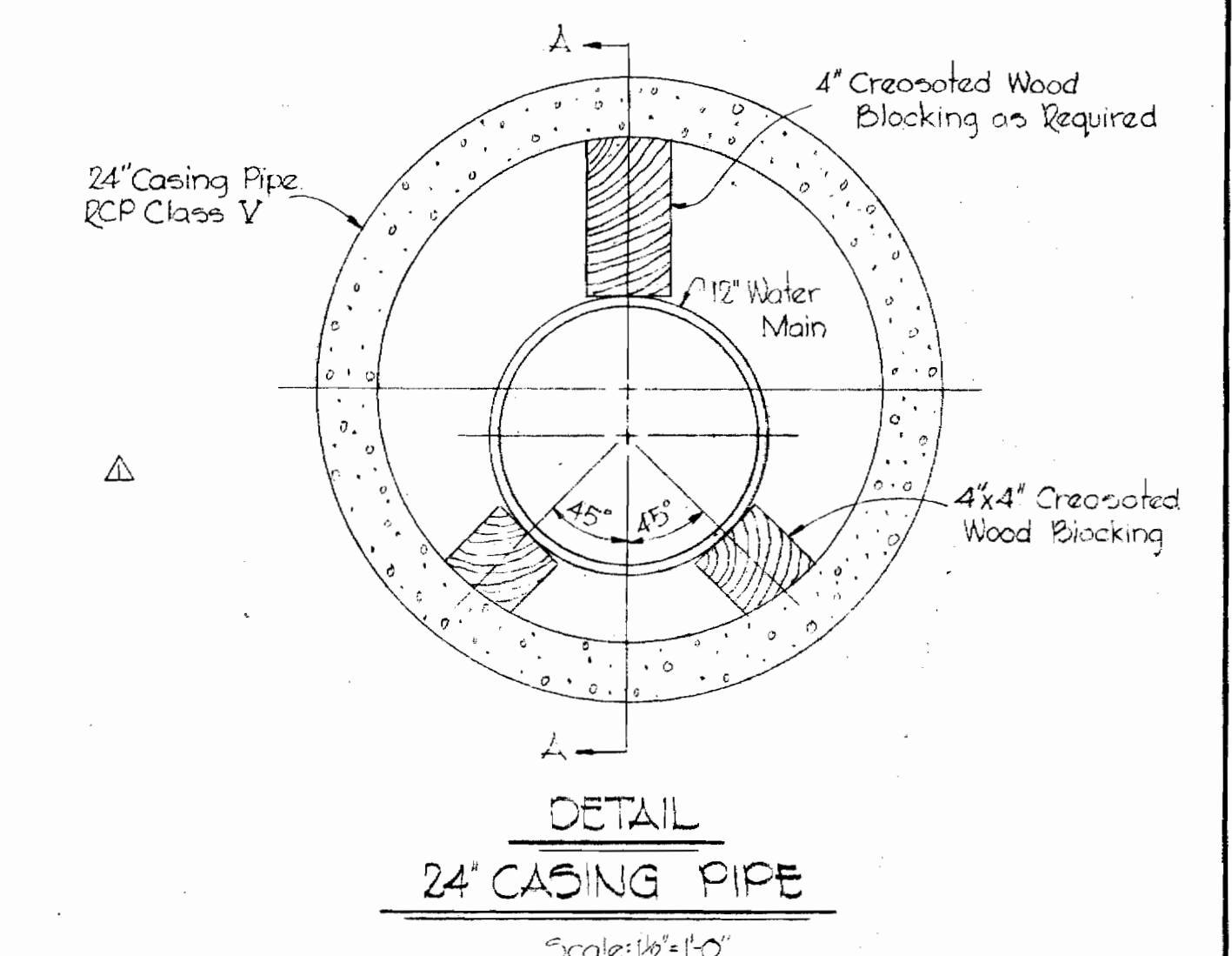
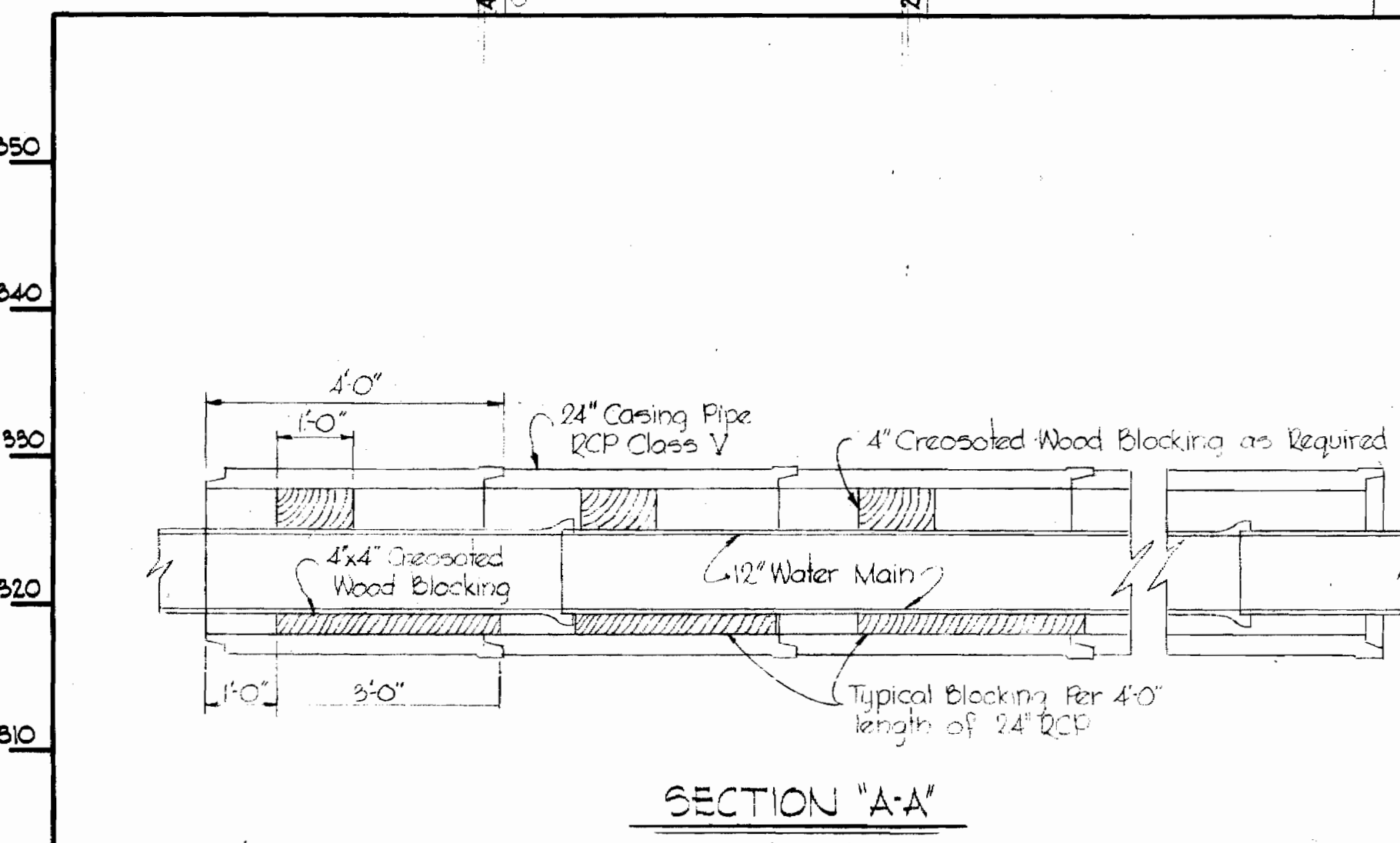
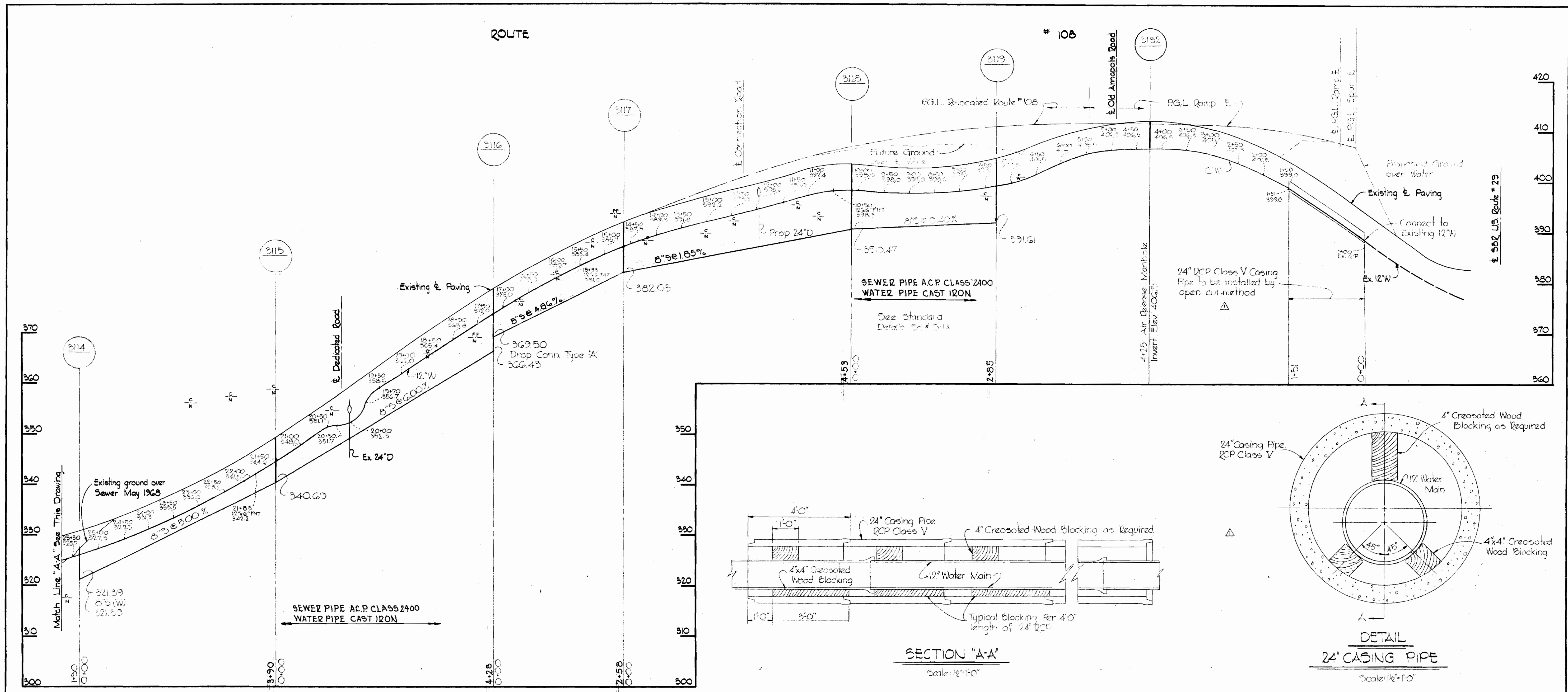
Kenneth A. McCord

Contract NJR 223-W#5

223-WS/3

WHITMAN, REQUARDT & ASSOCIATES ENGINEERS 1304 ST. PAUL ST.	HOWARD COUNTY METROPOLITAN COMMISSION DATE: 6-11-68 W. O. Faller CHIEF ENGINEER	CONTRACT NO. 223-W#5	PLAN AND PROFILE OF WATER AND SEWER MAINS	ELECTION DISTRICT ELLICOTT CITY NO. 2	DRAWING NO. 3 OF 4 SCALE AS SHOWN
---	---	-----------------------------	--	--	--

WS 223-WS/4



<p>WHITMAN, REQUARDT & ASSOCIATES ENGINEERS 1304 ST. PAUL ST. BALTIMORE, MARYLAND</p>	<p>HOWARD COUNTY METROPOLITAN COMMISSION 6-11-68 DATE</p> <p><i>W. O. Fallick</i> CHIEF ENGINEER</p>	<p>CONTRACT NO. 223-WS</p>	<p>PROFILES OF WATER AND SEWER MAINS</p>	<p>ELECTION DISTRICT ELLCOTT CITY NO. 2</p>	<p>DRAWING NO. 4 OF 4 SCALE H: 1"=100' V: 1"=10'</p>
---	--	----------------------------	--	---	--

10-21-68 Added 24" RCP Casing Pipe and added Blocking Detail
11-0-68 Revision

STATE OF MARYLAND
KENNETH A. MCCOY
1974
REGISTERED PROFESSIONAL ENGINEER & LAND SURVEYOR

Kenneth A. McCoy

Contract No. 223 WS