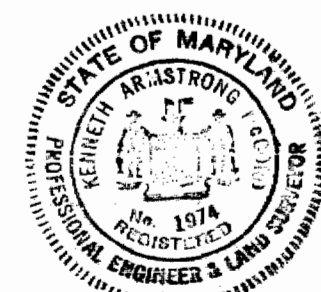


CONTRACT 215 - W  
 WHISKEY BOTTOM ROAD  
 WATER PUMPING STATION  
 HOWARD COUNTY METROPOLITAN COMMISSION  
 ELLICOTT CITY, MARYLAND



*Kenneth A. Arnold*

WHITMAN, REQUARDT & ASSOCIATES  
 ENGINEERS  
 1304 ST. PAUL ST.  
 BALTIMORE, MARYLAND

HOWARD COUNTY METROPOLITAN COMMISSION  
 11-8-67  
 DATE  
*W. O. Falout*  
 CHIEF ENGINEER

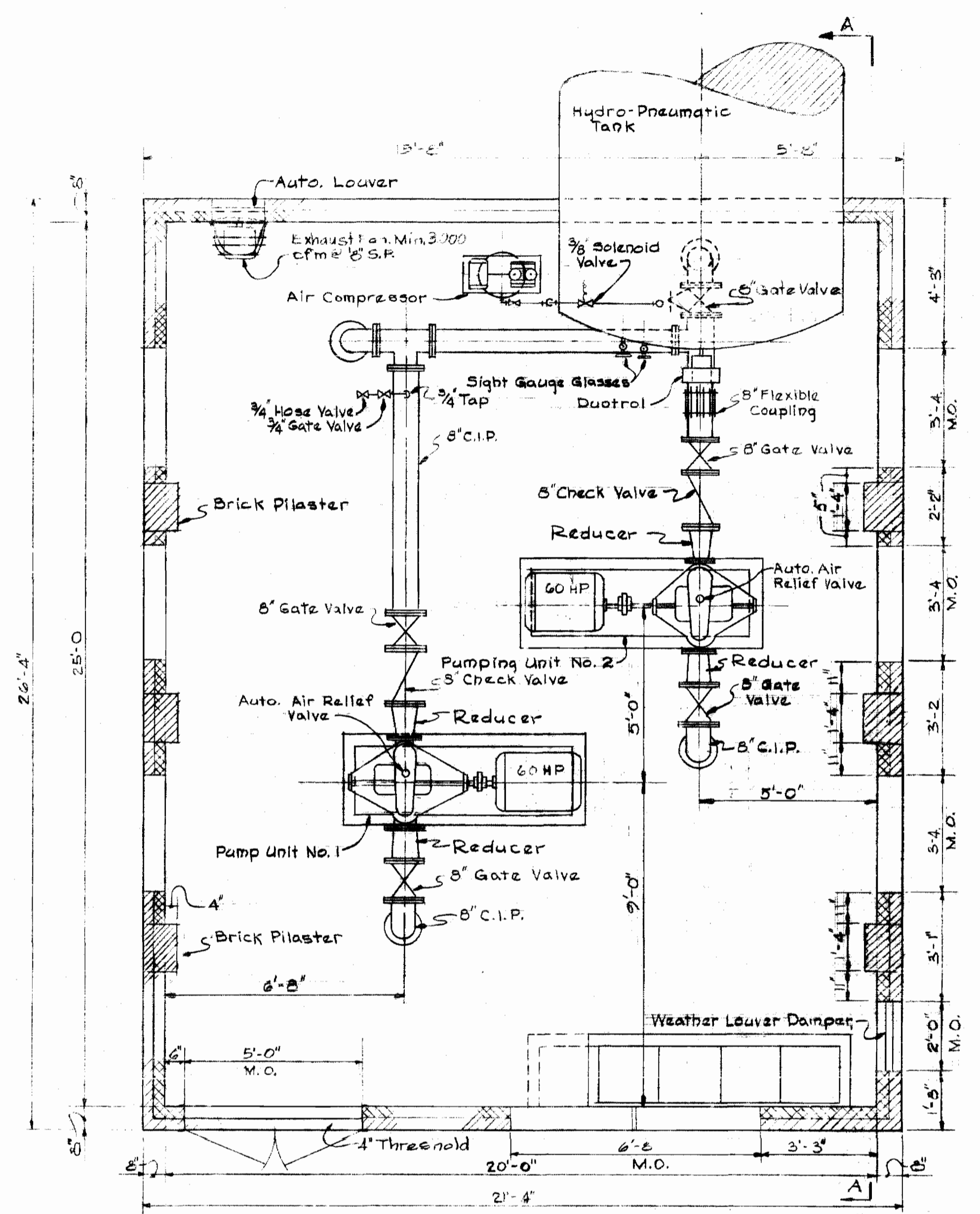
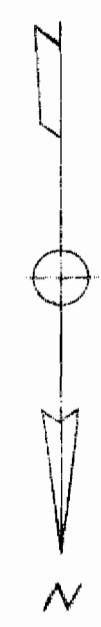
CONTRACT NO. 215-W

LOCATION MAP, SITE PLAN  
 AND DETAILS

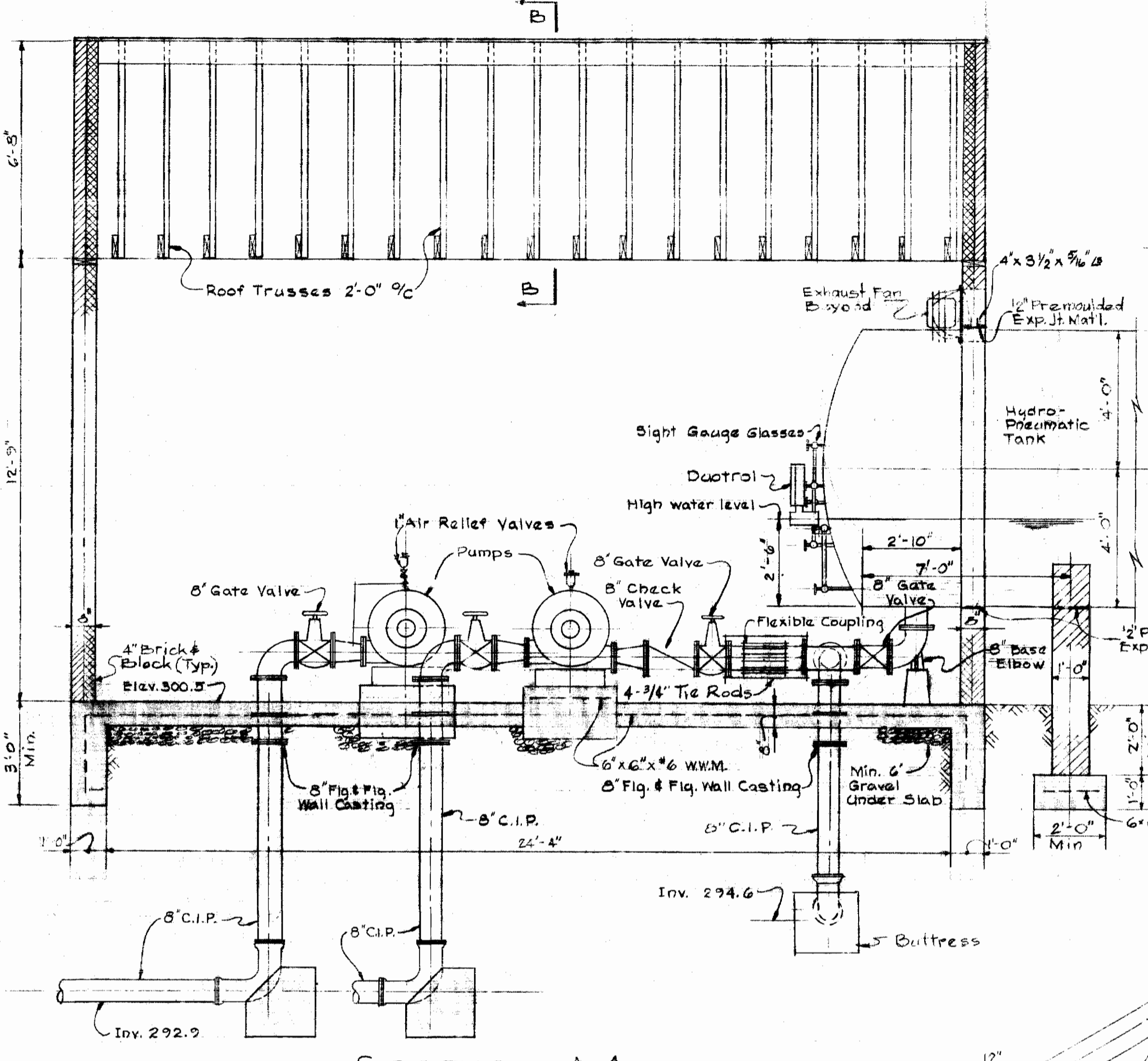
ELECTION DISTRICT  
 GUILFORD NO. 6

DRAWING  
 NO. 1  
 OF 3

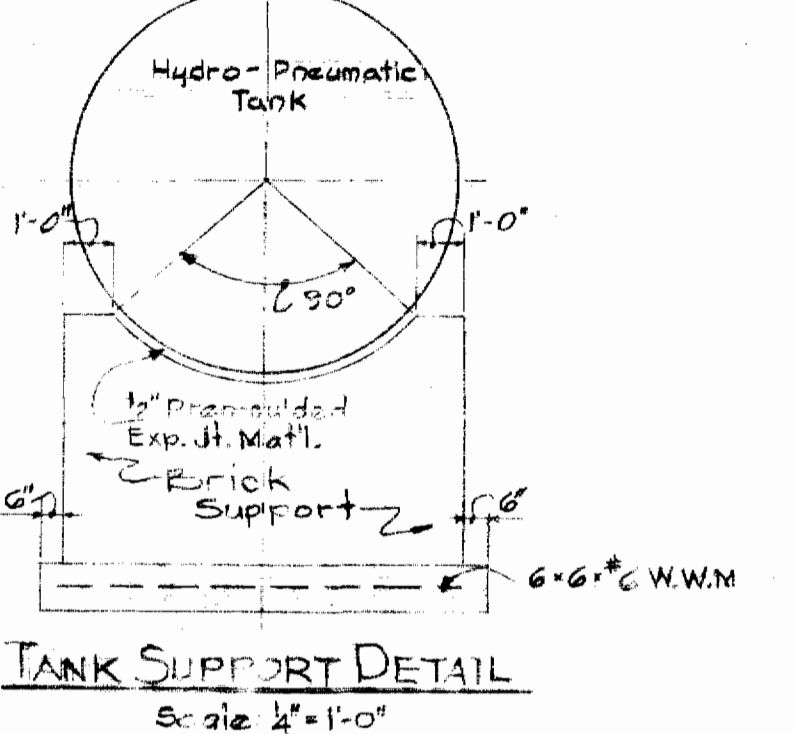
NS 215-W/1



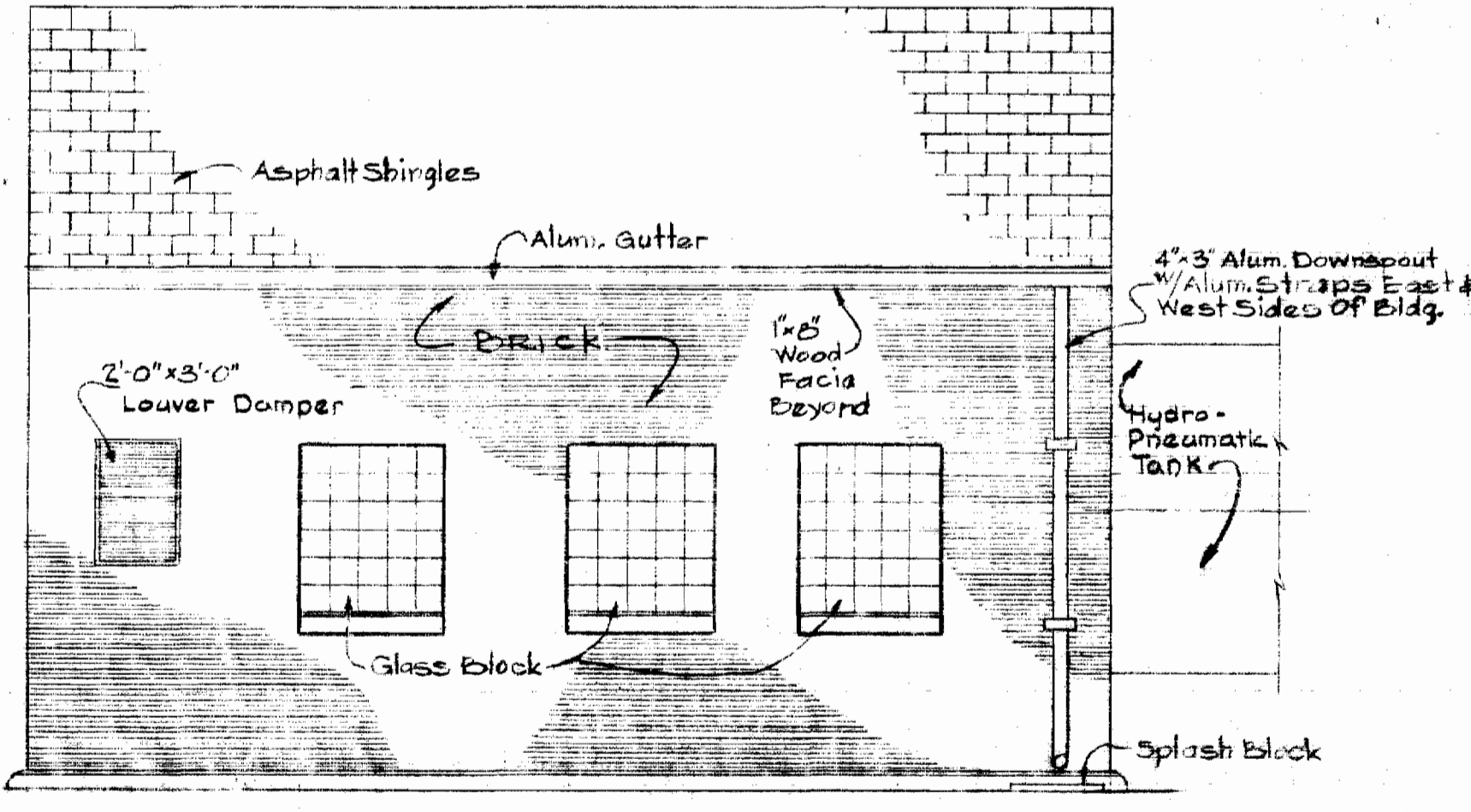
PLAN AT PUMP ROOM  
Scale: 3/8"=1'-0"



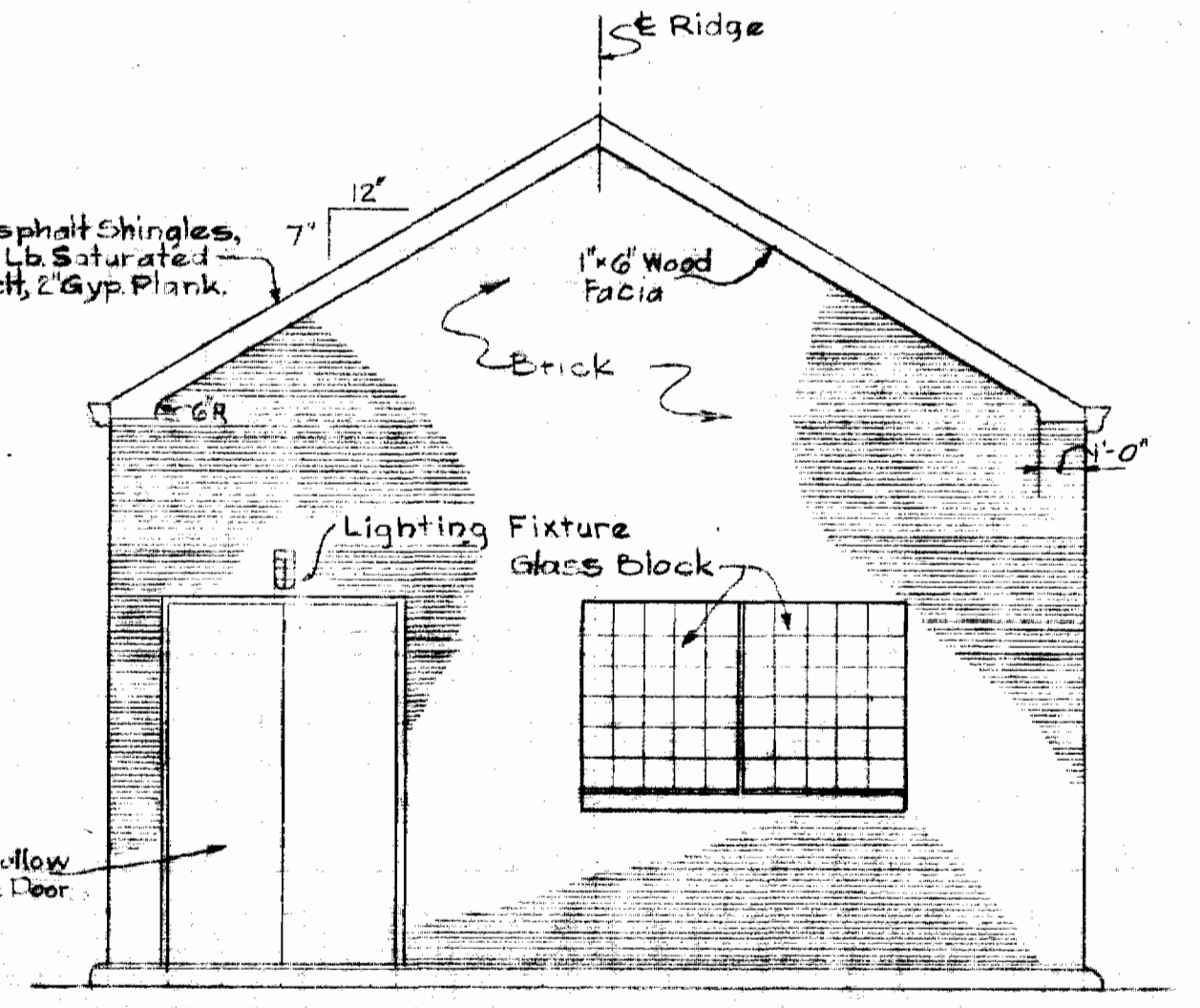
SECTION A-A  
Scale: 3/8"=1'-0"



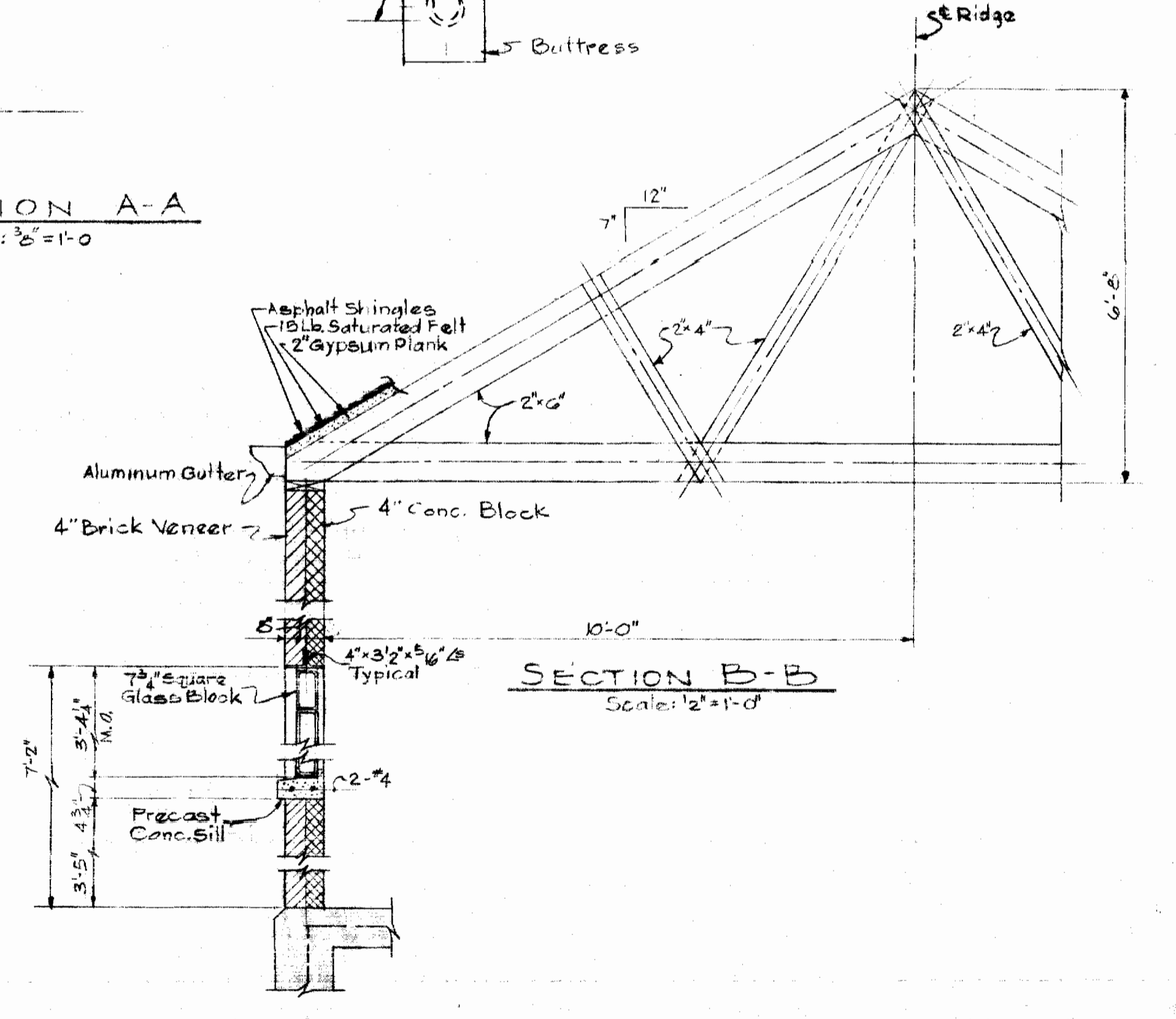
TANK SUPPORT DETAIL  
Scale: 1/2"=1'-0"



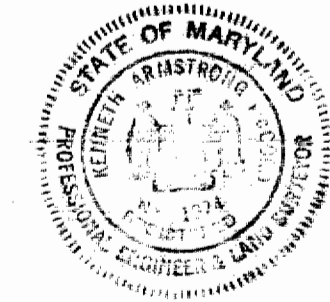
WEST ELEVATION  
Scale: 1/4"=1'-0"



NORTH ELEVATION  
Scale: 1/4"=1'-0"



TYPICAL WALL SECTION  
Scale: 1/2"=1'-0"



*Herbert A. Alford*

WHITMAN, REQUARDT & ASSOCIATES  
ENGINEERS  
1304 ST. PAUL ST.  
BALTIMORE, MARYLAND

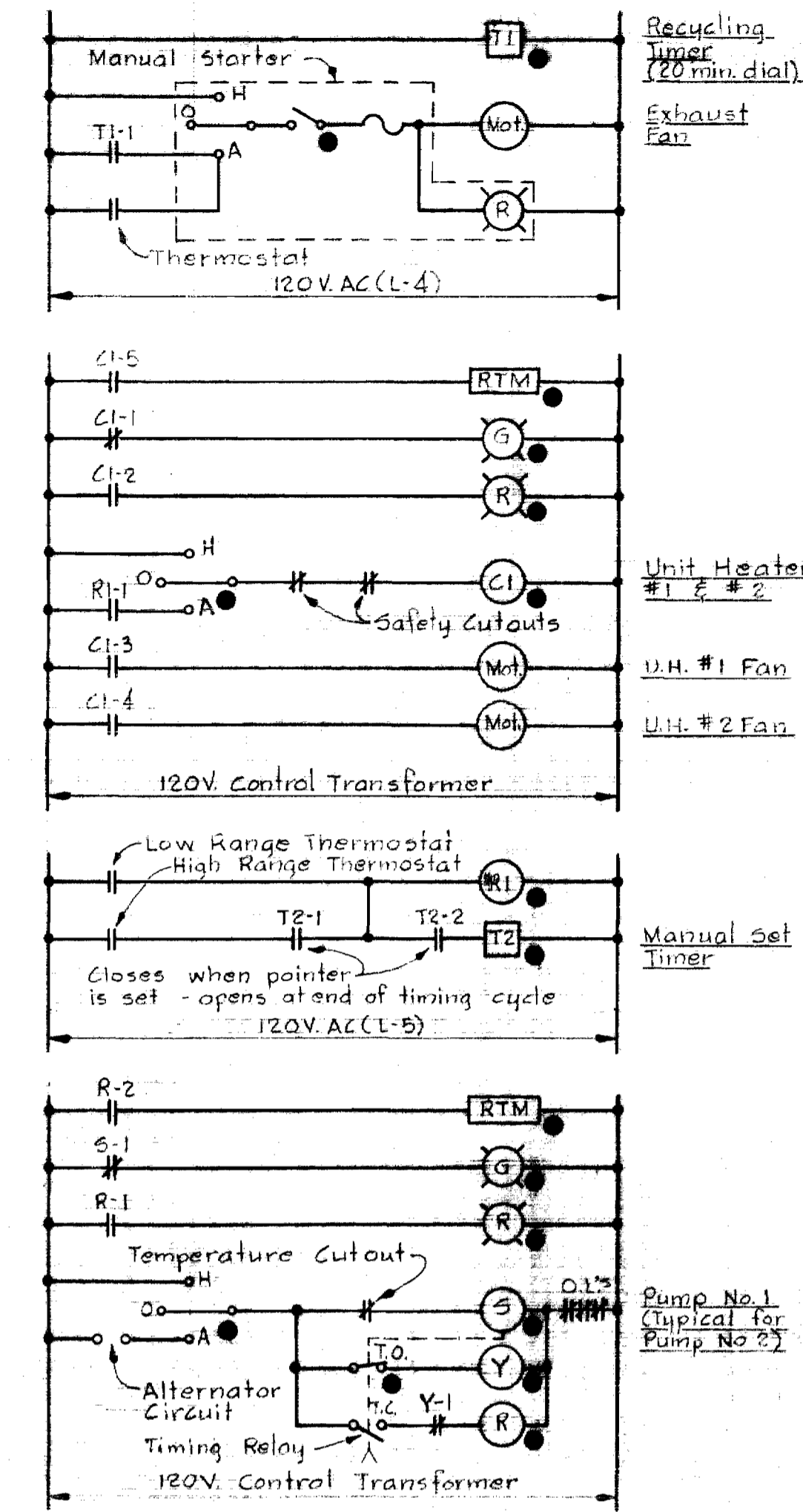
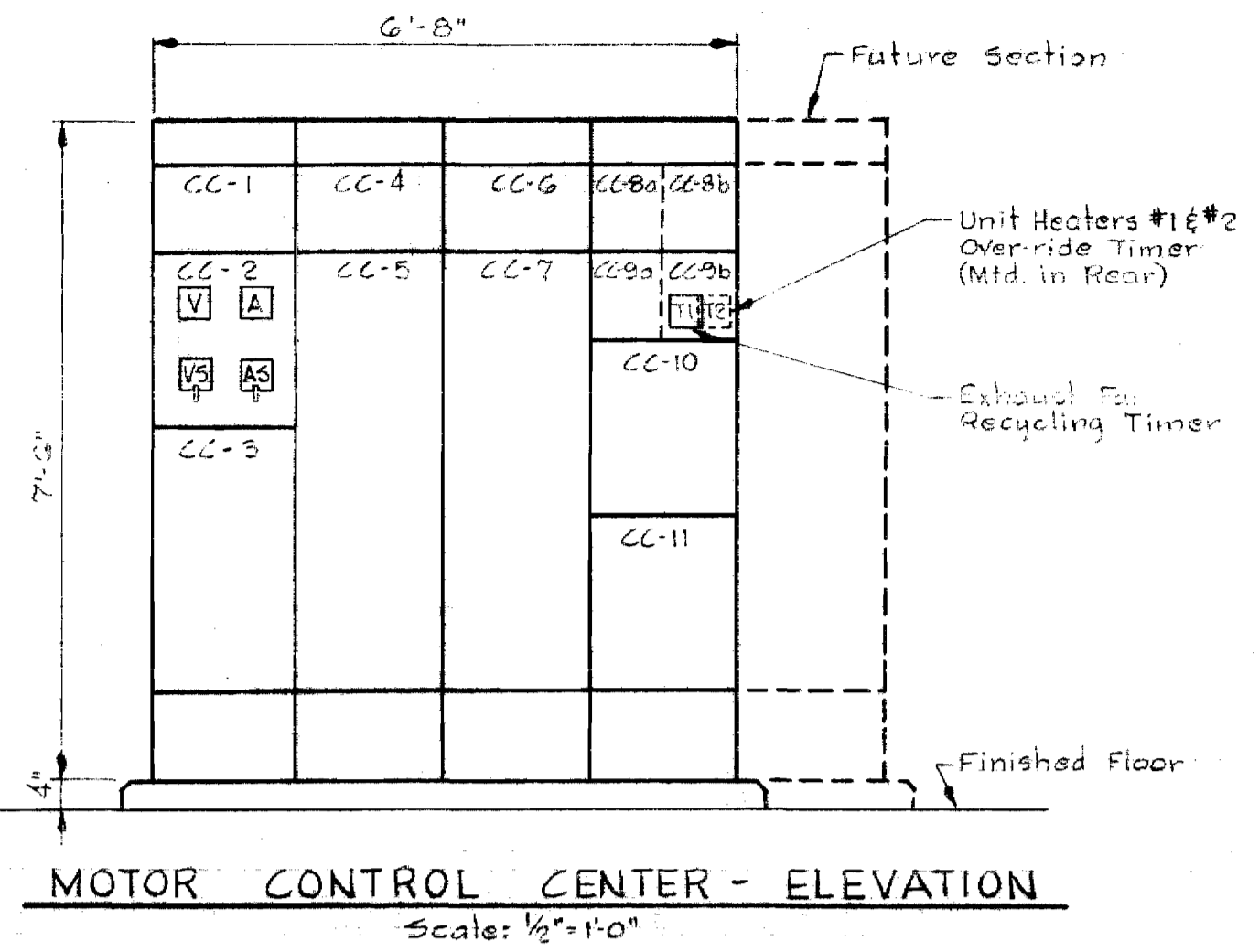
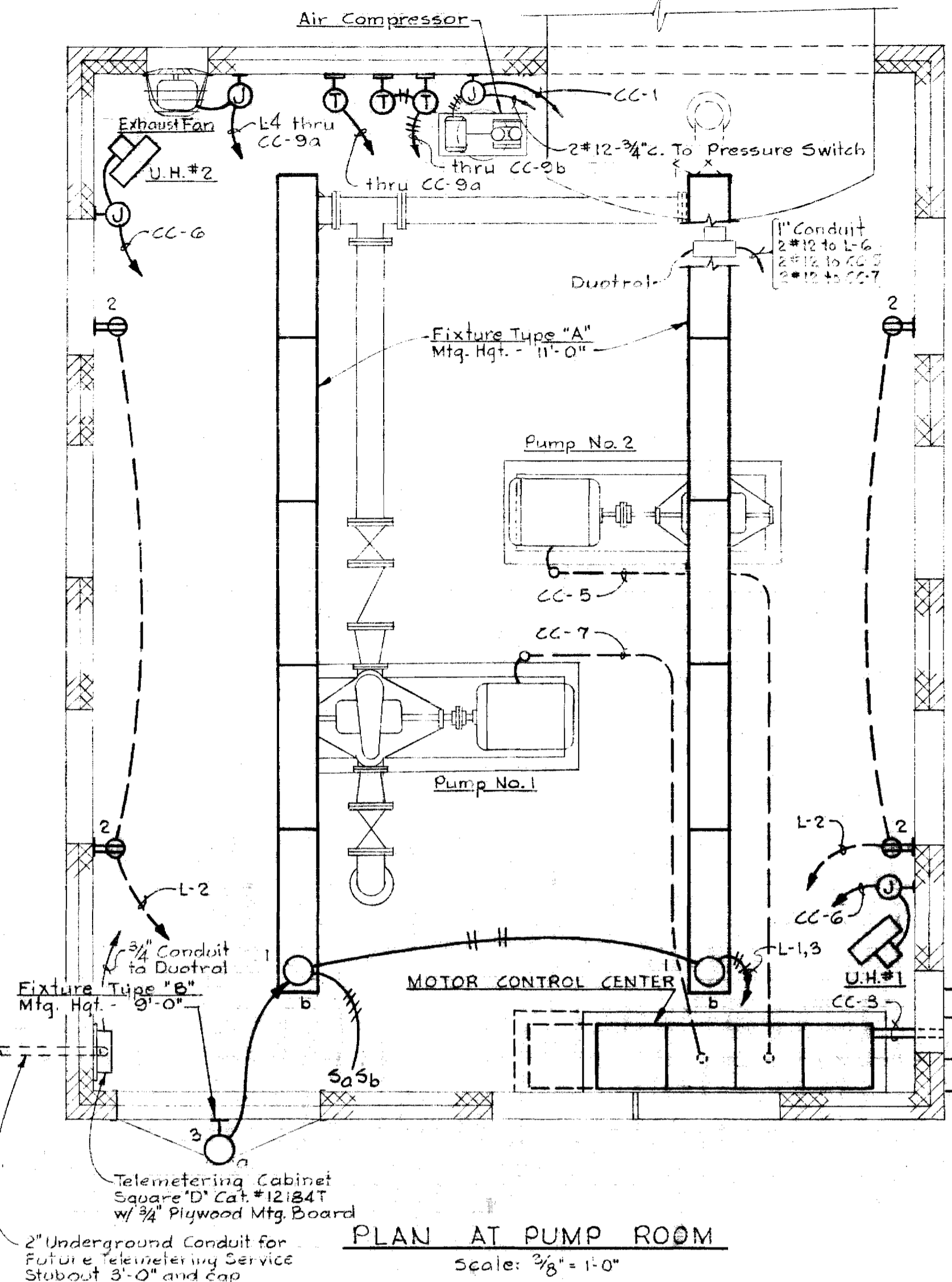
HOWARD COUNTY METROPOLITAN COMMISSION  
11-8-67 DATE  
*W. O. Lillie* CHIEF ENGINEER

CONTRACT NO. 215-W

ARCHITECTURAL AND MECHANICAL DETAILS

ELECTION DISTRICT GUILFORD NO. 6

DRAWING NO. 2 OF 3 SCALE AS SHOWN



### ELECTRICAL LEGEND

- Outlet - Incandescent
- Outlet - Fluorescent
- Junction Box
- Outlet - Duplex Convenience
- Switch - Single Pole
- Thermostat-mounted on wood block
- Unit Heater
- Conduit - in slab
- Conduit - stubbed up
- Conduit - in or on ceiling or wall
- Home-run to Control Center - No. of arrows indicate No. of circuits - No. of cross lines indicates No. of wires - Where no cross lines appear, 2 conductors are implied - see MOTOR CONTROL CENTER SCHEDULE.
- Air Circuit Breaker - manually operated - drawout
- Magnetic Motor Starter - Full Voltage
- Contactor
- Override Timer
- Current Transformer
- Power Transformer
- Ground
- Fuse
- Incoming Line
- Voltmeter
- Voltmeter Switch
- Ammeter
- Ammeter Switch
- Manual Motor Starter
- Motor with horsepower rating
- Switch - Hand/Off/Auto-selector
- Disconnecting switch
- Contactor - normal open-normal close
- Buried Cable - Power - 600V or less
- Magnetic Motor Starter - Reduced Voltage

- ### NOTES
- For lighting fixture types, see specifications.
  - For panelboard schedule, see specifications.
  - For outside electrical work, see SITE PLAN, Drawing # 1.

### MOTOR CONTROL CENTER SCHEDULE

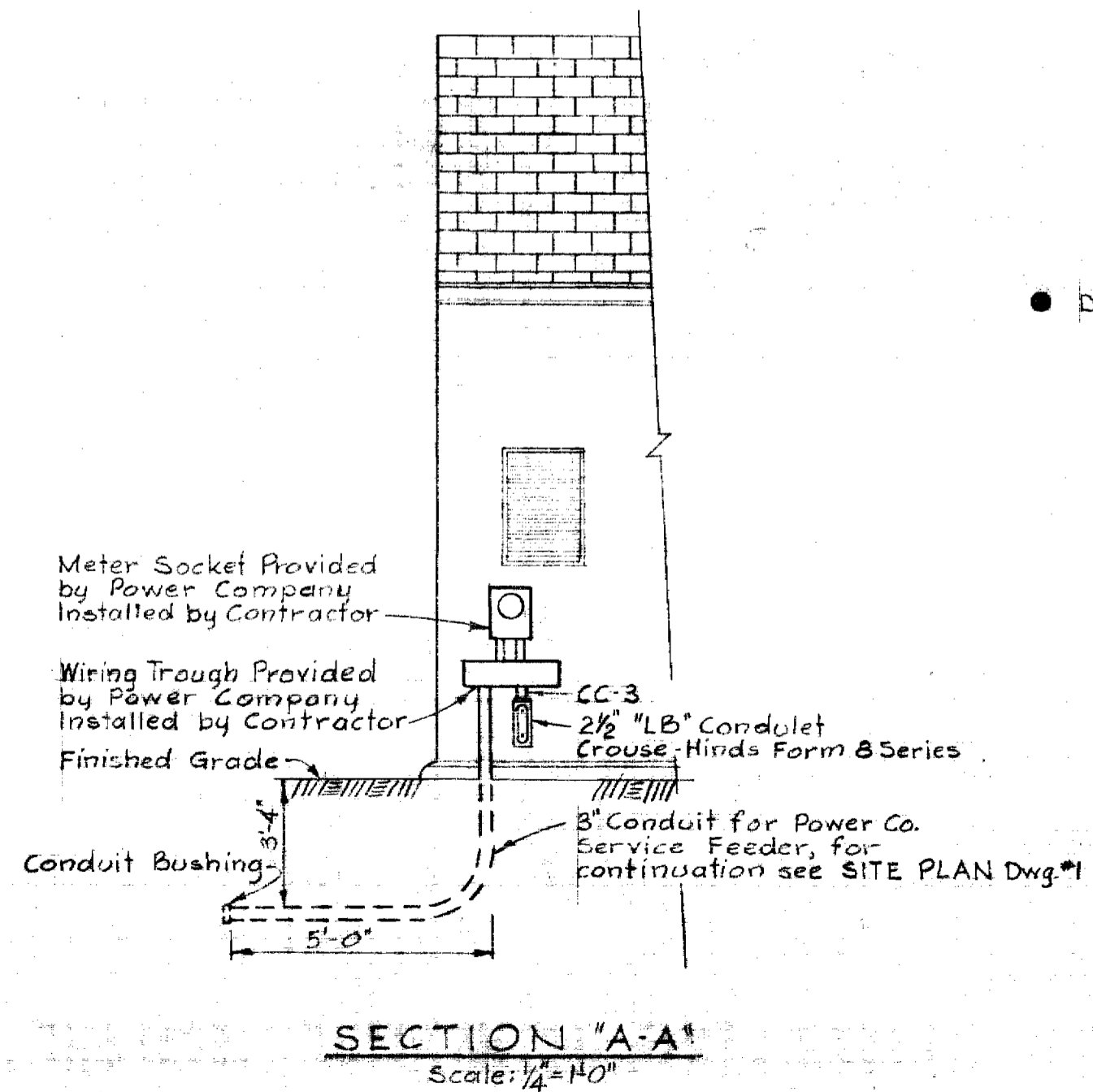
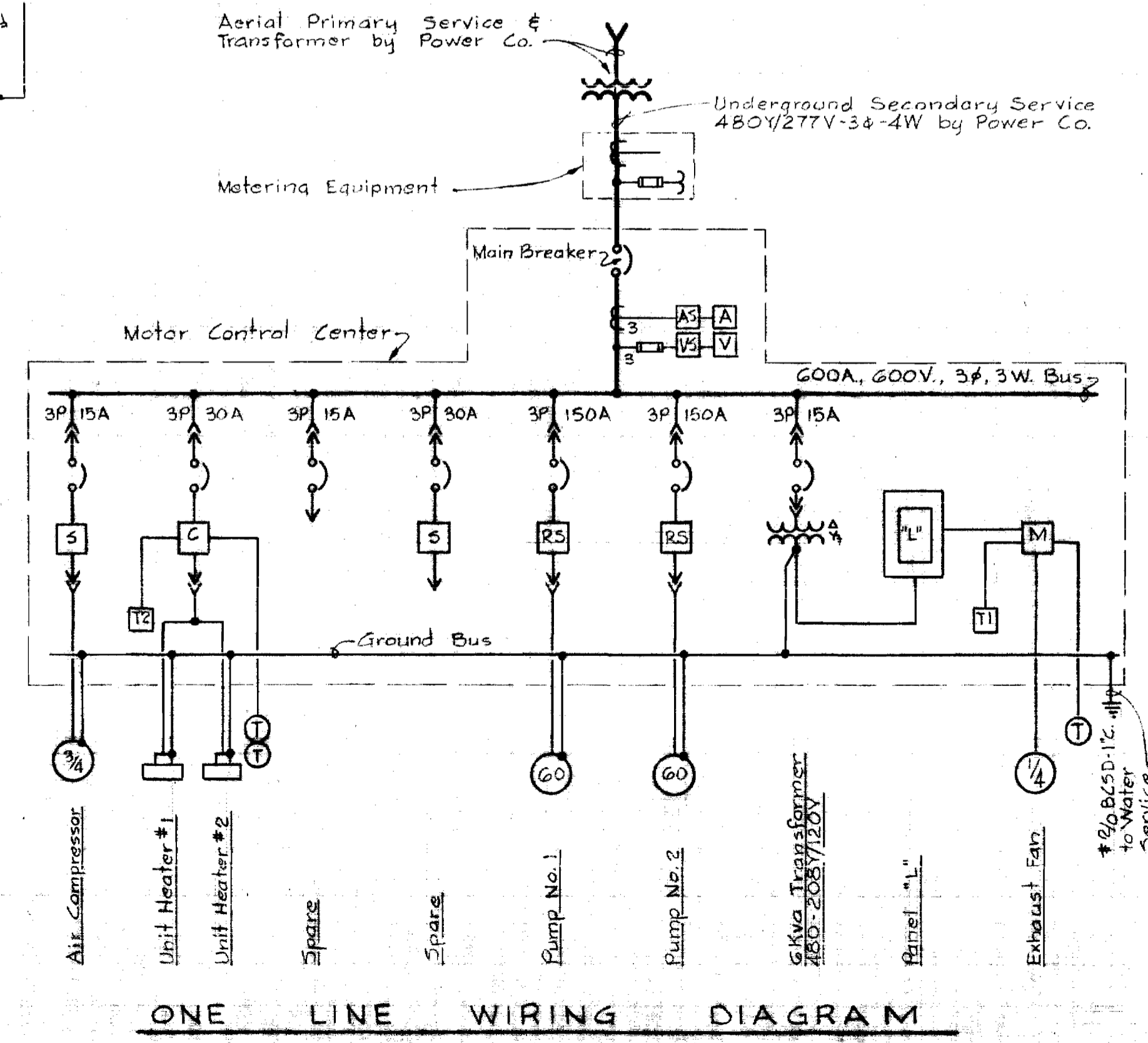
Unit # Run No.	Name Plate Data	Device Description	HP or KW	Aux. Description	Breaker Frame Pole	A.I.C. #	Wire No. Size Type	For	Grnd Wire	Cont Duit
CC-2	Ammeter, Voltmeter	Ammeter & Switch Voltmeter & Switch								
CC-3	Main Breaker	Circuit Breaker			400 3	300 3	3 4/0 USE RR	Power	2	2 1/2"
CC-1	Air Compressor	Combination Starter Size 1, FVNR	3/4	a, b, c, d, f	100 3	15 4	3 12 THW	Power Control	12	1"
CC-4	Blank (spare)	Combination Starter Size 1, FVNR		a, b, c, d	100 3	30 4				
CC-5	Pump No. 2	Combination Starter Size 4, RVNR	60	a, b, c, d, f	225 3	150 6	3 2 THW	Power	8	2"
CC-6	Unit Heaters #1 & #2	Combination Contactor Size 2, FVNR	2 (1/2)	a, b, d	100 3	30 4	3 12 THW	Power Control	12	1"
CC-7	Pump No. 1	Combination Starter Size 4, RVNR	60	a, b, c, d, f	225 3	150 6	3 2 THW	Power	8	2"
CC-8a	Blank (spare)	Circuit Breaker			100 3	15 4				
CC-8b	6 Kva Transformer	Circuit Breaker			100 3	15 4		By Equipment manufacturer		
CC-9a	Exhaust Fan	Manual Starter Timers T1 & T2					2 12 THW	Power	1/2"	
CC-9b	(see ELEVATION)							By Equipment manufacturer		
CC-10	Lighting Panel	Panel "L" - 12-1P Breakers 208Y/120V 3#4W						See SPECIFICATION	See DRAWINGS	
CC-11		6 Kva Transformer 480-208Y/120V 3#						By Equipment manufacturer		

### \* A.I.C. LEGEND

4 - 15,000 @	480 Volts
5 - 20,000 @	480 Volts
6 - 25,000 @	480 Volts
7 - 30,000 @	480 Volts
8 - 35,000 @	480 Volts

### † AUXILIARY DESCRIPTION

a - Red & Green Indicating Lights
b - Hand-Off-Automatic Switch
c - Third Overload Relay
d - 480-120 Control Transformer
f - Running Time Meter



<b>WHITMAN, REQUARDT &amp; ASSOCIATES</b> ENGINEERS 1304 ST. PAUL ST. BALTIMORE, MARYLAND	<b>HOWARD COUNTY METROPOLITAN COMMISSION</b> 11-8-67 DATE  CHIEF ENGINEER	CONTRACT NO. 215-W <b>ELECTRICAL DETAILS</b>	<b>ELECTION DISTRICT</b> <b>GUILFORD NO. 6</b> <b>DRAWING</b> NO. 3 OF 3 <b>SCALE</b>
--	---	---	--

W.O. 5562

AS BUILT JAN. 16, 1970

WS 215-W/3

