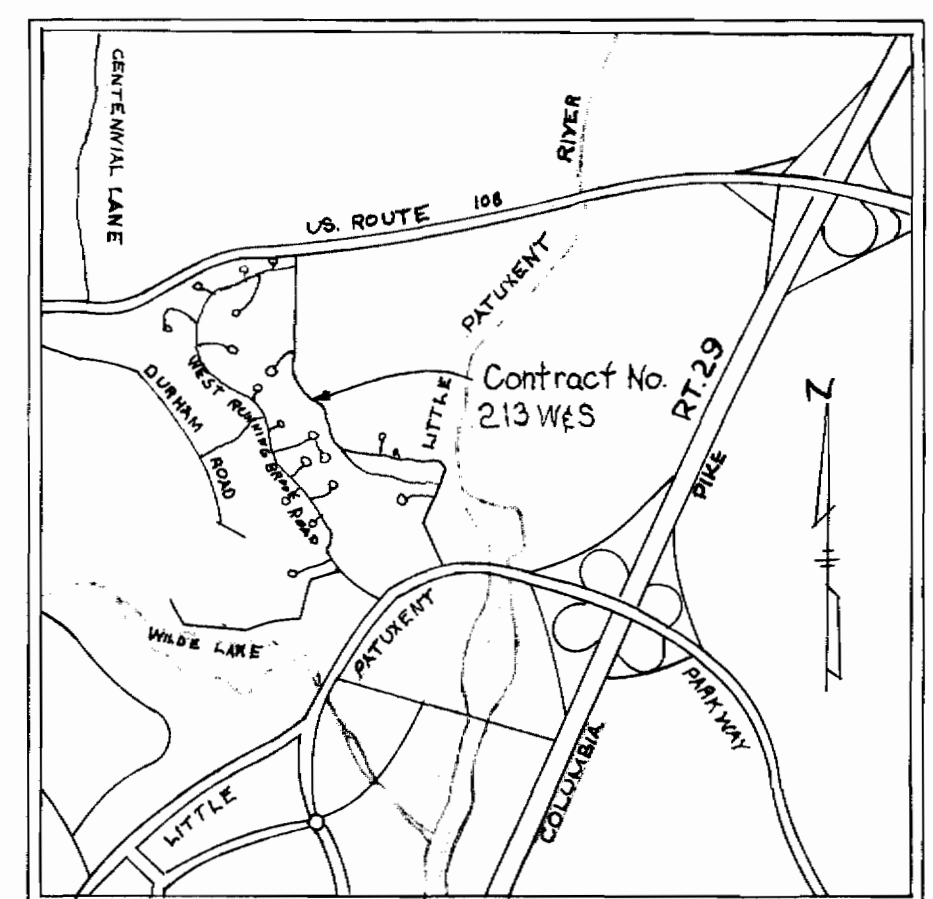
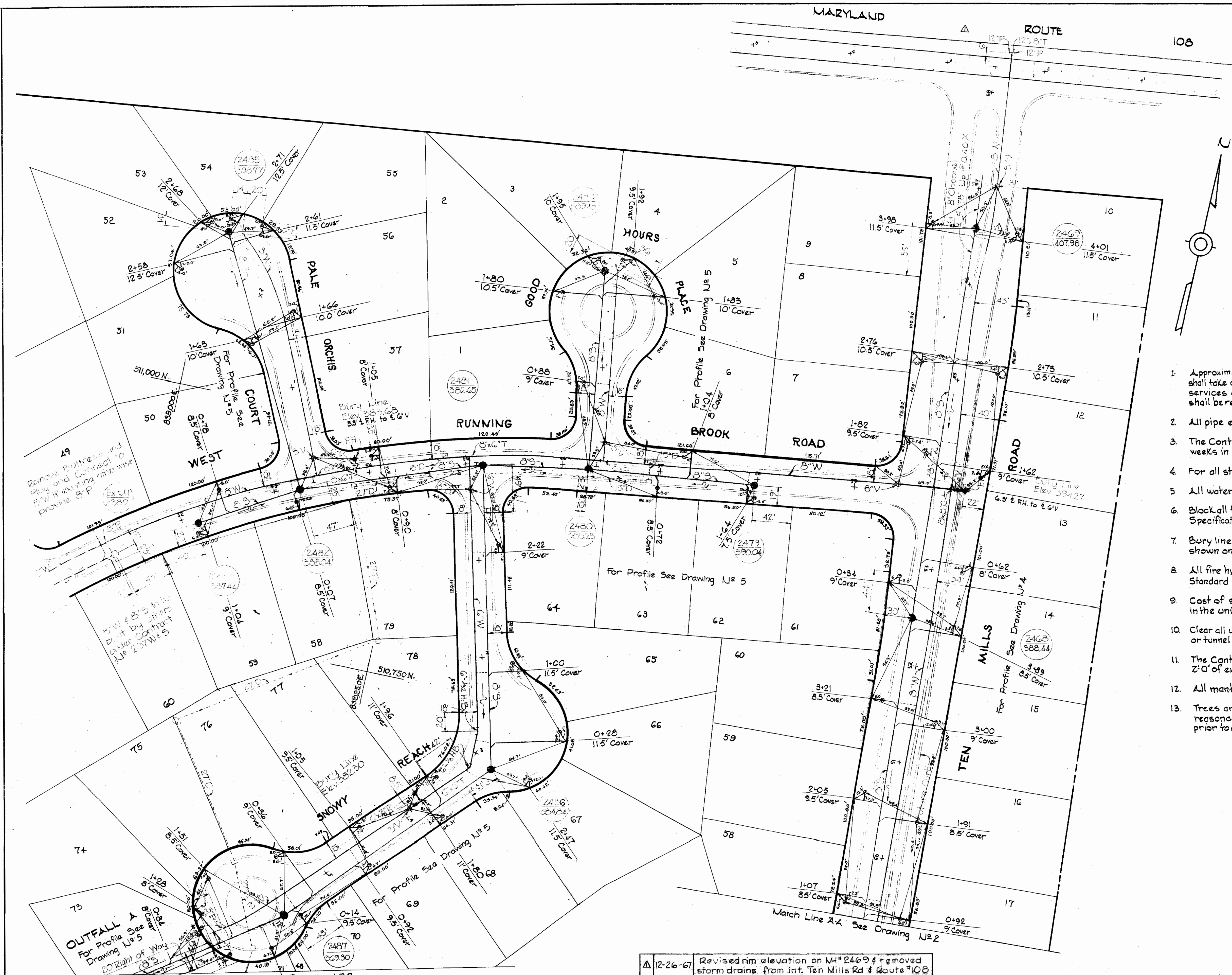


213-WS/1

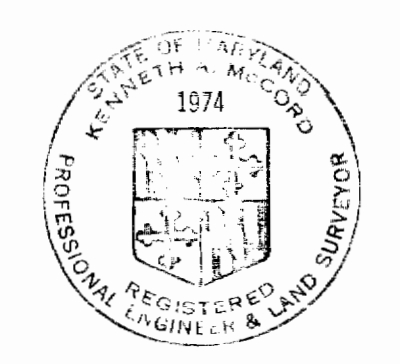


VICINITY MAP

Scale: 1"=2330'

GENERAL NOTES

1. Approximate location of existing mains are shown. The Contractor shall take all necessary precautions to protect existing mains and services and maintain uninterrupted supply. Any damage incurred shall be repaired immediately.
2. All pipe elevations shown are invert elevations.
3. The Contractor shall locate existing utilities a minimum of two weeks in advance of construction operations in vicinity of utilities.
4. For all standard details see standards bound in Specifications.
5. All water mains to be C.I.P. or D.I.P. and have a minimum of 3 1/2' cover.
6. Block all fittings with concrete, see standard details bound in Specifications.
7. Bury line elevations on fire hydrants shall be set to the elevations shown on the drawings.
8. All fire hydrants to be buttressed with concrete in accordance with Standard Detail W-4.
9. Cost of strapping fire hydrants and valves to be included in the unit price bid for furnishing and laying of water mains.
10. Clear all utilities by a minimum of 6' clear all poles by 2'-0" minimum or tunnel as required.
11. The Contractor shall provide a joint in all sewer mains within 2'-0" of exterior manhole walls.
12. All manholes shall be 4'-0" inside diameter.
13. Trees are to be protected from damage to the maximum extent reasonable. Trees which are to remain will be marked by the engineer prior to commencing of construction operations.



Kenneth M. Lord

Δ 12-26-67	Revised rim elevation on MH#2469 & removed storm drains from int. Ten Mills Rd & Route 108	
No.	Date	Revision

H.G. Elev. 567

WHITMAN, REQUARDT & ASSOCIATES
 ENGINEERS
 1304 ST. PAUL ST.
 BALTIMORE, MARYLAND

HOWARD COUNTY METROPOLITAN COMMISSION
 DATE 11/8/67
 W. O. Liburt
 CHIEF ENGINEER

CONTRACT NO. 213 WS

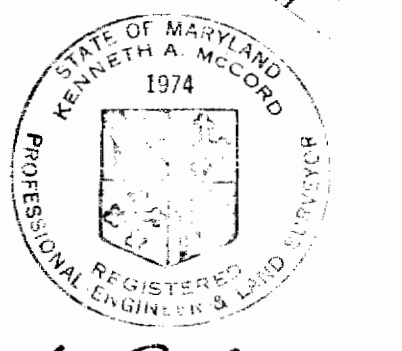
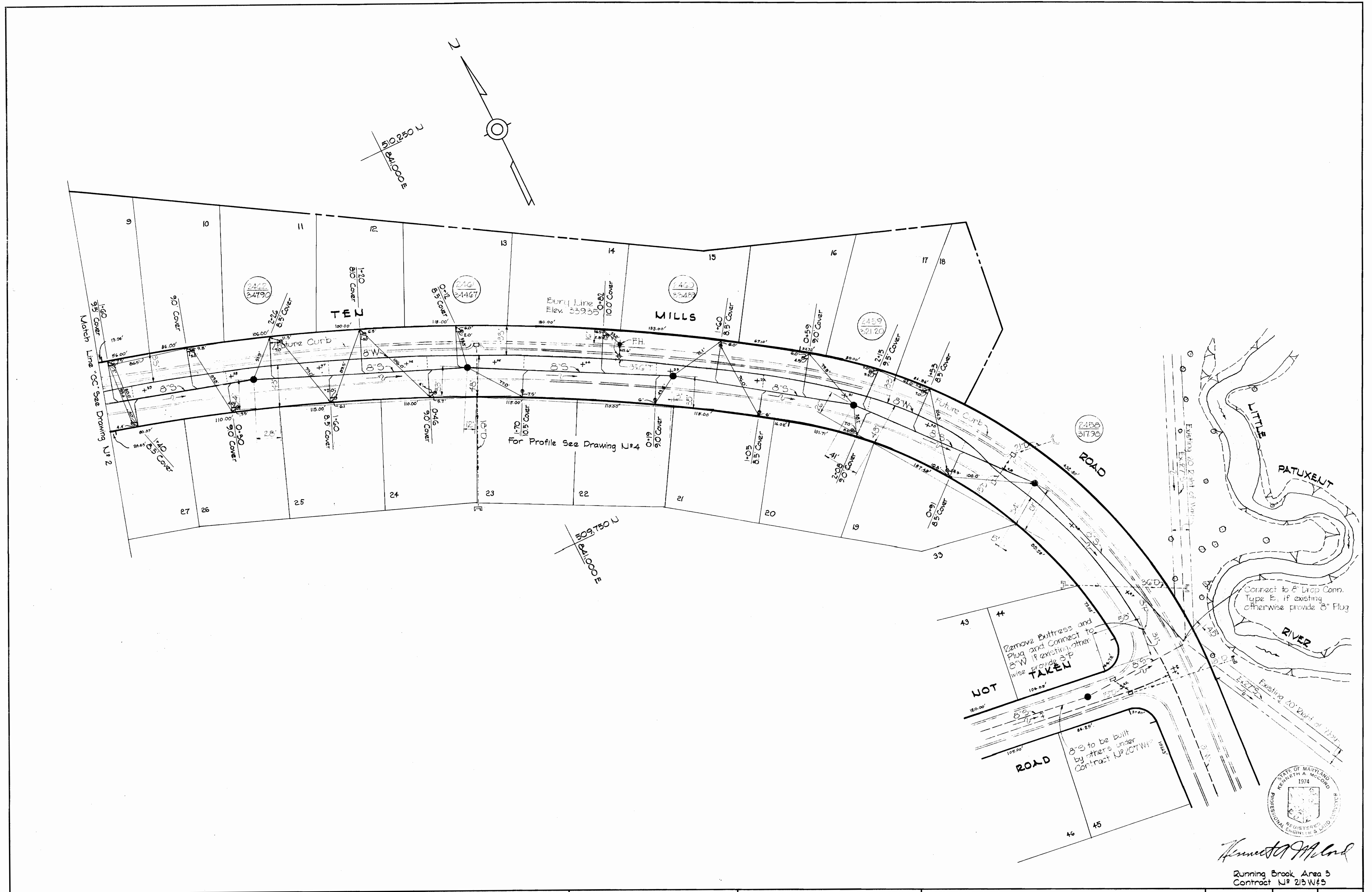
PLAN OF WATER & SEWER MAINS

COLUMBIA VILLAGE OF WILDE LAKE
 ELECTION DISTRICT - CLARKSVILLE No. 5

DRAWING NO. 1 OF 5

SCALE AS SHOWN
 51-480
 510-480
 FB#3982

WS 213-WS/3



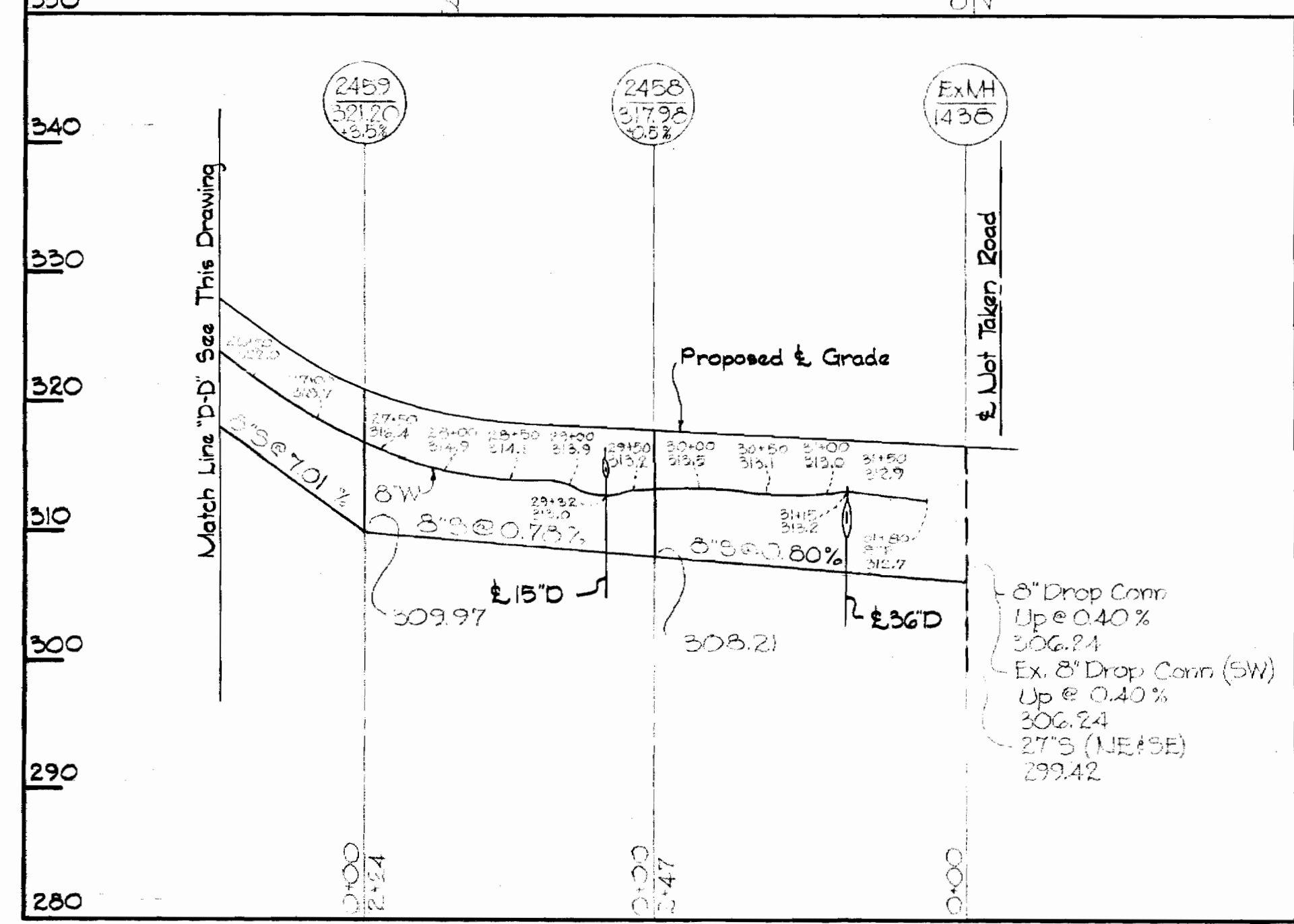
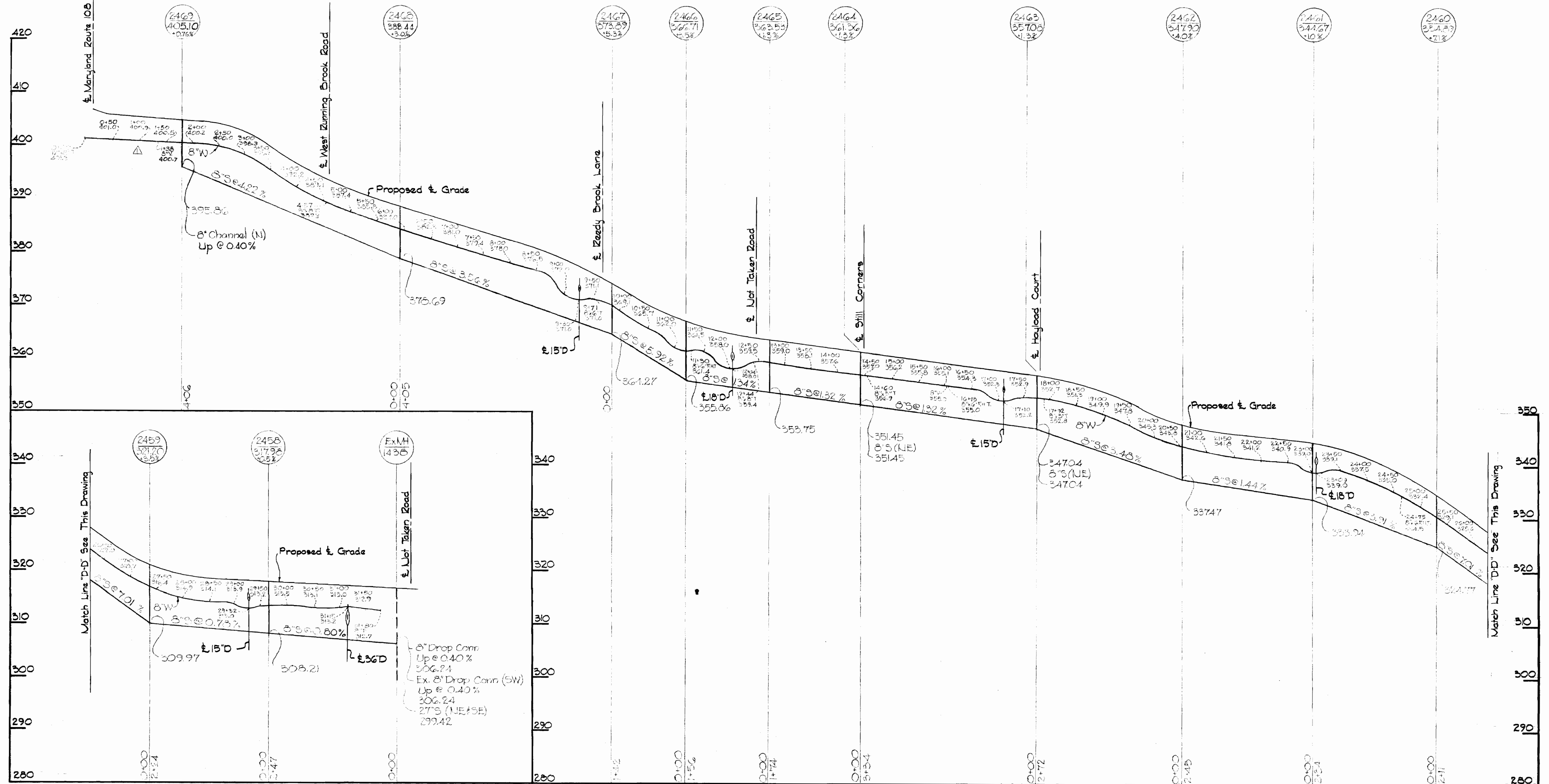
Kenneth A. McLeod

Running Brook Area 3
Contract No. 213 W&S

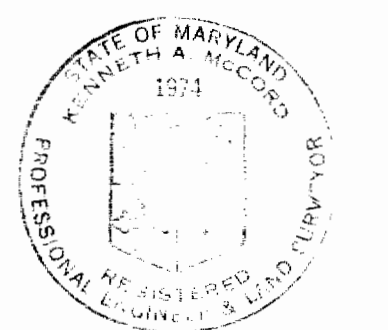
WHITMAN, REQUARDT & ASSOCIATES ENGINEERS 1304 ST. PAUL ST. BALTIMORE, MARYLAND	HOWARD COUNTY METROPOLITAN COMMISSION 11/8/67 <i>W. O. F. [Signature]</i> DATE CHIEF ENGINEER	CONTRACT NO. 213 W&S	PLAN OF WATER & SEWER MAINS	COLUMBIA VILLAGE OF WILDE LAKE ELECTION DISTRICT - CLARKSVILLE No. 5	DRAWING NO. 3 OF 5 SCALE 1" = 50' 510-481 509-482 509-481
---	--	----------------------	--------------------------------	--	---

TEN MILLS ROAD

For Plan See Drawing No's 1,2,3



ALL SEWER MAINS - ACP CLASS 2400
ALL WATER MAINS - CAST IRON



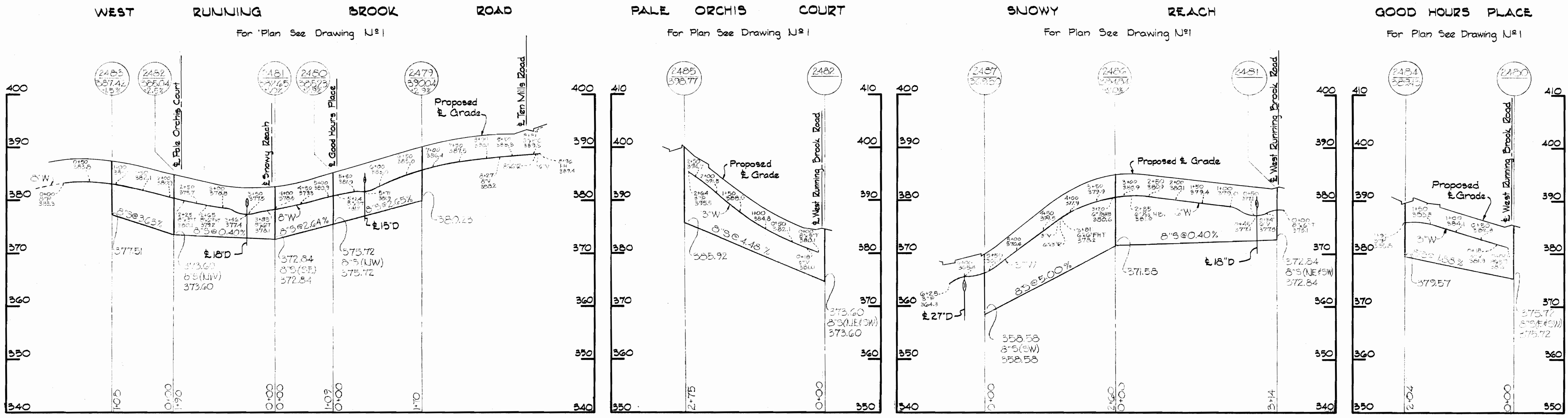
Kenneth A. McCord

Δ 12-26-67	Revised water main profile & grade Ten Mills Rd. from Sta. 0+10 to 3+50 f.M.H. 2469 Rim Elev.
No. Date	Revision

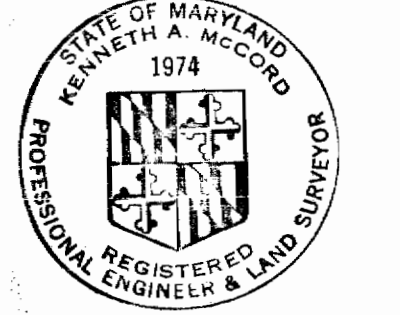
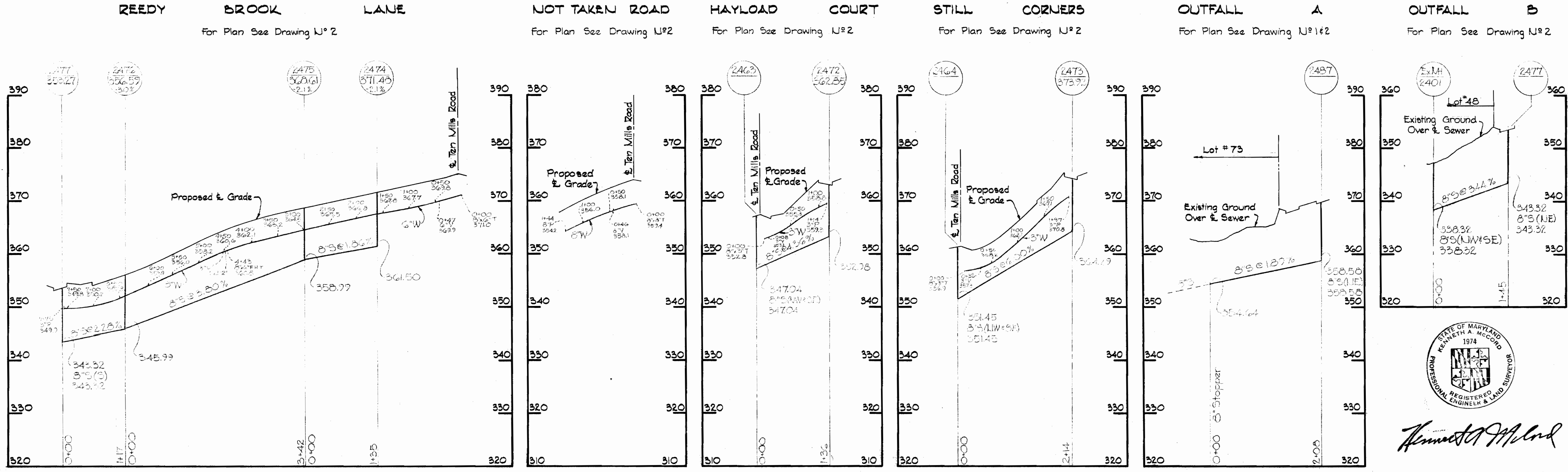
Running Brook Area 3
Contract No. 213 W&S

WHITMAN, REQUARDT & ASSOCIATES ENGINEERS 1304 ST. PAUL ST. BALTIMORE, MARYLAND	HOWARD COUNTY METROPOLITAN COMMISSION 11/8/67 DATE <i>W.O. Libbert</i> CHIEF ENGINEER	CONTRACT NO. 213 W&S	PROFILES OF WATER & SEWER MAINS	COLUMBIA VILLAGE OF WILDE LAKE ELECTION DISTRICT - CLARKSVILLE No. 5	DRAWING NO. 4 OF 5	SCALE V:1"=10' H:1"=100'
					APRIL 29, 1968	

213-W&S-4



ALL SEWER MAINS - ACP CLASS 2400
ALL WATER MAINS - CAST IRON



Kenneth A. McCord

Running Brook Area 3
Contract N# 213 W# 5

WHITMAN, REQUARDT & ASSOCIATES ENGINEERS 1304 ST. PAUL ST. BALTIMORE, MARYLAND	HOWARD COUNTY METROPOLITAN COMMISSION 11/8/67 DATE <i>W.O. Fubal</i> CHIEF ENGINEER	CONTRACT NO. 213 W&S	PROFILES OF WATER & SEWER MAINS	COLUMBIA VILLAGE OF WILDE LAKE ELECTION DISTRICT - CLARKSVILLE No.5	DRAWING NO. 5 OF 5 SCALE V1"=10' H1"=100'
--	--	---------------------------------	--	--	--

W. O. 5735-2

AS BUILT APRIL 29, 1968

WS 213-W5/5