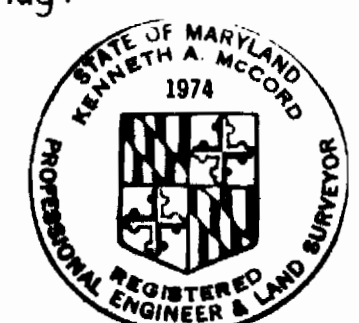


VICINITY MAP
Scale: 1" = 2330'

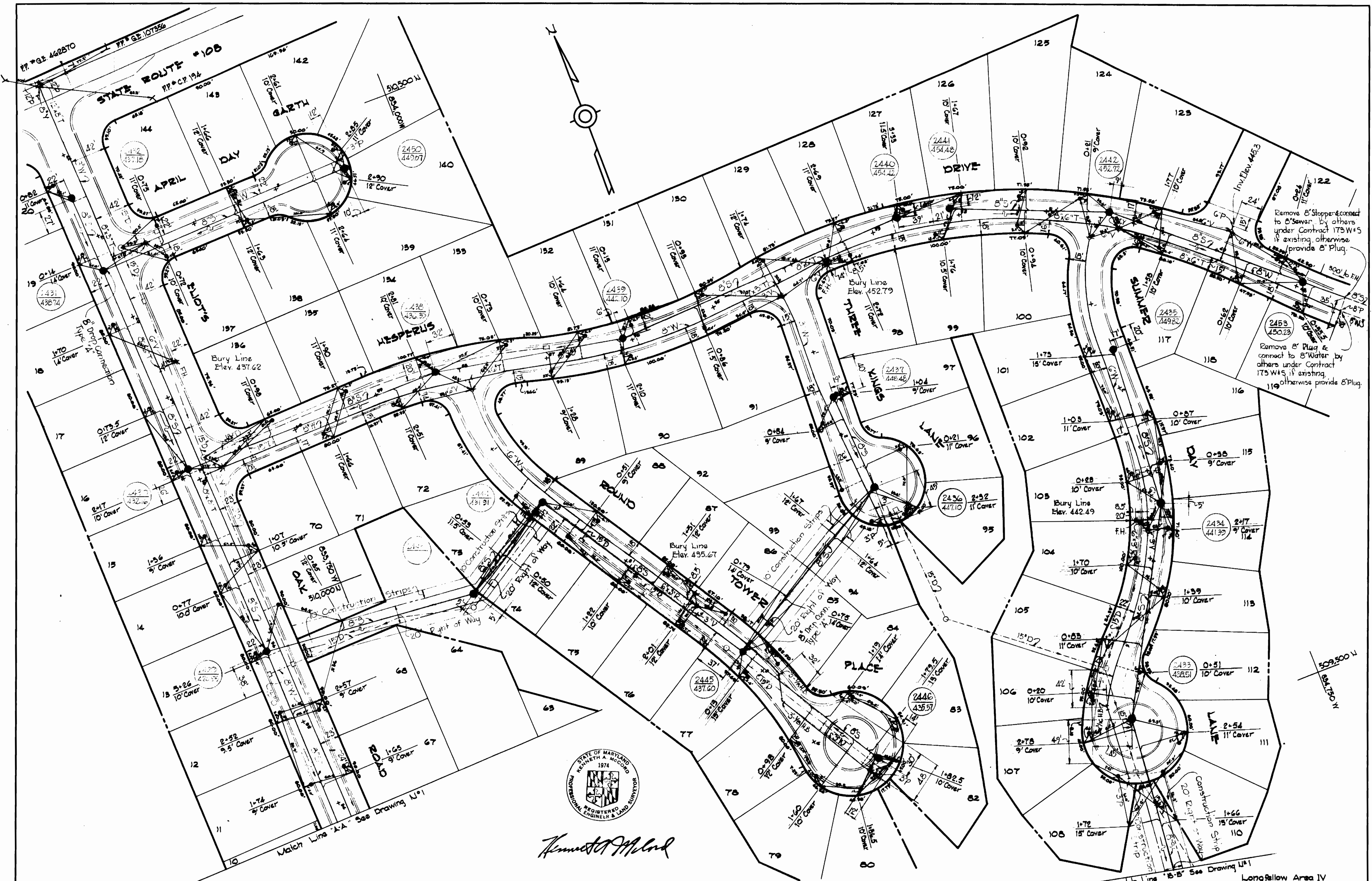


Kenneth A. McCord

Longfellow Area IV
Contract No. 21 W & S

WHITMAN, REQUARDT & ASSOCIATES ENGINEERS 1304 ST. PAUL ST. BALTIMORE, MARYLAND	HOWARD COUNTY METROPOLITAN COMMISSION DATE 11-2-67 <i>W. O. F. Whit</i> CHIEF ENGINEER	CONTRACT NO. 21 W & S	PLAN OF WATER & SEWER MAINS	COLUMBIA VILLAGE OF HARPER'S CHOICE ELECTION DISTRICT-CLARKSVILLE No. 5	DRAWING NO. 1 OF 4 SCALE AS SHOWN
---	---	-----------------------	--------------------------------	---	--------------------------------------

E. E. ELLIOTT CO. INC.



Kenneth A. McLeod

WHITMAN, REQUARDT & ASSOCIATES
ENGINEERS
1304 ST. PAUL ST.
BALTIMORE, MARYLAND

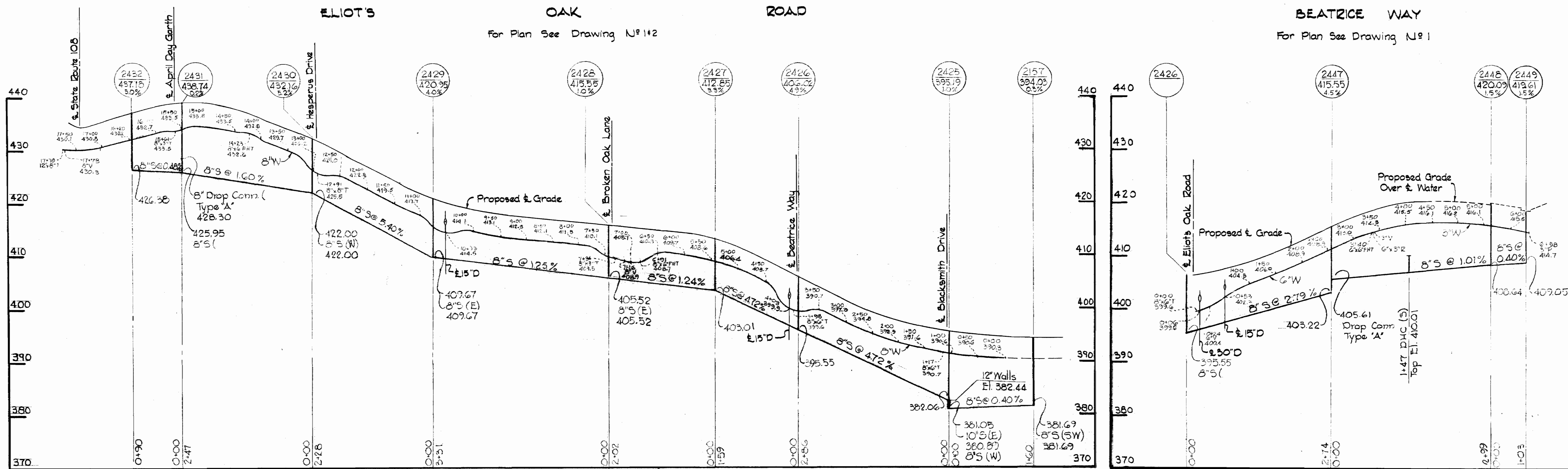
HOWARD COUNTY METROPOLITAN COMMISSION
DATE 11-2-67
W. O. Felt
CHIEF ENGINEER

CONTRACT NO. 21 W&S

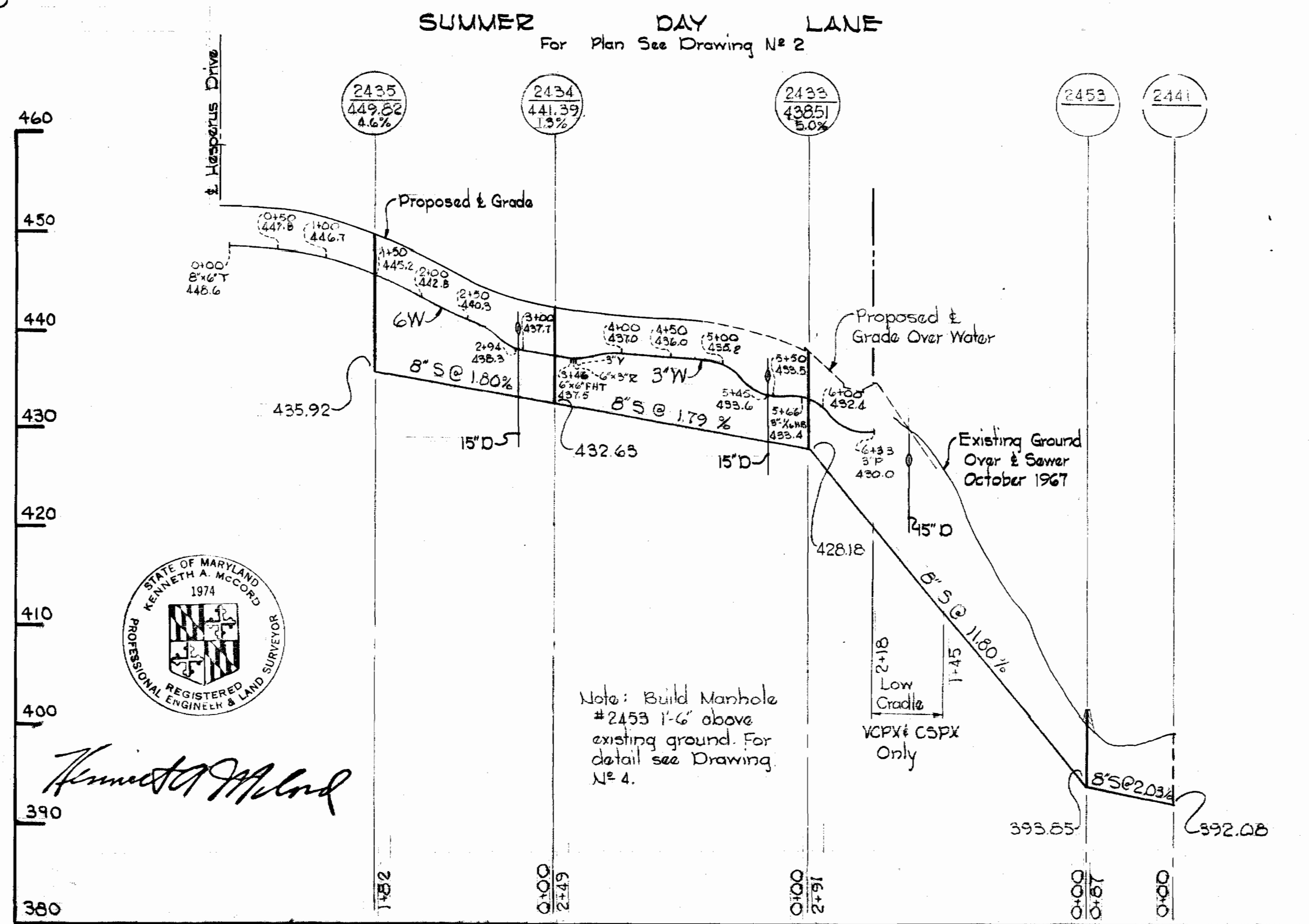
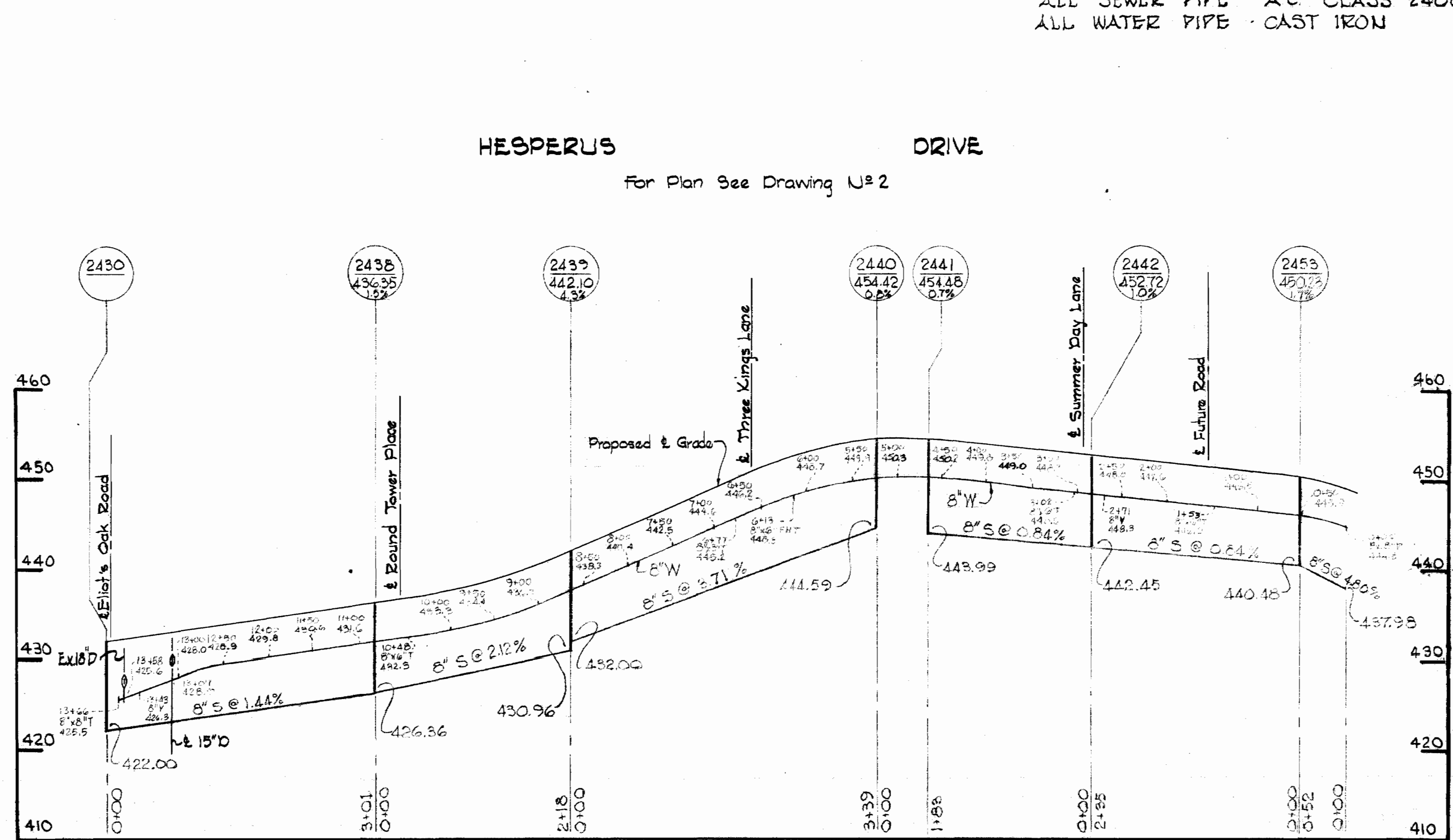
PLAN OF
WATER & SEWER MAINS

COLUMBIA
VILLAGE OF HARPER'S CHOICE
ELECTION DISTRICT - CLARKVILLE No. 5

DRAWING NO. 2 OF 4
SCALE 1"=50'



ALL SEWER PIPE - A.C CLASS 2400
 ALL WATER PIPE - CAST IRON



WHITMAN, REQUARDT & ASSOCIATES
 ENGINEERS
 1304 ST. PAUL ST.
 BALTIMORE, MARYLAND

HOWARD COUNTY METROPOLITAN COMMISSION
 11-2-67
 DATE
W. O. Whitman
 CHIEF ENGINEER

CONTRACT NO. 211-W&S

PROFILES OF
 WATER & SEWER MAINS

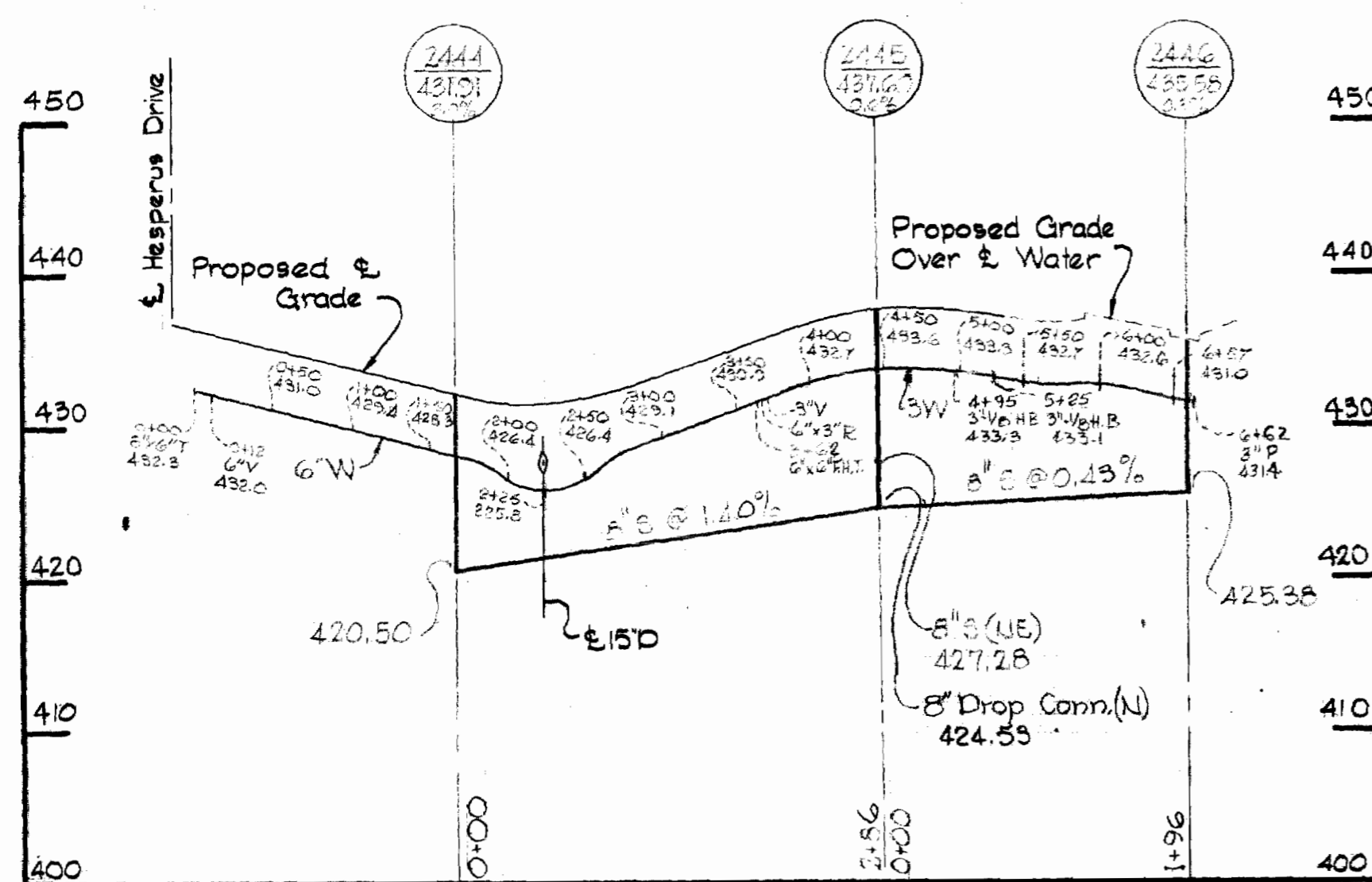
COLUMBIA
 VILLAGE OF HARPERS CHOICE
 ELECTION DISTRICT-CLARKSVILLE No.5

DRAWING
 NO. 3
 OF 4
 SCALE
 H:1"=100'
 V:1"=10'

WS 211-WS/3

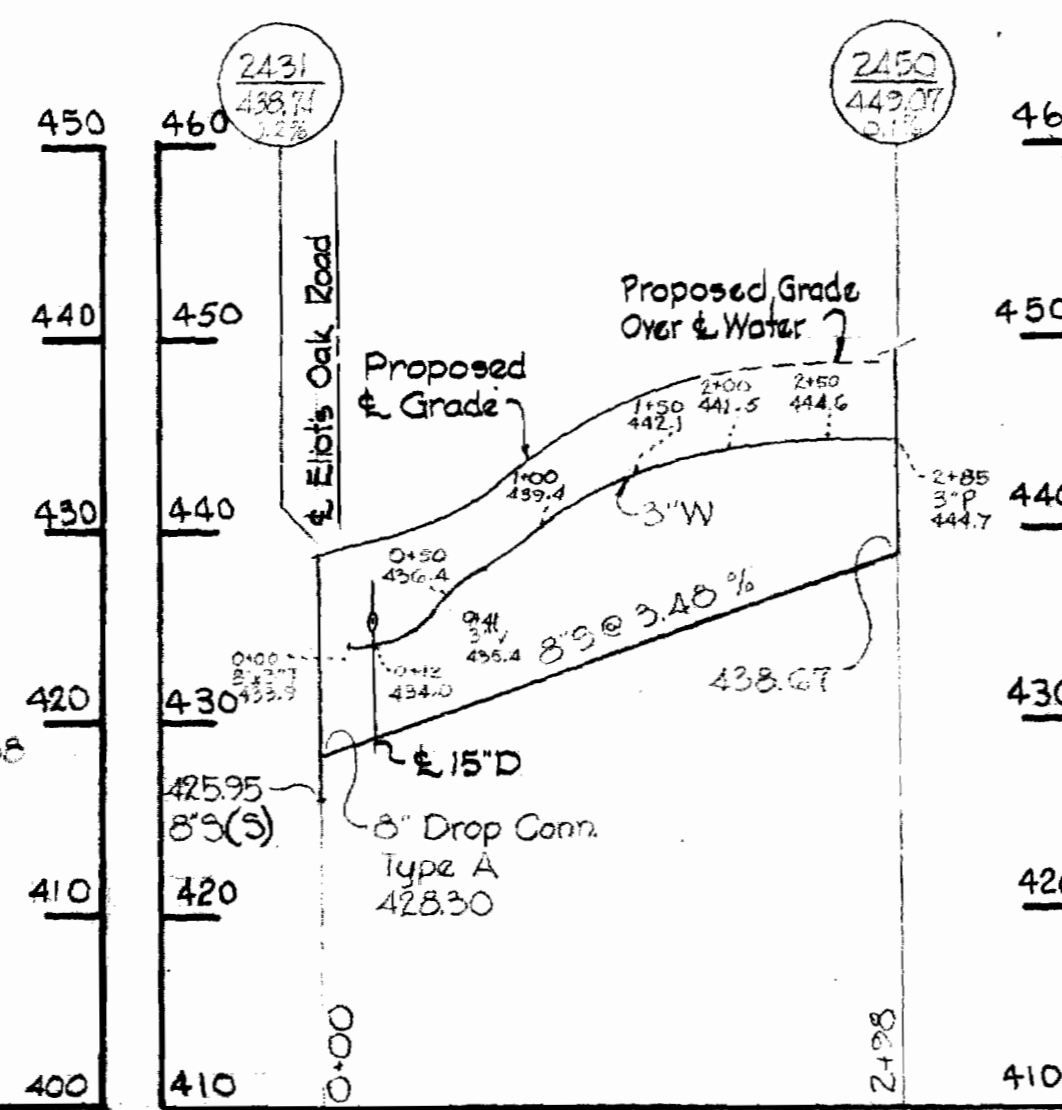
ROUND TOWER PLACE

For Plan See Drawing N# 2



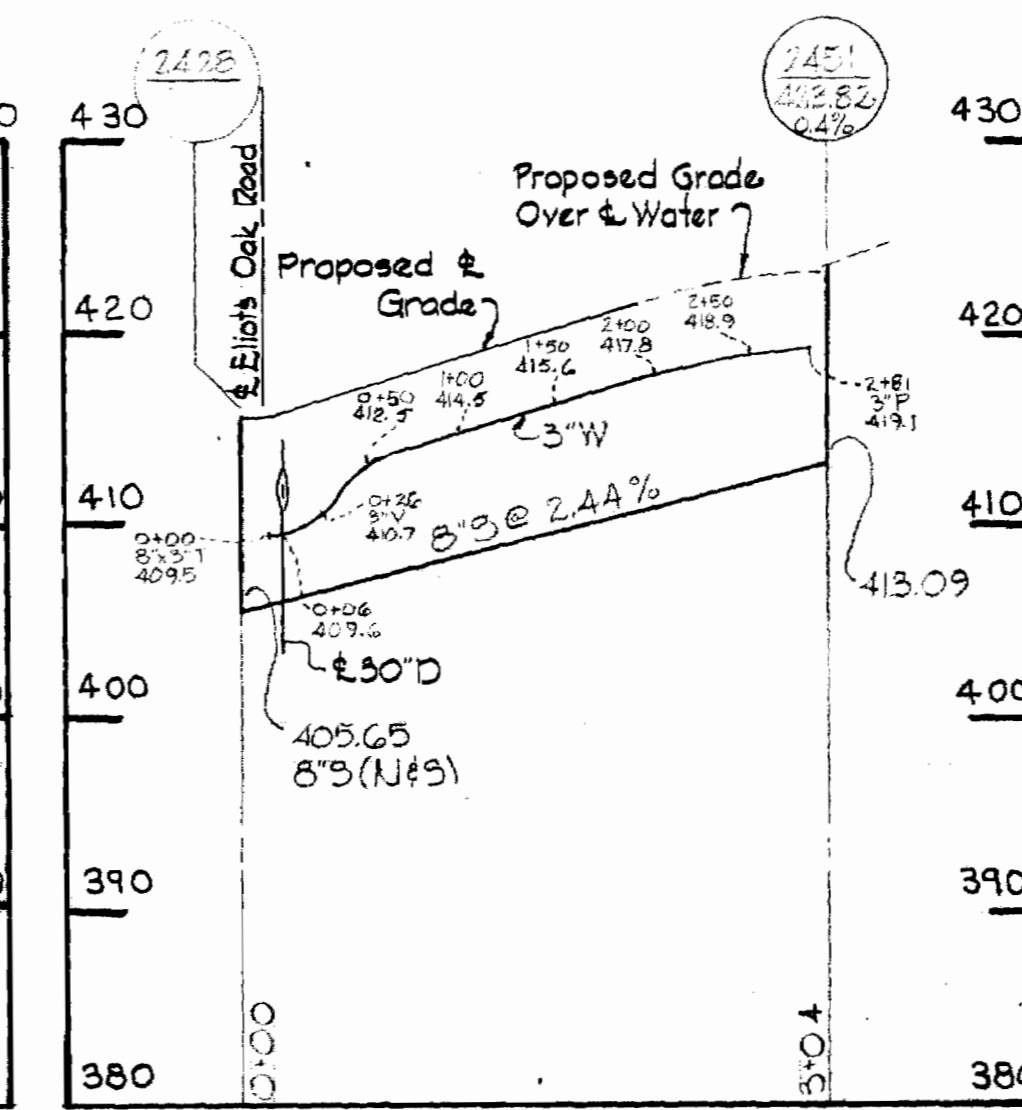
APRIL DAY GARTH

For Plan See Drawing N# 2



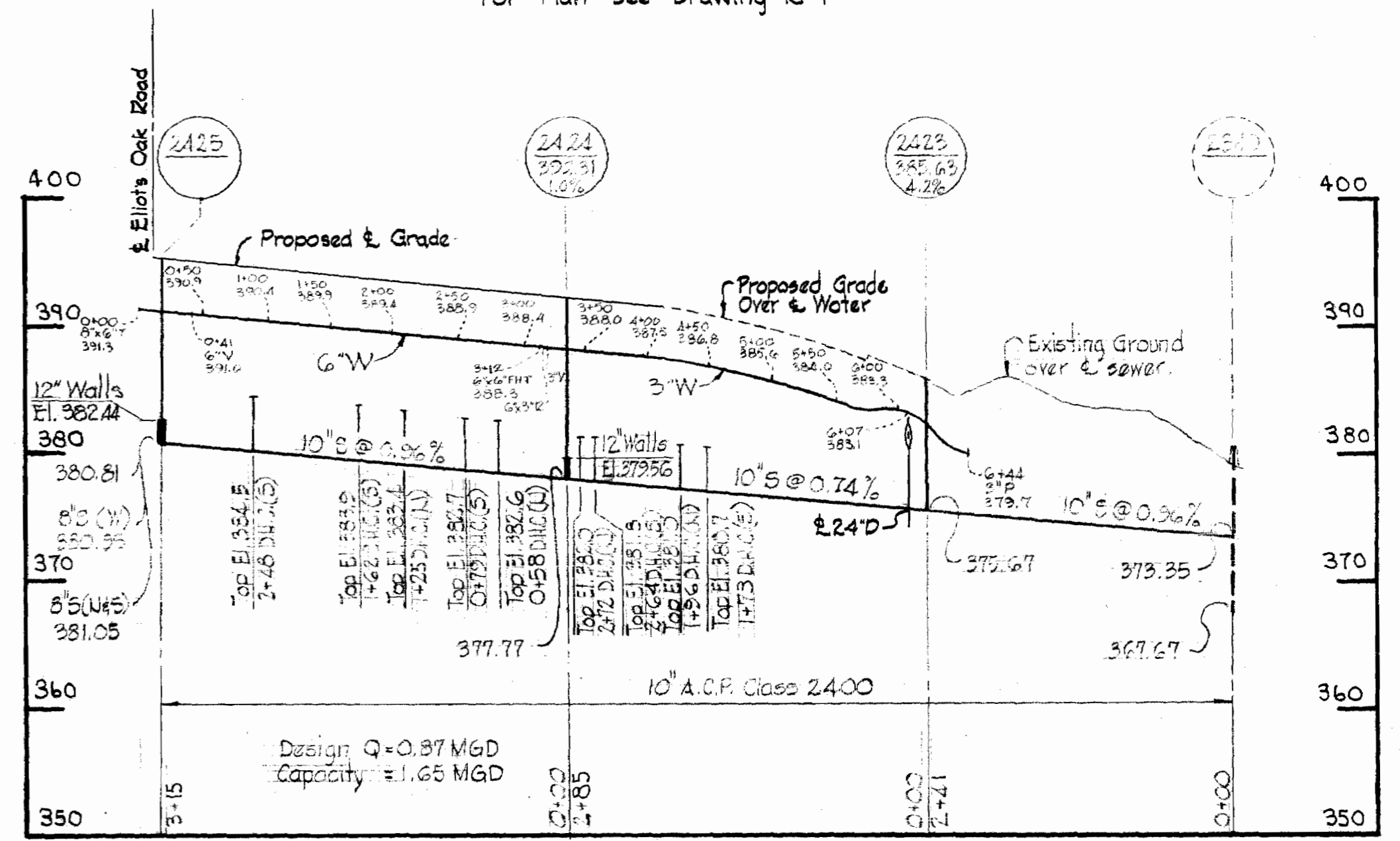
BROKEN OAK LANE

For Plan See Drawing N# 1

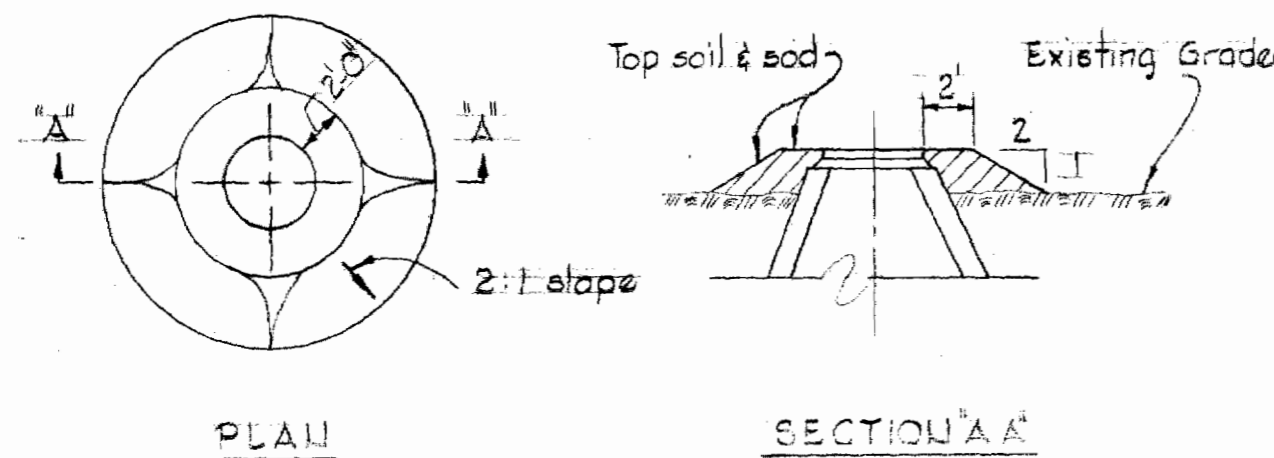


BLACKSMITH DRIVE

For Plan See Drawing N# 1



ALL SEWER PIPE - A.C. CLASS 2400
ALL WATER PIPE - CAST IRON

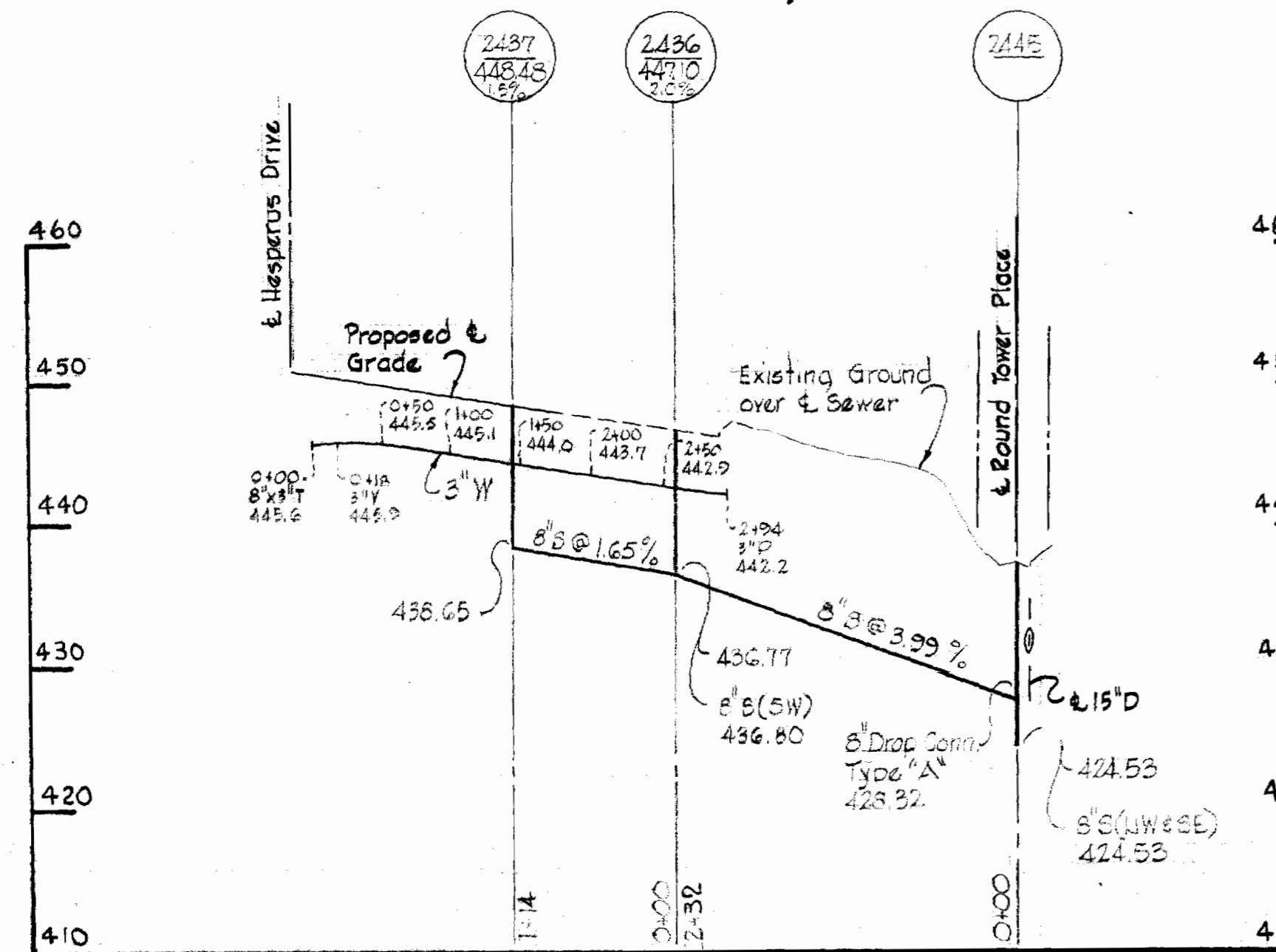


FILL AT MANHOLE

Scale: 1/2" = 1'-0"

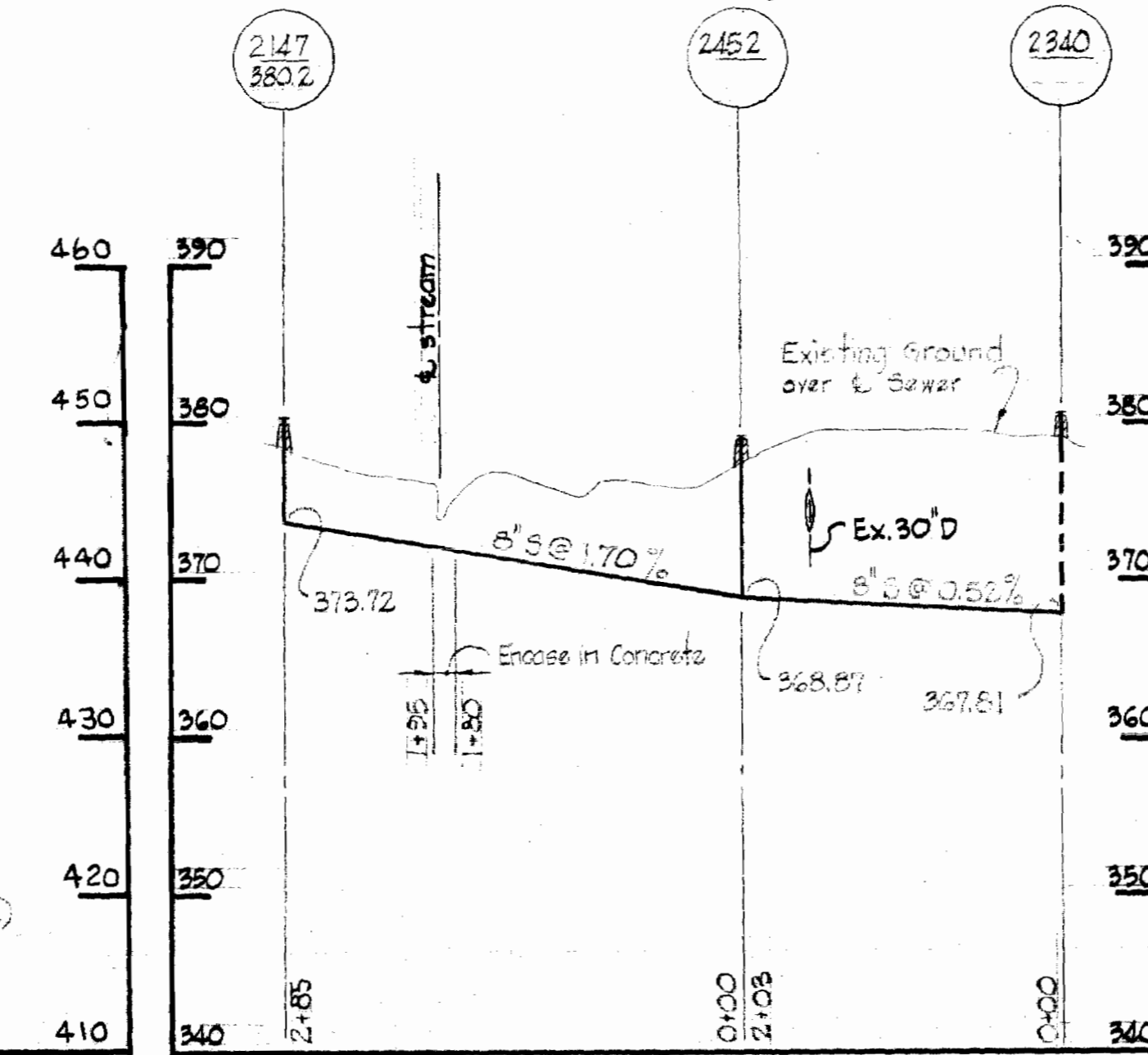
THREE KINGS LANE

For Plan See Drawing No. 2



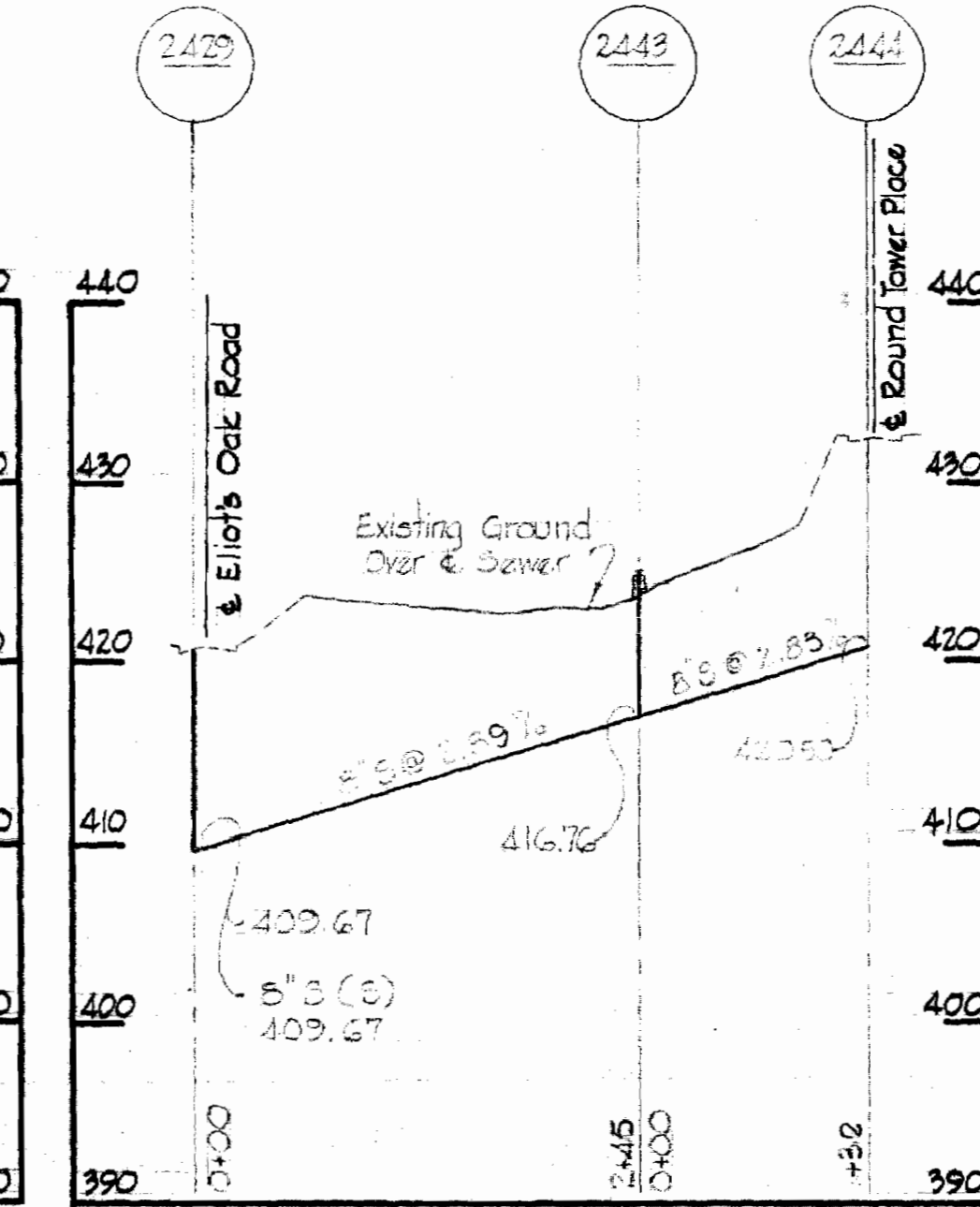
OUTFALL

For Plan See Drawing No. 1



OUTFALL

For Plan See Drawing No. 2



GENERAL NOTES

1. Approximate location of existing utilities are shown. The Contractor shall take all necessary precaution to protect the existing utilities and to maintain uninterrupted service. Any Damage incurred due to Contractor's operations shall be repaired immediately at the Contractor's expense.
2. All pipe elevations shown are invert elevations.
3. The Contractor shall test pit existing utilities, where directed by the Engineer, a minimum of two weeks in advance of construction operations.
4. For all details not shown on drawing see Standards bound in Specifications.
5. Block all fittings with concrete, see Standards bound in Specifications.
6. Bury line elevation on fire hydrants shall be set to elevations shown on the drawings.
7. Buttress Fire Hydrants with concrete. Provide 3/4" copper pipe from drainhole to gravel bed for positive drainage. For Buttress dimensions use standard detail W-8", Buttress for caps.
8. Sewer Manholes shall be 4'-0" inside diameter except where otherwise noted.
9. All water mains to be cast iron pipe or ductile iron pipe.
10. Sewer house connections shall be 6" pipe sloped up at 2% from main sewer except where shown on plan as 1%.
11. Trees are to be protected against damage to the maximum extent reasonable. Trees which are to remain in streets and other rights of way will be marked by the Engineer prior to commencing of construction operations.
12. Construct channel in Manholes for all 6" SHC entering therein.
13. A pipe joint shall be provided in each sewer main within 2'-0" from exterior of manhole walls.
14. Water house connections shall be 3/4" diameter copper pipe layed 3 1/2 feet below established grade.



Kenneth A. McLeod

Contract No. 211 W&S
Longfellow Area IV

WHITMAN, REQUARDT & ASSOCIATES
ENGINEERS
1304 ST. PAUL ST.
BALTIMORE, MARYLAND

HOWARD COUNTY METROPOLITAN COMMISSION
11-2-67
DATE
W. O. F. [Signature]
CHIEF ENGINEER

CONTRACT NO. 211-W&S

PROFILES OF
WATER & SEWER MAINS

COLUMBIA
VILLAGE OF HARPERS CHOICE
ELECTION DISTRICT CLARKSVILLE No. 5

DRAWING
NO. 4
OF 4
SCALE
H:1"=100'
V:1"=10'

211-WS/4

S