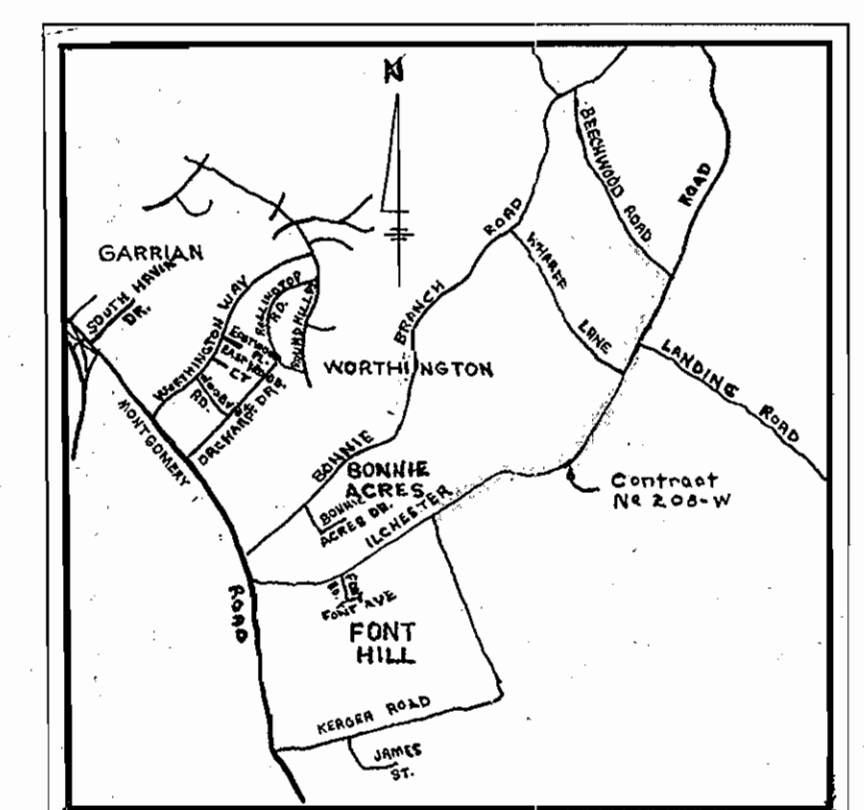
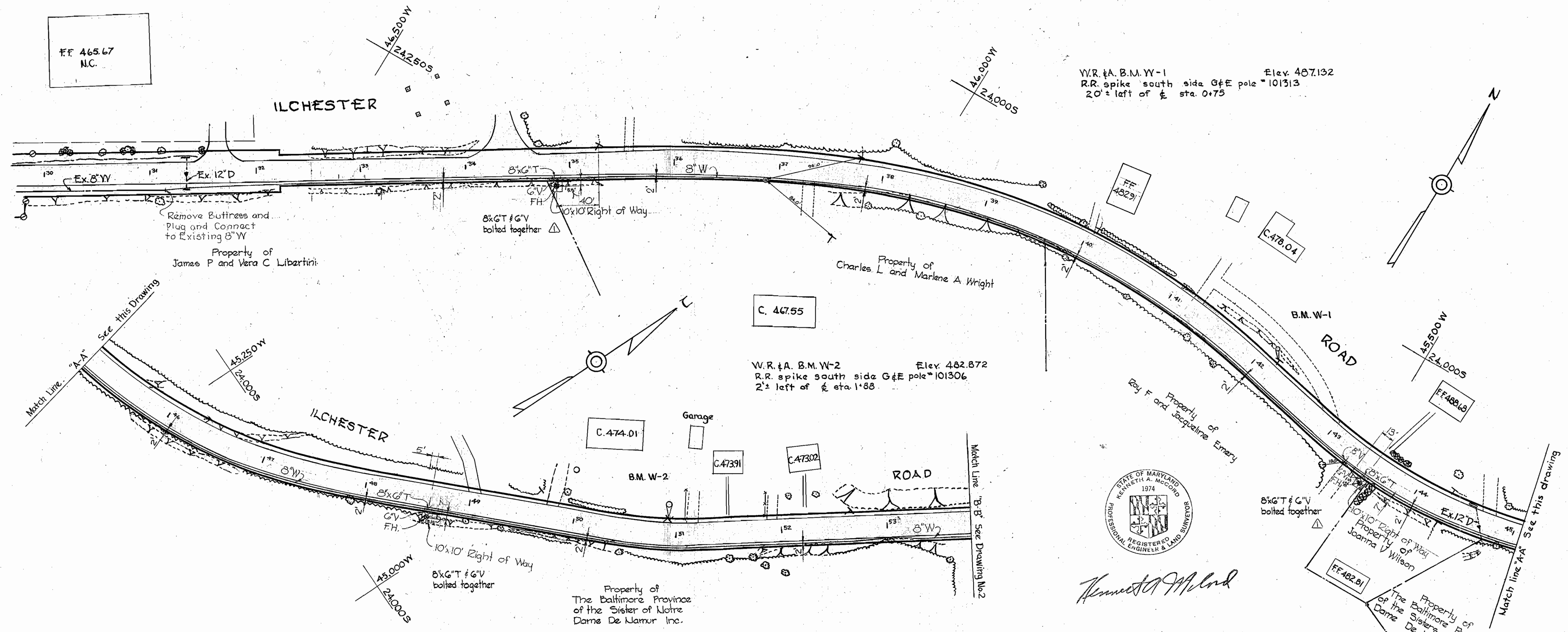


- ### GENERAL NOTES
1. Approximate locations of existing mains are shown. The Contractor shall take all necessary precautions to protect existing mains and services and maintain uninterrupted supply. Any damage incurred shall be repaired immediately.
 2. All pipe elevations shown are invert elevations.
 3. The Contractor shall locate existing utilities a minimum of two weeks in advance of construction operations in vicinity of utilities.
 4. For all standard details see standards bound in Specifications.
 5. All water mains to be C.I.P. or D.I.P. and have minimum of 3 1/2' cover.
 6. Block all fittings with concrete, see standard details bound in Specifications.
 7. Bury line elevation on fire hydrants shall be set the same as edge of paving, top of curb, or as directed by the Engineer in the field.
 8. All Fire Hydrants shall be buttressed with concrete in accordance with standard Detail W-4.
 9. Cost of strapping Fire Hydrants and Valves to tees to be included in the unit price bid for furnishing and laying of water mains.
 10. Clear all utilities by a minimum of 6', clear all poles by 2'-0" minimum or tunnel as required.



VICINITY MAP
Scale: 1" = 1/2 mile.



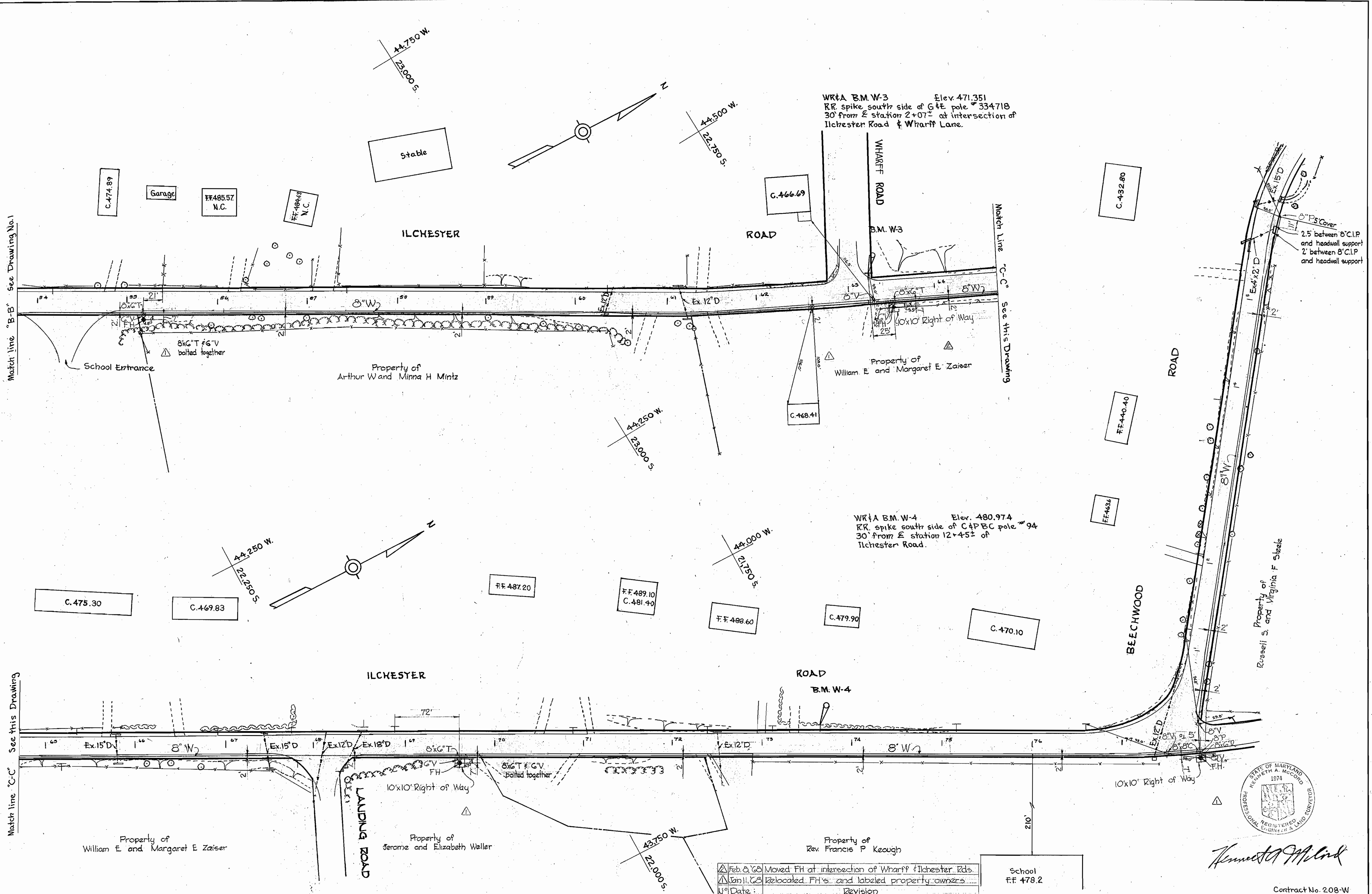
Jan 11, 68	Relocated F.H.'s and labeled property owners.
Date:	Revision

WHITMAN, REQUARDT & ASSOCIATES ENGINEERS 1304 ST. PAUL ST. BALTIMORE, MARYLAND	HOWARD COUNTY METROPOLITAN COMMISSION 12-6-67 DATE	CONTRACT NO. 208-W W O Libartini CHIEF ENGINEER	PLAN OF WATER MAINS	ELECTION DISTRICT ELKRIDGE No. 1	DRAWING NO. 1 OF 3	SCALE AS SHOWN
					JUN 6, 1968 AS BUILT	FB 3024 4.001

W. O. 5839-2

WS 208-W/1

WS 208-W/2



W.R.#A B.M. W-3 Elev. 471.351
 RR spike south side of G+E pole # 33471B
 30' from E station 2+07.2 at intersection of
 Ilchester Road & Wharff Lane.

W.R.#A B.M. W-4 Elev. 480.974
 RR spike south side of C+PBC pole # 94
 30' from E station 12+45.2 of
 Ilchester Road.



Kenneth A. McCord

Feb. 0, 68 Moved FH at intersection of Wharff & Ilchester Rds.
 Jan. 11, 68 Relocated FH's and labeled property owners
 Date: _____ Revision

School
 F.F. 478.2

Contract No. 208-W

WHITMAN, REQUARDT & ASSOCIATES ENGINEERS 1304 ST. PAUL ST. BALTIMORE, MARYLAND	HOWARD COUNTY METROPOLITAN COMMISSION DATE: 12-6-67 <i>W. O. Sillit</i> CHIEF ENGINEER	CONTRACT NO. 208-W	PLAN OF WATER MAINS	ELECTION DISTRICT ELKRIDGE No. 1	DRAWING NO. 2 OF 3 SCALE 1" = 50'
--	--	---------------------------	----------------------------	---	--

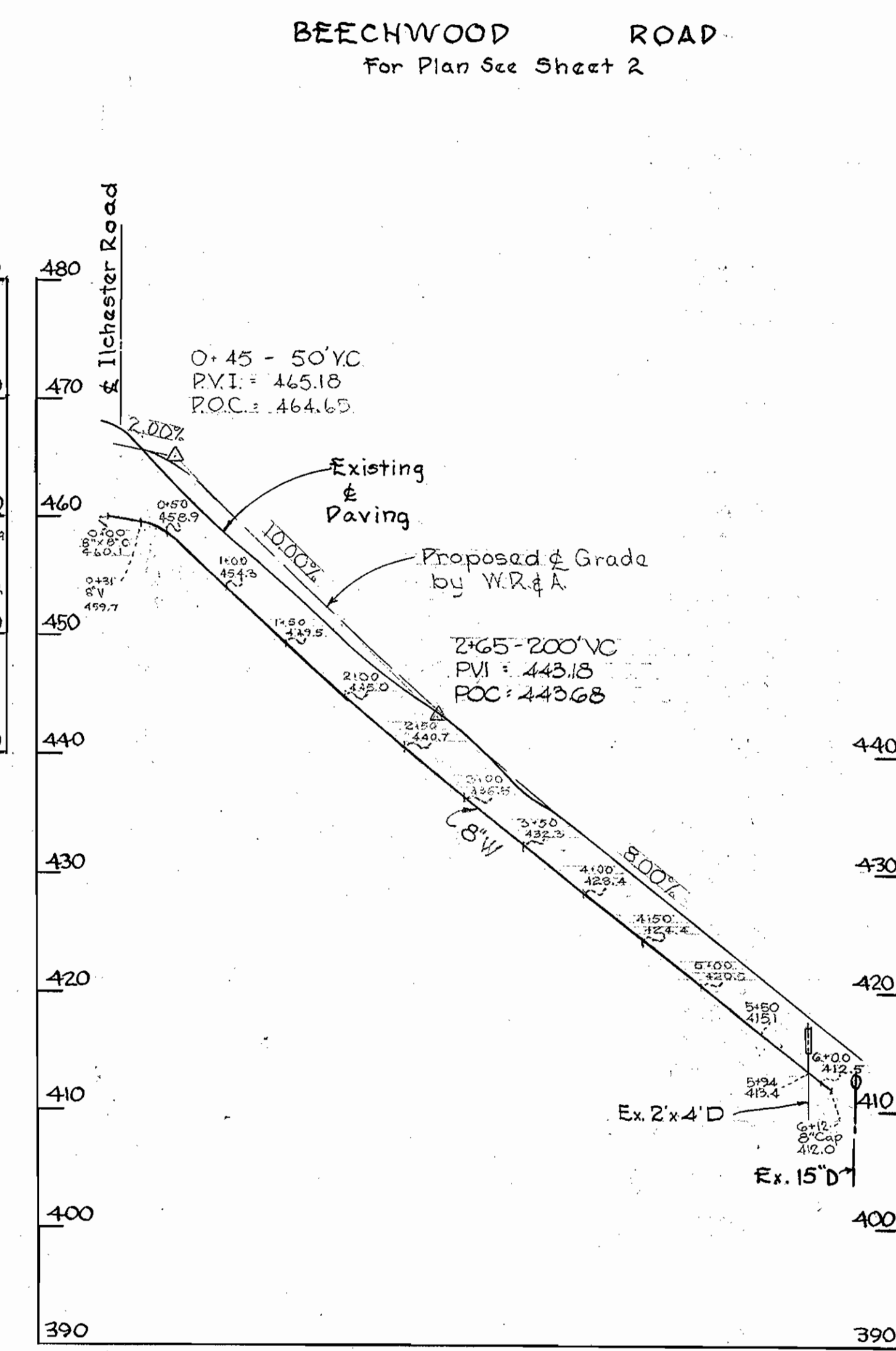
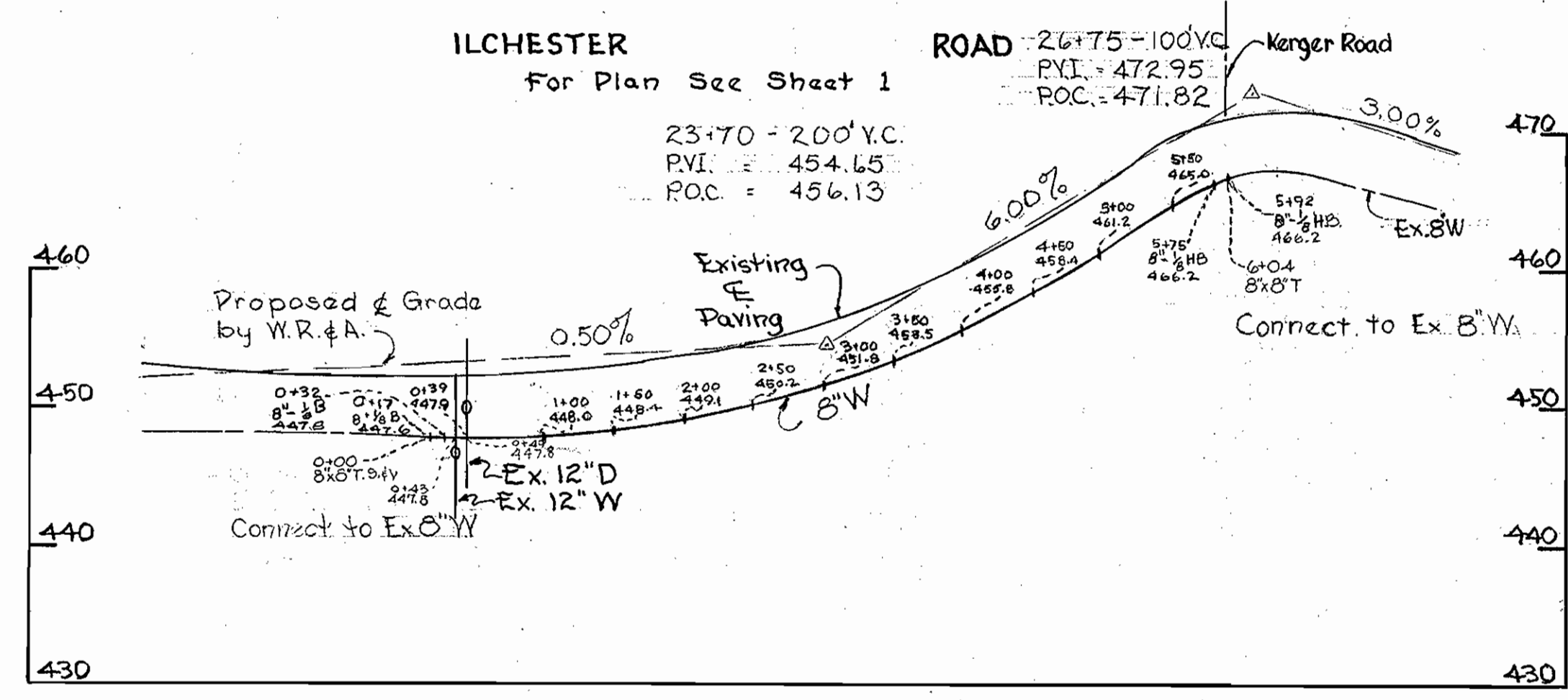
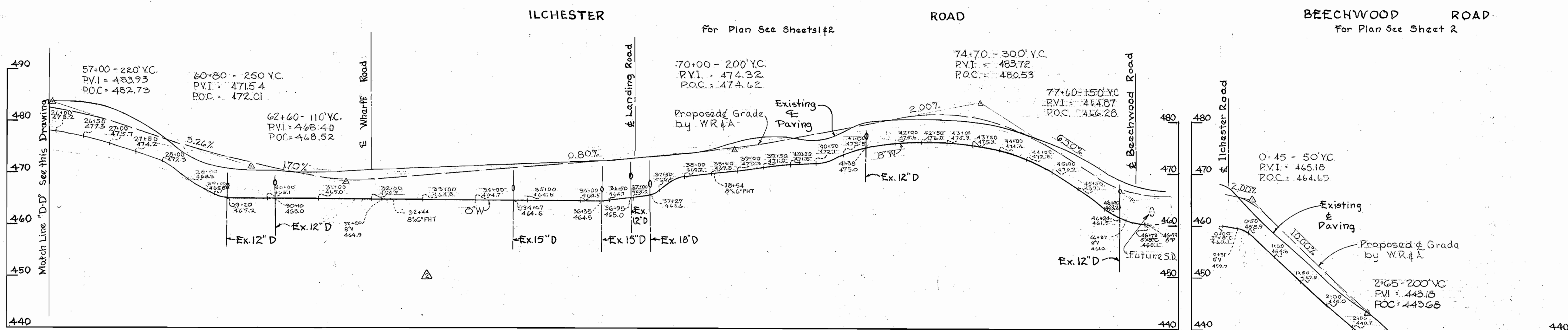
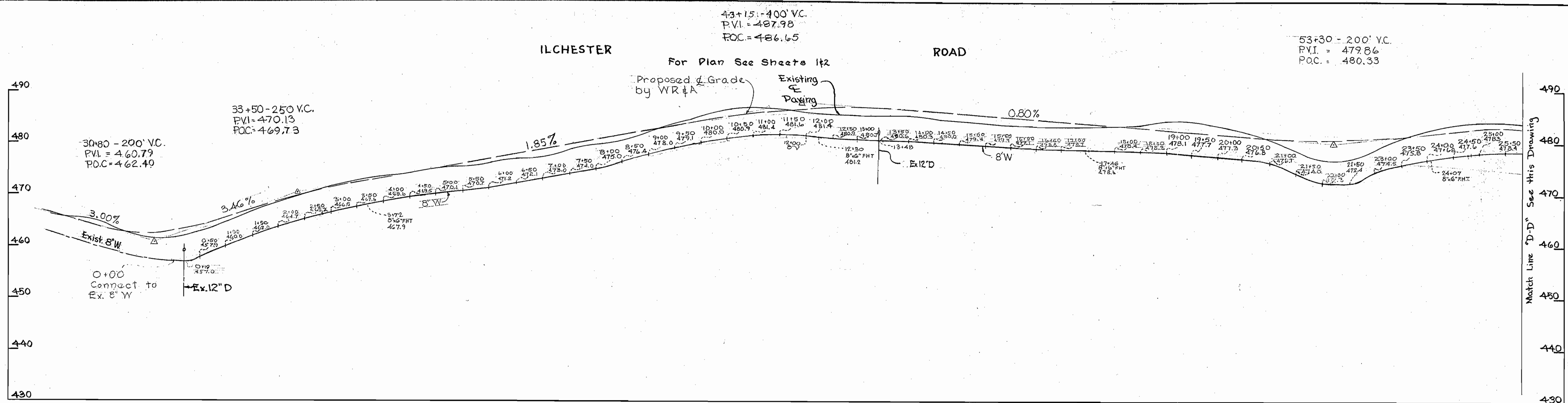
W. O. 5839-2

JUNE 6, 1968 F.B. 3024
 AS BUILT 4001
 4031

SUSPENSE

SUSPENSE

WS 208-W/3



Kenneth A. McCord

Feb 0, 68	Moved FH at intersection of Wharff Rd & Ilchester Road
Jan 11, 68	Relocated FH's and labeled property owners
U ^o Date:	Revision:

WHITMAN, REQUARDT & ASSOCIATES ENGINEERS 1304 ST. PAUL ST. BALTIMORE, MARYLAND	HOWARD COUNTY METROPOLITAN COMMISSION 12-6-67 <i>W. O. L. Hunt</i> DATE CHIEF ENGINEER	CONTRACT NO. 208-W	PROFILES OF WATER MAINS	ELECTION DISTRICT ELKRIDGE No. 1	DRAWING NO. 3 OF 3	SCALE H: 1"=100' V: 1"=10'	Contract No. 208-W AS BUILT JUNE 6, 1968