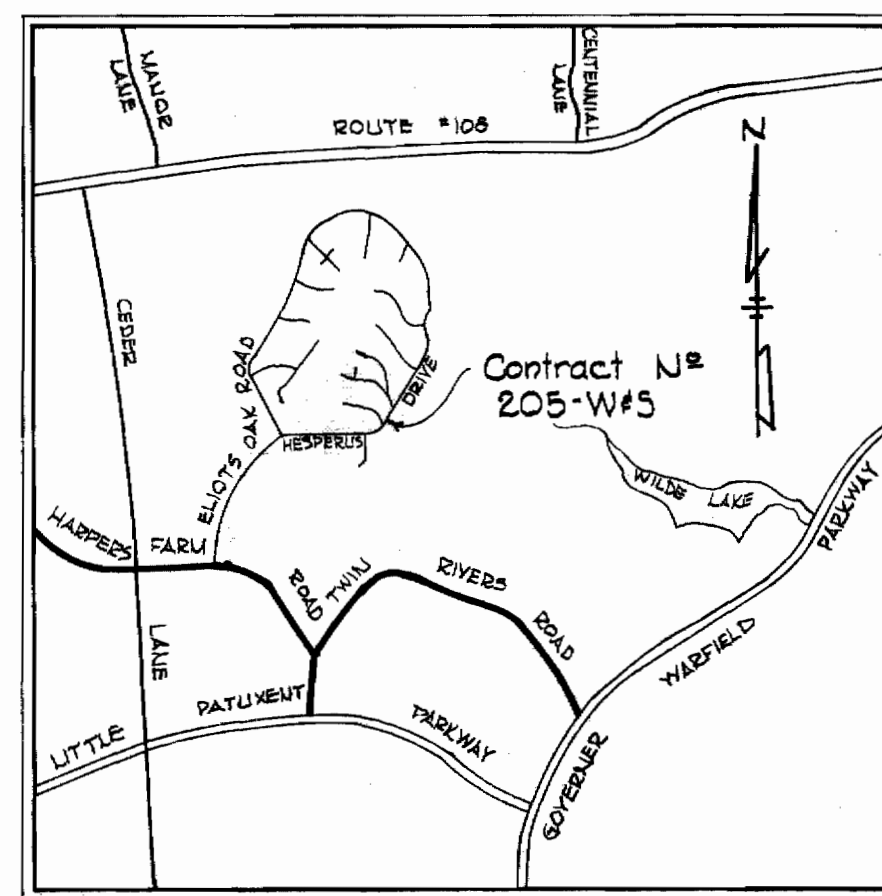


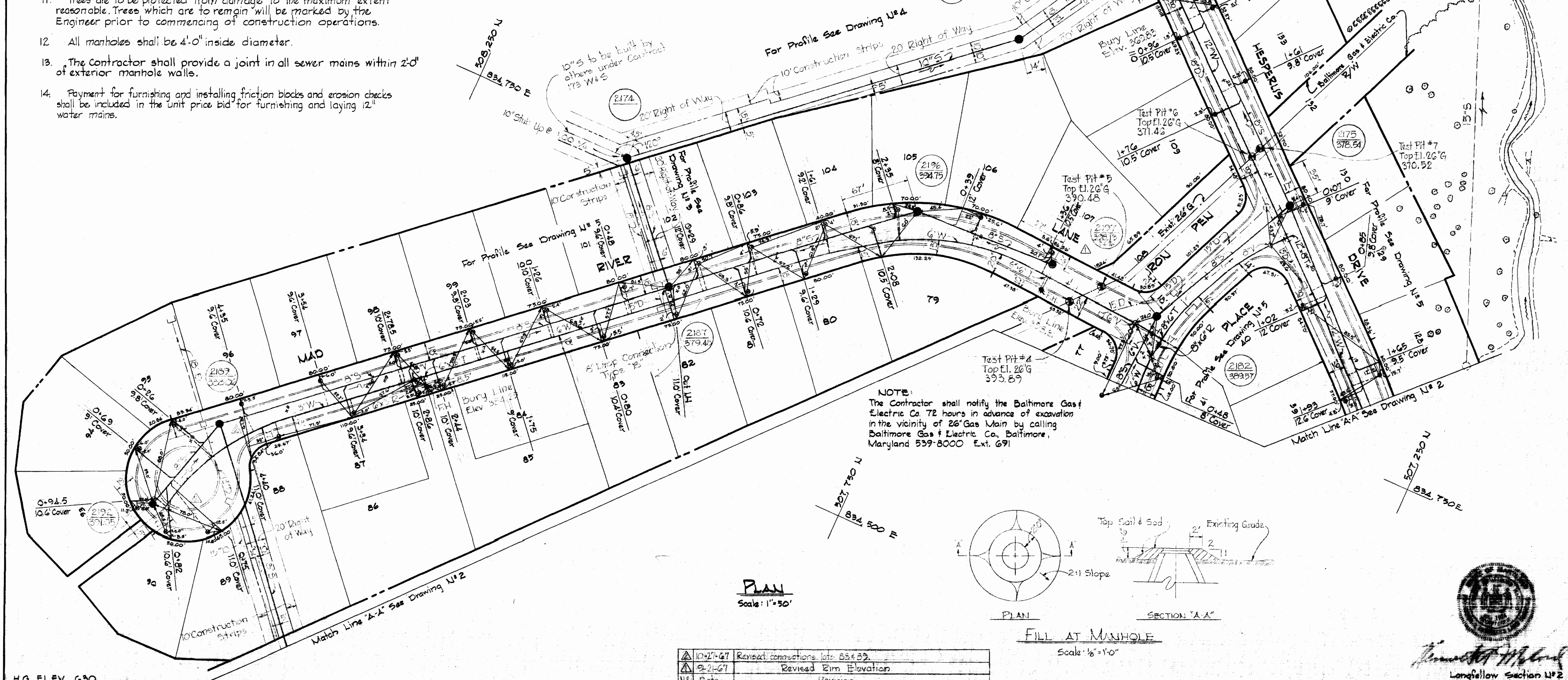
GENERAL NOTES

1. Approximate location of existing mains are shown. The Contractor shall take all necessary precautions to protect existing mains and services and maintain uninterrupted supply. Any damage incurred shall be repaired immediately.
2. All pipe elevations shown are invert or elevations.
3. The Contractor shall locate existing utilities a minimum of two weeks in advance of construction operations in vicinity of utilities.
4. For all standard details see standards bound in specifications.
5. All water mains to be C.I.P. or D.I.P. and have a minimum of 3 1/2' cover.
6. Block all fittings with concrete, see standard details bound in specifications.
7. Bury line elevations on fire hydrants shall be set to elevations shown on drawings.
8. All fire hydrants to be buttressed with concrete in accordance with standard Detail W-4.
9. Cost of strapping fire hydrants and valves to tees to be included in the unit price bid for furnishing and laying of water mains.
10. Clear all utilities by a minimum of 6", clear all poles by 2'-0" minimum or tunnel as required.
11. Trees are to be protected from damage to the maximum extent reasonable. Trees which are to remain will be marked by the Engineer prior to commencing of construction operations.
12. All manholes shall be 4'-0" inside diameter.
13. The Contractor shall provide a joint in all sewer mains within 2'-0" of exterior manhole walls.
14. Payment for furnishing and installing friction blocks and erosion checks shall be included in the unit price bid for furnishing and laying 12" water mains.

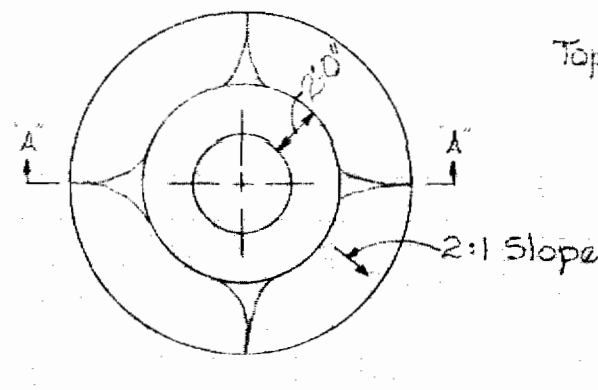


VICINITY MAP
Scale: 1"=250'

W.R. & A. B.M. #9-J Elev. 357.60
R.R. Spike Root Between the twins of a 36" twin Elm 140' from P.I. # S-129-J-23 at top of Strm. BK.
Ex. MH 1550
Rebuild Existing Manhole bottom to suit and connect 10" S



NOTE:
The Contractor shall notify the Baltimore Gas & Electric Co. 72 hours in advance of excavation in the vicinity of 26" Gas Main by calling Baltimore Gas & Electric Co., Baltimore, Maryland 539-8000 Ext. 691



FILL AT MANHOLE
Scale: 1/2"=1'-0"

10-27-67	Revised connections, into 55+89.
9-21-67	Revised Elm Elevation
11-1-67	Revisions

H.G. ELEV. 630

WHITMAN, REQUARDT & ASSOCIATES
ENGINEERS
1304 ST. PAUL ST.
BALTIMORE, MARYLAND

HOWARD COUNTY METROPOLITAN COMMISSION
DATE: 9-15-67
W. O. Pollock
CHIEF ENGINEER

CONTRACT NO. 205 W&S

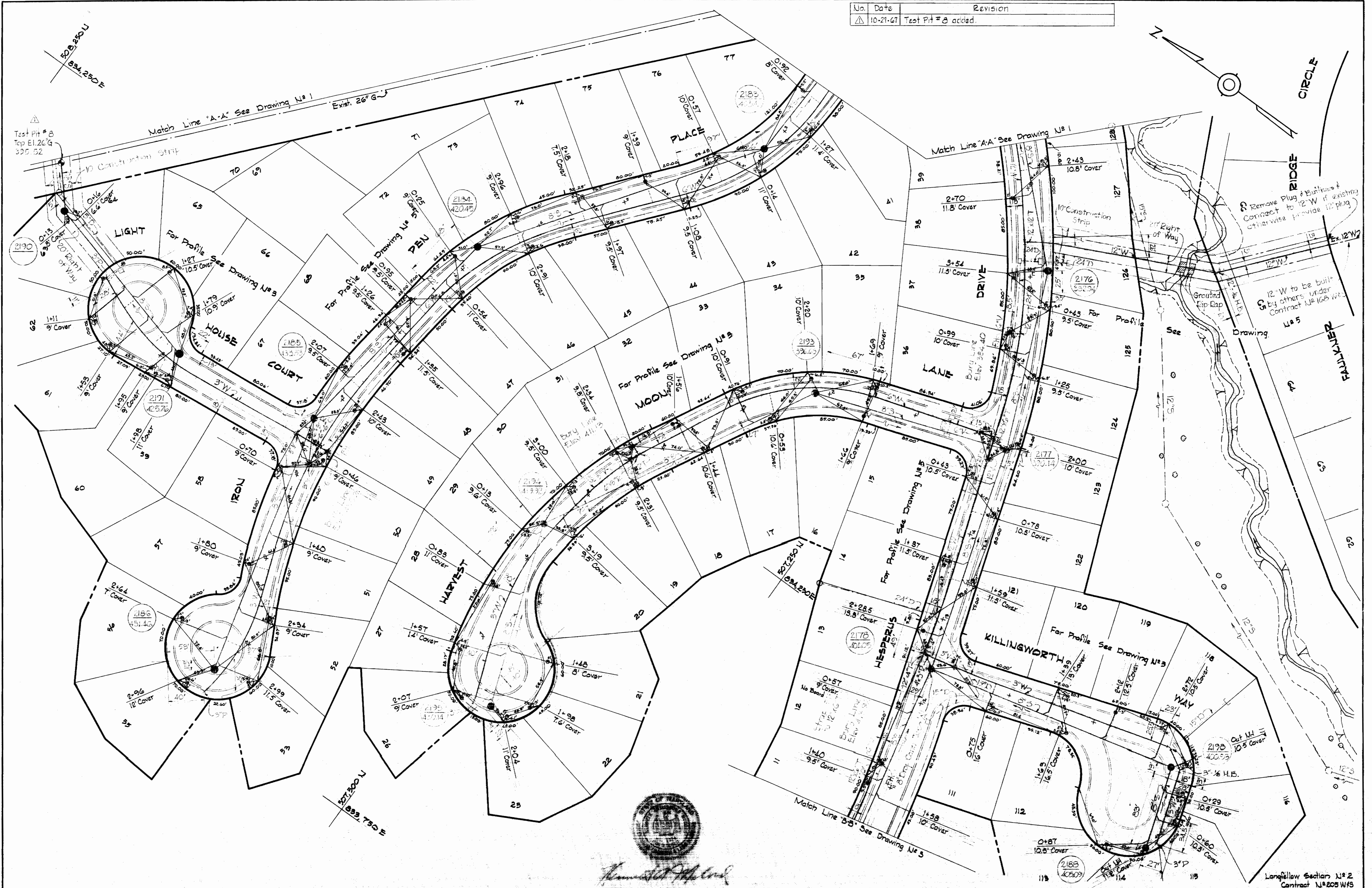
PLAN OF WATER & SEWER MAINS

COLUMBIA VILLAGE OF HARPER'S CHOICE
ELECTION DISTRICT-CLARKSVILLE No. 5

DRAWING NO. 1 OF 5
SCALE AS SHOWN
Longfellow Section No. 2
Contract No. 205 W&S

WS 205-W&S/1

No.	Date	Revision
1	10-21-67	Test Pit # 8 added.

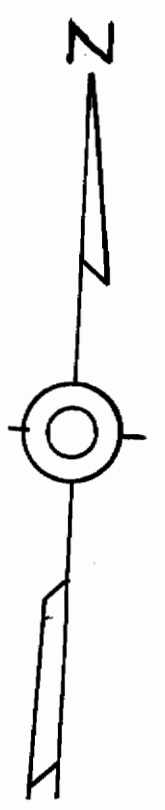
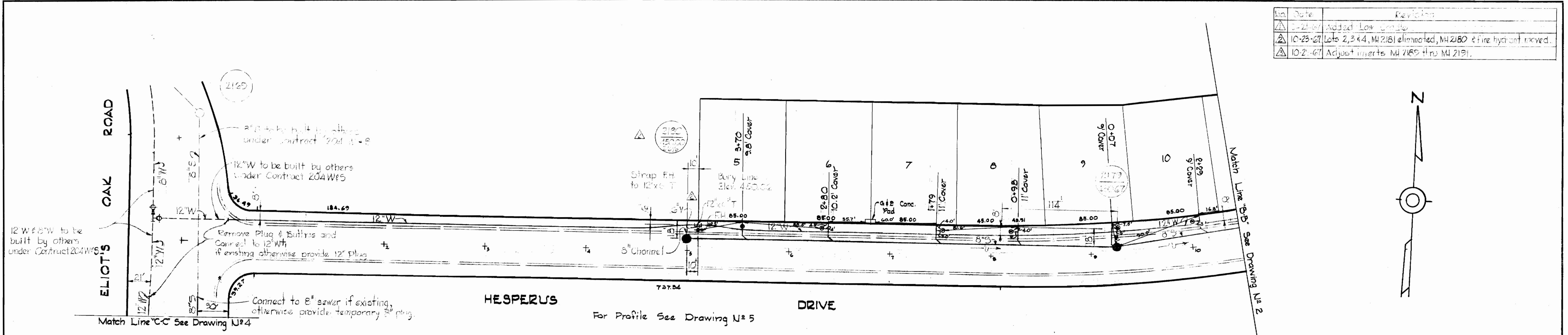


Howard C. [Signature]

WHITMAN, REQUARDT & ASSOCIATES ENGINEERS 1304 ST. PAUL ST. BALTIMORE, MARYLAND	HOWARD COUNTY METROPOLITAN COMMISSION 9-15-67 <i>W O [Signature]</i> DATE CHIEF ENGINEER	CONTRACT NO. 205 W&S	PLAN OF WATER & SEWER MAINS	COLUMBIA VILLAGE OF HARPER'S CHOICE ELECTION DISTRICT-CLARKVILLE No. 5	DRAWING NO. 2 OF 5	SCALE 1"=50' <small>507-476 507-477 505-476</small>
					AS BUILT APRIL 22, 1968	

WS 205-WS/2

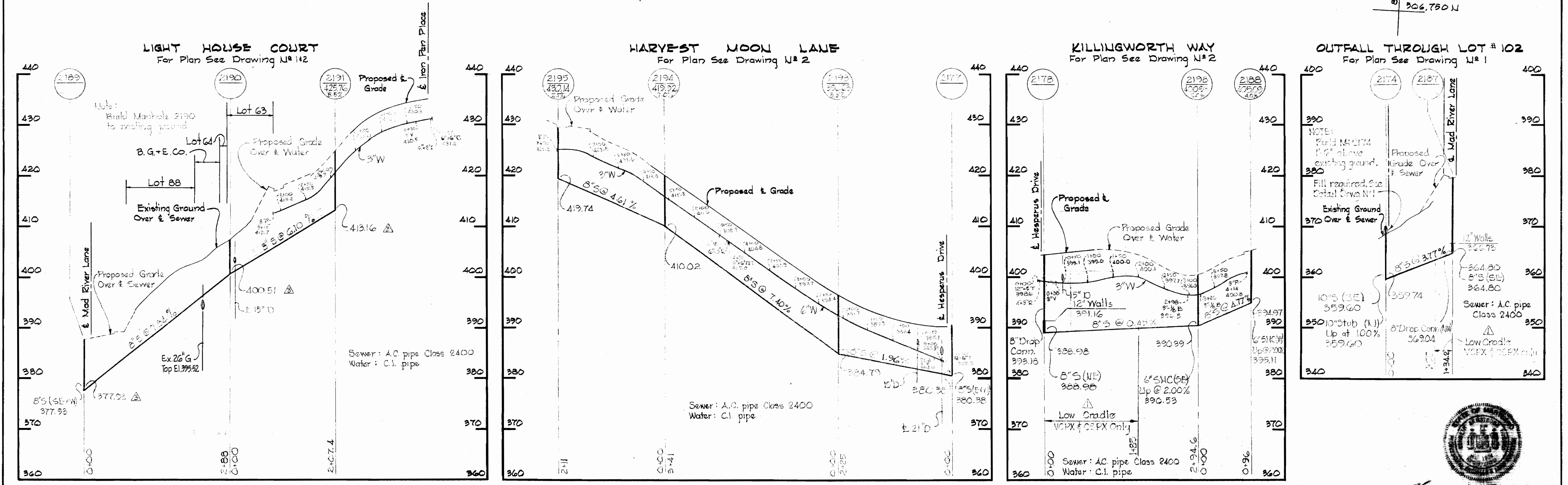
No.	Date	Revision
1	2-21-67	Added Low Cradle
2	10-23-67	Lots 2, 3, 4, M 2161 eliminated, M 2180 & fire hydrant moved.
3	10-2-67	Adjust inverts, M 2185 thru M 2191.



506,750 N
833,000 E

506,750 N
833,500 E

506,750 N
834,250 E



PROFILE
Scale: Horiz. 1"=100'
Vert. 1"=10'

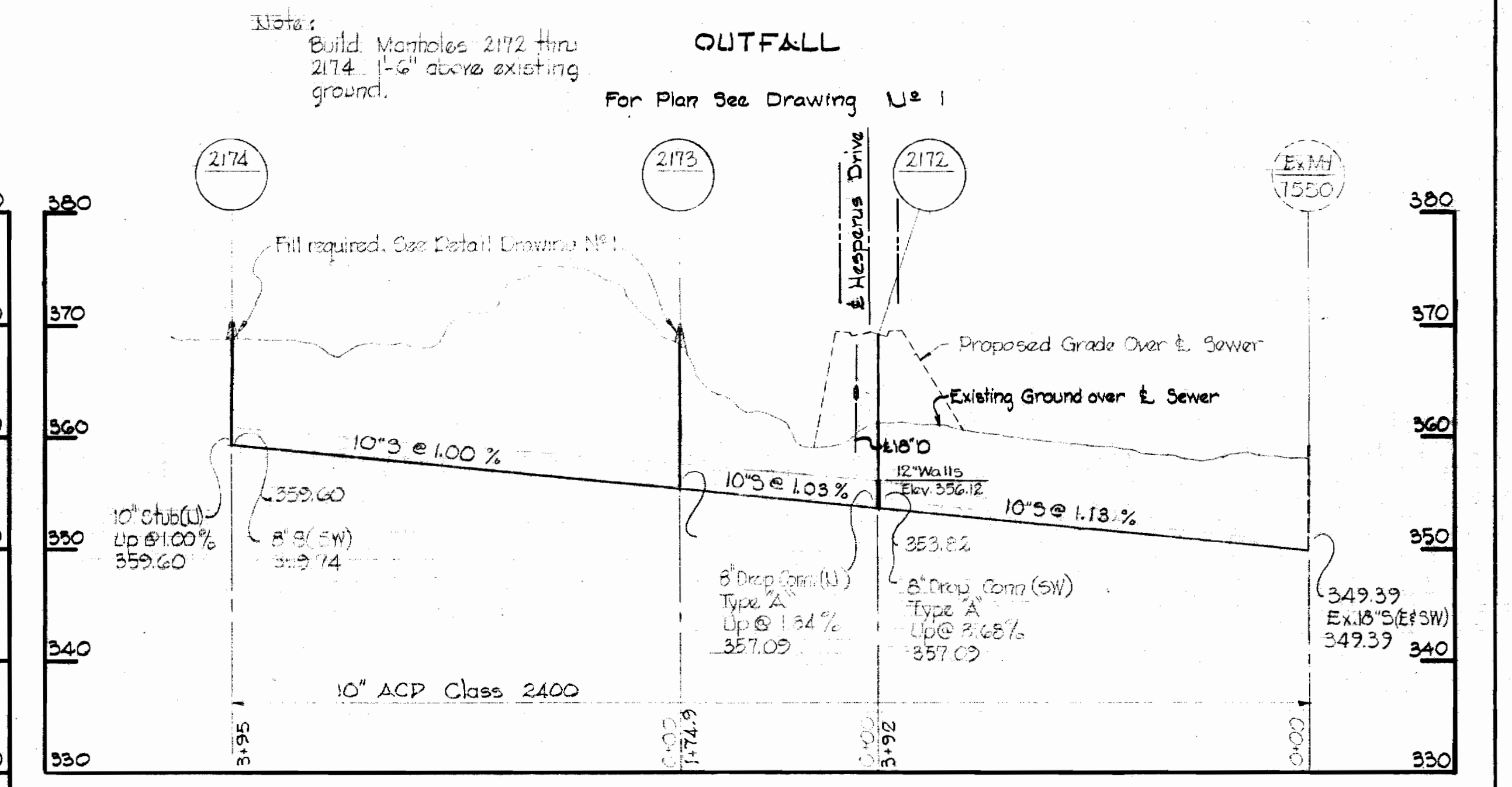
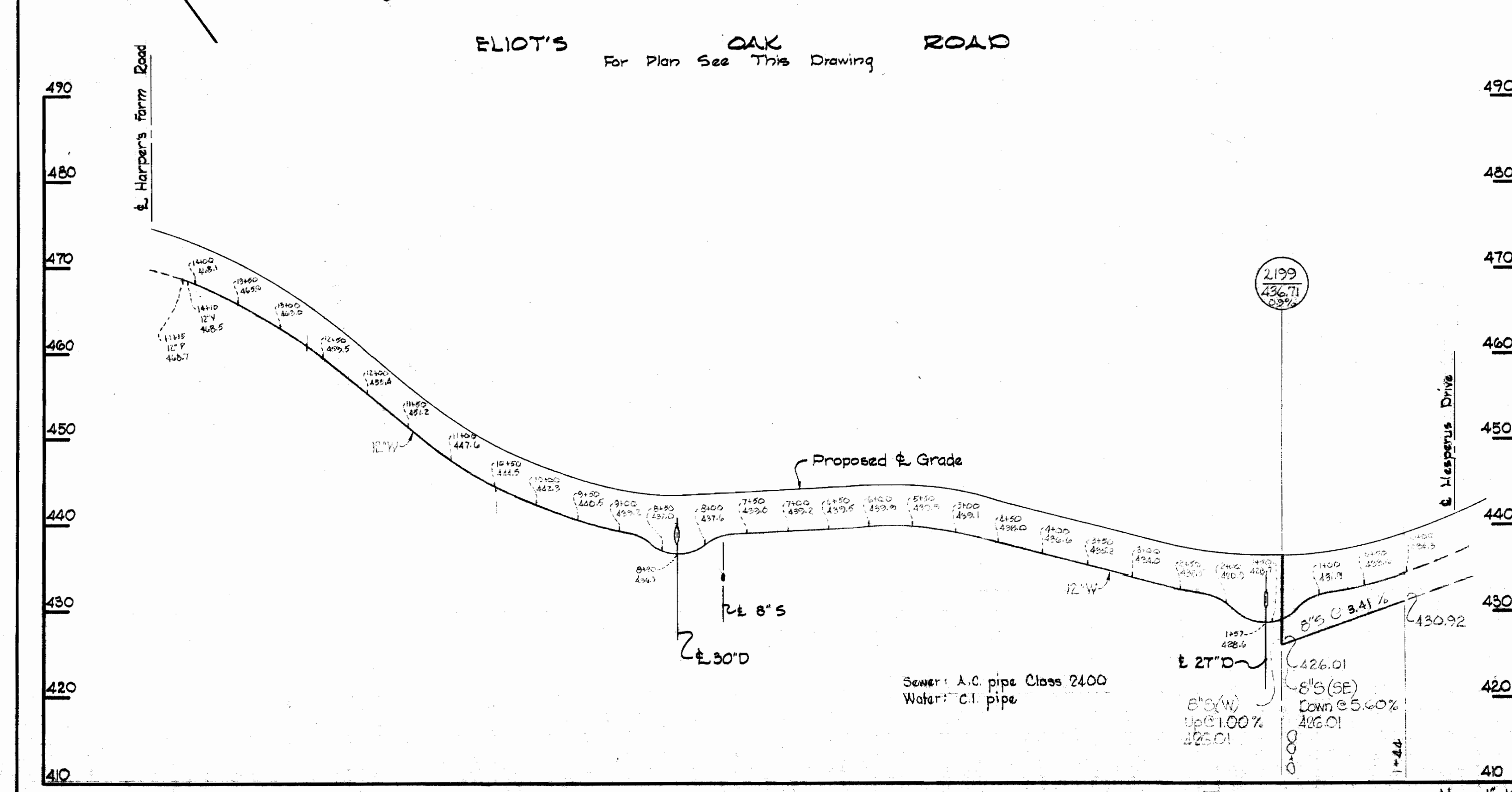
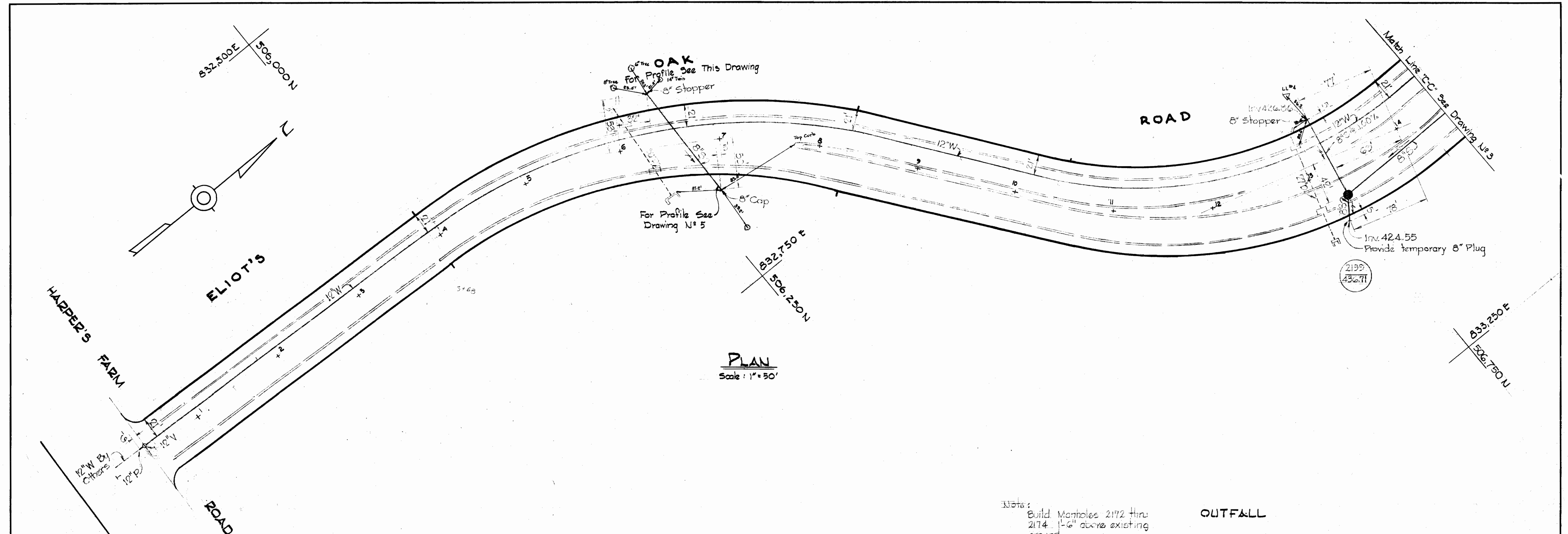


Kenneth A. Mahland
Longfellow Section N^o 2
Contract N^o 205 W & S

WHITMAN, REQUARDT & ASSOCIATES ENGINEERS 1304 ST. PAUL ST. BALTIMORE, MARYLAND	HOWARD COUNTY METROPOLITAN COMMISSION 9-15-67 <i>W J Gilbert</i> DATE CHIEF ENGINEER	CONTRACT NO. 205 W & S	PLAN & PROFILE OF WATER & SEWER MAINS	COLUMBIA VILLAGE OF HARPER'S CHOICE ELECTION DISTRICT-CLARKSVILLE No.5	DRAWING NO. 3 OF 5	SCALE AS SHOWN
					507-477 506-477	AS BUILT APRIL 22, 1968

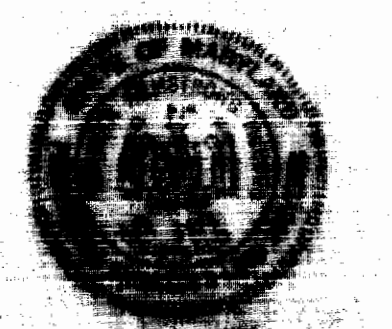
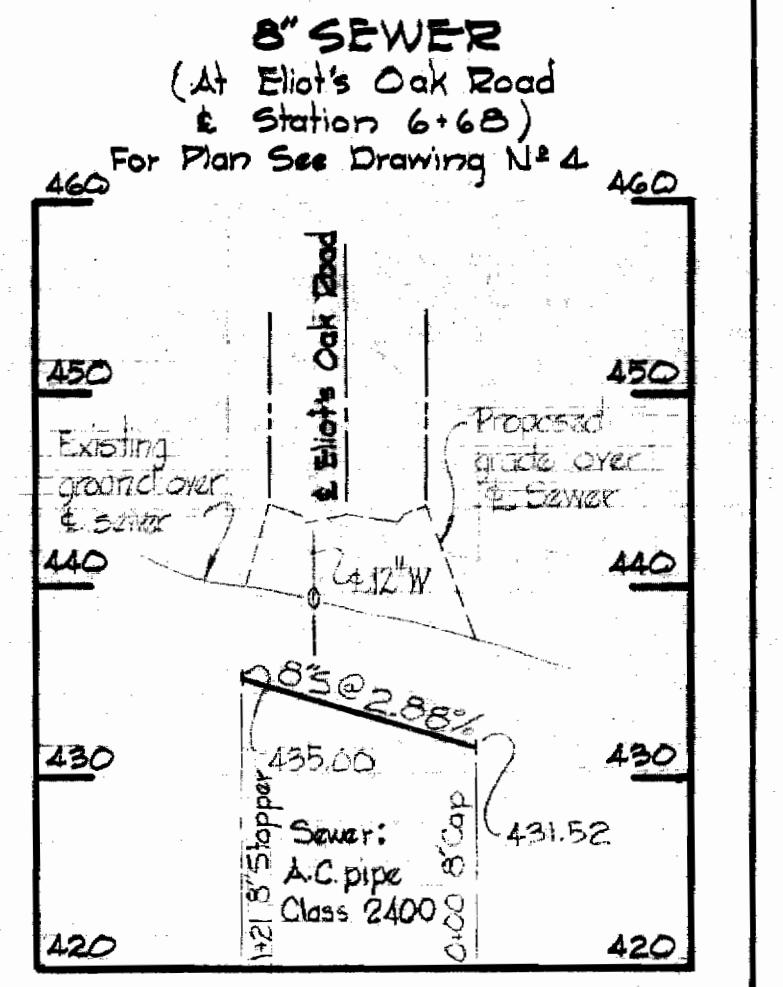
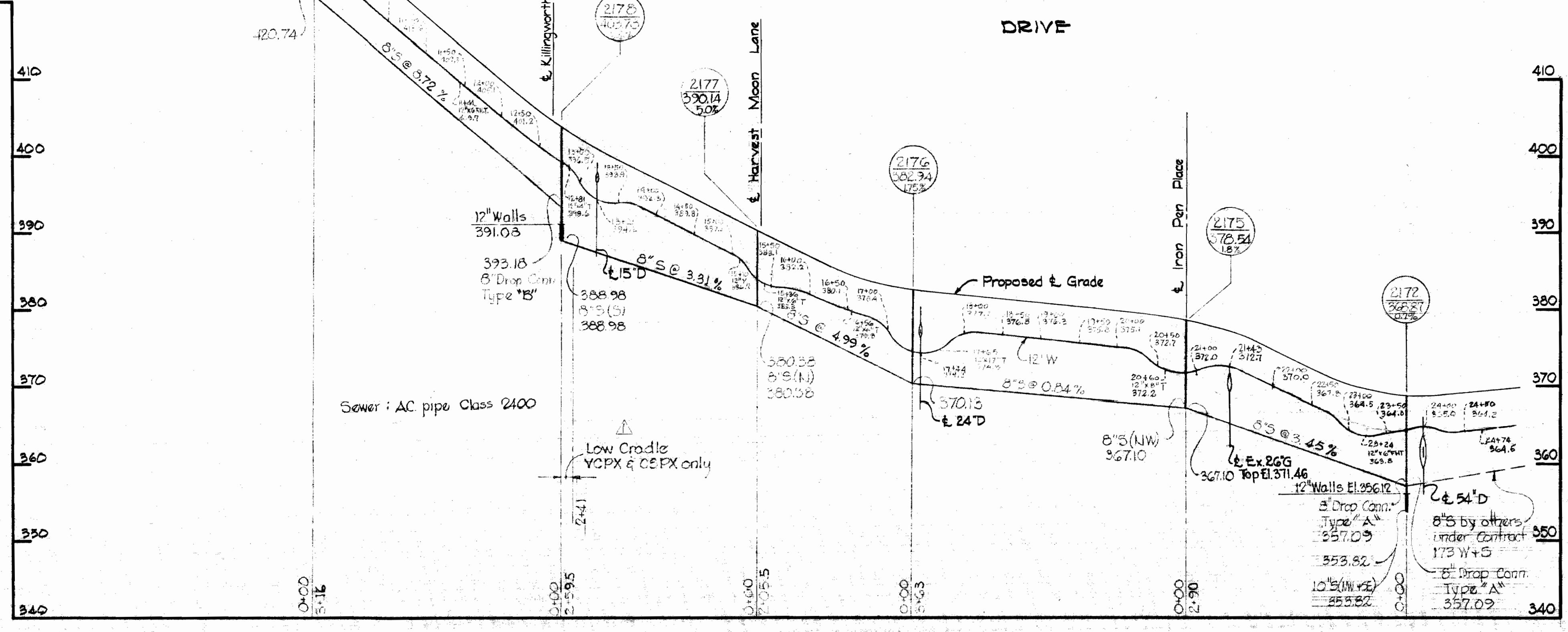
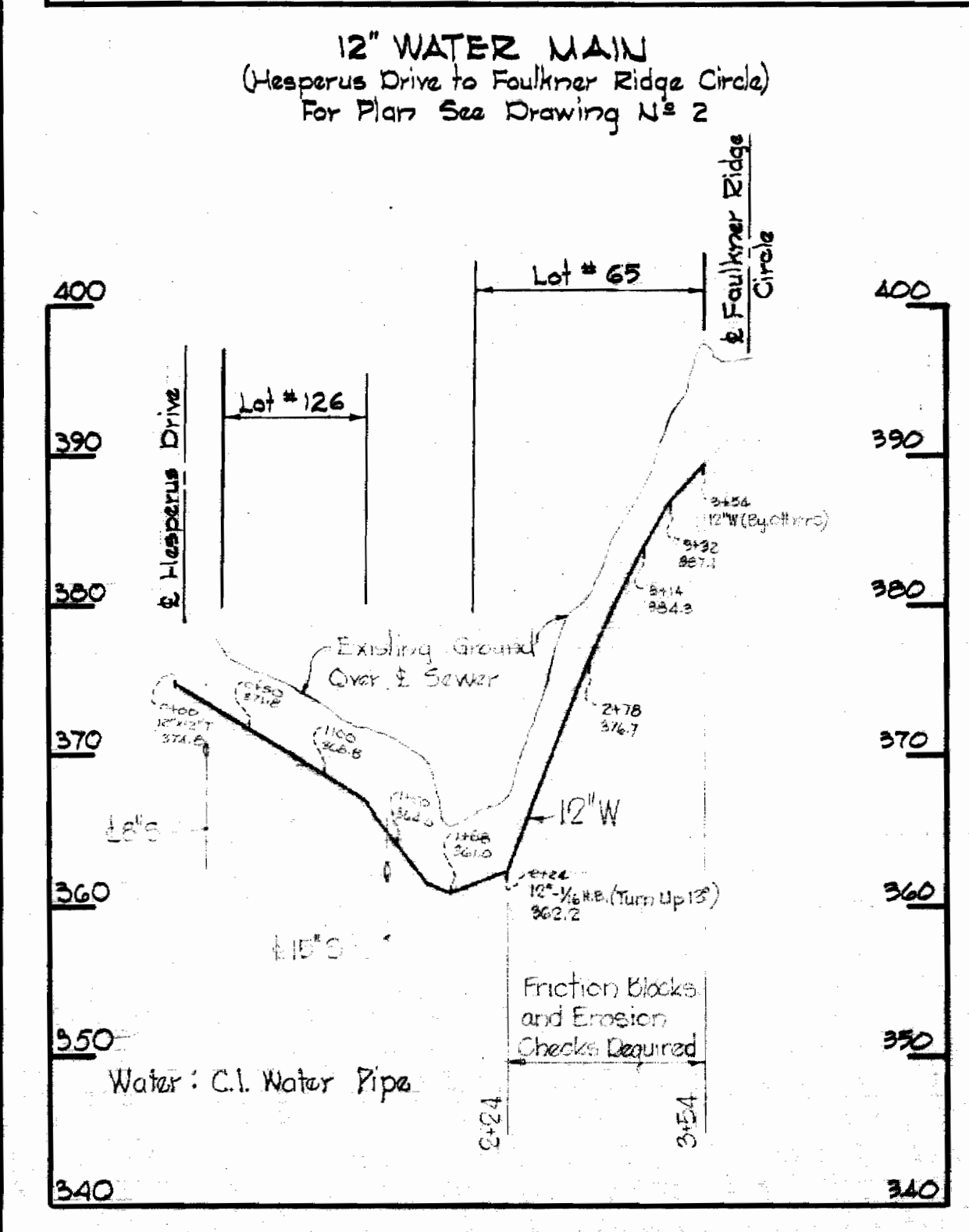
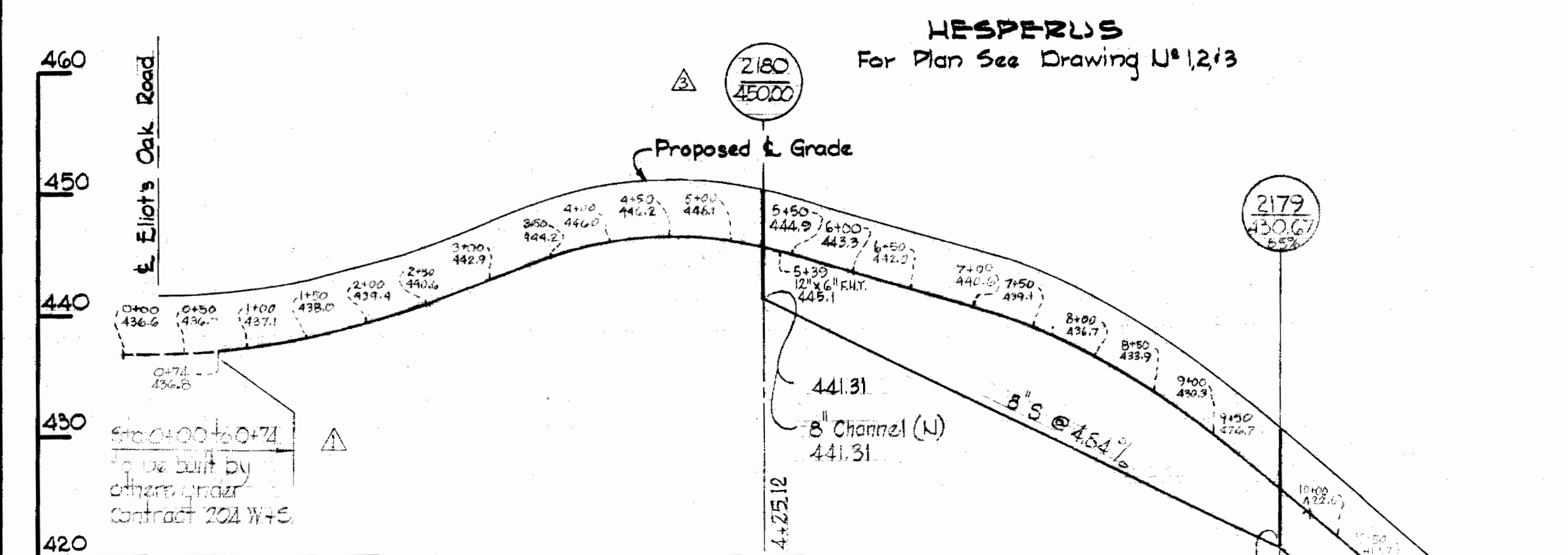
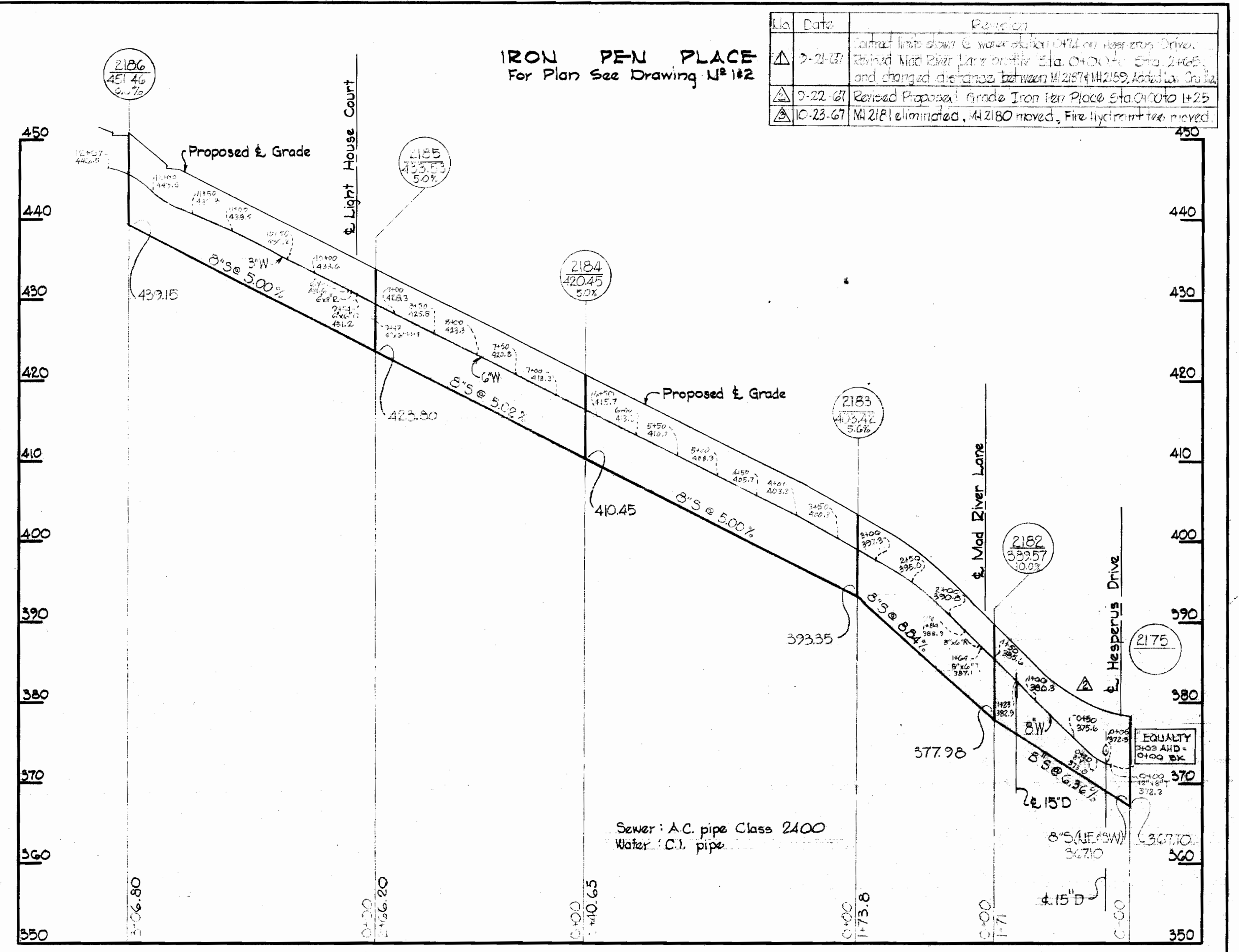
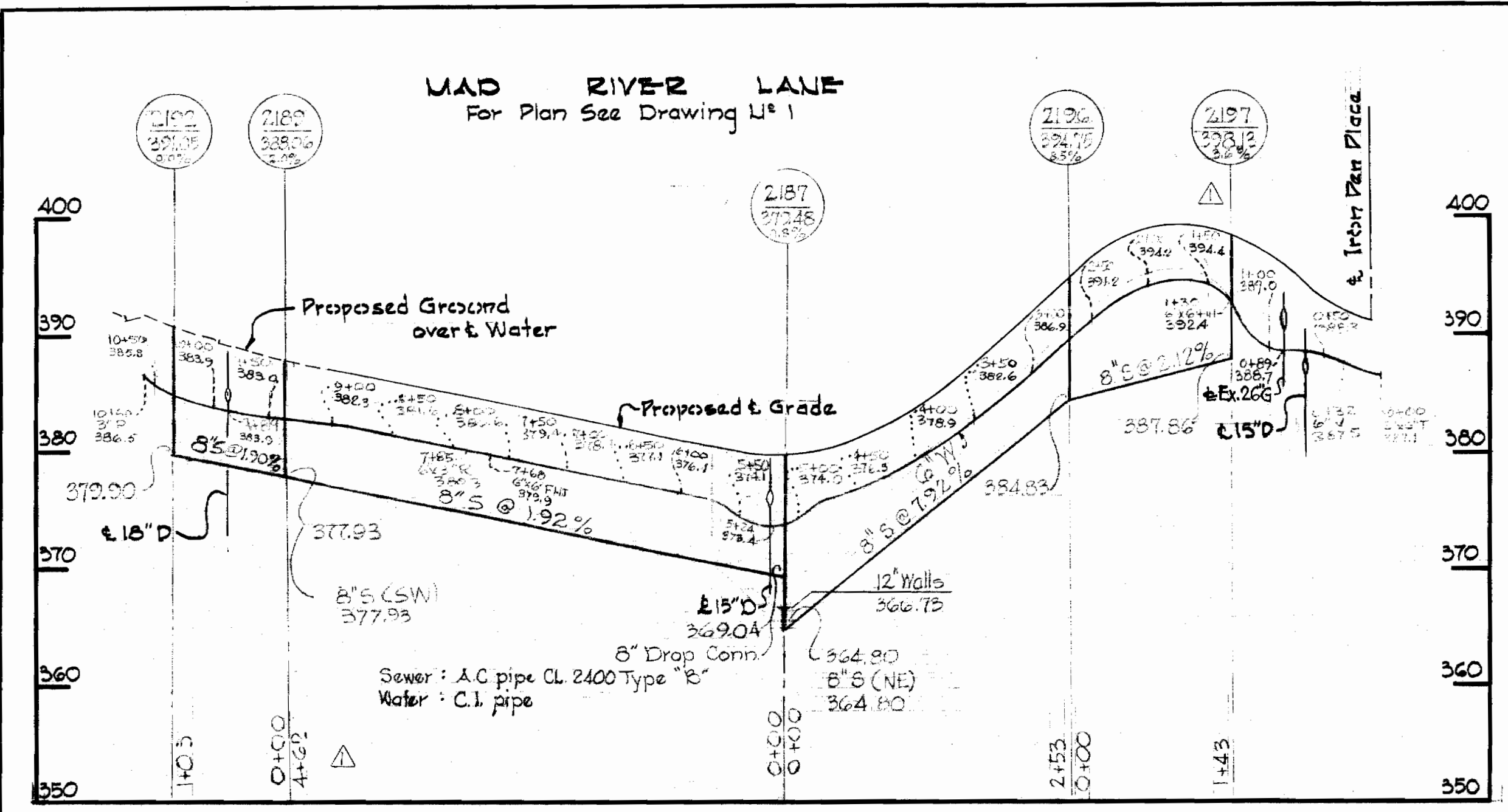
WS 205-WS/3

205-WS/4



<p>WHITMAN, REQUARDT & ASSOCIATES ENGINEERS 1304 ST. PAUL ST. BALTIMORE, MARYLAND</p>	<p>HOWARD COUNTY METROPOLITAN COMMISSION DATE: 2-15-67 W. O. Libbert CHIEF ENGINEER</p>	<p>CONTRACT NO. 205 W&S</p>	<p>PLAN & PROFILE OF WATER & SEWER MAINS</p>	<p>COLUMBIA VILLAGE OF HARPER'S CHOICE ELECTION DISTRICT-CLARKSVILLE No.5</p>	<p>DRAWING NO. 4 OF 5 SCALE AS SHOWN</p>
---	---	---------------------------------	--	---	--

No.	Date	Description
1	7-21-67	Contract limits shown & water station (W.S.) on Hesperus Drive. Revised Mad River Lane profile. Sta. 0+00 to Sta. 2+46.5, and changed alignment between M 2157 & M 2159. (See Drawing No. 1)
2	9-22-67	Revised Proposed Grade Iron Pen Place Sta. 0+00 to 1+29
3	10-23-67	M 2181 eliminated, M 2180 moved, Fire hydrant tree moved.



Longfellow Section N#2
Contract N# 205 W&S

WHITMAN, REQUARDT & ASSOCIATES ENGINEERS 1304 ST. PAUL ST. BALTIMORE, MARYLAND	HOWARD COUNTY METROPOLITAN COMMISSION DATE: 9-15-67 W. O. Paulsen CHIEF ENGINEER	CONTRACT NO. 205 W&S	PROFILES OF WATER & SEWER MAINS	COLUMBIA VILLAGE OF HARPERS CHOICE ELECTION DISTRICT-CLARKSVILLE No. 5	DRAWING NO. 5	SCALE H: 1"=100'
					OF 5	V: 1"=10'