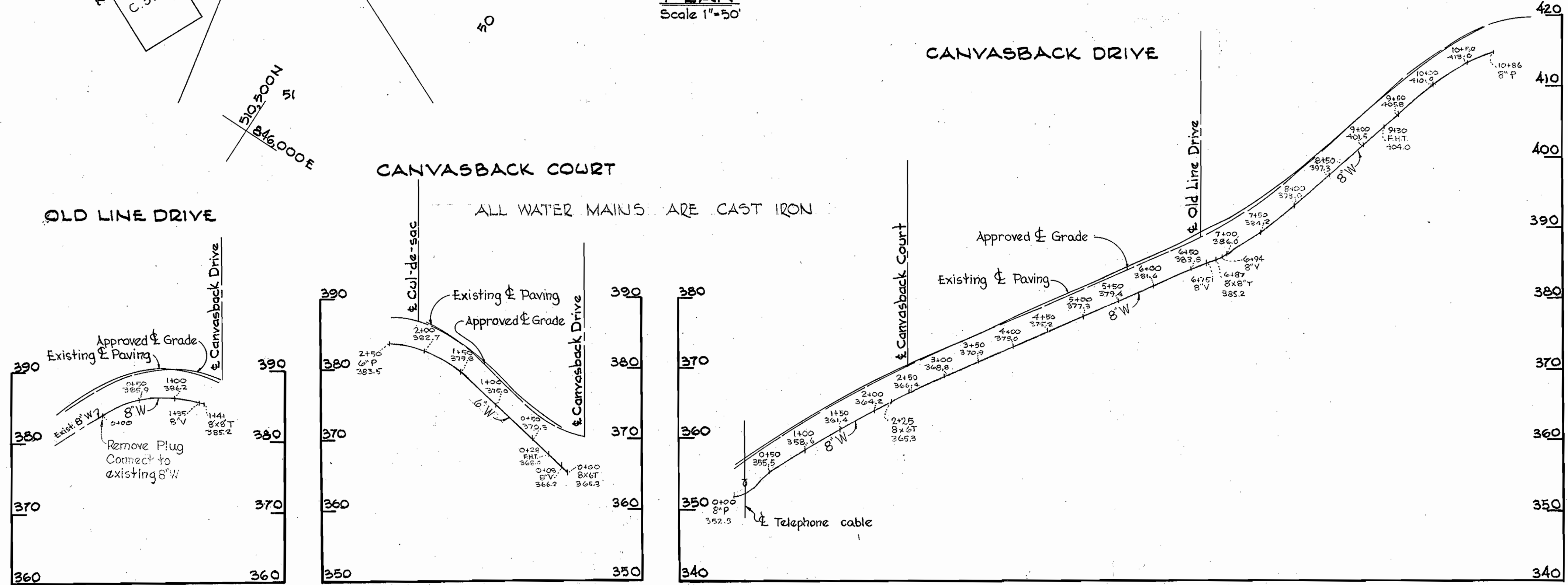


GENERAL NOTES

1. Approximate location of all existing mains are shown. The Contractor shall take all necessary precautions to protect existing mains and services and maintain uninterrupted supply. Any damage incurred shall be repaired immediately.
2. All pipe elevations are invert elevations.
3. The Contractor shall locate existing utilities a minimum of two weeks in advance of construction operations in vicinity of utilities.
4. For all standard details see standards bound in Specifications.
5. All water mains to be C.I.P or D.I.P and have a minimum of 3 1/2' cover.
6. Block all fittings with concrete, see standard details bound in Specifications.
7. Bury line elevations on fire hydrants shall be set the same as edge of paving, top of curb or as directed by the Engineer in the field.
8. All Fire Hydrants shall be buttressed with concrete in accordance with standard detail W-4.
9. Clear all utilities by a minimum of 6'; clear all poles by 2'-0" minimum or tunnel as required.
10. Cost of strapping Fire Hydrants and Valves to be included in the unit price bid for furnishing and laying water mains.

W.R.#A.B.M.*B Elev. 377.564
 R.K.#T.T. in top stone headwall
 2+75 Between P.I.A.B.13 & P.I.
 A.B.14 23' Lt. &

PLAN
 Scale 1"=50'



PROFILE
 Scale Hor. 1"=100'
 Vert. 1"=10'



Kenneth A. McLeod

WHITMAN, REQUARDT & ASSOCIATES ENGINEERS 1304 ST. PAUL ST. BALTIMORE, MARYLAND	HOWARD COUNTY METROPOLITAN COMMISSION DATE: 12/8/67 <i>W.O. Kelch</i> CHIEF ENGINEER	CONTRACT NO. 202W-A	PLAN & PROFILE OF WATER MAINS	ELECTION DISTRICT GUILFORD NO-6	DRAWING NO. 1 OF 1 SCALE AS SHOWN Dalton Contract No. 202W-A
---	---	---------------------	----------------------------------	------------------------------------	--

WS 202-WA/1